

What to do about Delco  
and the Computer Center?  
See page 4 editorial.

# DAILY NEXUS

Storke Tower is  
188 feet high.

VOL. 53—NO. 36

WEDNESDAY, NOVEMBER 1, 1972

UNIVERSITY OF CALIFORNIA, SANTA BARBARA

## Chavez speaks on Prop. 22 today behind UCen

By ANNE SUTHERLAND

Cesar Chavez, champion of farm workers' rights, is in Santa Barbara today. He will speak in the Free Speech area of the UCen lawn at noon, addressing such current social concerns as the lettuce boycott and the fight against Proposition 22.

Chavez began the farm workers' movement in the fall of 1965 with the organization of the National Farm Workers Association in Delano, California. Their first attempts to negotiate with grape growers for better wages and decent living conditions were flatly refused. Chavez was regarded as an upstart.

The "upstart" and the strike he organized proved effective—but only after a five year battle with the four million dollar agri-business of California. That five year battle centered on the strike

against growers of table grapes. The strike was successful because Chavez managed to involve public support in a secondary boycott of grapes at supermarkets, in addition to the picket line strike of the grape pickers themselves.

California and the entire nation still consume a large percentage of scab (non-union) lettuce. A lettuce boycott is in progress right now, in hopes of guaranteeing the rights of more than just a minority of lettuce workers.

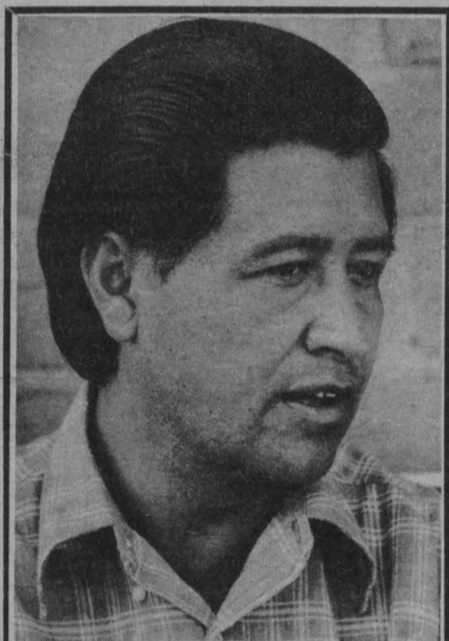
But the efforts of the farm workers are in danger of being quashed if Proposition 22 is passed. This proposition, backed by the California agri-business, is designed to limit the bargaining powers of the workers.

Backers of the proposition call it the "Farm Workers Initiative," and claim it will bring "order to the chaos" in California farm labor relations.

Opponents of the initiative say that the proposition would abolish the strike and boycott, would take from farm workers the right to vote in union representation and would prohibit farm workers from negotiation over such issues as health and safety.

The proposition has also been controversial because Secretary of State Edmund G. Brown, Jr. has filed suit to remove it from the ballot, calling it the "worst case of election fraud ever to be uncovered in California."

Chavez responded to this suit to remove Proposition 22 from the ballot by saying, "We are sickened and horrified that the slick public relations firm, Allan Blanchard and Associates, that masterminded this fraud on the people of California, defrauded the poor in the cities of our state to help put on the ballot a law designed to perpetuate poverty and powerlessness among the poorest of the poor in the fields of our (Continued on p. 12, col. 4)



Farmworkers' champion CESAR CHAVEZ

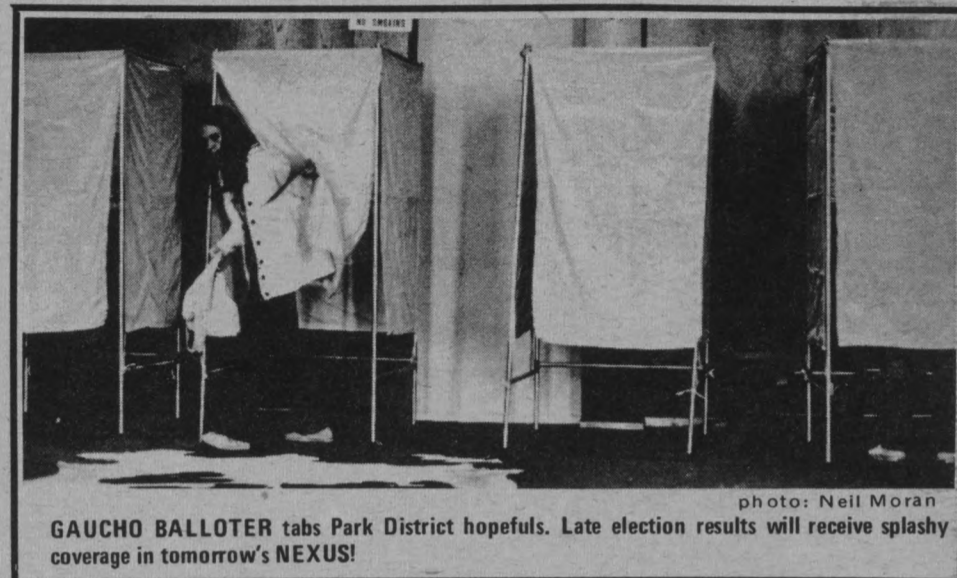


photo: Neil Moran

GAUCHO BALLOTER tabs Park District hopefuls. Late election results will receive splashy coverage in tomorrow's NEXUS!

## Leg council to tackle Delco, Comm Board, yearbook tonight

By KELLY MURPHY

The Delco-computer center controversy and Communications Board financing are among the subjects tentatively scheduled to come up at tonight's Leg Council meeting.

In an attempt to bring KCSB and the NEXUS under more direct control a proposal, backed by the United Students Coalition, has been introduced that would do away with their independent inter-departmental budgetary transfers. Coalition member Mike Houlemard, when asked how he thought the voting would go, bluntly stated, "15-0." Other sources flatly predict the defeat of the proposal.

More facts are expected to surface at the meeting about Delco's involvement with the Computer Center. It is predicted that the bulk of the meeting will be taken up by testimonies from those involved. Among those summoned to speak are Vice-Chancellor Dale Tomlinson, Computer Center director Chuck Loepkey, polis lab director Robert Noel and Electrical Engineering Dept. chairman Roger Wood.

In a last ditch effort to save La Cumbre, a yearbook spokesman said that they will present their figures and plead

their case before Council members. Although hundreds of yearbooks have been sold in the past few days, their goal of 2,000 couldn't be met.

## Election notices!

Terry McGovern, daughter of the Democratic Presidential nominee, will speak today at 3:00 at the UCen free speech area. The younger McGovern will be accompanied by Assemblyman John Burton, co-chairman of California's McGovern campaign and actress Candice Bergen.

Burton, chairman of the Assembly Rules Committee, is considered to be one of the most "radical" members of the Legislature. Among his proposed bills include a socialized medicine measure and a bill to limit inheritances to \$2,000,000. Confused about who to vote for in next Tuesday's IVCC election?

A forum for all the IVCC candidates will be held tonight at 8 in the I.V. Planning office, 966 Embarcadero del Mar. Each candidate will make a presentation and will answer questions. Everyone is encouraged to attend.

## Probe accuses Bliss of conflicts of interest

By MIKE GOLD

George Bliss, candidate for First District Supervisor, was the subject of an extensive survey by the most recent issue of Probe, Isla Vista's heralded investigative newspaper.

Probe, issued irregularly and 'only when the need arises,' came off the presses Friday. It was heavily distributed throughout the First District with a special emphasis on Carpinteria, better known as "Bliss county."

This latest edition portrayed Bliss as a man of many faces: expedient and shrewd (qualifications which mark many a successful politician these days).

The heading of the major article was "\$um of the Things You Always Wanted to Know About Bliss..." Its main focus was to allege that George Bliss, as a candidate for supervisor, "has many potential conflicts of interest to offer the voters."

Beyond this, Probe recounts some allegedly shady dealings which lurk in the background of George Bliss.

### BANK ROLE

The case of Bliss and a corporation calling itself Carpinteria Downtown Parking, Inc. goes back to the early sixties. Probe alleges that County Bank, of which Bliss is Chairman of the Board, loaned money to this

corporation to buy property in which Bliss had a stake.

A second contradiction may involve Bliss and Skor Mor, a new factory on the coastal outskirts of Carpinteria which manufactures adult games.

The plant, built by a limited partnership called DNB, is located just north of the freeway and was built between March and July of this year. Probe alleges that Bliss is a limited partner in this firm.

It is odd, explains Probe, that "in May, Bliss told the News & Review: "Probably the most important decision that I have made on the Planning Commission... was that there should be no multiple or commercial or industrial use on the north side of the freeway."

George Bliss, in an interview with the NEXUS, confirmed that he was a limited partner in DNB, but that his May statement still holds.

### REAL ESTATE

Probably the most significant alleged conflict of interest is between Bliss and real estate.

"Over the years," Probe says "County Bank has made real estate loans of \$202,000." And, "real estate is the subject of most of the business that comes before the Board of Supervisors."

Bliss claims to be for "limited" growth. But, continues Probe, "as chairman of the County Bank, Bliss

not only has a personal interest in growth, but he also has a corporate duty to protect and advance the interests of the bank."

Bliss, in answering this charge, claims "as bank chairman I have no say in bank loans, but only make policy decisions."

Probe reveals, however, that Bliss has been involved with more than just this one decision regarding land use north of the freeway.

The record, Probe alleges, shows that between the years of 1961-63, Planning Commissioner Bliss not only approved requests for commercial and shopping center zoning on land north of the freeway owned by the Bailards, a large Carpinteria land-holding family, but bought a strip of land for \$260,000 from the same Bailard family.

Speaking again to the NEXUS, Bliss admitted purchase of the property but was unsure of the zoning decisions mentioned.

Also in this rezoned district is Casitas Village, an "unattractive own-your-own apartment complex," says Probe.

Bliss sold the land he bought from the Bailard family two years after purchase. "He sold it for \$324,000, or \$64,000 more than purchase price," claims Probe. The

(Continued on p. 12, col. 1)

**25¢ a BEER** IMPORTED  
 EVERY WEDNESDAY FOR LADIES ONLY  
 9 p.m. to CLOSING  
**ENTERTAINMENT BY OVEREASY**



**Black Horse Inn**  
 298 Pine, Goleta  
 967-8611

**ROBERT LOPEZ FOR MARSHAL**



**A 14 YEAR RECORD OF  
 CIVIL LAW TRAINING  
 AND NOT A 26 YEAR  
 RECORD OF CRIMINAL  
 LAW ENFORCEMENT**

Ygnacio Ramirez - James A. Wedmore - John "Dore" Sanchez

PAID POLITICAL ADVERTISEMENT

**Beach access restricted  
 by park fee, says driver**

By **ABBY HAIGHT**  
 "Although the beaches belong to the people up to the mean high tide level, you can't get to your beach any more," charged Juan Chicoy, a Santa Barbara resident who is in the process of filing a suit against the State of California.

Chicoy parked his car at Refugio State Beach recently

without paying the \$1 fee, and returned to find himself cited for being in a closed state park.

"There is no other way to get to the beaches north of Santa Barbara because all the access has been fenced off by the owners of the property," Chicoy pointed out. He feels that the state is discriminating against citizens by charging them \$1 to use the only

public means of entry to beaches in the Refugio area. "What about the people who can't afford to pay the dollar?" asked Chicoy. "Are they to be denied the use of their beach?"

Chicoy says that the fee has only been in effect for the past few years, and is looking for people who have used the Refugio access for five years or more to testify for his suit. "I've used the beach for 37 years, and there are others who have too," he said. Anyone who could help his case is urged to call 964-2187.

**Health board meets**

Students with complaints or comments concerning the Student Health Center are invited to air their gripes before the A.S. Student Health

Advisory Committee.

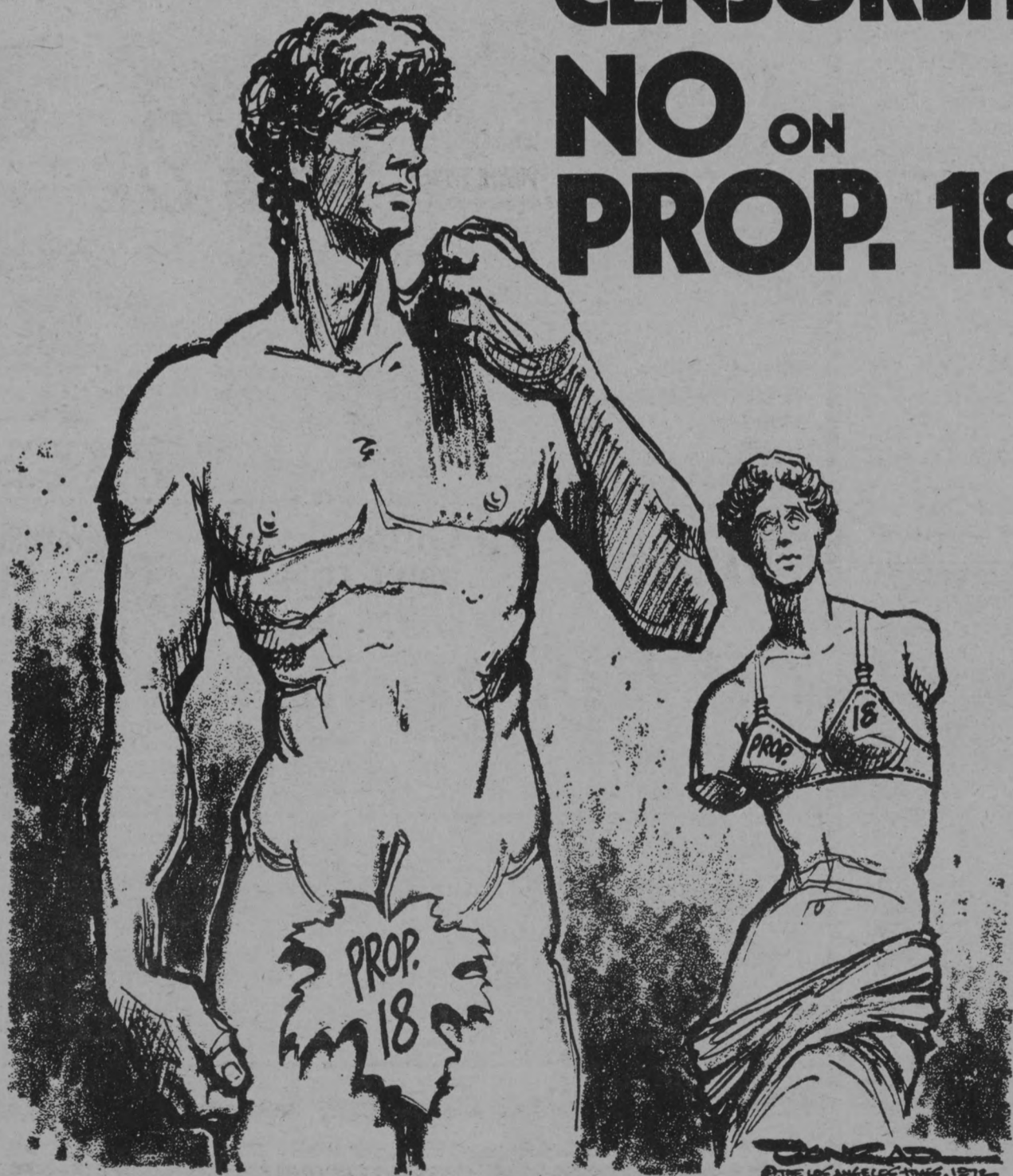
The committee will be meeting tomorrow at 8 a.m. in the conference room of the Student Health Center. Those with any questions can contact Jim Gazdecki at the A.S. Office.

**Theater meets**

The Isla Vista Community Theater will have its second meeting this Wednesday night, November 1, at 7:30 p.m. at Das Institut, 795 Embarcadero del Norte. Thirty persons attended last week's discussion session.

Tonight persons are asked to bring scripts for plays which they would like to see produced. Since tentative plans have been made for performances of short plays before Christmas vacation, it is imperative that decisions be made soon. If you are interested in theater in Isla Vista, please attend this meeting tonight at Das Institut.

**NO ON  
 CENSORSHIP  
 NO ON  
 PROP. 18**



SPONSORED BY CALIFORNIA STUDENTS AGAINST PROPOSITION 18,  
 8230 BEVERLY BLVD., LOS ANGELES, CA 90048, (213) 653-0345,  
 DAVID BRAMSON, CHAIRMAN.

Paid Political Advertisement

**Music lost**

A university center folder containing University Singers music and an ancient music score has been lost.

The folder was last seen in the UCen patio area and the founder is urged to return it forthwith to the Music Office or contact Mary Hamilton at 685-1712.

Volunteers are being sought to help pass petitions on both the I.V. Justice Court and the Goleta Water Initiative. A big drive on election day, say organizers, will net large numbers of signatures if people man the polls with petitions. Interested parties should sign up at Suite H of the I.V. Service Center.

**A.S. TRAVEL SERVICE**  
 3rd floor, UCen  
 Mon-Fri 11-2  
 "Fast 'n friendly"

**KINKO'S**  
**COLOR PRINTS**  
 15¢  
**1 DAY SERVICE**

**ATTENTION  
 BLACK PRE-LAW  
 STUDENTS**

UC Davis Law School recruiters will be at the BSU Office on Thursday, Nov. 2 from 3 to 5 and Friday, Nov. 3 from 8 to 5 to answer all questions concerning admission to Davis Law School. Applications will be available.

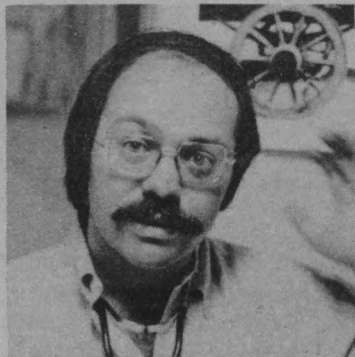
# Marijuana-heroin myths dispelled

By DAVE BEARMAN, M.D.

One of the points that people who oppose changing the marijuana laws is that it leads to the use of harder drugs. What is the medical evidence for this?

NONE. Pharmacologically marijuana and heroin are not in the same category of drug. Heroin is an opiate. There is an argument among pharmacologists as to where cannabis belongs, but most include it with the sedative hypnotics (alcohol, barbituates).

The effect on the central nervous system (mind, altering



DR. DAVE BEARMAN

properties) are almost opposite. Heroin is a narcotic — it tends to make people sleepy, introspective, isolated. Cannabis acts like alcohol as a releaser of inhibitions, the person becomes gregarious, outgoing, may laugh excessively.

The chemical formulae of the opiates and the cannabis are in no ways similar on gross inspection and have not been shown to be similar by any experimentation yet done.

Therapeutically heroin is used as a major pain killer. Other opiates may be effective antidiarrheal agents.

Cannabis was used therapeutically mainly as a sedative and muscle relaxant until it was removed from the U.S. Pharmacopia in 1941.

The idea of one drug "leading to" the use of another does not make much pharmacological sense. Drugs do not have personalities but pharmacological

properties. A person may use a higher dose of the same substance (ie. beer to alcohol) or they may change to a substance within the same category which has more potency a given dose (i.e. codeine to morphine). Moving from one pharmacological category to another cannot be explained with our present pharmacological knowledge; those who hold such theories must rely on other information.

Numerous prestigious Presidential Commissions have stated flatly that marijuana does not lead to the use of other drugs. The Johnson Crime Commission Report of 1967, composed primarily of attorneys, judges and police officials felt it did not lead to the use of any other drug and also cited the prestigious Pharmacological Basis of Therapeutics by Goodman and Gilman which concurred.

The "evidence" which is usually raised to indict marijuana is that many people who use opiates have also used cannabis. What they overlook is that they have also used numerous other substances — tea, milk. A recent British survey found that the most likely drug that a habitual heroin user may have had contact with prior to the use of heroin is alcohol.

Finally at the 1937 Federal Hearings, which established the foundation for our current legislative stand on cannabis, Harry Anslinger, longtime foe of cannabis and former head of the Federal Bureau of Narcotics (now the Bureau of Narcotics and Dangerous Drugs), stated that the so-called stepping stone theory was unsound.

A RECENT ARTICLE IN THE NEXUS GAVE THE IMPRESSION THAT THE USE OF HEROIN IN ISLA VISTA WAS ON THE RISE. IS THIS TRUE?

All available indications are that the habitual use of opiate

drugs has had a dramatic drop in Isla Vista. In early 1970 the Grand Jury estimated that there were 200 "addicts" in Isla Vista. Others felt that this figure was unrealistically high. Switchboard and others close to the scene estimated the number at 30 - 100

at that time, with it more likely that the true number was closer to the lower side of the estimate.

At the present time, reliable sources such as the Foot Patrol and Isla Vista Open Door Medical Clinic have estimated that it is unlikely that there are more than 10 habitual users of heroin in Isla Vista. Further support of this idea: few seek admission to the methadone maintenance program; however

there does appear to be about 250-300 people who have at one time used heroin once or chipped (use opiates irregularly monthly, biweekly). It should be emphasized that this group is also probably less active than in times past.

**Mike cares about honest and humane Law Enforcement**

**MICHAEL DEVANEY**

Vote **Marshal**

Paid Political Advertisement

**AIR FORCE OFFICER TRAINING INTERVIEWS**

Senior Men and Women —any major—

**UCSB PLACEMENT CENTER**

November 16 and 17

see Sgts. Fusco or Young

**Westen's CAMERA STORES**

TAPE RECORDERS • STEREO HI-FI • RADIOS • TV

PRICES GOOD THRU NOVEMBER 6, 1972

**PARTY BUY YOUR GAF MOVIE CAMERA NOW... FOR THE UPCOMING HOLIDAY SEASONS FAVORITES**

**GAF ST/1000 SUPER 8 MOVIE CAMERA WITH 10-TO-1 POWER ZOOM**

**SAVE \$150 NOW ONLY 199<sup>50</sup>**

LIST PRICE 349<sup>50</sup>

**GAF MAKES PICTURES "PERFECTLY CLEAR"**

**DON'T MISS THE SPECIAL DEMONSTRATION BY GAF REPRESENTATIVES SATURDAY, NOVEMBER 4th, AT WESTENS**

**USE OUR LAY A WAY NOW FOR CHRISTMAS**



THE FAME of Humphrey Bogart is legendary. For a brief period in 1936, however, he was able to elude the ever-dogging reporters long enough to star in "The Petrified Forest," directed by Archie L. Mayo and featuring Leslie Howard and Bette Davis. "The Petrified Forest" will be shown tonight in Campbell Hall at 7 and 8, for the price of \$1 at the door.

<p><b>NORELCO FLASHCUBES</b></p> <p>ctn. of 3.....</p> <p><b>69¢</b></p> <p><small>REG PRICE .99</small></p>	<p><b>gaf COLOR PRINT FILM</b></p> <p>126-12 EXP</p> <p><b>79¢</b></p> <p><small>REG PRICE .97</small></p>	<p><b>AGFACHROME FILM</b></p> <p>35mm 20 EXPOSURE WITH PROCESSING</p> <p><b>2<sup>56</sup></b></p> <p><small>REG PRICE 3.09</small></p>
<p><b>C-60 CASSETTE RECORDING TAPE</b></p> <p><b>3/99</b></p> <p><small>REG PRICE 3/1.79</small></p>	<p><b>20% OFF ON ALL AGFA ENLARGING PAPER</b></p>	

**Goleta Store Open For Your Shopping Convenience**

Mon.-Fri. 9:30 A.M. to 9:00 P.M., Sat. 9:30 A.M. to 5:30 P.M., Sun. 1-5

★ CONVERSE ★

**TENNIS SHOES**

TOM'S SANDAL SHOP

6560 Pardall

**HILLEL GENERAL MEETING 8 PM TONIGHT**

**URC LOUNGE**

The Revitalized Jewish Students' Union, 777 Camino Pescadero

editorial

# On Delco: money vs. morals

Resources of the University should not be used to promote war-related research. UCSB's Computer Center should not receive money from GM's Delco Electronics.

Two crashingly unobjectionable statements, if you oppose civilian complicity in American warmongering. The NEXUS does. But as the "independent observer", we feel there are sides of the Computer Center-Delco controversy which go deeper than simple Stop-The-War-Machine emotion.

The Computer Center at UCSB is one of our campus' few prestige points left. It is a very advanced center for any college campus.

But state sources refuse to supply more than 20% of our computers' funding. What is the Computer Center to do? It must contract for outside jobs to keep financially afloat. It's in no position to be picky about who adds to the till, war research or no war research. If the Computer Center drops the Delco account, the Center will face a drastic cutback.

Naturally, the Center claims this

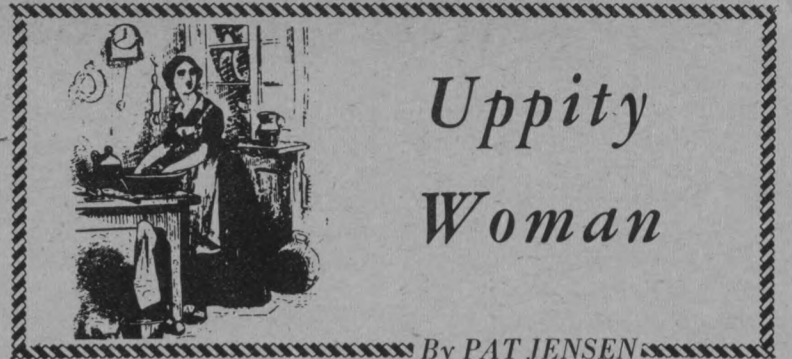
will severely degrade computer services for students. Maybe so, but we remain unconvinced.

A majority of the members of the Chancellor's Computer Advisory Committee have consistently neglected the issue of University facilities being connected with defense contractors.

Because of that fact, UCSB students will have to decide for themselves whether Computer Center services warrant the odor of defense dollars. Once they do, they should hold the key to any decision on the fate of the Center.

Tonight, Leg Council plans to hold a fact-finding forum with representatives of the Computer Center. This is a crucial step for Council to take. Serving as representatives of the students, it is up to the members of Leg Council to investigate the extent to which the present Computer Center facilities serve the student body—and whether the benefits outweigh such an unsavory relationship.

We don't think they do.



## Uppity Woman

By PAT JENSEN

The UCSB Committee on Women in the Library has found clearcut sexual discrimination in hiring and promotion practices in this traditional "feminine" field.

The committee has formulated several general and specific recommendations which, if adopted, would correct some of the problems women face. Perhaps the boldest recommendation is the one that all women librarians receive, this fiscal year, a lump sum payment of \$1,300. This is the mean annual sum by which our women librarians are presently underpaid in comparison to men with comparable experience. How the University would find the money, only God in her wisdom knows. Perhaps the boys with the erector sets could give up a building?

Another proposal would let men use some of their sick leave time as maternity leave, a very nice idea, and one which recognizes that fathers do (or anyway could) play a role in parenthood.

### PERSONAL LEAVE

Since UC grants men a special three week leave with pay for military service, the committee proposes that a special non-structured personal leave of six days a year be granted all employees. Nice idea, but why not ask for three weeks?

My favorite recommendation is the one about child care. The committee report points out that in the U.S. half the mothers of children under 14 are working, and that one-third of the women with children under six work. Child care centers (all types, public, private, expensive, tax-supported, everything) have spaces for less than one-sixth of the pre-school children whose mothers work.

### ATTENTION

The committee suggests that the University pay careful attention to the committee currently investigating the University Community Child Care Center, and plan to provide an excellent center for child care at reasonable cost. Beautiful. And while you're at it, University, why don't you take a close look at all day care?

Parents with school-age children seldom quit work at the time the kids get home from school. It doesn't seem totally impractical to suggest that an after-school care and recreation center could be set up on the West Campus for the children of various University employees. True, a bus service of some sort would be needed, but I have a feeling that numerous librarians, secretaries, clerks and other staff members would be delighted to pay for such a service.

### PART-TIME

The other nifty suggestion has to do with part-time work. The library reference department has paired part-timers to fill full-time positions, and it seems to have worked well. This is a plan which should be extended, not just in the library, but throughout the system and it shouldn't be limited to women. Some Swedish firms have experimented with pairing husbands and wives for the same job, which gives the family both a full-time income and full-time parenting.

Is there any reason it wouldn't work for the many academic couples who teach in the same field? Or for the many student couples who need both time and money? (Somewhere I've picked up the notion that the University can be a center for experiment in thought and action.)

### UPGRADE

I don't know about this committee's recommendations on salary. The committee finds that the UC system needs to upgrade its librarians' salary scales by a third in order to compete for and hire "the best professionals available in the field." I'm not at all certain that the University really wants the best people available. I have an uncomfortable feeling that what it wants in most areas is quiet people.

Gives one rather an odd feeling to see that state and community colleges and the federal government pay their librarians more than UC.

It's a super report. I hope the other campuses follow suit, and that other University departments will initiate their own studies.

## Letters:

# Touring group arrives Friday

To the Editor:

True or False...

1. The U.S. is bombing the Indochinese people to make the world safe for democracy, rather than for Standard Oil.

2. Current peace rumors are evidence of Nixon's integrity and warrant his re-election.

3. ITT's economic prosperity is derived primarily from its ownership of Hostess Twinkies.

4. "FTA" really means "Free" the Army.

5. The anti-war movement in the U.S. is dead.

If you answered "true" to any of the statements, you, like millions of other Americans, have been misinformed by the government and by the media. The Indochina Peace Campaign (IPC) was initiated for you. It is a nationwide emergency effort to

inform the American public before the November elections about the lies of the Nixon Administration. Friday, Nov. 3 at 11:30 a.m., an IPC touring group of Tom Hayden, Jane Fonda, Holly Near and George Smith will speak at the UCSB Campus Stadium. Hear what they have to say; and then, on Nov. 7, wisely cast your vote.

For the majority (I hope) of you who believed the above quiz to be obviously simple, don't feel too smug. Perhaps you have some doubts about statement 5, or maybe you don't understand all the implications of statement 3. In any case, remember that Nixon's best weapon is your apathy. You, as well, should attend the IPC show on Nov. 3, to show your support for this national anti-war effort. Better yet, buy a second ticket (they're only 50c in front of the UCen) for some poor misinformed soul, and accompany him or her to the show on Friday. If each of you can make just one other person think a little deeper about these issues, it will all be worthwhile.

BETTY SEIDEL

If you read anything on these pages that you disagree with, or agree with, or don't understand, write us a Letter to the Editor. There are some simple rules to the game which will make our lives much easier. Type on a 60-space line, please, and triple space. No erasable paper, please! It smudges. We will not print letters without signatures; we can withhold your name if need be, but no anonymous letters. We will not print letters under fake names if we find out about them. We will not print letters signed only by an organization; there have to be some names attached to it. Bring your letters to the NEXUS office under Storke Tower, please, or mail them to the NEXUS. Please be legible!

# DAILY NEXUS

## Opinion

MIKE GORDON  
Editor-in-Chief

DAVID HANDLER  
Editorial Page

DAVE CARLSON  
News Editor

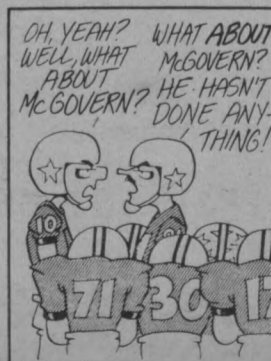
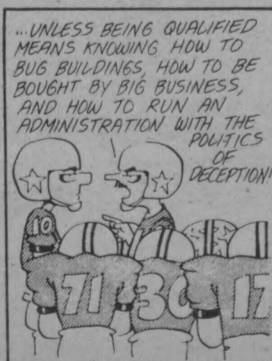
HENRY SILVERMAN  
Managing Editor

Opinions expressed are those of the individual writer and do not necessarily represent those of the UCSB DAILY NEXUS, Associated Students of UCSB or the University of California Regents. Editorials represent a consensus viewpoint of the NEXUS Editorial Board unless signed by an individual writer. We welcome letters and columns from opposing viewpoints.

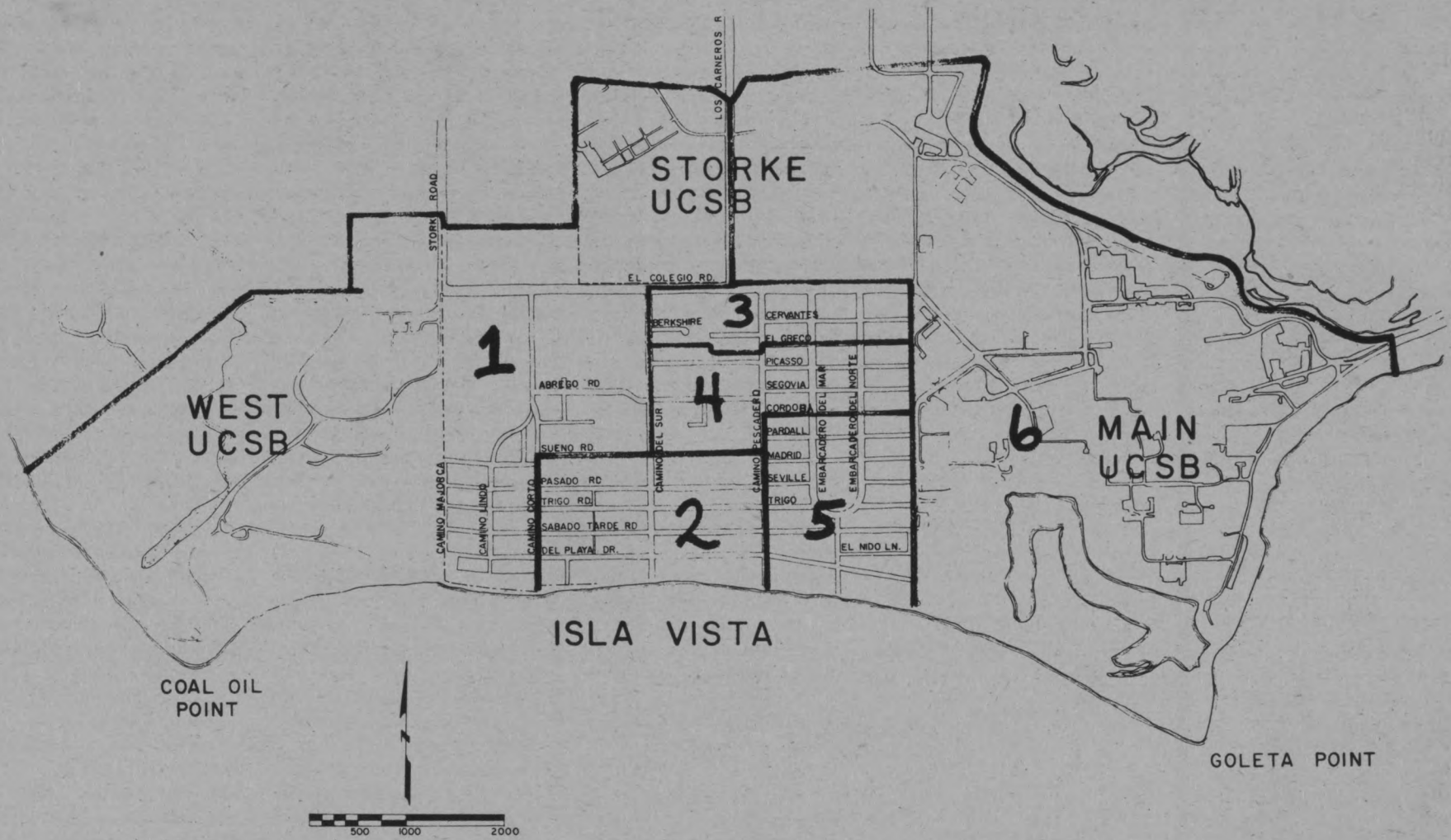
Editorial offices: 1035 Storke Communications Building, UCSB, phone 961-2691. Advertising offices: 1045 Storke Communications Building, UCSB, phone 961-3829. Gayle Kerr, Advertising Manager. Second class postage paid at Goleta, California 93017. Printed by Campus Press, 323 So. Magnolia, Goleta, California. Please return P.O. form 3579 to P.O. Box 13402, University Center, Santa Barbara, California.

### DOONESBURY

by Garry Trudeau



# SAMPLE BALLOT-IVCC election Nov. 7



## IVCC election

The IVCC representatives serve a one-year term. Weekly council meetings are held on Monday evenings at 7:30 at the I.V. Planning Office, 966 Embarcadero del Mar. Candidate pictures appear on pages 6 and 7 of this issue.

### AT LARGE - VOTE FOR 3

- JoAnne Yokota
- Al Plyley
- David Bearman
- Darrel Spurling
- Zail Coffman
- Cochise Hernandez
- Allan Riley
- Dex Anderson

### DISTRICT 1

- Robert Martin

### DISTRICT 2

- Dan Hentschke
- Bill Wallace
- Andy Braun

### DISTRICT 3

- Wendy Sue Cohen
- Perry Adams
- Leslie McFadden

### DISTRICT 4

- Boyd Crow
- Carmen Lodise

### DISTRICT 5

- Steve Logan
- Jon McElvaney
- Lee Fishel

### DISTRICT 6

- Jaime C. Cummins
- Trish Davey

## Plebiscite

The plebiscite will direct the Council-elect to pursue whichever form of government is chosen for Isla Vista. Descriptions of the forms appear on page 8 of this issue.

Vote for the one that you prefer most:

**INCORPORATION:** An incorporated city or town of Isla Vista. Full empowerment under state statutes of a General Law City.

**INCLUSION WITH GOLETA:** Participation in whatever governmental form the rest of Goleta Valley chooses.

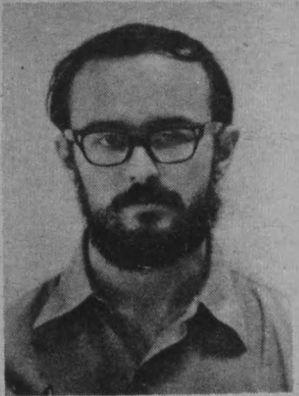
**COLLEGE COMMUNITY SERVICES DISTRICT:** A multi-service district with control over some critical services and advisory input to the County of Santa Barbara.

**MAINTENANCE OF STATUS QUO:** Maintenance of the IVCC and an Isla Vista Municipal Advisory Council. County maintains primary governmental responsibility.

**Any resident of I.V. 16 years or older may vote, registered or not.**

**Voting booths will be outside all general election polls.**

# IV Community Council candidate profiles



ZAIL COFFMAN

## AT LARGE

### ZAIL COFFMAN

1. Consulting arithmatician
2. Dog Commission; IVCCS Board-5 mos.
3. 25 years old; 1½-yr. resident.
4. More progress toward local government by more involvement with I.V. by the concept that IVCC should lead by example.

### AL RILEY

1. Student
2. 1st quarter freshman political science major; E.S. chairman for form hall
3. 17 years old; 1 year resident.
4. He could represent most of the students; mainly new students will be living in I.V. later; this means issues taken up now will be of concern later when students move to I.V.; more a bridge between I.V. and A.S.

### AL PLYLEY

1. At present, free-lance commercial artist; hopes to develop an ad agency to support his daughter and himself.
2. Involved in the I.V. struggle to gain control of services and planning since 1970, involved in beginning of the I.V.C.C.; Chairman of the IVCC Police Review Board; involved with I.V.C.C. II, and Rep at-large for I.V.C.C.

III; as I.V.C.C. Rep served as rep to the County Board of Supervisors, Credit Union Committee, rep to the Goleta Valley Unified School Dist. supported POISE proposal for an open classroom. I.V. Health Committee, liaison from the I.V. C.C. to the law enforcement agencies, the Incorporation Feasibility Committee, and the Committee to gain a Municipal Advisory Council structure for Isla Vista.

3. 39 years old; "of reasonably sound mind"; 4-year resident.
4. Primary effort will be directed toward gaining whatever form of empowerment the people choose in the plebiscite, hopefully incorporation; will work to insure that whatever the form of government, the people are an active part of the decision-making process.

### JO ANNE YOKOTA

1. Citizen of I.V.
2. IVCC Council member 71-71 Past bookkeeper of Whole Wheat Food Co-op; researched open space in IV for long-range plan; wrote history of IV for long-range plan; IVCC rep on I.V. Government Study Phase II; Member: IVCC Local Gov't Committee (Chairwoman); I.V. Health Committee; I.V. Planning Commission; Santa

Barbara Trails Committee for Bikeways from S.B. to Lompoc; I.V. rep on citizens committee for open space element of S.B. Co. General Plan; I.V., UCSB, County Joint Planning Committee.

3. 23 years old; 3-year resident
4. Is a strong advocate for the incorporation of I.V. and plans to continue her work toward local control of the past year with the addition of much more knowledge and experience. Welcomes alternative institutions in I.V. that are beginning now, and wants to see a storefront food coop become a reality during the next year; this is one of her major concerns now and for the coming year.

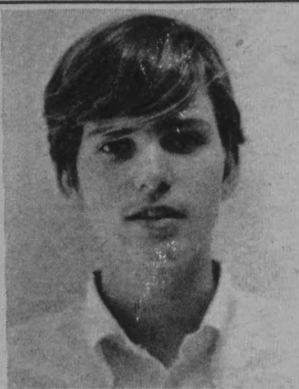
### DEX ANDERSON

Isla Vista should incorporate now. Then will come the chance to have much greater control over our own lives. Laws agreeable to the County of Santa Barbara are often unjust for the community of Isla Vista. With approximately \$600,000 provided annually by the State, the City of Isla Vista can survive economically. Isla Vista has the human resources to intelligently experiment with new ways of living and we should not pass up the opportunity. If we don't want a city built around the automobile we don't have to have one because we aren't

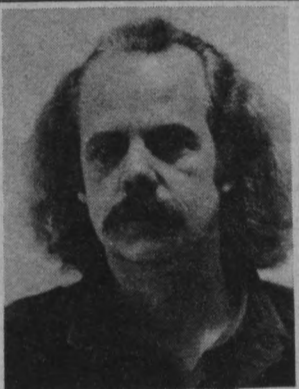
addicted to it yet. If we want a police force that protects us only from actions that interfere with our right to life, liberty, and the pursuit of happiness we can have one. Isla Vista has the potential for these things and I want us to exploit it.

### DAVE BEARMAN

1. physician
2. Medical director of Isla Vista Open Door Clinic; Member Isla Vista Community Council; Chairman of the McCarthy for President 36th Congressional District; Lecturer UCSB-Human Sexuality; Advisor UCSB chapter of the Red Cross 1971-72; Member of Isla Vista Health Committee; medical columnist for Nexus and old I.V. Initiative; Vice President of Southern California Council of Free Clinic; consultant to the Isla Vista Government Study; consultant to East Santa Barbara Health Task Force.
3. 31 years old; 2¼-yr. resident.
4. The most important issue is that of self-determination. Studies have proven that incorporation for IV is responsible and he supports incorporation for IV. Continues to endorse the formation of the IV Justice Court. Supports more foot and bike transportation, (Continued on p. 7, col. 1)



ALLAN RILEY



AL PLYLEY



JO ANNE YOKOTA



DEX ANDERSON

### BILL WALLACE

1. Veterinarian
2. Isla Vista Community Council, 1971-72; Goleta Valley Citizens Planning Group; Citizens for a Responsible Water Policy; coordinator for the Water Initiative in I.V.; IVCC rep. to Goleta Valley Gov't Group; I.V. Pet Commission; IVCC rep. to Human Relations Program;
3. 31 years old; 2½-year resident
4. Advocates incorporation for Isla Vista. Believes I.V. must however, still be concerned with problems of the rest of the Goleta Valley. Particularly concerned about a water shortage and urges support of the Water Initiative. Author of IVCC Dog Detention Center proposal.

## DISTRICT 2

### DAN HENTSCHE

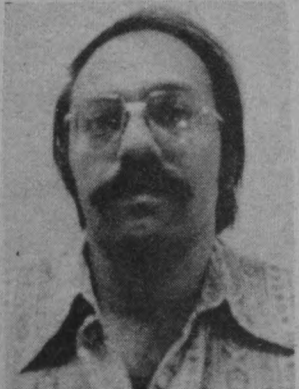
Student  
Regular attendance at IVCC meetings Work on I.V. Justice Court Initiative NEXUS staff writer - county affairs, politics  
20 yrs. old-14 yrs. in Santa Barbara 1 yr. in I.V.  
If Isla Vistans are going to get the basic critical services they need in the way they want to have them Isla Vista will have to incorporate. I fully support incorporation and will work to attain this goal. In the mean time I will work toward beautifying I.V. through open space acquisition and implementation of the Transportation Study. I will also urge that the campus police take over the foot Patrol and implement a Community

Service Officer program. As for dogs, I would make dog care information readily available and ask the county to give animal control officers more discretion over what dogs he needn't impound.

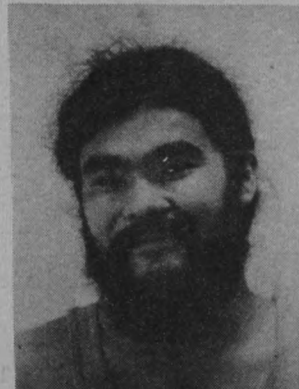
### ANDY BRAUN

1. Community organizer, cosmopolite, psychic researcher, celestial roller.
2. Has travelled the world studying local gov't; has found the key to be participation; as a community organizer (People's Caucus, Nader's Raiders) has mobilized groups of citizens for joint action, political feedback, and block parties.
3. 24 years old; 6-yr. resident

4. The most important issue is self-determination. Incorporation will mean control of the community. The citizens of I.V. will direct the policing, sanitation, parks, gardens and the growth of I.V. I.V. can be an example to other communities. IV needs a food co-op market to rid itself of the outrageous prices for survival commodities. A co-op market community owned and operated could sell higher quality food at close to half the current prices. Wants more parks and gardens. Wants to get rid of the foot patrol whom he feels are here to bust and not protect; Police should serve, not intimidate.



DAVE BEARMAN



STEVE AMANO



BOB MARTIN



BILL WALLACE



DAN HENTSCHE

**DISTRICT 3**

**WENDY SUE COHEN**

1. Works at Sun and Earth
2. Member of Student Association, and Student Mobilization Committee.
3. 19 yrs. old, 1 year resident
4. Running in coalition with Jon McElvaney (Dist. 5) See platform under Jon McElvaney.

**LESLIE McFADDEN**

1. Student
2. Political Science major; worked extensively with the Hart campaign; attended IVCC and Board of Supervisor meetings
3. 20 years old; 2 years resident

4. Incorporation gives us the autonomous power to handle our own affairs. I.V.C.C. must communicate such potential to Isla Vistas through collective district meetings, questionnaires, a weekly newsletter, a telephone service, and responsive I.V.C.C. meetings.

**PERRY ADAMS**

1. Journalist
2. Editor of PROBE and ARGO
3. 34 years of age; 7-year resident
4. a. Wants to strive for I.V.'s political independence.  
b. Wants to promote district councils.

**DISTRICT 4**

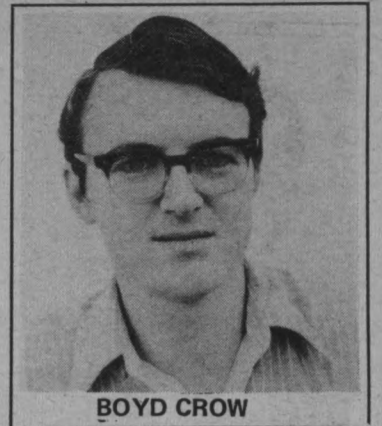
**CARMEN A. LODISE**

1. Economist
2. Government Study community communicator
3. 33 trips around the sun; 1-year resident.
4. Within District 4 is a group of Isla Vistas who are attempting to relate as a neighborhood. During October they have had four get-togethers including a Saturday afternoon street party and a Friday night pot-luck dinner; their immediate purpose is getting to know each other. Their long-run hope is to be prepared for I.V. self-government. As a part of this, they wish

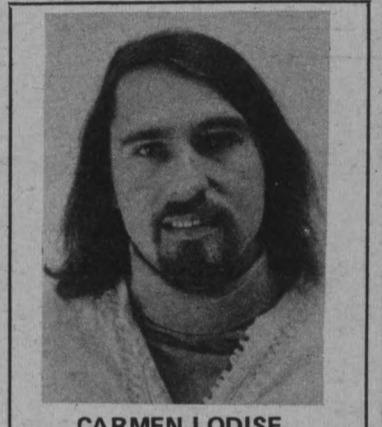
to get some practice at dominating government from their neighborhood. CAL is the candidate put forth by the Fourth District Neighborhood Organization.

**BOYD CROW**

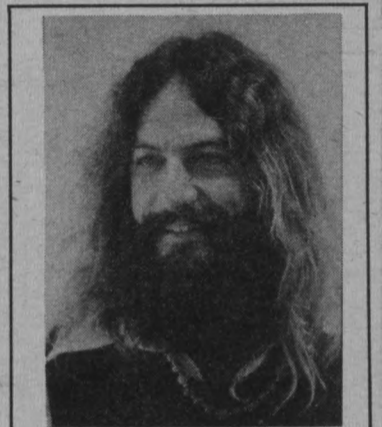
1. Searcher of land title irregularities
2. 6 months USAFA cadet (resigned), jobs from computer programming to motel maid to typist, amateur science fiction writer and photographer
3. 20 years old; 3-year resident
4. Commitments: clean streets, realistic government, incorporate I.V. with Goleta, alternative pet propoganda, accept personal responsibility rather than decrying apathy.



BOYD CROW



CARMEN LODISE



JON MCELVANEY



LEE FISHEL



JAIMIE CUMMINS

**DISTRICT 5**

**JON McELVANEY**

1. Sun and Earth manager 2 yrs.
2. worked 3 yrs. organizing safety department Worked for Devereux Foundation and now at Sun & Earth.
3. 32 years old, 5 year resident
4. Running in coalition with Wendy Sue Cohen (Dist.3) Support Park district, including cleaning up streets and beaches. Advocate Incorporation of I.V., foot patrol replaced by community safety department. Also would like to start Youth Hostiles.

**LEE FISHEL**

1. Student
2. Political Science major; interest in ombudsman function of IV Council members
3. 21 years old; 3½-year resident
4. Believes that the Council members should reach out to the community and perform a liaison function between the individual and the government. Wants to help the individual who has had trouble with government bureaucracy; feels that Council should make an effort to reach its constituents.

**STEVE LOGAN**

1. Maintenance person for I.V.
2. Former Director of KCSB news, UCSB dropout, spokesman for the 5th district collective
3. 23 years old; 3-year resident
4. THE FIFTH DISTRICT COLLECTIVE:  
Ed Carroll - IV Arts Program; 3-yr. resident; 25 years old.  
Barbara Curbow- interested in Political theory and its application in the community, student, 3-yr. resident, 21 years old.  
Gary Frye- interested in conveying politics to the people in I.V., 4-mos. resident, 20 years old.

Eric Hutchins- former member of IV Gov't Project, member IV media Group, writer for IV Quarterly, printer by trade, 6-yr. resident, 24 years old.

Frank Johnson- student, 3-yr. resident, 20 yrs. old.  
Scott Kennedy- IV Youth Project director, counselor, University Methodist Church, 4-yr. resident; 24 yrs. old.  
DeeDee Taylor- teacher's aide of Isla Vista School, student, 2-yr. resident, 19 years old.

The 5th District Collective is an activist collective in which everyone shares the joys, responsibilities, and occasional frustrations of giving themselves and everyone else in the 5th district the option of personal growth and democratic influence thru community involvement. Their function is to clarify issues and poll the resultant opinions of those interested by focusing of democratic methodology in a group context, they reject the forced paternalism of individual "Big Issue" politics.

**VOTE  
NOV. 7**

**At Large Continued**

beautification of IV, picking up of derelict autos, creation of parks and open space. Also supports neighborhood and block parties as well as community picnics to enhance togetherness. And, supports the sale of alcohol in IV.

**COCHISE HERNANDEZ**

No information available.

**DARREL SPURLING**

No information available.

**STEVE AMANO**

Withdrew candidacy at press time.

**DISTRICT 1**

**ROBERT MARTIN**

1. Insurance business
2. Charter member and pres. of I.V.A. Charter member of Goleta Valley Citizens Planning Group. General Plan Advisory Committee UCSB Master Plan Advisory Committee Homeowner.
3. 48 years old; 12-year resident
4. a. Strong advocate for local government and Park District.  
b. Supports I.V. Planning effort.  
c. Feels good move to broaden district 1 to include Married Student Housing.

**DISTRICT 6**

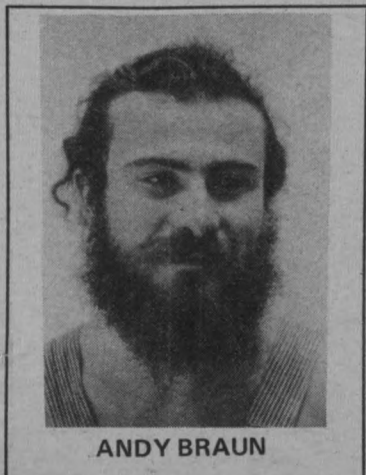
**TRISH DAVEY**

1. Student
2. Participant in E.V.C.C. meetings; Resident Halls Association; Political Science major.
3. 19 years old; 1½-year resident.
4. a. to proceed with incorporation and/or CCSD;  
b. to develop a symbiotic relationship between University resources and I.V.  
c. promote a larger, stable population - the year round constituency.

**JAIME CUMMINS**

1. Student
2. Member People's Caucus Government Study in Sacramento
3. 19 years old; 2-year resident
4. Wants to see Isla Vista move toward a form of self-government, namely incorporation; however, stresses the need for a responsive government which is citizen oriented - that is, a government which seeks and encourages criticism and input from the community. Does not want I.V.'s government to become another bureaucracy.

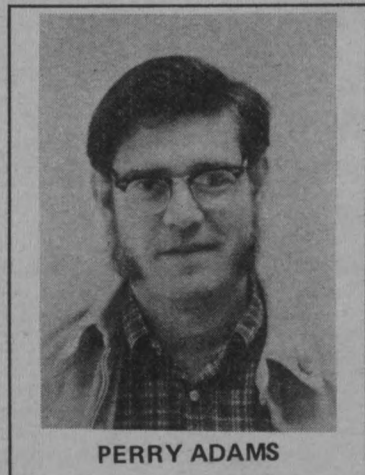
**SAMPLE BALLOT  
PAID FOR BY  
IVCC**



ANDY BRAUN



WENDY SUE COHEN



PERRY ADAMS



LESLIE MCFADDEN



TRISH DAVEY

# What kind of government for Isla Vista?

You will be voting for one of the four options. Any option that receives a majority of the votes cast will be pursued by the newly elected Community Council during the coming year.

## THE SITUATION

Isla Vista is presently governed by the Santa Barbara County Board of Supervisors. As part of the vast unincorporated area known as Goleta, Isla Vista has been governed by the Board since it was developed as a "bedroom community" for the University of California at Santa Barbara in the 1960's.

In 1970 three riots took place in the "student community" of Isla Vista. Several major reasons were cited as cause for these disturbances. One was the ongoing war in Vietnam. Another was the firing of a popular Anthropology Professor at UCSB. A third was a poor living situation that was said to be present in Isla Vista.

The idea of Self-Government for Isla Vista developed because of the third

reason. Streets were too narrow, cars made it nearly impossible to bike or walk or find areas conveniently available for recreation. Isla Vista had been planned poorly but had enriched the developers of the ¾ of a square mile area. There was widespread disapproval of the practices of the management firms that controlled approximately 50% of Isla Vista's rental units. There was little to do in terms of social activity and because Isla Vista was nearly totally a community of persons under age 30, the interest and stability provided by a heterogeneous community was not present.

There was also widespread distrust of the police in Isla Vista and a bitterness lingered after the riots because of poor police practices during the disturbances.

Shortly after the 1970 riots two important resources became available in Isla Vista. First, citizens established an organization known as the Isla Vista Community Council and second the Regents of the University of California allocated \$684,000 to be spent over a

period of two years for the improvement of the Isla Vista-UCSB Community.

The Isla Vista Community Council began involving itself in almost all aspects of Isla Vista life and worked very closely with representatives of the County Government and the University, representing Isla Vista to these two "empowered institutions".

The I.V. Government Study undertook the job of finding practical methods of meeting Isla Vista's unique needs. How would we be able to make law enforcement agencies responsive to the desires of our Community? What services that government provides did citizens of I.V. feel were not being provided adequately and how would we provide them? What governmental forms might be available to us and were they politically, socially, and economically feasible?

Below you will find four options that the I.V. Government Study and the Isla Vista Community Council has found as real possibilities for the future governance of Isla Vista. They each have some merits

and some disadvantages or at least areas of doubt. We attempt to give a reasonably clear picture of what these governmental entities can and cannot do and what they might mean to Isla Vista.

Some progress was made. The County slowly began to accept and implement many of the recommendations made by the elected Community Council. A new traffic plan was accepted and implementation was started that is still continuing today. The IVCC was also instrumental in having the County authorize an election to form the Isla Vista Park and Recreation District. The University accepted many of the recommendations made by the IVCC on how the \$684,000 should be spent in I.V. Some of that money went to finance the IVCC, the Isla Vista Community Service Center, the Isla Vista Foot Patrol, an Isla Vista Newspaper, the Isla Vista Youth Project and perhaps most importantly of all, approximately \$25,000 was spent on two phases of the Isla Vista Government Study.

## Status Quo

### STATUS QUO

**Present Situation:** Main Governmental authority rests with Santa Barbara County Board of Supervisors. Supervisors will appoint new IVCC as an Isla Vista Municipal Advisory Council which will give Isla Vista an Official Advisory voice in all County decisions affecting Isla Vista. I.V. will also have an empowered Park District to administer Madrid Park and perhaps purchase other open space. University has promised funding of approximately \$25,000 annually for an unspecified period of time for IVCC and I.V. Planning. (IVCC will serve as the Municipal Advisory Council) County will provide no funding for IVCC I.V. Foot Patrol presently funded by State and it is unclear whether County will vote to pick up their half of the Foot Patrol tab. Some grant monies may be available to I.V. in the near future through Advisory Council.

### PRO ARGUMENTS

- We have significant voice with the County and University and do not need more.
- Very little money is necessary to maintain status quo.
- We are not mature enough to administer effectively any larger governmental form.
- We will lose influence on area wide planning matters if we divorce ourselves from the County Structure.
- I.V. should not shackle itself with responsibilities it cannot handle.
- I.V. is too much of a transient community for stable empowered government.
- I.V. should avoid establishing any

bureaucratic institutions.

- Isla Vista should not seek to become more than it is — a UCSB Bedroom Community.
- Will lose ability to draw help from experienced County Personnel.

### CON ARGUMENTS

- Advisory power is only advisory and results come slowly and are often tenuous.
- The County and the University have allowed Isla Vista to be "ripped off" by the developers. Further lacks of responsibility by these two institutions cannot be risked.
- Money controls what services are offered and how they are offered. The status quo has no control over taxation and only very limited funding sources. The sources themselves are suspect and could never be expected to give with "no strings".
- The County will never have the courage to undertake Land Protection Programs in Isla Vista and would not devote any money for that purpose.

- Advisory government means they give you as little as they have to.
- We may have significant input on most things with the County but when it comes to policing and land use the County will do whatever it wishes.

- Massive money is needed to implement the very innovative Transportation, Housing and Welfare plans that have been developed by Isla Vistans. Advisory Government means that those plans will remain dreams.
- Any town where 12,000 people live should have its own government. County government is too far away both physically and philosophically.

## Inclusion with Goleta

### INCLUSION

**What it is:** Goleta is expected to either annex with the City of Santa Barbara or Incorporate as a city within the next few years. Isla Vista is presently considered part of the Goleta Valley and there is mixed feeling in Goleta on whether or not they desire Isla Vista as part of their city. With large state subventions because of our large percentage of registered voters we are a financial bonanza to any larger government. However, Goletans may be fearful of more civil disturbances. A city of Goleta would extend from the boundaries of Santa Barbara City and include Hope Ranch, Isla Vista and north some four miles or so.

### PRO ARGUMENTS

- Would provide a broadly based government for the entire Goleta Valley.
- Our Inclusion would lessen the tax burden on Goleta.
- We would maintain a direct voice on

planning matters in the Goleta Valley.

- Would protect Isla Vista from a young populace that may sometimes make immature governmental decisions.
- Would include Isla Vista in more realistic and broader fights for social change.

### CON ARGUMENTS

- Will require a tax increase in Isla Vista.
- Will continue Isla Vista non-empowerment over the vital issues of policing and land-control.
- Will greatly inhibit Isla Vista independence and ability to innovate.
- Will reduce by hundreds of thousands of dollars the resources that could be used to regenerate Isla Vista. This regeneration is only necessary because outside government was irresponsible and unresponsive in the years of development.
- The cultural differences between Goleta and Isla Vista would mean perpetual frustration for both Communities.

## CCSD

### COLLEGE

### COMMUNITY SERVICES DISTRICT

**What it is:** Presently a bill authorizing Isla Vista and the County Board of Supervisors to establish a special services district has passed the state senate and is expected to pass the state assembly shortly.

The College Community Services District would be a partially empowered governmental entity. Like the status quo it would provide for Official advisory input to the County. It would also provide for an advisory Area Planning Council. However, the SSCD can also control some special services like animal control and police and lighting. The district would have some real taxing powers and it is expected that revenues would be approximately \$130,000 annually raised through a head tax on each Isla Vistan over the age of 18 or \$10 per year. The District would be administered by a Council operating in the limited areas provided just as a city Council would. The Council members would be Isla Vistans. The district would include the UCSB Campus within the boundaries. Legislation for the District was sponsored by Senator Lagomarcino at the request of the Isla Vista Government Study.

### PRO ARGUMENTS

- Gives Isla Vista some empowerment

and maintains advisory ties with the County of Santa Barbara.

- Gives Isla Vista revenue to maintain bureaucracy of government and control over several services.
- Can be an interim form of government if we wish to Incorporate at a later date.
- Requires less political maneuvering to implement.
- Does not cut us out of the County Planning Process.
- Is a "pay as you go" form of government.

### CON ARGUMENTS

- Holds out a promise of empowerment that is not real. Cannot control land use and will not have enough revenue to provide policing.
- Requires a head tax which is difficult to collect and is regressive.
- If selected as an interim form before Incorporation will affect negatively the financial advantages of Incorporating early in a decade.
- Does not have nearly enough economic resources to make a large beneficial impact on the quality of life in Isla Vista.
- Sets up all sorts of possible jurisdictional conflicts between the County the University and Isla Vista.

## Incorporation

### INCORPORATION

**What it is:** Cities incorporate under General Law Statutes of the State of California. Cities are empowered and required to provide for all critical services within the area of their boundaries. Cities provide policing, zoning, land use, planning services, water, lighting, parks, fire protection, sewage, sanitation, etc. A city is administered by a five member City Council unless it becomes a Charter City which Isla Vista would probably become after several years. A city in Isla Vista is expected to receive at least \$600,000 in state money annually, at least until 1980. It is expected that no tax increase would be necessary at least until that time. The Isla Vista Government Study has made the finding that a city of Isla Vista can operate on a yearly budget of between \$400,000 and \$700,000 depending on the level of service desired by the residents.

### PRO ARGUMENTS

- Incorporation offers us the maximum possible financial resources.
- Incorporation is the only option that does not involve a tax increase.
- With Incorporation we will have the resources to attempt and succeed in our hopes to create an innovative educational community.
- An innovative and empowered Isla Vista will benefit the University of

California and will enable the entire Santa Barbara area to get additional grant resources.

- Incorporation is the only means with which we will be empowered to deal with our two largest problems— police and land use.
- Incorporation is the only means by which we can expect enough resources to be sure that government is responsive to the wishes of the people.
- Virtually every person that has been involved in I.V. affairs over the past several years favors Incorporation.

### CON ARGUMENTS

- I.V. is not mature enough.
- I.V. is too transient.
- With that much money Isla Vista would end up another pawn of governmental bureaucracy.
- We have no right to accept that much state money since we will be getting it because our subvention level is computed according to our registered voters.
- Our Incorporation will have ghastly effects on the citizens of Goleta and will force them to pay higher taxes when they Incorporate.
- We will lose our influence on the growth of Goleta and our influence in the County planning process.
- We should not create a "radical Political Island" in Isla Vista.







# IM kiosk

Rod Laver, Stan Smith, John Newcombe, Ilie Nastase, Pancho Gonzales, Billie Jean King, Chris Evert, Evonne Goolagong and Rosie Casals will not be at the IM Tennis Tournament to be held Saturday, Nov. 11, at both the Stadium and West courts beginning at 9 a.m. sharp. Due to the noticeable absence of such stars, the tournament is considered a wide open affair.

Men's singles and doubles and women's singles and doubles will highlight the action. All contestants are requested to bring a can of balls. Non-students are eligible to participate by paying a \$5 fee (which allows for participation in all IM events for the year) at the UCen cashier's office.

Sign-ups are due in the IM office by 5 p.m. Thursday, Nov. 9. All contestants are asked to report to the West Courts (by Robertson Gym) at 9 a.m. sharp on Sat., Nov. 11.

\*\*\*\*\*

Men's, women's and coed badminton flies into action this weekend in an open IM badminton tournament. All entries are due in the IM Office by 2 p.m. Thursday, Nov. 2. Open and women's singles and



**MEN'S INTRAMURAL two-man basketball action winds up today with final matches being played on the Activity Pad next to Robertson Gym this afternoon and evening.**

doubles, plus mixed doubles will compose the five events. Further information can be obtained by calling 961-3253.

\*\*\*\*\*

Coed golf tees off next week at the University Village Golf Course, or quite possibly, Par Three. Though the place of competition is yet to be decided, rosters must be into the IM Office by this Friday, Nov. 3, 5 p.m. Teams must consist of one man and one woman. Winners will be determined by the team with the lowest composite score.

# Kickers bow to Berkeley, 3-2

Last weekend's all University of California soccer tournament at Davis officially ended Saturday as Berkeley outplayed the Gauchos 3-2, and took the championship.

Santa Barbara had been number one seeded (nationally ranked UCLA declined to partake) but found the going rougher than expected. The Gauchos played a set of games that rank among their most exciting with goals that were spectacular.

The Gauchos opened on Friday against Riverside and were breezing along a 2-0 lead when suddenly Riverside gained such momentum and hustle that the Gauchos were left 3-2 behind. Time was running out and in great comeback tradition the kickers managed to score two more goals in the final minutes to triumph 4-3. Doug McKibbin was the leading scorer with three goals.

Saturday afternoon Santa Barbara met Cal to decide the championship. The Cal offense

was so good that were it not for center fullback Helmut van Hain the score would have been much higher than the 0-3 at halftime. The second half began much the same way as the first half. The Gauchos were going against a smoother team, one who outthrustled and outshot them. Slowly Cal's domination began to ebb and the last one-third of the game belonged to the Santa Barbarans. In the last 15 minutes they managed to score two more goals and would have had more had Cal not had an extraordinary

goatee. The final score was 3-2 for Cal.

In the consolation round Santa Cruz rushed past Davis 4-1, for third place.



"McGovern says he's behind me

1000%"

- Tom Eagleton

what happened?

He changed his mind!!

Sponsored by California College Republicans

## LAST DAY TO ENTER the Recreation Department's PHOTO CONTEST

Theme: "MOODS"

PRINT AND SLIDE DIVISIONS

Judging: THURS, NOV. 2, 7:00 P.M. UCen 2284

**\$10 FIRST PRIZES**

Submit Entries at the Rec. Office. For more info Call 961-3730.

**ENTRIES CLOSE 5 p.m. TODAY**

WELCOME STUDENTS

VOLKSWAGEN  
PORSCHE  
FOREIGN CAR  
SPECIALISTS

**CASEY'S GARAGE**

5724 Hollister Ave.  
Ph. 964-3600

### SCUBA DIVING CLASSES

Conducted throughout the year.

NAUI CERTIFICATION

AIR • RENTALS • REPAIRS  
Complete Service for Sport Divers - Including Custom Tailored Wet Suits which are made here at the shop

CLOSEST TO THE CAMPUS - PARK RIGHT AT THE DOOR

**BOB'S DIVING LOCKER**  
and Hurricane Charters, Inc.

500 Botello Road, Goleta 967-4456  
OPEN 9-6 Tues. thru Sat. Closed Sun., Mon.  
(In the 6000 block of Hollister, just west of Fairview, turn North at the Drive-in Theatre entrance, shop is on right, 200 yds. from Hollister.)

## A career in law ... without law school.

When you become a Lawyer's Assistant, you'll do work traditionally done by lawyers — work which is challenging, responsible and intellectually stimulating. Lawyer's Assistants are now so critically needed that The Institute for Paralegal Training can offer you a position in the city of your choice — and a higher starting salary than you'd expect as a recent college graduate. Here is a career as a professional with financial rewards that increase with your developing expertise.

If you are a student of high academic standing and are interested in a legal career, come speak with our representative.

Contact the Placement Office.  
A representative of The Institute  
will visit your campus on:

**TUESDAY, NOVEMBER 14**

NOTE: If the above date is inconvenient for you, please call or write The Institute for information.

**The Institute for  
Paralegal Training**

13th floor, 401 Walnut St., Phila., Pa. 19106  
(215) WA 5-0905

# HOT TUNA



SPECIAL GUEST

**DAN HICKS & HIS HOT LICKS**

**SATURDAY, NOV. 11 - 8:00 P.M.**

**ROBERTSON GYM**

Buy Your Tickets Early As it Will Sell Out

**TICKETS AVAILABLE TODAY**

UCen Information Booth  
Morninglory Music

\$3.50 Students  
\$4.00 General

### Bliss...

(Continued from p. 1)  
 land just happened to be "conveniently located between a shopping center and a major freeway interchange, both of which Bliss had earlier approved," alleges Probe. Bliss pointed out that this land is still "only agricultural."

#### THE REAL BLISS

With only a little over a week before Election Day, Probe warns that "it is important for the voter to question whether there is really a "new" George Bliss and whether this man "favors limited growth and always has."

Probe offers some insight. "Two years ago, a rezoning for a massive leapfrog development (the so-called El Capitan project) on coastal land miles west of Goleta was overturned by county voters." But, alleges Probe, it was George Bliss who headed the unsuccessful attempt to sell the project to the voters."

Probe, in continuing, alleges: "The new George Bliss warns that the coastline initiative (Proposition 20) would take

away local control and claims that local control would have kept the oil industry out. This indeed is "new talk" for the man who was part of Citizens for Local Oil Control, a group which wanted MORE oil tank farms along the coast. It's new talk for the one time planning commissioner who okayed rezonings and oil permits for the oil companies."

As for expediency, Probe comments that "in the face of increasing anti-growth sentiment, Bliss and developer allies have found it politic to talk about CONTROLLED growth."

Bliss labels strict no-growth as both extremism and emotionalism.

Answering the emotionalism plea, Probe wonders whether that implies "that there's something wrong with emotionalism. What could be wrong with the feelings of revulsion and anger aroused by demolished groves of trees, stinking airs, befouled waters, bulldozed orchards, cement lined creeks, cluster subdivision, oil tanks on the ocean bluffs and own-your-own tenement house cubicles?"

Probe also scrutinized Bliss' recent action, or inaction, in the recent Ellwood tree-cutting affair.

Probe explained that Ellwood property owner Walter Olson mowed down eucalyptus trees to avoid an unfavorable environmental impact statement still unfiled on a proposed shopping center.

Protesting citizens were met with hostility by Olson, who had County Supervisor candidates Jim Slater and Bliss' rival Frank Frost arrested for trespassing when they refused to leave the area.

When the NEXUS later asked Bliss if he considered taking part in this incident, he replied, "I do not have all the facts."

George Bliss, as it turns out, "is head of the County Bank which is financing Olson," says Probe. Bliss said he did not know his bank was financing Olson.

Probe, recounting the "public record," investigated two other areas: Chicano concern and campaign spending.

"The public record clearly shows Bliss helping his friends—his rich friends like the Bailards—and HIMSELF. The public record does not show George Bliss planning better roads, adequate street lighting, adequate sidewalks, adequate drainage systems, but rather it shows him getting rezoning for his friends," alleges Probe.

### Chavez...

(Continued from p. 1)  
 state—the migrant farm worker. This stinks of the racism and vested interests that have kept people in misery and poverty for too many years."

Nevertheless, the suit was dismissed Oct. 6 in Sacramento because there was "some considerable doubt" that the case could be tried before the November election.

Local Chicano student and community organizations have arranged a series of activities in the area at Chavez' request, so that he may meet the people of Santa Barbara.

In addition to 12 p.m. session on the UCen lawn, a full evening is scheduled:

5 p.m.-6 p.m. Benefit Dinner at Union Trades Building, 415 Chapala St. Donations: Adults \$1.50, Children 75c.

6:30 p.m.-9 p.m., Chavez will speak at La Cumbre Junior High School Auditorium. El Teatro Chicanito Tiburcio Vasquez will entertain.

9 p.m.-1 a.m., Benefit Dance for the Farm workers at Union Trades Building, 415 Chapala St.



# TODAY, 3 P.M.,

# UCEN LAWN

MEET AND HEAR

TERRY McGOVERN,

SEN. McGOVERN'S DAUGHTER

CANDICE BERGEN,

ACTRESS, PHOTOGRAPHER

ASSEMBLYMAN JOHN BURTON

(D-SAN FRANCISCO)

MUSIC BY LARRY TYRRELL AND FRIENDS

PRESENTED BY STUDENTS FOR McGOVERN - SHRIVER 6527 MADRID ROAD ISLA VISTA 968-3011

