

International

● **BRITISH ELECTIONS SET**
Recent polls in England indicate that the race between the Conservative and Labor Parties could be close when the polls open Oct. 15. Prime Minister Sir Alec Douglas-Home, however, expressed confidence in gaining re-election. If the Conservatives should win, it would be their fourth consecutive victory.

● **VATICAN AND HUNGARY REACH ACCORD**
The Vatican and Communist Hungary signed an historical agreement on Church-state re-

lations and expressed a willingness to continue negotiating Tuesday. Pope Paul VI announced immediately that he had named five new bishops and confirmed a sixth nominated by Pope John XXIII but never consecrated. The fate of Cardinal Mindzenty, who has been in the U.S. Embassy since 1956, has not been decided.

National

● **GOLDWATER IN DIXIE**
Senator Barry Goldwater, in his bid for the presidency, swung through the South yesterday, criticizing the Supreme Court and delivering a scath-



ing attack on President Johnson. He visited Tennessee, Georgia, Alabama, and North Carolina.

● **JOHNSON LAUNCHES CAMPAIGN**
President Johnson began a week of coast-to-coast campaign travel Tuesday with a pledge to keep America first in space. He also urged passage of Medicare legislation. The president was on a 90-minute tour of Cape Kennedy space facilities. He will fly to Port-

land, Ore. today, and then to Sacramento.

State and Area

● **FOOD STRIKE CONTINUES**
Southern California began to feel the impact of the wholesale food industry strike-lockout yesterday as negotiators saw no quick end. Little panic buying has occurred. Products in the strike are mostly dry and canned goods as produce is distributed normally by members of the Associated Produce Dealers and Brokers. The fight is between the Teamsters Union and 56 wholesale food com-

panies in Southern California.

● **DA'S ATTACK COURT**
Two recent murder conviction reversals by the State Supreme Court were attacked by Atty. Gen. Thomas C. Lynch and 55 district attorneys yesterday. Fifty-five of California's 58 counties were represented in the 37 page report. The petitioners contend that if the decisions are allowed to stand, "literally hundreds of pending cases, both at the appellate and trial level, many involving the most serious and heinous crimes, will be jeopardized."



El Gaucho

TODAY'S WEATHER

Continued low stratus clouds. No change in temperature.

Vol. 45 - No. 1

Associated Students, University of California, Santa Barbara

Thursday, September 17, 1964

Isla Vista dope ring smashed during summer

By STEPHEN RITTENBERG
Assistant News Editor

While students pursued their studies last June, the Santa Barbara sheriff's department, with the help of the campus police, pursued dope peddlers to prevent further dissemination of marijuana and barbituates.

After months of investigation sheriff's detectives, district attorney officers and Sergeant Martin Stenson and Officer Robert Gauthier of the campus police raided the home of William Howard Matchett of Isla Vista on the night of June 4.

Matchett admitted having and selling marijuana after the officers found the dope in his home.

The next day sheriff's officers arrested Douglas Neil White, also of Isla Vista, who had represented himself as a medical doctor.

Using the alias Neil White, M.D., White purchased benzedrine, phenobarbital, coricidin, thyroid pills, enovid, and other drugs from a reputable pharmaceutical house in the East.

White admitted leasing a post office box and buying over \$50 of drugs. He further admitted selling some of the drugs and giving others to students.

First indication of the presence of marijuana on campus and in Isla Vista appeared in September, 1963. The Santa Barbara Sheriff's Department spent the next nine months gathering information and following the movements of several suspects.

After a few months a pattern developed, and the police could predict when the suspects would

Brochure free to newcomers

Freshmen and new students who did not receive in the mail a copy of the Gaucho Guide brochure may obtain copies in the Public Information Office, the A.S. Business Office or the EL GAUCHO office.

The 72-page publication was completely revised this summer by Helen Iddings, junior, with the cooperation of the PIO. In the major overhaul, new up-to-date photographs were used, 24 more pages were added, and the size of the brochure was enlarged.

pick up the marijuana.

In the first week of June, after informants purchased marijuana with marked bills in the presence of detectives, the sheriff's office had enough evidence to arrest Matchett, White and Douglas Morrison James, also of Isla Vista.

Matchett was tried in August and found guilty of possessing narcotics. He was sentenced to the state penitentiary for the term prescribed by law.

James was also convicted of selling narcotics and was sentenced to the state prison.

White was given a suspended sentence and placed on probation.

Two other students were arrested and convicted of using narcotics. Knud Bergmann was given a suspended sentence and placed on probation. Robert Layton Mattis was sentenced to one year in jail. The sentence was reduced to 90 days in the county jail as a condition for probation.

The case brought reactions of disgust and bewilderment from local citizens.

Santa Barbara News-Press wondered: "Why should the so-called intellectual aristocracy of our society, the college student, even a small minority of them, the potential leaders of our society, degrade themselves in such a manner."

In an exclusive interview with EL GAUCHO, Captain Willis A. Lowe of the campus stated "No previous cases connected with the campus had been found."

He also said that the extent of this case has been exaggerated by the newspaper. "A total of 32 names were directly or indirectly connected with this case. This is far from 10% of the students as stated by the local media."

Captain Lowe further stated that it is the duty of every person who is present when narcotics are used to report it to the police.

Council passes additional funds

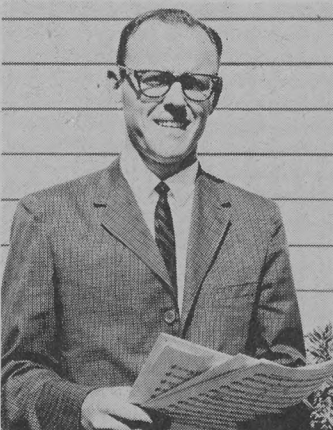
Legislative Council, in the first meeting of the year, passed an additional appropriation of \$21,369.

Convening at Ojai, the place of their annual Council retreat, the student legislators also selected this year's Homecoming

Band to play at key events

Activities, musical instruction, and service to the campus community keynote the upcoming UCSB Band program, according to Director Hal Brendle.

The year's activity program includes performances at home football and basketball games, Galloping Gaucho Revue, Road-



HAL BRENDEL

runner Revue, spring concerts, and Spring Sing.

Brendle has arranged tentative outings for the musical organization which include steps at University of California, Riverside, and the University of San Francisco.

The director emphasized that the band program is designed to minimize time away from studies. Auditing members of the band are required to spend a minimal amount of time at rehearsals. One unit of credit is given for band participation, Music 47-147.

Current rehearsal times are 2:30 to 3:45 p.m. on Tuesdays and Thursdays. A meeting for all interested persons is slated for Tuesday at 2:30 p.m. on the Baseball Field.

theme, granted an additional appropriation to the Foreign Students committee, and by general acclamation, thanked the deans present and the Associated Students Business Manager for their guidance during the conference.

The additional budget was made available by a reduction in the amount of money that the Associated Students allocates to the Inter-collegiate Athletic Office. The Regents of the University had ruled that the Intercollegiate Athletics would gain part of their budget from incidental fees directly, instead of from the Associated Students budget.

FUNDS LISTED

The funds subsequently freed included: 1964-65 Band: Grants-in-Aid, \$3,000; uniforms, \$500; Secretary (part-time) \$500; Instruments and Equipment, \$1,000; total, \$5,000.

A.S. Bus Service: Three used buses, \$4500; maintenance and repairs, \$1200; Insurance, \$450; Fuel, \$600; Licenses, \$75; and Salary for three drivers, \$2400; total \$9,225.

Faculty-student relations: to improve faculty-students relations through luncheons, \$500. Isla Vista Leadership for Or-

ganized housing; workshops similar to RHA; \$1600.

Publications: El Gaucho, Associated Press radio wire, 27 weeks, 12 hours per day, \$1,100; Non-restricted telephone, 1 year, \$188; Saturday Review book reviews, 27 weeks, \$108; total \$1,396; Gaucho Guide, Editor's Grant, 64-65 book, \$150; Expenses and Photography, \$50; total \$200.

La Cumbre, yearbook: 500 additional copies, \$1,325; eight additional pages, \$200; restricted telephone, \$48; total, \$1,573.

Symposia: for a continuation of last year's symposia between Dean's list students and faculty, \$1,875; three symposia.

HOMEcoming THEME

The homecoming parade float theme decided upon Sunday is "America's Heritage." The Special events committee, headed by Kris Rice, is in charge of homecoming activities.

In addition, \$45 was allocated out of regular funds for a tea to be held Sept. 20 for Foreign Students.

The President's Executive Board will meet tomorrow at 4 p.m. in back of the AS Bookstore in preparation for Tuesday night's Leg Council meeting.

Welcome...

A cordial welcome to every single student in our latest record-breaking total enrollment. We may have more than the usual chaos at the beginning of this session, but we have chosen to admit every qualified student who is determined to come to Santa Barbara. Because of the greatly increased numbers, I hope that all of you, both newcomers and continuing students, will strive to make this a friendly campus.

Good luck!

Vernon I. Cheadle
Chancellor

and congratulations

Dear Students:

Congratulations on your college choice. There are few institutions that offer academic excellence as well as a beautiful and friendly campus. On behalf of the Associated Students, I invite you to participate fully in the life and tradition of our campus. I sincerely hope that the coming year will be an exciting one for you, and for your Association.

RON COOK

El Gaucho Editorial Page

EDITORIAL

Welcome to the Multiversity

El Gaucho's policy during these nine months will be one of active participation in the discussions that are continual in a dynamic University. We are fortunate at the University of California in having a liberal administration. By liberal, we do not mean one which permits licence, but one that allows free inquiry into the problems which affect University students; one which respects opinion.

The policies of the United States towards South East Asia are important. The faculty of schools across the nation smile when the student lifts his head from his books or out of his glass of beer long enough to glance at the complexities of the world—a world into which the adult American has been pulled somewhat reluctantly.

Because we feel that American foreign policy is important, we will largely forego making too many witty, erudite, or urbane remarks in this challenging area. Instead, we will follow a policy of covering the University's events and reporting in depth the problems that face the faculty and, consequently the students of the University.

We firmly believe that responsible community leadership will prepare the student for shaping the policy of our nation. Student newspapers across the country annually neglect the major purpose of a University—the exchange of ideas.

These four years are not a retreat from the world, but an intensification of it; for within the framework of the University the past, present, and future run together at a speed of thoughts which compress the action of centuries.

College is an experience, as well as an institution. In its confusing and largely misunderstood way, it is also exciting. Most hypertensive situations are. For those who bother, the University is a 60-hour work week. And because of this, mother wonders why her child doesn't write home each week.

By remaining impartial in our news columns, we hope to present both sides of the upcoming political campaign, bond issues, referendums, and campus problems. To this end, we will strive for an editorial policy of persistent inquiry, rather than dogmatic solution-solving.

In this regard, an occasional absolute truth may creep in amongst the more "respected" relative ones, but this can not altogether be avoided.

He knows his job best who deals with its problems from day to day. We do not presume to know more than the administration, we only presume to record and comment on the University policies as they affect the student.

For those students and faculty who are new to the multiversity, we sincerely hope you profit from your study here.

And if you can make the time, contribute your thoughts to ours through a traditionally lively letters-to-the-editor column.

Welcome.

Dave Dawdy,
Editor



El Gaucho

David Dawdy
Editor-in-Chief

Tom Bugin
Assistant Editor

Pete Young
Managing Editor

Jeff Kland
News Editor

Cecilia Finster
Copy Editor

Joe Kovach
Publications Director

Steve Bittenberg
Assistant News Editor

Barbara Crutcher
Assistant Copy Editor

Published three times a week, on Monday, Wednesday and Friday during the school year, except during vacations and exam periods, by the Associated Students, University of California, Santa Barbara. Distributed by the Squires, sophomore men's honorary, Tom Cahill, president. Printed in Goleta by the Campus Press, 82 Aero Camino. Entered as second-class matter on November 10, 1951 at the post office at Goleta, California, under the Act of March 3, 1879.

AFTER DEADLINE

Integration: summer in Mississippi

by MICHAEL IVERSEN
Sports Editor

"If we can show the Southerners that integration has worked without injury to whites, we can make progress in loosing the grip of hate which causes segregation."

These words were spoken by David Gable, a member of the Student Non-Violent Co-ordinating Committee voter-registration team in Mississippi. During this past summer David served in Madison County, Mississippi trying to register people.

Before attacking his work,

Editor's Mail Box

Fear and fear

Editor:

All America is slowly rousing from its political lethargy. Almost daily one is subjected to appeals from left and right, but, thus far, I have been exceedingly disappointed by the quality of the Democratic Party's campaign tactics.

Johnson's campaign managers seem to believe that fear and fear alone should be the basis of the Democratic appeal. They have abandoned reason as an effective basis in favor of irrational emotional stimuli. Witness the morbid TV appeal picturing a little girl happily plucking petals from a flower.

Suddenly this tranquil scene is interrupted by the flash of a bursting A-bomb and the statement something to the effect of "reelect Johnson. Preserve the peace of the world."

Evidently the Democratic Party believes that the only way to win in '64 is to brand Goldwater a warmonger and his supporters dangerous militarists. I don't believe the American people are stupid enough to swallow the emotional appeal of the Democratic Party.

Unless the Democratic Party cleanses itself and bases its appeal for votes upon reason, if indeed, there is any rational reason for voting for Johnson, I think Johnson will be rudely shocked November 3 when the American people repudiate his big lie technique of vilification.

Rick Schwartz

he attended an orientation program in Oxford, Ohio. Here the grim facts of existence in such a situation were given to him. "Some won't come back," was one of the first things told the volunteers.

"My attitude was this," David said, "If I found the group to be a bunch of troublemakers out for kicks, I would leave." Such was not the case.

Everyone seemed to think of nothing except the work. "It was a sense of dedication such as I had never known," said David. A great feeling of kinship also prevailed the relations of the workers.

After living in Mississippi, it became easy to see how such a feeling grew. Perhaps the workers' attitude toward their work can best be expressed as a young Negro, who had been beaten many times while trying to register, said: "Down here lots o' people just disappears—they're here and then they've gone; me, I want to die for some reason, so's people will know why I died."

Segregation split most of Madison County; Mississippi cities completely. The workers lived with those people they worked with. This separation removed any possibility of communication with the white rulers.

As the sheriff told them shortly after three workers were lost in Biloxi, "You young people better watch your step—the way I figger it, a nigger is always a nigger—and if you cause trouble, I wouldn't have any compunction about blasting your head off."

This attitude did not help the voter registration drive. Of 24 people who dared walk to the County Courthouse to try, all failed. It became apparent that this method of helping Negro participation would not work.

Finally, an alternative was found--The Freedom Democratic Party. This party was formed in Mississippi to protest the fact that the Negro was not given equal treatment in elect-

ing delegates to the Democratic Convention.

A person who was treated in this manner simply signed a freedom Democratic registration. He registered himself as a qualified voter of the United States, but one who could not vote in Mississippi. Mr. Gable and his fellow workers became deputy registrars on the job.

This effort saw county conventions held to elect delegates for the Freedom Democratic Party Delegation going to Atlantic City. Climaxing the effort was the seating by the Credentials Committee of two members of that delegation at Atlantic City.

Eight weeks was the total time spent on the project by David. Although much of what he saw was not cheering, he said, "Churches such as the Catholic Church are a liberalizing influence in the South and are helping break down prejudice." By showing spiritual kinship the Church helps create a more loving atmosphere.

Thus, the situation in Mississippi, as David Gable saw it, was the challenge to a race against time; race against the expression in violence of the pent-up feeling of the Negro towards the white men who have oppressed him.

THE TIMBERS

Banquets

Also group theatre party rates for our Fri. & Sat. melodramas. Inquire.

Hwy. 101 & Winchester Canyon, 4 miles NW of UCSB
Phone 8-1111

(U) **TINY'S CAFE** 421 No. Milpas

LO MEJOR EN ANTOJITOS MEXICANOS
¡PRECIOS MODERADOS!

Horas--11:30 a 13:30--17:00 a 20:15
(Cerrado Los Lunes)

REBAJA; 10 cts. al Presentar este Cupón
(Únicamente los Domingos o Martes)

Jo and Art Studley of
CAMPUS FLORIST
6577 Seville Road in Isla Vista

invite you to the grand opening of their new and complete
Floral Shop.

Everyone visiting our shop Thursday, September 17, through
Monday, September 21, will receive a free floral gift.

We will be open 9 a.m. to 6 p.m. on these
special five days.

Coed death due to natural causes

Diane Lee Kirk, a 17-year-old coed from San Mateo, was found dead in Manzanita Hall Sunday morning by the girl who was to have been her roommate.

Helen Ostroski, 17, had just checked in at Manzanita when she discovered the body on a dormitory bed.

An autopsy indicated that the death was due to natural causes.

Campus and law enforcement investigations disclosed no unusual evidence. A small silver pill box containing 20 very small white pills and three larger

white pills found near the body were found to be saccharine and aspirin, according to the coroner's office.

Miss Kirk had arrived on campus Wednesday for Frosh Camp, and had checked in at Manzanita Friday. Saturday night she had attended a sorority rush party, and returned at 11:02 p.m., according to house resident Anita Thomas, who was quoted as saying the girl appeared well at that time.

In San Mateo her father, Navy Comdr. Don Kirk, told the Associated Press that "We are at

a complete loss to understand what might have happened." He said his daughter "never drank, never smoked, and had absolutely no health problem that we know of."

Unidentified persons in San Miguel hall posted typewritten "notices" which alarmed many campus residents by ordering persons who had attended Frosh Camp to report to the Health Center so that tests for meningitis could be carried out. The Health Center has no evidence to support the information contained in the "notice".

Yearbook staff positions open to student members

"Positions on the yearbook staff are available to students," stated Helen Iddings, editor.

Art, layout, photography, typing, copy writing, student and university government, academics, living groups, sports and school activities are the areas in which staff members are most needed. Students choose working hours most convenient to their study loads and are not required to work any

more than they desire to.

Applications for staff positions may be obtained at the LA CUMBRE office, located behind the EL GAUCHO office in the Student Union, or can be picked up and deposited in the Associated Students Office, also in the Student Union.

Applicants are required to attend the yearbook workshop, to be held on Saturday, September 26, at 1 p.m. in 1131, SH.



Advt. of Falstaff Brewing Corp. of San Jose, Calif., in fond dedication to reading enjoyment, woman's home companionship & the making of great beer.

Sigma Pi Actives high in spring GPA report

Grade Point Averages

COMPARATIVE AVERAGES - 1964 (SPRING)

OVERALL AVERAGES	
Overall student average -	
Spring 1964	2.58
Santa Rosa Residence Hall .	2.63
Overall women's average .	2.62
Sorority actives	2.60
Overall residence hall	
average (women)	2.59
Santa Cruz residence hall .	2.57
Overall sorority average .	2.56
Off-campus - Colegio	
residence hall	2.56
Anacapa residence hall .	2.55
Overall residence halls	
average (men & women) .	2.55
Overall men's average .	2.54
Fraternity actives	2.53
Overall residence hall	
average (men)	2.51
San Miguel residence	
hall (men)	2.51
Overall Fraternity	
average	2.50
Off-campus - Tahitian	
residence hall	2.50
Overall Las Casitas resi-	
dence hall (women) . .	2.47
Overall Las Casitas resi-	
dence hall (men)	2.43
Off-campus - Villa del	
Sur residence Hall	2.43
Off-campus - Westgate	
residence hall	2.42
Fraternity pledges	2.42
Off-campus - El Dorado	
residence hall	2.41
Sorority pledges	2.29

COMPARATIVE AVERAGES - SPRING 1964 SORORITY AND RESIDENCE HALLS FOR WOMEN

SORORITY AVERAGES	
Rank Sorority	Average
1. Sigma Kappa	2.65
2. Delta Gamma	2.62
3. Chi Omega	2.61
4. Kappa Alpha Theta	2.60
5. Alpha Phi	2.55
6. Pi Beta Phi	2.54
7. Alpha Delta Pi	2.47
8. Delta Zeta	2.46

ACTIVES	
Rank Sorority	Average
1. Sigma Kappa	2.69
2. Chi Omega	2.65
3. Delta Gamma	2.62
4. Alpha Phi	2.60
4. Kappa Alpha Theta	2.60
4. Pi Beta Phi	2.60
5. Alpha Delta Pi	2.51
6. Delta Zeta	2.55

PLEDGES	
Rank Sorority	Average
1. Delta Gamma	2.61
2. Kappa Alpha Theta	2.54
3. Chi Omega	2.40
4. Sigma Kappa	2.36
5. Alpha Phi	2.29
6. Alpha Delta Pi	2.25
7. Delta Zeta	2.04
8. Pi Beta Phi	1.94

RESIDENCE HALL AVERAGES (WOMEN)	
Rank Hall	Average
1. Oceano (SC)	2.76
2. Coralina (SR)	2.73
3. Tesoro (SR)	2.69
4. Marisco (SR)	2.67
5. Ribera (SR)	2.66
5. Villa Marina (SR)	2.66
6. Sirena (SR)	2.65
7. Consuelo (SC)	2.58
7. Primavera (SC)	2.58
8. Arbolado (SC)	2.56
9. Bahia (SR)	2.55
10. Corriente (SC)	2.54
11. Estrella (SC)	2.51
11. Risueno (SC)	2.51
12. Manzanita (LC)	2.47
13. Enramada (SC)	2.46
14. Neblina (SR)	2.45

FRATERNITY & RESIDENCE HALLS FOR MEN

FRATERNITY AVERAGES	
Rank Fraternity	Average
1. Sigma Pi	2.66
2. Kappa Sigma	2.61
3. Sigma Phi Epsilon	2.57
4. Sigma Alpha Epsilon	2.56
5. Chi Sigma	2.55
6. Lambda Chi Alpha	2.45
7. Delta Tau Delta	2.35
8. Phi Kappa Psi	2.16

ACTIVES	
Rank Fraternity	Average
1. Sigma Pi	3.02
2. Sigma Phi Epsilon	2.66
3. Sigma Alpha Epsilon	2.57
4. Kappa Sigma	2.54
5. Chi Sigma	2.52
6. Lambda Chi Alpha	2.46
7. Delta Tau Delta	2.29
8. Phi Kappa Psi	2.19

Rank Hall	
1. Sierra (SM)	2.78
2. Apache (A)	2.72
3. Pima (A)	2.71
4. Mariposa (SM)	2.62
4. Napa (SM)	2.62
4. Maricopa (A)	2.62
4. Solano (SM)	2.62
5. Navajo (A)	2.56
5. Merced (SM)	2.56
6. Acacia (LC)	2.54
7. Stanislaus (SM)	2.53
8. Colusa (SM)	2.52
9. Madera (SM)	2.51
9. Shasta (SM)	2.51
10. Ute (A)	2.50

PLEDGES	
Rank Fraternity	Average
1. Kappa Sigma	2.94
2. Chi Sigma	2.67
3. Sigma Alpha Epsilon	2.52
4. Delta Tau Delta	2.46
5. Lambda Chi Alpha	2.37
6. Sigma Phi Epsilon	2.20
7. Sigma Pi	2.09
8. Phi Kappa Psi	2.04

Rank Hall	
10. Willow (LC)	2.50
10. Plumas (SM)	2.50
11. Mendocino (SM)	2.49
12. Humboldt (SM)	2.48
13. Yuma (A)	2.47
14. Canalino (A)	2.46
15. Toyon (LC)	2.45
16. Sycamore (LC)	2.44
17. Yucca (LC)	2.43
18. Lassen (SM)	2.39
19. Eldorado (SM)	2.35
19. Tuolumne (SM)	2.35
20. Modoc (A)	2.31
21. Calaveras (SM)	2.30
22. Birch (LC)	2.23

Policy holders to gain benefits

Students can now get added insurance benefits under the Associated Students Insurance Plan, with no increase in the \$13 per year rate.

Besides the coverage for accident and illness protection for hospitalization, surgery, ambulance and general medical care which extends to September of 1965 including vacations, the plan will include the total cost of a threebed room instead of the previous \$25 limit.

Up to \$2,500 has been paid to several students in the past. This is the maximum amount of coverage. This plan supplements the Student Health Service, which gives attention to students if they are physically able to get there. Students are covered by the policy no matter where the accident or illness occurs.

Students may buy these policies in the Associated Students Business Office until Oct. 19. Policies may also be purchased at the beginning of the spring semester.

Meet . . .



BETH GOODFRIEND
The Lou Rose Annex
Campus Representative

LOU ROSE
annex



the
new

we're ready for college . . . are you? the l.r. annex is absolutely crammed with the most exciting collections of campus clothes ever . . . chosen for the individual (not the collective) you! there's something for every fashion personality . . . timely tweeds, selective new separates, offbeat sweaters, perennial classics, and all the fun news from the chelsea look to the swinging black disc crepes . . . if it's proper, correct and really zings, you'll find it right here . . . shown: (a) V-neck shaker knit wool sweater with two-color stripes, **14.00**, and wool flannel culottes, **12.00** . . . (b) wool knit combine; a striped blazer, sleeveless top and slim skirt, **36.00** . . . (c) braid trimmed wool knit skimmer, **23.00** . . . (d) reversible car coat with snug fitting hood; curly acetate pile backed by melton, **36.00** . . . (e) herringbone checked wool pauncho, **23.00**, over checked wool stretch pants, **16.00** . . . (f) corduroy blazer, **14.00** and matching corduroy wrap skirt, **13.00** . . . (g) handknit fisherman sweater from italy, **16.00**, over a knee-skimming wool skirt, **15.00** . . . polka dot stretch sox, **2.00** . . . and a seton leather shoulder bag with eagle emblem, **9.00** . . . variously in sizes 5 to 15 and 6 to 16

* plus 10% fed. excise tax

GREEKS!

Did you know
CAMPUS FLORIST
has monogrammed
Greek glassware
designed especially for you?

Kerr directive signed by majority of Greeks

September 1st was President Clark Kerr's deadline for having all UC Greek organizations sign a statement of non-discrimination or lose their "special relationship" to the university. One hundred and thirty-seven out of 151 complied with the Regents' policy by the deadline.

One of the organizations unable to sign at the present time was the Pi Beta Phi sorority of UCSB. All other Santa Barbara campus fraternities and sororities signed the non-discrimination pledge.

Although the local Pi Phi chapter voted last week to follow their national's stand against signing the pledge rather than chance the loss of their charter, local alums had already left them little choice. Last August the Santa Barbara House Corporation, an alumni-run body connected with the national sorority, filed suit against the university in hope of postponing the Sept. 1 deadline.

The House Corporation which owns the Pi Phi house and property in Isla Vista, and co-plaintiff Acacia fraternity of Berkeley, sought to restrain the University from enforcing its policy until their case was settled by the courts. However, their request for injunction was denied by an Inglewood superior court.

In Berkeley, the Pi Phi's signed the pledge and were placed on probation by the national for three months. At the end of that period the national officers will vote on the future status of the chapter.

Privileges lost by the Greek organizations who relinquished

their university affiliation include use of university facilities, use of the university name in describing themselves, their status as university-approved housing, and various forms of rush assistance.

Delta Zeta sorority, which signed just before the deadline, and Sigma Kappa sorority, which signed soon after the deadline, were erroneously reported to have lost their university affiliation. Both accompanied their pledges with letters of protest to university officials.

President Kerr has expressed appreciation for the overwhelming support of the non-discrimination policy by students, nearly all student organizations, faculty, alumni, and the general public. He has also emphasized that the university highly values the fraternal organizations.

"They have contributed much to the lives of their individual members as well as to the university community," he said. "We are pleased that so many chapters have complied with this policy on non-discrimination."

The pledge will be re-signed in March.

GaUCHO Calendar

THURSDAY, SEPT. 17

- 8:30 - 12 noon - Subject A results . . . Robertson Gym
- 9:00 - 12 noon - Foreign language examination results . . . Robertson Gym
- 1:30 p.m. - "Big C" Liming . . . Location to be announced
- 7:15 p.m. - AS assembly for all new students. Robertson Gym
- 8 - 12 p.m. - Frosh-Soph Dance . . . Location to be announced

FRIDAY, SEPT. 18

- 8:00 - 11:45 a.m., 1 - 4 p.m. Open registration . . . Robertson Gym
- 3:30 p.m. - Frosh Tribunal . . . Location to be announced

SATURDAY, SEPT. 19

- 1 - 5 p.m. - Recreation (Gym open for badminton, volleyball, shuffleboard, table tennis, basketball, gymnastics) . . . Robertson Gym
- 8:30 - 12 p.m. - AS welcome dance . . . Location to be announced



CAMPUS FLORIST

in Isla Vista!
Visit today and receive your free flower
Everyone welcomed!
Open till 6 p.m.

New calendars sold in bookstore

"Remaining copies of the EL GAUCHO ACTIVITIES CALENDAR will be sold only in the Student Bookstore," stated Harry Sims, senior editor.

Over 2,300 have been sold to date by a sophomore committee headed by John Turcato and Bill Pascoe, class prexy. Sorority pledges have assisted in the sales during Frosh Camp and Orientation this week.

Editor Sims, with the assistance from numerous students, initiated the photo-activity calendar in June as a service project to improve the Associated Students photography department.

Sold for .75 cents, the calendar includes photographs of 12 UCSB coeds and activities scheduled through the ACB.

Meeting set for writers

EL GAUCHO writers would rather fight than switch, mainly because there is no other paper on campus to switch to.

Fascinated by the gutty and ennobling experience of newspaper writing, most last-semester paper peope are expected to return, according to Editor Dave Dawdy.

Signups for EL GAUCHO are currently being held in the newspaper office in the Student Union.

A meeting for all old and new staffers is scheduled for Monday at 4 p.m. in the EL GAUCHO office.

1309 STATE STREET
Phone 5-6565



YOU

on-campus '64

New Religious Studies Department established

President Clark Kerr and Chancellor Vernon I. Cheadle have announced that the establishment of a Department of Religious Studies at Santa Barbara has been approved by the Regents.

This will be the first such department in this field of academic study offered in the University of California system, Chancellor Cheadle stated.

"It is with considerable satisfaction that the Santa Barbara campus will inaugurate a regular academic Department of Religious Studies. The study of religion and its relationship to the civilization of which it is a part is a vital ingredient of a liberal education," he said.

A curriculum for the scholarly and non-sectarian study of Western and comparative religious systems was first established at UCSB nearly 10 years

ago. In 1962 the Academic Senate approved a curriculum in this field as an academic major within the College of Letters and Science.

The general program has been under the leadership of Dr. D. Mackenzie Brown, chairman of the faculty committee in charge of the religious studies program.

The program offers three lower division courses and nine upper division courses within the major, in addition to a number of related courses including those in anthropology, English, music, and philosophy.

Dr. Brown explained that these courses present the results of scholarly work on the phenomena, history, institutions, forms, and beliefs of the various religions, past and present.

Honorary LL.D. conferred on Cheadle

"You must become the bulwark of our intellectual freedom . . . and remain constantly on guard against unwarranted erosion of our personal freedom in the name of oneism or another, whether couched in the language of the left or the right or the center," Chancellor Vernon I. Cheadle of UCSB told graduates of Miami University of Ohio at Commencement exercises in Oxford.

Dr. Cheadle, a Miami alumnus, delivered the annual summer Commencement address and was awarded an honorary Doctor of Laws degree by the midwestern institution.

Discussing what he called the "struggle for balance between individual freedom and the security of our nation," Chancellor Cheadle said that "we should be willing to let our ideas be tested in debate against any other ideas. If we are certain of the soundness of our own, and if we have any faith in the American people, our ideas should emerge from these

debates as the sound ones."

The Commencement speaker also stressed the importance of conserving the "integrity of the undergraduate curriculum in our colleges and universities." He said that it is "on the undergraduate level that we imbue students with the fullness of their intellectual and cultural heritage, where we stimulate them to become critically aware of the social and moral values that they themselves must maintain later and sharpen and propagate."

Wherever possible, Dr. Cheadle said, "let us lend every support to a continuing dialogue among the teachers who make undergraduate programs vital experiences for young people."

"We must give all our undergraduates a sense of being able to cope not only with themselves but with conglomerations of interesting and fascinating complicated societies, close around them and in all parts of the world."

The Santa Barbara chief campus officer returned to Santa

Barbara after a three-week vacation in Scotland, his stop in Oxford, and a professional botanical meeting in Boulder, Colorado.

Faculty on the move

Dr. William Ebenstein, professor of political science, gave several lectures on Fascist and Communist forms of government this summer in eastern United States.

Solid state electronic devices is the specialty of Dr. Stephen Angello, Professor of Electrical Engineering and recently appointed faculty member.

Chancellor Vernon Cheadle recently announced the appointment of Dr. David Epperson as assistant dean of the School of Education.

Before coming to Santa Barbara, Dr. Epperson taught at Macdonald College of McGill University in Quebec.

Dr. Harold W. Lewis has been appointed professor of physics. Dr. Lewis previously taught at Berkeley and worked on research projects at Princeton and the Bell Telephone Laboratories.

Dr. Otto Witzell, associated with Purdue University for 18 years, has been appointed chairman of the Mechanical Engineering Department.

Six members have been added to the Biological Sciences Department. Dr. William Nell Holmes, a specialist in comparative endocrinology from the University of British Columbia, professor of zoology. Dr. Dale M. Smith, associate professor of botany, has taught at the Universities of Illinois, Kentucky, and Arizona, and Purdue University.

Dr. Ian Kenneth Ross, from Yale University, will be an assistant professor of botany.

New lecturers will be Richard Turner Holmes, past associate in zoology at Berkeley, and Arent Henry Schuyler, Jr., who will also continue in his capacity as chairman of the science department at Laguna Blanca School.

Large circulation off press today

Circulation of today's 24-page EL GAUCHO reached an all-time high of 6,500. Normal distribution by the Squires Service organization is tentatively to be 5,500 this year.

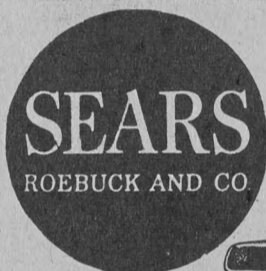
There are five campus locations of EL GAUCHO boxes, where students may obtain their newspaper: the two dining commons, the Student Union, the library-education area, and the newest installation between South Hall and the library. On Mondays, Wednesdays and Fridays by 8 a.m., members of the Squires distribute the usually 8-page offset printed newspaper.

Heavy advertising lineage for the second consecutive year by local and national advertisers has resulted in the extra-large initial issue. A skeleton crew of EL GAUCHO staffers produced the newspaper in 3 days.

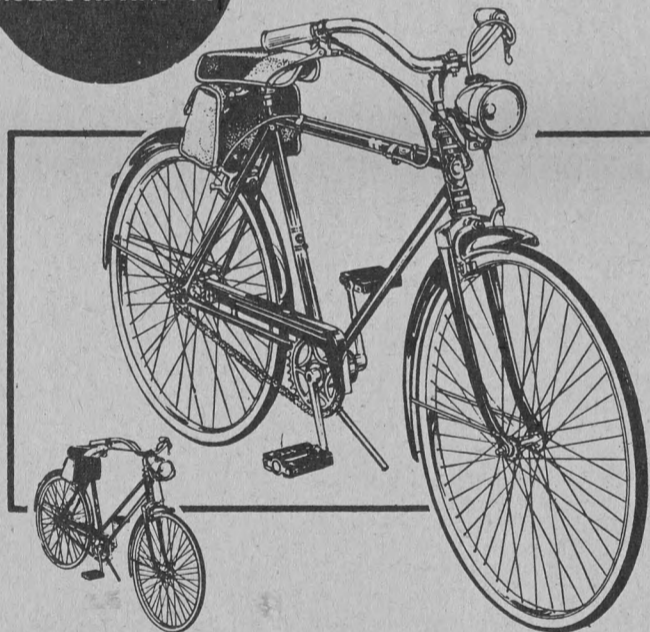
DID YOU KNOW . . .
CAMPUS FLORIST
has
"KEEP IN TOUCH"
GREETING CARDS
designed with the students'
sentiments in mind?

SEARS — SANTA BARBARA

You Can Count on Us . . . Quality Costs No More at Sears



YOUR CHOICE

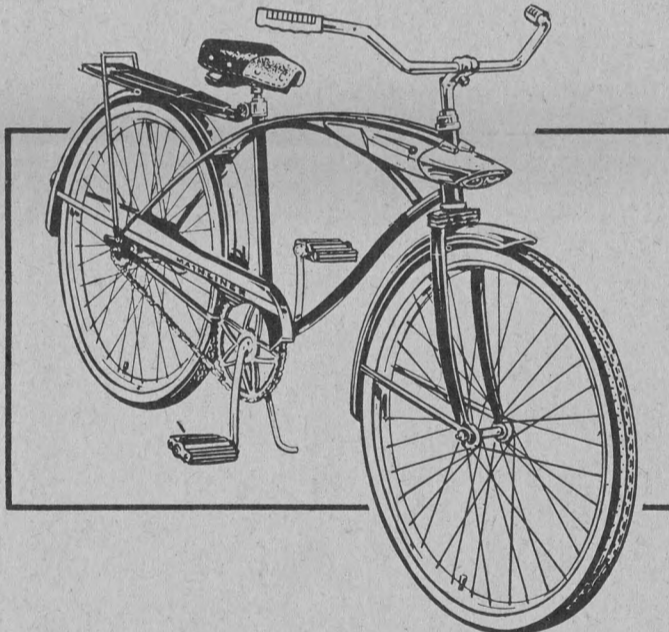


Economical Lightweight Bikes for Cycling Fun

Check Sears low price Boys', girls' models

39⁸⁸

Reg. \$46.88
3-speed gear with twist grip shift for convenience in starting, touring, hill climbing. Dual hand-brakes assure you smoother, safer 2-wheel stops. Tourist bag, spotlight. Boys' red, girls' blue.



Mainliner Bikes with Built-In Equipment

Check Sears low price Boy's or Girl's model

39⁸⁸

Reg. \$52.98
Automotive-inspired bike has dual headlights, rich chrome-plated trim. Sure-stopping coaster brakes, whitewall tires. Streamlined rear luggage carrier. In red or turquoise, white trim.

BIKE ACCESSORY VALUES

	Reg. Price	Sale Price
COMBINATION HORN AND LIGHTS	\$2.69	\$2.29
COMBINATION BIKE LOCK		.77
BIKE BELL	.69	.54
SADDLE BASKET	3.89	3.44

No Money Down
Up to 36 Months
to Pay on SEARS
Easy Payment
Plan

SEARS

Santa Barbara

1221 STATE ST.

Ph. WO 2-9165

Satisfaction Guaranteed or Your Money Back

STORE HOURS

Mon. thru Sat.
9:30 - 5:30

Friday
9:30 - 9:00

Faculty members in 'Who's Who'

Faculty members representing over a dozen academic areas, the chancellor, three deans, a psychometrist from the counseling center, and two faculty-elect are all listed in the new 1964-65 edition of "Who's Who in America."

The 2287-page super-volume includes people of distinction from all walks of life. Administrative entries from UCSB include Chancellor Vernon I. Cheadle; Dr. Albert G. Con-

rad, Dean of the School of Engineering; Dr. Donald R. Cressey, Dean of the College of Letters and Science; Dr. Earl L. Griggs, Dean of the Graduate Division, and Chester O. Mathews of the Counseling Center.

Others listed are William Altus, Psychology; Donald Dozer, History; William Ebenstein, Political Science; Katherine Esau, Botany; Russell Fitzgibbon, Political Science;

David Gebhard, Art; Karl Geiringer, Music; Elmer K. Noble, Zoology; Philip K. Ordnung, Engineering; John C. Snidecor, Speech; Pierce W. Selwood, Chemistry; Charles B. Spaulding, Sociology.

Professor Frederick T. Wall, who will join the Department of Chemistry and serve as chairman during the coming academic year and Dr. Elisabeth Schneider, who will serve as a visiting professor of English at UCSB next year, are also listed in the new "Who's Who."

Faculty advances include five to full professorship

Faculty members recently advanced to the rank of full professor include Dr. Erno Daniel, music; Dr. Donald Dozer, history; Dr. Charles Erasmus, anthropology; Dr. C. Warren Hollister, history; and Stefan Krayk, music.

The promotions, together with ten advancements to the tenure rank of associate professor and three changes in status from acting assistant professor to assistant professor, have been announced by Chancellor Vernon Cheadle.

Those appointed to associate professorships include Dr. David Bary, Spanish; Dr. Andrew M. Bruckner, Mathematics; Dr.

David Gebhard, Art; Dr. Jerzy Karcz, Economics; Dr. Philip Laris, Biology; Dr. Charles McClintock, Psychology; Dr. Peter M. Merkl, Political Science; Dr. Glyn Pritchard, Chemistry; and Dr. Donald W. W. Weaver, Geology.

Criteria for academic advancement at the University of California consists of teaching performance, research and other creative work, professional activity, and university and public service. Departmental recommendations for promotions are reviewed by faculty committees and those selected receive the approval of the Chancellor and the President of the University.

Members added

Seven outstanding music students and a member of the Music Department faculty have been awarded membership in the Beta Eta chapter of Pi Kappa Lambda, national music honor society.

Students named to membership were Edmund Kemprud, Roderic Knight, Marjorie Mack, Jameson Marvin, Leonard Norwitz, Margaret Parmenter, and Ellen Schinnerer. Dr. Stefan Krayk, professor of music, was also made a member.

Center requires appointments

Increased enrollment will necessitate the use of the appointment system for visits to the Student Health Center. Only urgent cases should expect to see a physician without previous arrangement, according to Center Director W. T. Robbins.

The Center will remain open during the noon hour on regular school days beginning Sept. 21.

Quarters slated

Tentative plans for year-round operations have been formulated by Dr. Charles B. Spaulding, a special assistant to the Chancellor at the University of California.

Present plans call for Santa Barbara to change to the quarter system in 1967 or 1968 when enrollment reaches 10,000.

Study aid class scheduled

A Reading and Study Improvement course through the University of California Extension is offered this semester.

Four classes in the basic course are scheduled. All sections will be held in North Hall, evenings from 7 to 8 p.m., beginning September 21.

Section 80, under the instruction of Dr. Chester O. Mathews, will meet on Mondays, in Room 2215; Section 81, under the in-

struction of Dr. Robert E. Blakemore, will meet on Tuesdays, in Room 2205; Section 82, under the instruction of Dr. Earl D. Sumner, will meet on Wednesdays, in Room 2215; Section 83, under the instruction of Dr. Sumner, will meet on Thursdays, in Room 2209.

The advanced section 84, under the instruction of Mr. Vernon R. Persell, will meet on Thursdays, in Room 2216.

The course is designed to improve the reading rate, comprehension, and vocabulary of students, as well as to provide library skills, orientation to college work, and instruction in note taking and preparation for examinations.

Free blotters

Free desk blotters, courtesy of Goleta-Isia Vista merchants, are now available in the Student Bookstore.

Printed on seven different color stocks of paper, the 19"x 25" blotters include material on fall activities on one side and second-semester events on the other.

DID YOU KNOW . . .

Your credit is good at
CAMPUS FLORIST
6577 Seville Rd.
Open a student account

GASOLINE DISCOUNT

AT

Davis & Trenwith

CHEVRON



Goleta's New Chevron Station

5496 HOLLISTER AVE.

At Ward Memorial Boulevard

Atlas Tires - Batteries and Accessories

Standard Oil Products

Complete Car Care Service

For Free Pick-up and Delivery

Ph. 7-7793

THIS DISCOUNT IS EXTENDED TO THE STUDENT BODY, FACULTY AND STAFF OF UCSB

BOB DAVIS AND BRIAN TRENWITH



WELCOME TO THE LAND OF PLENTY

Guess what foreign visitors want to see in America. Our tall buildings, pretty women—and a grocery store.

They're always amazed at the variety and abundance. At the free choice of foods from all over the country and world. And from all seasons. At the high quality, freshness and exciting convenience built into so many products. At the stores themselves. The sheer fun of shopping in such sparkling clean, beautifully lighted and laid-out food centers. They see the American grocery as the instant "Land of Plenty."

They'd be even more amazed if they saw the efficiency behind all this. For we Americans spend a smaller share of our income than ever (and about half what a Frenchman has to spend!) for food.



FOOD IS A BARGAIN

JORDANOS

— Modern Supermarkets —

5 Points Shopping Center--6 Other Locations

Sunday films set for 14 weeks

"The Rest is Silence," a German film being shown in Santa Barbara for the first time, will initiate UCSB's Fall Film Series next Sunday.

The series, comprising 14 programs of film classics from the U.S. and four foreign countries, is presented by the Committee on Arts and Lectures. Films are shown every Sunday in Campbell Hall at 6 p.m. and 8 p.m., with the exception of the Oct. 11 and Dec. 6 showings.

A 1959 production, next Sunday's film stars Hardy Krueger in the role of a modern Hamlet. Helmut Kautner directed the picture which has been called "the most exciting German film of recent years."

Tickets on sale for 5 concerts

Season tickets for the Committee on Arts and Lectures Concert Series are being sold at the Campbell Hall box office from noon to 4 p.m. daily.

Students and faculty and staff members may purchase tickets for \$5. The price of tickets for the general public is \$6.50.

Events in the series include The New York Woodwind Quintet; Julian Bream, guitarist; Jerome Lowenthal, pianist; and two folk operas presented by the Opera Workshop.

'Gypsy' on stage

Tickets to "Gypsy," starring Gisele Mackenzie, at the Valley Music Theatre in San Fernando Valley may be purchased in the Recreation Office.

"Gypsy" will be performed Sunday at 3 p.m. Students will leave the Recreation Office at 1 p.m. Tickets are \$4.75 including transportation. The Recreation Office is located in the Old Gym.

Following the initial program, the UCSB series will include "Variety Lights," an Italian film, on Sept. 27; "My Life to Live," from France, on Oct. 4; "The Kid Brother," a U.S. classic starring Harold Lloyd, on Oct. 11; "The Lovers," from France, on Oct. 18; and "The Maltese Falcon," a U.S. production, on Oct. 25.

In November, the series will include "Wild Strawberries," a Swedish film, on Nov. 1; "A Girl in the Mist," Japanese, and "Rocket Ship," U.S., on Nov. 8; "The Exiles," a U.S. film, Nov. 15; and "A Touch of Evil," also from this country, on Nov. 22.

I LIVE IN FEAR

"I Live in Fear," from Japan, will be shown on Dec. 6, followed by "Paris 1900" and "Night and Fog," both from France, on Dec. 13, "Los Olvidados" from Mexico, and "On the Town," from the U.S., are scheduled for Jan. 3 and 10, respectively.

The series, designed to supplement local offerings, provides a comprehensive introduction to the art of film-making. Selections represent a broad range of styles and subject matter.

English subtitles are provided for films in foreign languages.



SI ZENTNER and his 16-piece orchestra will provide live entertainment at the first big band dance of the school year, Friday, Sept. 25, at 9:30 p.m. in Robertson Gym. Proceeds from the function, being sponsored jointly by the Sophomore Class and AS Social Committee, will go into the UCSB Scholarship Fund.

Do you know . . .
You can order
Specialty CAKES at
CAMPUS FLORIST
in Isla Vista?

El Gaucho Entertainment Page

Cast, crew tryouts set

Tryouts for two plays, "The Firebugs" and "Blood Wedding," will be held in the new Speech and Drama Building next week.

Dr. Theodore Hatlen, Chairman of the Dramatic Art Department, will be directing "The Firebugs," and guest director Rod Alexander will do "Blood Wedding." Both plays will be presented in the new theater this fall. The spring plays will be "Midsummer Night's Dream" and "You Never Can Tell."

Tryouts are open to all interested students regardless of major. Students interested in serving on the technical crew for lighting, costume, makeup, scenery construction, sound and publicity should sign up at the auditions.

Next week's tryouts are scheduled for Wednesday from 3 to 5 p.m., Thursday from 7 to 10 p.m., and Friday from 3 to 5 p.m.

Juniors slate academy film

The academy award-winning movie "A Raisin in the Sun" with Sidney Portier and a short cartoon "Sloppy Jalopy" with Mr. McGoo will be shown by the junior class Monday night, September 21, at 7:30 in Campbell Hall.

Tickets are 50¢ and may be purchased at the Campbell Hall box office.

Concert series tickets on sale

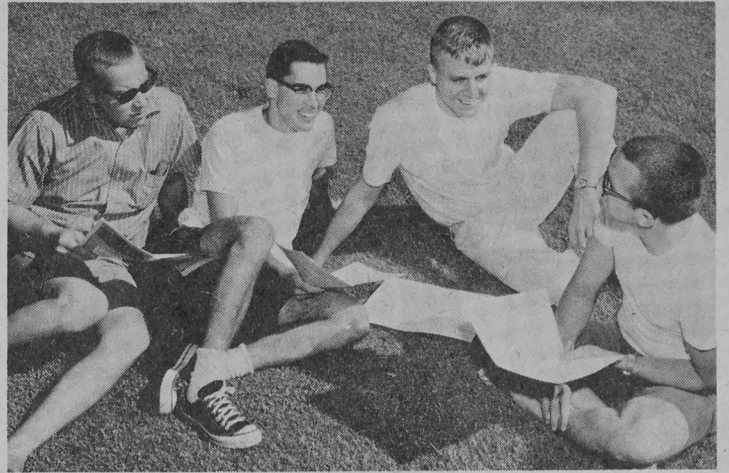
Students and members of the faculty and staff may buy season tickets for the CAL Concert Series in the Campbell Hall box office from noon to 4 p.m. daily.

Tickets for the series, presented by the Committee on Arts and Lectures, are \$5. Ticket holders are entitled to seats in the reserved section. There will be six performances during the year.

Dance planned

A Welcome Dance for all students will be held tomorrow night from 8 p.m. to midnight in Robertson Gym.

The dance is sponsored by the AS Social Committee, headed by John Hambricht. Music will be provided by The Collegiates, a local group. The dance is free to all students.



MEN'S GLEE AT CAMP -- Members of the Men's Glee Club arrived on campus early for a weekend get-together of rehearsals and recreation in preparation for campus and tour recitals. Among the 25 who gathered at Cachuma Church Camp Sept. 11-13 were, from left, Randy Stewart, Ed Kemprud, Roger Olson, and Cecil Feaver. The Glee Club is directed by Carl Zytowski, associate professor of music and acting chairman of the music department.

RIVIERA

NEAR SANTA BARBARA MISSION . . . OPPOSITE EL ENCANTO HOTEL

THEATRE

PHONE WO. 2-3477

Nightly 8:15 p.m. Sunday 7:30 p.m.

A Present Day
Charlie Chaplin....
"ETAIX IS A
DELICIOUS CLOWN!"
--Crist, Tribune

the SUITOR

A WILSHIRE INTERNATIONAL Release
Directed by and starring
PIERRE ETAIX

Special Added Request Feature
"TASTE OF HONEY"

Santa Barbara
METROPOLITAN
THEATRES

Senior Citizens
Sunday thru Thursday
75c at All Theatres

NEW GRANADA

PHONE 5-6541
DAILY FROM 6 PM - SAT. SUN. HOL. 1 PM

Alfred Hitchcock's
"MARNI" and
"McHale's Navy"

AIRPORT DRIVE-IN

Goleta • Opp. S. B. Airport • Ph. 7-1219
OPEN 6:30 - STARTS DUSK

"Robin & the 7 Hoods"
also
Nancy Kwan
in "TAMAHINE"

STATE

962-7324 • MATS DAILY 1 P.M.

"The Night of the
Iguana"
and
"Honeymoon Hotel"

Arlington

DAILY FROM 6 PM PHONE
SAT. SUN. HOL. 1 PM 6-6857

Swinging Surfing Hit--
"FOR THOSE WHO
THINK YOUNG"
and "633 Squadron"

"The Royal Family of the Guitar"

The ROMEROS

"The most extraordinary concert this reviewer has enjoyed in 30 years of his craft." . . . Boston Globe

Dazzling fingerwork . . . Richly colored, haunting sound . . . A range of expression seldom offered by the Guitar . . . brought down the house . . . N.Y. Times

LOBERO THEATRE

Saturday, Sept. 19th, 8:30 p.m.

Tickets at box office

THRU THE MIRACLE OF ELECTRONOVISION

FOR FOUR PERFORMANCES ONLY

An ELECTRONOVISION Production
ALEXANDER H. COHEN. Presents

RICHARD BURTON

in JOHN GIELGUD'S
PRODUCTION OF

HAMLET

with the all-star cast of the hit Broadway play!

Exactly as performed on Broadway . . .
2 Days - 4 Performances only - Sept. 23, 24

WEDNESDAY—THURSDAY

Matinees 2 p.m. - 1.50, tax included
Evenings 8 p.m. - 2.50, tax included

If you want to be part of a historic first . . . Mail your check or money order to the Riviera Theatre. Please state matinee or evening, and what date.

Tickets on Sale
Now at
STATE THEATRE
GRANADA THEATRE
ARLINGTON THEATRE

Only 557 Seats
For Each Performance



FIRST SOME FRIENDLY ADVICE FROM COACH CURTICE . . .

1964 SCHEDULE

OPPONENT	DATE	WE	THEY
San Fernando Valley State	Sept. 19	---	---
Whittier	Sept. 26	---	---
Nevada*	Oct. 3	---	---
UC at Davis	Oct. 10	---	---
Cal State at Long Beach	Oct. 16	---	---
Cal State at San Diego*	Oct. 24	---	---
Santa Clara	Oct. 31	---	---
Cal Western* (Homecoming)	Nov. 7	---	---
UC at Riverside	Nov. 14	---	---
Cal Poly (SLO)*	Nov. 21	---	---
Mexico City	Nov. 28	---	---

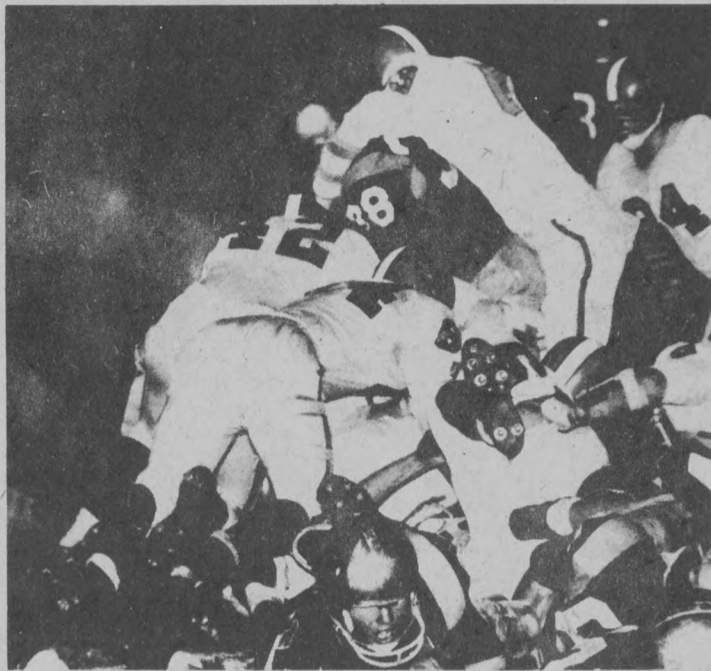
* Denotes a home game-played at La Playa Stadium

Section B

El Gaucho Sports

MIKE IVERSEN
Sports Editor

Putting together Gaucho Football 1964 version



IF YOU MISS AT FIRST



THEN CONSULT THOSE ABOVE



RIEHLMAN AND STAFF ADVISE LINEMEN IN FUNDAMENTALS



DAWSON PRACTICES TO GET READY



AND HOPEFULLY, SUCCESS

Curtice looks at season

For the first and greatest time in Gaucho football history, hope is the overriding feeling among the coaching staff. Fifty-six gridders have come along amazingly fast in two weeks prior to the first game.

Among these are an outstanding group of JC gridders. They cover a wide range of positions, and include John Boyle-Pasadena City College, Earl Miller-Coalinga JC, Ron Stoughton-Fullerton JC, Gene Stucky-Sacramento State, Norm Stanley-Bakersfield JC plus four years of Air Force football, Jim Wankum-Hancock College, Bob Whitworth-Los Angeles Valley JC, and Rick Rosenthal-Oceanside JC.

Rosenthal was injured during the first week of practice. His knee ailment should keep him out for the duration of the season. His speed at the halfback spot will be missed.

Boyle is a 6 foot 4 inch, 211 pound center. Previous to playing at Pasadena City College, he attended the University of Washington. Another line man is Miller, a five foot ten inch guard.

Stoughton also hikes the ball with all 215 pounds of his body. The coaching staff expects Stoughton to bolster the offensive and defensive front walls.

One backfield transfer is Stucky. During spring practice his actions were lauded by the coaches and he continues to do well. Although weighing only 196 pounds his drive gets him the yards to keep a drive going.

Several other large linemen have looked well in Fall practice. Twenty-four year old Stanley boast six years of experience besides contributing 232 pounds to the front wall. His position is tackle.

Weighing only 210 pounds is Jim McMahan--candidate for starting guard position. With service in the Marines and Hancock College, his experience will be valuable.

On the end of the line is Bob Whitworth with two years experience. A lanky 200 pounder, "Bob should offer some help," according to the coaches.

All of these men will challenge 17 returning lettermen and many fine players off the Freshman team. Included in the returnees are Chris Dawson, Doug Bowman, Tony Goehring, Max Hand, Bob Blindbury, Alan Reynolds, Larry Scott, Gerry Congdon, George Kraus, and Dick Kezarian.

Freshmen who battle for top spots also are: Alan La Roche, Preston Hensley, Bill Moffett, Doug Hayes, Bruce Hitchcock, Jim Coward, Bob Basemann, Joe Jahn, Art Mori, and Jim Habib. Their Frosh record was four wins and one loss.

Jahn, Mori, and Habib are backfield men with the rest adding poundage and experience to the line. Habib led all rushers during the 1963 Frosh season, while Mori was top scorer. Jahn has come on well during Spring drills and show possibilities of some action at quarter back.

Quarterback will be vied for by five players. Besides Dawson, and Jahn, lighter Bob Heys will probably see much action.

Wingbacks Hand, Bowman, Mel Sherbourne and Mel Gregory will form targets in the vaunted Curtice passing attack. Halfbacks Blindbury, Ernie Zomalt and ends Scott Williams, Tony Goehring, Jerry Kearns (New Mexico State), and Larry Swarbrick will also keep the defense busy.

With good blocking from a heavier line Larry Scott should increase his yards gained. Last year he was third team on the

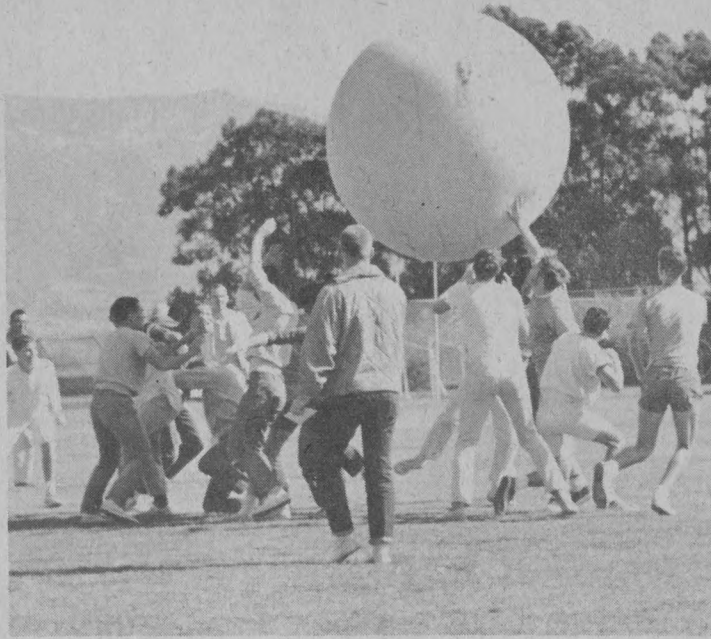
All-Coast choices. Al Reynolds, Jim Orear, Stucky, and Habib will keep the linebackers busy through the middle of the line.

Coach Curtice has been surveying this talent for nearly two weeks and still finds it hard to make a tentative starting lineup. He has been helped in this task by Pete Riehlman (line coach), Harold "Rusty" Fairly (backfield coach), Ray Thornton (ends and wingbacks), Bill Hammer, Brent Carder, Terry Hamerschmidt, Bob Musella, and Bud Goodnight.

All the coaches agreed that the scrimmage held last Saturday was a fine indication of what might happen this season. The blocking was crisp, the passing sharp, and each team scored once a quarter.

Chris Dawson led the passing with several touchdown throws. Joe Jahn also looked on-the-beam and the scrimmage was "the best for that point in practice, ever," according to Coach Curtice.

UCSB's opponent this Saturday is San Fernando Valley State. This is the first of eleven games during the season.



Intramural action set

Fall intramurals will begin within two weeks, and all living groups are urged to elect house sports managers soon. During the coming semester such competition as flag football, wrestling, tennis, and basketball will be some of the activities played during the intramural season.

Anyone having any questions concerning the schedules, deadline dates and standings in Intramural competition can obtain these through the Intramural

office in building 421, room 209. Mr. Bill Hammer serves as faculty advisor for this activity.

Help wanted!

All girls desiring to meet people, and learn a trade are encouraged to apply as sports secretaries at the "El Gaucho" office. Such young women are needed in this vital communications field to insure that the students of UCSB are kept fully aware of the progress of the athletic teams of this institution.

By doing such tasks as typing, and copy reading, the young woman so working may earn a small remuneration---(some of the good coins) and much gratitude.

"The way to a man's heart is through his sports page"----- girls, we need you.



STUDENT
CORSAGES
OUR
SPECIALITY

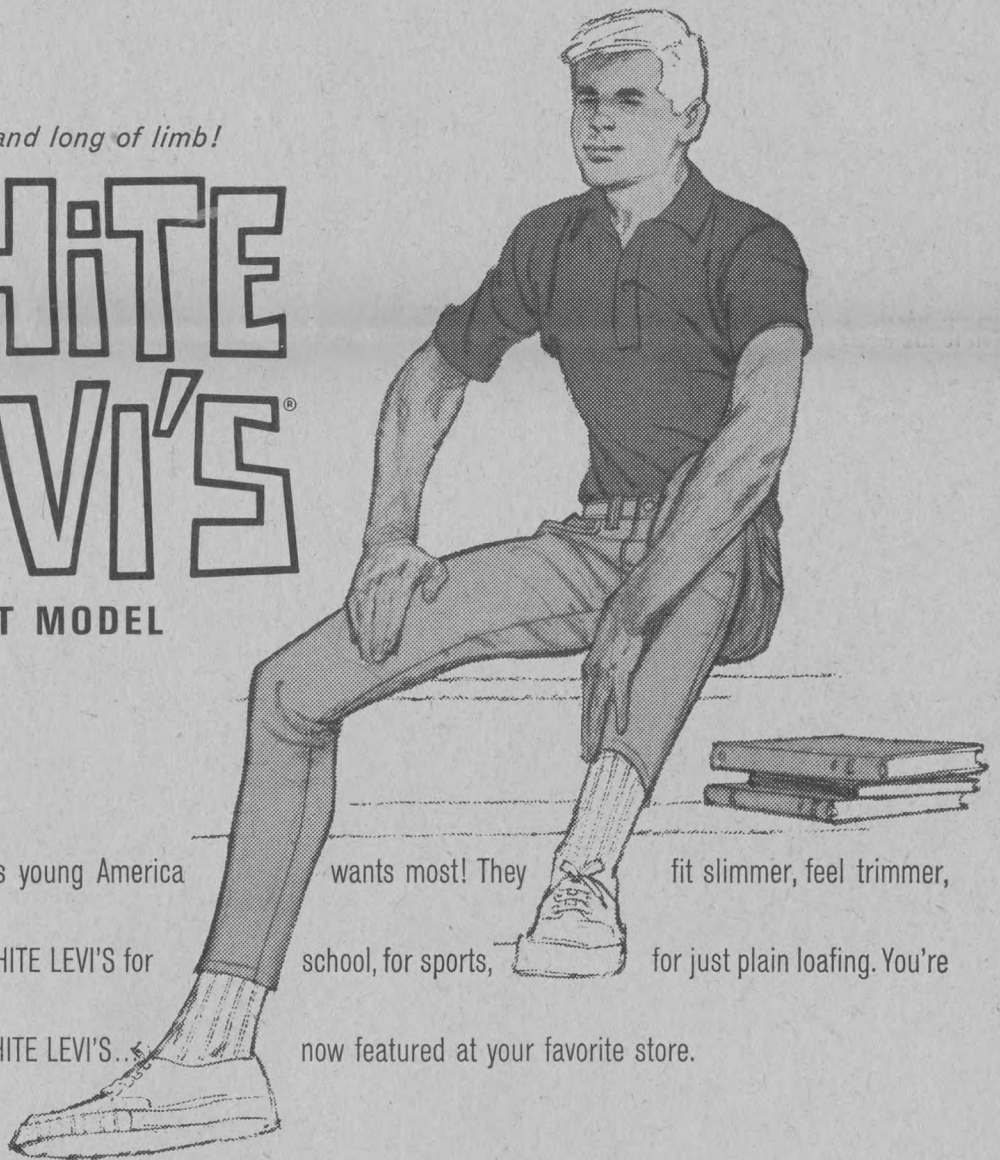
*San Roque
Flower Shop*

3008-A STATE STREET
Phone 6-0874

Slim, trim and long of limb!

WHITE LEVI'S®

SLIM FIT MODEL



These are the pants young America wants most! They fit slimmer, feel trimmer, look neater. Wear WHITE LEVI'S for school, for sports, for just plain loafing. You're always in style in WHITE LEVI'S... now featured at your favorite store.

® THE NAME LEVI'S IS REGISTERED IN THE U. S. PATENT OFFICE AND DENOTES GARMENTS MADE ONLY BY LEVI STRAUSS & CO., 98 BATTERY ST., SAN FRANCISCO, CA.

VILLAGE GREEN
MEN'S WEAR
966 Embarcadero del Mar
Ph. 3611

**El Patio
Men's Wear**
619 State St. Ph. 2-7424
Open 9-6 weekdays,
till 9 p.m. Fri.

JEDLICKA'S
2605 De la Vina--6-9157
The Authentic Western Store
Park in Back Free
Green Stamps; BankAmericard
— Since 1932 —

Southwick's
Men's & Boys' Wear
601-603 State St.
Ph. 966-6735

BILL TOMLIN
MEN'S SHOP
6551 Trigo Rd.--8-4810
5850 Hollister--7-4801

**Western
Clothes Shop**
620 State -- 6-7402

GET LEVI SLIMFITS AT

Alley appointed physician for UCSB athletic teams

by MIKE IVERSEN
Sports Editor

"Our most important job is to keep our athletes uninjured," stated Dr. Richard Alley, new Gaucho team physician. Just hired in July Dr. Alley has served for five years as physician for many sports teams.

Before coming to UCSB Dr. Alley served as team physician for a Tech College in California. During this time he has carried out much research into the reasons for injuries to football players. Most recent of the studies was in 1961 when he studied the injuries caused to the neck by the new head protection on helmets. Of special concern was the effect of pulling the mouth protector back.

Dr. Alley found that although there is danger in the pulling back of the face mask, proper training can reduce injuries caused by it. He hopes to keep such injuries on the Gaucho team to a minimum this season. Already he has had several of the players under his tutelage for injuries.

Fred Smith from Orange Coast Junior College runs two miles per day during the two-a-day drills carried out at the beginning of the season. This was to help strengthen his back muscles. "We hope to get the players back into action as soon as possible with as much confidence as possible," Dr. Alley said.

In learning his trade, Dr. Alley learned his job first at Galaudette College in Washington. This was followed by work in Pasadena for his internship. All of this led to his choice as team physician at the 1961 Helsinki Ninth International Games for the Western team.

Dr. Alley feels that he is part of a team in his job as team physician. Along with the coaches, trainers, and equipment men, he helps to guard the players against unnecessary risk and injury. "The cooperation of all these people is extremely important to the fortunes of a team," maintains Dr. Alley.

The equipment men should tape each player before every practice. They must properly fit every player in his knee

pads, helmets, and shoulder pads.

"An improperly fitted helmet can be extremely dangerous," said Dr. Alley. If it is too tight fitting, direct blows on the head can cause serious injury such as concussions, according to Dr. Alley. An improperly fitted knee pad can act as a wedge on the player's knee if not fitted closely.

The trainer can help the physician carry out his therapy in the fastest possible time. In this way, the team can take care of its injured without sending them to a medical clinic.

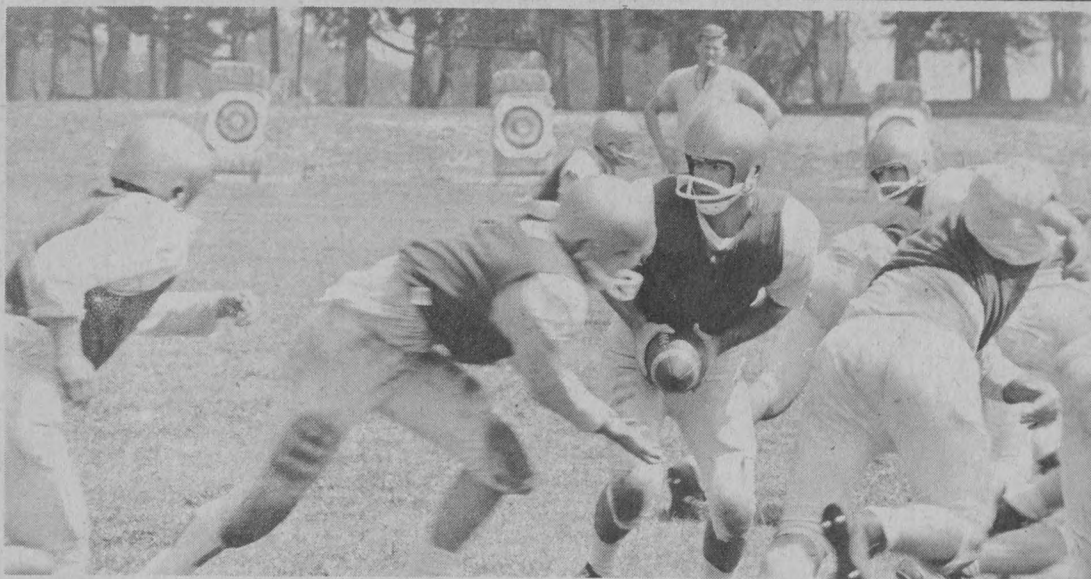
To date, all these facets have worked together well. Only Rick Rosenthal's injury has been of a serious nature. "The team is in great shape for this early in the season," stated Dr. Alley.

"They came to us in good shape, and they have come along fast in drills. The scrimmage held on September fifth, was the earliest such scrimmage in Gaucho history.

All Dr. Alley's time will not be spent working on the football's teams injuries. As school gets under way, he will work in the health center for seven hours each day. At 4:30 he will come out to the football field to help supervise the practices.

"This should be enough time for me to carry out my job," stated Dr. Alley. When funds are available, I will travel with the team," he said. This should be extremely important since there are seven away contests and only four home battles.

"The sooner the player can be put under our treatment, the sooner we should have him back on the field," Dr. Alley continued. Although the Gauchos have some depth, "it certainly will be good to see the addition of a team physician on these trips to help keep the chance for injury down," affirmed the coaching staff.



1963 FROSH WORKOUT

Gorrie finds wealth of Frosh talent

September 21 will see the start of Freshman football practice. Head Frosh Football Coach Dave Gorrie expects over 30 players of top-notch calibre to turn out. Many conference All-Stars and first-team picks

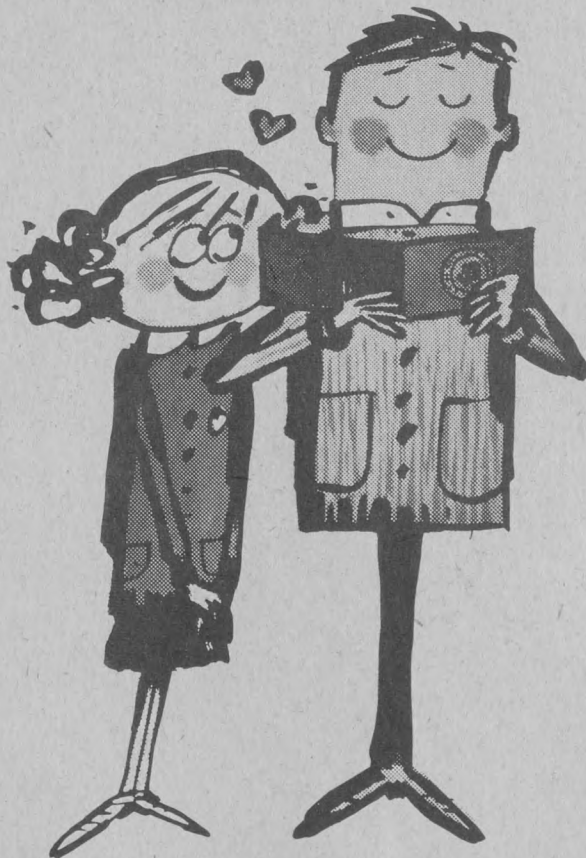
are expected to be among those turning out. Gorrie will take his team toward a six game schedule with four home encounters and hope to match the fine 4-1 record of last year's Frosh team.

Come in and take a
DEEP BREATH ...
We smell good!!!

CAMPUS FLORIST

Isla Vista

Like
to
see
your
name
in
print?



Open a Bank of America checking account—and all your checks will be imprinted with your name and address. A Bank of America checking account means top protection for your money. Your cancelled check is your receipt for a paid bill. Also available is our economical Tenplan checking account where you pay only for the checks you write. There's no other charge. Open your account today.

BANK OF AMERICA

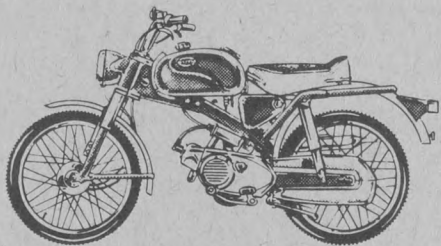
NATIONAL TRUST AND SAVINGS ASSOCIATION • MEMBER FEDERAL DEPOSIT INSURANCE CORPORATION

ISLA VISTA BRANCH • 976 EMBARCADERO DEL MAR, GOLETA

SEARS . . . SANTA BARBARA



Save \$25
ON
The ALLSTATE
"Sports 60"



4.5 HP—Up to 107 Miles per Gallon

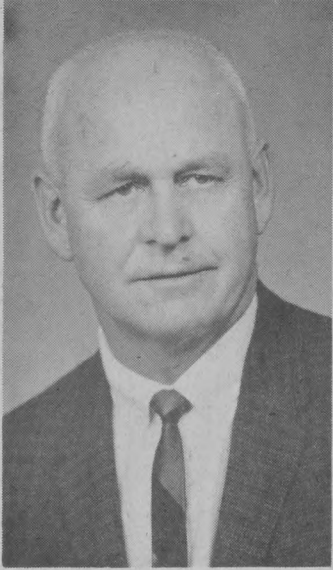
3-speed foot shift, solo race saddle and sport-tread tires; speeds up to 46 M.P.H. Finned drums, scramble-type handle bars; race-type axles. Bright Coral Red and Cream finish. Reg. \$299.95

\$274.95

SEARS

1221 State, Santa Barbara
Phone: STORE HOURS
WO2-9165 Mon.-Sat. 9:30-5:30
Friday 9:30-9:00

YEAR PROMISES MANY



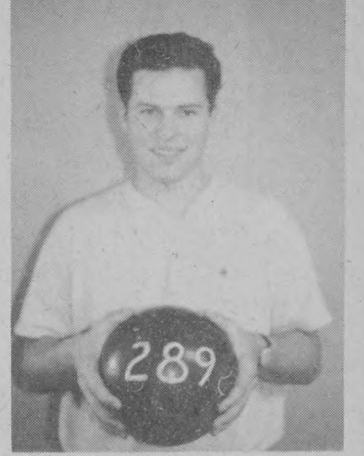
Williamson heads sports

Dr. Stanley Williamson is the overseer of all UCSB Varsity sports activities and other Intercollegiate Commission activities. He is responsible for helping to see that a valuable program of athletics is carried out by the University. One may not hear much about him, due to his executive position, but he is there.

Much of his duties are concerned with the large budget of the Intercollegiate Athletics Office. Each sport submits its estimated expenditures to the Athletic Office. This is then checked and the final OK given for the appropriation of the money.



SWIMMING ABOVE ...CYCLING BELOW



INTRAMURALS

NOW OPEN
BARBER
SHOP
The Old
Plaza Barber Shop

6572 SEVILLE, Isla Vista
420 S. FAIRVIEW, Goleta
Behind Danny's Signal Service

We Specialize in
FLAT TOPS, CREW CUTS, IVY LEAGUES
(All Styles)
A TOUCH OF THE 90's
WITH TODAY'S STYLES

Appointments Available--
Call 8-9175, Isla Vista
7-9074, Goleta

*You are invited
to the grand opening of*

BILL TOMLIN
MEN'S SHOP

AT 6551 TRIGO RD. IN ISLA VISTA

DROP IN TO ENTER THE DRAWING FOR

33 VALUABLE PRIZES

No purchase is necessary. Winners will be announced.

WE'LL GIVE YOU FRIENDLY SERVICE AND TOP MERCHANDISE THAT'LL MAKE YOU WANT TO COME BACK AGAIN

s/Bill Tomlin

TWO CONVENIENT LOCATIONS:

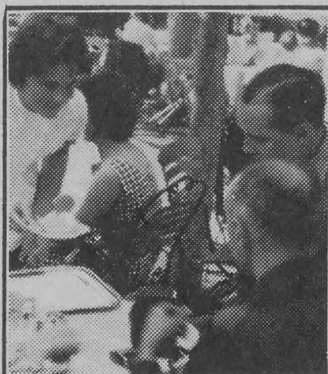
6551 TRIGO RD.
In Isla Vista
8-4810

and

5850 HOLLISTER AVE.
In Goleta
7-4801

KTMS airs Gaucho games

For the third season in a row Santa Barbara radio station KTMS will broadcast all UCSB away games. By setting your radio dial on 1250, such games as this weekend's San Fernando Valley State game, can be listened to while remaining in Santa Barbara.



A U.S. co-ed serves ice cream in Europe

PAYING JOBS IN EUROPE

Grand Duchy of Luxembourg, Sept. 9—Students are urged to apply early for summer jobs in Europe. Thousands of jobs (office, resort, factory, farm, etc.) are available. Wages range to \$400 monthly and the American Student Information Service awards travel grants to registered students. Those interested should send \$2 to Dept. T, ASIS, 22 Ave. de la Liberte, Luxembourg City, Grand Duchy of Luxembourg and request the ASIS 36-page booklet listing and describing every available job, and a travel grant and job application.

WHY WE CARRY GANT

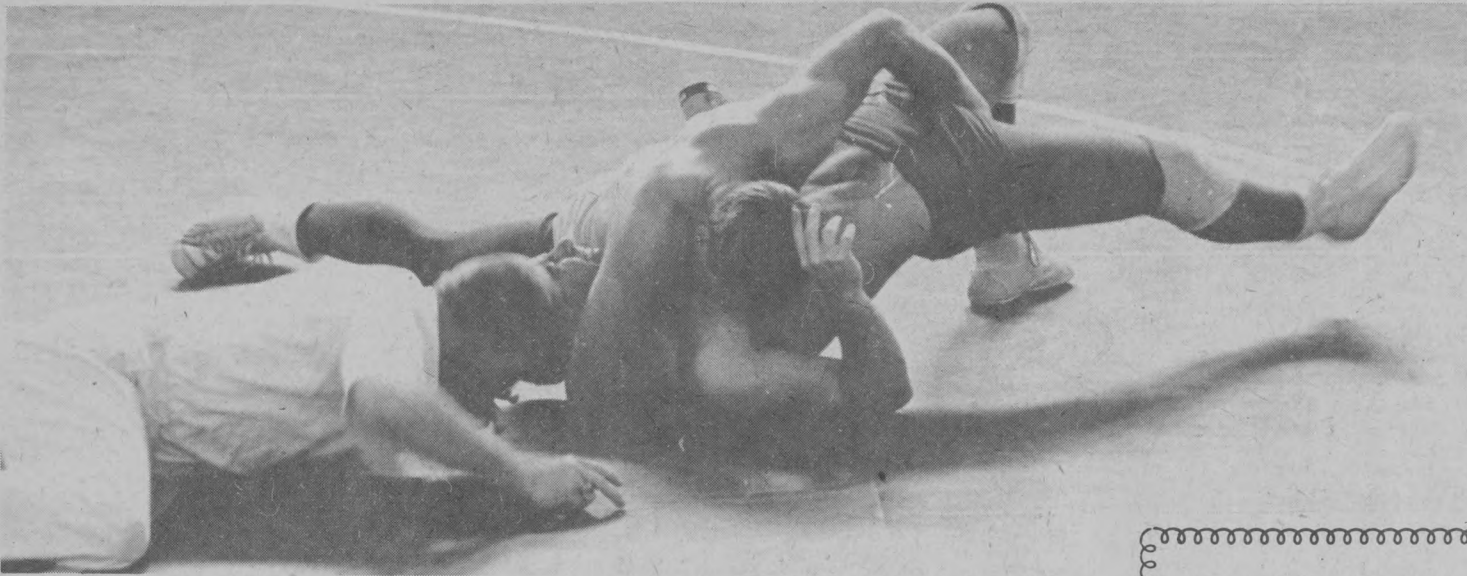
There's more than fabric superiority in Gant. In addition, "needled-into the warp and woof of every Gant shirt" — there's flair-fit show — three vital in-herents that make all the difference when a man wears a Gant.

We chose Gant because they take shirt making seriously. They're hard to please (like we are) when it comes to fit of collar, its roll, its profile—how much it shows above the suit collar. They're fastidious about the way the body of the shirt drapes and folds. All must integrate to achieve that viable ingredient which gives comfort and aplomb. In substance, Gant shirts are keyed to the discerning tastes of well groomed men who appreciate quality. These men are our customers.

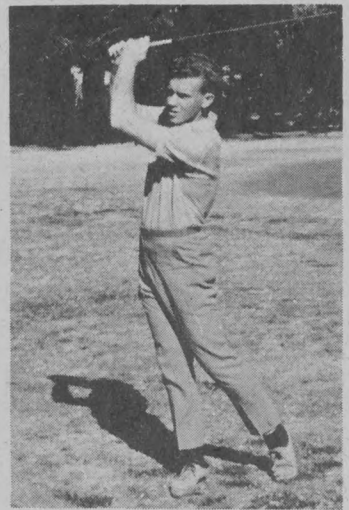


966 EMBARCADERO DEL MAR, ISLA VISTA • PHONE 548 3611
OPEN 9:30 A.M. TO 5:30 P.M., MON.-SAT.

GAUCHO SPORTS THRILLS



WRESTLERS GRAPPLED TO FIRST WINNING SEASON LAST YEAR




SAVE THIS AD
 You May Need It Sometime
BUY -- LOAN -- SELL
 J. J. O'Brien,
 Owner-Appraiser
MIDAS DIAMOND
BROKERS
 5878 Hollister, Goleta



GYMNASTICS

stacked
 with the
 correct clothes
 for
 college...

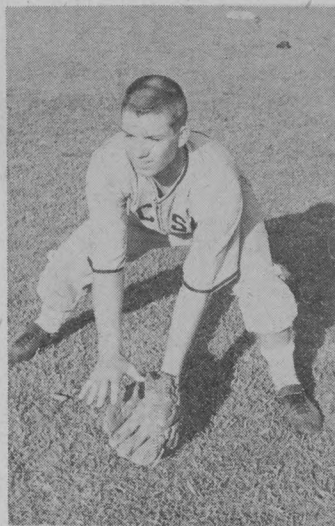
The Big News in Sweaters - Bulky Lambswool & Mohair

From famous Seattle Knitting Mills comes the big news in sweaters. A bulky brushed lambswool and mohair in popular raglan sleeve design with full fashioned construction. Choose six button cardigan or high-v pullover in blue mist, green mist or wheat heather.

CARDIGAN **13.95** (illus.)
 PULLOVER **12.95**

Order by mail or phone MA 9-2221 or ZE 2653

SILVERWOODS
Natural Shoulder Shops
 835 STATE STREET
 "Open Friday Eves. Till 9"



BASEBALL

L.A. TIMES

Early Morning Delivery

(\$2.50 Mo. Daily and Sunday)

Phone 963-2014

Santa Barbara
 21 W. Ortega



WARDROBE FOR GENTLEMEN

738 anacapa, santa barbara
 woodland 5-3031
 drive-in parking on premises

Why play football? The players' view...

Over one-third of the money collected from the student body in their registration fees is used to further the inter-collegiate sports participation of that institution. What do the players on this year's football team feel is the value of the program which this money helps pay for?

To find out, the reporter went out onto the field and interviewed several of them. Their answers are provided here for your perusal. Perhaps they can shed some light on the composition of this year's team.

When asked this question, Chris Dawson, a candidate for the quarterback position, replied, "mainly for the contact." Chris mentioned that he intends to work on his speed in taking the ball from the center and getting back into passing posi-

tion - as his main improvements this year.

Al Reynolds--fullback answered the question as follows: "I like the ideas of the fullback in the offensive pattern. The fullback is called on in the third down and one situation to make the yardage. He also blocks when he is not running, and keeps in the middle of the action during the whole game."

Left tackle Bill Lyon replied that he likes the contact of that position with -- one generally finds the larger men there. He would also like to try his hand at the linebacker position."

Number 75--Norm Stanley feels that the competition of football; offers a real test of one's ability to stand up to tests; to stick with the hard business of winning football. Gene Stucky, like Reynolds

likes the blocking and competition of the fullback position. He has shown this in his fine spring practice showings.

Doug Bowman--number 22 at halfback likes the excitement of open field running. The test of outwitting the opposition in the extremely tense situation is Doug's real thrill in playing football. Punt and kick-off returns are his specialty, and he returned one almost seventy yards for a beautiful touchdown during last season.

Jim Coward feels that football is an enjoyable sport for the good fellowship which it provides. It is a chance to meet men of high calibre, who are also seriously interested in football. Besides this, it helps keep him in very good condition---as the first two weeks of practice have shown.

Number 33--Sophomore Jim Habib, Fullback, likes the rough action of a football game. It might be compared to a legalized brawl. However, the sense of fair play against a good opponent is a real challenge which Jim feels is a good part of the game.

One of the more experienced members of the team--JC transfer Fred Smith had some interesting comments about the merits of playing JC ball.

During his JC career, Fred has played in approximately 20 ball games. One of these was the Junior Rose Bowl Game.

A Junior College career can allow a player to gain a tremendous amount of experience and if he has good coaches, he has a good basis for playing in college.

In general then, the consensus of the players was that football was a very valuable experience.

Bernstein appointed new information man

Don Bernstein was recently added to the Sports Information of the University of California at Santa Barbara to turn out information about UCSB's athletic achievements. Taking over his job as director in July, he has moved forward with vigor in tackling the mounds of paperwork and talking necessary to his job.

He turns out releases for the papers and TV and Radio stations. One of his prime methods of furthering the UCSB image in

the Santa Barbara community was through a press luncheon held on September first at Coach Jack Curtice's Dos Pueblos apartments. There the press and other media were given a first hand view of the players at work--eating.

Chancellor Cheadle and Registrar Harder attended the function along with statistician Bob Walter and the coaching staff. The Chancellor advised Coach Curtice "to win more

than he lost" and the luncheon was considered a success.

With a background in the San Francisco News media and being Sports Editor of his college newspaper, Mr. Bernstein intends to help these media in any way he can. He recently did a series of special interviews at the U.S.-Russia Track Meet in Los Angeles and plans to keep UCSB sports information moving forward with the growing requirements of a growing campus.

LUCKY PIERRE



Man's best friend, and dog.

When you want the best, friend, get Lucky and enjoy the beer beer-drinkers drink!

General Brewing Corp., San Francisco, Azusa, Calif., Vancouver, Wash., Salt Lake City, Utah

Telephone 96-82310

ISLA VISTA
955 F Embarcadero Del Mar

PHARMACY
(Isla Vista) Goleta, Calif.

WILKINSON

BLADES Stainless Steel

79¢

Made in England

Tennis Balls SPECIAL 3 for

\$1.49

AQUA NET

Hair Spray SPECIAL

98¢

SHEAFFER

PEN With 7 Cartridges Special

\$1.00

LIFE

Hair Treatment Reg. \$3.00 Special

\$1.98

STYLE

Hair Spray Reg. \$1.59 Special

89¢

HELENA RUBINSTEIN

SHAMPOO Reg. \$2.50 SPECIAL

\$1.50

DOROTHY GRAY
SCRUB SOAP &

LOTION Reg. \$1.50 Special

\$1.00

MAX FACTOR

Deodorant Reg. \$1.00 SPECIAL

79¢

PRO

Tooth Brush Reg. 65¢ SPECIAL

49¢

WHITE

Envelopes 100 SPECIAL

39¢

Telephone 96-82310

ISLA VISTA
955 F Embarcadero Del Mar

PHARMACY
(Isla Vista) Goleta, Calif.

Adams sees successful year in cross country

"We'll start by running 70 miles per week, then work up to about 110," stated cross-country coach Sam Adams at his first greeting session with this year's team. None of this was unknown to the team however. Led by Jack Roach, Reo Nathan, Jim Allen, and Jon Brower, the team looks for an outstanding season this coming year.

Roach led the team last year as he consistently finished high in meets against teams such as UCLA and other Southern California stalwarts. Nathan, and Allen also placed high at the meets, although only freshmen at the time.

They later went on to bolster the performance of a fine Freshmen track team, which broke many records in its season. Nathan was able to bring down the half-mile mark to near the 1:55 minute level. Meanwhile, Allen was sparking an assault on the two-mile record, which went below ten minutes.

This season, the team faces a tough schedule. Although it is only tentative, the main teams are confirmed with only a meet against Fresno State and Long Beach State remaining to be confirmed. This will all be considered by Assistant Athletic Director Ray Ward within the week.

As it exists, the schedule is ready to begin this Saturday on the campus. Our own course will be invaded by the Westmont Warriors. The Warriors are sparked by such runners as Doug Wiebe, and run a fast pace over the four mile course.

This course stretches around Robertson Gymnasium down the road by the Student Union, along the Lagoon and through a circuitous route along the beach finally returns its steps back to Robertson Gymnasium.

Westmont works out on its own course--rated one of the

toughest in the West. With many hills, it tends to toughen the Warriors up for any competition. The Gauchos will get a true test of their mettle if past meets are any indications of the current situation.

Following the Westmont encounter, the Gauchos take on Long Beach at Long Beach. Long Beach generally rates with the best teams on the coast. San Fernando Valley State will host the UCSB harriers after that trip.

All of these meets lead up to one of the most important meets of the season, the UCSB Invitational AAU Run. Over 30 schools usually send runners to compete in this event, and the competition is outstanding.

Generally, a large crowd turns out to follow the course of the runners as they tour the campus. Roach was able to place in the top ten in this event last year. Nathan and Allen also did well.

Following this large meet, the Gauchos find themselves again up against the Westmont Warriors. At that time, the meet will take place on the Warriors home course.

Fresno State and Long Beach then get together with the UCSB distance men to tangle in a tentative match at Fresno. Fresno also has done well in state competitions, and this meet should prepare the Gauchos for the All-Cal meet to follow.

Last year, this meet was held at UCLA. The University of Southern California was invited to compete also, and won the meet with UCLA second, Berkeley third and the Gauchos last. With more experience, the Gaucho harriers could improve their point total.

USC was led in that meet by the famous Julio Marin. He led all runners around the course as he and two other Trojans were among the first five finishers. From then on, UCLA and Cal fought it out for third and second as the Gauchos found themselves lacking in overall depth.

Fresno State then returns to the long path on the UCSB campus for a meet. This should be interesting, as the comparative performances of the Gaucho team at these two meets, one before, and one after, the All-Cal competition may be close together or far apart.

The last home meet of the season comes against two old rivals. Cal Poly at San Luis Obispo has always engaged in spirited battles with the UCSB harriers and football team. Idaho State trounced the UCSB track team in a dual meet, only to lose to them at the Easter Relays track meet held in Santa Barbara.

A breather of 11 days then ensues before the Gauchos go to the NCAA Regional Meet to be held in Fresno at Fresno State's Lake Course. This will culminate a season which can be very successful, if every runner approaches the limits of his potential, according to Cross-Country Coach Adams.

Injuries may play an important part in the future of the team, as ankles and shins take the tremendous pounding of running over the uneven terrain of the cross-country course. Last year this ailment of shin splints affected many of the runners--keeping them out of competition for nearly a week at a time.

Anyone interested in running cross-country is encouraged to contact Coach Adams at the Intercollegiate Office before he files his packet.



Notice

The Red Lion offers



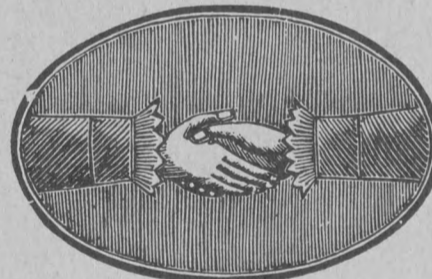
unsurpassed selection



inimitable service



leisurely surroundings



and an honest deal . . .



Red Lion Book Co.

Textbooks, Gift Books, Records,
Prints, Posters, Special Orders
Our Specialty, Paperbound Books
In Time-honoured Isla Vista
Open Evenings - Phone 8-2507

SEARS — Santa Barbara

YOU CAN COUNT ON US . . . FOR LOW PRICES

SEARS
ROEBUCK AND CO

Electric TYPEWRITER SALE

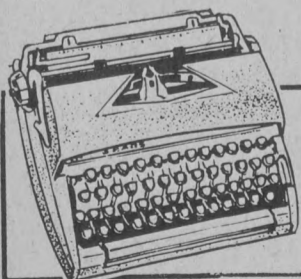
The Sears
Electrics

So automatic . . .
so effortless
you get true
Power Typing

Standard pica or elite
\$144.95* 9 1/4-inch carriage



No Money Down
On Sears Easy Terms



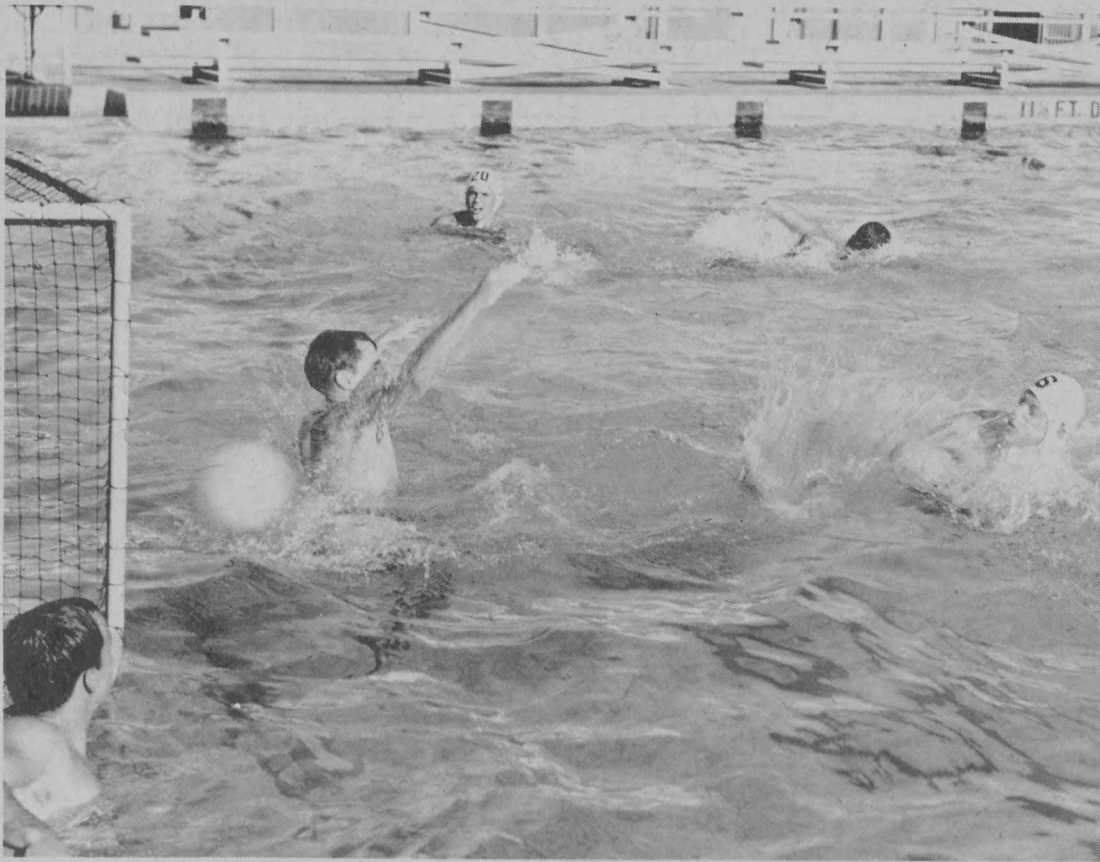
No manual Typewriter at this price can do what our President model can do!

No. 5202B \$99.88
12" carriage -- Sale Price

SEARS

★ 1221 STATE ST. ★
PH. WO. 2-9165

STORE HOURS
Mon. thru Sat. Friday
9:30-5:30 9:30-9:00



DON ROTH SCORES DURING WATER POLO PRACTICE LAST YEAR.

SCHIESEL COACHES WATER POLO

Mike Schiesel was appointed head coach of the UCSB water polo team for the coming 1964 season on September second. This appointment came after Schiesel had served as assistant UCSB swimming coach during the 1964 season.

Schiesel was an all CCAA water polo player during the Gauchos' 1962 season. He had been captain of the 1963 team and was one of the top scorers on the squad. He played for the

National Champion water polo team--Inland Newpike in 1962.

Athletic Director for UCSB, Stan Williamson, was pleased by the appointment and said, "We feel confident that Schiesel will do a fine job with our water polo team this year."

Much depth will characterize the team, if everyone who showed, returns. Such players as All-Cal First Team Nominee Don Roth, Franz Nelson, John Mortenson, and Jeff Saley, will

return to help the team toward another season of victories.

Ten teams will face the UCSB squad during the coming season. All have faced the Gauchos before and given them stiff competition. On October second, the Gauchos face San Diego State in the first of four home straight home encounters.

After the campus pool finishes getting its repainting job, the team should begin workouts.

**it's GREAT
to be IN!!**

**A-1
Tapers®
slacks**

AUTHENTIC
IVY STYLING

AT YOUR CAMPUS HEADQUARTERS STORE OR WRITE:
KOTZIN COMPANY, LOS ANGELES 15, CALIF.

AVAILABLE

AT.....

BILL TOMLIN
MEN'S SHOP

6551 TRIGO RD.
In Isla Vista
8-4810

5850 HOLLISTER AVE.
In Goleta
7-4801

WIN \$100 BY NAMING THIS BUILDING

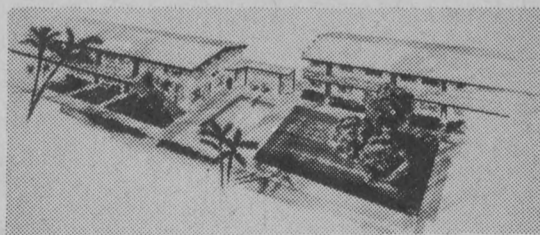
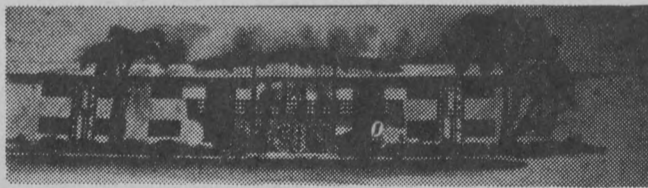
AT 811 CAMINO PESCADERO IN ISLA VISTA

- NOW LEASING

\$47.50

PER STUDENT

- APPROVED FOR
MEN AND WOMEN
STUDENTS



- 47 OVERSIZED
DELUXE UNITS
- RECREATION ROOM
- 20x40 SWIMMING
POOL
- LANDSCAPED
INTERIOR PARK

SUBMIT YOUR NAME AND REASON FOR CHOOSING IT IN 50 WORDS
OR LESS TO THE EL GAUCHO OFFICE NOW.

CONTEST OPEN ONLY TO STUDENTS OF UCSB. ONE ENTRY PER STUDENT.

CONTEST ENDS SEPTEMBER 30, 1964. AWARD MADE OCT. 15.



JUDGING WILL BE BY STUDENT PANEL TO DETERMINE TOP 3 CHOICES. FINAL DECISION
BY OWNER.

Section C

El Gaucho

Thursday, September 17, 1964
Page 17

Unlimited opportunities

Groups offer special rewards

Forty student organizations on the UCSB campus dedicated to service, scholarship, and leadership, offer rewards for academic achievement and outlets for special interests.

The honorary groups range from those affiliated with a particular discipline to those more general in nature.

Squires, men's honorary, and Spurs, the women's service group, are composed of sophomore men and women who have met academic requirements, in addition to leadership, activities and dependability prerequisites.

Chimes is a similar organization for junior women which is dedicated to serving the university, promoting close faculty-student relationships, and working on junior class projects.

Crown and Scepter is open to senior women with a high academic standing. The group promotes scholarship, leadership, service and university loyalty, and acts as a sounding board for student opinion.

Blue Key is a national honorary service fraternity open to junior and senior men who have attained a grade point average higher than the all-men's average and who are proven leaders.

California Club, limited to 20 members on this campus, is an all-university honorary organization. Selected student leaders from all UC campuses present their views to President Clark Kerr and help increase awareness of their own campus

Chancellor host to huge turnout

Registration Week activities began Sunday with the annual Chancellor's reception for new students and their parents in Ortega Commons.

Greeting over 3,000 new students were Chancellor and Mrs. Vernon I. Cheadle; Dr. Stephen S. Goodspeed, vice chancellor for student affairs, and Mrs. Goodspeed; Dr. Russell Buchanan, vice chancellor for academic affairs, and Mrs. Buchanan.

Record enrollment of 7,500 students is expected when classes begin on Monday.

Sophomores plan session Monday

There will be an important meeting of the Sophomore Class Council next Monday, Sept. 21, at 4 p.m. in the lecture room of South Hall. It is important that all those interested in joining this year's Sophomore Council attend this important meeting, according to John Turcato, V.P.

Now at
CAMPUS FLORIST!

"New Bouquet of the Month"

To be eligible simply sign up once a month

in relation to the state-wide university.

Almost all departments have clubs designed to stimulate student interest in their major fields. Groups generally sponsor guest speakers and other events to increase their members' knowledge of their major field.

General interest organizations such as Block "C", Circle K Club, Colonel's Coeds, International Relations Club, Honeybears, and others, also play a major role in student extracurricular activities. Membership requirements and projects vary, but "service to UCSB" is the primary function of most of the groups.

GaUCHO defined! take your choice

Question: What is EL GAUCHO? Answer: a gaucho is a te'-drinking, rope-toting, swashbuckling, semi-literate Argentine cowboy.

He is also the namesake of University of Goleta students, and parenthetically, of the thrice-weekly student-operated school paper.

This semester, EL GAUCHO initiates the use of Associated Press wire service to supplement its local news columns.

Proposed size is eight to twelve pages per issue, and the reading matter is campus news, views, teacher features, lively editorials, and news of the nation in brief.

EL GAUCHO, placed in distribution boxes Monday, Wednesday, and Friday mornings by the Squires, is partly financed by an Associated-Students appropriation of \$14,000, according to Editor Dave Dawdy. Advertising income boosts total operating capital to \$35,000 per year.

Last semester, nearly 60 editors and staff workers compiled each edition. Signs are currently being held in the EL GAUCHO office.

Grid fans desired

Students who are interested in bus transportation to out-of-town football games should notify the Recreation Office in the old gym.

Arrangements will depend on student interest. There will be seven away games and four home games this year.

President Cook discloses future plans for 1964-65 Student Legislative body

"I plan to make Student Government more effective by taking up issues of serious concern to all students," remarked AS President Ron Cook, in an interview discussing his plans for this year's Student Government.

Cook qualified this statement by saying he will try to have less time spent on "trivialities such as minor changes to the constitution." He plans to spend more time on problems like teachers having to publish a certain amount of written material, making Isla Vista groups more a part of campus life, and trying to provide more types of activities which are of interest to all students.

Campus speakers this year will be people of top political interest, according to Cook. This has been facilitated by the appointment of Bob Sogge, who will be involved with arranging for speakers.

ISLA VISTA BUSES

Another new improvement this year is the addition of buses for student transportation. There will be four buses serving the Isla Vista area.

Among the responsibilities of the AS President is serving as Chairman of Legislative Council, meeting with the AS Board Chairman once a week to determine the agenda for Leg Council meetings. The AS President also meets quarterly with President Clark Kerr and student presidents from all the University of California campuses.

AS Vice President this year is Gary Jones, and secretary is Jane Weber. Senior Class President is Mike Milakovich, Dave Thomas is Junior Class President, and Bill Pascoe is Sophomore Class President.

COMMITTEES

Barbara Riley is Chairman of the Activities Calendar Board, which regulates and coordinates all student and University activities. Some of the board's functions are to put out a calendar of events, register campus organizations, and approve fund-raising events.

Assembly Committee is headed by Jill Ramsell. The committee arranges, directs, and promotes assemblies, lectures, and other Associated Students-sponsored programs.

Randi Newbill will manage Awards Committee, which handles all Associated Students Awards. The committee also presents the annual AS Awards banquet.

"It is better to light one candle than to curse the darkness."
For more light on many subjects visit

THE
AMERICAN OPINION
BOOKSTORE
132 E. Canon Perdido 6-0117
Open 10-5 Tues.-Sat.
Closed Sun., Mon.

CHRISTIAN SCIENCE ORGANIZATION

Welcomes You

First Meeting Thursday, Sept. 24, 4:15 p.m.

U.R.C. Bldg., 6518 El Greco Rd.
Isla Vista

Transportation provided from bus stop in front of Student Union each Thursday at 4 p.m. For information and transportation to church services call WO 7-3794.

Lois Salisbury is chairman of Charities Committee, which coordinates campus fund raising for the annual Blood Drive, Council of Christmas Cheer canned foods drive, and charity

of the various department commissions.

Martha Frank is chairman of Elections Committee. This group organizes all regular and special elections.

Finance Committee is headed by Kris Giebler. The committee manages the fiscal policy and plans the budget. It also reviews the financial operations of student-owned operations.

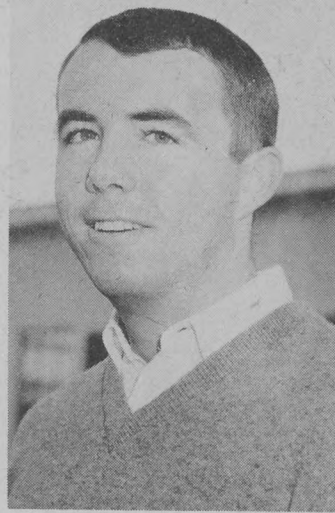
IFC

Interfraternity Council is presided over by Jim Briscoe. This group works to promote closer cooperation and congeniality among fraternity members.

Bernie Camins is chairman of Judicial Committee, which has all the judicial power of the Associated Students. It determines what action should be taken in disciplinary cases.

Library Committee is lead by Judie Dunn. This is a liaison group between the administration of the library and the stu-

(Continued on page 20)



needs which come up during the year.

LOCAL RELATIONS

Community Relations Committee is lead by Roger Pearson. Its job is to promote relations between the Santa Barbara community and the campus.

Constitution and By-laws Committee is headed by Dave Hunsaker, and is responsible for writing and presenting new legislation to students.

Ron Peterson is head of Department Commissions Board, which supervises the activities

Open TUESDAY thru SATURDAY

CAMPUS BARBER SHOP

In the Student Union

APPOINTMENTS ACCEPTED
9 a.m. to 6 p.m.
CALL
8-9121

4 BARBERS AT YOUR SERVICE
Flat-Tops, Crew-Cuts, Ivy Leagues

KIMO SAYS:
Cool, Colorful and Comfortable Clothes

KIMO'S POLYNESIAN SHOP

906 STATE STREET — PHONE 2-3111

Porky's Presents
956 Embarcadero del Norte

LITTLE MAN ON CAMPUS

LOWER DIVISION
VETERANS
CHECK STAND SHOW ALL COURSE CARDS HERE
EVENING DIVISION
TRANSFER STUDENTS HERE
CLUB ACTIVITIES AT TABLE 42
NEW STUDENTS
HEALTH CARDS MUST BE STAMPED
PROVISIONAL STUDENTS THIS TABLE
RESTRICTED CARDS HERE
SCHOLARSHIP TABLE FILL HERE
PROVISIONAL STUDENTS
TABLE 5
SHOW PERMIT TO ENTER HERE

EXIT
FOREIGN STUDENTS
MAJOR & MINOR COURSE CARDS ISSUED TABLE 73
ADVISOR'S TABLE
NO SCHEDULE CHANGES UNTIL TUESDAY 27
NEW STUDENTS MUST FILE STATEMENT OF RESIDENCE
PHYSICAL EXEMPTIONS BY DR'S PERMIT ONLY
ADVISOR'S CARD MUST BE SIGNED

ALL STUDENTS MUST PURCHASE STUDENT BODY

TABLE 4
SHOW FEE RECEIPT HERE

GRADUATE STUDENTS GO TO GYM

WE NO LONGER REQUIRE ENTRANCE EXAMS OR APTITUDE TESTS — IF YOU CAN MAKE IT THRU REGISTRATION & ENROLLMENT — YOU'RE IN!

18 Greek Houses Operated at University,

"To join, or not to join, a sorority or fraternity." This decision is an important one during undergraduate years at Santa Barbara as well as in later years of life.

Fraternities are not a new development in the United States. The first fraternity was founded in 1776 (Phi Beta Kappa), and the institution has been constantly expanding since that time. Some of the greatest leaders of our century have been fraternity men and women in college who give credit to the valuable experience they gained from their organizations in undergraduate years.

"The objects of a Fraternity are to establish a brotherhood of, and for, college men; to promote scholarship and literary culture; to advance the cause of education; to raise the standard of morality and develop the character of men; to diffuse culture; and encourage chivalry among men. It aims to cope with

problems of life, and give the members an appreciation of life's real values."

The fraternities at Santa Barbara include 7 chapters and 3 colonies. These ten fraternities provide a wide variety of choice



Alpha Delta Pi

SIGMA PHI EPSILON
 Founded at: Richmond College in 1901.
 Active chapters: 155.
 Local chapter established: 1947.
 795 Embarcadero del Norte

8-2114.

SIGMA PI
 Founded at: Vincennes University in 1897.
 Active chapters: 65.
 Local chapter established: 1948.
 895 Camino del Sur -- WO 8-3315.

PHI KAPPA PSI
 Founded at: Jefferson College in 1852.
 Active chapters: 63.
 Local chapter established: 1964. (colonized Fall 1962)
 1000 El Embarcadero -- WO 8-2412.

COLONIES
ALPHA DELTA PHI
 Founded at: Hamilton College in 1832.
 Active chapters: 29.
 Colony established: Spring 1964.
 6599 Sabado Tarde.

SIGMA CHI (Chi Sigma Colony)
 Founded at: Miami University in 1855.
 Active chapters: 150.

Colony established: Spring 1962.
 6660 Abrego Rd.

PHI SIGMA KAPPA
 Founded at: University of Massachusetts in 1873.
 Active chapters: 72.
 Colony established: Spring 1964.

722 Embarcadero del Norte
 Sororities are similar to men's fraternities because they "are groups of college women with many common interests who live together for the major part of their university life in a closely knit organization."

"The purposes of a sorority are: to enrich and broaden the friendships of its members; to encourage the development of the finest qualities of its members; to promote high scholarship and an interest in college functions and organizations; to teach cooperation and develop community and group interests; and to train members in the appreciation of people in such a way that the desire for friendships extends beyond the limits

(Continued on page 19)

Annex-Dotes



by BETH GOODFRIEND

Hi,
 I'm Beth Goodfriend, your new Campus Representative for the Lou Rose Annex. My column will appear in the EL GAUCHO every week, and I'll be telling you about campus events and the very latest in LRA looks. I'll also be in the Annex every Saturday and I'd like to meet all of you very much -- just browsing at Lou Rose is fun, too!

With the new semester close at hand, I'd like to take this opportunity to welcome all the "old timers" back to UCSB, and to extend an extra special welcome to our new Class of '68.

Good Luck in the coming months,
 Beth

P.S.
 To help you get into the swing of the Fashion Semester the Annex is presenting an informal fashion rally this Saturday, September 19, at 1:00 p.m. in Santa Cruz Formal Lounge. There'll be Door Prizes, Fashion, Food, and Fun. Hope I'll see you there!

LOU ROSE
annex
 1309 State

for the rushee.
CHAPTERS
DELTA TAU DELTA
 Founded at: Bethany College in 1859.
 Active chapters: 91.
 Local Chapter Established: 1949.
 6706 Sabado Tarde -- WO 8-3417.

KAPPA SIGMA
 Founded at: University of Virginia in 1869.
 Active chapters: 137.
 Local chapter established: 1946.
 6551 Segovia Rd.

LAMBDA CHI ALPHA
 Founded at: Boston University in 1909.
 Active chapters: 151.
 Local chapter established: 1947.
 742 Embarcadero del Norte -- WO 8-2589.

SIGMA ALPHA EPSILON
 Founded at: University of Alabama in 1856.
 Active chapters: 153.
 Local chapter established: 1949.
 6504 Pardall Rd. -- WO 8-9014.



Alpha Phi

Miss Pat

Campus Fashions

presented by



the store behind
 the big tree

1309 State Street
 Ph. 5-6565

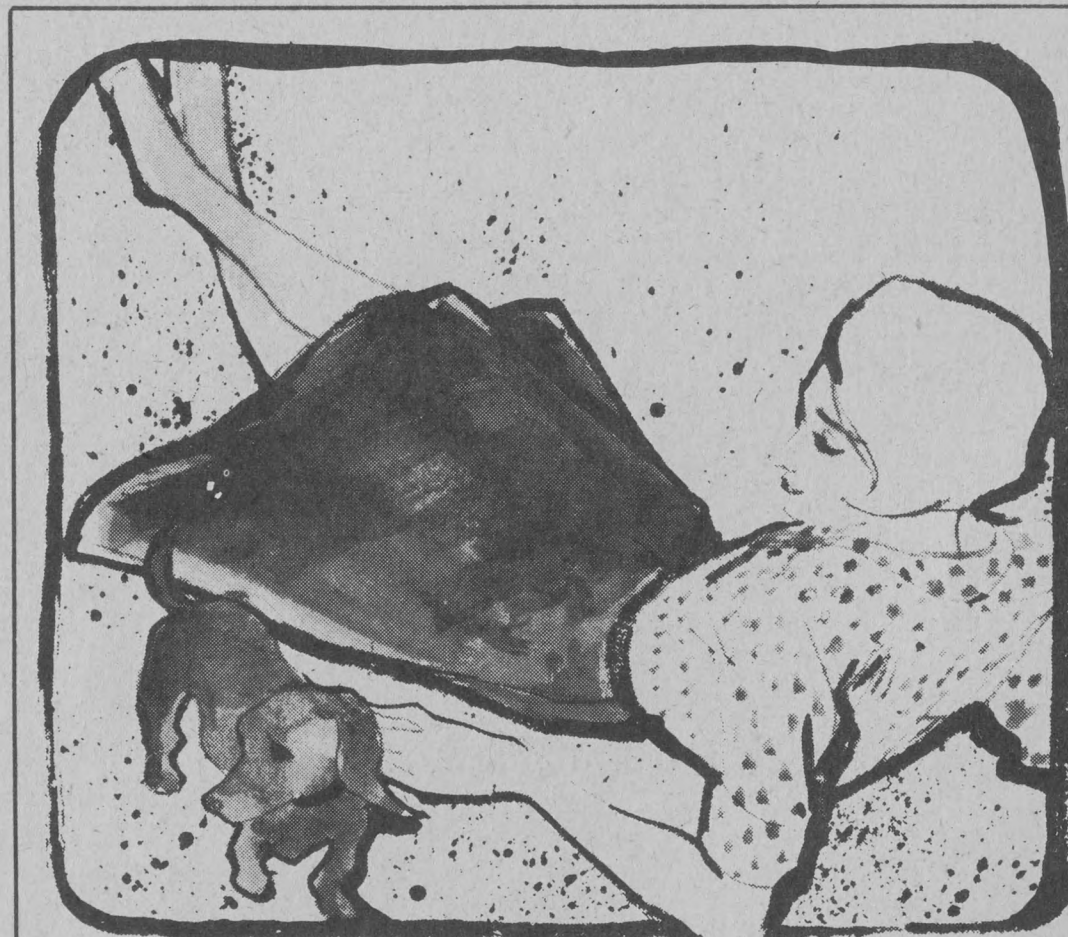
handbags
 sandals
 belts
 jewelry

the Leather
 Gallery



2315 Lillie Avenue
 Summerland, Calif.

First Summerland Turnoff
 Telephone WO 9-3457
 Open 7 days 10 a.m. to 8 p.m.



A must for campus—the A-skirt from Miss Pat Regimentals. Happily in Galey & Lord poplin of Fortrel® polyester and combed cotton that won't wrinkle, will wash and wear. All the best college colors. Sizes 5-15, 6-16. At Lou Rose, Santa Barbara.



Galey & Lord

Kappa Sigma Oldest Chapter on Campus

(Continued from page 18) of the sorority group." There are 8 sororities at Santa Barbara giving the rushee a wide choice of group interests and ideals.

ALPHA DELTA PI
 Founded at: Weleyan Female College in 1851.
 Philanthropy: Crippled Children's Society
 Active Chapters: 105.
 Local chapter established:
 Note: (All the sororities on the Santa Barbara campus were chartered on the same day-January 1, 1950.)
 6507 Cordoba WO 8-9017.

ALPHA PHI
 Founded at: Syracuse University in 1872.
 Philanthropy: Heart Association.
 Active chapters: 74.
 840 Embarcadero del Norte--WO 8-9004.

CHI OMEGA
 Founded at: University of Arkansas in 1895.
 Philanthropy: Christmas Kindness
 Active chapters: 132.
 6549 El Colegio -- WO 8-9059

DELTA GAMMA
 Founded at: Lewis School in 1873.
 Philanthropy: Sight conservation and Aid to the Blind.
 Active chapters: 91.
 6507 Picasso -- WO 8-1086.

DELTA ZETA
 Founded at: Miami University in 1902.
 Philanthropy: Carville Hospital for Hansen's Disease; Galludet
 College for the Hard of Hearing.
 Active chapters: 143.
 6525 Picasso -- WO 8-9001.

KAPPA ALPHA THETA
 Founded at: DePauw Univer-

sity in 1870.
 Philanthropy: Institute of Lopedics.
 Active chapters: 87.
 6551 El Colegio -- WO 8-1081

PI BETA PHI
 Founded at: Monmouth College in 1867.
 Philanthropy: Pi Beta Phi Settlement School, Gatlin-

burg, Tenn.
 Active Chapters: 108.
 763 Camino Pescadero -- WO 8-3588.
SIGMA KAPPA
 Founded at: Colby College in 1874.
 Philanthropy: Gerontology; Marine Sea Coast Mission.
 Active chapters: 100.
 761 Camino Pescadero -- WO 8-9041.



Chi Omega



Delta Gamma

THE OLD ORDER CHANGETH
 Leslie's Art Supplies is now
Benwitt's Art & Engineering Supplies
 WE ARE INCREASING ALL LINES OF ART MATERIALS, DRAFTING SUPPLIES, PAPERS AND SCULPTING MATERIALS.
 UCSB STUDENTS ARE ENTITLED TO A DISCOUNT OF ALL MATERIALS PURCHASED.
 PLEASE PAY US A VISIT SOON.
 1305 STATE STREET -- 5-1079

Gilkeson, Lanier get elite grants

Two students at UCSB have been awarded Fulbright grants for graduate study and research abroad.

The recipients are Susan Gilkeson, a graduating senior in English and German, and Sidney Lanier, a French major who earned his bachelor's degree at UCSB last year.

STUDENTS-WIVES FACULTY

NEED FULL OR PART-TIME

WORK?

MANY FINE POSITIONS AVAILABLE!

avail[®]**ABILITY**

OF SANTA BARBARA AGENCY, INC.

100 Hope Ave. Behind Loop's 3800 N. State 7-4565

separates with a vested interest

Team the brass buttons vest with either skirt, add a variety of blouses, and you have a whole trans-season wardrobe!

50% Frotrel and 50% cotton.

VEST . . . 7.95

FULL SKIRT . . . 11.95

SLIM SKIRT . . . 6.95

on the play deck

Free parking in rear . . . "merchant's lot"

917 state st.

phone 2-7627

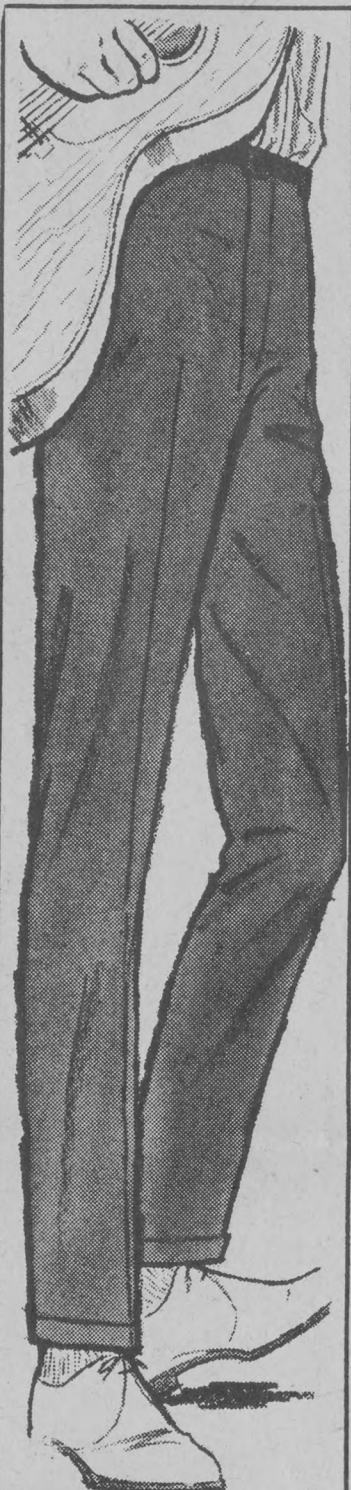
Medallion Motel
 Santa Barbara

- Television
- Room Phones
- Tubs and Showers
- Sound-proofed Rooms
- 50-Ft. Heated Pool
- Spacious Dressing Areas

Use La Cumbre Turn-Off

3840 STATE ST. -- Ph. 7-3441

DID YOU KNOW . . .
CAMPUS FLORIST
 has free delivery
 968-1134



NEW HOOT HIT

CACTUS DAN, THE BIG-BEAT MAN
 You may be a gamblin' man

Or drink the devil's brew.
 Men have been doin' it since man began—
 But they've kept their women true!
 How-O, How-O do they keep from gettin' the ax?
 Like Cactus Dan, they got a plan—
 A-talkin' sweet an' a-lookin' neat
 In Cactus Casuals slacks.

CACTUS CASUALS L.P.s
 (LONG PLAY SLACKS)
© ELDORFER HEYEMANN 1964



Delta Zeta



Kappa Alpha Theta

AS committees active

(Continued from page 17)
 dent body. It acts mainly in an advisory capacity concerning library policy.
 Music Committee is presided over by Ed Kemprud. The Committee is responsible for maintaining the music program of the Associated Students.

PANHELLENIC
 Panhellenic Council is headed by Dottie Pipkin. Its function is to co-ordinate all sorority activities. It makes policies and reviews matters concerning sororities in general.

Personnel Committee is chaired by Mike Lowry. It is responsible for the establishment and maintenance of working policies for ASUCSB employees.

Corky Wells is Chairman of the **Publicity Committee**, which regulates publicity for the students. It makes posters, banners, and works in conjunction with El Gaucho and KCSB.

Rally Committee is led by Jay Jeffcoat. The committee promotes school spirit at all athletic events and decorates the stadium or gym.

REC COMMITTEE
 Recreation Committee is headed by Dave Forman, and is responsible for promoting and co-ordinating all recreational activities sponsored by the Associated Students.

(Continued on page 23)

For Your
CACTUS CASUALS
 See us at

BILL TOMLIN MEN'S SHOP
 6551 Trigo Rd., Isla Vista Ph. 8-4810
 5850 Hollister Ave., Goleta Ph. 7-4801

CA-100 SUPER CUB 50cc
 4-stroke OHV 5 h.p.

 200 m.p.g. • 45 m.p.h.
 3 speed Transmission Automatic Clutch
\$245⁰⁰
Honda of Santa Barbara
 408 CHAPALA Ph. 5-4814
 100% Financing with Approved Credit



Pi Beta Phi

VAN GOGH INSPIRED SUNFLOWER PRINT ON FLANNELETTE DREAMWEAR

by *m. c. Schrank*

A beguilingly feminine collection to choose from . . . all in soft 'n warm flannelette . . . artfully designed for sleeping and lounging comfort. Sunflower Gold, Provence Pink or Beau Blue on white.

\$6.00



#7317-SLEEP COAT
 Sizes S/M/L. \$6.00



Intimate Apparel

1303-A STATE STREET PHONE 6-6953
 PARKING Arlington Theatre Lot - Enter from Sola Street



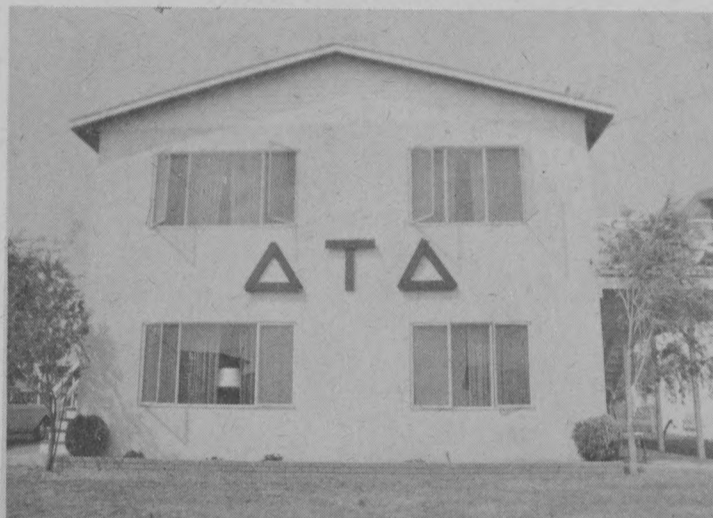
Sigma Kappa



Lambda Chi Alpha



Alpha Delta Phi



Delta Tau Delta

New house

The Alpha Delta Phi Colony recently completed moving into the new chapter house at 6599 Sabado Tarde.

The property includes an adjacent vacant lot where a volleyball court is being constructed.

WELCOME GAUCHOS!!!

In order to afford Union Oil customers with another customer convenience, we have instigated a program of selling health and beauty aids, automotive accessories, novelties, toys, and other sundry merchandise in various Union stations throughout Southern California. We call our stores Minute Marts and feel that there is a great need for utilization of service stations to serve more than only the petroleum requirements of the public.

All merchandise sold in our Minute Mart stores are nationally advertised brand names and are fully guaranteed. Merchandise can be charged on Union Oil, Diners' Club, and Carte Blanche credit cards. A regular program of merchandise specials has been inaugurated at Union's Minute Marts in order to afford our customers outstanding values in regularly stocked merchandise."

Mr. Cliff Smith
Union Oil Service Station
Embarcadero del Mar
and Pardell
Goleta, California



Chi Sigma

Frosh coeds vie for title

Alpha Delta Phi Fraternity is sponsoring a Freshman Rush Queen contest during fraternity rush activities this week, according to Wayne Reese, AD president.

Votes of the 700 men expected to visit the Alpha Delt house during rush will decide the queen. Over 1700 entering coeds, mostly freshmen, were invited to enter the contest, and 29 finalists were chosen from 300 entrants.

Reese stressed that the contest, an innovation and expected to become an annual event, is not closed to freshmen girls who are not going through sorority rush.

Alpha Delt sweatshirts have already been presented to the finalists.

A personal trophy from Alpha Delta Phi will be presented to the queen at a coronation event to be held on September 25. The princesses will receive charm bracelets.

Delts plan house

Design motifs on campus and the quiet suburban look will be combined in the construction of the new Delta Tau Delta chapter house.

The two-story structure will be located on Segovia Rd., and will house 45 students within its 9500 square feet of living area.

The plan includes a special game room adjacent to the dining room, a sheltered patio area, parking spaces, and dining facilities for 100 persons.

CAMPUS HEADQUARTERS FOR

CONVERSE SHOES

"Call us for all your needs"

7-2128

Smith's SPORTING GOODS

5737 HOLLISTER AVE.

HEY GAUCHO GUYS AND GALS--

Here's Food For Thought:

Registration and start of classes is always a hectic time. Why not take a well-deserved break? Treat yourselves to "the best malts, shakes, and burgers in town" at Foster's Freeze.

P. S. While you're there, enter the fabulous Foster's Freeze Football Fan contest. You can win tickets to Los Angeles Rams' home football games, Foster's Freeze merchandise certificates, and maybe a trip to the Rose Bowl!

See you at



6023 Hollister Avenue
Goleta

TRENWITH'S Young Fashion Shop

welcomes you back to school and invites you to visit our new shop. Featuring junior and junior petite sizes.

TWO IMPORTANT LOOKS ON CAMPUS



Jumper

Black and white check bonded wool or reed wool flannel, as shown in Seventeen. Neckline and slash pockets trimmed with contrasting leather. Junior sizes 5 to 13.

17.98

BASIC SHIRTS...3.98-4.98

Shift

Chelsea school-girl look in grey flannel stripes with a scarlet tie, white Arnel-and-rayon collar and cuffs. Junior sizes 5 to 13.

14.98

TRENWITH'S

829 STATE STREET
Phone 6-3126

RENT or BUY a
SILENT SUZUKI
In Isla Vista
6576 Trigo Rd.
Across from
Bank of America
968-2203

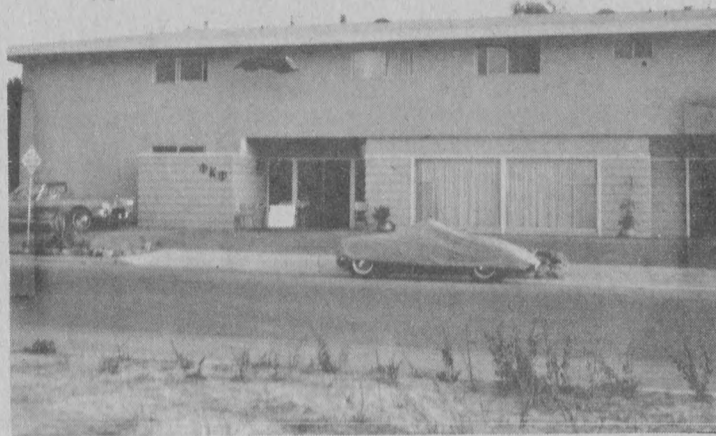
Enjoy TV in the
SUZUKI Lounge



Kappa Sigma

GREEKS!
Did you know
CAMPUS FLORIST
has monogrammed
Greek glassware
designed especially for you?

ORGAN -- PIANO
Instruction in Your Home
Goleta Area
Kenneth E. Bartlett
7-2746 - 7-4471



Phi Kappa Psi

Ott's 727 STATE



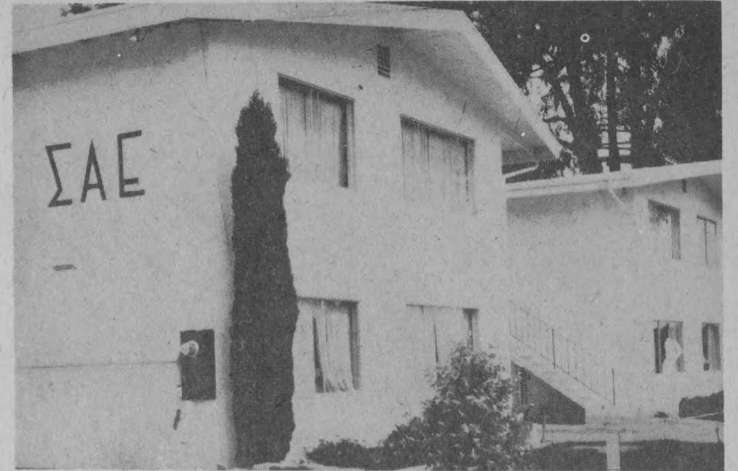
Corduroy Capers by Graff of California in separates and pair-ups for every mood. Your favorite fall colors. \$12

Honeybears seek new applicants

Applications for Honeybears may be obtained in the AS Office Monday through Wednesday.

Honeybears will begin interviewing interested women students on Wednesday. Interview appointments may be made in the AS Office when applications are filled out.

Honeybears is the official campus hostess organization and is open to all women students who are interested in meeting new people.



Sigma Alpha Epsilon

Hardin's views published

"Population, Evolution, Birth Control," edited by and containing major contributions by Dr. Garrett Hardin, professor of biology, has recently been published in hard cover and paper back.

The book, contains over 100 readings in the three areas of population, evolution and birth

control. It contains 20 essays by Professor Hardin, the Malthusian essay on the principle of population, and selections from Thomas More, Martin Luther, Benjamin Franklin, Aristotle, Tennyson, Charles Darwin, Thomas Huxley, Louis Agassiz, Disraeli, and Matthew Arnold.

FIRST BAPTIST CHURCH

Of Goleta Valley
550 CAMBRIDGE AVENUE

11 a.m. Worship

Bus Transportation Provided

BAPTIST WIFE FELLOWSHIP

4- Bldg.

Howard H. Bess, M.

967-4910 or 967-5064

Attention All Students

The Church of Jesus Christ Latter Day Saints
Institute of Religion
Meets at the U.R.C. Building
6518 El Greco Road in Isla Vista
Get Acquainted OPEN HOUSE,
Wednesday, Sept. 23rd, at NOON

FREE LUNCH
"Bring Your Friends"

GOOD SHEPHERD LUTHERAN CHURCH

380 N. FAIRVIEW AVE.
GOLETA

Invites you to worship.

Services: 8 and 10:30 a.m.
Bible discussion 9:15

Church bus from Isla
Vista and Campus at 10:30.

Feel free to call
Pastor Kramer at 7-5988

LUTHERAN STUDENT ORG.

will have its first meeting on Sunday, Sept. 20,
5 p.m. Friends, Food, Talk, etc.

Phi Psis build chapter room

The Phi Kappa Psi fraternity, which obtained a new house last semester, has added a new chapter room, grand entrance, and circular driveway to the Sabado Tarde side of their structure.

The improvements were designed by Mr. Ernest Watson, architect, and contracted by Mr. William Reverdy, both Phi Psi alumni from the Santa Barbara area.

Included in the future plans for chapter house improvements is the utilization of the vacant lot behind the house as a volleyball court and recreation area.

Connor president of new Phi Sigs

Phi Sigma Kappa, the newly established Santa Barbara colony, was officially inducted at Loyola University Saturday night.

Officers are Ned Connor, president; Bill Easley, vice-president; Bruce MacVicar, treasurer-house manager; Steve Haas, secretary; and Steve White, rush chairman.

ROTC study cites military benefits

There is a strong correlation between military training and success in civilian life, according to a study conducted by the ROTC.

The ROTC grad stands twice as good a chance as his less military-minded classmate to become a congressman or senator. In the world of big business the statistics are six to one that a graduate of the Reserve Officer Training Corps will eventually earn a yearly salary of \$100,000 or more.

DID YOU KNOW ...

Goleta Floral opened the new

CAMPUS FLORIST

especially for students?



UCCF

The United Campus Christian Fellowship

CONGREGATIONAL, DISCIPLES OF CHRIST, PRESBYTERIAN
Invites You To

A Sunday Morning Discussion Series
At 9:30 in the University Religious Conference
6518 EL GRECO RD., ISLA VISTA

Bob Howland, UCCF Campus Pastor--Office in URC--8-2219

FIRST MEETING--SUNDAY, SEPT. 20
Transportation to church provided



Sigma Phi Epsilon

Churches schedule buses

The Methodist, Presbyterian, Baptist, and Lutheran Churches will again provide bus transportation to and from worship services to students living on campus and in the Isla Vista area.

A plainly marked bus will pick up students at any point indicated below and will return all passengers immediately after

conclusion of church services. Following is a schedule of bus stops:

To the University Methodist Church:
 San Miguel Hall 9:05
 Anacapa and Santa Cruz 9:07
 Physics Building 9:10
 Westgate Apts. 9:18
 Tropicana Gardens Apts. 9:20
 To the Good Shepherd Lutheran Church, the Goleta Presbyterian Church, the First Bap-

tist Church of Goleta Valley: Storke Rd. and El Colegio 10:05
 El Colegio and Camino del Sur 10:06
 Camino del Sur and Trigo 10:08
 Trigo and Embarcadero del Mar 10:10
 Embarcadero del Mar and El Colegio 10:12
 Physics Building 10:18
 Anacapa and Santa Cruz Halls 10:20
 San Miguel Hall 10:21

A. S. groups

(Continued from page 20)

John Hambright heads Social Committee, which plans and carries out all Associated Students social events. The Christmas formal is one of the special events planned by this committee.

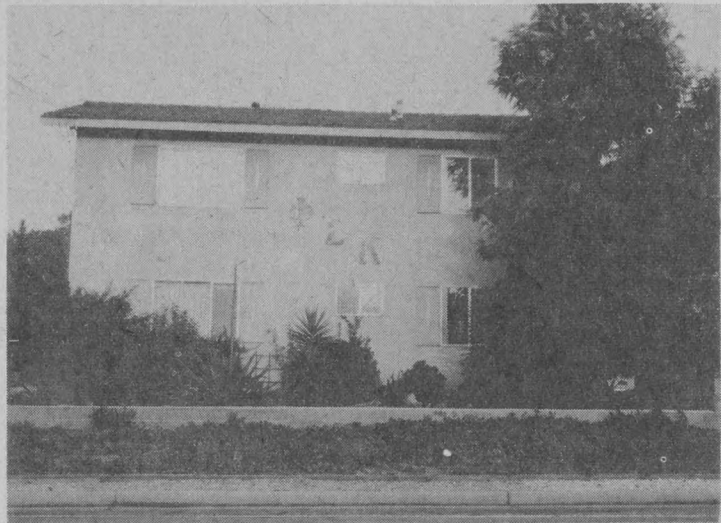
Speakers Bureau, led by Steve Abbot, sends student speakers to various high schools and community organizations throughout the state. Its purpose is to promote a better understanding of the Santa Barbara campus.

Kris Rice is chairman of Special Events Committee, which co-ordinates the major activities of the Associated Students. Some of these activities include the Galloping Gaucho Revue and the Homecoming parade in the fall, and the Roadrunner Revue and Spring Sing in spring.

STUDENT ACTIVITIES

Student Activities Board, led by Steve Wetmore, is responsible for supervising, directing, and developing plans for the Associated Students activities program.

Judie Stone heads the Student



Phi Sigma Kappa

Services Board. This group tries to make plans for student service activities, in addition to supervising and directing plans submitted by others.

Bonnie Gaines, AS Office Manager, heads the Student Union Policy Committee. The purpose of this group is to establish a policy concerning the fiscal balance of the Coffee Shop and Bookstore.

Ann McKenna is head of the

Associated Women Students. The purpose of this group is to strengthen the spirit of good fellowship and unity among the women students. All registered women students are a member of this group.

Other groups are the Camp Conestoga Board headed by Dan Deeter; Athletic Commission, Bob Walter; Building and Campus Development, Glen Carrol; (Continued on page 24)

BACK AGAIN

by popular request we are offering for the fall

OUR

Nationally Advertised collegiate

SWEATshirt

ONLY \$3.98 ADD 50¢ FOR TAX AND HANDLING

ASTOUNDING!

SEND CHECK OR MONEY ORDER TO:

FRATSORITY PRODUCTS

DEPT. A - 1241 WEST 90th STREET LOS ANGELES 44, CALIFORNIA

MALE: S, M, L, XL FEMALE: S, M, L, XL (CIRCLE SIZE & SEX)

ORDER NOW!!

© COPYRIGHT 1964 D. J. STINSON

Welcome Gauchos to



No Item over 88¢

TRI COUNTIES 88 CENTER, INC.
723 STATE STREET



BED PILLOWS

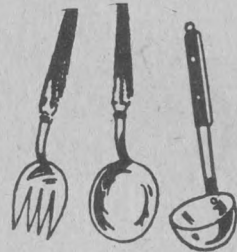
88¢



Aluminum & Enamel
POTS
and PANS

88¢

- TRAVEL POSTERS Pictures up to 16"x20"----- 88¢
- GLASSWARE Such as 9 oz. Tumblers----- 10/88¢
- THROW RUGS 24"x36"----- 88¢
- VASES and FIGURINES None over----- 88¢
- ASH TRAYS Large and Small----- 88¢
- DECORATOR ITEMS None over----- 88¢
- DISH SETS 4-piece Setting, (also open stock)----- 88¢
- BROOMS and DUST MOPS----- 88¢
- WALL HANGINGS in Ceramic----- 88¢



MANY
KITCHEN GADGETS
88¢ or less



Largest Selection of
PICTURES & ARTICLES
for your
Apartment Walls

88¢

- 8,888 items and nothing over 88¢
- The most streamlined operation in the retail business world now in Santa Barbara
- We personally invite you to visit us, soon!



723 State Street

Downtown Santa Barbara

• Phone 5-7488

- Open daily from 9:30 to 5:30
- Friday night open till 9 p.m.
- Closed Sunday

Close to 2,000 students form powerful RHA group

About 25% of the students attending Santa Barbara live on campus. To represent these students, a distinctive governmental structure has been established.

The advisory board of the Residents Halls Association is the cabinet. It consists of the RHA President, Anne Huxtable; vice-president, Forrest Stamper; secretary, Lauren Fisher; treasurer, Bob Marshall; and the presidents of the composite halls.

The Board, which meets every week, makes recommendations on financial and general policy to the RHA Legislature.

A. S. Groups

(Continued from page 23)
Center for the Study of Democratic Institutions, Lee Anne Horine; Foreign Student Agency, Karen Kohrs; and Registration and Scheduling, Bruce Gary.

Other student leaders are Dave Dawdy, EL GAUCHO editor; Rich Govea, KCSB; Helen Iddings, La Cumbre editor; Kouji Nakata, Fraternity Representative; Mike Iverson, Men's RHA Representative; Kay Ashbrook, Women's RHA Representative; Kathy Corey, Women's Non-Affiliated Representative; Dick Mounts, Men's Non-Affiliated Representative.

The legislature is composed of the cabinet and hall presidents, the RHA representatives, and committee chairmen.

Besides dealing with financial affairs, the legislative body sets general policy and has the right to review all of the president's decisions.

By living on campus, a student automatically becomes a member of RHA. RHA fees are

paid out of the housing fees.

Besides the executive cabinet and the legislature a series of committees exist to handle resident halls' affairs.

Chairmen are appointed by the RHA President. They are chosen from those who sign up in their composite halls.

Two dining commons committees work with Ortega and De la Guerra Commons and

handle student complaints.

The primary function of the Social Committee is to plan the RHA formal. The annual pushcart races are handled by the special events department.

Other committees include the Publicity, Publication and the Educational Affairs committees.

Recently formed is the faculty associate committee. Each hall chooses a faculty advisor and submits his name to the faculty associate committee. The committee approves the

choices and sends the list to the Chancellor for final approval.

Besides the governing structure, an integral part of the dormitories is the Resident Assistant. The propose of the RA is to provide guidance, supervision, consultation, and communication with the Deans' Offices.

RA's are also responsible for maintaining order and enforcing regulations.

Lorden appointed director of new University Center

Robert L. Lorden, executive director of the Associated Students, has been appointed director of the new \$3,000,000 University Center. He will also continue in his capacity as executive director of the Associated Students, with additional staff.

Lorden, a 1949 UCSB graduate, served in the Navy during World War II. He was active in student government activities as a under-graduate and received a number of student honors. Following graduation, he became assistant graduate manager and was elevated to

the graduate manager post in 1952. Since then his titles have included business manager and executive director for the student association.

To welcome Chancellor Vernon Cheadle back on campus after his tour of the Orient, the RHA will sponsor a chicken dinner on the Anacapa lawn Sunday from 12:45 to 2 p.m.

This dinner will take the place of Sunday dinner for students living on campus. The RHA officers will be introduced at 1:15.

ADORNE Beauty Salon




Welcomes the Students to
Isla Vista

Advanced Hair Styling

PERMANENT - WAVING - FROSTING
COLORS - MANICURES

Open Evenings by Appointment

6578 TRIGO RD. TEL. 8-2413
Opposite the Bank of America



WELCOME GAUCHOS

Welcome To Your
UCSB
Campus Bookstore

HERE YOU WILL FIND YOUR TEXTS AND CLASS SUPPLIES, THOUSANDS OF PAPERBACKS (1500 NEW TITLES ADDED DURING THE SUMMER), HUNDREDS OF GENERAL BOOKS, AND AN EXPANDED TECHNICAL AND REFERENCE SECTION.

SPECIAL TERM OPENING HOURS		REGULAR HOURS
Friday, Sept. 18	8:30 a.m. - 9:30 p.m.	THEREAFTER
Sat., Sept. 19	8:30 a.m. - 4 p.m.	Mon.-Fri.,
Mon., Sept. 21	8:30 a.m. - 9:30 p.m.	8:30 a.m. - 4:30 p.m.
Tues., Sept. 22	8:30 a.m. - 9:30 p.m.	

ON CAMPUS ● STUDENT OWNED