

# The Carpinteria Chronicle

READABLE - REPRESENTATIVE - RELIABLE

The Only Newspaper In Carpinteria Produced Entirely In Its Own Plant

VOLUME VI

CARPINTERIA, CALIFORNIA, FRIDAY, AUGUST 26, 1938

NUMBER 26

## State Primary Election Of Paramount Importance

Has been necessary to empty the waste basket three times a day so far this week. Politicians are getting in their last digs before the primary next Tuesday and some of them are plenty dirty.

Several lengthy releases have been received from Merriam headquarters, on revealing identity of the man who takes the straw votes and results of latest vote which indicates that Merriam will capture Republican nomination and Olson the Democratic nomination for governor.

Merriam has steadfastly based his campaign on his record of the past four years, his "Pas-as-you-go" method of state financing and the fact that the state has been pulled out of a \$32,000,000 deficit during his administration, and in the face of last minute attacks has maintained the dignity of his office and has not attacked any of his opponents in any of his releases that have reached our desk. There is probably no question but what he has made mistakes during his administration, particularly in regard to fish and game matters, but weighing his mistakes against the good accomplished in the face of conditions existing when he assumed the office it would appear that the balance is still in his favor.

George Hatfield, Merriam's opponent for the Republican nomination, has served ably as Lieutenant-Governor of the state, and would no doubt serve the state just as ably as Governor. Mr. Hatfield started out with a constructive campaign, but somehow has come seriously to mud-slinging during the past week and we believe has lost in popularity as a result. Several releases received this week are devoted to attacking the Merriam administration. One claims that state finances have been juggled in a vain effort to conceal an \$18,000,000 deficit, but no proofs are given. Another paragraph states that Merriam has refrained from making public appearances in the Southern part of the state because he has been booed. However, he was not

(Continued on page 2)

## Vacation School Opens at Community Church Monday

According to a letter received from Rev. Deane F. Babbitt, pastor of the Community church who has been spending his vacation in the Southern part of the State, the Vacation Church School will open next Monday at 9:00 a. m. The theme of the school this year will be "Broadcasting" and has been chosen because the church serves as a broadcasting station for the word of God.

As in the past the school will include periods devoted to craft work, recreation, song service and study periods. Rev. Babbitt states

## INTERIM COMMITTEE TO MEET IN SANTA BARBARA SEPT. 16

A meeting of the legislative Interim Committee on Revenue and Taxation has been called by its chairman, Assemblyman Alfred W. Robertson, to be held in the Supervisor's room of the Santa Barbara county courthouse on Friday, the 16th day of September, 1938.

The committee will take up matters concerning the state's revenue and taxation program for recommendation to the next January session of the California legislature. Among these matters will be the recommendation of the exemption of foods sold in restaurants from the sales tax as well as the exemption of medicines and medical supplies. They will also take up the question of reducing the sales tax and the income tax and will make recommendations as to decreasing and consolidating the present state commissions.

On account of the recent state ruling, the committee will meet entirely on its own expense.

## STURMER IN CONSTABLE RACE

Henry W. Sturmer, who is seeking to be elected to the office of constable, has been a resident of this district for the past eleven years and is thoroughly familiar with local conditions. He served in the United States Army during the world war and is now forty-three years of age.

Sturmer has a wife and two children, owns his home and is a taxpayer of the county. He is Commander of the Howland Shaw Russell Post of American Legion and is secretary of the board of Fire Commissioners for the C. U. H. S. Fire District.

They says a postman usually takes a holiday in the form of a walking tour. Crandall Mackey, local service station proprietor is no exception. He spent his weekend holiday, helping Roll Ogan put up a new water tower.

that there may also be a spelling bee but that such words as stymie and savvy will be barred.

Rona Jamerson is vacationing at a girls' camp south of Los Angeles.

The Lion's Club are ushering in September with a Ladies Night barbecue at the Solari-Schweizer ranch on September 1.

On Sept. 24, the grand master of the Masonic grand lodge of California will lay the corner stone of the new grammar school.

## FIRE THREATENS BUILDINGS NEAR SEASIDE STATION

Prompt discovery of a blaze back of the Seaside Service station yesterday afternoon by Art Koehler averted a serious fire in the business district. Several barrels of paper standing against a barn had caught fire and the barn was beginning to burn when the fire was discovered.

Koehler, aided by Les Carter, fire chief, extinguished the fire with a fire extinguisher and a garden hose and it was not necessary to call out the fire truck.

## DANCES AT BEACH TO BE RESUMED

At the request of many Carpinteria residents and summer visitors, C. S. Strickland, proprietor of the Carpinteria Beach Store, will hold three dances at the foot of Linden Avenue on Saturday, Aug. 27, Saturday, September 3, and on Labor Day, September 5th. No charge is made for the dances other than the cost of feeding nickles into the recording machine.

Strickland inaugurated the dances earlier in the season but discontinued them some time ago because parents permitted young children to attend the dances unaccompanied and because some of the young people became too boisterous and drove their cars in a reckless manner near the beach camp grounds.

## HIGHWAY PATROL OFFERS FREE CAR EXAMINATIONS

Carpinteria residents should take advantage of the free mechanical check up service being offered this week by the California Highway Patrol in Santa Barbara. The tests are being made on De la Guerra street, one block east of the State Highway and will continue until Saturday evening.

There is no chance of being given a ticket and if defects are discovered the driver is given a card listing equipment needing adjustment, repairing or replacement which he may have made at his local garage at his convenience.

## GUESTS FROM MANY STATES VISIT MOTOR LODGES

Cosmopolitan is a word usually associated with world famous restaurants, hotels and hot spots, but take it from Mr. Kenyon of the Carpinteria Motor Lodge, a motel takes second place to few of them. During the summer Mr. Kenyon has played host to guests from practically every state in the union. A few weeks ago, two young fellows dropped in from England. This week, Mr. Samuel Peabody, Rock Maple Farm, Groton, Massachusetts, is a visitor.

## Candidates for County Offices Waging Campaigns

Although only four County officials face competition in Tuesday's Primary the political pot has reached the boiling point within the past week, with several of the incumbent officials putting up determined fights to retain their offices.

Sheriff Ross is opposed by three candidates, Harry E. Fryer of Santa Maria, J. J. Carillo of Santa Barbara and James R. Anderson of Santa Barbara and latest indications are that this contest will find Ross and Fryer on the November ballot since the number of candidates on the ballot make it impossible to settle the issue at the primary unless Ross should poll a majority over the total votes of his three opponents and this is not believed likely since election returns eight years ago show that Ross polled only 3,000 votes more than did his opponent Ben Hoover.

The three other officials who are opposed will not have to run again in November since they each have only one opponent. It is generally believed that Yris Covarrubias will poll a large vote over her opponent for the office of Recorder, Charles W. Knott. Chas. Tomlinson, County Assessor, faces a little stiffer competition in the form of Wallace Blair, but it is believed that Tomlinson will retain his office by a good majority since Blair failed to poll an impressive vote when he ran for this office four years ago.

Judge A. B. Bigler of Superior Court, Department One, faces opposition from Leland M. Crawford, Santa Barbara attorney, who is basing his campaign on the fact that Judge Bigler is disqualified from hearing criminal cases because of relationship to the District attorney, Percy Heckendorf.

## FRANKLIN RALLY TO BE HELD TONIGHT

A friendly neighbor rally in behalf of the candidacy of Dr. Walter Scott Franklin for the Republican and Democratic nomination for the office of lieutenant governor will be held at Recreation Center in Santa Barbara this (Friday) evening at 8 o'clock. The rally for the popular eye specialist and former University of California professor will assume tri-county proportions, motoring parties from Ventura, and San Luis Obispo counties as well as from Carpinteria, Santa Maria, Goleta, Solvang, Lompoc and Santa Ynez in Santa Barbara county.

Charles F. Blackstock, former  
(Continued on page 12)

Persons familiar with county politics are of the opinion that Bigler will be returned to office by a safe majority because the majority of voters know that criminal cases are the exception in this county and that Bigler has made an unusually fine record in his handling of civil matters.

Assemblyman Alfred W. Robertson's unopposed on the Republican ticket and is not expected to have much competition from Frederick E. Draper.

In the First Township, Judge C. P. Moore of the Justice Court is unopposed for re-election but there are three candidates out for Constable, Henry Sturmer, Warren Tobey and C. A. Talmage, the incumbent. It is the general belief that there will be a run-off between two of these three candidates in the November election.

(Continued on page 12)

## Ideal Conditions in Sweden Outlined by Visitor

The keen, alert, 70-year-old retired business man of Uppsala, Sweden, leaned forward in his chair in the home of his son, David Safwenberg, local bank manager—and somehow or other you got the idea that Sweden is an amazing place.

He is Mr. C. A. Safwenberg, delegate for the Swedish Methodist-Episcopal church at the Tercentenary celebration held in early July of the first permanent settlement in the Delaware Valley of the Swedes.

Forty-seven years ago he opened a small grocery store in a huge group of buildings in Uppsala. Now he owns the buildings. His brother is a general in the Swedish army, and is on the personal council to King Gustave, so Mr. C. A. Safwenberg speaks with authority.

Mr. Safwenberg leans forward in his chair and tells you that there is no unemployment in Sweden. In fact, there is a shortage of laborers. There is no strife between labor and capital in Sweden.

A parliament of representatives from the various industries, businesses and trades irons out their differences.

You are told that wages are good; business is good; the people are happy and contented because they have found the secret of a happy and contented life is co-operation.

Mr. Safwenberg says that in Sweden a business man may run his business as a private concern or he may join a "cooperative" and run it in conjunction with other businesses of the same type as his own. Contrary to general opinion, 90 per cent of business in Sweden is private enterprise.

At present, Mr. Safwenberg says, there is a slight business recession, but it is almost imperceptible and "certainly" will not assume the proportions of a major business "depression."

War? Sweden has an army to be sure. In fact, every able-bodied man is required to take nine months of compulsory military training. But, says Mr. Safwenberg  
(Continued on page 12)



# THE CARPINTERIA CHRONICLE

READABLE REPRESENTATIVE RELIABLE

ANN WAYNFLETE . . . Owner and Publisher  
Bud Riley . . . Associate Editor and Adv. Mgr.

Published Friday with Coverage of Carpinteria  
Valley and Surrounding Territory

An Associate Publication of

**THE COUNTY LEDGER**

A Santa Barbara County Agricultural Weekly

Published every Thursday

115 E. COAST HIGHWAY TELEPHONE 4461  
CARPINTERIA, SANTA BARBARA COUNTY, CALIF.



Entered under the name of Carpinteria Chronicle as second-class matter, at the post office at Carpinteria, California, under the Act of March 3, 1879. Established March 26, 1933. Published weekly as "The Chronicle" from June 6, 1935, to October 5, 1935. Published daily as "The Chronicle" from Oct. 7, 1935, to Dec. 6, 1935. Determined a newspaper of general circulation (as defined by Section 4460 of the Political Code) by decree of the Superior Court of the State of California in and for the County of Santa Barbara, February 23, 1937.

SUBSCRIPTION \$2.50 PER YEAR IN ADVANCE

Advertising Rates on Application

## X MARKS THE SPOT

"X Marks the Spot" is frequently used to designate the place of a catastrophe, and unless the registered voters turn out in force, and use intelligence in casting their vote, the X's on the ballots may easily put California on the spot. It is not only a privilege of American citizens to vote but it is their duty and that duty should involve a careful study of the candidates, their past records and performances and the feasibility of the platforms they are offering to the voters.

All offices, both County and State may be divided roughly into three classes, Executive, Judicial and Law Enforcement. In choosing a candidate for either of the first two classes it should be remembered that age is not always a bar as to the candidate's ability. On the contrary, it may be an advantage for a man's usefulness in these positions increases with his experience. Also to be considered is the man's record, whether in private business or public office, for his actions in the past will be the best index to his future performance. If the man is in office and has a higher average of accomplishment than he has of errors charged against him, it might be far better to retain him in office than to risk replacing him with another candidate who may not be able to fulfill his campaign promises. However, if the man in office has willfully disregarded the rights of those who placed him in power and continues to ignore situations that should be remedied after they have been called to his attention he should be replaced by a candidate whose background and platform give assurance that he is capable of filling the office.

Qualifications for candidates for law enforcement offices do not differ materially from those mentioned above with the exception that age should be considered. Law enforcement requires vitality, and physical fitness as well as mental alertness combined with a thorough understanding of human nature.

Study the candidates between now and Tuesday and after due consideration go to your polling place and cast your ballot but use care that in placing your X you are not putting California in the position that is usually indicated by "X" and that is on the spot.

## The Churches

Carpinteria has a number of Churches, whose pastors and members will be glad to welcome you to their services.

### CHRISTIAN SCIENCE SOCIETY

Christian Science Society, Carpinteria, a branch of The Mother Church, The First Church of Christ, Scientist, in Boston, Mass., holds service every Sunday at 11 o'clock a. m., Sunday School at

9:45 o'clock. Mid-week meetings every Wednesday evening at 8 o'clock.

A reading room is maintained in the church building, open Tuesday afternoons (except holidays) from 2:30 to 4:30 o'clock.

The words of Micah: "Thou, Bethlehem Ephratah, though thou be little among the thousands of Judah, yet out of thee shall he come forth unto me that is to be ruler in Israel; whose goings forth have been from of old, from everlasting," are the Golden Text in the Lesson-Sermon on "Christ Jesus" on Sunday in all Churches of

## Letters to the Editor

The following letter has been given us for publication in the Carpinteria Chronicle and the County Ledger by Mr. James A. Lewis. We heartily approve of the contents of this letter and urge every resident to read it thoroughly and then do what they can to cooperate with Mr. Lewis.

An Open Letter to the Business Men and Others of Carpinteria, California.

You are as much interested, or should be, in my work—sweeping the streets—as I am. The best results cannot be obtained unless there is an understanding between us, and complete cooperation.

This work deserves more consideration than it sometimes gets. Since we discarded dusty and muddy streets we are slowly but surely becoming orderliness and cleanliness conscious; and the merchant that fails to take this into account suffers loss of trade. Maybe some people are influenced to buy only by quality goods at reasonable prices, but most people are influenced by neatness, cleanliness, orderliness and attractive arrangement also, both within and without the building. Desirable home-seekers are influenced by clean beautiful streets, yards and lots.

Also it is known that lean and orderly surroundings have a wholesome influence on character, particularly that of the young. It is a matter of record that our city slums give us many times their proportion the criminal and undesirable people.

At a little extra expense and a little extra effort on the part of every resident and property owner we could have a beautiful and attractive little town; and it would be worth many times what it costs.

My work is to gather the trash in the streets between the curbs and am not required to remove any trash that may be swept over the curb from yards, homes and business places. However because

Christ, Scientist.

Among the Bible selections in the Lesson-Sermon are these words of Jesus to his disciples, from Matthew: "Heal the sick, cleanse the lepers, raise the dead, cast out devils: freely ye have received, freely give. . . . He that receiveth you receiveth me, and he that receiveth me receiveth him that sent me. . . . And whosoever shall give to drink unto one of these little ones a cup of cold water only in the name of a disciple, verily I say unto you, he shall in no wise lose his reward."

A correlative passage from Science and Health with Key to the Scriptures," by Mary Baker Eddy, states: "Those who are willing to leave their nets or to cast them on the right side of Truth, have the opportunity now, as aforesaid, to learn and to practice Christian healing. The Scriptures contain it. The spiritual import of the Word imparts this power."

### THE CARPINTERIA COMMUNITY CHURCH

Rev. Deane F. Babbitt, Pastor.

Sunday, August 28, 1938

Church school at 9:45 a. m.;

Morning worship at 11 a. m. Dr. Henry T. Babcock of Los Angeles will preach. Theme, "Contentment," the fifth and last of a series of sermons on every day Christian virtues.

Youth Fellowship Meeting at 6:30 p. m. Subject: "The Heart of Religion." Leader, Marilyn Shepard. Host, Richard Houts.

The pastor, Mr. Babbitt has returned from his vacation and is preparing for the Vacation Church school opening at the Church Monday, August 29 at 9 a. m.

Public cordially invited to these services.

## State Primary Paramount

(Continued from page 1)

"boomed" at the Lion's Club luncheon in Santa Barbara or in the Fiesta Parade although he was riding alongside of McAdoo. The "Oil scandal," which strangely arose at such an opportune time, is also being used as a campaign cudgel against Merriam by the Hatfield forces.

Even at this late date we would hesitate to lay a bet as to the Republican nominee for Governor, but would just about put our money on the line that Olson will receive the Democratic nomination. Others entered on the Democratic ticket seem to have found themselves seriously handicapped by lack of funds at a time when they were most needed. O'Connor has been practically forced out of the running because promised funds did not materialize, but is still carrying on his campaign as best he can. In a radio address this week he challenged the effectiveness of the \$30.00 a week plan but pledged himself to work for a liberal and sound pension system for the aged if elected. Herbert C. Legg, also a candidate for the Democratic nomination, is advocating tax relief for owners of small homes and business and feels that a large number of California voters are realists and will not be taken in by some of the Utopian promises made by other candidates, but only the tallying of the vote Tuesday night will show whether he is correct in his belief.

Of equal importance to the race for Governor is the battle that

I desire a better looking town, and because I desire the cooperation of everybody I have gone over the curbs into the parkings, sidewalks and sometimes further to gather trash, and have cheerfully taken trash pushed over the curb when it was not too bulky. And I shall continue to do so as long as I get the hearty cooperation I am receiving at present. Trash cans will be placed at convenient places on the streets before school opens. If everyone will put his waste paper, fruit peelings, burned matches, cigar and cigarette stubs, and all other trash in these cans we will be on our way to a clean town. I expect to talk to all the children in the schools if I am permitted. I know the teachers will cooperate anyway.

Our vacant lots are a problem. Two of them have been cleaned up recently and I am sure owners of others will take action when they see we are in earnest about cleaning up the town. Would it not be well when leasing lots in or near town to provide that no weeds or grass be allowed to grow between the growing crop and the traveled street? Such contracts have been made here. Flowers in the parkways and on the borders of vacant lots would improve appearances wonderfully. We would be glad to get suggestions from the Garden Club and others.

We have many well kept homes, some of which are Mexican. Also the Womens Club grounds, the high school, the Legion building and grounds, and the Hotel front are worthy of mention. Later we will, I am sure, be able to add to this list the newly acquired grounds of the high school, the grammar school and the new lemon house grounds.

Would it be wise to hold an election every quarter to determine which location in town is in greatest need of improvement or cleaning up? One town does that with gratifying effects. A neglected, ugly place detracts from the neighboring well-kept places and is an injustice to the owners of these places.

Signed,  
Street Sweeper.

rages over the selection of a United States Senator from California. Democratic candidates are still engaged in a pitched battle and the Downey faction headed by Pierson M. Hall went to considerable expense to send out a mat of a full page which appeared in Tuesday's Examiner, denouncing McAdoo as a member of the Klu Klux Klan. Since no weekly paper would be so foolish as to give away such an amount of space to any candidate, Downey's headquarters would have received more benefit if this money had been used for a small ad in the weeklies. John W. Preston, another opponent of McAdoo, has conducted a conservative campaign and will undoubtedly receive a number from conservative Democrats who do not like McAdoo.

The Republican race for the nomination for U. S. Senator has narrowed to Ray L. Riley, state railroad commissioner, and Philip Bancroft, Contra Costa farmer. In a recent release Riley appeals to the Republicans of the State to get busy and nominate a candidate that can defeat McAdoo and apparently feels that he is the candidate. However, Bancroft seems to be of the opinion that he, too, can defeat McAdoo. Riley probably has the edge over Bancroft, since he has held public positions in the state for a number of years, but Bancroft's followers have increased in numbers during the past few weeks, although he was comparatively unknown until he entered the campaign.

Getting back to State offices, Dr. Walter Scott Franklin has constantly gained in popularity and will probably defeat James Rolph, III, his most dangerous opponent.

Releases received from Rolph to date are limited to his announcement and two post cards, one from the extreme northern end of the state and the other from the extreme southern end. Senator Jerrald L. Seawell is also in the running and has been endorsed by a prominent group of insurance men. As far as we can learn from releases received John M. Burnett seems to be the favorite for the Democratic nomination for this position.

Attention is focused on the primary election to be held on Tuesday and general opinion seems to indicate that it will bring out the heaviest vote ever to be cast in a primary election in the state.

To those registered as Republicans the list of candidates for State offices, with one or two exceptions, will not be so confusing as to those registered as Democrats who will find themselves confronted with a long list of candidates for practically every office. Five candidates for Governor appear on the Republican ballot, Frank F. Merriam, incumbent, George J. Hatfield, Francis Michael O'Connor, Raymond Haight and S. S. Lemyel while the Democrats will have their choice of eight candidates, John F. Dockweiler, Raymond Haight, Herbert C. Legg, Daniel C. Murphy, William H. Neblett, J. F. T. O'Connor, Culbert L. Olson and Teodoro Antonio Tomasini. Progressives will have their choice of Haight, Olson or William E. Riker.

For Lieutenant-governor, Republicans will find a wider range of choice since there are eight candidates for this office, including Santa Barbara County's candidate, Dr. Walter Scott Franklin. Democrats face a rather puzzling array of candidates for this office and will find fourteen names on their ballots, and Progressives will find four.

Only one Republican is seeking the office of Secretary of State and that is Frank C. Jordan, incumbent, but there are six Democrats, one prohibitionist, and one

(Continued on page 11)



**OCTOBER FIRST DEADLINE FOR EMPLOYERS**

If you are an employer of not less than four employees engaged in industry or commerce (agriculture excepted), you will be subject to penalty if you do not register with the State Department of Employment to protect your employees on job insurance, under the Unemployment Compensation phase of the Social Security Act.

"October first is the deadline. We appreciate that most unregistered employers do not desire to evade the law, but simply are unfamiliar with it, as the four-to-seven group did not come under job insurance until this year. There are fifteen thousand employers who haven't yet registered, and we urge them to do it now, because their registration has to be fully checked by October first—that is the date benefits become payable to unemployed workers in this group. These seventy-five thousand employees must be taken care of on time."

That is the statement of James L. Matthews, Chairman of the Unemployment Reserves Commission, who adds:

"Employers should contact the nearest office of the California State Employment Service, or district headquarters of the Department of Employment in the Chamber of Commerce Building, Los Angeles, for forms on which to register."

\* \* \* \* \*  
 \* **Behind The Scenes In** \*  
 \* **American Business** \*  
 \* \* \* \* \*

By John Craddock

HERE AND THERE—If every American ate one more slice of bread daily farmers could sell 50,000,000 more bushels of wheat a year. . . There are 15,240,000 work animals on U. S. farms, or approximately 2.2 per farm. . . Hot coffee is served in 96.4 per cent of American homes, hot tea in 87.5 per cent. . . Chain stores pay one billion, two hundred million dollars annually in wages and salaries, with the average weekly wage for full-time employees amounting to \$25.89. . . From 1915 to 1936 the birth rate in the U. S. has dropped from 25.1 per 1,000 population to only 16.6, a decline of

(Political Advertisement)

LELAND CRAWFORD



CANDIDATE FOR JUDGE SUPERIOR COURT DEPARTMENT I Election August 30th

one-third. WASHINGTON—The new Civil Aeronautics Authority begins to function here this week. Airline executives are looking for this agency to help iron out some of the problems confronting their industry. Though the airlines have experienced an amazing traffic

growth, they still serve only a relatively small percentage of the people who travel around the country every day. Last year, for example, while the airlines carried 1,100,000 passengers, the railroads transported 497,300,000. Much larger planes than the present 21-passenger ships in general

use on major airlines are now available. The new Douglas DC-4 now undergoing test flights on the west coast can carry 40 passengers. It is the world's largest land transport plane, having a wing spread of 135 feet. Much of its equipment too qualifies as the world's "largest." Its tires, for in-

stance, built by the B. F. Goodrich Company, stand five feet, five inches, weigh 360 pounds each and contain 45 miles of tire cord. If traffic can be boosted sufficiently to warrant the use of these larger planes, real operating economies probably could be effected by the airlines.

FOR NATIONALLY-ADVERTISED BRANDS  
**Van's**

116 W. Coast Highway, Carpinteria, California

Phone 238

GROCERY SPECIALS FOR

Thursday, Friday and Saturday—

August 25-26-27

OPEN SUNDAYS

King City  
**Pink Beans** 10 lbs. 53c

Purity  
**FLOUR** 24 1-2 lbs. 55c

COFFEE, Ben Hur, Red Label, 1 lb. 26 1/2c  
 BLACK TEA, Ben Hur, 1/4 lb. 19c  
 Heinz Strained Baby Foods, 4 1/2 oz., 2 for 15c  
 LUX FLAKES, 5 oz. 8 1/2c  
 LUX FLAKES, 12 1/2 oz. 20c  
 RINSO, 8 oz. 08c  
 RINSO, 22 1/2 oz. 20c  
 SPRY SHORTENING, 1 lb. 18 1/2c  
 SPRY SHORTENING, 3 lb. 51c

Blue Ribbon Solids, per lb.  
**Butter** 30c  
**TILLAMOCK CHEESE** lb. 21c  
 PETER PAN SALMON 1 lb. 10c  
 WELCH GRAPE JUICE, pts. 20c  
 WELCH GRAPE JUICE, qts. 38c  
 GOLD MEDAL FLOUR, 9.8 lbs. 41c  
 GOLD MEDAL FLOUR, 4.9 lb. 22c  
 GOLD MEDAL WHEATIES, 8 oz. 11c

**PRIDE O' WEST COFFEE, 1 lb. 12 1/2c**

Sperry Pancake & Waffle Flour, 14 oz. 09c  
 Sperry Wheat Hearts, 14 oz. 12c  
 Sperry Pancake & Waffle Flour, 28 oz. 17c  
 Sperry Wheat Hearts, 28 oz. 21c  
 BISQUICK, 40 oz. 28c

S & W COFFEE, 1 lb. 26c  
 SUGAR, Pure Cane, 10 lb cloth bag 51c  
 Zee Toilet Tissue, Ivory or tinted, per roll 04c  
 Ariz-Sweet Grapefruit juice, NO. 2 can 07c  
 BARTLETT PEARS, Del Monte, No. 2 1/2 15c

**PEACHES DEL MONTE Sliced or Halves 2 1/2 can 12c**

Del Monte Early Garden Asparagus, No. 2 can, per can 17c  
 Green Giant Peas, new pack, 17 oz. 13 1/2c  
 Del Monte Tomato Juice, No. 2 can 07c

Campfire Marshmallows, 1 lb. 14c  
 Feature Sodas or Grahams, 1 lb. 09c  
 Pabst-ett Cheese (Std. or Pimiento) 6 1/2 oz. for 13 1/2c

**Sliced Pineapple Del Monte or Libby No. 1 1/4 Can 8 1/2c**

Libby Corned Beef Hash, No. 2 can 15c  
 Catalina Concord Grape Jelly, 2 lb. 19c  
 ROYAL DESSERTS, 3 1/4 oz. pkg. 3 for 14c  
 Bread and Butter Pickles, reg. size 14c  
 CERTO, 8 oz. 19c  
 Del Monte Tomato Sauce, 8 oz. 3 for 11c  
 POST TOASTIES, 8 oz. 06c

SHREDDED WHEAT, 12 oz. 11 1/2c  
 COCOA COLA, 5c bottles, 6 for 25c (Plus deposit)  
 SEVEN-UP, 5c bottles, 6 for 25c (Plus deposit)  
 Canada Dry Ginger Ale, 12 oz. 3 for 25c (Plus deposit)

Rodeo **BEER** 4 STEINIES BOTTLES Plus Deposit 25c  
 Seal Nut **OLEO**, lb. 11 1/2c

(Sales Tax will be added to quoted prices on taxable items)



# Administration Leaders Endorse Alfred J. Elliott

TULARE—Endorsed by national leaders of the Democratic administration and standing on a broad record of legislative achievement for public welfare, Congressman A. J. Elliott of the Tenth District is this week bringing to a close his campaign for renomination on the Democratic ballot at the August 30 primary election.

In office only slightly more than a year, older Congressmen consider Elliott's record for legislation and congressional activity beneficial to his constituents one of the most remarkable in recent times. Besides his duties as chairman of the disposition of executive papers committee and appointments as a member of committees on public buildings and grounds, public lands and roads, Congressman Elliott was an active worker in support of President Roosevelt's general program, introduced five measures under his own name and actively supported or opposed scores of bills in committee or on floor which were for or against the best interest of the people in his district.

Briefly, here are the highlights in his congressional record:

Supported passage of the following important administration measures sponsored by President Roosevelt Relief—lending and spending program, PWA, WPA; revenue bill, farm program, wages and hours legislation, national defense program, federal housing and slum clearance, civil aeronautics, departmental appropriations.

Supported legislation for labor, farmers, general welfare, flood control, pure foods and drugs, postal employes, unemployment compensation, highway-aid funds, CCC camps, rural electrification, veterans and dependents, Central Valley Water Project, reclamation, low farm interest rates, dairy products, railroad employes compensation.

Introduced measures to protect products of American farmers and labors in American markets from competition of cheap products of foreign production. To earmark payments of workers to the Social Security fund whereby money will be credited to their account for unemployment and old age security benefits. To control and conserve waters of coastal and valley rivers. To provide excise tax on importation of eggs and egg products. To increase California

(Political Advertisement)

cotton acreage for 1938 and Secretary Wallace attributes the additional 100,000 cotton acres granted California to Elliott's activity.

Successfully worked to prevent any change in California's oil depletion program. For the continuation of federal aid to California's state highway system. To protect California's tide lands.

That his effective work in behalf of the Democratic administration was highly appreciated is shown by letters of direct endorsement from Speaker Wm. B. Bankhead of the House and Democratic majority leader Sam Rayburn, the two men whom President Roosevelt depends upon to carry out his legislative program.

In addition to endorsement of party leaders, Congressman Elliott has been personally endorsed by President William Green of the American Federation of Labor, by Edward Vandeleur, secretary of the California State Federation of Labor; by Dr. Francis Townsend and the National Townsend party, by Chairman Marvin Jones of the agricultural committee and many other important groups.

## ASSESSOR VISITS CATTLE RANCHES

Last week Assessor Tomlinson spent a full day visiting seven ranches with the cattlemen and dairy men of the county. Louis H. Richford, extension specialist in animal husbandry was the main speaker of the day. About 70 men and 4-H club members attended.

Arriving at the Ted Chamberlain ranch at 9:00 A. M. where ranchmen were rounding up 200

(Political Advertisement)

Retain



### MERRIAM

A Good Governor  
For All the People

Hear Him Report  
to You in Person

RADIO BROADCASTS

Monday, August 29—Columbia network 7 to 7:15 p.m.

Monday, August 29—Don Lee network 8:45 to 9:00 p.m.

Retain  
**WM. GIBBS  
McADOO**



### U. S. SENATOR

"Your retirement from the Senate would be a distinct loss to the public—"  
—FRANKLIN D. ROOSEVELT

There Is No Substitute  
for Experience

(Political Advertisement)

Vote For  
Dr. Walter Scott

## FRANKLIN

—for—

### Lieutenant Governor

A Practical Man for... A Practical Job!

(Political Advertisement)

## YRIS COVARRUBIAS

(INCUMBENT)

for

### Recorder

head of yearling heifers bringing them in to breakfast. This consisted of pure cane molasses, not different from what we have on our hot cakes. He saw no flap jacks, however, but there was one and quarter pounds of molasses for each feeder in 24 troughs, each 12 feet long.

The cattle eating from the regular high troughs would get molasses on their lower lip or chin and since they could not lick their lower lip with their tongue as they did the upper lip, the molasses was wasted. Troughs built flat on the ground avoided this loss. Feeding concentrates in this way reminded one of the French queen who, when told her people had no bread and were starving, replied if they have no bread feed them cake. The cattle after grazing a few hours were given their lunch, same being a pound of cotton seed oil cake. Then in the evening for their dinner they were given a certain portion of rolled barley.

This scientific feeding to provide proper vitamins and produce the best of meat costs 5 1/4 cents per day per head. Beet molasses was found to be cheaper, but the cattle after eating cane would not eat the beet till starved to it.

At the Archie Hunt ranch dairy pastures were studied.

At the Earl Jensen ranch young feeders were viewed.

Fine blooded stock were shown at the E. S. Pillsbury place.

Seeding of pastures was discussed and various pastures viewed at the Owen Hollister ranch.

(Political Advertisement)

# ELECT



## PHIL BANCROFT

(REPUBLICAN)

### CANDIDATE FOR U. S. SENATOR

Tell Your Friends to  
Hear Him

MONDAY NIGHT  
August 29th, 9:30 P. M.

STATION  
**KFI**

(NBC Red) 640 Kilocycles

(Political Advertisement)

Hundreds of cattle at the J. J. Hollister ranch in the Salsipuedes were corralled. Over 3000 had already been inoculated and tested with practically none tubercular.

SOFAS GOING UP—And chairs too. For reliable reports indicate that shortly after Labor day furniture dealers plan to advance prices from five to 10 per cent. The reason is that the cost of lumber and other raw materials has been going up during the last few months and manufacturers are finding it difficult to supply wholesalers and retailers with fur-

niture at former prices. If the expected increases take effect, furniture prices would be restored to approximately the level prevailing last year. The furniture industry has not suffered to the same extent as others during the business downswing of the last 12 months. Present estimates are that total sales in 1938 may fall only five per cent below the 1937 volume of \$500,000,000. Such a figure indicates that America spends around \$16 per family on furniture every year.

Chronicle Want Ads bring results.

Now you can add beauty to every room with these smart and modern Venetian blinds. They are so practical, too, in controlling sunlight and ventilation. And because we want you to have the very finest, we offer only NATIONAL blinds. They are made of highest quality to give you many years of usefulness. Let us show you the many superior features, and the many lovely colors in which NATIONAL blinds are available. Estimates gladly given—no obligation.

**National Venetian Blinds**

# FORD'S

Affiliated Ben Franklin Stores  
700 LINDEN AVE. PH. 3891  
Carpinteria, Calif.

You can afford  
to trade at  
Ford's.

### Save Mon.---More Fun

With a

## MOTOR TUNE-UP

For best results your motor must be in perfect tune. You'll get greater operating satisfaction and save as much as 20 to 25 per cent in gas and oil consumption.

No shop in the valley is better equipped to properly care for motor troubles. Drive in. Let us go over these points for peak motor performance.

### THE ENGINE

Adjust valves, Check timing. Synchronize cam angle breaker points. Clean and set spark plugs. Check battery and wiring.

### FOR CARBURETOR

Clean, adjust and set carburetor for proper operation. The exhaust analyzer tells us just what to do.

HUMPHREY MOTOR CO

SALES  
SERVICE



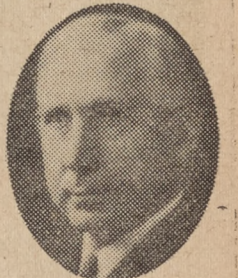
Carpinteria  
Phone 217

(Political Advertisement)

## Democrats of California!

At the Primary of August 30, vote for and nominate the only Democratic candidate for United States Senator who can be elected when nominated.

# JOHN W. PRESTON



Life-long Democrat; for forty years a resident of California; 30 years public service; personal appointee of President Roosevelt; the man who knows the state and its needs. California will continue to select her own representative at Washington.

DEAR MAC ADIEU  
AND UPSIDE DOWNEY, TOO!



STATE CLUB LEADERS TO ACT AS HOSTESSES



Pictured above, left to right, are Mrs. Duncan Stewart Robinson, of Rio Vista, State President of California Federation of Women's Clubs; Mrs. Alice M. Baker, President of San Francisco County Federation of Women's Clubs; Mrs. Joseph I. Lawless, Junior Past President of the California Club, San Francisco; Miss Katharine Donohoe, President, Women's City Club of San Francisco; Mrs. Clarence P. Cuneo, President of the Merry League of the Western Women's Club of San Francisco. Under the chairmanship of Mrs. George T. Cameron of San Francisco, these leaders with over seventy other representative women constitute the Women's Board of the California State Commission.

NO LIQUOR MAY BE SOLD ON TUESDAY BETWEEN 6 AM-7 PM

Warning to all liquor licensees to obey the law forbidding the sale of alcoholic beverages on election day is given by William G. Bonelli, member of the State Board of Equalization from this district, who urges their full cooperation in this respect on August 30 during the primary election.

Not only is the sale of liquor banned when the polls are open, it cannot be given away or furnished.

Section 59 of the Alcoholic Beverage Control Act reads: "Every on-sale or off-sale licensee who sells, gives away or furnishes any alcoholic beverage in any election district or precinct in any county in the state where an election is in progress, during the hours when by law the polls are required to be kept open for voting shall be guilty of a misdemeanor."

On August 30 polls throughout the state will be open from 6 a. m. until 7 p. m.

Your printing orders will be well done and appreciated at The Chronicle office.

FISHING AT BIG PINE REPORTED GOOD

From Glacier Lodge, Big Pine, comes the following information of interest to anglers, as secured by the Outing Department of the National Automobile Club. Fishing good two miles above the Lodge. Big Pine Creek water is high but clear. Fishing in the lakes at the Upper Camp is good with many trout being taken on flies, worms and salmon eggs. Number 12 grey hackle, mosquitoes, blue bottle and royal coachman are the favored flies. Largest fish caught in these lakes this season was a 7½ pound Loch Leven. All roads and trails are reported in good condition.

(Political Advertisement)

VOTE FOR **Harry E. FRYER** FOR SHERIFF at the AUGUST PRIMARIES

(Political Advertisement)

RE-ELECT



L. A. GAMMILL County Treasurer (INCUMBENT)

ENROLLMENT OPENS MONDAY AT VENTURA JAYSEE

Ventura Junior College at 9:00 a. m. Monday when approximately 1,000 students enroll for the 1938-39 school year, jaysee authorities announced today.

Regular classes will start Tuesday, September 6, after a special opening assembly in the campus auditorium at which junior college and student officials will welcome the returning student body.

Complete information on registration procedure and courses of study available has been released in a pre-school edition of the Pirate Press, student newspaper. Copies have been mailed to all prospective students.

Four-Day Registration

Registration will continue through four days, August 29—September 1, beginning each day at 8:00 a. m. with the exception of Monday, August 29, when enrollment commences at 9:00 a. m.

To make procedure more efficient all around, students are urged to report at the time indicated for them: Fourteenth year students on Monday, thirteenth year students on Tuesday, twelfth year students on Wednesday and eleventh year students on Thursday. This recom-

mendation was offered by T. J. Anderson, registrar, who is directing the annual fall enrollment.

Prospective students are advised against late registration, Anderson suggested, except under favorable circumstances. Classes will in many cases be filled, he explained, and a student may not be able to enroll in all the section he prefers.

Of special interest to entering thirteenth graders are the English and aptitude examinations which will be conducted in the library from 9:00 a. m. Monday, August 29.

Want Ads in The Chronicle bring results.

Chronicle Want Ads bring results.

COMPLIMENTS OF



ALBERT T. EAVES County Auditor

CARPINTERIA REALTY COMPANY DEPENDABLE

Insurance

111 East Coast Highway Phone 3142 Carpinteria

We represent a number of the oldest and strongest companies in the world.

LOOK BEAUTIFUL

Have a hairdress . . . a new permanent . . . a new hair trim . . . for that new hat . . . and the new clothes you're so proud of!

Permanents . . . \$2.50 up Any Style



LILLIAN'S BEAUTY SHOP

Phone 3533 CARPINTERIA 912 Linden Ave.

POLITICAL ADVERTISEMENT

The Republican Party Is at the Cross-Roads

Upon its choice in the August 30th primary will rest the fate of the party. If it nominates a reactionary governor, the Republican party will go down to defeat before a Democratic landslide, which will bury the entire Republican ticket.

Republicans Let's Go Ahead With HATFIELD!

In fact the Republican party in California has no other choice. Its only hope of victory in November is to nominate George J. Hatfield—a modern, progressive candidate, who will build party responsibility rather than a personal political machine.



GEORGE J. HATFIELD

REPUBLICANS, Vote for the One Man Who as the party's gubernatorial standard-bearer can lead you to victory.

GEORGE HATFIELD will solve the relief problem by creating jobs.

HE will reduce the state's exorbitant tax load by eliminating governmental inefficiency and extravagance.

He will solve labor troubles by mediation.

HE WILL BUILD CALIFORNIA

(By the Republican Hatfield-for-Governor Committee)

Leibler's Hi-Way Liquor Shop

CARPINTERIA, CALIF. PHONE 248 Phone Orders Filled

BOTTLED BEER  
Budweiser ..... 2 for 25c  
Pabst Blue Ribbon 2 for 25c  
COORS, 12-oz .... 2 for 25c  
Miller's High Life ..... 15c

CANNED BEER  
Lucky Lager - El Rey  
Acme - Rainier - Eastside  
3 for . . 29c

Est. 1830—Bellow's Private Stock, Bourbon . . . Qt. \$2.32

Alta Beer, Grace Bros. .... Full Quart 15c

Italian Swiss Colony Wines in bulk  
SWEET WINES, gal .....\$1.35  
SAUTERNE, gal. ....\$1.09  
BURGUNDY, gal .....\$1.00  
CLARET, gal .....\$1.00

Fine California Wines in bulk  
SWEET WINES, gal .....95c  
DRY WINES, gal. ....60c  
DRY MUSCATEL, gal. .90c

(Sales Tax will be added to quoted prices on taxable items)



## \$1,000,000 Improvement Program Reflects Beauty at County Fair



With fourteen new buildings, two of them huge steel and concrete exhibit structures and with an entire rearrangement of the grounds, a new and still more beautiful Los Angeles County Fair will be presented to the 750,000 visitors during the 17 days between Sept. 16 and Oct. 2. Over \$1,000,000 is being spent in a major improvement program extending over the entire 300 acres of the exposition park.

### PLANT QUARANTINE STATIONS HALT INFLUX OF PESTS

SACRAMENTO—The large increase of tourist travel into California during the vacation months means more and increasingly important activity for inspectors at the state's border plant quarantine stations, a report prepared by A. C. Fleury, Chief of the Plant Quarantine Bureau of the State Department of Agriculture showed today. At plant quarantine stations in July some 138,398 automobiles, trucks and stages, carrying 406,969 passengers were inspected as they entered the state, the report indicated.

From the vehicles and baggage of the 406,969 passengers the quarantine inspectors took 931 lots of plants or plant products infested with pests which, if intro-

duced into California, might prove a serious menace to one or many of California's nearly 200 commercial crops.

The 931 interceptions represented an increase of 200 per cent in the number of species involved as compared with the species intercepted in June of this year.

The report shows:

Fresh cherries from the Pacific Northwest, intercepted at various northern border stations, contained 183 lots of cherry fruit fly. The Oriental fruit moth was intercepted in apples from Illinois and in peaches from Iowa and North Carolina. The lesser apple worm was taken once in apples from Indiana and 7 larvae of the squash vine borer were taken from a box of trinkets packed in Ohio.

Important interceptions of scarab beetles not found in California included five lots of Japanese beetle at the Yermo station, found

mostly in baggage from New Jersey and Massachusetts automo-

### IN AIR EPIC

Tex Rankin, known as international aerial acrobatic champion, today was awarded a role in Paramount's cavalcade of the air in Technicolor, "Men With Wings," by William A. Wellman, producer-director.

Twenty miles of storm sewer pipe will be installed at a cost of \$200,000 on Treasure Island for the Golden Gate International Exposition, which opens next February 18.

biles. White grubs were taken from soil surrounding plants in cars from Indiana, Michigan and Minnesota. Other important beetle interceptions included 4 lots of Colorado potato beetle intercepted at the Yermo station and one lot of living adults and larvae of a powder post beetle on elm logs brought into California from New York.

Weevil interceptions of special importance to California Agriculture included larvae of the sweet potato weevil in sweet potatoes from Virginia, one lot of nut weevil in pecans from Texas, two in hickory nuts from Iowa and Illinois and 16 interceptions of plum curculio in peaches and apples from eastern states.

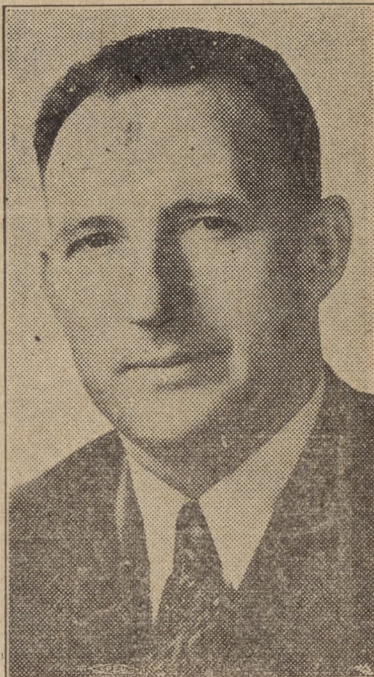
The citrus white fly was intercepted at Blythe on gardenia plants from Louisiana and cocoon scale was taken at both the Blythe and Yermo stations during the month.

### HAS HUGE PET

Betty Grable, blonde star of Paramount's "Campus Confessions," has a Great Dane dog that weighs 175 pounds and tries to crawl in Betty's lap. Miss Grable weighs 110 pounds.

(Political Advertisement)

## RETAIN



WILLIAM G.

# BONELLI

YOUR

## DISTRICT MEMBER

OF THE

## STATE BOARD

OF

## EQUALIZATION

Don't gamble with your vote when public morals are at stake.

## BONELLI

SAYS:

- KEEP** liquor away from minors.
- KEEP** favoritism out of tax administration.
- KEEP** down the number of liquor licenses.
- KEEP** liquor away from churches, schools, playgrounds and residential areas.

## BONELLI

is Endorsed By

- National Democratic Club of Calif.
- So. Calif. Restaurant Assn.
- So. Calif. Druggists Assn.
- So. Calif. Hotel Assn.
- Calif. Retail Grocers and Merchants Assn.
- 86th Assembly Dist. Democratic Club.
- Southwest Community Club.
- Democratic Voters Alliance.
- 16th Congressional Dist. Democratic Club.
- Harbor Dist. Democratic Club.
- Bernice Johnson's Ticket.
- 85th Assembly Dist. Democratic Committee.
- People's Protective Assn.
- 13th Progressive Clubs.
- Disabled Veterans of the World War.
- Allied Automotive Industries of Calif.
- So. Calif. Hardware Dealers Assn.
- Food Research Council and Meat Dealers of Calif.
- French Colony and LaFayette Club.
- Los Angeles Newsboys Club.
- San Diego Hotel Assn.
- Federation of Retail Trades.
- So. Calif. Business Men's Assn.
- Round-Robin Co-Operative Civic League.
- Harbor Dist. Cafe Owners Assn.
- Chauffeurs, Sales Drivers and Helpers Union, Local No. 572.
- Los Angeles Republican Assembly.
- West Olympic Improvement Assn.
- Manufacturing and Industries Club of Los Angeles.
- Retail Petroleum Dealers Assn.
- Motion Picture Progressive League.

and many other organizations. Thousands of ministers, business men, labor leaders, teachers and fathers and mothers in all walks of life are supporting WILLIAM G. BONELLI and his policy of

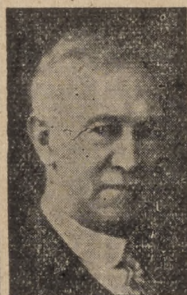
## STRICT LIQUOR LAW ENFORCEMENT

(Political Advertisement)

RE-ELECT

### Chas. S. Tomlinson

County Assessor



Political party lines were so detrimental to public service in the county offices that they were abolished years ago by law. Do not let your party affiliations help revive this old, condemned system. Vote for the best qualified candidate.

Primary Aug. 30, 1938

*His Record Speaks for Itself*

(Political Advertisement)

- - JUDGE - -

## A. B. BIGLER

Incumbent

CANDIDATE FOR JUDGE  
SUPERIOR COURT

(Political Advertisement)

Re-elect

Your Assemblyman

## Alfred W. Robertson

(DEMOCRATIC)

For four years a perfect record in support of Agriculture.

## EVERY BANKING SERVICE

ESCROWS,  
SAFE DEPOSIT

TITLE II, N. H. A.  
HOME LOANS

Loans made promptly, accurately and at lowest cost.

CARPINTERIA BRANCH  
SECURITY-FIRST NATIONAL BANK OF LOS ANGELES  
Coast Highway and Linden Avenue  
D. SAFWENBERG, Manager  
Banking Hours, 10 to 3. Saturday 9 to 12

**MONTE VISTA DAIRY**  
PHONE 3441 ~ CARPINTERIA, CAL.



# More Liberty Disappears

By HARLEY L. LUTZ  
Professor of Public Finance, Princeton University

When the laws for the taxation of incomes and estates were amended, in 1934, so as to deny tax exemption for contributions and gifts to religious, educational and charitable organizations, if such organizations were engaged, in substantial degree, in propaganda or other attempts to influence legislation, the door was opened wide for the exercise of arbitrary administrative judgment. The law



gave no definition of "propaganda" and the tax regulations have passed over the whole question of what constitutes an attempt to influence legislation.

It would seem as if there were need for some kind of distinction between proper and improper ways of influencing legislation. To deny that independent foundations and research agencies shall utilize their resources for the advancement of the general well being through the publication of findings which may contribute to that result by an improvement of legislation is to assert that Congress possesses, in its membership, all wisdom and all knowledge as to what is best for the country. Yet the effect of the tax law is to discourage gifts to such organizations, once the tax authorities have found them guilty of influencing legislation. For the prospective donors are not allowed to deduct such gifts in making tax returns.

Since the whole question of what constitutes an attempt to influence legislation is left to the discretion of the tax officials, there are vast possibilities of favoring or of penalizing various institutions. Pressure of this sort becomes an effective way of muzzling economic and social research.

Those who put this particular amendment into the tax laws either overlooked the possibility that some agencies may be capable of contrib-

uting to the improvement of the quality of our legislation in perfectly proper ways, or else they were willing to lump all fact-finding and research institutions together with the lobbyists, on the assumption that any activity which tended to influence legislation is subversive propaganda. The most casual examination of the flood of bills passed by federal and state legislatures every year would reveal that there is an enormous need of improvement, in both the form and the quality of these enactments. Instead of refusing to allow deduction, for tax purposes, of contributions to the agencies which are capable of promoting legislative improvement, the tax laws should be changed so as to stimulate and encourage the increase of funds available for such a worthy purpose.

The distinction between propaganda, as the term is popularly understood, and the scientific attitude is clear enough. The propagandist is an advocate of a particular plan, system or scheme. He admits only its real or alleged good points and ignores its defects. Or he stresses only the defects of the plan he is attacking without recognizing its possible good qualities. That is, he takes a wholly one-sided view, and he will use any means to gain his end.

On the one hand, the scientific attitude is one which weighs all of the evidence, considers all of the facts, examines the case from every side. A finding thus arrived at may favor or reject a particular scheme, but the announcement of such a finding, supported by the pros and cons of the evidence, is not propaganda.

The difference is like that which exists between the lawyer who is concerned with winning his client's case, and who will suppress, if possible, all evidence that does not promote this result, and the judge, who is concerned with the truth of the issue and not with the victory of one litigant or the other. The lawyer's argument at the trial may be propaganda, but the judge's decision is not. As the tax law now stands, it is as if Congress had recognized no distinction at all between the methods and aims of the trial lawyer and those of the judge on the bench.

## DOVE SEASON OPENS NEXT WEEK

Open season on doves this year begins September 1 and continues until October 15 according to the Outing Department of the National Automobile Club. Hunting will be allowed from 7 a. m. until sunset, with a fifteen bird limit and in possession; 30 per week. Best shooting generally is from 7 a. m. to about 9 a. m. when birds are feeding in the stubble fields or drinking at water holes and in the afternoon when they repeat this routine. The Club reports more doves are available this year than last.

## TALENT SCOUT

Robert Cobb, popular Hollywood restaurateur, today placed his actor protegee, Wen Wright, champion cowboy of Livingston, Mont., in "The Sunset Trail," Harry Sherman's "Hopalong Cassidy" production starring William Boyd.

## DOLLS ARE MODELS

Grancisca Gaal's collection of Slavic dolls became the models for costumes in "Paris Honeymoon," her current picture at Paramount, in which she is cast opposite Bing Crosby, it was revealed today.

## GOVERNOR MERRIAM ISSUES STATE FAIR PROCLAMATION

Governor Frank F. Merriam, in an official proclamation naming the days of September 2 thru 11 as "California State Fair Exposition Period," cordially invites the people of California to set aside the dates for their vacation and visit the exposition.

"The California State Fair and Exposition is a great agricultural and industrial exposition, which serves not only as a dramatic symbol of the continued progress and achievement of the six million people in California, but as the mecca for the people of the Western part of the United States.

"It brings together the inspiring

evidence of California's development in agriculture, industry, commerce, education and art.

"I cordially invite each of you to set aside the dates for your vacation in order that you might be privileged to visit the 1938 California State Fair.

## Sparklets

California's Finest Drinking Water

Phone S.B. 26787  
900 N. Milpas

Santa Barbara, California

## STUART McMARTIN

Real Estate Broker .. General Insurance

Representing highest rated companies for  
**LIFE — FIRE — AUTO — ACCIDENT**  
and **LIABILITY INSURANCE**

"It Pays to Have the Best"

FURBY BLDG., 901 LINDEN AVE. Ph. 3132; Res. Ph. 223

## HIGH SIERRA FISHING IS IMPROVING

A detailed fishing report of the High Sierra country, received by the Outing Department of the National Automobile Club from the Mt. Whitney Pack Trains and Tunnel Air Camp, shows fly fishing

to be rapidly improving in the lakes. For stream fishing, possible limits of fish of twelve inches or more from the upper Kern River, is reported. Trail information shows Army Pass still closed and Whitney Pass scheduled to open about August 23.

(Political Advertisement)

If You Value Your Right to Vote...  
DON'T WASTE THAT VOTE!

VOTE FOR

## The Man Who Can Win!

VOTE FOR

- A Californian who believes in California.
- The only candidate who publicly and straightforwardly has announced his stand on every social, economic and governmental problem confronting California.

THE MAN PLEDGED TO...

- Liberalism—not Radicalism.
- A thorough governmental housecleaning; elimination of the "spoils" system, political racketeering and governmental extravagance.
- Reduction of the State Sales Tax and Income Tax.
- Industrial Peace by Mediation.

VOTE FOR

## GEORGE J. HATFIELD

REPUBLICAN FOR  
GOVERNOR



Repair Trees and Shrubs—  
Restore Gophered Roots  
with

## GROBARK

Unexcelled for Pruning,  
Budding and Grafting

For Sale on Money Back Guarantee at all Seed and Hardware Stores, Nurseries and Orchardist Supply Houses.



ACT NOW AND SAVE 10%!

## Summer Discount Sale of GAS FURNACES

Closes August 31st

1. Special discount—10% OFF
2. No down payment required
3. No monthly payments till October
4. Terms as low as \$4.39 a month

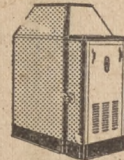
(Title I, National Housing Act)

Soon it will be too late to profit by this sale. It's important to place your order right away. No down payment is required, and you need not make a monthly payment till October.

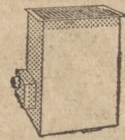
Remember, when cold weather comes you'll want the healthful, economical warmth of adequate gas heating equipment. Why not discuss your heating needs with a dealer or the gas company, today?

SOUTHERN COUNTIES GAS COMPANY

SALE INCLUDES THESE APPLIANCES. They are the really ideal means for keeping the home healthful and comfortable. They are vented. Fresh air is drawn in, warmed and circulated.



UNIT FURNACE—complete, carefree heating for the home with a basement. Like the other appliances included in special offer, Unit Furnaces are available with automatic temperature control.



FLOOR FURNACE—warmth plus healthful circulation of air! A floor furnace takes up no room in the house, yet requires no basement. Grand comfort at low cost.



FORCED-AIR UNIT—"streamlined" heating for modern homes. Circulates warm air in winter, fresh air in summer and the year round. May be installed on service porch or an out-of-the-way place.

Look for the Blue Star Seal of Approval on any equipment you select.



## WOMEN IN THE NEWS

By LEONE BAXTER

This week, as the 18th anniversary of women's successful suffrage fight is celebrated, women are again campaigning for "equality." It's a campaign symbolized by the Equal Rights Amendment, which failed earlier in the year to get through Congress, and now is buried in a Senate Committee.

But an army of feminists, optimistic and indefatigable, are preparing to uncover it again, come next Congressional session. And the program currently brewing is drawing the attention of public officials prone to liberal views and known for their espousal of women as leaders, as public servants—and as people.

"Whether for better or for worse—women have yet to know complete equality with men in legislation, industry, business or public affairs," said Lieutenant Governor George J. Hatfield to a group of San Francisco clubwomen this week.

"While I am not at all certain that the mere passage of the so-called Equal Rights Amendment to the constitution will accomplish the fulfillment of women's long struggle for human liberty, I AM certain that economic and social discrimination against women pre-

sent a challenge which we unhesitatingly must accept.

"In my opinion, our current effort to secure actual equal rights for women—and for all deserving groups—must be directed at social inequalities generally. The Equal Rights Amendment is an admirable, worthwhile endeavor, and I am in accord with the spirit that prompts it. However, equal rights for all, regardless of color, creed or sex is the practical goal which must be aimed at.

"And in pursuance of that goal, if I am elected Governor of California, I pledge myself to protect and further the rights of women, and to bend every effort to equalize and secure the rights and opportunities of all racial, religious and other deserving minority groups in our state."

Whether women's Equal Rights Amendment will accomplish a great deal in the way of further emancipation is debatable. But in their fight for further recognition, women at least are on the right track. They've carried the fight on their own shoulders about as far as they can go. From here on they desperately need the active assistance of men—and particularly of broadviewed public officials in key positions to be of service. Hatfield's pledge will be remembered. And if he's elected Governor on of th first visiting delegations to the Corner Office unquestionably will be a determined little group of women eager to confer on ways and means of boosting

## NEW FORD TRUCK HAS SHORTER TURNING RADIUS

Modern trucking demands have created a need for a new commercial car with a short turning radius, according to authorities on truck transportation trends. They say that a shorter turning radius reduces problems in heavy traffic where trucks are involved and makes parking in smaller places possible.

According to W. W. Humphrey, local Ford dealer, truck owners are already realizing this need for a modern unit of a new type. Humphrey said that the short turning radius of the new Ford V-8 cab-over-engine truck which was announced last month is one of the main reasons for its almost in-

stant public acceptance. Other features of these new trucks that are important to present-day transportation are greater load space, shorter wheel base and many conveniences such as accessibility to oil, water and fuel tanks without raising the hood or opening engine cover.

stant public acceptance. Other features of these new trucks that are important to present-day transportation are greater load space, shorter wheel base and many conveniences such as accessibility to oil, water and fuel tanks without raising the hood or opening engine cover.

"Modern traffic problems also require driver comfort as a safety measure," the Ford dealer stated. "Therefore, a ventilated cab with wide doors, windshield and windows has been provided on Ford V-8 cab-over-engine units. Running boards beneath doors and assist handles attached to the cab behind the doors aid in making accessible the interior of the cab. A heavily insulated engine cover, with quickly removable sides, separates the interior of the all-steel cab from engine heat and sound, while an oil-proof shield prevents fumes from entering the cab."

Chronicle Want Ads bring results.

## FATHER-SON TEAM

Owen Davis, Jr., son of the noted playwright, and featured with John Howard, Mary Carlisle and Robert Cummings in Paramount's "Touchdown Army," today sold half interest in an original play script to his father, who will polish it and attend to marketing negotiations.

Chronicle Want Ads bring results.

## DR. J. B. LAPE DENTIST

1004 Linden Ave.  
Phone 274  
Carpinteria

(Political Advertisement)

## Administration Leaders Ask That

# A. J. Elliott

(INCUMBENT)

## Be Re-Elected TO CONGRESS

"HE HAS MADE GOOD"



A. J. ELLIOTT

Speaker Bankhead Lauds Record, and Writes:

Jasper, Ala., July 1, 1938

Hon. A. J. Elliott,  
Tulare, California.

My Dear Friend:

Now that the strenuous labors of the last session of the Seventy-fifth Congress have been ended and our records made, I cannot resist an impulse to write you an expression of my deep appreciation of your cordial cooperation with me in carrying forward our program of legislation.

It has been a very genuine personal satisfaction for me to have served with you in the House and no one is in a better position than I to have observed the fidelity, diligence and ability with which you have performed the duties of your office as Representative of your District, and I congratulate you upon the high character of public service you have rendered.

Sincerely your friend,

W. B. BANKHEAD.

Democratic Majority Leader Sam Rayburn Urges Elliott's Re-Election:

Washington, D. C., June 10, 1938

Hon. A. J. Elliott,  
House of Representatives.

Dear A. J.:

The Seventy-fifth Congress is rapidly drawing to a close. I am writing you this letter to thank you for your fine spirit of cooperation with the House Leadership.

I want you to know how personally grateful I am to you for your loyalty not only to the House organization but also to the Administration. I have depended on you much and during the short time you have been a member of the House you have impressed yourself upon its membership in a way that has made you very highly regarded. Your work on the Committees on Public Buildings and Grounds, Public Lands, and Roads has been of great service.

I trust that the people of your District will exercise the good judgment to return you to the House of Representatives where, on account of your character and ability, you will gain in power and influence in the years to come.

With every good wish for you personally, I am,

Sincerely yours,  
SAM RAYBURN.

### SUPPORTED LEGISLATION FOR:

- Farmers
- General Welfare
- Flood Control
- Pure Foods and Drugs
- Postal Employees
- Unemployment Compensation
- Central Valley Water Project
- Highway - Aid Funds
- CCC Camps
- Rural Electrification
- Veterans and Dependents
- Labor
- Reclamation
- Low Farm Interest Rates
- Dairy Products
- Railroad Employees' Compensation

KEEP THE RIGHT MAN!—RE-INVEST IN PROVEN EXPERIENCE!

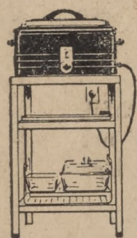
## RE-ELECT

# A. J. Elliott (Democratic-Incumbent) To Congress



A PRODUCT OF  
Vanderburgh

## THE AUTOMEAL PORTABLE ELECTRIC PLUG-IN KITCHEN



For tantalizing picnic suppers at the beach... for delicious meals at your cottage or camp... for the porch, terrace, or patio—use the Automeal portable electric roaster. It makes cooking faster, cooler, and easier. You'll use it every day. Cash price \$24.95, with matched utensil set and valuable steel table FREE. Just \$2.95 down, a year to pay the balance plus small charge for terms. Broiler-griddle unit for toasting, frying, and broiling—\$4.95 extra. See this marvelous portable electric kitchen today.

**\$2.95**  
DOWN  
PLUS SALES TAX

AT ALL DEALERS... or your EDISON OFFICE



## Tests for Deputy Sheriffs Would be Required by Fryer

Harry E. Fryer, candidate for sheriff of Santa Barbara County, has announced his intention of introducing modern methods of criminology in law enforcement, an active program of crime prevention, adequate protection for unincorporated areas of the county and the fullest cooperation with police departments in incorporated cities if he is elected to the office.

Fryer, who has served for a number of years as a member of the Glendale police department, as motorcycle officer in Santa Maria, deputy sheriff of the county for two years and as Constable of Santa Maria Township, will require all paid deputies to pass a rigid physical and mental examination to determine their qualifications and will require that each deputy file a daily work sheet showing calls made and disposition of cases. Each man will be trained in modern, crime detection methods, crime prevention and first aid.

In outlining his program, Fryer stated that he believes that an increased force of trained deputies would not only decrease the expense of operating the sheriff's office but would also effect a material savings to other branches of county government and to the taxpayers over a period of time.

He proposes to establish substations at two strategic points in the county, one at Carpinteria and the other at Buellton which would greatly lessen the chances of criminals escaping from the county at the expense of returning them for trial after they have been captured, in other parts of the State.

Such stations would also prove a strong deterrent to criminals seeking to enter the county from communities and would prove valuable as crime prevention units.

### SOIL CONSERVATION ASSOCIATION MEETS

The annual meeting of the Lompoc-Buellton Soil Conservation Association was held Thursday, August 18, 1938 at the Soil Conservation Service headquarters at their Lompoc camp. Mr. R. E. Sudden, president of the Association for the past two years, presided at the meeting. A discussion was held on the matter of application for project work to be done and explanations were given by engineers George Morrison and Earl Ross.

Others taking part in the discussion were Robert Hibbits, secretary of the Association, Robert

Batty, of Buellton, and farm advisor S. A. Anderson.

A discussion was held concerning the enlargement of the District, and upon roll call vote it was decided to allow an enlargement of present boundaries of the Association.

The election of directors for the coming year resulted in the following being elected: Owen E. Hollister, R. R. McGregor, W. H. Cooper, Robert Hibbits, R. E. Sudden, C. J. Hays, George W. Harris.

An announcement of a meeting to be held by the Farm Bureau at Foresters Hall on Monday, August 29, 8 p. m. was made. This meeting is for the purpose of discussing the new law providing for the organization of soil conservation districts.

### AUTHENTIC

Franciska Gaal's valuable collection of Slavic peasant costumes served as models for costumes in "Paris Honeymoon," in which she appears opposite Bing Crosby.

(Political Advertisement)

Elect

## Henry W. Sturmer

(ex-service man)

CONSTABLE FIRST TOWNSHIP  
Carpinteria, Summerland, Montecito

for

EFFICIENT — CAPABLE — CONSCIENTIOUS  
performance of the duties of this office

Endorsed by members of every organization and church in Carpinteria

(Political Advertising)

## Retain

# Judge A. B. Bigler In Department One of the Superior Court

Out of the thousands of civil cases handled by Judge Bigler during his seven years in office but six of his decisions have been reversed by a higher court. A record attained by few judges.

He has always made his services available to the public at all times, maintaining long hours in order to meet their requirements.

His integrity is unquestionable and no case is ever tried in his court before it reaches the court room.

He is thoroughly familiar with all points of the law having practiced as an attorney for many years and having served as deputy District Attorney for Santa Maria for thirteen years.

## His Record Speaks for Itself

# SAFEGWAY

Your Neighborhood Grocer

## FRESH FRUIT

Now fresh fruits are at their best. Menu planning is made easier and meals taste better. The abundance of fresh fruits at low prices makes canning most economical, too!  
For the best in fresh fruits—shop today at your neighborhood Safeway. Quality is always high, prices are always low!

**GRAPES THOMPSON SEEDLESS** 5 lbs. for **10<sup>c</sup>**  
Sweet, vine-ripened, juicy Thompson Seedless grapes in large compact bunches.

**PEARS MOUNTAIN BARTLETTS** per lb. **5<sup>c</sup>**  
Mountain grown, good size, yellow-ripe California Bartletts. Exceptional flavor.

**PEACHES J. H. HALE VARIETY** per lb. **5<sup>c</sup>**  
J. H. Hale variety, red-centered freestone peaches. Excellent to slice.

**Black Grapes** 3 lbs. **10<sup>c</sup>** Ribier type. Sweet and juicy.

**Watermelons** Klondyke or Stripes. Sweet, vine-ripened. **3/4 lb.**

**Tomatoes** 3 lbs. **10<sup>c</sup>** Stone variety, large size. Thick-meated.

**Lettuce** 5<sup>c</sup> Crisp, solid heads, northern grown.

**Onions** 6 lbs. **10<sup>c</sup>** Sweet Spanish type For sandwiches.

**Potatoes** 10 lbs. **19<sup>c</sup>** Fancy No. 1 Russets.

### Grocery Values

**APPLE JUICE** 12-oz. bottle **9<sup>c</sup>**  
Signet Brand, fine quality juice. Excellent flavor. Quart bottle priced at 19c.

**COFFEE AIRWAY BRAND** 2 lbs. for **25<sup>c</sup>**  
Freshly roasted, ground to your order. Regular price, pound 14c; Special low price today.

**LIPTON'S TEA** 1/2-lb. box **20<sup>c</sup>**  
Famous Yellow Label Brand, Black tea. Excellent for iced tea. 1/2-pound box, 38c.

**SOAP SU-PURB BRAND** 2 24-oz. boxes **35<sup>c</sup>**  
Granulated. Easy on the hands. (Price ex-tax, .16992; sales tax, .00508)

**PARTY PRIDE EXTRA RICH ICE CREAM**  
Vanilla, Strawberry, Chocolate  
Pint box **13c** Per quart **25c**  
Party Pride Sherbet **19c**  
Pint box 10c; per quart

**TOMATO JUICE STOKELY'S FINEST**  
**NEW LOW PRICES 5<sup>c</sup>**  
No. 2 can **5<sup>c</sup>**  
23-ounce can, 2 for 13c  
46-ounce can, 2 for 25c

**GRAPEFRUIT JUICE**  
**ARIZ-SWEET OR STOKELY**  
2 No. 2 cans **13c**

**Peanut Butter** 2-lb. jar **27c**  
Beverly. 1-lb. jar 15c;  
**Kopper Kettle Jelly** 21c  
Grape, Strawberry. 2-lb. jar  
**Oleomarine** 11c  
Robin Hood. Per pound  
**Edwards Coffee** 22c  
Regular or drip. 1-lb. can  
**Nob Hill Coffee** 2 lbs. for **35c**  
Finest quality.  
**Tomato Soup** 2 10 1/2-oz. cans **9c**  
Van Camp's Brand  
**Alber's Corn Flakes** 5c  
Delicious cereal. 8-oz. box  
**Dog Food** 3 tall cans **14c**  
Strongheart Brand (Ex-tax, .04531; sales tax, .00136)  
**Argo Gloss Starch** 2 for **13c**  
For clothes. 12-oz. box (Ex-tax, .06311; sales tax, .00189)  
**Comfort Tissue** 25c  
Family package of four rolls (Ex-tax, .24272; sales tax, .00728)  
**Toilet Soap** 3 bars **13c**  
White King Brand (Ex-tax, .04207; sales tax, .00126)  
**Mission Bell** 3 bars **13c**  
Toilet Soap (Ex-tax, .04207; sales tax, .00126)  
**Peet's Soap** 25c  
Granulated. 36-oz. box (Ex-tax, .24272; sales tax, .00728)  
**Rinso Soap** 20c  
For household uses. 22 1/2-oz. (Ex-tax, .19417; sales tax, .00583)

### Top Quality Meats

**BEEF ROAST** per lb. **17<sup>c</sup>**  
Fancy center cut seven bone of Safeway Guaranteed Beef. (Neck cut to pot roast, lb. 15c)

**LAMB ROAST** per lb. **16c**  
Full center cut shoulder.

**SALT PORK** per lb. **19<sup>c</sup>**  
Salt sides cut from fancy Eastern pork. Excellent with beans.

**LAMB LEGS** 19 1/2c  
Genuine lamb, lb.

**SLICED BACON** 15c  
Cudahy's Gold Coin

**PIECE BACON** 25c  
Fancy eastern fine flavor

**GROUND BEEF** 12 1/2c  
All meat fresh gr'nd lb

**LUNCHEON MEATS** 25c  
Sliced as displayed, lb.

**PURE LARD** 12c  
Sanitary cartons, lb.

**SHORTENING** 10c  
Keen brand, lb (sold in grocery dept.)

**STEAKS** 22 1/2c  
Round-Swiss, choice, lb.

**PORK ROAST-LoIn** 25c  
Tenderloin end, lb.

**SWIFT'S SAUSAGE** 20c  
Links, little pigs, lb.

Prices Effective Friday and Saturday, August 26 -27.

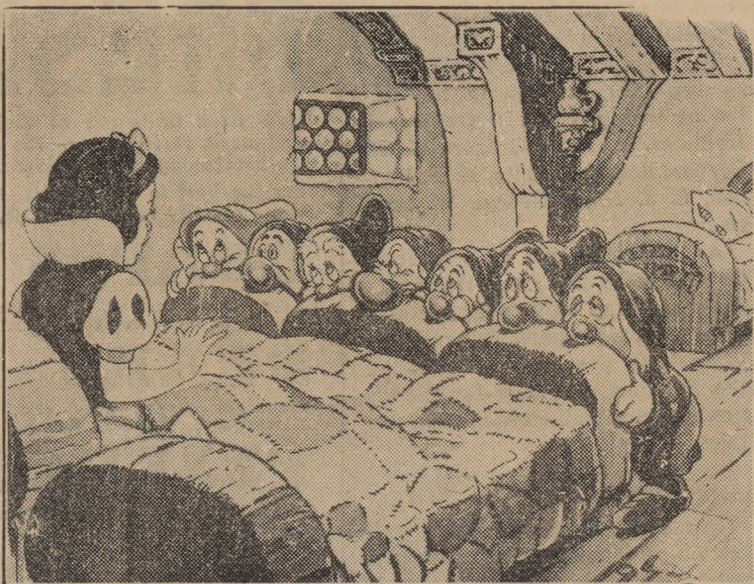


## Your Hollywood Correspondent Reports . . .

Biggest event in Hollywood this week was the preview of Paramount's "Spawn of the North" held at the Village Theatre in Westwood. Other than the regular audience reservations were made for 800 celebrities and members of the press. Those attending included Dorothy Lamour, George Raft, Henry Fonda, John and Elaine Barrymore, Akim Tamiroff, Lynne Overman, Producer Albert Lewin, Adolph Zukor, William LeBaron, Jack Benny and Mary Livingstone, Joan Bennett, the Gary Coopers, Gail Patrick, Frances Farmer and Leif Erikson, Olympe Bradna, Sam Goldwyn, Walter Wanger, Frank Lloyd, John Howard, Carole Lombard and Clark Gable, Roscoe Karns and Randolph Scott.

Claudette Colbert's mother will be back from her Paris vacation in time to attend the opening of Claudette's latest picture, "Zaza." Alma Lloyd, Frank Lloyd's daughter, is cutting her Honolulu vacation short to be back in Hollywood for the first showing of her father's picture, "If I Were King," starring Ronald Colman with Frances Dee, Ellen Drew, Basil Rathbone and Miss Lloyd.

Dorothy Lamour is home from the hospital following an emergency appendectomy and will be able to report to Paramount in the next two weeks when she is scheduled to start working with Lloyd Nolan in "St. Louis Blues." John and Elaine Barrymore off to Seattle for the premiere of "Spawn of the North." Gail Patrick and her secretary, Jean Edwards, are planning a motor trip back east, when Gail completes her role in "Disbarred." Fay Bainter drives



The scene in Walt Disney's full-length feature production, "Snow White and the Seven Dwarfs," as the dwarfs find Snow White occupying all of their beds in the cottage where she has taken refuge from the wicked Queen who wants to take her life. There is a riot of fun and music in this picture filmed in Multiplane Technicolor. Coming to California Theatre for three days starting Saturday at no advance in prices.

50 miles every day to get to Paramount from her place at Malibu. She's working with Bob Burns, John Beal and Irvin S. Cobb in "The Arkansas Traveler."

Fred MacMurray getting in a lot of short fishing trips during his time off from "Men With Wings." Ray Milland, who plays in the same picture with Fred, had to cut a vacation to Coronado short to be back in town for work. Elizabeth Patterson is in Hollywood hospital suffering from a dislocated knee. Ken Dolan sends flowers to the "Thanks for the Memory" set every day for Shirley Ross. Intimates of Martha Raye predict that wedding bells will ring for her and Dave Rose in early October.

### U.S.C. GRID SQUAD ENDING VARIETY OF SUMMER JOBS

LOS ANGELES—With the opening of football practice scarcely more than two weeks away, University of Southern California's gridgers are now on the home stretch of a variety of summer occupations, from office jobs to bridge building and from movie extra work to walking a police beat.

White collar office workers include Fullback Bill Sangster and End Jim Slatter, who have their headquarters in the Hall of Justice, and End Bill Coleman, who helps keep the books for an oil company. The bridge builder is Quarterback Jimmy Jones who holds forth in the Angeles National Forest.

Movie extra work from time to time during the summer months has been performed by Halfbacks Boyd Morgan and Joe Shell, Fullbacks by Roy Engle. Bob Peoples and Jack Banta, Center Don McNeil, Quarterback Frank Swirles and Tackle Howard Stoecker. Tackle Quentin Klenk has been helping to keep the peace at the Catalina Island Isthmus as a mem-

ber of the island police force.

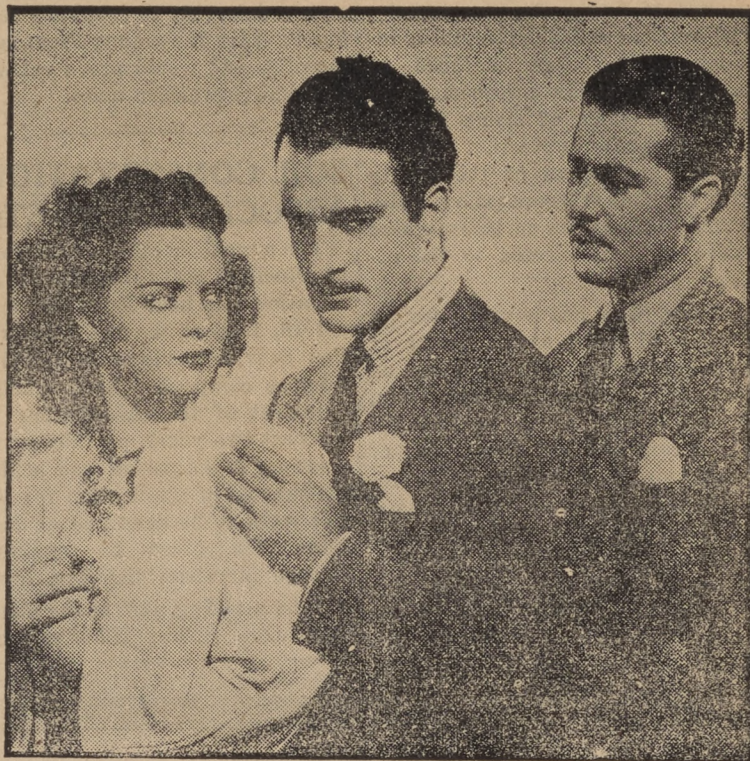
Tackle Frank Bennett, End Sal Mena, Guard Ben Sohn and Quarterback Henry Sasaki worked during the cantaloupe season in a packing house in Imperial Valley. Running Guard Harry Smith also tossed cantaloupe crates about later worked for an ice company and is planning to spend the last week of his summer as counselor in a boys' camp in the mountains.

Tackle Don Doyle is a stevedore at Avalon for the Catalina Island Company. Quarterback Doyle Nave is a member of an oil well crew near Bakersfield. Halfback Bob Hoffman works in the warehouse of a local department store. Center Alex Atanasoff is an assistant in the University of Southern California Science Building.

Fullback Ambrose Schindler is a counselor in the Treasure Island Boys' Camp at Catalina. Ends Ray Wehba, Ralph Stanley and John Stonebraker, Halfback Ed Stevenson and Quarterback Bob Berryman are attending the Trojan Summer Session. Tackle Phil Gaspar is enjoying a vacation at Avalon.

### RECLAMATION WILL NOT CREATE AN OVERPRODUCTION

Figures just compiled show that it is a mistake to believe that the Federal government is bringing millions of acres of new land into production through irrigation projects, according to a statement



Arleen Whalen, Albert Rolan and oDn Ameche in "Gateway" which starts Sunday at the Fox Arlington. Also on the same program Jane Withers in "Keep Smiling."

made today by W. N. Hollister, chairman of Santa Barbara County Agricultural Conservation Association.

The fact is, according to the statement, that the only new land brought under irrigation by Federal projects during the past five years has been on projects authorized and started before 1933. Only about 1,000,000 acres of additional lands are expected to be brought under irrigation by 1948 by reclamation projects now under construction, or which have been under construction during the past four years. This acreage of new land has been more than offset by a reduction of crop land brought about by land purchases made by the Farm Security Administration and other Governmental agencies and by the "Restoration" land program in most states of the Western region.

In 1937, after the Federal Government had been building reclamation projects for 35 years, the land in crops receiving water from Federal enterprises totaled less than 1 per cent of the total land in crops in the country that year. Moreover, this figure included land already irrigated by private projects which merely purchased addi-

tional water from Federal storage reservoirs, so that the 1,700,928 acres of land actually a part of the Federal projects represented only half of one per cent of the 341,000,000 acres harvested in the United States in 1937.

Some farmers have expressed a fear that increased plantings of soil-depleting crops might be taking place on Federal-irrigated land at the same time the AAA program is reducing crops on other lands. But it was pointed out that hay and forage, from the standpoint of acreage, are the principal crops on such land, and that much of this land is itself in the AAA program.

### HOLD A RECORD

As they work in Paramount's Technicolor history of aviation, "Men With Wings," William A. Wellman, producer-director, and Ray Milland, actor, are establishing a record. Wellman is the only director to have made three colored pictures and Milland is the only actor to have appeared in three.

## IN DOWNTOWN LOS ANGELES



FAMOUS from COAST to COAST for GOOD FOOD

from \$2.50 PER DAY

FIFTH and HILL Opposite The Subway Terminal

CONVENIENT — to downtown shops, theatres and all points of interest.

## HOTEL CLARK

P. G. B. Morriss, Manager

WRESTLING - 8:30 p. m. EVERY THURSDAY

## Mission Athletic Club

635 E. Montecito Phone 26394 SANTA BARBARA

PLAN FOR California STATE FAIR

World famous NIGHT REVUE

10 days

SEPT. 2 THRU 11

10 nights

Sacramento

## WARNER BROS. CALIFORNIA

Santa Barbara — Ph. 22190

NOW PLAYING Rudy Valee - Rosemary Lane

—in— "Gold Diggers in Paris" also William Boyd in "Heart of Arizona" STARTS SATURDAY

WALT DISNEY'S first full length feature . . .

SNOW WHITE and the SEVEN DWARFS in Multiplane Technicolor

Added March of Time Color Cartoon - Latest News

## FOX ARRLINGTON

THE PLACE TO GO! NOW PLAYING

3 Cheers! RAYE! RAYE! RAYE! GIVE ME A SAILOR

MARTHA RAYE BOB HOPE BETTY GIBBLE

STARTS SUNDAY

THE WORLD'S GATEWAY OF LIBERTY

America's haven of refuge becomes the setting for a powerful drama of life!

Don AMECHE Arleen WHELAN

"GATEWAY"

with LYLE TALBOT GREGORY RATOFF BINNIE BARNES



**CANDID  
Camera Shots**

By A. Photo Phinish

ART WEISHAR washing and polishing the front of the Ford Garage.

MARSHALL MADDOX killing eight squirrels, one rabbit and one hawk while on his vacation. His younger brothers, Jerry, also bagged three squirrels.

FRANCES BOVERSON wearing dark glasses and claiming that she ran into a car door.

D. O. McINTYRE looking for the little boy that threw a rock through the window of his place of abode.

FRANK WYKOFF getting up before breakfast to take some Hi-Y boys to their summer camp.

BILL UDALL sitting down and covering himself with a fire hose.

A WAITRESS nicknamed "Tizzie Lish" serving coffee with a smile.

THE POPCORN STAND decorated with black crepe for a short time Tuesday afternoon. Result of a practical joke feud.

**State Primary Paramount**

Continued from page 2

Communist also seeking this position.

The office of Controller seems to be more popular since there are three Republicans, ten Democrats, three Progressives, one Prohibitionist, two Townsendites, and one Communist out for this office.

The treasurer's office is sought by two Republicans and five Democrats and the Attorney-General's office is also sought by two being seven in all. Four Progressives and two Townsendites are also out for this post.

For United States Senator there are but three Republican candidates, Philip Bancroft, Ray L. Riley and Louise Ward Watkins. There are five names on the Democratic ballot, including Riley who is filed on both tickets, William Gibbs McAdoo, Sheridan Downey, publicans but there are more Democrats out for this job, there be John W. Preston and James W. Mellon.

For Representative for Congress for this district F. Fred Hoelscher



**RICHARD BONELLI**

Soloist for the third and final concert in the Summer Festival Series in Santa Barbara appearing on Saturday, September 3, with the DeMarcos, Fray and Braggiotti and the Symphony Orchestra.

of Santa Barbara is the only candidate on the Republican ballot.

There are four candidates on the Democratic ballot including A. J. Elliott, Horace W. Campbell, Charles P. Martin and C. L. Tomerlin.

Cross-filing is permitted under the California primary law and many candidates have filed on all three majority tickets making it very confusing for the voter since their true political affiliation is not shown on the primary ballots.

Bowling is the chief physical recreation of petite Louise Campbell, who plays the principal feminine role in Paramount's cavalcade of the air, 'Men With Wings.'

**CLASSIFIED**

FOR SALE OR RENT: Twelve and Fourteen Foot Boats. See on Beach at Ventura County Line. 1 tp

NO DIFFERENCE what kind of property you have I can sell it. Especially am I in need of small parcels of land, citrus properties & ranches. HOWARD C. GATES, Granada Theatre Bldg. Phone 23571, Santa Barbara.

**BONELLI THANKS PUBLIC FOR CAMPAIGN SUPPORT**

"In this last week of my campaign for election to the State Board of Equalization, I want to express my sincere appreciation to the thousands of friends and the scores of organizations who are supporting me, for the effective work they are doing," said William G. Bonelli today. "The campaign, without exception, is being conducted on clear-cut issues and along clean and sportsmanlike lines without misrepresentation or mud-slinging. The public has been awakened to the vital importance of this Board, which can be a dominant factor in helping to solve some of our social welfare problems through proper enforcement of our liquor laws. Through administration of the sales tax this Board is the guardian of the financial security of our school system, and through the gasoline tax, it insures the money for the splendid highway system of California.

"I am proud of the fact that an overwhelming majority of the endorsements of the business groups, civic groups, and of the church leaders, veteran organizations, labor leaders, teachers, and people in all walks of life have rallied to my support. This indicates that the public has generally accepted the fact that the non-partisan and judicial nature of the work of this Board must be handled with courtesy, impartiality, and efficiency,

**ROBERTSON GAINS MAJOR OBJECTIVES**

One of the major objectives of Assemblyman Alfred W. Robertson during the last four years has been the securing of a new State college to be built on the new site behind the Santa Barbara breakwater. During the last session of the legislature he put thru the budget and by separate bill legislation providing for appropriations therefore. It was not, however, until the last week that the governor and head of the Department of Finance signed an allocation of \$550,000 of state money for this purpose, which is to be followed up by a \$450,000 grant from the government which will

insure a \$1,000,000 building program, the largest in the history of Santa Barbara, for construction of the new college.

Large numbers of young people from all over the county are now enjoying the advantages of this college and it is expected with the new building program that the registration from the county will more than double. The construction of the buildings covering a probable period of two years will give employment to several hundred residents who might otherwise be unemployed.

Hank Luisetti, idol of millions of youngsters as Stanford's great basketball player, makes his screen debut in Paramount's "Campus Confessions."

**THE FASHION STUDIO**  
610 MAPLE AVE.  
CARPINTERIA, CALIF.  
Custom-built Clothes For Women

**COMPLIMENTS OF**

"The voters, whose approval I ask on August 30th, may rest assured that whatever I have in the way of qualifications by reason of training and experience will continue to be used by me independently, and, I hope courageously, in their behalf for whatever time I continue as your member of the State Board of Equalization."

**COMPLIMENTS OF**  
  
**J. E. LEWIS**  
County Clerk

**COMPLIMENTS OF**  
  
**Percy C. Heckendorf**  
DISTRICT ATTORNEY  
of Santa Barbara County

**W. thoe SCHWARTZENBERG**  
STEAMSHIP — AIRPLANE — HOTEL RESERVATIONS  
WORLD WIDE (FREE) TRAVEL SERVICE  
1018 State St. SANTA BARBARA, CALIF. Phone 4836

---

**TONY'S LOG CABIN**  
THE RESTAURANT UNIQUE  
FAMOUS ITALIAN DISHES  
Order Our Special SIZZLING STEAK  
HAVE YOUR NEXT PARTY IN OUR BANQUET ROOM  
MIXED DRINKS — WINE — BEER  
536 State St. Tel. 21291 Santa Barbara

**PERSONAL!**

IF the Gentleman who was heard to complain about his wife getting awfully sore about having to walk home because the car wouldn't start will kindly call on us we will quickly find the source of the trouble and eliminate it. Possibly car needs only a motor tune-up but should the trouble prove more serious than that we will gladly give an estimate on the cost of repairs and arrange to overhaul it at your convenience.

**P & B Automotive Service**  
Old Airport Bldg. - Ph. 4491 - Coast Highway  
Emory Peterson — George Boverson

**THE SEASON'S HIGHLIGHT**

**Jimmy McPherson's Dance Band**

—Opening at—  
**EL CORTIJO - Montecito**

TUESDAY EVENING, SEPTEMBER 6

Our private rooms have been enlarged and Re-decorated for the Fall Season.

Dinner Service Starts at 5 o'clock.  
2,000 party reservations yearly.

**"THE GAYEST PLACE IN TOWN"**



(POLITICAL ADVERTISEMENT)

# ELECT HARRY E. FRYER



## SHERIFF

... if you value

### Efficiency--

Will require deputies to pass physical and mental tests—filing of daily reports—training in modern criminology methods and crime prevention.

### Experience--

Former Glendale Police Officer—Santa Maria Motorcycle Officer, Two years Santa Barbara County Deputy Sheriff, Four years Constable Santa Maria Township.

### Enforcement

Full protection for unincorporated areas — establishment of sub-stations at Carpinteria and Buellton — fullest co-operation with police departments in incorporated towns.

## Judge Bigler Comes from Line of Famous Statesmen

Judge A. B. Bigler, who is a candidate for re-election to district One of the Superior Court, comes by his intelligence, sagacity and his ability to read human nature, through a long line of distinguished ancestors. His father served as United States Treasurer under Grover Cleveland's administration having been appointed in 1893 and serving throughout Cleveland's term of office. His grandfather was Governor of Pennsylvania at one time having been elected to that office in 1852 and his uncle, Gen. James B. Steedman was appointed governor of Georgia by President Lincoln at the close of the civil war. His great uncle, Tom Bigler, was the second elected governor of California and served two terms.

Judge Bigler came to Santa Barbara county shortly after he graduated from Princeton University where he studied law under Woodrow Wilson and also acquired a theoretical and practical knowledge of civil engineering which has proven a valuable asset in handling many civil cases.

He was appointed Judge of the Superior Court in 1931 by Governor James Rolph when a second court was created in Santa Barbara County and was unopposed for this office when he ran for election in 1932. Prior to his appointment as Judge he served as deputy district attorney in Santa

Maria for thirteen years and as a member of the Santa Maria school board.

Although the law does not permit Judge Bigler to hear criminal matters, his time is amply filled by civil cases which require much more time and research than do criminal cases. He arrives at his chambers at 8:30 in the morning and remains until six in the evening in order that his services may be available to the public at all times.

### BARRYMORE CROONS

John Barrymore turns crooner for the first time in his film career, in a scene of Paramount's Alaskan salmon saga, "Spawn of the North," in which he's featured with George Raft, Henry Fonda and Dorothy Lamour, it was revealed today.

### Franklin Rally

(Continued from page 1)  
city attorney of Oxnard, will be speaker of the evening stressing the fitness of Dr. Franklin for office of lieutenant governor and the post of second-in-state command. Dr. Franklin will speak frankly of the reasons that have moved him to seek this public office after years of devotion to his profession.

A group of near-neighbors from the Goleta area will serve as a reception committee and Goleta women will serve punch after the rally. A band will play for half an hour preceeding the opening. Louis J. Mohr and Mrs. Stanhope Hixon are joint chairmen of the committee on arrangements.

### Ideal Conditions

(Continued from page 1)  
berg, "despite the fact that we have increased our defense expenditures, the army is to be used purely for defense purposes."

As to there being a general European war, Mr. Safwenberg thinks not. The recent Franco-British accord "has caused the dictators to think."

Mr. Safwenberg is starting for home on Friday. He likes the United States. But Sweden is his home.

### THEY'RE IN THE BAG!



The newest and most complete line of personal CHRISTMAS CARDS

To see samples call Mrs. Barney Kathman at Carp. 4531 — or

Carpinteria Chronicle

(Political Advertisement)

## Townsend Endorsed Candidates

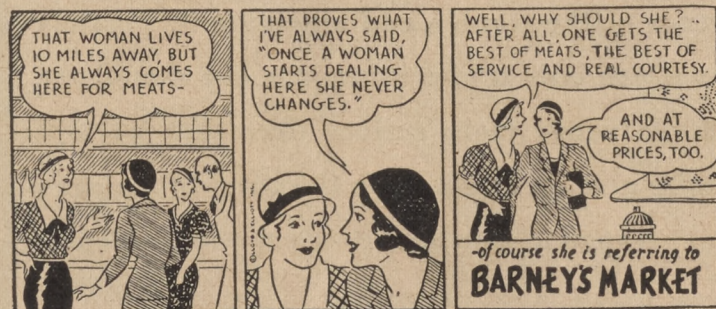
A. J. ELLIOTT  
For Congress

SHERIDAN DOWNEY  
For U. S. Senate

Dr. Francis E. Townsend and national headquarters, have wholeheartedly endorsed A. J. Elliott for Congress and Sheridan Downey for United States Senate. Everyone interested in the Townsend plan is urged to be sure and go to the poles August 30th and vote for Elliott and Downey.

Signed: TOWNSEND COMMITTEE

### "Your Neighbor Says" by Barney's Market



**Barney's Market**  
IN VAN'S MARKET  
FINEST MEAT MONEY CAN BUY