



WE HAVE A LARGE SELECTION OF PASSOVER FOODS AT MOST STORES

WIN YOUR SHARE OF  
**1,000,000.00 DOLLARS!**  
PLAY TV'S THRILLING

**"Let's Go to the Races"**

WIN UP TO **\$2,000**

**WEEKLY!**

WIN \$2.00, \$5.00, \$10.00, \$100.00, \$1,000.00 • NIGHTLY DOUBLE PAYS \$2,000.00



\$1,000 WINNER  
MILTON SCHNEIDER  
SEAL BEACH



\$2,000 WINNER  
GENEVIEVE SILVESTRI  
LOS ANGELES



\$100 WINNER  
WALTER WRIGHT  
INGLEWOOD



\$1,000 WINNER  
HARRY BROWN  
SEAL BEACH



\$1,000 WINNER  
GEORGE HOOKER  
INGLEWOOD

**LOOK WHO'S WINNING**  
\$2,000 • RUTH MITCHEL • LOS ANGELES  
\$2,000 • J.L. NOBLE • SUN VALLEY  
\$1,000 • YOLANDA COLE • PLACENTIA  
\$1,000 • GERALD FOURNIER • DESERT HOT SPRINGS  
\$1,000 • IRENE NORIEGA • MONTEREY PARK  
\$1,000 • MORRIS C. STONE • LOS ANGELES  
\$1,000 • JESSIE SANCHEZ • EL MONTE  
\$100 • EVELYN MILLER • OXNARD  
\$100 • KEVIN N. DENHAM • PARAMOUNT  
\$100 • GLORIA D. SMITH • GOLETA  
\$100 • JOHN H. O'HARA • LA PUENTE

**RACE PROGRAM DATA**

\$1,066,000 PRIZE MONEY AVAILABLE DURING A 52 WEEK PROGRAM • 304,928 TOTAL WINNING GAME PIECES DURING PROGRAM • 1 IN 161 TICKETS ARE WINNING GAME PIECES • TOTAL NUMBER OF OUTLETS: 50 • PROGRAM SCHEDULED THROUGH JANUARY 26, 1980 • AREA COVERED BY PROGRAM: GREATER LOS ANGELES, PALM SPRINGS, SANTA BARBARA, OXNARD AREAS IN CALIFORNIA, LAS VEGAS, NEVADA.

WATCH KHJ-TV  
CHANNEL 9  
SUNDAY • 8:30 P.M.  
APRIL 8

FOR THE WINNING HORSES  
PICK-UP YOUR FREE  
2037 GOLD CARD NOW!

**RACE ODDS CHART**

AWARD	NUMBER OF WINNERS	1 STORE VISIT PER WEEK	3 STORE VISITS PER WEEK
\$2.00	5,250	1 IN 180	1 IN 60
\$5.00	400	1 IN 2,363	1 IN 788
\$10.00	200	1 IN 4,726	1 IN 1,575
\$100.00	10	1 IN 94,500	1 IN 31,500
\$1000.00	3	1 IN 315,000	1 IN 105,000
\$2000.00	1	1 IN 945,000	1 IN 315,000

**SMOKED HAMS**  
SHANK PORTION WATER ADDED  
**88¢** LB.  
Manager's Special

**MIRACLE WHIP**  
KRAFT • SALAD DRESSING • 32-OZ.  
**89¢**  
Manager's Special

SMITH'S FOOD KING DISCOUNT COUPON  
**GIANT TIDE**  
DETERGENT 49-OZ. BOX  
WITH 5.00 PURCHASE  
**99¢**  
EXCLUDING LIQUOR, TOBACCO, FLUID MILK • LIMIT 1 PER COUPON • 1 COUPON PER CUSTOMER VALID APRIL 5-11, 1979

SMITH'S FOOD KING DISCOUNT COUPON  
**TOMATO JUICE**  
LIBBY'S 46-OZ. CAN  
WITH 5.00 PURCHASE  
**39¢**  
EXCLUDING LIQUOR, TOBACCO, FLUID MILK • LIMIT 1 PER COUPON • 1 COUPON PER CUSTOMER VALID APRIL 5-11, 1979

**FRESH PORK ROAST**  
RIB END  
**1.28** LB.  
Manager's Special

**PREMIUM BREAD**  
FOOD KING • WHITE REGULAR • GIANT SANDWICH • 24-OZ.  
**49¢**  
Manager's Special

SMITH'S FOOD KING DISCOUNT COUPON  
**SPRINGFIELD CLEANSER**  
14-OZ. CAN  
WITH 5.00 PURCHASE  
**FREE!**  
EXCLUDING LIQUOR, TOBACCO, FLUID MILK • LIMIT 1 PER COUPON • 1 COUPON PER CUSTOMER VALID APRIL 5-11, 1979

SMITH'S FOOD KING DISCOUNT COUPON  
**WISHBONE ITALIAN**  
SALAD DRESSING 16-OZ. BTL.  
WITH 5.00 PURCHASE  
**69¢**  
EXCLUDING LIQUOR, TOBACCO, FLUID MILK • LIMIT 1 PER COUPON • 1 COUPON PER CUSTOMER VALID APRIL 5-11, 1979

**LONDON BROIL**  
USDA CHOICE BEEF THICK CUT TOP ROUND  
**2.38** LB.  
USDA CHOICE Manager's Special

**BLUE BONNET**  
MARGARINE QUARTERS • 1-LB. CTN.  
**45¢**  
Manager's Special

SMITH'S FOOD KING DISCOUNT COUPON  
**ANY BEEF ROAST**  
RECEIVE 60¢ OFF ON ANY 3-LB. OR MORE BEEF ROAST  
WITH 5.00 PURCHASE  
**60¢ OFF**  
EXCLUDING LIQUOR, TOBACCO, FLUID MILK • LIMIT 1 PER COUPON • 1 COUPON PER CUSTOMER VALID APRIL 5-11, 1979

SMITH'S FOOD KING DISCOUNT COUPON  
**AVOCADO DIPS**  
SUNSET • ONION PLAIN • BACON HOT • 8-OZ. CUP  
WITH 5.00 PURCHASE  
**49¢**  
EXCLUDING LIQUOR, TOBACCO, FLUID MILK • LIMIT 1 PER COUPON • 1 COUPON PER CUSTOMER VALID APRIL 5-11, 1979

PRICES EFFECTIVE 9 AM THURSDAY, APRIL 5 THRU MIDNIGHT, WEDNESDAY, APRIL 11 • LIMIT RIGHTS ARE RESERVED

<b>CARPINTERIA</b> 1018 CASITAS PASS ROAD OPEN 7AM-MIDNIGHT	<b>OXNARD</b> VICTORIA AT HEMLOCK • CHANNEL IS. CENTER • OPEN 7AM-MIDNIGHT
<b>GOLETA</b> 5170 HOLLISTER • MAGNOLIA OPEN 7AM-MIDNIGHT	<b>SANTA BARBARA</b> 3943 STATE • 5 POINTS CENTER OPEN 7AM-MIDNIGHT
<b>GOLETA</b> 5801 CALLE REAL NEAR FAIRVIEW OPEN 24 HOURS	<b>SANTA BARBARA</b> MEGHS RD. • CLIFF DRIVE OPEN 24 HOURS
<b>GOLETA</b> 310 PACIFIC OAKS • UNIV. VILLAGE OPEN 7AM-MIDNIGHT	<b>SANTA BARBARA</b> 104 W. ANAPAMU AT CHAPALA OPEN 7AM-MIDNIGHT
<b>OXNARD</b> 920 VENTURA ROAD • FREMONT OPEN 7AM-MIDNIGHT	<b>SANTA BARBARA</b> 17 S. MILPAS ST. OPEN 7AM-MIDNIGHT

**MOST STORES OPEN 7 AM TO MIDNIGHT**

SMITH'S FOOD KING DISCOUNT COUPON  
**FRESH MUSHROOMS**  
PLUMP 8-OZ. PACKAGE  
WITH 5.00 PURCHASE  
**79¢**  
EXCLUDING LIQUOR, TOBACCO, FLUID MILK • LIMIT 1 PER COUPON • 1 COUPON PER CUSTOMER VALID APRIL 5-11, 1979

**ALL THREE COUPONS ARE GOOD WITH ONE \$5 PURCHASE**



# "Let's Go

## SMOKED HAM



SHANK  
PORTION  
•  
WATER  
ADDED

**88¢**  
LB.

Manager's  
Special

## PORK LOIN ROAST

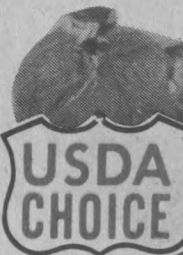


FRESH  
RIB  
END

**1.28**  
LB.

Manager's  
Special

## LONDON BROIL

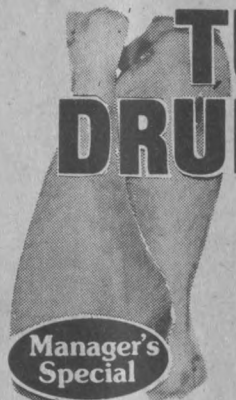


THICK  
CUT  
BEEF  
TOP ROUND  
OR TIP

**2.38**  
LB.

USDA  
CHOICE  
Manager's  
Special

## TURKEY DRUMSTICKS



MEATY  
FULL 'O  
FLAVOR

**59¢**  
LB.

Manager's  
Special

## PORK LOIN CHOPS



FRESH  
CENTER  
RIB CUT

**1.78**  
LB.

Manager's  
Special

Red Letter Price **BONELESS HAMS**

WESTERN STYLE.....

**2.89**  
LB.

Red Letter Price **BOTTOM ROUND**

ROAST BONELESS BEEF.....

**2.38**  
LB.

Red Letter Price **MASTERPIECE HAM**

THOMAS E. WILSON • BONELESS.....

**2.98**  
LB.

Red Letter Price **PORK CHOPS**

CENTER LOIN CUT.....

**1.98**  
LB.

## HALF PORK LOIN ROAST



RIB OR  
SIRLOIN  
HALF

**1.49**  
LB.

Manager's  
Special

## WHOLE FRYER LEGS



FLAVORFUL  
CHICKEN

**89¢**  
LB.

Manager's  
Special

## BUTT PORTION HAM



WATER  
ADDED

**1.09**  
LB.

Manager's  
Special

Red Letter Price **BEEF STEAKS**

LARRY'S BREADED • 12-OZ. PKG.....

**1.49**  
EA.

Red Letter Price **JUMBO BURRITOS**

ZIPPE' • 10-OZ. PKG. ....

**53¢**

Red Letter Price **HILLSHIRE FARM**

SMOKED SAUSAGE.....

**2.09**  
LB.

Red Letter Price **ZIPPE' CORN DOGS**

ZIPPE' OR PINATA • 10-OZ. PKG. ....

**98¢**

## CENTER HAM SLICES

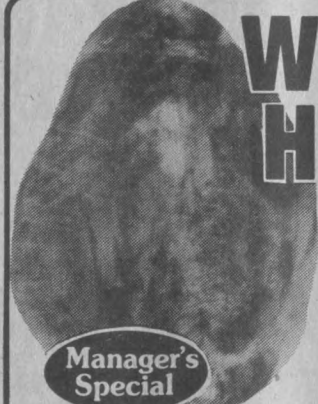


WATER  
ADDED

**1.98**  
LB.

Manager's  
Special

## WHOLE HAMS



15 TO 18  
LB. AVG.  
•  
WATER  
ADDED

**1.29**  
LB.

Manager's  
Special

## MAHI MAHI FILLET



FRESH  
FROZEN  
TRAY  
PAK

**1.49**  
LB.

Manager's  
Special

CHOOSE YOUR FAVORITES FROM OUR DELICATESSEN

### LONGHORN CHEDDAR

KICKAPOO  
WISCONSIN  
CHEESE  
6 1/2-OZ.  
PKG.

**98¢**

Manager's  
Special

### TASTEE BRAND BOLOGNA OR COTTO



SLICED  
1-LB.  
PKG.

**1.19**

Manager's  
Special

Manager's Special **BORDEN AMERICAN SINGLES**

CHEESE FOOD • 1-LB. PKG.....

**1.89**

Manager's Special **TURKEY HAM SLICED**

RICH'S • 8-OZ. PKG. ....

**1.39**

Manager's Special **MEAT WIENERS**

OL' VIRGINIA • 12-OZ. PKG.....

**1.05**

Manager's Special **SHREDDED CHEESE**

FRIGO • CHEDDAR • MOZZARELLA • 8-OZ.....

**1.39**

Red Letter Price **KRAFT JACK**

CHEESE • SELECT-A-SIZE.....

**2.15**  
LB.

Manager's Special **TORTILLA STRIPS**

SUSI'S • 7-OZ. PKG.....

**59¢**

Manager's Special **DANISH HAM**

DANOLA • 3-OZ. PKG.....

**89¢**

Manager's Special **CANNED HAM**

MOHAWK • 3-LB. CAN.....

**6.89**

WE HAVE A LARGE SELECTION OF FRESH AND FROZEN FISH FOR THE LENTEN SEASON...

LENTEN SEAFOOD SEA-LECTIONS

## PACIFIC RED SNAPPER



FRESH  
FILLET

Manager's  
Special

**2.79**  
LB.

Red Letter Price **FRESH BUTTERFISH**

FILLET.....

**1.79**  
LB.

Red Letter Price **FRESH OYSTERS**

WESTERN • 8-OZ. JAR.....

**1.59**

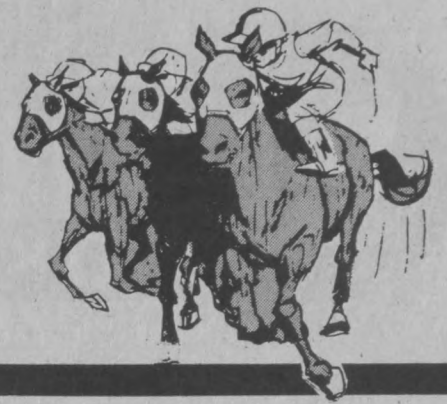
Red Letter Price **SHARK FILLET**

FRESH FROZEN • TRAY PAK.....

**1.89**  
LB.

# WE WANT TO BE YOUR FAVORITE STORE!

# Go to the Races





**GIANT TIDE**  
DETERGENT  
49-OZ. BOX  
**99¢**  
SAVE 70¢ WITH COUPON AND 5.00 PURCHASE



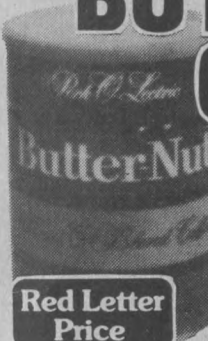
**CORN ON THE COB**  
GREEN GIANT  
4-EAR PKG.  
**89¢**  
SAVE 20¢



**FOOD KING  
LARGE BREAD**  
PREMIUM  
24-OZ. LOAF  
• WHITE  
• SANDWICH  
• GIANT SANDWICH  
**49¢**  
Manager's Special



**KRAFT  
MIRACLE WHIP**  
32-OZ. JAR  
**89¢**  
SAVE 16¢  
Manager's Special



**BUTTER-NUT  
COFFEE**  
ALL GRINDS  
1-LB. CAN  
**2<sup>34</sup>**  
Red Letter Price

**Red Letter Price** **HI HO CRACKERS**  
SUNSHINE • 16-OZ. PKG. • **SAVE 2¢** ..... **89¢**

**Red Letter Price** **WINDEX** GLASS CLEANER  
22-OZ. BOTTLE WITH TRIGGER ..... **1<sup>02</sup>**

**Red Letter Price** **BOWL CLEANER**  
VANISH • 34-OZ. CAN ..... **87¢**

**Red Letter Price** **DOG FOOD**  
CYCLE • ALL VARIETIES • 14-OZ. CAN ..... **35¢**



**BLUE BONNET  
MARGARINE**  
STICK  
QUARTERS  
1-LB. PKG.  
**45¢**  
SAVE 15¢  
Manager's Special



**DORITOS  
TORTILLA CHIPS**  
7-OZ. PKG.  
• REG.  
• TACO  
• NACHO  
**69¢**  
Red Letter Price



**6 PAK  
PEPSI COLA**  
REG. OR  
DIET  
12-OZ. CANS  
**1<sup>49</sup>**  
Red Letter Price

**Red Letter Price** **COOKING OIL**  
SUNLITE • 16-OZ. BTL. .... **77¢**

**Red Letter Price** **VIENNA SAUSAGE** **49¢**  
LIBBY'S • 5-OZ. PKG. ....

**Red Letter Price** **TATER TOTS** **99¢**  
ORE-IDA • 2-LB. BAG .....

**Red Letter Price** **BAR-B-Q SAUCE** **73¢**  
HEINZ • SMOKED • W/ONION • 16-OZ. BTL. ....



**MOTT'S  
APPLE SAUCE**  
25-OZ. JAR  
**67¢**  
Red Letter Price



**DAWN  
LIQUID**  
DETERGENT  
32-OZ. BTL.  
INCLUDES  
20¢ OFF LABEL  
**1<sup>09</sup>**  
SAVE 16¢  
Manager's Special



**GOLDEN GRAIN  
RICE-A-RONI**  
Beef Flavor  
ALL VARIETIES  
7.5-OZ. PKG.  
**49¢**  
Manager's Special


**NEW! LOWER LIQUOR PRICES!**

AVAILABLE AT ALL OUR STORES  
IN THE  
GREATER SANTA BARBARA AREA


AVAILABLE AT ALL CALLE REAL, PACIFIC  
OAK RD. STORES IN GOLETA AND CLIFF DRIVE  
SANTA BARBARA AND OXNARD STORES

## OLYMPIA BEER

## POPOV VODKA



**OLYMPIA  
BEER**  
12  
PAK  
12-OZ. CANS  
**2<sup>99</sup>**  
SAVE 60¢



**80-PROOF  
750-ML.  
25.4-OZ. BTL.**  
**3<sup>59</sup>**  
SAVE 40¢

**RIUNITE LAMBRUSCO** OR BIANCO **2<sup>69</sup>**  
FROM ITALY • 24-OZ. BTL. • SAVE 30¢ .....

**GORDON'S GIN** SAVE 50¢ **4<sup>79</sup>**  
DISTILLED LONDON DRY • 750-ML. • 25.4-OZ. BTL. ....

**GALLO CHABLIS BLANC** SAVE 46¢ **2<sup>59</sup>**  
HEARTY BURGUNDY • 1.5-LITER • 50.7-OZ. BTL. ....

**RONRICO RUM** SAVE 68¢ **4<sup>69</sup>**  
• GOLD • WHITE • 80-PR. 750-ML. • 25.4-OZ. BTL. ....

**ALMADEN MT. WINES** SAVE 46¢ **2<sup>99</sup>**  
NECTAR ROSE • RHINE • 1.5-LITER • 50.7-OZ. BTL. ....

**SEAGRAM'S V.O.** SAVE 1.20 **6<sup>79</sup>**  
CANADIAN WHISKY • 750-ML. • 25.4-OZ. BTL. ....

**PAUL MASSON** SAVE 46¢ **4<sup>79</sup>**  
EMERALD DRY • RHINE CASTLE • 1.5-LITER • 50.7-OZ. BTL. ....

**INGLENOOK NAVALLE** SAVE 30¢ **3<sup>29</sup>**  
CHENIN BLANC • FR. COLOMBARD • 1.5-LITER • 50.7-OZ. BTL.

**COME IN...BROWSE...WE HAVE A  
LARGE SELECTION OF SPIRITS  
TO PLEASE YOU!**

10% DISCOUNT NOT APPLICABLE TO ADVERTISED SPECIALS



**OPEN LINE  
TO ALICE  
964-4073**

**ALICE SEELY  
CONSUMER ADVISOR  
TO THE PRESIDENT  
OF SMITH'S FOOD KING**

Take the pressure off your food dollar...

Now's the perfect time to take a look backward and see how our mothers and grandmothers managed when meat was less plentiful (and more expensive in relationship to income) than it is now. We'll probably discover some terrific old time favorites that pleased "dear old Dad."

\*Next time you make a meatloaf, stuff it. Roll out your meatloaf mixture on a sheet of wax paper, spread with a good stuffing, roll like a

jelly roll, and bake. A pound of hamburger never went so far. It can go even farther if you top each slice with thick gravy.

\*Make a beef stew, doubling the amount of vegetables. Instead of cutting your beef in chunks, slice it very thin. To do this, freeze it partially and cut with a very sharp knife. Serve the stew with biscuits to get the goodness of all the gravy.

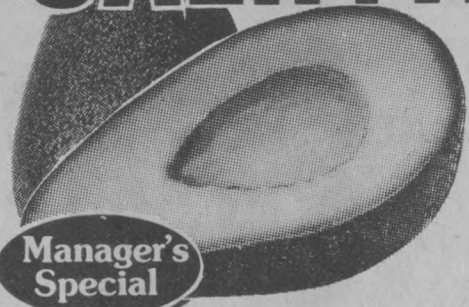
\*Serve meatless, but high-protein, meals by searching out casserole recipes which call for combinations of rice, beans, cheese, eggs and nuts. Proteins in these foods complement each other, making complete proteins like those found in meats.

To help with the ideas, I'll have recipes for fish souffle, lasagne, cheese omelet and a cheese and rice bake on my menu sheets this week. Pick yours up at your neighborhood Smith's. And, if you want further ideas or suggestions, please call me. We want to be your favorite store.



# FINEST QUALITY PRODUCE

## CALIF. AVOCADOS



BUTTERY  
SMOOTH

**4** \$**1**  
FOR

Manager's  
Special

Manager's Special ALFALFA SPROUTS 39¢  
4-OZ. BAG EA.

## HONEY DEW MELONS



SWEET  
AND  
RIPE

**3** 9¢  
LB.

Manager's  
Special

Manager's Special FRUIT ROLLS 3 FOR \$1  
GROCER'S CHOICE • 1-OZ. PKG.

## SWEET CORN

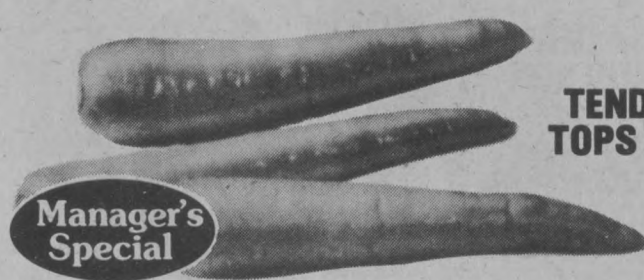


TENDER  
EARS

**5** \$**1**  
FOR

Manager's  
Special

## SWEET CARROTS



TENDER  
TOPS OFF

**6** \$**1**  
LBS

Manager's  
Special

Manager's Special FRESH CILANTRO 15¢  
TENDER BUNCHES EA.

## ROMAINE LETTUCE



GREAT  
FOR  
SALADS

**1** 9¢  
EA.

Manager's  
Special

Manager's Special SUNFLOWER SEEDS 79¢  
1-LB. BAG

## ANJOU PEARS

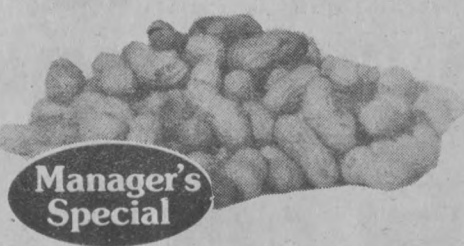


SWEET  
AND  
JUICY

**3** 9¢  
LB.

Manager's  
Special

## BULK PEANUTS



FRESH  
ROASTED  
•  
A BASEBALL  
TREAT!

**7** 9¢  
LB.

Manager's  
Special

## NAVEL ORANGES



PURE GOLD  
EASY TO  
PEEL

**3** \$**1**  
LBS

Manager's  
Special

### PLANT AND FLOWER BOUTIQUE

#### CYCLAMENS

PLANT OF  
THE WEEK!  
•  
6-INCH  
SIZE POT

**3** 29  
EA.

Manager's  
Special

#### PRAYER PLANTS



FOR  
PALM  
SUNDAY  
•  
4-INCH  
SIZE POTS

**1** 39  
EA.

Manager's  
Special

#### NEANTHEBELLA PALMS



4-INCH  
SIZE POT

**1** 49  
EA.

Manager's  
Special

Manager's Special COLORFUL MUMS 3 89  
FLORIST QUALITY • 6-INCH SIZE POT EA.

Manager's Special HOUSE PLANTS 59¢  
ASSORTED • 3-INCH POT EA.

Manager's Special POTTING SOIL 2 19  
ANGEL CITY • 8-QT. BAG EA.

### SERVICE DELICATESSEN

AVAILABLE ONLY AT MANHATTAN  
BEACH • PALM SPRINGS • LOS FELIZ  
HILLS • PALM DESERT • SEAL BEACH



#### FRIED CHICKEN

READY  
TO  
EAT

**1** 99  
LB.

Manager's  
Special



Manager's Special POTATO SALAD 79¢  
FRESH MADE LB.

Manager's Special SWISS CHEESE 3 49  
KANBURA IMPORTED LB.

Manager's Special BEEF STICK 1 89  
OLD WISCONSIN 1/4-LB.

PARTY PLATTERS AVAILABLE  
PHONE US...TODAY!  
LET US DO THE WORK FOR YOU!

WE WELCOME  
USDA  
FOOD  
STAMP  
SHOPPERS

EXPRESS  
CHECKSTAND  
OPEN  
DURING  
BUSY TIMES

### LOW DISCOUNT PRICES IN NON-FOODS



#### SHAKE AN EGG

THE NEW FUN WAY TO COLOR EASTER EGGS  
JUST DROP AN EGG INTO THE BAG WITH MAGIC  
CRYSTALS, SHAKE AND YOU'LL HAVE BEAUTIFUL  
BRIGHT EASTER EGGS! KIT WILL DO 3-DOZ. EGGS  
A COMPLETE SELLOUT LAST YEAR SO HURRY IN.....

**1** 79



#### EASTER GRASS

BRIGHT GREEN GRASS TO HELP YOU MAKE  
YOUR OWN EASTER BASKETS • NON-FLAMMABLE  
FOR SAFETY • CAN ALSO BE USED TO MAKE  
COLORFUL EASTER DECORATIONS.....

**5** 9¢



#### TILT ANGLE BROOM

PLASTIC BRISTLES ARE FEATHERED TO REALLY  
PICK UP DUST • MODERN ANGLE GETS IN THOSE  
HARD TO REACH CORNERS • RINSES CLEAN  
IN LUKE WARM WATER.....

**1** 99



#### PRELL SHAMPOO

LIQUID PRELL IN THE NEW 3.5-OZ. SHATTER PROOF  
BOTTLE • PRELL CLEANS GENTLY TO BRING OUT  
THE NATURAL BEAUTY OF YOUR HAIR • A BIG  
30% OFF LABEL MAKES THIS A SUPER VALUE.....

**5** 8¢