



Nexus Photo by Dave Dalton

The Angry Tenants Action Coalition will sponsor a noon rally in Storke Plaza on Proposition 13, its impact on rents and a possible rent strike. Late last quarter, members of ATAC, pictured above, demonstrated in front of the UCen before marching to Isla Vista.

'Angry Tenants' Hold Rally to Discuss Possible Rent Strike

By JOHN M. WILKENS

In an attempt to increase and monitor tenant awareness, the Angry Tenants Action Coalition will hold a rally in Storke Plaza today at noon.

The rally will focus on Proposition 13, its effects on Isla Vista rents, and a possible mass withholding of rents by I.V. tenants.

According to a study done by Neal Linson, property taxes in I.V. decreased by a total of over

\$727,000 as a result of Proposition 13. (Tax figures for individual pieces of property are included in today's Nexus.)

Despite the savings produced by Proposition 13, few landlords have passed on any type of rebate, and in most cases, rent has been increased.

The climax of the rally today will be a vote taken to find out how many Isla Vista tenants would support a mass withholding of rent.

According to Linson, tenants will be asked to pledge their April rent to the mass withholding. The money collected will be placed in an escrow account at the Isla Vista Credit Union.

In addition, those tenants withholding their rent will be able to sign a form letter which explains why they are not paying. This letter will then be sent to the tenant's landlord.

Linson said that the rally will feature three speakers, each concentrating on a specific aspect of rent withholding. John

Gilderbloom will discuss the history of past rent strikes (including one in I.V. in 1975).

A second speaker will talk about the legal ramifications of rent withholding, and the last speaker will talk about the present efforts of ATAC.

A mass withholding of rent, according to Linson, will enable tenants to voice their demands to landlords to pass along Proposition 13 tax savings.

This massive rent "strike" is the idealistic goal. Linson said that it is more important for the rally to make an "orchestrated statement" to I.V. landlords.

If tenants do not want to withhold their rent, Linson said that they can still join in the protest by waiting until the last day possible to pay their rent (most leases allow a five day "grace" period for rent payment).

Linson, who has investigated the I.V. housing situation for almost two years, said that ATAC currently has about 25 regular members.

Will Renegotiate MTD Terminates UCSB Contract

By CATHY KELLY

MTD recently terminated their contract with UCSB in order to renegotiate the terms of their agreement.

Because contractual terms regarding student fees are included as part of A.S. funding it is necessary to dissolve the contract before negotiations are possible.

Currently, the MTD contract requires that \$3.00 of the \$16.25 per quarter A.S. fee goes to MTD to provide students with "free" bus service upon presentation of a registration card to the bus driver.

A task force will meet with MTD sometime this spring to redraft the contract, providing that UCSB students approve a fee increase of \$1.20 a quarter.

"It is important to remember that the contract was cancelled in order to rewrite it, not in order to stop service," said Sherry Studley, A.S. representative to the task force. However, if the fee increase is not approved by both A.S. and GSA, the bus service will be discontinued at the end of Spring Quarter.

Dispute over the contract originally arose when MTD announced that due to inflation and a decrease in federal funding, they would be implementing a fee increase.

"Our main concern in the past was that the university not get screwed by paying more than the rest of the community," said Paula Rudolph, A.S. Director.

The increase does however, correspond to the general 40 percent increase being imposed on the rest of the community. Studley described the proposed fee hike as an "equitable raise, and entirely reasonable."

According to Fred Young of the GSA Executive Committee, graduate students are also generally in favor of the continuance of bus service, although not necessarily in favor of the recommended fee increase. "Every grad student I talked to is agreeable to the increase," and will raise the fees if it means cancellation of the service," said Young. "There are very mixed opinions on the propriety of a \$1.20 increase. We would like to see a

(Please turn to p.16, col.4)

Regents Radify Faculty Home Loans Program

By JERRY CORNFIELD

A new home loan program directed at helping aid University of California faculty members enter the housing market, is currently in the final development stages. The process may be completed soon, setting the stage for possible implementation within 90 days.

The proposal was ratified at the March 15 U.C. Board of Regents meeting and is just one innovation being pursued to help ease the difficulties new and prospective faculty members face in buying a home.

Bob Kroes, Assistant Vice-Chancellor of Administrative Affairs hopes the program will boost future teacher recruitment to the U.C. campuses because some faculty members in the past have turned down jobs citing their inability to purchase a house as a reason.

According to Kores, the final details are being worked out in U.C. President David Saxon's office. Kroes verified the necessity of such a program at this school.

Under the new program loans will be made only for owner occupied, single family residences. The program will lend faculty members up to 95 percent of a home's purchase price or \$135,000

(Please turn to p.16, col.1)

Violators Face Bike School, Increased Fines

By RICHARD PIEDMONTE

Bicycle riders who violate the law now face stiff new penalties, but will have the option to attend a Bicycle Violators' class administered by the County Bicycle Safety Project.

Last month, the Municipal Court began enforcing bicycle violation fines of \$20 for the third. The primary reasons for the increased fines were due to the increased potential harm in bicycle moving violations, according to Pat Wheatley, Bike Safety Project Coordinator.

"This is a very positive alternative," Wheatley said. The offender will be given a slip in which to contact the police department if they wish to attend the school, and will be required to attend within two months of the offense.

No other adult bicycle schools exist in the nation, according to Wheatley. The classes began last month.

Wheatley stressed that the school is not aimed at educating people about the ordinances covering bicycle operation, and that "going to the school to get out of paying a fine was not our objective at all."

Sergeant Tony Alvarez of the UCSB Campus Police, co-designer of the class elaborated saying, "Eighty to 90 percent of the time, a person knows the law they've violated. We have to look elsewhere for causes. Usually it's a competing demand, more of a

(Please turn to p.16, col.1)

Department Chairs Determine Programs

Teaching Assistant Selection Shrouded in Mystery

By RACHEL WEINTRAUB

The Teaching Assistant selection process in several UCSB academic departments has been termed as both a mysterious and touchy subject.

First in a four part series.

According to a spokesperson from the College of Letters and Science, T.A. selections are "strictly up to the department chairs. We only determine the number of T.A. positions for each department. It is up to the discretion of the department to make its selection policy and its criteria for teaching capacity."

This article examines the T.A. selection process of two departments in the College of Letters and Science: political science and mathematics.

In both the mathematics and political science departments, students interested in applying for a T.A. position are required to fill out a standard application for Graduate Assistantship.

This application includes an

explanation of "All educational institutions attended since high school"; prior teaching, research, or professional experience; a list of two, preferably three persons "from whom you have requested letters of recommendation," and a brief statement of the person's intellectual interest. Graduate Record Exam scores are also recommended.

Both departments receive applications for T.A. positions from students who are doing their Master's graduate work at UCSB and those from other institutions.

According to Professor Charles Akemann, chair of the mathematics department, "Those who seek T.A. positions apply with a formal application that goes along with the other graduate application. Little information other than precisely the courses they have taken and books they have used are important."

He continued, "When they're applying to graduate school, they already have letters of reference, transcripts, and frequently

Graduate Record Exam scores. For the people who are already here, we have the stuff they sent us when they applied, plus their record here. We can also talk to the people who have had them in their classes."

Regarding the T.A. applicants, Professor Stanley Anderson, who chairs the political science department, commented, "We're quite familiar with these students. They're our advanced graduate students who've had a number of seminars. At the end of each seminar, the professor writes an appraisal of each student. This appraisal includes the performance of the student in terms of the seminar paper, and it often includes a characterization of the student's ability to express himself or herself."

"When the time comes for selecting a pool of teaching assistants for the following year, the graduate committee meets together with any other professors who care to join them, and they screen the applications."

Anderson said the committee choosing T.A.'s has "the benefit of the student's entire record, grades, transcripts from earlier schools, recommendations, and individual appraisals in seminars. On the basis of these factors, the students are ranked as to their suitability to become Teaching Assistants."

Both the mathematics and political science departments are allotted a certain number of Full Time Equivalents yearly to fund their T.A. positions. T.A.'s, who are usually hired on a half-time basis, are allowed four years to work in the mathematics department," Akemann said.

He continued, "Last year, we had thirteen and a half FTE, which comes out to twenty-seven teaching assistants. It looks like there are 41 who are getting support in some amount by being Teaching Assistants, Teaching Associates, and Research Assistants. Most of them are supported at half time salary."

Akemann stated that the com-

(Please turn to p.16, col.5)

HEADLINERS

The State

SACRAMENTO — Ten state and county offices yesterday tested their preparedness in the event of a nuclear accident at the Rancho Seco nuclear power plant near Sacramento. A spokesman for Gov. Brown's office said the review was conducted by the State Office of Emergency Services "at Brown's urging, to insure that the people operating those agencies understand their responsibilities and are aware of what they should do" if an accident occurs. Gray Davis, Brown's chief of staff, also said Brown expects a report today from the Nuclear Regulatory Commission on the recent accident near Harrisburg Pa., "and its relevance to California."

SACRAMENTO — Gov. Brown, acting the day before an out-of-state trip, filled 15 of 34 judicial vacancies yesterday. The governor also secured a pledge from Lt. Gov. Mike Curb to make no appointments in his absence. Brown and Curb spoke Friday and reached agreement that Curb would make no appointments during the governor's one-day trip to New Hampshire today. Brown had made 15 appointments by late Saturday and expects to make several more before much more time has passed. Every appointment was cleared with the State Bar, chief of staff Gray Davis said.

NEWPORT BEACH — A Los Angeles County public defender criticized the news media Saturday for focusing on their constitutional rights of criminal defendants. Alan Nierenberg, L.A. public defender also criticized the media for what he said was "ignorance" in legal matters, asserting "You don't know the procedures, you don't know the terminology, you don't know the rules and you don't put it down properly." Nierberg addressed a meeting of news executives attending the 32nd annual California Associated Press Television-Radio Association convention here.

The Nation

HARRISBURG, PA. — Federal officials said last night that the gas bubble inside the crippled nuclear reactor at Three Mile Island is showing signs of becoming potentially explosive, but they disagreed on how soon that may become a problem. Pennsylvania governor Dick Thornburgh appeared with Nuclear Regulatory operations chief, Harold Denton at a press conference on Saturday and spoke about the problem. "Mr. Denton assured me" stated Thornburgh, "that there is no imminent catastrophic event foreseeable at Three Mile Island." On Saturday evening President Carter said he would go to the damaged power plant "In the near future" to make an inspection. Denton, the president's personal representative here, said he agreed with NRC officials in Washington that a chemical reaction within the reactor was slowly adding oxygen to the bubble, causing the possibility of an explosion.

NEW YORK — Three gunmen, spotted by an off-duty officer as they attempted a robbery, held about 40 people hostage in a supermarket for 3½ hours on Saturday before they surrendered to police. Hostages, including men, women, and children, followed the suspects out of the building. No injuries were reported and no shots were fired, police said. The gunmen, armed with a shotgun and a pistol demanded the presence of Spanish-speaking attorneys, a car, proof that reporters were at the scene and that police leave the area during the tense siege.

DECATUR, ILL. — Three circus elephants, broke loose from their trainers Saturday, rammied their way through the doors of a gymnasium arena and escaped onto city streets. Nine people were injured, including a young girl who was picked up by one enraged elephant and thrown to the ground. The elephants roamed the city's west side for two and a half hours, trampling over a wire and iron-railed fence, and kicking in a car, before they were caught.

The World

WEST GERMANY — Anti-nuclear activists shouting, "We all live in Pennsylvania!" rallied in West Germany. There and elsewhere, reactions to the Three Mile Island situation has raised serious questions about nuclear safety in European circles. In Hanover, West Germany, thousands of people attended a rally opposing the planned construction of an underground nuclear dump site, near the town of Gorleben. Police estimated the crowd at 35,000-40,000, but organizers claimed there were more than 100,000 active participants on the rally's route.

SAN JUAN, PUERTO RICO — Maverick Gov. Carlos Romero Barcelo, Puerto Rico's first pro-statehood governor to control both houses of the legislature, is offering voters a tax cut on one hand and statehood on the other. Romero has called for a plebiscite — after the 1980 elections — in which voters will choose whether to keep the island a commonwealth, make it the 51st state, or make it independent. The 46-year-old Yale graduate set off a political hurricane when he announced plans for the plebiscite last year. Rival parties fear the statehood backers will have the advantage if they win control of the legislature and the statehouse for another four years in the next general election.

CAIRO, EGYPT — A former royal palace is being cleaned and a Star of David flag readied for the arrival today of Israeli Prime Minister Menachem Begin. The first state visit to Egypt by an Israeli leader is expected to be marked by tight security measures because of the threats of hardline Arabs to the new Egyptian-Israeli peace treaty. Begin is expected to go by motorcade along a tree-lined road in suburban Cairo to Tahra Palace, eight miles from the airport. The palace, which will serve as Begin's headquarters during his overnight visit, was used as a command post by Sadat in the 1973 Arab-Israeli war for directing Egyptian military operations.

DAILY NEXUS

John M. Wilkens
Editor-in-Chief

Rich Bornstein
Managing Editor
David VanMiddlesworth
Editorials Editor
Rachel Weintraub
Campus Editor

Richard Kearn Yep
News Editor
Michelle Togut
Copy Editor
Meg McCandless
County Editor

Opinions expressed are the individual writer's and none others. Cartoons represent the opinions of the individuals whose names appear thereon. Editorials represent a consensus viewpoint of the Daily Nexus Editorial Board. All items submitted for publication become the property of the Daily Nexus.

The Daily Nexus is published by the Press Council and partially funded through the Associated Students of the University of California, Santa Barbara, Monday through Friday during the regular college year (except examination periods) and weekly during the summer session.

Second Class Postage paid at Santa Barbara, CA and additional mailing offices. Post Office Publication No. USPS 775-300.

Mail subscription price: \$12.50 per year or \$5 per quarter, payable to the Daily Nexus, Thomas M. Storke Student Communications Building, P.O. Box 13402, UCSB, Santa Barbara, CA 93107.

Editorial Offices: 1035 Storke Bldg., Phone 961-2691.
Advertising offices: 1041 Storke Bldg., Phone 961-3829. Gayle Kerr, Advertising Manager.

Printed by the Goleta Today.

CAREER PLANNING & PLACEMENT CENTER SCHEDULE OF ON-CAMPUS INTERVIEWS FOR SUMMER CAMPS

Monday, April 2	Sun Dance Ranch
Wednesday, April 4	Camp Akela
Friday, April 6	Camp JCA
Monday, April 9	Crippled Childrens Society
Tuesday, April 11	Wildwood Summer Day Camp
Thursday, April 12	Camp Kennolyn
	Camp Waponacki
Monday, April 16	Adventure Camp
Tuesday, April 17	Magic Mountain

REGISTER & SIGN-UP AT THE
CAREER PLANNING & PLACEMENT CENTER, BLDG. 427

STILL TIME TO RUN!

'79 - '80

A.S. ELECTION

OFFICES OPEN:

- President
- External Vice-President
- Internal Vice-President
- 9 Off-Campus Representatives
- 3 On-Campus Representatives
- 4 Representatives-at-Large

HOW TO RUN:

1. Pick up Filing Papers in A.S. Office, UCen 3177 8:00 - 5:00
2. Filing Deadline: BEFORE 5:00 April 6th (Friday).
3. Attend Mandatory Meeting (Fri.) April 6th AT 5:00 in UCen 2272.
4. Post \$15.00 Security Bond.

Any ?'s Call A.S. Office 961-2566

GET INVOLVED! RUN FOR OFFICE



Chuck's
STEAK HOUSE
OF HAWAII

Featuring: **Steak, Lobster & Local Halibut**
from 5:30 to 11:00 pm 11:30 Weekends
COCKTAILS SERVED FROM 5 pm
3888 State Street Phone 687-4417

New Bookstore Plan To End Confusion

By LAURA BERGER

The confusion at the University Center Bookstore has begun to subside as construction plans meet completion.

The most visible change is the rearrangement of the Campus Bookstore. All the text books have been moved downstairs, as well as the textbook office. Upstairs, the information desk has been placed in the center of the store, and an entrance has been made out of the old post office.

According to Doug Jensen, Assistant Director of the UCen, there are several reasons behind the textbook move downstairs. "We feel the location of the bookstore on the lower floor will be more convenient to just about everyone," he said. The new arrangement of books leaves less congestion in the aisles and leaves room by the textbook office to ask questions to personnel without getting in the way of other shoppers. "It also means 25 percent more shelf space," Jensen added.

The bookstore is now on the same level as the loading dock, which results in less handling of the books, more efficiency in the filing process, more knowledge of the placement of books by staff, and less cost of moving the books.

The text book shelves have been reorganized to make books easier to find. One student in the bookstore remarked, "You didn't have to trip over T-shirts and general books to find textbooks." Another student stated, "The bookstore is generally much more organized and has more space than in previous years."

Jensen explained that another reason for the textbook move is "to develop more space for general books and merchandise." These items, found on the second floor of the UCen, have also been rearranged to make shopping easier.

"The last few weeks of the winter quarter were really very disruptive for everyone," Jensen admitted. He said this was caused by the total lack of organization in materials throughout the bookstore. During this period shelves were moved downstairs while books were kept upstairs. Jensen recalls that every item in the store was moved at least once. He commended bookstore and UCen employees on their competence and patience.

The bookstore is now totally reorganized and to help students find what they need, the store has issued a map and user's guide, which is available in numerous places around the UCen.

The bookstore, however, is just a part of the UCen II plan. Most of the construction is occurring on the other side of the building. Beams, glass and wires are being installed at a rapid pace in order to have this main construction area completed by fall. This main construction area is the future site for the pavillion that will be located on the east side of the present building.

Nexus Wins Numerous Awards

The *Daily Nexus* and several of its staff members won awards at the California Intercollegiate Press Association conference held last month.

The *Nexus* was named fourth best daily newspaper in California in general excellence. In addition, the paper's arts and sports sections were rated third and fourth, respectively.

Individual staff members also won awards in the mail-in competition. Richard Bornstein captured both an honorable mention and a third place in sports writing.

Karl Mondon took second place for feature photography and an honorable mention for newspaper

graphics.

Tom Bolton was awarded a second place for his editorial on the Halloween mini-riot on Del Playa last October.

Kim Kavanagh and Kim Green won an honorable mention for their news story on the same event.

In the on-the-spot competition, John M. Wilkens and Tom Bolton took first place for front page design, layout and pasteup.

Finally, David VanMiddlesworth captured an honorable mention for editorial writing.

The conference, held in Sacramento, was attended by schools from all over California.

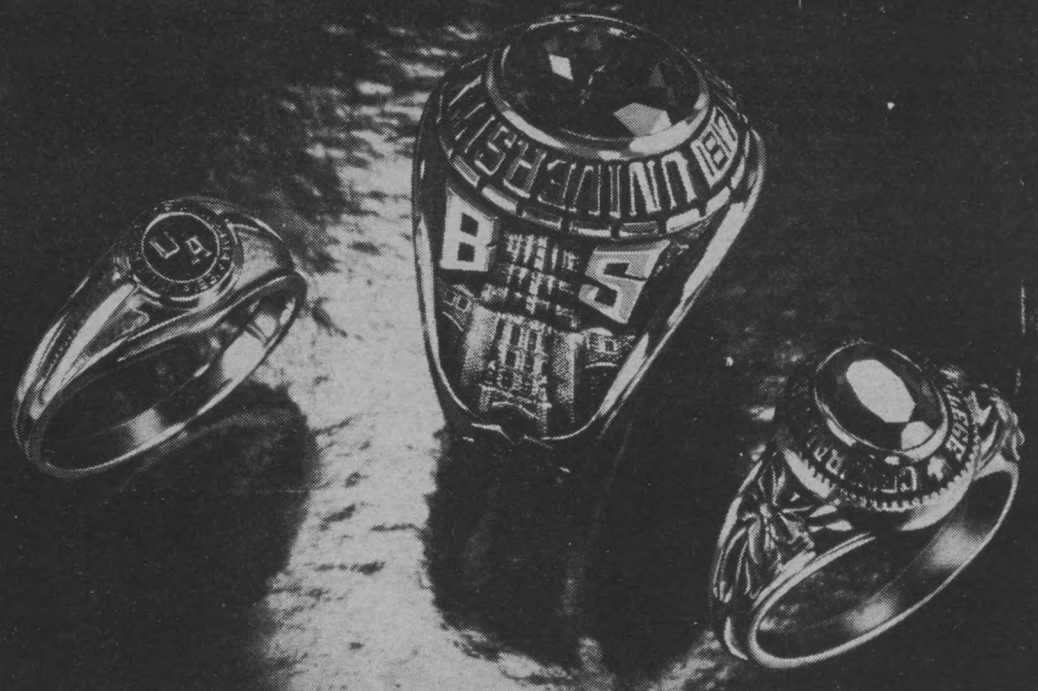


Text books have been moved downstairs as the bookstore portion of UCen II nears completion.

THREE-DAY SALE!

College Ring Sale!

\$64⁹⁵ SAVE \$20*



FREE OPTIONS FOR MEN'S RINGS

FREE OPTIONS FOR WOMEN'S RINGS



ARTCARVED
COLLEGE RINGS

Say a lot about yourself without saying a word.

Save up to \$20 or more on men's traditional Siladium® rings and selected women's 10K gold rings.

You get your choice of the free options shown above, and save money. Take advantage of this great sale on highest quality college rings. See them now. Order yours today.

DEPOSIT REQUIRED. ASK ABOUT MASTER CHARGE OR VISA.

SEE THE ARTCARVED REPRESENTATIVE
*savings vary slightly from style to style.

**Tuesday, April 3
to Thursday, April 5**
Campus Bookstore
University Center

SEE THE BALL LINER FLOAT ACROSS THE PAGE IN ELEPHANT "FOUNTAIN PEN-LIKE" STROKES!

MARVEL AS THE BALL LINER RECAPTURES ALL THE GRACE OF THOSE GREAT PENS OF YESTERYEAR WITH THE INK-ACTION OF TODAY'S MARKER PENS!

Pilot Corporation of America Presents... **SON of FOUNTAIN PEN**

STARRING THE PEN THAT COMBINES THE BEST OF THE OLD AND NEW. THE ONE AND ONLY **PILOT Ball Liner**

BE AMAZED WITH THE STURDINESS OF THE BALL LINER AS IT WRITES THROUGH CARBON PAPER JUST LIKE A HARD BALL POINT!

THE PILOT BALL LINER: A MAGNIFICENT STEP BACKWARD IN WRITING **98¢**

NOW APPEARING AT YOUR BOOK STORE

Pennsylvania Syndrome

Last week's accident at the Three Mile Island nuclear power plant in Pennsylvania once again raises the cloud of suspicion about the reliability of safety systems at such facilities. If nothing else, it should point to the absurdity of the notion that such plants can be designed as "infallible."

Apparently, a valve in the plant's cooling system failed, closing when it should have remained open. There is also evidence that "human error" may have contributed to the accident and subsequent problems. But whatever the cause, it is obvious that, despite elaborate safety and back-up systems, the accident at the Three Mile Island plant caused radiation to leak into the surrounding atmosphere in potentially dangerous doses.

Fortunately, no one was killed in the initial accident, and as yet no injuries or illnesses have been reported. Still, it is of concern to us that neither company nor government officials knew until several hours after the accident that radiation was leaking.

Along the same lines, it took some time before they were able to determine that the reactor's core had been damaged.

We are also concerned with the present, potentially devastating condition involving a gaseous bubble. Attempts to deal with this crisis could cause further explosions and radiation leakage.

The crisis in Pennsylvania is, of course, not the first accident at a U.S. nuclear plant. During an "accident" at the Browns Ferry Nuclear Plant at Decatur, Alabama

in 1975, more than half of the plant's safety systems failed.

As a result, several high level nuclear safety engineers resigned from their jobs. In the words of one of them, nuclear power should be abandoned because, "It's just too big a risk."

In its rush to find alternatives to imported fossil fuels, the United States had adopted nuclear energy as its prize baby, and has been steered toward nuclear proliferation by the Nuclear Regulatory Commission.

Only recently has the NRC begun to acknowledge the potential dangers from nuclear power plants. Five plants were closed a month ago after earthquake safety designs were found to be questionable. We can't help but wonder what other problems may lurk within these atomic giants.

It seems to us that the question of storing atomic waste from these plants, a totally unresolved issue, is reason enough to question nuclear power as a future energy source. Add to that the current questions about safety which the Three Mile Island and other recent accidents have raised, and dumping nuclear power seems the only wise thing to do.

We hope those individuals in positions to effect such change will come to this conclusion, too. The laws of nature and probability dictate that eventually a major accident will occur at a U.S. nuclear power plant. We hope the present trend towards nuclear insanity will be stopped before it comes to that.

Rent Rip-Off

Proposition 13 brought different things for different people.

For most individual homeowners, the measure brought relief in the form of decreased property taxes.

The measure brought decreased property taxes for most Isla Vista landlords, too—a total of over \$700,000 in savings for all Isla Vista properties combined.

And what did Proposition 13 bring for Isla Vista tenants? Few rebates and rent increases.

Proponents of Proposition 13 campaigned for the measure by telling tenants that the decrease in property taxes would induce landlords to pass their savings on to renters.

The measure passed, but the rebates have been virtually non-existent.

For years, rents in I.V. escalated annually, with landlords claiming that increased property taxes were to blame. Now, when property taxes are cut by Proposition 13, it would seem that rebates are in order.

But instead of rebates, rents in Isla Vista increased from 1977-78 to 1978-79 by \$54,627 per month. And now, the new housing lists for 1979-80 show that rents will go up again.

Landlords have offered a number of reasons for not directly passing on Proposition 13 savings: the high turnover of tenants makes it virtually impossible to decide who should receive a rebate,

Proposition 13 savings are being channeled into improvements, and high inflation and a new sewer usage tax (\$110 increase per unit) distort the savings picture.

If we try hard enough, we can almost buy some of these arguments and understand why few Proposition 13 savings have been passed directly on.

What we can't understand is why rents have increased—not once, but twice—since the passage of Proposition 13.

If you are an Isla Vista tenant, chances are that you are being ripped off. So what can you do?

First, you can use the tax figures in today's *Nexus* (pages 10, 11 and 13) to find out how much money your landlord saved in property taxes because of Proposition 13.

Next, attend the rally in Storke Plaza today at noon. Sponsored by the Angry Tenants Action Coalition, the rally will discuss possible ways for tenants to protest and demand some sort of post-Proposition 13 relief.

Not all Isla Vista landlords are ripping students off. Westgate Apartments and Westpac management, for example, have given rebates to their tenants.

Your landlord may have a valid reason for keeping Proposition 13 savings and increasing rents.

You owe it to yourself to at least find out those reasons.

The First Step

On March 26, Egypt and Israel signed a peace treaty in Washington, D.C., which will, in theory, end 30 years of hostility.

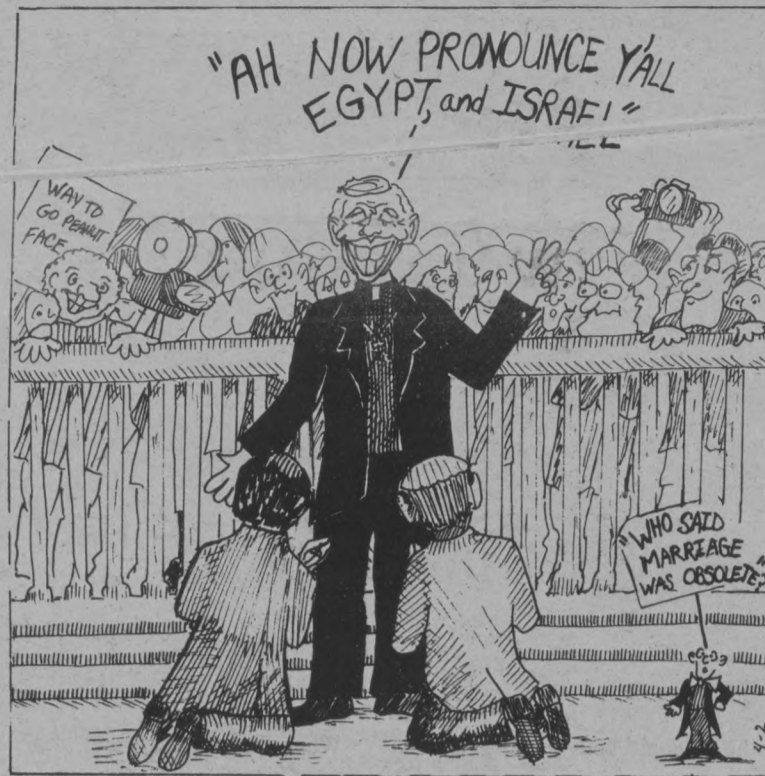
As with any move that takes place in the American political arena, President Carter's work on this problem has been criticized. Some have said that his time should be devoted to solving our domestic problems. Others have complained about the \$5 billion aid package we put together to go with the treaty.

Several of the oil exporting Arab countries have reacted to the treaty with an oil embargo aimed at Egypt. Other more radical Arab leaders have called for

the assassination of Anwar Sadat for his part in the peace making process.

With the world's attention focused on the Middle East the principle actors on this stage will have to put on their best performances. This type of attention can only help expand everyone's understanding of this critical situation.

Not all of the questions surrounding the treaty have been answered, and not all of the problems have been ironed out. But we feel that the heart of the treaty—peace in the Middle East—is worth the monetary and political costs.



Letters

Chance for Change

Editor, Daily Nexus:

This is an open letter to the environmentally concerned:

The public hearings regarding the ability of Diablo Nuclear Power Plant in San Luis Obispo County to withstand an earthquake from the Hosgri Fault ended February 15, 1979. The Nuclear Regulatory Commission (NRC) has by law until May 15 to either approve or reject PG+E's request for a license. If the license is denied, the People of California will have won a great victory. But, if it is granted, we will all be placed in immediate peril.

We do have a course of action. The UCSB People Against Nuclear Power (as part of the state-wide Abalone Alliance) are running non-violent action training workshops. Men and women attending these sessions are preparing themselves for a non-violent blockade of the Diablo plant which will occur within 72 hours of an NRC announcement of approval of the Diablo permit. These people, who may risk arrest (on trespassing charges), are willing to break the law in order that they, their children, and their friends (the other plants and animals on our

Mother Earth) may retain their right to live in an unpoisoned world.

Individuals interested in being part of this action must attend Non-violence training. These sessions will be held every weekend until May 30, beginning April 7-8. The Abalone Alliance needs your creative energy now to help plan an effective blockade. Please call 968-0267 or 968-2886 for information.

We understand that many concerned individuals are not prepared to risk arrest -- This is not prerequisite to becoming involved. We need your help in creating legal demonstrations, providing support for the Diablo action, circulating petitions, and most importantly, informing the public.

By coming together, expressing our concern for one another, our caring, our love, we can create infinitely more light than can PG+E demon Diablo.

We'll walk hand in hand, We shall dance and sing together and deep in my heart, I do believe that we shall overcome.

UCSB People Against Nuclear Power

viewpoint

A Sad Tail

By CRAIG E. CHILDRESS

It wasn't all my idea. I have never been one to use dogs (or any other animal, for that matter) for my own selfish motives. Shanon, my friendly, tail wagging, tongue dripping, golden retriever was just plain bored with the normal classroom activities.

The evil pressures of Calculus were what provoked our first criminal act. It was 2 a.m., the morning of the test. I had lost my class notes and the coffee was already starting to perspire through my pores. In a moment of desperation I called for Shanon and told her to stick out her tongue. Writing math equations on such a slimy surface took a great deal of time (Shanon is an extremely ticklish dog).

The teaching assistant silently passed out the tests. Shanon and I were confident that our devious plan would work. Twenty minutes had passed, and it was time for a little help from my four-legged friend. Shanon leaned over and stretched her math coated tongue across my knee. The prof looked up and caught us in the act!

"Run, Shanon, run!!!"

She sprinted up the aisle, but before she reached the door the prof grabbed her and wrestled her to the floor. Fur flew and glasses broke as the struggle continued. Shanon did just as I had instructed her: she kept her muzzle clamped tight throughout the whole ordeal.

The prof tried to pry open her snout. Needless to say, Shanon overreacted. She did her Rin-Tin-Tin imitation and swallowed the evidence! We rushed her to the vet school, but the interns were too busy milking young bulls to notice my flailing mutt in the waiting room.

Shanon recovered and the rumors of the embarrassing incident faded with time. But the legal battle had just begun. Shanon was subpoenaed to appear before the University Honor Code Board.

The prof claimed that according to the Honor Code the dog should be expelled from the University. I interjected that Shanon hadn't ever read the Honor Code. The committee refused to accept this as plausible evidence because no one else in the class had read the code either, yet they all had

(Please turn to p. 5, col.3)

letters

New Tradition?

Editor, Daily Nexus:

We are definitely in need of change here at UCSB. Many indications, as far as the athletic department is concerned, are that these changes are about to occur. This year under the "New Gaucho Tradition" the basketball team attained new heights. And with the opening of the New Events Facility next fall great attention will be paid to athletic endeavors at this campus. So what am I proposing? Very simply, a new team name.

The term Gaucho no way reflects the student body or the tone of campus. A few years ago Pepperdine changed its name. The smooth sounding "Waves" of Pepperdine have since been dubbed by *Sports Illustrated*, "the Notre Dame of the West."

I'm not saying changing our team name would bring NCAA titles to UCSB. I still believe a "rose by anyother name. . ." What I am saying is that in recent years

apathetic support has often stunted our intercollegiate teams. A new name might well bring a revitalization to the members of this school, as well as members of the various teams.

I've talked over some possibilities, and one seems to find consistant support. What do you think? The University of California at Santa Barbara (UCSB) BREAKERS sounds good to me. Or, how about the Santa Barbara Surf? Well, these are simply suggestions.

What I'm asking you is to head the campaign from your office. Run a survey that can be presented to Dr. Negratti and his staff; find out what the students would like. And maybe after all that work you guys might get a new name too. . . how about the *Daily Breaker*?

Steve Kennedy

Well fans, let us know what you think.

-Ed.



'BILLY CARTER? THET NAME RING A BALE WITH YO' LEROY? CARTER PEANUT WAREHOUSE? WHAH, AH SEEMS TO PLUMB FERGIT WHAR THET IS, DON'T YO', LEROY? MEBBE THESE BOYS IN TH' WRONG TOWN...'

Shanon's Sad Tail

(Continued from p. 4)
refrained from cheating.

I also brought up the fact that the Honor Code specifically states that no student regardless of race, color, religion or species can be discriminated against. The

committee tried to verify my claim but no one could find a copy of the sacred Code.

Shanon was found guilty and nasty signs were nailed to all the lecture hall doors: "Only Seeing Eye Dogs Allowed." The solution was simple: Shanon was going to have to become a seeing eye dog.

We began training immediately, for the next test was less than a week away. We strolled into class the day of the test, Shanon wearing her harness, myself wearing shades. At first Shanon had a hard time keeping the roles straight and kept bumping into chairs and people.

"No, stupid, I'm supposed to be the blind one," I whispered in her ear as we proceeded down the aisle.

Shanon was my messenger. She provided a direct connection to

"Brain Peterson," the smartest student in the class. True, a pigeon would have been more efficient than a 60 pound golden retriever, but we had to keep the operation underground.

Shanon crawled under the seats and sneaked across the room. Her destination: aisle D, seat 21. A few startled groans were heard above the shuffling of test pages as Shanon slithered through the forest of legs and bookbags. She grabbed Peterson's answer sheet and proceeded to crawl back as if she were a soldier crawling through the jungle with a bayonet lodged between her teeth.

A woman screamed. Shanon froze. "A rat just licked my leg!"

A rat? Shanon was insulted. She let out a growl that proved beyond a doubt her doghood as well as her guilt. Shanon was paw-printed and banned from the University for good.

DOONESBURY



When it comes to student services, Bank of America offers a complete course.

If you're looking for the bank that can do the most for you, you'll be impressed with our credentials.

We offer a complete range of student banking services: College Plan® Checking, a wide variety of Savings Plans, and if you qualify, Student BankAmericard® Visa® Instant Cash overdraft protection, educational loans and more.

We also offer Consumer Information Reports to provide you with the kind of straight-to-the-point facts you need to know about banking. Including, "A Guide to Checks and Checking," "How to

Establish Credit," "Ways to Finance an Education," "Rights and Responsibilities: Age 18," and more. You can pick them up free at our branches.

You see, we figure the more you know about banking, the more you're going to want to bank with the bank that can do you the most good, both in school and after.

Quite a few Californians think that's us. If you look over all we have to offer, we think you'll agree.

Depend on us. More California college students do.

BANK OF AMERICA



Benefit to Aid Mentally Retarded

Second Annual FLY-A-THON Sponsored

By MEG MCCANDLESS

The Second Annual Benefit FLY-A-THON will be held on April 7, from 11-2:00 p.m. to aid the Santa Barbara Council for the Retarded.

SBRC is a non-profit organization which serves men-

tally retarded children and adults in south Santa Barbara county.

FLY-A-THON '79 is being sponsored by the Santa Barbara Hang Gliding Association in cooperation with the city of Santa Barbara.

Hang gliders from SBHGA are seeking sponsors who will pledge money to match the air time of the pilots. If a pilot receives a 20 cent per minute pledge, and remains airborne for 30 minutes, he and his sponsor will have raised \$6.00.

Thirty-five pilots participated in last year's FLY-A-THON which raised \$2,400 in pledges. The average air time was 20 minutes. Last year's funds were donated to the South Coast Special Olympics of Santa Barbara.

Money raised in FLY-A-THON '79 will be donated to the Alpha Training Center which is a special project of the Santa Barbara Council for the Retarded.

The ATC is a non-profit, non-residential facility which provides

"life-training, personal attention, direction and training in skills" for mentally retarded adults.

The program at the ATC is aimed towards helping the individual to "attain self respect, drive, a work ethic coupled with work-satisfaction, an ability to make and assume responsibility in daily effort, and self-development."

Many of the individuals who participate in SBCRC programs are only mildly retarded which means that with help from the community and from private agencies like SBCRC, they are capable of living fairly independent lives in the community.

Individuals involved in the ATC program are taught "vocational skills, academic-, conceptual- and community-awareness" as well as

rescriptive physical education. Above all the ATC works to instill in the individual that he or she is somebody and that they will succeed.

Donations raised by SBHGA will be designated for use with people who are enrolled in classes at the Alpha Training Center. In the classes, ATC teaches the individuals to "teach and help themselves and become a part of the community."

People who are interested in sponsoring pilots may contact the event chairperson, Carol Morthole, 684-2013, or Jon Bastain who is in charge of publicity, 968-8872. To sign up, sponsors may stop by the Channel Islands Hang Glider Emporium, located at 613 N. Milpas St.; Low's Radio and TV at 53 Chapala; or Data Press, 415 S. Orange (across from the Goleta post office).

All donations are tax deductible, and legal receipts will be issued or mailed to donors for use in their tax returns for 1980.



SANTA BARBARA — Pilots from the Santa Barbara Hang Gliding Association will be flying Saturday, April 7, in order to raise pledges for the Santa Barbara Council for the Retarded.

THE ALUMNI AFFAIRS OFFICE

South Hall 1431

announces

our office will be open to serve the public from

10:00 a.m. to Noon

and

1:00 p.m. to 5:00 p.m.

KIOSK

TODAY

CAB/SCOUTS: COOKIES ARE HERE!! \$1.25 a box oatmeal, choc. chip, mint, scot-teas, savannahs (Peanut-butter), choc and vanilla creme. Available CAB office — UCen 3rd floor.

U.C.S.B. ACCOUNTING STUDENTS: Volunteer Income Tax Assistance; free income tax preparation; Santa Rosa Dorm "Date Rooms or Study Cubicles" Mon., Tues. 2 to 4; Wed. 3-5; Fri. 10-12; Sat. 1-3; Bring your W-2 forms, interest statements, and see you there.

GRADUATE SCHOOL OF EDUCATION: Register now for the Pre-professional Program. Graduate School of Education; get prerequisite teaching experience with children/young people. 961-3976, Phelps 1178, 8-2.

LIBRARY: Beat the TERM-PAPER-PANIC. Take a tour of the Library's resources. 9:00 am and 1:00 pm, Info Desk, 2nd floor, LIBRARY.

TOMORROW

U.C.S.B. SCUBA CLUB: Meeting on Tuesday at 5:30 pm in Girvetz 1004. Discuss upcoming quarter events and signups for island dives.

CENTER FOR BLACK STUDIES: Seminar: "Black Macho and the Myth of the Super Woman: A Critique" by Rosemary M. Stevenson, Associate Librarian, Black Studies Unit — Library. South Hall 3703, 2:30 pm.

AISH HATORAH CLUB: First Meeting; Lecture "Love 'Jewish Style'"; Guest speaker — Rabbi Zvi Block. 12:00-1:30 pm, UCen 2292.

Lawer Gives Legal Advice to Local Students

By CATHY KELLY

Free legal advice is offered to UCSB students by Santa Barbara attorney Doug Hayes every Tuesday night in the UCen.

According to Hayes, the service is offered to provide legal advice along with explaining possible legal consequences of their actions.

Although landlord-tenant disputes are the most common problems encountered, Hayes has also advised students on traffic violations, personal injury suits, domestic law, drug arrests and paternity suits.

"Whatever they want to know, we are capable of telling them. We don't leave questions unanswered. If we don't have the answer, we refer them to somebody who does," Hayes said.

Hayes went on to say that one of the major difficulties students have when dealing with legal matters is differentiating between legal theory and the practical application of the law.

Hayes pointed out that it is common for a student to consider filing suit over a \$3 fee dispute. Such a suit, he commented, would be of dubious practicality, even though the student may be justified in the eyes of the law.

"Students are very aware of the general notion that they have rights. Too often they're conscious of a general right but don't see the practical side of it. Legal rights are meaningless without a remedy."

Hayes continued to say that one of his main goals in offering legal advice to students is to acquaint them with legal realities.

"Students generally have been within the academic community all their lives. They have very little experience with the rough and tumble world. We want to teach them to take the legal theory and apply it to the human situation. The theory doesn't always work, even though it may sound swell," Hayes said.

Appointments to meet with Hayes can be made through the A.S. office.

A.S. Concerts and KTYD bring you

KALAPANA

IN CONCERT



with special guest

Friday, April 20th
8:00 pm
Campbell Hall - UCSB

One performance only

Reserved Seating

\$5 Student / \$5.50 Non-Student
Tickets available at the OCB Ticket Office, Morninglory Music, Turning Point, and Ticket Express.

READING & WRITING EVALUATIONS

(all services are free)

We have many programs in rapid reading, writing, taking notes, preparation for tests and preparation for pre-professional exams. One-three week classes are held periodically throughout the quarter; we also schedule individual appointments.

During the week of April 2-6, we give reading and writing evaluations. The reading evaluation is a prerequisite for the classes that begin April 11, and 12. The writing evaluation is recommended as an aid for further instruction which is all done individually and can begin immediately.

READING EVALUATION

M, T, W, T: 9:00, 11:00, 1:00 & 3:00

WRITING EVALUATION

T, W, T: 10:00 & 2:00

Academic Skills Center
Bldg. 477

M-F: 8-12, 1-5
961-3269

M.D./D.V.M. In European Medical & Veterinary Schools

The Institute of International Medical Education offers total medical education leading to practice in the U.S.

1. Direct admission into accredited medical schools in Italy and Spain.
2. Master of Science Degree in cooperation with recognized colleges and universities in the U.S. leading to advanced placement in Spanish, Italian or other foreign medical schools or veterinary medical schools.
3. If you are now—or will be—the possessor of an M.S. or Ph.D. Degree in the sciences, we can offer you advanced placement in a European Medical School.
4. Important Notice for Admission into Italian Medical or Veterinary School.
5. PLEASE BE ADVISED THAT STUDENTS INTERESTED IN ATTENDING ITALIAN MEDICAL AND VETERINARY SCHOOLS FOR THE ACADEMIC YEAR 1979-1980, MUST FILE PRE-REGISTRATION FORMS AT THE EARLIEST POSSIBLE DATE TO MAKE DEADLINE DATE ESTABLISHED BY THE ITALIAN GOVERNMENT.
6. WE ARE PREPARED TO AID ALL STUDENTS WHO ARE CONTEMPLATING ATTENDING ITALIAN MEDICAL OR VETERINARY SCHOOLS IN THEIR PRE-REGISTRATION WITH THE ITALIAN GOVERNMENT.

The Institute has been responsible for processing more American students for foreign medical schools than any other organization.

INSTITUTE OF INTERNATIONAL MEDICAL EDUCATION
Chartered by the Regents of the University of the State of New York
3 East 54th Street, New York 10022 (212) 832-2089

CAMP JCA
Resident Camp of the
Jewish Centers Association
of Los Angeles
**INTERVIEWING ON
CAMPUS
FRIDAY, APRIL 6**
Call Student Placement
(961-3081)
for appointment
COUNSELORS•SPECIALISTS
SUPERVISORS
KITCHEN•MAINTENANCE

By BARBARA FRANKLIN

The senate finance subcommittee proceeded through a review of the university's budget for next year and cut out the student affirmative action program money to hire bilingual consultants for small farmers, and the California Writing Project.

For the second year in a row, the three member subcommittee voted to stop state support for the University of California's early outreach, partnership, and student affirmative action program.

The 3-par program which has been funded almost half and half by state money and student fees since its beginning in 1975, has university staff working with teachers in junior high and high schools to identify disadvantaged students with a potential for higher education. The students are then counseled and tutored and given the same services plus financial aid if they are admitted to U.C. later on.

"I guess I should disqualify myself on this vote," said Chair Walter Stiern (D-Bakersfield). "We all have our own prejudices, but I couldn't go out to U.C. because I didn't pass subject A. Today the university is reaching down and offering a helping hand."

"Who told you (U.C.) to cite to the kids the advantages of a U.C. education? Everywhere we turn you say the university doesn't have enough money, but still you have the money to go on with these things that aren't even in your own backyard," he added.

University Vice-President Alice Cox defended the program, now operating in 200 junior high schools. She said the schools are glad to have the university involved, especially since Proposition 13 caused counseling programs in schools to be cut.

"We don't see it as not our mission because one of the missions of the university is to help society solve problems. This is one of the major societal problems," she said.

U.C. Vice President Donald Swain told the legislators if they vote to cut the entire program, it might mean a reduction in financial aid and increases in student fees.

But the senators remained unconvinced and said the fact that student fees are used to fund the program makes the situation even worse.

"If the people in Bakersfield knew you were doing this you'd sure get static," Stiern said, adding "Are you in Bakersfield?"

"Haven't you ever heard of working your way through? My kids did, without help from the state," Senator Lou Cusonovich (R-LA) said.

The vote was 2-0 to cut the funding with Stiern and Cusonovich voting against and Senator Nicholas Petris (D-Berkeley), the third member on the subcommittee absent.

Swain said later that he is "optimistic" about getting the funding restored on the assembly side where the money was replaced last year, in spite of the passage of Proposition 13.

Governor Jerry Brown is recommending the state assume full support for the program, and the legislative analyst is recommending that the state's contribution remain at 55 percent, where it has been since the program began.

U.C.'s request for \$100,000 to hire four bilingual small farm advisors was turned down as well. The advisors would be hired through the university's controversial Cooperative (Agricultural) Extension program which, with a staff of 500 (350 in the counties and the rest on the campuses) works with farmers, 4-H groups and federally funded nutrition groups to solve farming problems.

U.C.'s Cooperative Extension

Affirmative Action Cut

Senate Finance Subcommittee Considers University's Budget

has been charged with racist hiring and operating practices and, in the case of one former employe, agricultural nutritionist Robert Bradfield, mail tampering and other forms of harassment.

The Bradfield case has been an embarrassment for the university and recent charges of cover-up in the investigation of the case still are not settled.

This request to hire farm advisors stemmed from legislative criticism that the university, through mechanization research, was helping only large, corporate growers.

In defending the request, Charles Hess, dean of U.C. Davis' College of Agricultural and Environmental Sciences explained that farmworkers displaced by mechanization have formed "cooperatives" and they need help. Language is a barrier, he said, and "it's a matter of numbers." Hess said the program has 1200 farmers per advisor.

Hess defined a small farm as an

operation that brings in below \$20,000 a year, and said 63 percent or 46,000 of the state's farms fit in this category.

"This would be a trial program with the Spanish speaking. They are in a cost-price squeeze and some attention has to be taken," he said.

But Cusonovich opposed the request. "Do you have to help out every business in the state? Who asked them to get in there?"

The bilingual aspect of the program particularly bothered the senator: "Why doesn't Caesar (Chavez) put his men in there? The Anglos can go broke as long as you take care of the others. How many Anglos are there?" he asked.

But Petris countered, "This is peanuts, they're in the program where they get the millions from mechanization."

The motion to accept the funding failed 2-1 with Cusonovich and Stiern opposed and Petris in favor.

The California Writing Project, which is undergoing review but is

viewed by the legislative analyst and the university to be highly successful, was cut as well.

Brown has rejected the university's request to put the program on permanent state funding because, according to Dean Miller of the State Dept. of Finance, it is not clear the grants that currently support the program are running out.

The legislative analyst, however, has recommended that the state fund the project which trains high school teachers to teach writing.

In defense of the project, its founder, James Gray told the subcommittee that the typical English teacher or elementary school teacher has received training in how to teach reading, but not composition. This is a national problem.

Petris voted in favor but said the schools should assign more reading. Stiern and Cusonovich voted against.

"Why reward the institution

when their product is not able to do the job," Stiern asked.

In other action, the subcommittee voted to fund the Institute of Appropriate Technology. In this program, cut by the subcommittee last year, students obtain small research grants to study alternative technologies that are not harmful to the environment and which reduce dependence on non-renewable resources.

About 30 projects were being worked on during the first year (1977-78). Among them were alternative uses of nitrogen fertilizer, and building of energy-efficient refrigerators and windmills.

The subcommittee voted to accept the analyst's recommendation and give U.C. the \$300,000, included in Brown's budget, for handicapped student services. They will discuss at a later date whether to give U.C. more of its \$1.5 million request, which the university says it needs to comply with federal regulations covering handicapped students.

Miller, of the finance department, told the legislators that his department is working with the Department of Rehabilitation on a uniform funding policy for disabled students at all levels in postsecondary education institutions. A report will be available in April.

A RACY OFFER.



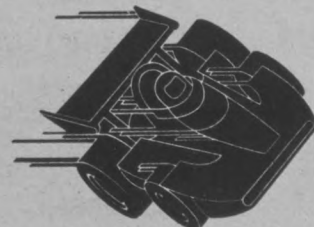
**SAVE UP TO \$10 PER PERSON
AT THE LONG BEACH GRAND PRIX, APRIL 6-8.**

YOUR TOYOTA DEALER PACKAGES THE RACE...

Get set for the action of the exciting, world-famous Long Beach Grand Prix... with a money-saving discount ticket package available only from your Toyota Dealer. Four thrill-packed packages to choose from... you can save on three-day general admission, grandstand seating, garage tour passes, and more! See your Toyota Dealer for details today because discount ticket packages are limited! No product purchase necessary but you must be a licensed driver.

TOYOTA CELICA SUPRA PACES THE RACE...

The incredible new Celica Supra sets the pace for the high-powered Formula One racers. It's the Official Pace Car of the Long Beach Grand Prix. And no wonder! This machine is the combination of power and pleasure the world's been waiting for. For performance: 2.6 liter electronic fuel-injected 6-cylinder engine, 4-wheel power disc brakes, 5-speed manual overdrive transmission, or available 4-speed overdrive automatic with cruise control. For your pleasure: Power steering, tilt steering wheel, power windows, air conditioning, full instrumentation, 4-speaker stereo sound. And far more. All standard. It's an incredible driving experience.



YOU GOT IT.
TOYOTA

CELICA SUPRA, OFFICIAL PACE CAR LONG BEACH GRAND PRIX.

©1979 Toyota Motor Sales, U.S.A., Inc.

"Intelligent discontent is the mainspring of civilization."

— Eugene V. Debs

TONIGHT!
**"Bob and Carol,
 and Ted and Alice"**

6, 8, & 10 pm
 Chem 1179 • \$1.25

Performing Arts
 On Tour at
 UCSB

Presented by UCSB Committee on Arts and Lectures.
 Tickets at UCSB Arts & Lectures Ticket Office, Lobero
 Theatre and Ticket Bureau. For Group Sales Only Call: 961-
 2080. (Spring 1979)

All Events 8 p.m., Reserved seats, Campbell Hall
 (unless otherwise indicated)

TUES., APRIL 3 & WED., APRIL 4
PILOBOLUS DANCE THEATRE
 (Two performances/
 different program each evening)
 \$4.00/\$5.00/\$6.00

FRI., APRIL 6
LES MENESTRIERS
 (early music ensemble from France)
 \$3.50/\$4.50/\$5.50

MON., APRIL 9
OHIO BALLET
 Heinz Poll, Director
 \$3.50/\$4.50/\$5.50

WED., APRIL 18
"BULLSHOT CRUMMOND"
 (by the LOW MOAN SPECTACULAR)
 \$3.50/\$4.50/\$5.50

FRI., APRIL 20
AEOLIAN CHAMBER PLAYERS
 (20th Century Music Series)
 8:00 p.m., Lotte Lehmann Hall
 (unreserved) \$2.50/\$3.50/\$4.50

SAT., APRIL 21
AEOLIAN CHAMBER PLAYERS
 (Concert Series)
 \$2.50/\$3.50/\$4.50

THURS., APRIL 26
"MY SPECIALTY IS BEING RIGHT"
 An Evening with GEORGE BERNARD SHAW
 Performed by Edwin Pettet
 8:00 p.m., Lotte Lehmann Hall
 (unreserved) \$2.50/\$3.50/\$4.50

FRI., APRIL 27
**NEW ENGLAND CONSERVATORY
 RAGTIME ENSEMBLE**
 Gunther Schuller, conductor
 \$4.50/\$5.50/\$6.50

SUN., APRIL 29
"UPROOTED"
 Starring Carmen Zapata
 2:30 p.m., Campbell Hall
 \$2.00/\$3.00/\$4.00

TUES., MAY 1
"COSI FAN TUTTE"
 (by the UCLA OPERA THEATRE)
 \$2.50/\$3.50/\$4.50

FRI., MAY 4 & SAT., MAY 5
JOYCE TRISLER DANSCOMPANY
 (Two performances/
 different program each evening)
 \$2.50/\$3.50/\$4.50

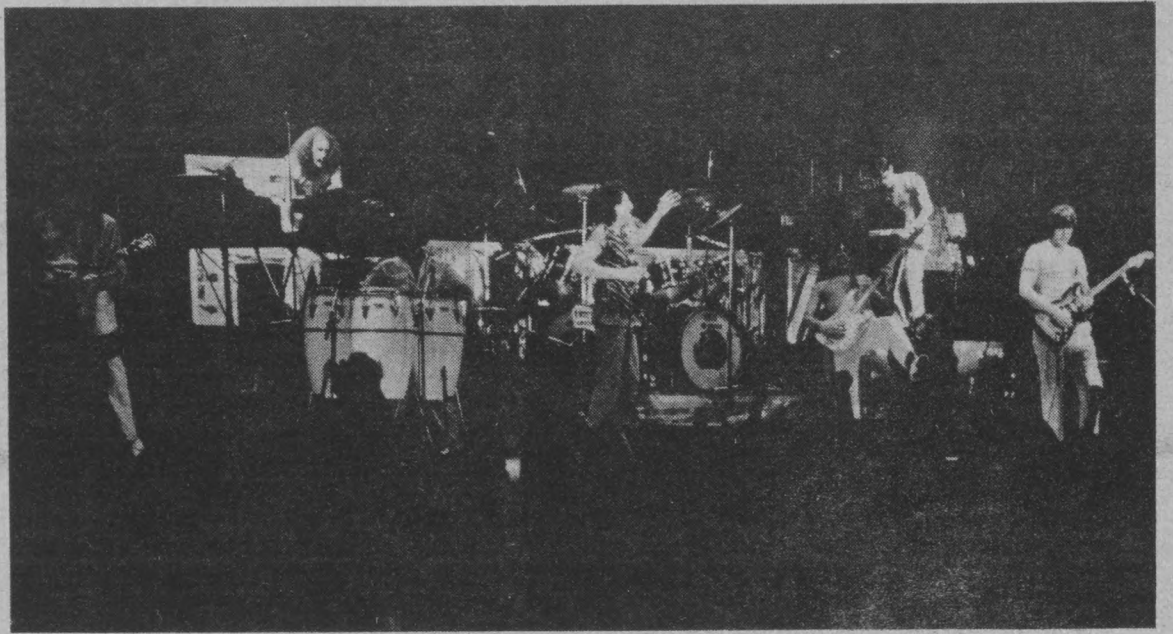
TUES., MAY 8
EMANUEL AX, pianist
 (Concert Series)
 \$3.50/\$4.50/\$5.50

FRI., MAY 11
"AN ACT OF IMAGINATION"
 by ITP, resident ensemble of CTG,
 Mark Taper Forum
 General Audience Performance
 \$2.50/\$3.50/\$4.50

SAT., MAY 12
"AN ACT OF IMAGINATION"
 Children's Matinee
 3:00 p.m., Campbell Hall
 (unreserved) \$2.00/\$3.00/\$4.00

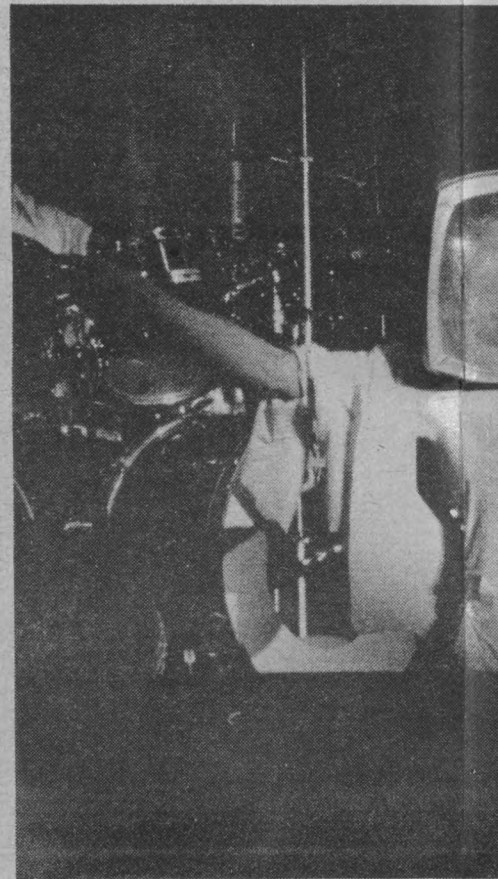
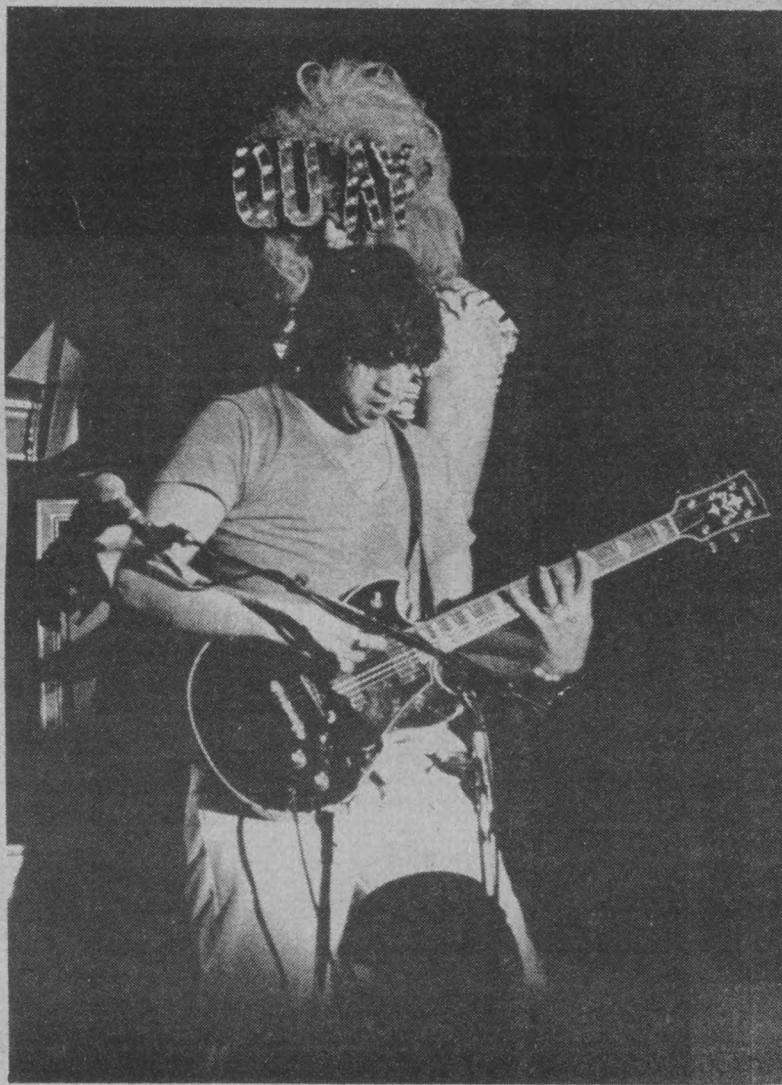
WED., MAY 16
"AFTERSHOCK"
 musical revue by the
 Inner City Cultural Center
 \$2.00/\$3.00/\$4.00

"White Punks



An Evening

with



*if you have to go to Hell...
 go for a reason.*

**The Devil
 in Miss Jones**

STARRING GEORGINA SPELVIN
NO CHILDREN - ADULTS ONLY

**Tomorrow
 Night**
 Showtimes:
 6:30, 8,
 9:30, 11 pm
 Chem 1179
 \$1.50

**The New
 "GOING SURFIN"**

New Sequences-New Narration-New Stereo Music
 One of the hottest surf films of all time is being improved! "Going
 Surfin" will have new sequences, new narration and a beautiful stereo sound
 track.

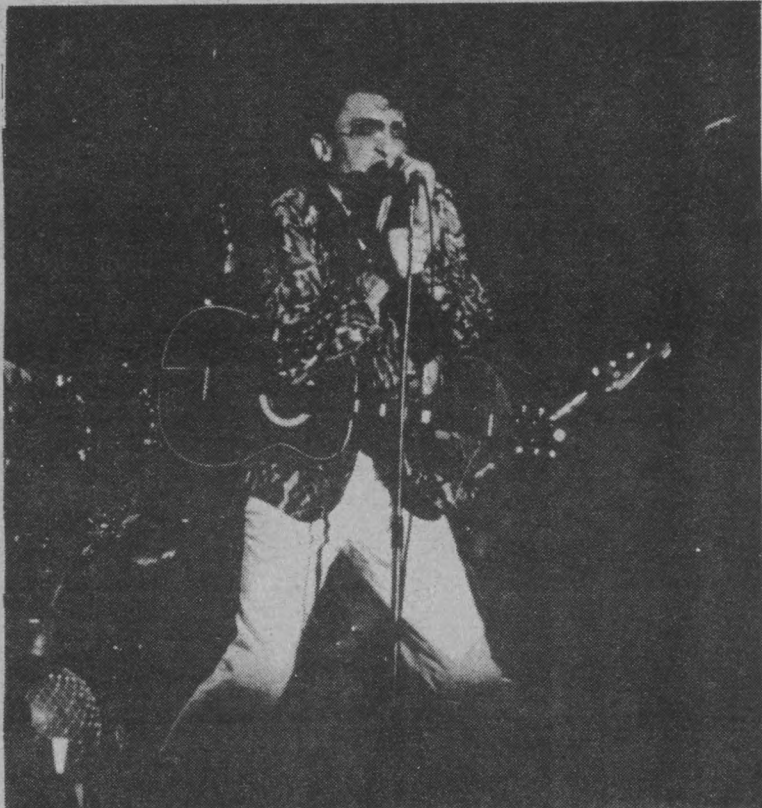
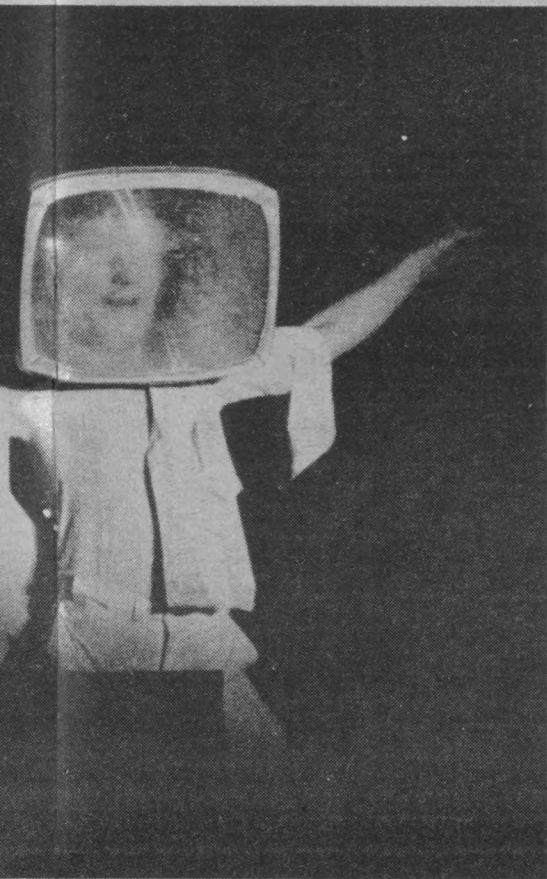
**Thursday, April 5
 Campbell Hall • 6-8-10 pm • \$3.00**

Photos by Dave Dalton

S on Dope...



the Tubes



Pilobolus

DANCE THEATRE

*In residence at UCSB April 2-4, 1979

"As zany as the Marx Brothers, as clever as Houdini
... closer to sculpture than dance." — Newsweek

Two Different Performances!

Tues., April 3 & Wed., April 4
8 p.m. — UCSB Campbell Hall

Reserved Seating: \$4 Students/\$5 UCSB Faculty & Staff/
\$6 General Public. Tickets: UCSB Arts & Lectures Ticket
Office, Lobero Theatre, Ticket Bureau. *Co-sponsors:
UCSB Committee on Arts & Lectures and UC Intercampus
Cultural Exchange Committee, in cooperation with the
California Arts Council and supported, in part, by funds
from the National Endowment for the Arts.

966-4045
GRANADA
1216 State Street

the China Syndrome
JACK LEMMON
JANE FONDA
MICHAEL DOUGLAS

2nd SMASH WEEK

966-9382
Arlington Center
1317 State Street

For Current
Program Information—
Please Call Theatre

966-2479
STATE
1217 State Street

9 Academy
Award Nominations

ROBERT
DE NIRO
THE
**DEER
HUNTER**

RIVIERA
Near Santa Barbara Mission
Opposite El Encanto Hotel
965-6188

"A WONDERFUL FILM"
—Rex Reed
Franco Brusati's
**BREAD and
CHOCOLATE**

TONIGHT, 7:00, 9:30 (PG)

682-4936
PLAZA De Oro
349 South
Hitchcock Way

Let
the sun
shine in!

HAIR

The Film... United Artists (PG)

682-4936
PLAZA De Oro
349 South
Hitchcock Way

4 Academy
Award Nominations

Ellen
Burstyn
Alan
Alda
"Same Time,
Next Year"

967-9447
CINEMA #1
6050 Hollister Ave.

9 Academy Award
Nominations

**HEAVEN
CAN WAIT**
WARREN
BEATTY
JULIE
CHRISTIE

967-9447
CINEMA #2
6050 Hollister Ave.

4th SMASH WEEK

"A smashing cerebral thriller."
BRUCE WILLIAMSON, Playboy
**MURDER
BY
DEGREE**
AVCO EMBASSY
PICTURES Release (PG)

967-0744
FAIRVIEW #1
251 N. Fairview

The original Space Man! (PG)

967-0744
FAIRVIEW #2
251 N. Fairview

John Travolta

IT IS NOW
RATED PG
**SATURDAY NIGHT
FEVER**
...Catch it.

964-8377
Airport DRIVE-IN
Hollister and Fairview

PLUS: "American
Hot Wax" (PG)

IT IS NOW
RATED PG
**SATURDAY NIGHT
FEVER**
...Catch it. A Paramount Picture

TWIN DRIVE-IN 1
Memorial Hwy. at Kellogg/Coleta
964-9400

plus: "GONE IN
SIXTY SECONDS" (PG)

He fought to the death
with Bruce Lee...
Chuck Norris is back
as John T. Booker
**GOOD GUYS
WEAR BLACK**

TWIN DRIVE-IN 2
Memorial Hwy. at Kellogg/Coleta
964-9400

PLUS:
"THE MANITOU" (R)

Theatre I
7:15, 8:45

968-3366
**Magic Lantern
Twin Theatres**
960 E. Barcadero Del Norte

Theatre II
7:00, 8:35

Filmed Live in
Concert!
RICHARD PRYOR
uncensored (R)

INGRID BERGMAN LIV ULLMAN
*Autumn
Sonata*
NEW WORLD PICTURES (PG)

BASKIN ROBBINS
31
ICE CREAM
BASKIN
ROBBINS
ICE CREAM
3749 Calle Real
Nitely til 11. Fri & Sat til Midnite

PROPERTY	TAX '77-78	TAX '78-79	CHANGE
6616 Abrego	9254.40	6420.26	2833.14
6621 Abrego	21627.32	13860.40	7766.92
6632 Abrego	8257.56	5050.28	3207.30
6639 Abrego	1625.28	877.64	747.64
6640 Abrego	1230.10	693.54	536.56
6643 Abrego	21561.82	11595.72	9966.10
6647 Abrego	1846.76	687.64	1159.12
6650 Abrego	20852.38	13502.88	7349.50
6653 Abrego	1600.72	936.56	664.16
6654 Abrego	7944.46	4409.32	3535.14
6655 Abregc	1598.05	912.22	685.87
6657 Abrego	1589.16	902.82	686.34
6659 Abrego	1583.56	1010.72	572.86
6660 Abrego	8512.52	5223.64	3288.88
6665 Abrego	2709.30	1788.52	920.78
6672 ,6690 Abrego	34179.14	25141.72	9037.42
6679 Abrego	5554.64	3348.72	2205.92
6691 Abrego	6808.84	3939.54	2869.30
6706 Abrego	27957.76	24355.42	3562.36
6753 Abrego	14755.16	6839.28	7915.88
6778 Abrego	5696.28	3430.36	2265.92
6788 Abrego	5723.88	3438.78	2285.10
6661 Berkshire Terrace	17790.70	13359.78	4430.92
6671 Berkshire Terrace	7683.30	5775.50	1907.80
6681 Berkshire Terrace	9681.46	6730.36	2951.10
820 Casiao Corto	4552.74	2350.06	2202.68
884 Casiao Corto	1625.42	969.22	656.20
930 Casiao Corto	917.26	470.02	447.24
938 Casiao Corto	1823.54	901.08	922.46
956 Casiao Corto	1447.92	751.00	696.92
1016 Casiao Corto	1564.80	664.16	900.64
775 Casiao Del Sur	32637.96	22976.78	9661.18
776 Casiao Del Sur	9254.78	5489.30	3765.48
785 Casiao Del Sur	41141.22	31399.74	9741.48
893,895,897 Casiao Del Sur	4952.02	2528.36	2423.66
922 Casiao Del Sur	2042.80	1298.12	744.68
926 Casiao Del Sur	1649.82	641.88	807.94
948 Casiao Del Sur	1674.50	102.42	572.08
984 Casiao Del Sur	22779.94	12729.10	10050.84
811 Casiao Pescadero	4703.66	2772.82	1930.84
850 Casiao Pescadero	24240.64	19031.14	5209.50
890 Casiao Pescadero	7519.64	4676.00	2843.64
910 Casiao Pescadero	12057.24	9073.32	2983.92
915 Casiao Pescadero	1566.86	1293.04	273.82
925 Casiao Pescadero	1567.04	816.52	750.52
935 Casiao Pescadero	1362.88	723.28	639.60
945 Casiao Pescadero	1368.66	739.40	629.26
1015 Casiao Pescadero	1479.22	785.86	693.36
6520 Cervantes	9260.86	6493.26	2767.60
6567 Cervantes	8440.62	5249.28	3191.34
6521 Cordoba	14220.12	9812.28	4407.84
6548 Cordoba	13793.08	8415.02	5378.06
6553 Cordoba	2848.86	1688.76	1160.10
6559 Cordoba	2621.76	1524.64	1097.12
6575 Cordoba	2845.64	1821.38	1024.26
6583 Cordoba	1289.72	759.66	530.06
6587 Cordoba	2697.42	1322.10	1375.32
6590 Cordoba	2464.22	1472.70	991.50
6591 Cordoba	3120.90	1822.68	1298.22
6595 Cordoba	3277.82	2532.86	744.96
6596 Cordoba	6385.36	3716.38	2668.98
6503 Del Playa	8512.70	366.12	8146.58
6507 Del Playa	1561.62	1126.84	434.78
6508 Del Playa	4569.48	1910.98	2658.50
6511 Del Playa	2189.02	1018.10	1170.92
6512 Del Playa	2008.16	820.02	1188.14
6517 Del Playa	1001.88	622.90	378.98
6521 Del Playa	5367.84	2307.30	3060.54
6524 Del Playa	1686.84	902.10	784.74
6525 Del Playa	4399.24	1877.78	2521.46
6529 Del Playa	5391.30	3159.40	2231.90
6531 Del Playa	5447.98	2329.50	3118.48
6544 Del Playa	938.06	589.88	348.18
6549 Del Playa	2213.88	1128.00	1085.88
6550 Del Playa	966.40	602.06	364.34
6555 Del Playa	1847.84	1014.84	833.00
6561 Del Playa	5692.40	2641.68	3050.72
6562 Del Playa	909.20	775.92	133.28

Property Taxes

PROPERTY	TAX '77-78	TAX '78-79	CHANGE
6563 Del Playa	1085.14	660.60	424.54
6566 Del Playa	2559.54	1180.02	1379.52
6567 Del Playa	2188.06	1104.54	1083.52
6568 Del Playa	2218.92	1023.46	1195.46
6570 Del Playa	4406.58	1996.12	2410.46
6571 Del Playa	1993.36	1319.12	674.24
6574 Del Playa	1725.88	870.58	855.30
6579 Del Playa	1424.96	618.68	806.28
6583 Del Playa	1379.04	804.12	574.92
6584 Del Playa	2218.72	1023.46	1195.26
6587 Del Playa	2413.98	1119.64	1294.34
6589 Del Playa	1707.04	2304.92	-597.88
6594 Del Playa	1930.26	481.00	1449.26
6595 Del Playa	1281.88	751.54	530.34
6596 Del Playa	1821.06	1104.06	717.00
6597 Del Playa	1293.14	763.46	529.68
6606 Del Playa	1907.80	530.34	1377.46
6610 Del Playa	1533.28	1023.94	509.34
6613 Del Playa	1419.90	1087.82	332.08
6618 Del Playa	8526.40	3442.48	5083.92
6619 Del Playa	2655.40	1180.52	1514.88
6622 Del Playa	8525.92	3442.04	5083.88
6623 Del Playa	1731.70	1062.14	669.56
6625 Del Playa	5533.86	2823.26	2710.60
6626 Del Playa	1788.38	903.78	884.60
6632 Del Playa	2160.70	1008.88	1151.82
6637 Del Playa	1093.48	762.14	331.34
6640 Del Playa	1014.78	773.60	241.18
6641 Del Playa	1788.38	427.96	1360.42
6644 Del Playa	1291.66	607.60	684.06
6645 Del Playa	994.74	994.74	0.00
6645 Del Playa	11355.82	4848.58	6507.24
6647 Del Playa	2412.62	1424.02	988.60
6649 Del Playa	1220.82	1033.24	187.58
6650 Del Playa	1220.82	926.74	294.08
6650 Del Playa	9241.60	4023.12	5218.48
6654 Del Playa	2071.82	977.08	1094.74
6658 Del Playa	4262.86	1837.88	2424.98
6662 Del Playa	2213.54	1023.32	1190.22
6663 Del Playa	4258.04	2574.26	1683.78
6665 Del Playa	2501.54	1439.14	1062.40
6671 Del Playa	1281.80	674.32	607.48
6679 Del Playa	2246.30	869.46	1376.84
6681 Del Playa	4123.96	1933.84	2190.12
6685 Del Playa	3832.36	2084.00	1748.36
6686 Del Playa	2043.48	967.80	1075.68
6686 Del Playa	1991.02	698.84	1292.18
6693 Del Playa	2047.24	971.78	1075.46
6694 Del Playa	1851.54	910.02	941.52
6701 Del Playa	2185.88	1281.28	904.60
6702 Del Playa	1760.04	1299.44	460.60
6703 Del Playa	1788.88	717.54	1071.34
6705 Del Playa	2185.70	1061.26	1124.44
6706 Del Playa	2132.36	999.66	1132.70
6707 Del Playa	2416.86	1093.08	1323.78
6709 Del Playa	2416.86	1093.12	1323.60
6712 Del Playa	2416.86	1093.12	1323.60
6716 Del Playa	1764.54	879.94	884.60
6728 Del Playa	2015.80	1486.60	529.20
6736 Del Playa	853.02	549.24	303.78
6741 Del Playa	1906.28	928.30	977.98
6741 Del Playa	2593.64	848.26	1745.38
6742 Del Playa	1730.54	1141.60	588.94
6743 Del Playa	2593.64	848.26	1745.38
6745 Del Playa	4411.14	1863.26	2547.88
6746 Del Playa	1646.66	834.40	812.26
6752 Del Playa	1654.34	846.54	807.80
6754 Del Playa	1646.66	838.40	808.26
6757 Del Playa	6112.34	2555.50	3556.84
6761 Del Playa	4541.82	2798.58	1743.24
6764 Del Playa	1646.66	903.14	743.52
6765 Del Playa	2469.32	1107.06	1362.26
6766 Del Playa	1675.00	825.20	849.80
6767 Del Playa	2754.44	1200.82	1553.62
6772 Del Playa	1849.58	907.72	941.86

PROPERTY	TAX '77-78	TAX '78-79	CHANGE
6777 Del Playa	6384.18	3413.92	2970.26
6779 Del Playa	2474.58	1112.64	1361.94
6782 Del Playa	3554.92	1607.22	1947.70
6794 Del Playa	3414.16	1721.64	1692.52
6823 Del Playa	1423.40	817.22	606.18
6827 Del Playa	1477.94	691.38	786.56
6838 Del Playa	1093.94	661.52	432.42
6850 Del Playa	1278.18	1037.34	240.84
6865 Del Playa	1279.52	748.92	530.60
6866 Del Playa	1065.60	648.32	417.28
6881 Del Playa	1492.12	988.00	504.12
6882 Del Playa	983.40	986.20	-2.80
6888 Del Playa	2270.90	1157.64	1113.06
6894 Del Playa	509.70	575.64	334.06
6525 El Colegio	21555.10	12164.42	9390.68
6543 El Colegio	14671.44	5382.18	5289.26
6585 El Colegio	37060.80	28654.10	8406.70
6657 El Colegio	21361.96	12503.14	8858.82
6667 El Colegio	20652.94	17181.72	3471.22
6689 El Colegio	35655.02	44869.78	-9214.76
6739 El Colegio	22788.86	20632.62	2156.24
6711 El Colegio	28382.94	30703.00	-2320.10
6721 El Colegio	20573.14	20841.62	-268.48
1001 El Embarcadero	1625.66	921.86	702.86
1015 El Embarcadero	1994.56	1117.44	876.82
1000 El Embarcadero	4796.84	3041.46	1755.38
1025 El Embarcadero	1625.32	1040.42	584.90
1026 El Embarcadero	2922.18	1394.52	1527.66
1033 El Embarcadero	1078.76	680.20	398.56
6501 El Greco	5183.14	3047.28	2135.86
6504 El Greco	2837.80	1367.26	1470.54
6508 El Greco	2856.84	1394.56	1462.28
6510 El Greco	2847.32	1367.26	1480.06
6514 El Greco	2445.98	1379.92	1066.06
6517 El Greco	4412.80	2332.60	2080.20
6518 El Greco	3195.22	1639.82	1555.40
6527 El Greco	2979.00	1914.42	1064.58
6529 El Greco	2579.98	1413.84	1166.14
6584 El Greco	7377.92	2673.86	4704.06
6596 El Greco	4042.76	2921.38	1121.38
6514 El Nido	2837.12	1366.72	1470.40
6515 El Nido	1475.92	911.38	564.54
6516 El Nido	2844.80	1374.86	1469.94
6518 El Nido	2844.82	1374.86	1469.96
6517 El Nido	2099.50	985.80	1113.70
6519 El Nido	1419.24	975.24	444.00
6520 El Nido	2844.80	1374.86	1469.94
6524 El Nido	2796.36	1574.92	1221.44
6528 El Nido	2553.68	1167.02	1386.66
6546 El Nido	2837.16	1366.60	1470.36
6556 El Nido	5959.02	5192.34	766.68
734 Embarcadero del Mar	3136.50	1905.86	1230.64
744 Embarcadero del Mar	2979.18	2216.34	762.84
770 Embarcadero del Mar	3433.02	2673.86	759.16
804 Embarcadero del Mar	5125.28	2567.62	2557.66
828 Embarcadero del Mar	3993.10	2428.92	1564.18
833 Embarcadero del Mar	12342.04	7693.92	4648.12
855 Embarcadero del Mar	3848.94	2150.70	1698.24
865 Embarcadero del Mar	2796.36	1574.92	1221.44
876 Embarcadero del Mar	2622.60	1525.52	1097.08
722 Embarcadero del Norte	2979.52	1845.26	1134.26
760 Embarcadero del Norte	5694.66	3207.56	2487.10
781 Embarcadero del Norte	8546.04	5475.68	3070.36
796 Embarcadero del Norte	10964.30	8082.88	2881.42
796 Embarcadero del Norte	9679.72	7244.02	2435.70
807 Embarcadero del Norte	7661.52	4723.64	2937.88
825 Embarcadero del Norte	5124.66	3019.60	2105.06
839 Embarcadero del Norte	2355.94	1963.14	392.80
850 Fortuna Lane	939.62	596.56	343.06
861 Fortuna Lane	696.54	475.94	220.60
873 Fortuna Lane	928.18	860.64	67.54
6835 Fortuna Road	597.42	429.82	167.60
6873 Fortuna Road	925.70	584.20	341.50
6885 Fortuna Road	909.20	919.54	-10.34
6503 Madrid	4552.96	2157.06	2395.90
6504 Madrid	4114.12	2224.00	1890.12
6509 Madrid	4058.62</		

I.V. Tax Information

Do you currently live in an Isla Vista apartment?
 Are you planning on renting in I.V. next year?
 If you answered yes to either question, the property tax figures published in today's Nexus might interest you.

The figures, which run on pages 10, 11 and 13, show property taxes for 1977-78 and for 1978-79 (post-Proposition 13).

The passage of Proposition 13 decreased property taxes in Isla Vista a combined total of over \$700,000. Few landlords, however, have directly passed these savings on to tenants.

Instead, most apartments in Isla Vista had their rents raised between 1977-78 and 1978-79. And new housing lists released last month indicate that rents will go up again next year.

Some I.V. landlords have not given direct monetary rebates, but have channeled Proposition 13 savings into improvements. Many others claim that inflation and sewer use taxes prevent them from passing along any savings.

To use the tax information, first find the address of the property you are interested in (they are listed alphabetically by street name). The first column for that address will be the property taxes for 1977-78. The next column will be the 1978-79 taxes (reflecting Proposition 13 savings).

Finally, the last column shows the change from 1977-78 to 1978-79.

The figures were compiled by Neal Linson from the Santa Barbara County Tax Assessor's Office.

Property Taxes

(Continued from p. 10)

PROPERTY	TAX 77-78	TAX 78-79	CHANGE
6510 Madrid	4129.36	2372.96	1756.40
6518 Madrid	4129.20	2355.64	1763.56
6586 Madrid	2561.30	1528.24	1033.06
6588 Madrid	985.68	465.24	480.44
6589 Madrid	2852.54	1367.20	1485.34
6590 Madrid	861.42	464.40	397.02
6593 Madrid	2837.72	1367.20	1470.52
6594 Madrid	3123.82	1681.74	1442.08
6599 Madrid	2852.54	1688.24	1164.30
6503 Pardall	3045.52	1661.84	1383.68
6505 Pardall	2837.72	1702.96	1134.76
6509 Pardall	2837.74	1367.22	1470.52
6515 Pardall	4539.62	3063.32	1476.30
6605 Pasado	1135.78	671.42	464.36
6606 Pasado	1561.12	806.72	754.40
6611 Pasado	1820.38	897.96	922.42
6615 Pasado	937.04	456.44	480.60
6618 Pasado	1618.14	860.10	758.04
6621 Pasado	1138.66	674.48	464.18
6622 Pasado	1675.00	847.62	827.38
6624 Pasado	1765.54	881.32	884.22
6625 Pasado	1195.36	1262.20	-66.84
6628 Pasado	1765.54	881.32	884.22
6632 Pasado	1312.04	733.34	578.70
6636 Pasado	1561.28	289.12	1272.16
6640 Pasado	1737.20	1299.06	438.14
6643 Pasado	1759.36	1191.32	568.04
6645 Pasado	1277.52	782.36	495.16
6646 Pasado	1476.60	782.88	693.72
6651 Pasado	1167.02	683.70	483.32
6653 Pasado	1135.78	886.52	249.26
6657 Pasado	1135.78	671.42	464.36
6762 Pasado	1618.32	829.14	789.18
6664 Pasado	2268.82	1562.38	1386.44
6665 Pasado	5879.44	5972.06	577.38
6668 Pasado	1675.00	871.46	803.54
6672 Pasado	1646.66	983.14	663.52
6681 Pasado	1816.38	893.60	922.78
6690 Pasado	3292.98	1676.54	1616.44
6695 Pasado	1674.34	847.08	827.26
6709 Pasado	1992.88	955.72	1037.16
6710 Pasado	2894.64	1938.18	956.46
6711 Pasado	2128.18	595.32	1132.86
6715 Pasado	1762.24	877.88	884.36
6721 Pasado	1476.26	526.24	950.02
6724 Pasado	2050.16	574.54	1075.22
6730 Pasado	1371.10	758.68	612.42
6731 Pasado	1306.20	1155.60	150.60
6740 Pasado	1334.04	735.98	598.06
6747 Pasado	1538.70	807.26	731.44
6748 Pasado	1561.62	1149.98	411.64
6750 Pasado	1419.00	1062.86	356.14
6751 Pasado	1646.32	838.14	808.18
6753 Pasado	1567.04	816.52	750.52
6754 Pasado	1086.88	662.40	424.48
6757 Pasado	1759.36	874.22	885.14
6767 Pasado	2950.88	1737.76	1213.08
6766 Pasado	1646.66	838.40	808.26
6771 Pasado	1135.78	671.42	464.36
6775 Pasado	1135.78	887.52	248.26
6777 Pasado	2950.84	1561.10	989.74
6778 Pasado	1740.20	536.38	803.82
6782 Pasado	1618.48	806.86	811.62
6796 Pasado	774.48	528.00	246.48
6865 Pasado	996.56	617.22	379.34
6867 Pasado	968.22	534.30	433.92
6877 Pasado	866.60	560.54	306.06
6891 Pasado	710.80	813.44	-102.64
6894 Pasado	895.04	1195.32	-300.28
6545 Picasso	2979.68	1633.64	1346.04
6555 Picasso	3131.30	2020.40	1110.90
6565 Picasso	2837.80	1367.24	1470.56
6575 Picasso	2837.72	1367.20	1470.52
6585 Picasso	2837.72	1367.20	1470.52
6587 Picasso	2837.20	1280.16	1557.04
6589 Picasso	2553.60	1797.78	755.82
6621 Picasso	7318.26	4408.00	2910.26
6626 Picasso	21371.70	16128.18	5243.52
6631 Picasso	7549.14	5414.30	2134.84
6639 Picasso	6067.90	3775.58	2292.32
6650 Picasso	4418.74	3429.06	989.68
6656 Picasso	4417.82	3429.06	988.76
6662 Picasso	4417.82	3429.06	988.76
6667 Picasso	7918.52	5678.66	2239.86
6668 Picasso	4417.82	3429.06	988.76
6674 Picasso	4417.87	3429.06	988.81
6682 Picasso	4417.82	2566.04	1851.78
6688 Picasso	4417.82	2566.04	1851.78
6694 Picasso	4419.44	2567.54	1851.90
6502 Sabado Tarde	2269.48	1614.96	654.52
6506 Sabado Tarde	2419.72	1456.22	963.50
6505 Sabado Tarde	6681.30	4189.18	2492.12
6510 Sabado Tarde	4172.06	2353.48	1818.60
6511 Sabado Tarde	4555.90	2609.52	1946.38
6514 Sabado Tarde	2561.38	1529.96	1031.42
6515 Sabado Tarde	2844.80	1374.66	1469.94
6518 Sabado Tarde	2837.20	1687.70	1149.50
6519 Sabado Tarde	2844.80	2007.64	837.16
6522 Sabado Tarde	4555.90	2375.96	2179.94
6531 Sabado Tarde	12057.92	8048.48	4009.44
6532 Sabado Tarde	3292.64	1076.28	2216.36
6538 Sabado Tarde	2355.34	1425.60	929.74
6541 Sabado Tarde	710.28	1113.08	-402.80
6542 Sabado Tarde	2561.36	1356.88	1204.48
6554 Sabado Tarde	2844.60	1374.66	1469.94
6565 Sabado Tarde	9494.52	5225.72	4268.80
6567 Sabado Tarde	3600.16	2185.14	1411.02
6568 Sabado Tarde	2703.16	1741.56	961.60
6571 Sabado Tarde	3401.74	1889.82	1511.92
6572 Sabado Tarde	5122.04	2564.32	2557.72

(Please turn to p. 13, col. 1)

LIVING ARTS CLASSES

Non-credit

Register NOW in Recreation Trailer 369 by Rob Gym - Call 961-3738 for more info.

CLASS	FEE	INSTRUCTOR	DAY	TIME
ARTS & CRAFTS				
1. Basketry		Baise	Monday	7-9 PM
2. Calligraphy	\$15	DeFrancis	Wednesday	7-9 PM
3. Drawing, Beginning	\$15	Hackett	Thursday	7-9 PM
4. Drawing, Intermediate	\$15	Hackett	Tuesday	7-9 PM
5. Knitting	\$12	Boyle	Wednesday	7-9 PM
6. Painting - Acrylics	\$15	Hackett	Thursday	5-7 PM
7. Painting - Watercolors	\$15	Singer	Monday	4-6 PM
8. Pottery - Glazing Techniques	\$15	Venaas	Saturday	12-3
9. Pottery - Raku	\$7.50	Venaas	Saturday	12-4 PM
10. Stained Glass, Leaded	\$15	Marshall	Wednesday	3:45-6:15 PM
11. Stained Glass, Copper Foil	\$15	Embrie	Wednesday	7-9:30 PM
MUSIC				
12. Guitar, Beginning I	\$15	Sultan	Monday	4:30-6:30 PM
13. Guitar, Beginning I	\$15	Sultan	Tuesday	7-9 PM
14. Guitar, Beginning II	\$15	Sultan	Monday	7-9 PM
15. Guitar, Beginning II	\$15	Sultan	Tuesday	4:30-6:30 PM
16. Guitar, Intermediate I	\$15	Sultan	Wednesday	4:30-6:30 PM
17. Guitar, Intermediate I	\$15	Sultan	Wednesday	7-9 PM
18. Guitar, Intermediate II	\$15	Sultan	Thursday	4:30-6:30 PM
19. Guitar, Advanced	\$15	Sultan	Thursday	7-9 PM
20. Guitar, Classical	\$15	Meckna	Thursday	7-9 PM
21. Harmonica	\$15	Hackett	Wednesday	7-9 PM
DANCE				
22. Ballet, Beginning	\$15	Bartlett	Tuesday	5-6:30 PM
23. Ballet, Intermediate	\$15	Bartlett	Tuesday	6:30-8 PM
24. Belly Dance, Beginning I	\$15	Amhaz	Monday	4:30-6 PM
25. Belly Dance, Beginning I	\$15	Ossman	Tuesday	5:30-7 PM
26. Belly Dance, Beginning II	\$15	Amaz	Friday	4:30-6 PM
27. Belly Dance, Intermediate	\$15	Ossman	Tuesday	7-8:30 PM
28. Disco I	\$15	Coleman	Monday	5-6:30 PM
29. Disco I	\$15	Coleman	Tuesday	8-9:30 PM
30. Disco II	\$15	Coleman	Monday	8-9:30 PM
31. Disco II	\$15	Coleman	Thursday	7-8:30 PM
32. Modern Dance I	\$15	Spirka	Monday	6:30-8 PM
33. Modern Dance II	\$15	Spirka	Monday	8-9:30 PM
34. Social Dance, Beginning	\$15	Hamilton	Monday	6:30-8 PM
35. Social Dance, Beginning	\$15	Hamilton	Tuesday	8-9:30 PM
36. Social Dance, Intermediate	\$15	Hamilton	Monday	8-9:30 PM
GENERAL INTEREST				
37. Astrology	\$12	Schmidt	Wednesday	7-9 PM
38. Automotives	\$15	Coulson	Tuesday	7-9 PM
39. Chinese Cooking	\$15	Chung	Tuesday	4-6 PM
40. Knitting	\$12	Boyle	Wednesday	7-9 PM
41. Photo, Beginning B & W	\$18	Jeske	Tuesday	7-10 PM
42. Photo, Beginning B & W	\$18	Gridley	Wednesday	3-6 PM
43. Photo, Intermediate B & W	\$18	Werling	Monday	7-9 PM
44. Photo Composition	\$15	Jeske	Thursday	6:30-10:30 PM
45. Photo, Color Slide	\$12	Gridley	Wednesday	7-9 PM
46. Yoga	\$15	Garvin	Wednesday	4:30-6:30 PM
47. Yoga	\$15	Garvin	Wednesday	7-9 PM
48. Yoga	\$15	Garvin	Thursday	4:30-6:30 PM
49. Yoga	\$15	Garvin	Thursday	7-9 PM
PHYSICAL ACTIVITIES				
50. Body Conditioning	\$12	Horodowich	Mon/Wed	5-6 PM
51. Karate, Beginning	\$15	Eaves	Mon/Tues	6-7 PM
52. Karate, Intermediate	\$15	Eaves	Mon/Tues	7-8 PM
53. Sailing Basics I	\$25	Smith	Monday	12:30-2:30 PM
54. Sailing Basics I	\$25	Smith	Wednesday	12:30-2:30 PM
55. Sailing Basics I	\$25	Smith	Wednesday	2:30-4:30 PM
56. Sailing Basics I	\$25	Smith	Thursday	2:30-4:30 PM
57. Sailing Basics I	\$25	Smith	Friday	12:30-2:30 PM
58. Sailing Basics II	\$25	Smith	Monday	2:30-4:30 PM
59. Sailing Basics II	\$25	Smith	Tuesday	2:30-4:30 PM
60. Sailing Basics II	\$25	Smith	Friday	2:30-4:30 PM
61. Sailing Basics II	\$25	Smith	Saturday	12:30-2:30 PM
62. Sailing Racing I	\$25	Smith	Saturday	2:30-4:30 PM
63. Sailing Practice Sessions	\$15/\$25	Smith	Held Concurrently with all Sailing Classes	
64. T'ai Chi, Beginning	\$12	Barton	Monday	6:30-8 PM
65. T'ai Chi, Intermediate	\$12	Barton	Monday	8-9:30 PM
66. Tennis, Beginning	\$15	Winslow	Monday	11-Noon
67. Tennis, Beginning	\$15	Winslow	Monday	4-5 PM
68. Tennis, Beginning	\$15	Winslow	Tuesday	11-Noon
69. Tennis, Beginning	\$15	Winslow	Tuesday	4-5 PM
70. Tennis, Intermediate	\$15	Winslow	Wednesday	11-Noon
71. Tennis, Intermediate	\$15	Winslow	Wednesday	4-5 PM
72. Tennis, Intermediate	\$15	Winslow	Thursday	11-Noon
73. Tennis, Advanced	\$15	Winslow	Thursday	4-5 PM
74. Tennis, Wheelchair	\$15	Parks	Thursday	1-3 PM

Do It Daily

Want to join the students who do it daily? The Daily Nexus needs news writers. Some paying positions are available. See Rich Yep in room 1035-B at the base of Storke Tower.



INTRAMURALS ACTION



Winter Wrap-Up

Cranes, Others Champs

BASKETBALL
Definitely the Cinderella team of IMs, the defending champion Hooping Cranes rose from an astonishing fifth-place league finish to an awesome three-game sweep in the women's basketball play-offs. Despite a dismal 3-3 record, the Cranes were awarded a play-off berth when the fourth-place team dropped from the league.

With their backs to the wall, the dark-horse Cranes never looked back as they soundly defeated the Indy WB team 44-8, annihilated D.G. Strings 49-20, and squeaked by the talented You Clowns 30-29. The final match-up was the best women's basketball game of the season, with the teams tied 18-18 at the half and You Clowns pulling



ahead by as much as three points in the late second half.

Key baskets by Gregory and Garrity, along with some excellent defense by Harding, Fisher, and Pearsall, pulled the Cranes ahead by one point. However, with seconds to go, the Clowns had what appeared to be an easy fastbreak until Gregory broke up the play as the buzzer sounded.

For the second consecutive year, Manu Meyer's volleyball gang from the Rubber Rose Ranch exerted its dominance over an IM team composed of various intercollegiate basketball players.

Men's A
After eliminating Chocolate City in the semi-finals, Cold Sweat continued their domination of men's IM basketball by defeating Lowtown 58-51. Downtown had finished the season in the Open Division in first place, but could not hold off the offensive play of Cold Sweat.

Men's B
One can only speculate as to where Pass Those Shrooms get their energy, but they lasted through five rounds of intense play-offs to claim the Men's B Division title. Red Bluff Bombers finished in second place, with Wait Until Next Year and Warriors tied for third place.

Men's C
Last Sunrise was never

threatened seriously during their quest for the championship. Defeating the Globetrotters 66-46 in the semi-finals warmed up the Sunrise shooters for their 50-32 rout over Pito Players.

SOCCER Women

Given a couple years to get their act together, the Mudslingers have developed a talented IM squad. Soccer has emerged as their specialty as they finished regular season play with a 4-1 record and defeated the Ms. Fits 2-0 in the finals. The victory was an unanticipated upset of a team that had been undefeated all season.

Men's A
Bob Tuler's and Dan Shields' team, Gods, Lords, and "Two" can claim the soccer A Division championship. However, the finals were a disappointment because, for the first time in IM history, the final game in a sport was won by a forfeit. Unfortunately, Club United suffered a schedule mix-up and Gods, Lords, and "Two" were too busy to arrange a make-up match. Club United had recently whipped The Great Heads 5-1 in the semis, while Gods, Lords, and "Two" entered the final round of competition by defeating the Afro-Asians 4-2.

Men's B
Manchester United should be ready to compete in the A Division next year if they can maintain their present level of outstanding play. Yielding a grand total of zero goals during the three play-off games, Manchester United overwhelmed Amalgamated Guano, Unlimited Team Climax and Munchen Gladbach.

COED SOFTBALL A Division

What was billed as a battle of the chawers turned out to be a surprising romp for USTC in the finals as they turned the other cheek and beat the Cracks 12-6. USTC had no trouble demolishing the Crack's defense especially in one inning when they opened up a substantial lead.

B Division

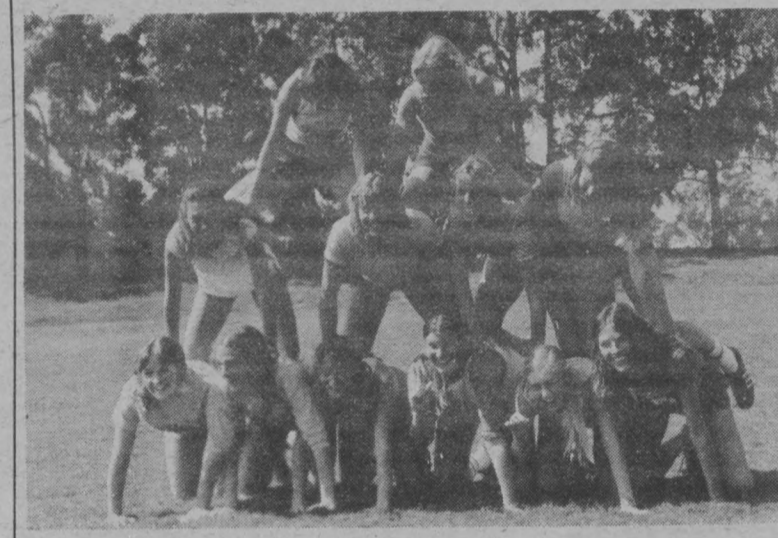
Los Diablos defeated three first-place teams (Grease Lightning, Master Batters, and High Ballers) on their way to winning the B Coed Softball title. Greased Lightning accumulated 37 runs in the first three play-off games but had to settle for second place. High Ballers and Boomers tied for third place.

MORE INFO

Any questions, suggestions, or concerns? We'd love to talk to you! Call us at 961-3253 or visit our office (Trailer No. 304 by Rob Gym) and be greeted by Patty Meck—but don't let her sell you any shoes!



USTC



Mud Slingsers



Manchester United

Officials Needed, Sign-Ups Earlier, All-Cal Tryouts, Frisbee

ANNOUNCEMENTS
Spring Quarter officials are needed for the following intramural sports: softball, floor hockey and innertube waterpolo. In addition, the IM Department will be hiring a new Publicity Director next fall. This spring we will be training someone to fill the position. Anyone interested in applying for the job (preferably a current freshman or sophomore) should see Paul Lee at the IM trailer this week.

SPRING SIGN-UPS

To enable more teams to participate and to create more play time, league competition is starting a week early this quarter. Consequently, sign-ups have been moved up a week — check the schedule for deadlines. Remember, sign-ups occur on a first-come, first-serve basis. Also, when you sign up, be sure to find out when and where the managers' meetings are.

ALL-CAL TRYOUTS

This weekend, April 7-8, a coed

slowpitch tournament will take place on Storke Field. The winners will be the UCSB softball representatives at the All-Cal at UCLA May 18-20. Sign-ups are due by noon, Thursday—entrants should be aware of special All-Cal eligibility specifications.

Rule changes from winter quarter action are (1) teams must consist of at least five men and five women, and (2) pitch to the opposing team according to official slowpitch regulations. We will need umpires for the weekend tournament—anyone interested in officiating come to the office by Thursday.

FRISBEE WORKSHOPS

Due to popular demand, Tom Kennedy and the national champion Santa Barbara Condors will continue to offer Ultimate Frisbee workshops on Storke Field Saturday afternoons. Sessions include both instruction and play. No previous experience or sign-ups are required—merely show up and learn this exciting new sport.

Spring Schedule

MEN/WOMEN LEAGUES	SIGN-UPS BEGIN	SIGN-UPS DUE
M/W Volleyball	April 2nd	Noon April 6th
M/W Fastpitch Softball	April 2nd	Noon April 6th
M/W Slowpitch Softball	April 2nd	Noon April 6th
M/W Floor Hockey	April 2nd	Noon April 6th
M/W Short Basketball	April 2nd	Noon April 12th
COED LEAGUES		
Coed Innertube Waterpolo	April 2nd	Noon April 12th
Coed Tennis Doubles	April 2nd	Noon April 12th
WEEKEND TOURNAMENTS		
All-Cal Qualifying Coed Softball*	April 2nd	Noon April 5th
M/W Over-The-Line	April 16th	Noon April 19th
M/W Surfing	April 23rd	Noon April 26th
IM Track Meet	April 30th	Noon May 3rd
M/W Spring Football	May 7th	Noon May 10th
Coed Volleyball Doubles	May 21st	Noon May 31st

* Intramural Sports Festival At Cal State Long Beach, May 5th & 6th
* All-Cal At UCLA, May 18th, 19th & 20th

It's not whether you win or lose that counts,
It's what you do After the Game!!!

This page sponsored by Pacific Beverage Company.

Acknowledgements

The Intramural staff would like to express appreciation to the Pacific Beverage Distribution Corporation for financing the IM page in the Nexus each month.

Also, we are grateful to the Dal Pozzo Tire Company for the donation of tubes for innertube waterpolo.

This page was prepared by the I.M. Office staff.

(Continued from p. 11)

Property Taxes

PROPERTY	TAX '77-78	TAX '78-79	CHANGE
6573 Sabado Tarde	3472.60	1884.80	1587.80
6576 Sabado Tarde	5106.68	3125.56	1981.12
6582 Sabado Tarde	2533.10	1447.38	1085.72
6583 Sabado Tarde	3401.74	1889.82	1511.92
6592 Sabado Tarde	2844.80	1701.66	1143.14
6593 Sabado Tarde	1022.08	484.22	537.86
6597 Sabado Tarde	2504.76	1473.10	1031.66
6598 Sabado Tarde	2844.80	1720.64	1124.16
6599 Sabado Tarde	2419.72	1346.22	1073.50
6604 Sabado Tarde	1645.98	1361.24	284.74
6605 Sabado Tarde	1589.30	819.36	769.94
6606 Sabado Tarde	766.98	400.98	366.00
6609 Sabado Tarde	1649.82	953.36	696.46
6610 Sabado Tarde	1277.52	1143.62	133.90
6615 Sabado Tarde	3271.98	2348.62	923.36
6616 Sabado Tarde	852.02	687.78	164.24
6617 Sabado Tarde	1589.30	819.36	769.94
6618 Sabado Tarde	2789.46	1217.44	1572.02
6621 Sabado Tarde	1504.26	1046.98	457.28
6625 Sabado Tarde	1475.92	924.08	551.84
6626 Sabado Tarde	1281.36	695.28	586.08
6629 Sabado Tarde	2042.80	1176.08	866.72
6632 Sabado Tarde	908.70	574.56	334.14
6636 Sabado Tarde	1929.42	1285.86	643.56
6638 Sabado Tarde	1078.76	612.34	466.42
6639 Sabado Tarde	1957.78	939.54	1018.24
6643 Sabado Tarde	1848.18	906.54	941.64
6646 Sabado Tarde	1731.36	974.66	756.70
6647 Sabado Tarde	852.02	775.04	76.98
6648 Sabado Tarde	2042.80	1046.98	1095.82
6653 Sabado Tarde	1848.18	906.54	941.64
6654 Sabado Tarde	1649.76	841.80	807.96
6655 Sabado Tarde	1649.76	841.80	807.96
6656 Sabado Tarde	1589.30	1051.44	537.86
6657 Sabado Tarde	1649.76	841.80	807.96
6658 Sabado Tarde	3357.02	2081.94	1275.08
6659 Sabado Tarde	3357.02	2073.80	1283.22
6660 Sabado Tarde	3129.58	1981.62	1147.96
6663 Sabado Tarde	3357.02	2073.80	1283.22
6668 Sabado Tarde	1848.18	906.54	941.64
6685 Sabado Tarde	1848.18	906.54	941.64
6688 Sabado Tarde	1390.88	875.10	515.78
6655 Sabado Tarde	1674.34	1259.68	374.66
6658 Sabado Tarde	1649.44	841.48	807.96
6701 Sabado Tarde	1536.06	804.50	731.56
6702 Sabado Tarde	1649.34	837.62	811.72
6706 Sabado Tarde	1589.30	1349.16	240.14
6707 Sabado Tarde	1933.26	934.36	998.90
6710 Sabado Tarde	1904.92	925.14	979.78
6711 Sabado Tarde	1504.60	1286.64	217.96
6713 Sabado Tarde	1844.40	902.56	941.84
6714 Sabado Tarde	1645.98	1024.10	621.88
6718 Sabado Tarde	2046.64	971.36	1075.28
6722 Sabado Tarde	1277.52	655.22	622.30
6732 Sabado Tarde	1564.74	810.10	754.64
6740 Sabado Tarde	1564.74	810.10	754.64
6741 Sabado Tarde	1135.78	648.96	486.82
6744 Sabado Tarde	1564.80	813.28	751.52
6745 Sabado Tarde	1475.92	835.00	640.92
6748 Sabado Tarde	1560.96	1127.82	433.14
6749 Sabado Tarde	3103.60	1621.00	1482.60
6750 Sabado Tarde	1706.46	868.48	837.98
6751 Sabado Tarde	1483.60	790.50	693.10
6753 Sabado Tarde	1560.96	936.78	624.18
6754 Sabado Tarde	1394.72	824.12	570.60
6758 Sabado Tarde	1589.30	819.36	769.94
6762 Sabado Tarde	1593.14	823.42	769.72
6765 Sabado Tarde	1674.34	847.08	827.26
6766 Sabado Tarde	1589.30	819.36	769.94
6769 Sabado Tarde	4255.18	1437.42	2817.76
6771 Sabado Tarde	1876.92	916.14	960.78
6772 Sabado Tarde	1589.30	819.36	769.94
6778 Sabado Tarde	1649.82	1271.86	377.96
6782 Sabado Tarde	2042.80	1516.56	526.24
6789 Sabado Tarde	1560.96	780.64	780.32
6793 Sabado Tarde	937.72	588.50	349.22
6829 Sabado Tarde	1051.10	641.32	409.78
6837 Sabado Tarde	1065.26	647.96	417.30
6876 Sabado Tarde	1053.48	643.88	409.60
6889 Sabado Tarde	838.52	1213.90	-375.38
6895 Sabado Tarde	881.02	654.58	226.44
6512 Segovia	15638.92	12713.34	2925.58

PROPERTY	TAX '77-78	TAX '78-79	CHANGE
6548 Segovia	2129.36	1136.26	993.10
6552 Segovia	2847.88	1487.90	1359.98
6558 Segovia	2847.88	1636.56	1211.30
6565 Segovia	4644.76	2832.10	1812.66
6575 Segovia	4786.48	2890.22	1896.26
6588 Segovia	5872.30	3480.06	2392.24
6594 Segovia	3844.42	2875.24	969.18
6504 Seville	4256.34	2463.56	1792.78
6503 Seville	4697.50	3113.52	1583.98
6508 Seville	3120.90	1943.58	1177.32
6509 Seville	4414.06	2563.24	1850.82
6512 Seville	3120.90	1655.50	1465.40
6519 Seville	4257.02	3286.68	970.34
6591 Seville	9908.78	5465.30	4443.48
6598 Seville	1217.44	720.60	2465.40
6608 Sueno	4625.74	2281.58	2344.16
6612 Sueno	855.66	428.26	427.40
6615 Sueno	1625.08	836.28	788.80
6621 Sueno	1731.36	1061.80	669.56
6623 Sueno	1625.14	836.36	788.78
6625 Sueno	1277.84	1045.50	232.34
6631 Sueno	1482.16	1051.76	430.40
6634 Sueno	1596.90	827.22	769.68
6637 Sueno	1476.26	1045.50	430.76
6643 Sueno	2071.48	936.48	1135.00
6647 Sueno	1221.00	659.34	561.66
6651 Sueno	1908.50	928.76	979.74
6652 Sueno	3838.06	1659.56	2178.50
6656 Sueno	3695.04	1652.02	2043.02
6657 Sueno	2156.86	1004.60	1152.06
6663 Sueno	1570.60	820.04	750.56
6666 Sueno	1569.70	1044.36	525.34
6669 Sueno	1448.24	745.50	702.74
6673 Sueno	1448.24	751.26	696.98
6674 Sueno	1823.24	900.76	922.48
6677 Sueno	1448.24	1149.98	298.26
6678 Sueno	1823.24	900.76	922.48
6680 Sueno	1618.14	1066.66	551.48
6681 Sueno	1760.04	875.34	884.70
6708, 6716, 6722 Sueno	4938.96	2773.88	2165.08
6737 Sueno	1355.06	755.30	599.76
6746 Sueno	852.18	550.80	301.38
6751 Sueno	2555.70	1046.76	1508.94
6752 Sueno	2128.18	1236.06	892.12
6755 Sueno	1873.42	912.34	961.08
6756 Sueno	1986.46	1173.82	812.64
6759 Sueno	1993.70	956.68	1037.02
6763 Sueno	1795.30	1084.36	710.94
6764 Sueno	1590.14	937.64	652.50
6766 Sueno	1570.24	908.50	661.74
6770 Sueno	1561.80	810.80	751.00
6774 Sueno	1561.62	927.32	634.30
6775 Sueno	1505.10	792.28	712.82
6778 Sueno	824.50	713.34	111.16
6784 Sueno	1788.54	1174.88	613.66
6787 Sueno	1824.86	902.42	922.44
6796 Sueno	1723.40	877.72	845.68
6798 Sueno	1751.74	1021.52	730.22
4501 Trigo	2265.46	1071.20	1194.26
6511 Trigo	2476.40	1474.74	1001.66
6515 Trigo	2476.00	1474.74	1001.26
6517 Trigo	2837.20	2030.90	806.30
6523 Trigo	4397.56	2636.36	1761.20
6553 Trigo	2136.20	1143.74	992.46
6571 Trigo	2901.56	1737.44	1164.12
6575 Trigo	2618.04	1300.42	1317.62
6581 Trigo	2462.24	1447.38	1014.86
6588 Trigo	5121.86	3598.68	1523.18
6597 Trigo	3989.02	2423.70	1565.32
6598 Trigo	4128.96	2454.40	1674.56
6603 Trigo	1645.98	861.92	784.06
6605 Trigo	1957.78	1078.96	878.82
6609 Trigo	1589.30	1273.88	315.42
6610 Trigo	1645.98	1053.38	592.60
6615 Trigo	1986.12	948.62	1037.50
6617 Trigo	1475.92	782.36	693.56
6621 Trigo	1475.92	782.36	693.56
6625 Trigo	1475.92	830.72	645.20
6626 Trigo	1135.78	746.28	389.50
6633 Trigo	2131.68	1115.58	1016.10
6643 Trigo	1476.08	782.50	693.58

PROPERTY	TAX '77-78	TAX '78-79	CHANGE
6645 Trigo	1476.08	782.50	693.58
6647 Trigo	2042.80	1535.24	507.56
6648 Trigo	2667.06	1419.12	1247.94
6649 Trigo	1560.96	1221.62	339.34
6650 Trigo	1844.40	1056.94	787.46
6653 Trigo	1649.76	841.80	807.96
6656 Trigo	1135.78	873.82	261.96
6659 Trigo	1649.76	841.80	807.96
6660 Trigo	1759.36	874.62	884.74
6665 Trigo	1645.98	1236.42	409.56
6669 Trigo	1435.52	830.00	605.52
6670 Trigo	2950.84	1403.98	1546.86
6674 Trigo	2950.84	1403.98	1546.86
6679 Trigo	1589.30	910.58	678.72
6682 Trigo	710.80	812.38	-101.58
6683 Trigo	1589.30	819.36	769.94
6687 Trigo	1986.12	948.82	1037.30
6690 Trigo	1589.30	819.36	769.94
6695 Trigo	3837.52	1551.28	2286.24
6702 Trigo	2956.60	1410.10	1546.50
6705 Trigo	1589.30	819.36	769.94
6706 Trigo	1645.98	837.82	808.16
6707 Trigo	1589.30	873.10	716.20
6711 Trigo	1536.44	972.66	563.78
6720 Trigo	2956.60	1410.10	1546.50
6721 Trigo	1649.82	1365.30	284.52
6729 Trigo	1989.96	952.88	1037.08
6730 Trigo	1589.30	819.36	769.94
6731 Trigo	1564.74	814.08	750.66
6735 Trigo	1560.96	810.10	750.86
6736 Trigo	3950.84	1309.88	2640.96
6745 Trigo	1362.54	986.76	375.78
6746 Trigo	1362.88	1024.98	337.90
6749 Trigo	1560.96	1024.10	536.86
6751 Trigo	1560.96	1174.52	386.44
6753 Trigo	1390.88	732.22	658.66
6757 Trigo	1589.30	819.36	769.94
6760 Trigo	1135.78	875.08	260.70
6761 Trigo	1589.30	1019.58	569.72
6765 Trigo	2959.52	1698.82	1060.70
6768 Trigo	2950.84	1403.98	1546.86
6774 Trigo	2956.60	1403.98	1546.62
6777 Trigo	1879.76	849.88	629.88
6780 Trigo	1879.76	927.46	952.30
6794 Trigo	165.46	881.26	884.20
6808 Trigo	727.38	1003.42	-276.04
6816 Trigo	824.18	1213.36	-389.18
6821 Trigo	1025.12	626.08	399.04
6822 Trigo	1008.40	1057.16	-48.76
6834 Trigo	1022.56	479.54	544.64
6839 Trigo	1079.44	619.26	460.18
6860 Trigo	954.04	597.40	356.64
6867 Trigo	1008.50	621.42	387.08
6892 Trigo	895.04	788.20	106.84

Want to do it daily? Why not join the people who have joined the Daily Nexus? There are currently positions available for news, arts, features and sports writers. Copyreaders and paste-up personnel are also needed. Some paying positions are available. No extensive practical experience is required--just a lot of energy and a willingness to learn. If you've ever thought of getting involved in journalism, now is the time. Come to the Nexus offices at the base of Storke Tower and fill out an application.

WARNING — BICYCLISTS — WARNING

The Santa Barbara-Goleta Municipicle Court has increased fines for bicycle citations.

- \$20 - first offense
- \$30 - second offense
- \$50 - third offense

Drive with care!

WARNING — BICYCLISTS — WARNING



BRUCE STAHL



BRENT KRANTZ

Swimmers Win PCAA Title Despite Relay Disqualification

By HERB HOPS
The UCSB men's swimming team completed a successful and rewarding year by realizing a season long goal in winning the Pacific Coast Athletic Association swimming and diving championships held March 8-10 in Long Beach.

The victory came with a touch of disappointment as a conference and school record breaking per-

formance by UCSB in the competition's final event, the 400 freestyle relay, was disallowed. UCSB was disqualified when a Gaucho swimmer jumped into the pool before all teams had finished. Even without the 32 points this win would have given them, the Gauchos still outdistanced runner-up Pepperdine 472-451.

Every Gaucho scored points, proving the depth of fourth year

head coach Gregg Wilson's squad. Although no one individual could be said to have won the meet for UCSB, two outstanding swimmers were Brent Krantz and Bruce Stahl.

Krantz won both the 100 and 200 backstrokes. He also anchored UCSB's victorious 400 medley relay team, whose other members-David Hendrickson (breast-stroke), Paul Goodridge (butterfly), and Stahl (freestyle), turned in a conference record time of 3:25.7, which qualified them for the NCAA Finals at Cleveland State.

Stahl matched Krantz and went one step better by qualifying for the NCAA competition in both the 50 and 100 freestyle.

Coach Wilson was extremely pleased with his team and said, "We came down to this meet intent on winning it and we did. It's very gratifying to know that the hard work you do all year really pays off."

Next, the Gaucho contingent of Goodridge, Hendrickson, Krantz and Stahl went to Cleveland State to compete in the NCAA finals.

The UCSB medley relay team finished 20th with a clocking of 3:25.00, bettering their conference record time.

Stahl finished 13th in the 50 freestyle event with a time of 20.49, .01 seconds from taking 12th place, a position that would have given UCSB its first ever team point in the NCAA Finals, and also have given Stahl All-American recognition.

Wilson summed up the season with words of praise for his triumphant squad and an eye towards an even loftier goal next season-scoring some points in the NCAA Finals.

Pepperdine Ends Spiker Streak At Seven; Three-Game Sweep

The UCSB Men's Volleyball team, winners of seven straight (including wins over San Diego State, Cal Poly SLO and Long Beach State) came back down to earth Friday night upon absorbing a three game loss of 15-11, 15-9, and 15-11 to the defending national champion Pepperdine Waves at Pepperdine.

UCSB came into the match with seven straight victories and great expectations of adding Pepperdine to their list of victims.

Instead of coming out with fire in their eyes, the Gauchos appeared flat and were unable to take command of the match. Although never ahead, UCSB trailed by only one 11-10, before the Waves flowed to a 15-11 first game win.

The second game found UCSB trailing 14-4 before running off five straight points to lose by a 15-9 score.

In the third, and what proved to be the final game, UCSB jumped out to a 3-0 lead only to see it soon erased in the wake of a decisive 15-11 win for Pepperdine.

UCSB coach Ken Preston was disappointed with his team's performance and was quoted as saying, "We were just flat from start to finish."



UCSB HAD THEIR SEVEN MATCH win streak snapped Friday night at Pepperdine against the Waves.

COUPON

KODAK FILM SPECIAL

KODACOLOR
C110 AND C126
20 EXPOSURE

\$1.51 EA. ROLL
2 rolls only per coupon

Offer Expires April 25, 1979

Kinkos IV
6550 Pardall Rd.
Isla Vista, Ca 968-2165

DISCOVER BONANZA DISCOVER BONANZA DISCOVER BONANZA

DISCOVER BONANZA

DISCOVER DELICIOUS STEAK DINNERS AT REASONABLE PRICES

- Serving lunch and dinner
- Price of your dinner includes salad from Bonanza's Discovery Salad Bar

CHOPPED STEAK DINNER \$2.69
Salad Bar, Potato, Texas Toast

GIANT SALAD BAR

TWO CONVENIENT LOCATIONS:

GOLETA
6030 HOLLISTER • 967-8744

SANTA BARBARA
3614 STATE — 687-8514

101 Freeway Airport Theatre
Golf Center
Tire Shoppe
Fairview
Hollister

State
Ontario

DISCOVER BONANZA DISCOVER BONANZA DISCOVER BONANZA

Women Winning; Johnson to Return

By RICHARD BORNSTEIN
Most coaches would be nervously awaiting the return of their number four player and Darlene Koenig is not the stoic leader of the women's tennis team.

While it appears as if some specially developed therapy will

aid Mary Johnson's return to the Gaucho line-up, Koenig has many enviable options if the number four player cannot successfully return from an ankle injury.

Lindsey Berman and Annette Sofke have more than adequately moved up to fill the loss of Johnson, and maybe the real key to the continued success of the women's team has been the play of Julie Richardson. A seldom-used newcomer a year ago, Richardson, (Please turn to p.15, col.1)

PHOTO DARKROOM (on campus)

Sign up at Bldg. 440, Rm. 106 (Photo Lab) 961-3738

The newly renovated photography facility offers a complete black and white darkroom with many open hours for student use. Equipment includes eight enlargers, a dry mount press, a negative dryer and other necessary small equipment. All chemicals are provided.

A trained darkroom attendant is on hand at all times to assist students with their work. Membership fee for use of the darkroom is \$8.50 per quarter for students and \$12 for all non-students.

April 6 - June 8

Sunday	12 noon - 6 pm
Monday	12 noon - 6 pm
Tuesday	Closed
Wednesday	Closed
Thursday	12 noon - 6 pm
Friday	12 noon - 6 pm
Saturday	12 noon - 6 pm

Hours are Subject to Change

CHEMISTRY MAJORS
To work in our nuclear propulsion division. You must be a U.S. citizen under 26 yrs. old. Start \$14,000 yr.
FOR INFORMATION CALL
213/468-3321
OR SEND RESUME TO:
NAVY NUCLEAR PROPULSION REP.
4727 Wilshire, Ste. 602, L.A. 90010

COUNSELORS
for co-ed summer camp for children in Arizona mountains. Teach swimming (W.S.I.), drama, nature or photography. Apply TODAY Camp Akela at UCSB Placement Center for interview on Wed., April 4th.

Gaucha Nine Splits a Twinbill; Lose First, 10-7; Win Nightcap, 4-3



MIKE WILGUS went all the way in the second game as the Gauchos opened the SCBA season by splitting a doubleheader.

The baseball team, behind another strong pitching performance by Mike Wilgus, gained a split in their doubleheader Saturday with Cal State L.A. UCSB won the nightcap 4-3 after dropping the first game 10-7.

The game opened conference play for both schools. Designated hitter Bob Swann rallied for four singles while third baseman Dave Diaz had two, which helped the Gauchos to seven runs. These seven runs were not enough as UCSB once again had pitching problems; both Don Pierce and Glenn Magpiong being rocked for ten runs.

The nightcap found Wilgus turning in his third complete game this season, retiring the last seven batters he faced. In support of Wilgus in the win were Junior Ford with two singles and a stolen base, and Bob Hendren with a triple and a single.

Now 9-9 overall, and 1-1 in Southern California Baseball Association league play, UCSB was set to play U.C. Irvine on Sunday and highly regarded Cal State Fullerton on Tuesday.

Fresno St., Irvine Top Men's Track Team; Old Records Fall

Head coach Sam Adams said it was a case where the Gauchos were coming off of the quarter break and Fresno State was at their best.

For a variety of reasons, the Bulldogs defeated UCSB, 112¹/₂-50¹/₂ in a dual track meet Saturday at Fresno.

Santa Barbara recorded some top performances in the lopsided loss, those coming from Jamie Starmer, Jim Triplett, Steve Irving, and Wes Hickenbotham.

Starmer won both the 100 meters and 400 meter intermediate hurdles; his times were 10.77 and 53.36. He also placed second in the long jump at 23-2¹/₄, just a quarter-inch off the winning jump.

Triplett won the 3000 meter steeplechase in 9:11.6 and Irving finished second in the 110 meter high hurdles in 14.74. Hickenbotham placed second in the shot-put with a heave of 51-5.

In other meets, UC Irvine defeated UCSB March 10 103-57, as the visiting Anteaters won 16 of 19 events. Lamonte King led Irvine with victories in the long jump, 200 meters and 400 meters.

Rob Ridgway won the high jump with a jump of 6-8¹/₄ for the Gauchos. Mark Hilton won the 1500 meters at 3:52.3 and Starmer the 400 intermediate hurdles at 52.3.

In the UCSB Invitational Match 23, Steve Oravetz from the University of Washington cleared 18 feet, ¹/₄ inch in the pole vault to highlight the meet. He later made three unsuccessful attempts at 18-3.

Triplett and Chris Hughes broke the school 10,000 meter record in the meet. Triplett won the event in 30:33.7, while Hughes was clocked in 30:35.7. The old mark was held by Jeff Rawlilbs, who recorded a 30:39 in 1968.

Women's Tennis Defeats Yale

(Continued from p.14) has been playing in the number six spot and as Koenig says "playing very good tennis for us."

Before the quarter break, the women defeated last year's 20th ranked team in the nation, Yale, on

the West Courts, 7¹/₂-1¹/₂. The win was important for a variety of reasons: Yale is a perennial choice for the nationals, representing the East and by defeating them, the Gauchos gained confidence and a much needed victory over a highly regarded team.

Gloria Faltermeier led the way at number one singles, defeating Diane Pirow, 6-1, 6-2. Debbie Brink defeated Kathy Dolton, 6-1, 6-1, and number three Ellen Metcalf topped Natalya Smith, 4-6, 6-0, 6-1. Berman defeated Celia Moffie, 6-2, 7-5, and Richardson defeated Stacy Reley, 7-5, 6-2. Soffe, however, lost in singles to Caroline McAllister, 6-2, 6-4.

Brink and Faltermeier defeated the team of Dolton-Pitow, 7-5, 6-2, while Jenny Hinchman-Sue Stenzel defeated Eve Ellis-Reley, 7-5, 6-1. Metcalf-Soffe split sets with Moffie-Smith before darkness discontinued play.

Thus, if Johnson is able to play, she will occupy the number four slot, moving Berman down to the more familiar five position. Soffe and Richardson would then play a challenge match to determine the sixth singles spot. Johnson would once again team with Berman in doubles, meaning Soffe would play with Metcalf. The Hinchman-Stenzel duo have been playing well, according to Koenig, and they would probably force a challenge match with one of the other teams.

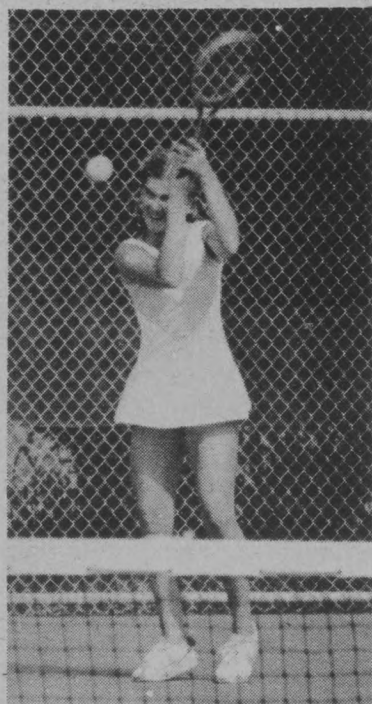
UCSB is now 13-3 overall and 5-0

in the SCAA as they resume play on Thursday against Cal Poly SLO in a conference match. The next day the Gauchos will play Cal State Northridge. Both are conference matches and will be played away.

The Gauchos return home for one of their biggest matches of the season a week from Monday against San Diego State. The Aztecs handed the Gauchos one of their few losses last year, and were angered when UCSB received a National bid over them. This year's match will again have an impact on National qualifying, especially because Pepperdine, another team Santa Barbara received a National bid over, defeated the Gauchos earlier in the season.

Tennis Talk: It looks as if the Gauchos will not get another chance in the regular season against Pepperdine. The Waves cancelled today's scheduled match for unspecified reasons.

Koenig was pleased with the Yale win for many reasons. The coach said the victory left her team with an "up" feeling over the break and she was especially pleased with Metcalf's win over Smith. Smith was the number four player in Northern California.



ELLEN METCALF has been one of the most consistent players on a team that is now 13-3 on the season.



NOTEBOOK BARGAINS!

When was the last time you checked our selection & prices?
NOW IS THE BEST TIME!

Clearance prices on severely overstocked styles.

5 subject with pockets reg. 3.20 SALE *2.50 No. P5250PBW	3 subject 150 sheets reg. 1.50 SALE *1.00 No. 3150BBW	3 subject with pockets reg. 2.30 SALE *2.00 No. P3120KCW
---	--	---

6553 PARDALL RD.

968-3600

Your complete off-campus college store

Hightower Re-Writing Women's Records

Sarah Sweeney and Linda Hightower lowered their own school records Saturday to highlight the individual performances of the women's track team enroute to a split in a Southern California Athletic Association (SCAA) double dual track meet with Cal Poly Pomona and Cal State Northridge at Pauley Track.

UCSB whipped Pomona 85-21, while losing to national power Northridge by a margin of 76-51.

Sweeney, a freshman, broke her own 1500 meter record with a first place time of 4:36.3, 2.4 seconds better than the old mark. Hightower, a junior, knocked 1.5 seconds off her week old 400 meter hurdles record, racing to a first place time of 62.7 seconds.

Julie Thrupp was another

Gaucha victor, capturing the 5000 meters while Lu Ann Morris, Hightower, Sweeney and Roberta Lenard teamed to win the two mile relay.

In an earlier double dual meet on March 24 against Cal State Los Angeles and UC Irvine, the Gauchos again split. UCSB defeated Irvine 124-89, while falling to CSLA 123-106.

Hightower again was a top performer, setting a 400 meters record in a time of 57.4, while running a record 64.0 400 meters hurdles, which she promptly broke last Saturday.

The women's track team, under the coaching of Glenda Guilliams, will travel to Berkeley this weekend to participate in the UC Berkeley Invitational.

UCSB OUTDOOR RECREATION SPRING TRIPS

WILDERNESS FIRST AID

April 27 - 29

OVERNIGHT CAMPOUT

May 5 - 6

WOMEN'S WEEKEND

May 18 - 20

CROSS-COUNTRY SKIING

May 25 - 28

ANACAPA ISLAND

June 2 - 3

HIGH SIERRA'S BACKPACK

June 16 - 23

Check the Leisure Review for fees, dates and details.

EARLY SIGN-UPS ARE ENCOURAGED AS SPACE IS LIMITED.

Bicycle School for Violators

(Continued from p. 1)

demand to get somewhere faster than to follow rules."

Wheatley added, "The traditional focus of traffic schools is not useful (to this project). I don't want to stand in front of a class of 20 university students and tell them you have to stop at a stop sign."

Instead, the focus of the three hours of instruction will be the causes of an accident and will examine the behavior likely to increase a rider's chance of becoming a part of it.

Films will be used, and lecture materials will be based largely on the research of Dr. Kenneth Cross

at Anacapa Researches.

"We're not going to talk just about campus bike riding and problems," Wheatley said. She added, "while no other place in the nation can compete with our bike freeways, this simply intensifies the behavior patterns found nationwide."

The Violators' School does not aim to change bicycle riding behavior completely in three hours, however. "It's up to them," Alvarez claimed. "It's kind of grandiose to go in saying we're going to change their attitudes (toward bike riding). Just by being exposed to this information, most

will identify with accident victims and realize they could easily be injured if they don't cool it."

An integral part of the class proceedings will be the open discussion sessions at the beginning and conclusion of the course. The initial meeting will discuss the feelings of the violators toward the citing officer and the court, past history of bicycle troubles, and will help Alvarez "get an idea of the class' attitude, and decide on the nature and emphasis of the rest of the session."

The final session will try to bring into the open feelings of the students towards the officers. "I'm interested in their suggestions. We don't profess to have all of the answers," Alvarez said. Relations

in this area are "getting a lot better," he added.

"People are getting used to being stopped. But students still sometimes feel they are being picked on, and cannot rationalize the reasons," Alvarez said.

The coordinators expressed a hope that university people would realize the validity of research and the facts behind the school.

MTD Contract...

(Continued from p. 1)

lower figure," added Young.

Both A.S. and GSA representatives expressed concern over the amount of student input a new contract might allow.

According to Studley, MTD seems reluctant to allow student input on scheduling and routing decisions. "We feel that with a new contract we might have less input on routes, night service, etc. We're afraid they will make route changes that will decrease the amount of service," added Bee Hanson of the GSA Executive Committee.

"Attitudes have got to change regarding bike violations; we have an enormous number of contacts of this kind, and we have got other problems on which we would like to concentrate," Alvarez said.

The Bike Violators' school will conduct sessions at least once a month, and more often if necessary to keep each class to below 20 persons.

According to Vice-Chancellor Ed Birch, the elimination of a bus service for UCSB students would be "just a disaster." He is supported by Young, who said, "I would urge grad students to vote on the increase if it is a matter of discontinuance of service."

Studley concluded, "Hopefully we will vote on the increase. Then we can carry on with the service as before."

Selection Process

(Continued from p. 1)

petition for T.A. positions within the mathematics department is not intense. "Sixty to seventy people are graduate students of some sort. When you hire forty, there isn't a lot of competition. A lot of the people who might be here competing aren't here at all because they didn't get offered a position in their first year."

Shauna Clemens, a fifth quarter Teaching Assistant in the mathematics department explained, "There is competition, because there are usually not as many T.A. positions as there are people who would like them."

"Freedom is nothing else but a chance to be better."

Albert Camus

Regents Ratify Faculty Home Loan Program

(Continued from p. 1)

at an approximate eight percent interest rate, which is lower than the current market rate. Initially those eligible for the program will be new teachers (but not visiting lecturers), current full-time university appointees hired in the past seven years, and management and non-academic professional personnel whom must be certified by the school's chancellor and U.C. President Saxon.

"It is great because it will serve the needs of the area," Kroes noted, "Housing is a real problem in Santa Barbara." Kroes acknowledged that attracting new teachers to this campus has been hampered in the recent past with the combination of rising housing costs and the lack of new housing developments.

Ed Blakely, assistant vice-president of academic personnel at Berkeley, is guiding the program toward implementation, and hopes it will be "on the road within 90 days."

Currently underwriters are being sought to buy revenue bonds,

to be deposited with a yet to be named state lending institution. The bonds will finance the loan and repayment process, which the lending company will run.

Blakely anticipates that \$25 million worth of bonds will be needed for the first year, with less being required in ensuing years. No U.C. funds will be required, except in the case of a loan default. In this instance the University would first sell the house, attempting to cover the obligation, and then expend monies from the U.C. surplus funds pool if a shortage remained.

Blakely stated that while the program has "generally received support throughout the U.C. system," he is presently canvassing the campuses to determine the feelings of each school's faculty and administration.

Blakely added, "Several lending institutions are being looked at by the treasurer," and underwriters are being sought to purchase the necessary bonds. With the conclusion of these three concerns, the program will be able to begin.

Blakely admitted that some

concern has been raised by those ineligible faculty members who began work prior to 1972. He stated that by setting the cut-off point where it is, the program will encompass nearly all of those who began working when the housing crisis first exploded.

Maleness a Defect?

(ZNS) Is maleness a type of birth defect?

The *Chicago Tribune* reports that scientists investigating what determines maleness and femaleness have come to the startling conclusion that nature has an almost overpowering tendency to want to make all babies female.

The newspaper says that if it weren't for a newly discovered molecule, called the "ultimate determinant of maleness," which is added to an embryo several weeks after conception, all babies would be girls.

According to *The Tribune*, Dr. Stephen Wachtel of Cornell University discovered the determining male molecule. The fact that fetuses are female until the male molecule is added has been dubbed the "Eve Principle," and is reportedly part of a major upset going on in embryology and genetics circles.

The *Tribune*, quotes one doctor as saying, "It sort of makes the biblical story of creation somewhat backward. A female may have been created first." Doctor Wachtel adds, "You can think of maleness as a type of birth defect. In the beginning we are all headed toward femaleness."



TEXTBOOKS 25% OFF???

We sell so many used textbooks because our customers realize that textbooks are tools — a good clean used book will do the same job as a new one but at a 25% savings over a new copy.

YOU MUST BUY YOUR BOOKS EARLY FOR BEST SELECTION OF USED (& NEW) BOOKS.

*We guarantee all class textbooks we sell (new or used). You will need all "required" books listed on our shelf tag for your class. If not, bring the book(s) back for FULL REFUND.**

* Our refund policy applies to this quarter's class books returned on or before April 14th in the same condition as when purchased accompanied by our cash register receipt... KEEP YOUR RECEIPT!

THINK I.V. BOOKSTORE FOR USED TEXTBOOKS (AT 25% OFF NEW PRICE)

OPEN 'TILL 10 PM
TONITE &
TOMORROW

"Your complete off-campus college store"



6553 PARDALL RD.
in Isla Vista

968-3600