

# Prop 15 Could Mean Disaster for Job Market

By Chris Bowman

SACRAMENTO — Passage of Proposition 15, the nuclear power plant initiative, would arrest California's economic growth and mean "disaster" for the job

"The Social and Economic Effects of Nuclear Energy" is the theme of a forum to be held this evening at 7:30 in the Franklin School Quad Room, 230 North Voluntario Street in Santa Barbara. Sponsored by the Tri-Counties Tom Hayden for U.S. Senate Campaign, admission and refreshments will be free.

The forum is the second in a series of three on different public issues. It will feature four speakers — two on each side of the issue of Proposition 15, the Nuclear Safeguards Initiative.

Gary B. Dutro, of Southern California Edison, and Dr. Robert Odette, UCSB professor on nuclear engineering, will speak in favor of nuclear power as a short and long range energy alternative.

Dr. David Krieger, coordinator of Project Survival, and Patrick Heferman, of the Hayden Campaign, will speak in favor of Proposition 15.

## Passage May Double Unemployment

market, a state agency reported this week.

The Commission for Economic Development, chaired by Lt. Gov. Mervyn Dymally, said Monday that by 1980 California could expect to add between 100,000 and 150,000 to its unemployment rolls if the Nuclear Initiative is approved by voters June 8.

The Commission's staff study focused only on the job impact of Prop. 15. Its conclusions are based on public hearings in February and staff reports.

The Nuclear Initiative will prohibit new construction of atomic power plants in the state until the legislature, by a two-thirds vote, affirms that the industry is capable of meeting rigorous safety standards.

The report said that without adequate electricity for industry, presumed from restriction on nuclear power plants, economic growth, particularly in manufacturing, will "come to a halt by 1980, if not well before."

Thus, California would lose much of its ability to provide new jobs, to handle the increasing labor force, and the current one million members unemployed could double in the 1980's, the report said.

The report concludes: "The adoption of Prop. 15 would substantially inhibit economic growth in California and would represent a disaster for the working men and women of this state."

Dymally said he agrees with the conclusions, but is not taking a stand on Prop. 15 because of safety questions raised by the ballot measure's proponents.

A legislator on the fifteen-member Commission, Assemblyman Floyd Mori (D-Pleasanton), issued a dissenting statement saying the initiative by itself could not be a "significant deterrent to future economic growth."

The Commission held a hearing on the job impact of the nuclear issue February 24, at which nearly all witnesses spoke against the proposition. A major pro-initiative group boycotted the meeting, saying that the membership of the Commission was weighted in favor of power companies.

David Pesonen, chairman of Californians for Nuclear Safeguards, yesterday called the report "a blatant distortion of the facts by a commission that is dominated by utility company executives and others who have spent hundreds of thousands of dollars trying to defeat Prop. 15."

A utility executive on the Commission, Robert Morris of San Diego Gas and Electric Co. took no part in the discussion or decision in the issue, the Commission said.

# DAILY NEXUS

Vol. 56, No. 107

University of California at Santa Barbara

Monday, April 19, 1976

## Post Office Box Dispute

# Additional Fees Within 15 Days Demanded By Postal Service

By Dorothy James

Off-campus holders of post office boxes have received a letter from Santa Barbara postmaster John Niles stating that a \$6 fee has been assessed on the boxes. Dated April 14, the letter serves as notice that the postal service will close all boxes of students who have not paid the additional \$4 in 15 days.

The first paragraph of the letter states that "The U.S. Postal Service has recently arrived at an out of court settlement with the University of California ... regarding post office box rents." Addressed only to off-campus boxholders, the letter does not clarify the fact that the settlement was reached only for dormitory boxholders.

According to A.S. External President Neil Moran, "The way this letter is presented is a lie. No off-campus settlement has been reached."

Moran said that a compromise agreement assessing a \$6 fee on dormitory boxes was made last month. However, no settlement was made for off-campus boxholders.

When confronted with Moran's accusation, Gordon Gilman, director of customer services and a spokesman for Postmaster Niles, said that since a settlement was reached between UCSB's legal counsel Glenn Woods and the Postmaster General in Washington D.C. for dormitory boxholders, the \$6 compromise

would apply to off-campus boxholders as well. Gilman

explained that the settlement would apply to off-campus boxholders because they have no legal representatives.

According to Moran, University Counsel Glenn Woods is the legal representative for off-campus boxholders and is working with A.S. to reach a settlement.

The post office conflict began with a bureaucratic oversight by Santa Barbara post office officials who were unaware that the postmaster general had authorized a 700 percent raise in box rates, from \$2 to \$16.

The Santa Barbara post office assigned boxes to students at the ineffective \$2 rate. Last November the error was caught, and post office officials threatened that if the \$14 difference was not met the boxes would be closed. The stated increase was seen by A.S. as a breach of contract.

Moran will meet with Attorney Woods tomorrow to discuss the letter. Until then, Moran advises off-campus boxholders to demand refunds if they paid the additional \$14 and not to pay the settlement figure of \$4.

## Proposed Santa Barbara County Split Would Create New Los Padres County

By G. Bruce Smith

A proposal to split Santa Barbara county into two separate counties is currently before the Board of Supervisors. The report, entitled "Economic Feasibility of Splitting Santa Barbara County," is a huge volume of statistical data that has been compiled since last summer.

North County Supervisor Harrell Fletcher and County Auditor-Controller Paul E. Floyd have been working on the report, which they say is objective. However, it does indicate areas where the county may be able to save money — up to \$500,000 or more — such as in the county jail and in fire protection procedures.

The proposed boundaries would leave the new county to the north with about 40% of the present population and with only \$348.3 million in assessed valuation. The county to the south would have \$603.5 million, or 63.4 per cent of the assessed valuation.

The plan is in its early stages and these figures could change, depending on discussion of the report by the Board of Supervisors at their April 26 meeting.

The proposed boundary lines are drawn in such a way as to include in the north county (to be called Los Padres), the site of the proposed liquified natural gas complex. Bradbury Dam and Cachuma Reservoir, which supply "cheap" water to the South Coast, would also be included.



TROUBLE OFF THE JUMP — Carol Atkeson ran into troubles last Saturday at the Earl Warren Fairgrounds ...



ABRUPT ENDING — Her mount, Country Music, lost its footing on the jump and rolled across her. Atkeson suffered a fractured arm, broken ribs, and shoulder injuries. The event was the Amateur Honor Jumper Sweepstakes for 15-17 year olds.

photos: Doug McCulloh

## Proposed Santa Barbara County Split Would Create New Los Padres County

Third District Supervisor Slater did not favor the split. "The water supply is in jeopardy by putting it in the hands of supervisors who have no responsibility to south county residents," he stated. Slater pointed out that north county residents could draw the water level down, particularly since they tend to be pro-industrial and push for growth.

Supervisor Fletcher, who has spent eight months on the report, said that Slater "doesn't know what he's talking about," that there would be no change of the water supply, and that the split would not affect the rights of the water in Cachuma. He said there were many such misconceptions of the report.

Nevertheless, Slater felt that the Santa Ynez Valley is connected to the south county both socially and economically. Moreover, he does not favor the split because of the costs involved. Instead, he suggested that "if the people of the south coast are interested in protecting themselves, they should circulate a petition to split the county in another way."

North county residents favor the proposed split, according to Fletcher, because they presently do not have many of the services the south county residents have. Though Fletcher is "still not completely convinced of its feasibility," he feels the county split would be "advantageous economically to both the north and the south."



"If you aren't careful, you forget what the outside world is like" — A student

**A MAJOR QUAKE** may strike southern California in the next ten years, according to state earthquake advisors. Their concern has been heightened by a swelling of the ground along the San Andreas Fault near Palmdale, but no formal or specific quake forecast has been issued.

**THE NEXT PREMIER OF THAILAND**, Seni Pramoj, has agreed with plans to have all U.S. troops withdrawn from his country by July 22. Pramoj called the withdrawal a good thing for peace in Southeast Asia, and indicated that Thai-American relations will remain close.

**LEBANESE POLICE SAY** more than one hundred people were killed and close to 150 were wounded in mortar, rocket and machine gun fire in Beirut and mountain areas. Leaders for both sides accepted a cease fire Saturday night, but the Moslems are upset because Christian president Franjeh has still not officially resigned. The Christians have rejected a Syrian demand not to seek help to end the civil war from any other source, including the U.S.

**NEW FEDERAL GRAIN INSPECTORS** will begin work in New Orleans today. They are expected to oversee the grading and inspection of grain and corn carried out by local inspectors and to clamp down on ship-loading irregularities that have plagued the nation's ports.

In the meantime, Congress is working on legislation to overhaul the federal grain inspection system, after a number of complaints that U.S. grain sold to foreign buyers is substandard, short-weighted, and adulterated with debris.

**FIRST INNOCULATIONS OF SWINE FLU VACCINE** will be given in experimental doses this week and next to federal employees and inmates in a Texas prison. Scientists at the center for disease control in Atlanta say there is no danger the disease could be caught from the vaccine because it contains a dead virus.

**SAN FRANCISCO'S STRIKING LABOR LEADERS** met yesterday to discuss the next moves in their 20 day walkout. They are torn between city demands for de-escalation of the strike, and a call by bus and trolley car operators for a general walkout.

**DEMOCRATIC PRESIDENTIAL CONTENDER FRANK CHURCH** told a Colorado audience that American foreign policy should be taken away from what he termed "compulsive interventionists." The Idaho senator also declared that the U.S. does not have to get involved with every war in Asia and Africa.

**THE IRISH REPUBLICAN ARMY** and its supporters marched in cities in Northern Ireland as well as the Irish Republic yesterday, commemorating the Easter Week Rebellion of 1916. The marches were peaceful amid strict security precautions.

— L. Battle

The Daily Nexus is published by the Associated Students and Press Council of the University of California, Santa Barbara, Monday through Friday during the regular college year (except on holidays and during examination periods) and weekly during the summer session.

Second Class Postage paid at Santa Barbara, CA, and additional mailing offices.

Mail subscription price: \$10 per year or \$4 per quarter, payable to the Daily Nexus, Thomas M. Storke Student Communications Building, P.O. Box 13402, UCSB, Santa Barbara, CA. 93107.

Editorial offices: 1035 Storke Bldg., Phone 961-2691.

Advertising offices: 1053 Storke Bldg., Phone 961-3828. Gayle Kerr, Advertising Manager. Representative for National Advertising: N.E.A.S., 360 Lexington Ave., N.Y., N.Y. 10017.

Printed by the Campus Press, Goleta, CA. 93017.

Discuss the problems . . .

### Of World Hunger & Population

Monday, April 19 7:30 p.m.  
Lutheran Lounge — URC 777 Camino Pescadero

### Isla Vista Quaker Group

MEDITATION AND "FRUGAL MEAL"  
(bring bread, cheese, or fruit to share)

TUESDAY at 6, upstairs at the  
UNIVERSITY RELIGIOUS CONFERENCE, 777 Camino Pescadero  
for information call Laura, Sh 2511, MWF after 10 or Kit, 962-6438 evenings.

### TAY-SACHS DISEASE Prevention Testing

— A simple, easy test requiring only 5 minutes

Mon., April 19:

University Religious Conference Isla Vista 5 - 9 p.m.

Tues., April 20:

University Center Program Lounge (on Campus)

10 a.m. - 1 p.m.

2 p.m. - 4 p.m.

Everyone Should Be Tested!

Sponsored by CAB

## COMMUNITY Kiosk

### TODAY

• Dr. Maurice Holt, Professor of Aeronautical Sciences at U.C. Berkeley, will present a seminar entitled "Three-Dimensional Boundary Layer Separation" today at 3:15 p.m. in Engineering 1132. The public is invited to attend.

• The best in South Australian Wombat music tonight from 12:30 a.m., hosted by Dean Hoffman on KCSB-FM 91.5.

• Rally-Forum to boost "Each One-Reach One" campaign. All invited today at noon in UCen 2294. Refreshments will be served.

• Solo recitals by Michael Rogers, concert pianist, will be tonight and

April 22, at 8 p.m. in Lotte Lehmann Concert Hall.

### TOMORROW

• I.V. Medical Clinic is sponsoring a Children's Clinic for kids, ages 3-15, every Tuesday from 9:30-12:30 p.m. Call for an appointment or come by.

• I.V. Public Health Lectures presents "Sugar and Your Body" by Barbara Scott, tomorrow at 7:30 p.m. at 892 Camino del Sur. Free admission.

• Gay Women's Rap Group will meet tomorrow at 8 p.m. Call 968-4219 for information.

• Nuclear Power - a safe alternative? Come find out more at a slide show presentation tomorrow at 4 p.m. in the San Rafael Formal Lounge.

The Equal Rights Amendment Coalition is sponsoring a candidates forum today at 3 p.m. in UCen 2292 to hear where the candidates for the executive offices of A.S. stand on feminist issues. Most of the Presidential and Vice-presidential candidates have agreed to attend.

The forum will be in the form of a panel, with each candidate speaking for a few minutes, to be followed by a question and answer period with the audience.

A dramatic change  
is at hand:



ArtCarved introduces  
the first fashion collection  
of women's college rings.

The world's leading manufacturer of diamond and wedding rings knows when it's time for a brand-new look in college rings.

You can see the new ArtCarved fashion collection on Ring Day. Every ring in it is designed for the woman who appreciates beautiful jewelry and the tradition of a college ring. If that means you, don't miss the new ArtCarved rings.

You'll like their style.

**UCSB**  
**Campus Bookstore**  
**University Center**

## RING DAY

TODAY and TOMORROW

9:00 - 3:00

College rings by

**ARTCARVED**

That's when the ArtCarved representative will be here to help you select your custom-made college ring. It's also the day you can charge your ArtCarved ring on Master Charge or BankAmericard.

**SAVE UP TO \$10.** Any day's the day to save on a gold ArtCarved ring: \$10 if you pay in full, \$5 if you pay a standard deposit.

World-famous for diamond and wedding rings

## City Plan Commission Recommends Coast Plan

By Ann Haley

The Santa Barbara City Planning Commission last month came out with a favorable recommendation on the California Coastal Plan. In addition to asking that the City Council support the Coastal Plan, the Planning Commission also requested that Santa Barbara receive special treatment under two Coastal Plan policy provisions.

The City Council has slated hearings on the Commission's recommendations on May 11.

In their March 4 analysis of the proposed California Coastal Plan, the Planning Commission recommended that the city support the plan, that it request the state to fund costs to the city of implementing the plan, that if Palm Park is expanded through state funds the land be turned over to the city for management, that Santa Barbara be designated a "special community" under a policy provision of the Plan and that the state provide funding for a subregional plan for the South Coast of Santa Barbara under another policy provision.

The Coastal Plan was prepared by the State Coastal Commission and the seven regional commissions under the guidelines of the 1972 Coastal Initiative (Proposition 20) to provide for the management of resources along the coast. The Commissions will go out of business at the end of 1976. A bill that would establish a permanent Coastal Commission and implement the Coastal Plan, SB 1579 is currently before the Natural Resources and Wildlife Committee in the State Senate.

In their analysis, the city Planning Commission found that "... the Coastal Plan (is) remarkably in conformance with Santa Barbara's General Plan. The values to be protected, enhanced, and preserved coincide generally with values which have been identified locally. The City of Santa Barbara will probably have no problem complying with State requirements if the Plan is adopted as proposed."

The report concluded that, "The millions of dollars of property loss suffered in the 1969 oil spill, more millions in damage to our tourist economy and the uncountable loss in recreational and esthetic values have made us perhaps more willing than others in the State to conserve our irreplaceable resources. The adoption of the Coastal Plan for the entire state will have the desirable spillover effect of making natural resources conservation the standard for all communities along the coast."

## Statewide Registration Drive Seeks to Garner Student Vote

By Martha Journey

Student Vote '76, a statewide student voter registration drive, is attempting to register all students for the June 8 California primary elections. The deadline for registering is May 9.

Comprised of students and former students, Student Vote '76 is the California branch of the National Movement For the Student Vote. The Movement was formed five years ago when the 18-yr. old vote legislation was impending.

Coordinating the organization is Kevin Woodruff, a former U.C. Berkeley student.

"Right now we're concentrating on fund-raising," Woodruff said. Since it is a non-partisan, tax-exempt organization, Student Vote '76 receives donations from both statewide organizations and individuals. "At present, most of our money is coming from wealthy, liberal contributors," Woodruff noted.

The function of Student Vote '76 is to assist local campus registration efforts with supplies and advice. Woodruff commented that among California colleges, the UC campus drives have been particularly well-organized.

The UCSB Student Lobby has been designated by Student Vote '76 as the official voter registration organization at this campus.

"Student Vote '76 will be helping us out a lot in the coming weeks," UCSB Student Lobby Co-director Craig Lawson said. He explained that in exchange for donations from the Lobby, Student Vote '76 will supply it with various publicity materials such as posters.

According to Lawson, the Lobby operates in three areas. First, Lobby representatives are sent to interview candidates on issues of student interest. The results of these interviews are published and made available to students.

Second, the Lobby sponsors a non-partisan candidates' "fair" at which tables are set up to

introduce the different people and issues through collected written material. The third area in which the Lobby works is in arranging for the candidates themselves to appear on campus.

"We're also hoping to offer another voter registrar training class in the next few weeks," Lawson said.

In addition to Presidential and Senatorial primaries, the June 8 ballot will offer a large number of other important decisions, notably Proposition 15, the "Nuclear Safeguards Initiative."

Student Vote '76 hopes to rouse maximum voter registration among California's more than one million college students.

## "each one-reach one"

Speakers are:  
Leo Martinez,  
Santa Barbara City  
Councilman  
Dr. Richard Flacks,  
Chairman, Sociology  
Department  
Jim Smith, CUCE  
Representative, Local 2070

UCen 2292  
April 19, 1976  
12-1:30pm

AFSCME  
Local 673  
American Federation of State, County, and  
Municipal Employees

Refreshments will be served!

أهلاً وسهلاً ومرحباً بكم

THE ARAB STUDENT ASSOCIATION at UCSB presents

THE SECOND ANNUAL ARAB CULTURAL WEEK  
A WEEK FULL OF EXCITEMENT  
APRIL 19 TO 25

For Further Information and Reservations  
Call 968-0081 or 968-3381

### ARAB WEEK PROGRAM

Monday April 19 to Friday April 23	ARABIAN ART EXHIBITION	UCEN Art Gallery 9:30 - 5:00pm
Monday April 19	Movie: "PALESTINE IS THE ISSUE" FREE	UCEN 1128 12 Noon
Tuesday April 20	Movie: DOCUMENTARY ABOUT NEO-COLONIALISM AND NATIONAL LIBERATION IN THE ARAB-PERSIAN GULF Donation	PHYSICS 1610 7:30 & 9:00
Wednesday April 21	Lecture: "PRICE OF OIL AND WORLD INFLATION" by: Professor El-Mallakh	UCEN 1128 12 Noon
Thursday April 22	Lecture: "THE STRUGGLE OF THE PALESTINIAN PEOPLE" by: Dr. Hatem El-Hussanie	CAFE INTERIM 12 Noon
Friday April 23	Lecture: "THE MIDDLE EAST: OUR NEW VIETNAM?" by: Dr. Alfred Lilienthal Movie: "STATE OF SIEGE" \$1.25 STUDENTS \$1.50 GENERAL	UCEN Program Lounge 12 Noon CAMPBELL HALL 7:00 & 9:30
Saturday April 24	"ARABIAN CULTURE NIGHT" ARABIAN DINNER CULTURAL SHOW SPECIAL GUEST SPEAKER \$4.00 Students \$5.00 General Tickets available at the Art Exhibit	DE LA GUERRA COMMONS 6:00 pm
Sunday April 25	Arab Culture Movie: "MIRA MAR" With Arab dialogue and English subtitles. ADMISSION \$1.00	PHYSICS 1610 7:00 & 9:30

# Letters

## It's a Question of Speech

Editor, Daily Nexus:

When you enter into a campaign for office, you tend to be a bit idealistic. I'm no exception to the rule, but as my campaign for Executive Vice President grows, I've begun to see problems that can be changed.

The problem I'd like to focus on, is the A.S. by-law prohibiting candidates from advertising in any media. I personally believe that a candidate should be allowed to spend his/her money (up to the limit), anyway that he/she chooses. To quote the U.S. Supreme Court, in a ruling handed down at the beginning of this year, "The electorates increasing dependence on ... mass media for news and information has made these expensive modes of communication indispensable instruments of effective political speech."

It appears to be a direct violation of our freedom of speech to restrict a candidate in their desired techniques of communication to the voting public. To the new candidate who's anxious to become known, an ad in the Nexus at the beginning of a campaign could help considerably with gaining equal status

*The Nexus welcomes letters from its readers. If you wish to comment on any matter of interest, write a letter-to-the-editor and bring it to the editorial offices of the Nexus beneath Storke Tower. Please type your letters using a 55-space line, and use non-erasable paper. All letters are subject to condensation.*

with a more recognized opponent.

This is an obvious situation where the constitution is being tested. The avenue that I've chosen, (taking the question to A.S. Judicial Council), will hopefully result in a positive evaluation and ruling on my proposal. I recognize the fact that new ideals in a constitution are brought forth for questioning and evaluation. This statement will serve as my initiative for such an action.

Scott Landow

## The Costs of Alternatives

Editor, Daily Nexus:

I'm tired of reading all this anti-nuclear propaganda without comparable thoroughness in criticizing the so-called "energy alternatives." Conservation and energy from wind, sun, or coal seem to be the great hope of the anti-nuclear group. If you look at these in a practical sense, something called COST gets big fast.

Solar is an expensive joke at 10 times the cost of electricity from nuclear energy. Wind is 5 to 6 times as expensive, if it's windy. Even if these exotic energy sources were comparable to nuclear energy in price, how many homes could afford to convert their electrical reliance to them overnight?

Then there's coal. It's only twice the price of nuclear, but even in normal operation it dumps cancer producing chemicals into the air. Sure, with stack scrubbers we could clean most of it up, but here again the cost starts skyrocketing when you have to get out that last per cent of known carcinogens.

When you finally corner the anti-nuclear people on all of these problems, they say we can simply conserve and do without nuclear energy. They point to Switzerland with a good standard of living, but not a lot of energy consumption, and say "see, we can do it if they can." But what does Switzerland do with it's energy? Make clocks. She doesn't feed 20 per cent of the world or make all the high energy products for export that the U.S. does.

Say we drastically cut our residential

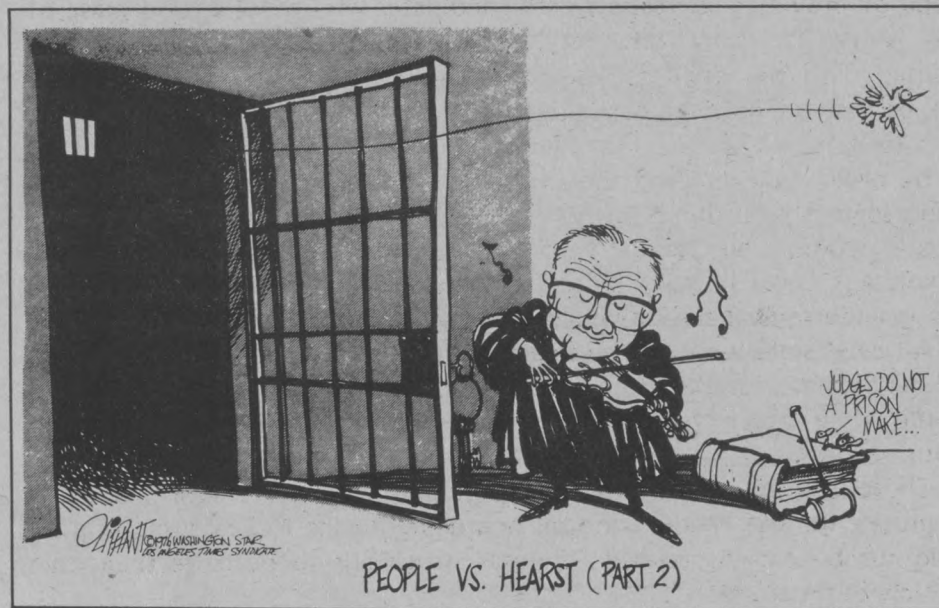
energy. Wind is 5 to 6 times as expensive, would amount to a 10 percent savings overall since residential use is about 20 per cent of the total energy consumed. Therefore, even if we freeze in the dark we won't help the energy problem.

This means that to make a dent in our consumption, something else has to be given up, like cutting industrial energy use, with the side effects of increased unemployment and economic depression. Now, if everyone could afford to have solar energy systems installed today, there would be plenty of work and unemployment wouldn't be a problem; but again, who can afford it? Since all these "alternatives" are hurting because of their cost, the philosophy of "a little energy from each source" still prices itself out of the market.

What it amounts to is that without nuclear energy we will be financially forced to conserve. Not just "lids-on-pans" conserving, but dollar a gallon gasoline and proportionate price increases on all other products and services dependant on petro-chemicals.

One final note on conserving; what are all our grandchildren going to do for medicines and plastics based on hydrocarbons when we've burned them all to light our homes? These are tough questions that deserve more than the usual verbal attacks and glossing over that the anti-nuclear group try to pass out as truth.

Clint Seal



## Marshall Tucker: Energetic- Not Decidedly Disappointing

Editor, Daily Nexus:

After reading the review of the Marshall Tucker Band in today's Nexus, we can only ask — did Dean Hoffman actually attend the concert? For his sake we hope not, for his review was so unenlightened it can only be blamed on non-attendance, or a complete lack of musical knowledge.

His musical ignorance is demonstrated by his misused metaphors of "white noise" and "mindless jam." Can Mr. Hoffman actually be inferring that Doug Gray's vocals were unmelodious and harsh? Can Mr. Hoffman actually be inferring that the song "24 Hours at a Time" was repetitious and boring? The thought is unbelievable. Anyone with a rudimentary knowledge of music and an unbiased attitude toward Marshall Tucker could see the absurdities of these statements. The band was tightly-knit, energetic, and highly entertaining — not, as Mr. Hoffman states, "decidedly disappointing."

It is highly amusing to read that Toy Caldwell's guitar work was "mostly brash and choppy, and his lengthy solos were painfully loud and tedious." Those who attended the concert and have heard Marshall Tucker albums were struck by how closely the band stuck to the original versions of their songs. Unless Mr. Hoffman feels that Toy Caldwell is "harsh and choppy" and "painfully loud and tedious" on Marshall Tucker albums, his opinion is completely unfounded.

This matter of loudness is also interesting. We watched the concert from the very first row on the lawn. While the sound volume was loud, it never reached the level of "painfully loud," and Doug Gray's vocals certainly were not "distorted." Again, we wonder if Mr. Hoffman was actually in attendance.

We realize that everyone has their own opinions, and it is quite conceivable that people may not have enjoyed Marshall Tucker. Obviously Mr. Hoffman was one of them. Where we take issue with the reviewer is his reasons for the negative article. His opinions are not backed up by what actually occurred. Had Mr. Hoffman accused the band of little deviation from their recorded versions of the songs they played, or of playing for too short a period of time, we could see his point. But when he speaks of "heavy-handedness" and the band being "all but lost in the din," it is obvious that Mr. Hoffman just doesn't know what he is talking about.

This is not a case of die-hard Marshall Tucker groupies accusing someone of deprecating their favorite band. This is a case of die-hard rock 'n' roll fans angered by a reviewer who is sadly mistaken in his opinions. We can only ask that future Nexus reviewers be more responsible with their reviews and insure that their opinions are not just prejudices, but opinions based on facts. In Mr. Hoffman's case, it is apparent he was prejudiced against the Marshall Tucker Band from the very beginning, or possibly in a bad mood that day. More than likely the review was written in haste, and Mr. Hoffman has already seen the error of his ways.

Steve Vincent  
Frank Ware  
Verne Deriman  
Bill Hurlsey

Editor, Daily Nexus:

Mr. Hoffman refers to the Marshall Tucker Band's County Bowl performance as disappointing. Call me a Philistine if you will Mr. Hoffman, but I, on the other hand, liked it.

He speaks of mindless jams and undisciplined playing. Gosh, now I feel a little silly thinking that I was actually enjoying what certainly was musical anarchy to your well trained ear. I was even dancing, mind you, to the juvenile "unrelenting, high speed boogie." I was even unaware that "Can't You See" was originally intended to be a softly sung "subtle" song.

Now Mr. Hoffman, I know I could never express myself as descriptively and eloquently as yourself, (I'd like a nickel for everytime you've used the adjective "infectious"), but let me try. Mr. Hoffman you are, in your attempt to criticize music, a mockery, a charlatan, a travesty, a sham....

Jerry Martin

### DOONESBURY



by Garry Trudeau

# Endorsements

Each year, the Nexus endorses candidates in the A.S. elections in the hope of providing its readers with candidates who show a good grasp of the issues. To many, however, the Nexus endorsements have become tainted with the smell of backroom politics, while others believe that Nexus staffers have preconceived ideas of which candidates should be endorsed.

In order to overcome the problems of the past, and open up the endorsement procedures, a new practice has been instituted this year. For this election, the Nexus held private interview sessions with the candidates, most notably those for the executive offices, along with the group endorsement session which is always held.

All candidates were invited to attend these sessions. Unfortunately, not all candidates did. The Young Socialist candidates chose to boycott as a group while others chose not to attend, just saying that the Nexus should not endorse.

Those who believe that the Nexus should not endorse have said, "it is improper for the Nexus editorial board to use the Nexus, a publication paid for by the Associated Students of UCSB, to promote their own choices in the election."

There is no dispute that the Nexus is a student publication, especially as it has a student staff. The Associated Students, however, only pay close to 20 percent of the costs of its operation. The editorial board of the Nexus has the right to name its choices in an election, just as any student or publication has the right to express an opinion.

It is the responsibility of the press to use its position to present information which might otherwise be unavailable. This information should enable readers to make more informed and intelligent decisions. This responsibility includes the support of issues through factual editorials. No one is compelled to agree with an editorial in the Nexus. Editorials are merely an expression of opinion supported by fact. If such an opinion sways the beliefs of an individual, then they have accepted the facts and logic used to formulate that opinion.

With such in mind, the Nexus has endorsed candidates for the A.S. election on Tuesday and Wednesday. Of the candidates interviewed, the following seemed the most qualified for the offices for which they are running:

## EXTERNAL PRESIDENT

Cindy Wachter will bring a new focus to this office with her extensive experience as an IVCC member. Her hard work with the IVCC and the incorporation drive show her fully capable of handling the duties of this office.

A knowledge of student issues is of great concern for the external president, who must represent these issues to the UC Board of Regents,

the State, and the County of Santa Barbara. In her interviews, Cindy Wachter has shown a good grasp of the issues facing students, including enrollment, tenure, and the elimination of Subject A fees.

Most importantly, however, Wachter has close ties with Isla Vista which will enable her to better represent the views of Isla Vista. Her knowledge of the community and her experience with county government are assets which have been neglected in the past.

## INTERNAL PRESIDENT

Tracey St. Johns has an excellent grasp on the avenues to follow to expand student rights and academic concerns. She has established credibility with those she must work with, and has experience with the workings of the Associated Students government. There is no doubt that her energy and ability will lead to her being a successful internal president.

## EXECUTIVE VICE-PRESIDENT

Paul Pooley is our choice for this office. Paul has extensive experience working with A.S. and with intramurals. He has shown a good grasp of the issues and has the knowledge necessary to help implement those programs which will be beneficial to all students.

## ADMINISTRATIVE VICE-PRESIDENT

Rich Perrigo is running unopposed for this office, yet bothered to show up for the endorsement session. In our minds, Perrigo has shown an openness to new ideas, and a willingness to listen. His candidacy is an asset for A.S., which can benefit from such a position.

## OFF-CAMPUS REPRESENTATIVES

J. Anthony Chavez and Mark Hertle both have the necessary abilities for the office. They are both concerned with increasing student input into the decision-making process. They will make good reps to Leg Council, and deserve support.

## REPRESENTATIVES-AT-LARGE

Guy Chambers and Seth Freeman, two of the nine candidates running for rep-at-large, have already been active in valuable programs in A.S. government. While other candidates have also been working in A.S., these two have exhibited a genuine zeal and perseverance in promoting student interests. We are convinced that Chambers and Freeman would be fervently responsive to their constituency.

## RHA REPRESENTATIVES

No endorsement.

# Opinion

## Accountability and Responsibility: Views on a Candidate

By Rick Ziv

With tomorrow's election upon us, the voters of UCSB should know that there is one candidate that should not be elected to office under any circumstances. Candidate for Internal President Regina Jackson, a former Leg Council representative attempted to use that position in order to illegally pass the budget breakdown for the BSU.

Jackson produced fabricated minutes for a Leg Council meeting that never took place. In the minutes of the so called "meeting," Jackson discussed the BSU budget and passed the budget into "law." The entire meeting, according to the minutes, spanned fifteen minutes. All of the executive offices of Leg Council were listed as absent; in fact, none ever knew of such a meeting until after the minutes were produced.

Joyce Gould, who was listed as being in attendance at the meeting, later stated that she never attended such a meeting,

that she did not accept its validity, and that while she conceded the point that she and Jackson discussed the issue of the BSU budget over the phone, never did Gould feel that the conversation was to be construed as an official Leg Council meeting.

Jackson never did finish out her term of office as a representative to Leg Council as she was found ineligible (Leg Council members are required to have at least a 2.0 g.p.a. and carry 12 units per quarter) and her subsequent appeal was denied.

This is not the type of candidate that should be voted into office. Jackson has had several opportunities to respond to the illegal meeting incident and has failed to do so. Irresponsibility and unaccountability are terms that fit Regina Jackson well and there is no reason to believe that if she were to become the Internal President that we would see a new Regina Jackson.

By Don Heinsohn  
and Walt Wilson

We should be used to last-minute campaign smears in the Daily Nexus by now, but that newspaper never ceases to amaze and outrage.

Hardly one year ago the Nexus came out swinging for two of its favorite son presidential candidates, Howard Robinson and Neil Moran, while decrying the "irresponsibility and unaccountability" of a black student, Murvin Glass. This year Editor-in-Chief Rick Ziv and his Nexus staffers have pulled out their cat-o'-nine-tails to administer a public flogging to Regina Jackson. Is history repeating itself?

Remember this is the same Nexus whose endorsement last spring put Messers, Robinson and Moran into office. Then, six months later it was forced by events to demand their resignations for acts of perjury and malfeasance in office. Guess what? Robinson and Moran are still

in office!

Now, the Nexus blasts Regina for irresponsibility and unaccountability. Let's get one thing straight from the onset - Regina Jackson is not the issue in this election: the integrity of the Nexus and student government are! The cozy relationship among the press, student government and the UCSB administration became brazenly evident last week when Leg Council set forth a By-Law locking in the Nexus budget at a substantial fixed sum.

Perhaps you remember the election last spring when A.S. hopeful Tracey St. Johns promised to support the legendary Volleyball-Water Polo Initiative and then promptly turned around and voted against it once in office.

Irresponsibility in A.S. and in the press is nothing new. But if there are criteria for judging political candidates, those should be determined by students, not by the Daily Nexus.

# DAILY NEXUS

Rick Ziv  
Editor-in-Chief

Doug Amdur  
Editorials Editor

Jim Tang  
News Editor

Opinions expressed are the individual writer's and do not necessarily represent those of the Daily Nexus, UCSB Associated Students, or the UC Regents. Cartoons represent the opinion of the individuals whose names appear thereon. Editorials represent a consensus viewpoint of the Daily Nexus Editorial Board. All items submitted for publication become the property of the Daily Nexus. We welcome contributions from alternative viewpoints.

# ENTERTAINMENT

## Roberta Brings Resonant Warmth To The Chilly Night Air

By L. Battle  
 "I can hear that you're very warm, and I can smell it too," Roberta Flack told an overflowing crowd at the Santa Barbara County Bowl Wednesday night. Flack added her own warmth to the chilly night air with a group of songs characterized by lyrical harmonies and a continual driving rhythm.

Flack opened with "Yes I Do," a kind of rock spiritual with a moving beat. She followed with Janis Ian's "Jessie" and the popular "Feel Like Making Love."

Her voice was soft and throaty in the lower register and piercingly sweet in the higher ranges. She offered variety in her music by changing the accompaniment, sometimes

breaking off a strongly rhythmic section for an a cappella transition into either a new song or a re-interpretation of the old.

Flack's style was perhaps demonstrated best in her interpretation of Leonard Cohen's "Suzanne." Her resonant voice carried the haunting melody beautifully over a simple chordal accompaniment and a strong underlying rhythmic pulse. The accompanying runs on the electric piano gave the song an almost ethereal quality. After a strongly rhythmic improvisation section, Flack broke off into a soft, hymn-like ending.

"Sometimes I get sensuous..." she breathed into the mike as she began "Killing Me Softly With His Song." Her voice was velvety over the sweet sounds of the electric piano and a tinkly effect from the percussion. A strongly rhythmic bass progression was maintained throughout as her voice contrasted between belting out the lyrics and singing in hushed tones. She ended in a quiet a cappella section.

Flack encouraged the audience to join her in Eugene McDaniel's "Why Don't You Move In With



ROBERTA FLACK croons softly into the night.

Photos: Eric Woodbury

Me?," the title song from her forthcoming album. The range was well suited to her voice, and the infectious melody brought a responding chorus from the audience.

Flack presented her rendition of "Ain't No Mountain High Enough" as "another version of an old song." Again, the driving

rhythm and strong bass progression provided the foundation for an accompaniment that alternated between rocking out and playing smooth and easy. Flack climaxed the full-force chorus of the song by cutting it off abruptly for an a cappella transition into the slow ballad "Somewhere" from West Side Story.

Flack's total involvement with her voice was evidenced in her entire range of styles, from the lyrical "Somewhere Deep in my Body" to her closing number, a lengthy narrative on "Reverend Lee."

The slightly gravelly but resonant voice of Bill Withers provided an excellent complement to Roberta Flack. Withers seemed tired, but was a relaxed performer who established good rapport with the audience.

"I sure will," he replied, smiling, when someone shouted out "Lean on ME!"

Withers opened with "Make Love to Your Mind" and followed with a pleasing, rhythmic rendition of "Just A Man." He sang only one verse of the well-known "Use Me Up" and "Ain't No Sunshine," but performed an extended version of "Grandma's Hands."

### SORRY

Contrary to the review of "Spring Dance" printed in the Nexus (4/16/76), Deborah Hoffman was co-choreographer of "Journal," along with Patricia Hanada-Weir. Our apologies for the error.



**LITTLE ACORN NURSERY**  
 announces  
**Vegetable Planting Time!**  
 We carry: seeds, soils, soil additives, and vegetable seedlings; also fertilizer, shovels, and trowels.  
 Let us Help Now's the time to plant! **968-0902**

**Mother's Day Special**  
 nicer than a phone call  
 more thoughtful than a card  
 send an  
**Orchid**  
 anywhere in the USA  
 sealed in a box with a card and your message  
 Only **\$3.95**  
 order at booth in front of Ucen  
 call-  
**968-4030**  
 -or-  
**685-3482**  
 Sigma Alpha Epsilon




**FALAFEL, FALAFEL, FALAFEL**  
 ---always delicious!  
 879 Embarcadero del Norte, I.V. The First Falafel Stand in the West

**SONGBOOKS**  
 the **WORLD'S FINEST SELECTION**  
 Four Hot New Releases:  
 "FLEETWOOD MAC"  
 "HEROES ARE HARD TO FIND"  
 JONI MITCHELL: BOB DYLAN:  
 "The Hissing of Summer Lawns" "Desire"  
 EAGLES:  
 "One of These Nights"  
**MORNINGGLORY MUSIC**  
 910 Embarcadero del Norte IV

**OUR FAMOUS DEEP PAN PIZZA**  
 Comes with the **EXTRA CHEESE**  
 you want!  
**CHICAGO BROS.**  
**DELIVERY!**  
 LOCATED IN THE  
**F.U.B.A.R.**  
**968-0707**

**KODAK**  
 Film Processing  
 at **KINKO'S**  
 6550 Pardall Isla Vista  
 174 Aero Camino Goleta

# Where's the Idea in "Party"?

By Scott A. Keister

The Rock Musical seems an elusive form of theatre to pin down stylistically, and recently its value has come to some question. "Where's the Party?!" is a clear example of how theatre and rock 'n' roll are being jumbled together with semi-successful results.

Written by Michael Vallee and Brian Carroll, "Party" seems more a concert of original songs loosely tied around a story line that dissolves halfway through the proceedings — than an acutal musical play. What ultimately evolves is a showcase, for two talented rock composers to flaunt their goods, with a backdrop of theatre to make it more palatable, unique, and artistic.

However, here is where the problems arise. Annalisa Erickson and Leslie Motl, as two somewhat mature young women who believe parties are a battleground on which they can conquer men through humiliation overact so noticeably that one never believes they are real people. Bill King and Steve Field as two horny redneck truck drivers who pick up the would-be sirens and put them through some unexpected and unclear changes, pull off some very funny moments, yet they are no less unreal.

Admittedly, the music here is the main show. It is pointless to focus on the play elements, since the songs, on the whole, have very little to do with the characters or the plot. Brian Carroll weaves in and out of the action as several characters, all of them strangely playing a guitar. He sings with a power and confidence that is truly impressive. The songs are well-knit rock pieces, and are played by the four-piece band with a clean, energetic spirit that transcends the unintelligible lyrics (which are printed in the program) and the befuddling plot. Michael Vallee appears at the beginning and end of the show, and plays very little importance in the story, although his "Naked Hamster" is an important character. He sings with a dramatic sense of comedy that works well, yet his performance seems superfluous since the purpose of his role is vague, and undefined in terms of the action.

The Kinks have mastered a form of rock theatre which "Where's the Party" closely simulates — characters as musicians and sparse dialogue; the songs tell the story. Carroll and Vallee could have told this story, which apparently is important to them — considering they have done a major rewrite

since last year's performance at Campbell Hall — with more clarity, and more cohesiveness, had they incorporated the characters and music with more comprehension. They are talented, and display an understanding of narrative, and a definite flair for basic rock 'n'

roll, yet a bit more honesty of focus in the presenting of their ideas would establish a real communication with their audience that wouldn't necessitate dragging audience members up on stage to dance for the finale; they would willingly rush.

## Arab Cultural Week

MONDAY, APRIL 19

ART: Arabian Art Exhibition, thru Friday April 23 in the Ucen Art Gallery. Hours: 9:30 - 5:00 p.m.

MOVIE: "Palestine is the Issue" Ucen 1128 at 12 noon. Free.

TUESDAY, APRIL 20

MOVIE: A documentary about Neo-Colonialism and National Liberation in the Arab-Persian Gulf. Physics 1610, 7:30 and 9:00, Donations requested.

WEDNESDAY, APRIL 21

LECTURE: "Price of Oil and World Inflation," by Professor El-Mallakh, Ucen 1128 at 12 noon.

THURSDAY, APRIL 22

LECTURE: "The Struggle of the Palestinian People," by Dr. Hatem El-Hussanie, in the Cafe Interim at 12 noon.

FRIDAY, APRIL 23

LECTURE: "The Middle East: Our New Vietnam?" by Dr. Alfred Lilienthal in Ucen 1128 at 12 noon.

MOVIE: "State of Siege," in Campbell Hall at 7:00 and 9:30. Admission \$1.25 students, \$1.50 general.

SATURDAY, APRIL 24


ARABIAN CULTURE NIGHT: Arabian Dinner, Cultural Show, Special Guest Speaker. De La Guerra Commons at 6:00 p.m. Tickets \$4.00 Students, \$5.00 General, are available at the Ucen Art Exhibit.

SUNDAY, APRIL 25

MOVIE: "Mira Mar," with Arab dialogue and English subtitles. Physics 1610 at 7:00 and 9:30. Admission \$1.00.

**Ruby Begonias** N. 101 Winchester Cyn.

TONIGHT: WELL DRINKS 30¢



**THEATRICAL MAKE-UP & HAIR GOODS**

Our Exclusive A NEW CONCEPT IN PROFESSIONAL HAIRCARE

**Vidal Sassoon**

Shampoo \$2.50 Protein Pack \$2.00  
 Finishing Rinse \$2.50 Protein Hair Remoisturizer \$3.75

Swimmers: Get the GREEN out with "GREEN OUT" Shampoo.

**SANTA BARBARA BEAUTY SUPPLY**

GOLETA: 5915-G Calle Real 967-4303  
 Orchid Bowl Plaza — opposite Sambo's

SB: 9 W. Anapamu 965-5717


**ZINA SCHIFF**  
 violinist

**FRIDAY, APRIL 23**

8 p.m. Lotte Lehmann Concert Hall

\$1.50 Students / \$2 UCSB Faculty & Staff / \$2.50 General

Tickets on sale Arts & Lectures Office, UCSB,  
 Lobero and Hittsville.



Sandwiches by... **DAVITRO'S**

**Delivers 968-1111**

**BASKIN-ROBBINS** ICE CREAM

31 ICE CREAM

5749 Calle Real - Open 'til Midnite

5 ACADEMY AWARDS!  
 BEST PICTURE! ACTOR! ACTRESS!  
 JACK NICHOLSON  
 "ONE FLEW OVER THE CUCKOO'S NEST" (R)

**MAGIC LANTERN**  
 968-3356 TWIN THEATRES  
 Upper left hand corner of Isla Vista 960 Embarcadero Del Norte

**X-Rated! No one under 18!**

**"INSERTS"**

theatre of distinction

**Arlington**  
 center for the performing arts  
 1317 State Street 963-3686

Exactly 45 years after original opening!

Opening May 22nd!



**CINEMA** 967-9447  
 6050 Hollister-Goleta

ROBERT REDFORD -- DUSTIN HOFFMAN  
**"ALL THE PRESIDENT'S MEN"** (PG)

**GRANADA**  
 1216 State 966-4045

WALTER MATTHAU -- TATUM O'NEAL  
**"BAD NEWS BEARS"** (PG)

**STATE**  
 1217 State 966-2479

The Picture Every Woman Should See!  
**"LIPSTICK"**  
 and "ONCE IS NOT ENOUGH"

**RIVIERA**  
 NEAR SANTA BARBARA MISSION opposite El Encanto Motel 965-6188

**"GABLE AND LOMBARD"** (R)

**FAIRVIEW** 964-4988  
 251 N. Fairview - Goleta

ALFRED HITCHCOCK'S  
**"FAMILY PLOT"** (PG)

**AIRPORT DRIVE-IN**  
 Hollister & Fairview 964-8377

**"LIPSTICK"** (R)  
 AND  
 CHARLES BRONSON **"DEATH WISH"**

**TWIN DRIVE-IN 1** 964-9400  
 907 S. Kellogg

WALT DISNEY'S **"RIDE A WILD PONY"**  
 and **"DUMBO"** (G)

**TWIN DRIVE-IN 2** 964-9400  
 IN Goleta

**"SHERLOCK HOLMES' SMARTER BROTHER"** (PG)  
 and Woody Allen in **"BANANAS"**



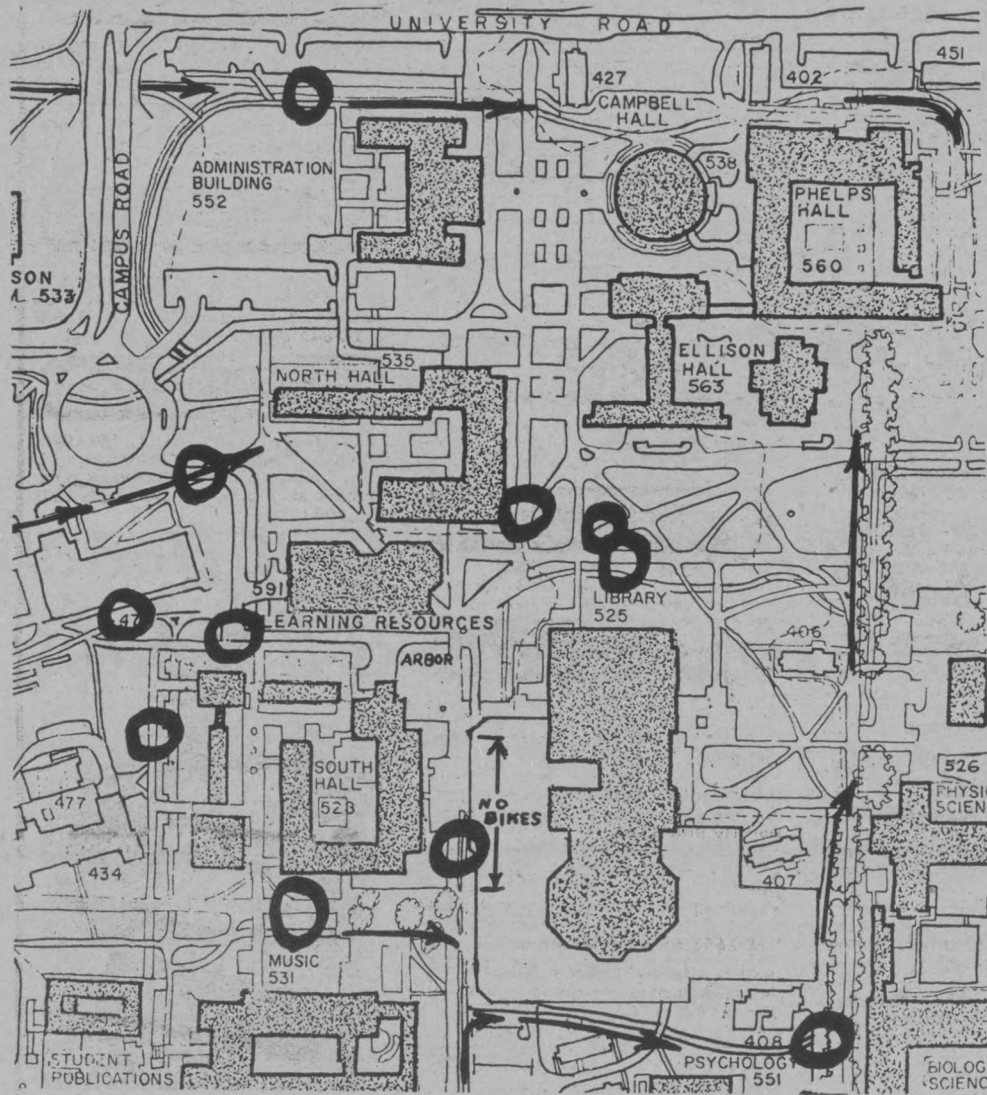


# Emergency Core Cooling System Activated

## An Announcement From the UCSB Joint Bicycle and Transportation Committees

Most of you have undoubtedly seen signs posted with notification of the April 19 closure to bicycles of the area between South Hall and the Library. The upcoming creation of this bicycle-free plaza is one part of a multifaceted approach to present transportation problems, which will include bicycle counts, traffic flow studies, accident analysis, and surveys of the traffic habits and opinions of the campus community. Following months of joint meetings of the UCSB Bicycle and Transportation

Committees, involving long hours of extensive reevaluation of all aspects of the bicycle situation, we have articulated specific objectives and types of information that are necessary for sound long range planning. To this end, a variety of experiments and data-gathering projects have been scheduled for the Spring quarter. We wish here to apprise the community of our progress thus far, of upcoming activities, and to stimulate cooperation and constructive discussion within the community.



Bike counting sites and alternating routes around campus core.

North/South	West of South Hall	South Hall-Library	Science Lane	Totals
0845-0905	69	486	264	819
0945-1005	84	501	245	830
1045-1105	96	396	241	733
1145-1205	90	372	306	768
1245-1305	74	361	319	754
1345-1405	68	323	257	648
1445-1505	48	279	192	519
<b>Totals</b>	<b>529</b>	<b>2718</b>	<b>1824</b>	<b>5071</b>

East/West	Pardall Path North of Music	South Hall-Learning Resources	North of Administration	Totals
0845-0905	443	460	221	1124
0945-1005	430	500	192	1122
1045-1105	365	350	160	875
1145-1205	398	450	177	1025
1245-1305	381	370	144	895
1345-1405	337	373	153	863
1445-1505	302	437	113	852
<b>Totals</b>	<b>2656</b>	<b>2940</b>	<b>1160</b>	<b>6756</b>

### SAMPLE BIKE COUNT DATA

Demonstrates total bicycle traffic volume (both directions) on major North/South and East/West bikeways, at previously determined peak time periods, gathered Wednesday, April 7, 1976.

note: at any given area, the heaviest bicycle traffic is generated immediately before and following the hours of 9:00 and 10:00 a.m. Over one-thousand bicycles enter the campus on three primary paths in a twenty minute span.

### SUMMARY OF BICYCLE ACCIDENTS ON CAMPUS, 1962-1976

Fiscal Year	Accidents	Three quarter Average Enrollment	Accidents Per 1,000 Students
62-63	87	4,780	18.18
63-64	67	5,848	11.49
64-65	126	7,728	16.39
65-66	120	9,378	12.82
66-67	112	10,833	10.31
67-68	102	11,776	8.69
68-69	56	12,220	4.59
69-70	100	13,254	7.52
70-71	85	13,009	6.54
71-72	161	12,239	13.16
72-73	208	11,828	17.54
73-74	215	11,988	17.86
74-75	265	12,927	20.41
75-to date	287	14,100	20.35

These statistics are based on reports compiled by Environmental Health and Safety, resulting from accidents involving students who required immediate medical attention. The actual number of accidents (including those battered bodies that stoically hobble home) is estimated to be approximately ten times those reported.

note: Parking Services ceased issuing quarter parking permits to students living within one mile of campus at the beginning of the 1971-72 academic year.

The objectives of the bicycle program continue to be the decrease of accidents, the provision of safe and convenient co-existence of cyclists and pedestrians, and the motivation of responsible behavior through increased consciousness of the bicycle as a vehicle. The success of the program has traditionally been based upon a realistic balance of efforts in the areas of engineering, education, and enforcement. This framework recognizes that the initial step is to provide a physical environment conducive to safe travel, supported by a community that uses it properly.

Since the beginning of this academic year, the general indices of a "bicycle program" have been apparent. The accompanying accident statistics illustrate that the probability of one sustaining injuries from a bicycle-related accident is increasing. In addition, those remaining, who manage to escape actual collisions, often traverse the campus with difficulty and fear. As expressions of public dismay increase, bicycles have become an issue in all sectors of the campus community. As we examined the situation, present enrollment figures and the continued increase in the use of the bicycle mandated a return to engineering, or physical, considerations.

The primary areas of concern were easily identified. The intersection at the Arbor, Library and Learning Resources, an already difficult area exacerbated by the Library construction, is the most heavily traveled on campus. The quad area between the Library and Ellison Hall, with its expansive walkways particularly conducive to fast and reckless bicycle riding, has been the cite of our more serious accidents. Finally, a corollary phenomenon was apparent; as the core became increasingly crowded, people began to discover previously less appreciated perimeter paths.

As a variety of possible solutions were articulated, we realized areas in which our knowledge was insufficient for a determination of direction, and for requisite justification of the substantial financial resources that would be required. During this quarter, this information will be gathered through the following activities:

- a. an in-depth analysis is being

performed of accident reports (from those persons who sought immediate medical attention following an accident involving a bicycle), which will include compilation by location, time-of-day, cause and type of accident, and type of injuries sustained.

- b. a control count of bicycle traffic volume on all major bikeways, and walkways used by bicycles (already completed.)
- c. the experimental closure of the area between the Library and South Hall to all bicycle traffic followed by a repeat of the counting process and analysis of the ban's effect on: volume of traffic on all other bikeways, the state of the above-mentioned intersection and quad areas, and accident rates.
- d. a count of all parked bicycles, an assessment of the number and location of needed bike racks, and the purchase of additional racks (already completed).
- e. the experimental closure to bicycles of the area between South Hall and Learning Resources, later this quarter, dependent upon the results of (c) and the provision of a safe route through the loop west of North Hall, followed again with complete traffic flow counts.
- f. on going research into means of educating cyclists and pedestrians in safe and responsible behavior.
- g. extensive public survey to be conducted at the end of the quarter.

Throughout this period we suggest that you consider parking your bicycle at a location convenient to your day's schedule — and leave it there. If you cannot walk from one class to another in time, avoid the crowded core areas.

And finally, please submit any comments, suggestions, etc., to the Joint Bicycle Committee via the Community Service Organization.

Any results of the experiment will constitute a success, as our goal is to learn, and constructive input from the community is essential to that process.

# Gauchos Split Bruin Twin-Bill, Drop 2 of 3 In Weekend Series

By Karl Kaste

Weekend baseball action saw the Gauchos up against the league leading UCLA Bruins in a three game series. UCSB traveled to Westwood on Friday for the first CIBA conference game, and both teams returned here on Saturday for a doubleheader.

In Friday's game UCLA came out swinging, and coach Gorrie had to go to his bullpen early after starter Kevin Skahan got into trouble. However, the Bruins proved to be all that relievers Moulton, Schultze, and Garnett could handle.

UCLA scored 14 runs on 17 hits, and although the Gauchos had 12 hits, they were only able to get 6 men across the plate. The 14 to 6 loss was disappointing, but the Gauchos knew that the next day they would be home for two.

The first game of the double header matched UCSB's Joe Janton (3-2) against Bruin Steve Binachi (4-2). In the first 3 innings the Bruins scored 4 unanswered runs, and one couldn't help but wonder when the Gauchos were going to get on track.

Janton stayed in the game and got tough by shutting out UCLA in the next 2 innings. That seemed to be the catalyst needed, and in the bottom of the 5th the Gauchos exploded for 7 runs.

Tony Torres and Randy

Robinson each drove in a run while Marty Slimak and Stu "Squeeze It Idiot" Bringham were driving runs home by twos.

The Bruins scored two more runs in the 7th, but Janton got himself out of the inning with fine pitching and alert fielding. The Gauchos got the two runs back in the 8th on a Torres double with two men on. The Bruins went down in order in the 9th to give the Gauchos the first game, 9 to 6.

**CONCENTRATION** - UCSB pitcher, Mike Rector started the second game of the Bruin double-header over the weekend, which UCLA won 5-2. Rector is shown here delivering to Bruin catcher Dennis Delany.

Photo: Al Pena

After their convincing win the Gauchos looked as if they had the momentum to carry them through the 2nd game. However, in the 2nd game UCSB seemed to lose their spirit. The Gauchos had not only beaten UCLA on the field but also on the bench in the first game; in the 2nd game they went flat and their play reflected it.

UCSB should have won the 2nd game. They only scored 2 runs to UCLA's 5, but they

actually outhit the Bruins 9 to 8 while leaving 11 men on base.



## UCSB Cruises Past Long Beach In Home Finale With 3-0 Victory

By Tom Bolton

So far as volleyball is concerned, UCSB is no newcomer. The Gauchos have made their mark, and few events on campus draw as much interest as Gaucho volleyball.

Despite this popularity, UCSB finished out its regular season play before an unusually small crowd, as they defeated failing Long Beach State, three game to

none in their 1975-76 home finale last Friday night in Robertson Gym.

From the beginning, there was little doubt that the Gauchos would win the match, the question being how many games it would take. Long Beach came to UCSB sporting a very mediocre 5-6 record, but their lack of strength stems from their loss of 6-6 All-American

candidate, Tim Hill.

Hill, a member of the U.S. National team, was taken out of action for the remainder of the 49ers season, when he broke his ankle two weeks ago against Pepperdine. Without Hill, Long Beach put out a valiant effort, but proved no match for the Gauchos, and succumbed in straight games.

The 49er's lack of strength, however, proved to be more beneficial to the Gauchos, then just giving them an easy victory. The game gave coach Gus Mee an opportunity to play some of his untested talent, and give them some valuable experience before he takes his team to regional competition.

Senior Vern Rye, who has only seen sporadic play started and played most of the game for the Gauchos, contributing some fine block and spikes to the UCSB victory.

Long Beach only really played well against the Gauchos in the first game, which UCSB won, 15-13. Hitter Rich Davis was the 49er's only threat, although setter Scott Young, and hitter Mike Rangel also played well for Long Beach.

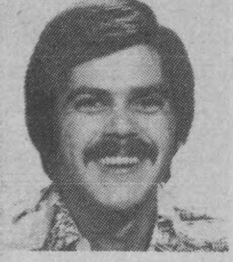
In the last two games, which the Gauchos took, 15-7 and 15-11 respectively, the 49ers appeared to be fading, and proved little contest for the Gauchos. The victory finishes off the Gauchos' season record, at 9-3, and qualifies them for a berth at the NCAA regional tournament to be held this year in UCLA's Pavilion.

**REGISTER TO VOTE**

### CHEERLEADER TRYOUTS

First Practice Monday, April 26 5:00 p.m.  
Rob Gym 2120 Call 685-3040  
or 961-2517 for more information.

**UCen Barber Shop**  
introduces  
**Rodger Valencia**  
Hair Stylist



With the addition of Rodger to our staff, we can now offer the latest techniques in hairstyling and grooming for men and women.

UCen Rm 1143 Appointments 968-7617

**FREE READING, WRITING, STUDY AND SCIENCE SKILLS IMPROVEMENT**

Programs Still Open at the Reading Study Center:

GENERAL STUDY SKILLS - Beginning 4/19, Mon. & Wed., 11:00-11:50, for 3 weeks.

STUDY & READING SKILLS - An introductory overview, 1 meeting, Thurs., 8:00-9:50 a.m., 4/22 or 4/29.

SCIENCE SKILLS - For lower division math and science classes - 3 meetings, repeated throughout the quarter, Tues., 1:00-2:50.

TEST-TAKING - 1 meeting, Mon., 1:00-2:50, 4/26, 5/17, 5/24 or 5/31.

WRITING GROUPS - 1.) Writing with a purpose, 1 meeting, 4/23, Fri. 10:00-11:50 (primarily for Subject A students)  
2.) Beginning college writing, 3 weeks, Tues. & Thurs. 11:00-11:50, beginning 4/20.

VOCABULARY IMPROVEMENT - 2 meetings, Mon. 1:00-2:50 beginning 5/3.

Our second session of reading speed and comprehension groups begins mid-quarter. Individual assistance is available in all academic skills throughout the quarter. For more information or to sign up please come in.

**READING STUDY CENTER**  
Bldg. 443, Room 119  
Mon.-Fri. — 8-12, 1-5 961-3269

**DUNALL'S**

SANTA BARBARA 605 State  
Canteens  
GOLETA 5968 Hollister

★ **IMPORTANT NOTICE** ★

All registered on campus organizations desiring trailer space **consideration** for the 1976-77 school year must pick up in, and return to, the A. S. Office **an application form**, no later than 5 p.m., April 23. The Student Committee on space will hold allocations on Thursday, April 29.

**MAYITAS**  
OPEN DAILY  
7 a.m. to 10 p.m.



**SPECIAL BREAKFAST**  
7 a.m. to 12 noon  
Come See What it is!

WE SERVE BEER!  
6547 Trigo Rd. Isla Vista 968-1916

**COPIES 3/2c**  
overnight No minimum

**KINKO'S**  
174 Aero Camino 964-3527  
6550 Pardall I.V. 968-2165

# 'Lack of Depth' Key To Gaucho Spikers' Defeat At Cal State-L.A.

By Tony O'Rourke  
 "We simply had too many holes in our team's depth to be competitive in a dual meet with a strong and well-balanced team like this," confessed UCSB track coach Sam Adams, in light of his team's 96-48 loss to Cal State - L.A. this past Saturday in Los Angeles.

The absence of sprinter Allen Ludiway and distance ace Tom Razzeto definitely hurt the UCSB team's chances for a victory, as

they were crucially missed in their respective specialties.

Trailing by only two points after the tenth event of the meet, UCSB's combination of injured and absent tracksters and a shortage of depth in the sprints, proved too much to overcome a solid Cal State team, as they managed only a single point through the remaining eight events of the meet.

Despite the UCSB loss, there were a number of solid individual

performances turned in by the team's members throughout the warm and windy day's action. Versatile John Goldhammer had a remarkable afternoon, winning not only his specialty the discus, in an excellent 172'7", but also the shot put and the javelin. He concluded his days stellar showing by filling in for the absent Allen Ludiway in the quarter-mile relay and dispelled any doubts that weightmen aren't gifted with speed, by turning in a speedy relay leg.

Buddy Kring also performed well in the field events, by capturing valuable first place points in the high jump with a 6'6" effort.

Milers Rich Fields, Dave Boyet, and Tom Pulte bucked imposing headwinds to sweep the slightly shorter 1500 meter race from their host competitors, taking first through third respectively. Gaucho Tom Edwards raced away from the field in capturing the two-mile in 9:30.0, though somewhat slower than his regular pace of 9:10.0, thus demonstrating the ill effects the wind had on the of the events.

While the wind seemed to make running difficult for the distance runners, the Cal State sprinters seemed to thrive on the opportunity to run with it at their backs, as they completely dominated the sprints. Led by John Foye's wind-aided 10.7 victory in the 100 meters and Larry Rowel's 2.19 win in the 200 meter furlong, UCSB

## Men's Tennis Loss—

### Netters Lose To West Valley, 5-4

By Steve Spanier

Unfortunately for Santa Barbara, the five and one half hour trip from Saratoga that the West Valley tennis team underwent this past Friday did not go to waste, as West Valley caught UCSB off-guard, and scored a hard-fought 5-4 victory. The match was tilted early in the favor of the visitors as they won four of the six singles matches. Faced with winning all three doubles matches, UCSB was just not up to the task, although the netters made a valiant comeback attempt.

The match was played under horrible tennis conditions. Facing chilling, nearly gale-force winds, neither team performed to its utmost level of ability. This is not to take anything away from a very fine West Valley team which has the inside track on becoming the state Junior College champions. West Valley displayed uncommon depth for a JC team, and this proved decisive as the afternoon wore on.

All of the singles matches were extremely close, most of them going right down to the wire. The top three Gauchos lost by only 11 games in a total of 6 sets, twice by scores of 7-5 and once by a 7-6 tally. In the number 4 slot, Ken Koch forged a gutsy 7-6, 2-6, 6-3 win over his adversary to keep the netters in the contest. Meanwhile, Dave Conrad produced some fine shots to stop his West Valley counterpart 6-1, 6-7, 7-6. Both Ken and Dave have been playing skilled tennis lately, and will undoubtedly figure prominently in UCSB's tennis future.

The doubles matches almost turned the tide for the Gauchos, but lack of concentration finally spelled defeat. Bruce Matthews and Tim Sunderland came back from earlier setbacks to drop the West Valley first doubles team 6-3, 6-4. Similarly, Owen Chambers and Dave Conrad took a 6-4, 4-6, 6-4 decision from their competition to make the final count 5-4 in favor of the visitors from Saratoga. The loss dropped the team's season record to 8-7.

Today the team goes on the road to face Cal State Bakersfield at 11 a.m. The Gauchos blanked Bakersfield 9-0 in their only other meeting this season. After that, the netters continue on to San Jose State for a 2 p.m. match against the highly-ranked Spartans. The next home match is against San Diego State at 2:30 p.m. April 21.



GAUCHO MATT McSHANE has a spike shot blocked by Curt Hanson and Rich Davis (number 10) in match against Cal State-Long Beach last Friday in Rob Gym. UCSB won the match in three straight games, 15-13, 15-7, 15-11.

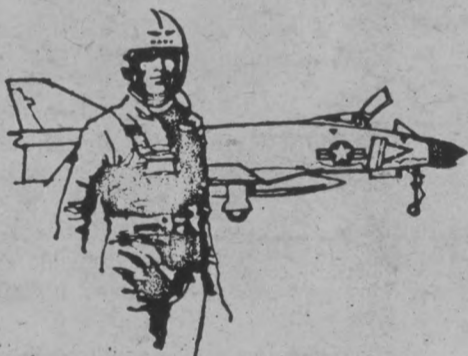
Photo: Doug McCulloh

managed to avoid a sprint shutout by Richard Curtins fine third place effort of 22.3 in the 200 meter race.

In coming action, Coach Adams is looking toward the

prestigious Mt. Sac Relays, where he'll tentatively enter both the distance medley (1320, 440, 880, Mile) and the sprint medley quartet (220). Standout John Goldhammer will also compete.

The U.S. Navy is seeking qualified individuals to serve as commissioned officers in the fields of



AVIATION  
 NUCLEAR POWER  
 CIVIL ENGINEERING  
 SURFACE PROGRAMS  
 SUPPLY CORPS

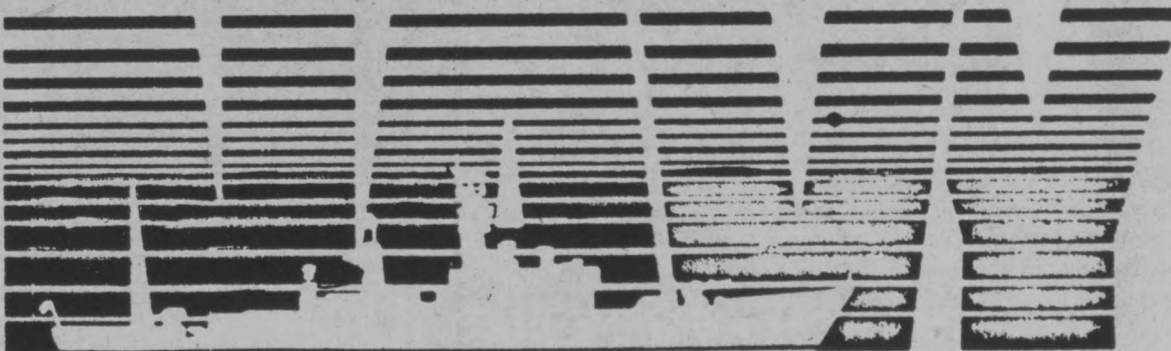
SCHOLARSHIP POSSIBILITIES FOR FRESHMEN AND SOPHOMORES

Seniors may apply now and be guaranteed a position after graduation

All degrees are considered

U.S. CITIZENSHIP REQUIRED MAXIMUM AGE 27

For further information see  
 THE NAVY COLLEGE INFORMATION TEAM  
 In front of the UCen  
 April 19 - 22, 10 a.m. - 2 p.m.  
 Or Call (213) 688-2750.



# Amnesty International Attacks World-wide Torture Practice

By G. Bruce Smith

Torture of prisoners throughout the world was the topic of a lecture given by a representative of Amnesty International (AI) during last week's International Week sponsored by the International Relations Organization.

"What you are going to hear will not be pleasant," said Daniel Hirsch, Southern California coordinator of Amnesty International, as he began his talk. Hirsch went on to describe a number of tortures used widely, including the popular method called the submarine," which

involves ducking the head of the victim in excrement and blood.

"Torture is a way of terrorizing other people," Hirsch said, pointing out that the only way many governments can gain support is through the use of terror.

Methods of torture are not only surviving, but are being refined. Businesses are investing in producing new equipment, classes are being conducted to train students in techniques, and conferences are being held on torture. The United States has also been involved, having built "tiger cages" for Vietnam during

Thieu's rule, and having trained torturers at the International Police Academy in Washington, D.C.

Amnesty International also works for the release of political prisoners and others detained for conscientiously held beliefs.

"The way we work, and we've been pretty effective, is to inundate governments with telegrams, letters and other forms of public pressure," Hirsch said. Members of AI work in several different ways; by "adopting" prisoners and working for their release, or by joining the "telegram tree," sending cables when prisoners are threatened with torture or death.

Persons interested in joining Amnesty International or organizing a local chapter should contact Daniel Hirsch by calling collect at (213) 473-3933, or by writing: Amnesty International, P.O. Box 106, 308 Westwood Plaza, Los Angeles, Cal. 90024.

## Farm Initiative Gains Support

The United Farmworkers Union (UFW) has announced that the farm labor initiative drive is progressing very well in Santa Barbara County.

The UFW is collecting signatures around the state in an attempt to place an initiative on the November ballot. The initiative would guarantee secret ballot elections for the nearly 300,000 farmworkers in California. The initiative campaign was launched on April 1 in response to the Agricultural Labor Relations Board's need for established funding from the

State Legislature.

Tom Nagle, spokesperson for the UFW, described the success of the initiative campaign in this county. "We were originally trying to get 500 signatures daily in this county, but we are doing much better than that and have reset our daily goal to 650 signatures," he said.

The union will be completing the initiative campaign on April 30. Persons interested in signing the petition can do so at the Center for Chicano Studies in building 406 on campus.

## Hayden Slide Show

A slide show on Tom Hayden will be presented tonight at 9:30 at the IVCC meeting in the planning office. Discussion of the Economic Development Corporation will also be on the agenda for the meeting, which begins at 7:30.

**Associated Students UCSB / Pacific Presentations Brings You**  
OUTDOORS ON THE GRASS



**FLEETWOOD  
MAC**

**PLUS SPECIAL GUESTS**

**U.C. SANTA BARBARA CAMPUS STADIUM**  
**Sunday, May 2 12 Noon**

Tickets \$6.50 UCSB Students, \$7.75 General Admission (includes 25 cent parking). Available at University Center UCSB, Open Air Bicycles, Fancy Music, Music Galaxy, Morninglory Music. Please no glass containers, cans, drugs, knives, dogs.



**ATHLETIC  
SHOE  
CLEARANCE**

**SAVE  
UP TO**

Special  
Groups of

**50% OFF**

FAMOUS NAME BRAND SHOES BY

**adidas**

*nike*

**Riddell BROOKS**

**PUMA**

*Tiger*

**SOFTBALL, BASEBALL,  
FOOTBALL, TENNIS,  
TRACK, CROSS-COUNTRY,  
SOCCER, BASKETBALL,  
WRESTLING, JOGGING**

VALUES TO 13.99

**NOW 6.85**

REGULAR 14.99 TO 19.99

**NOW 9.85**

REGULAR 20.99 TO 29.99

**NOW 14.85**

REGULAR 30.99 TO 39.99

**NOW 19.85**

**HURRY IN NOW. QUANTITIES  
LIMITED TO STOCK ON HAND!**

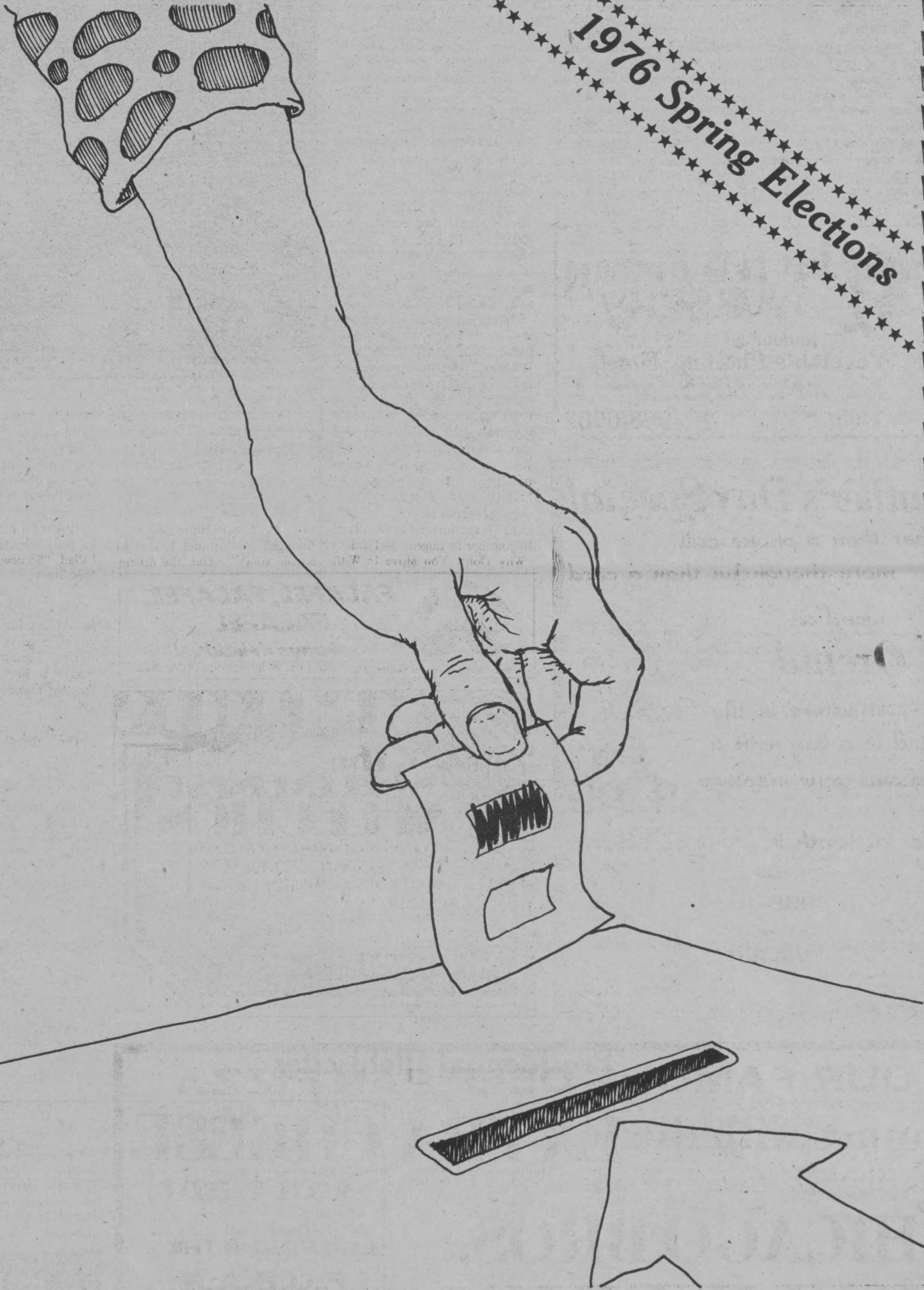
**Copeland's  
Sports**

OPEN  
Mon - Sat 9:30 - 6  
Sun 12 - 5

1230 STATE ST.  
Downtown  
Santa Barbara

# A.S. Voter's Guide

1976 Spring Elections



# Sample Ballots

Internal Pres.	External Pres.	Exec. V.P.	Const. Amend.
Tracey St. Johns <input type="checkbox"/>	Eileen P. Walsh <input type="checkbox"/>	Paul Pooley <input type="checkbox"/>	New Constitution <input type="checkbox"/> yes
Regina Jackson <input type="checkbox"/>	Victor Becerra <input type="checkbox"/>	Scott Landow <input type="checkbox"/>	<input type="checkbox"/> no
"Apathy" Coffman <input type="checkbox"/>	Mitch Gertz <input type="checkbox"/>	Paddy Nash <input type="checkbox"/>	<input type="checkbox"/>
_____ <input type="checkbox"/>	Pete Pomeroy <input type="checkbox"/>	_____ <input type="checkbox"/>	<input type="checkbox"/>
write in <input type="checkbox"/>	Cindy Wachter <input type="checkbox"/>	write in <input type="checkbox"/>	<input type="checkbox"/>
Admin. V.P. <input type="checkbox"/>	_____ <input type="checkbox"/>	<input type="checkbox"/>	<input type="checkbox"/>
_____ <input type="checkbox"/>	write in <input type="checkbox"/>	<input type="checkbox"/>	<input type="checkbox"/>
Rich Perrigo <input type="checkbox"/>	<input type="checkbox"/>	<input type="checkbox"/>	<input type="checkbox"/>
_____ <input type="checkbox"/>	<input type="checkbox"/>	<input type="checkbox"/>	<input type="checkbox"/>
write in <input type="checkbox"/>	<input type="checkbox"/>	<input type="checkbox"/>	<input type="checkbox"/>
<input type="checkbox"/>	<input type="checkbox"/>	<input type="checkbox"/>	<input type="checkbox"/>
<input type="checkbox"/>	<input type="checkbox"/>	<input type="checkbox"/>	<input type="checkbox"/>

Vote for one | for each office

GLOBE 43861

Rep. at Large - Vote for 4 or less	Off-Campus Rep. - Vote for 6 or less
Guy Chambers <input type="checkbox"/>	Dallas Riley <input type="checkbox"/>
Walt Sadler <input type="checkbox"/>	Ann Dinsdale Davis <input type="checkbox"/>
Gary Putnam <input type="checkbox"/>	Arlene Lozano <input type="checkbox"/>
Alan Yamamoto <input type="checkbox"/>	Mark W. Hertel <input type="checkbox"/>
Alice Valdivia <input type="checkbox"/>	Steven Ashby <input type="checkbox"/>
Deborah Dent <input type="checkbox"/>	Marc Wutschke <input type="checkbox"/>
Emily Roth <input type="checkbox"/>	J. Anthony Chavez <input type="checkbox"/>
Seth Freeman <input type="checkbox"/>	Dixon A. Oriola <input type="checkbox"/>
Tom Alberts <input type="checkbox"/>	_____ <input type="checkbox"/>
_____ <input type="checkbox"/>	write in <input type="checkbox"/>
write in <input type="checkbox"/>	_____ <input type="checkbox"/>
_____ <input type="checkbox"/>	write in <input type="checkbox"/>
_____ <input type="checkbox"/>	_____ <input type="checkbox"/>
_____ <input type="checkbox"/>	write in <input type="checkbox"/>
_____ <input type="checkbox"/>	_____ <input type="checkbox"/>

GLOBE 43861

Rep. at Large - Vote for 4 or less	RHA Rep. - Vote for 3 or less
Guy Chambers <input type="checkbox"/>	Greg Boyer <input type="checkbox"/>
Walt Sadler <input type="checkbox"/>	Aaron Chaney <input type="checkbox"/>
Gary Putnam <input type="checkbox"/>	Don Heinsohn <input type="checkbox"/>
Alan Yamamoto <input type="checkbox"/>	_____ <input type="checkbox"/>
Alice Valdivia <input type="checkbox"/>	write in <input type="checkbox"/>
Deborah Dent <input type="checkbox"/>	_____ <input type="checkbox"/>
Emily Roth <input type="checkbox"/>	write in <input type="checkbox"/>
Seth Freeman <input type="checkbox"/>	_____ <input type="checkbox"/>
Tom Alberts <input type="checkbox"/>	write in <input type="checkbox"/>
_____ <input type="checkbox"/>	_____ <input type="checkbox"/>
write in <input type="checkbox"/>	_____ <input type="checkbox"/>
_____ <input type="checkbox"/>	_____ <input type="checkbox"/>
_____ <input type="checkbox"/>	_____ <input type="checkbox"/>
_____ <input type="checkbox"/>	_____ <input type="checkbox"/>
_____ <input type="checkbox"/>	_____ <input type="checkbox"/>

GLOBE 43861

## Presidential Plebiscites

**DEMOCRATIC PRIMARY**  
(Vote for one only)

Jerry Brown .....	<input type="checkbox"/>
Jimmy Carter .....	<input type="checkbox"/>
Frank Church .....	<input type="checkbox"/>
Fred Harris .....	<input type="checkbox"/>
Henry Jackson .....	<input type="checkbox"/>
Ellen McCormack .....	<input type="checkbox"/>
Morris Udall .....	<input type="checkbox"/>
George Wallace .....	<input type="checkbox"/>

**REPUBLICAN PRIMARY**  
(Vote for one only)

Gerald Ford .....	<input type="checkbox"/>
Ronald Reagan .....	<input type="checkbox"/>

# Internal President

## Tracey St. Johns

I once thought I could solve all student problems with my new ideas and enthusiasm; that was a year ago when I took office as an A.S. Representative-at-Large. Well, experience has displaced my naivete, but not my enthusiasm.

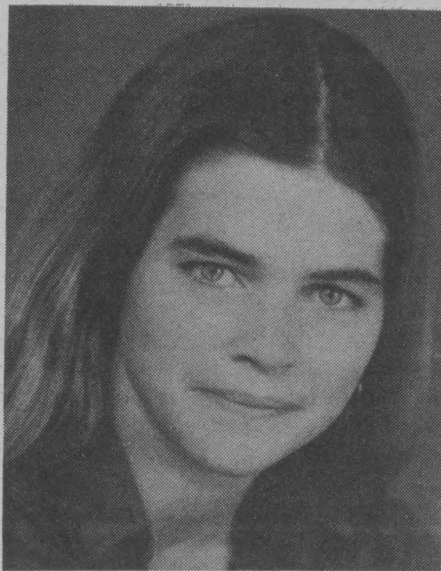
A strong student government can effectively advocate student interests. For instance, the President of the University has begun the process for the selection of a successor to Chancellor Cheadle. This is the most important decision in a decade for UCSB students. Had it not been for the aggressive efforts of the A.S. Officers and Leg. Council students would have been left out of the selection process.

I will not boast or pretend that student government can make instant change; it can not. But it can make a difference if supported by the students. The major difficulty with student movements is the inability of the participants to make

needed compromise. In realistic terms the highest qualification any president can have is patience and tolerance. My work with such diverse groups as the Chicano Studies Center, the Athletics and Leisure Services Department and the Chancellor's office has shown me how to compromise.

Qualifications don't impell me to run for A.S. Internal President; I am running because I care. The Associated Students is a valuable and vital organization which provides many services to UCSB students. For example, we run the A.S. Bike Shop which provides students with low cost bicycle maintenance and parts. A.S. offers free legal service, an I.V. housing evaluation, guide and a Concerts and Lectures program. Out fees subsidize Intramurals, Women's Intercollegiate Athletics and the Recreation Department.

A.S. also recruits students representatives who vote on University committees. It is a little known fact that



most campus decisions are made on Chancellor's and Academic Senate committees. We must press for student positions on the remaining committees particularly the faculty review committee (C.A.P.).

However, the efforts of student

representatives can not be effective without general support. It is often stated that students have no opinion or are slipping back into the frivolity and apathy of the 50's. I do not believe this. People often don't feel that an individual can do anything or that anyone cares what they think. It is not surprising that people feel this way in an institution of 15,000 people. This is just how I felt when I came to this campus. There is no easy answer to the difficulty of communicating to so many students. But the A.S. organization tries to involve as many individuals as possible. We rely on hundreds of students to run our services, as well as chair and participate in our campus and statewide committees.

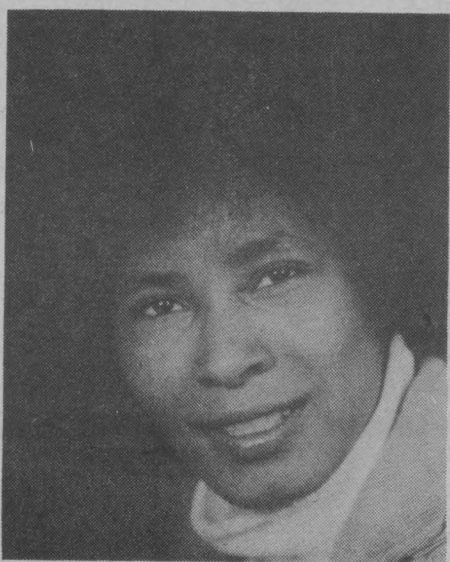
What I've tried to do in this statement and in my campaign literature is to urge students to become aware of the issues and express an opinion. Otherwise government on any level becomes a sterile, impersonal institution. With your help A.S. can be a more dynamic, humanistic institution.

We hear a great deal about education these days, but few of us have the opportunity to take a forthright stand on its behalf.

The main thrust of student politics lately has been in areas outside the realm of academic affairs. Why are we in college? For some strange social reasons? I think not. I entertain the notion that the voice of a single student CAN make a difference. I hold no illusions that I, one student, can reshape the forces on this campus governing tenure policies and effective teaching. But I would like a hand in moving those forces.

Too often excellence in teaching has gone unrewarded in an academic community that priorities research first, and teaching somewhere between second and last, in the name of academic survival. Such has not always been the case and I hope it will be in the future.

The quest for academic and cultural excellence must assume the highest priority in any student government over which I hope to preside.



In the last six months we have witnessed perhaps a dozen instructors of extraordinary excellence axed for the tenure rosters. Their only offense was teaching too well. Brandts, Button, MacDonald, Chavarria: Their names are too numerous to mention. Why? Why,

## Regina Jackson

when not a single STUDENT was called upon for advice in the tenure at hand?

A national survey recently concluded that student evaluations on faculty tenure closely coincided with the decisions and opinions of professorial colleagues. It is time for a firm hand to take the reins and stop this nonsensical behavior of student exclusion.

And again, we read that a new chancellor is about to assume office at UCSB — without a single student's approval! I urge and will fight for our participation in the search for and the selection of a new chancellor.

Some of you may ask of my qualifications for holding office. I can safely say that I have already served my time on the firing line of A.S. politics as a former elected officer. I seek a second term with grave concern for our future. My tenure in office was not always a pleasant one. I have learned two lessons;

Whenever people meet in polity, there is bound to be conflict. But no one ever progressed without compromise! Thus, in the forthcoming year I foresee conflict and compromise with conservatives and radicals — and all the rest of us in between.

It is my hope that 1976 will be the turning point, the academic door to the future. Talented students, brilliant faculty members are here. Working together we can produce achievements of national, yes international, scope for the enlightenment of civilized people everywhere.

With the words of Clarke Kerr, I conclude and concur: "This University is not engaged in making ideas safe for students. It is engaged in making students safe for ideas."

When you cross off your ballot tomorrow, please remember my name, Regina Jackson, A.S. Internal President.



## "Apathy" Coffman

student government? My school of political thought, Apathology, claims that the average person hold little interest in political affairs. Is there a more logical philosophy to run on than one which is deeply revered by the majority?

As students we were first alienated by student government; only then did we become apathetic. In our apathy we express our distaste for student government. We have been alienated by the elitist, interest-group oriented candidate who typically runs for A.S. government office. Mostly, he/she is an egomaniac who needs and wants power, who achieves self-gratification at the expense of OUR interests — not to mention that holding a student-governmet office looks good on his record when he applies for law school. You may well ask how I've managed to escape my own interpretation of an egomaniac, since it would seem that I qualify. I want to make at least one thing perfectly clear: I have the support of no interest group. Obviously, no one in A.S. government has come out in my favor, no human being has acknowledged that my candidacy is anything but bunk! I've tried

not to listen to the criticism thrown in my direction for fear that it makes a whole lot of sense. God knows, having gone this far with the campaign, I'm not about to start making sense!

I honestly feel that most people don't understand the true meaning of apathy and that apathy is thus viewed in a dim light. From the time we enter the educational process until we die, we are told that apathy is the worst of human traits — it's even rated below sadomasochism, and believe me that's no fun at all. I feel apathy is a viable form of expression. We are free to choose our own course of action; even if we choose to do nothing, it's a choice. Contrary to our educational indoctrination, apathy is a healthy form of expression, a reputable choice. The only thing lacking is a candidate to take up the cause of apathy. I feel I am just the candidate apathy has been waiting for.

I'm sure most of you wonder just what type of platform I'm bringing to this election. In the true spirit of apathy, I have made promises to no one and have no personal desire for political power. Therefore, I have no platform in the

classic sense. As your internal President, I will present a clean slate.

The direction my administration takes will be up to you. For the first time in the history of student government, the student government, the student body will have a chance to be creative and to use the office of internal President as an instrument for its creativity. In a move designed to liberate your minds, I offer a few of the uncountable possibilities:

A SERIES OF HUNTER S. THOMPSON LECTURES.

A 12-LANE 4-TIER CLOVERLEAF FREEWAY IN FRONT OF THE ARBOR.

CONSISTENT SETS OF 15-FT. WAVES 365 DAYS A YEAR. BEEN DISPENSERS STRATEGICALLY LOCATED ON CAMPUS. CONDOM AND IUD MACHINES IN ON-CAMPUS RESTROOMS.

If you happen to find yourself in the area (mind you, don't make any concerted effort), stop and rap with a lonely pollstaffer — they're so lonely on election day. If you have nothing better to do at that time, you might mark a ballot for me. On the other hand, a non-vote is a YES vote for apathy!

Now that you're through laughing at my picture, I must emphasize that I'm wearing a mask! This mask has great symbolic significance to my candidacy. Many candidates who run for high executive office present a facade of sincerity and goodness masking the monster within. As a candidate of apathy, I want to emphasize this truism.

How can I, as a serious candidate, expect to win on an apathetic platform? Well, let me ask you this: HOW INTERESTED ARE YOU IN THIS ELECTION? Do you even care about

# External President



## Eileen P. Walsh

group has endorsed my campaign and that of Paddy Nash, who is running for exec. vice-president. Paddy and I are presently drafting a proposal for a women's studies program. We feel this university has a responsibility to provide its students with a quality education, and to do this it must close the gaps left by excluding women and minorities from the mainstream of academic life.

All of the candidates running on the Young Socialist ticket are people you've probably seen, heard of, or whose work you've seen the results of in the form of rallies, forums, posters and leaflets on matters that effect all of us here at UCSB, both on campus and nationally. We try to organize and educate students on these issues, such as the local labor struggles, administrative spying on students, and racial and sexual discrimination. Most recently, I myself have been working to form the Equal Rights Amendment Coalition, and working with the campus chapter of NOW, the National Organization for Women. This feminist

There is an unbelievably low representation of women in the administration (9.1%) and tenured faculty (6%) - and this on a campus where nearly 50% of students are women! Why is this? Years ago, the administration committed UCSB to an Affirmative Action program - where are the results? There is no excuse for the way women are ignored on this campus. A.S. government has the facilities and resources to do something about this, much more so than faculty and staff, and yet we hear nothing about it from our "representatives". A.S. government should take the lead in insisting on an end to present discriminatory practices, by demanding preferential hiring of women

until a more equitable balance is reached.

If elected, the Young Socialist candidates would do just that, in keeping with our day to day efforts against the oppression of women that is woven into the very structure of our society. We defend women's right to choose abortion as an alternative to childbirth; we demand free gynecological care at the Student Health Center because all health care is a necessary service; and we support the establishment of free 24-hour child care - nobody should be deprived of an education simply because they are parents. And in the interests of both women and men, we urge students to participate in the nationwide effort to add the Equal Rights Amendment to the United States Constitution. 200 years is long enough-long enough not only regarding injustice towards women, but also exploitation of minorities, and political repression and spying, as we see on this campus. Bureaucratic fence-sitting must end if the situation is to improve. Although A.S. government involves many issues, in campaigns most of these become non-issues. Have you yet heard

any candidates say they would oppose student input in the selection of a Chancellor? Have any declared that concert prices should be raised, not lowered? Probably not, because some issues, it can generally be agreed, are obviously the province and duty of student government. But to assume that students are not interested in or effected by matters of worldwide importance - to label as "special interest" the struggles for human rights against racism, sexism and political repression - is to ignore the facts. And accepting these problems as something as predictable as a sunrise or as unavoidable as an earthquake, is to perpetuate them. We students should not underestimate the power we have - this university wouldn't exist without us, and it should be made to answer to us. Through A.S. government we have a chance to consolidate our financial power and physical energy, and move to improve UCSB for all of us. If you agree with this perspective on student government, vote for the Young Socialist candidates: Eileen Walsh for external president, Paddy Nash for executive vice-president, Gary Putnam for rep. at large, and Steve Ashby and Marc Wutschke for off-campus reps.

## Victor Becerra

Hello, my name is Victor Becerra and I'm running for the office of External President. I feel that the position of External President is especially important and needs a person who is both self-confident and responsible. I feel that I have both these attributes. Furthermore, I feel that "Leg Council" must become a body which truly represents all student interests, rather than representing a few self-interests; which continually has been the case in the past. I am also hopeful that this years election will be run on an "issue oriented platform and that the "smear" politics that have been used in the past will not appear at all. In this way I feel that you the student body will be more able to cast your vote for the candidate whom you feel will represent you the best.

Some of the issues I feel are pertinent to students on this campus and, which I

plan to raise at the statewide level as well as at the campus level are as follows.

1.) More student representation on standing Academic Committees. (i.e. tenure appointments, faculty selection and interview committees, department curriculum and course development committees etc...)

2.) Active student participation on Chancellor selection Committee.

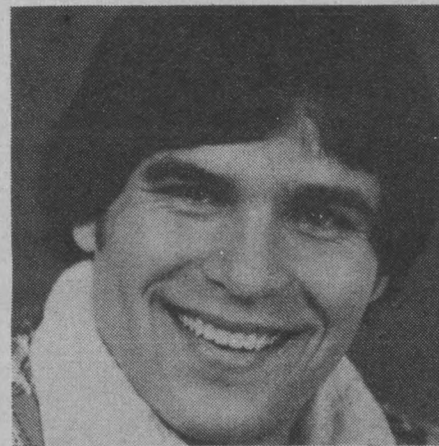
3.) That the students sitting on the above mentioned committees be giving full voting rights.

4.) Appropriate funds to, and support of all women's activities on the campus.

5.) Support Intramurals and Inter-Collegiate Sports, especially Volleyball and Waterpolo.

6.) Support more equitable funding by A.S. towards Women's Sports.

7.) I support the appointment of a committee to investigate the possible



lowering of book prices in the book store.

8.) Support a "very open door" policy to hear student concerns over issues they feel are relevant.

My experience has been quite extensive both at the campus level as well as at the state level. For this reason I feel that I am the best qualified for the position of External President. Some of the activities that I've been involved with over the last

two years have been as follows:

1.) Currently sitting on A.S. Advisory Committee to Financial Aids.

2.) Sat on Interview and Screening Committee for Student Affirmative Action Conference held in Fall Quarter 1975.

4.) Past Chairperson of "El Congreso". (Fall Quarter 1975)

5.) Chaired Student Advisory Committee on selection of Chairperson for Chicano Studies.

6.) Member of the UC Chicano Steering Committee, a State-wide Body.

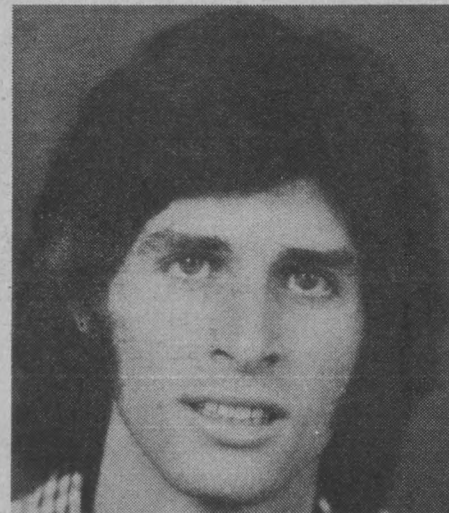
Lastly, I am very anxious and excited about bringing new ideas and issues to Leg Council. More importantly, I feel that Leg Council must become more accountable to you the students and the issues you feel are important to you. Therefore, I would appreciate it greatly if on next Tuesday or Wednesday you cast your vote for me. VICTOR BECERRA FOR EXTERNAL PRESIDENT. THANK YOU.

## Mitch Gertz

Throughout this election, students have been bombarded with tons of ideas from all candidates about what each will do, if elected. These ideas are usually good ones, and most candidates feel that they are necessary in order to attract different groups of voters. You know as well as I do that these promises correlate poorly with what someone really does after they are elected.

The issues of ISLA VISTA INCORPORATION, RENT CONTROL, SUBJECT A, BEER PUBS ON CAMPUS, CLEANING UP TAR ON THE BEACHES, STUDENT SURVEILLANCE, and others, are very important issues. Most of us agree on all of them but it is important that the next External President concern himself or herself with more than just these popular issues. For example: the lack of STUDENT INPUT into many decisions which affect all students on this campus. This problem has been neglected in the past.

CHANCELLOR SELECTION and TENURE DECISIONS as well as U.C. INVESTMENTS POLICIES have been determined without sufficient STUDENT



INPUT. Most of us feel a great need for more input in these areas. But little has been done in the past to gain student input from all students instead of just a handful.

How many students ever have any contact with their student body representatives after the election? It is a safe guess to say not many. How many freshman even knew what Associated Students' government was until this election rolled around and candidates came for their votes. How many ever knew what happened to their \$16.25 A.S.

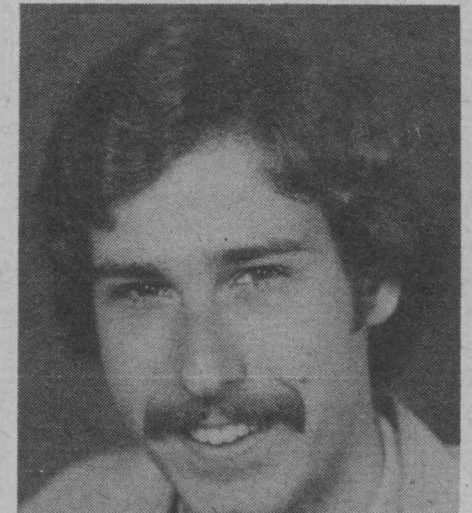
(Continued on p. 5, col. 1)

## Pete Pomeroy

Over spring break, I rode in a bicycle race in Mexico. As I came sailing down a hill and into a turn I noticed a boy sitting on the highway guardrail, waving to the "Americanos" as they whizzed by on their bicycles. I smiled, waved, and then noticed that he had no shoes, that his trousers were torn, and that there was a cardboard shack off the road behind him which I guessed must be his home. I was stunned. For the next ten miles, all I could think to myself was "That kid deserves so much more than just a wave."

Likewise, students at UCSB deserve so much more than just a diploma I am running a campaign on ideas, hot new ideas that are well within our reach. These ideas are designed to provide the students with a better college education and a better college experience. They are ideas that I have formulated over the past four years at UCSB and over the past quarter and a half as a Legislative Council Representative.

GRADUATE PLACEMENT: A large amount of resources are spent to recruit incoming students to UCSB. These resources must be rechanneled into programs recruiting the top employers



and graduate schools in the state and in the country to interview our graduating seniors. UCSB has one of the highest acceptance rates of its pre-med. Graduates into medical school in the entire UC system. Its Department of Economics is highly thought of by graduate Education Department is one of the finest in California. These facts about UCSB must become known; they must replace the stigma of the riots and of the burning of the Bank of America. UCSB owes a duty to its students to place graduates in good jobs and good graduate

(Continued on p. 5, col. 3)



## Gertz...

(From p. 4)

fee per quarter or even that they were paying such a large sum to a student body government. I have heard time and time again students blamed for being apathetic. I don't believe this. I see an important function of A.S. as getting out to the students, and not waiting for students to come to them. Currently, I am helping put together what will be one of the most important services that A.S. can offer: THE A.S. INFORMATION AND RECRUITMENT SERVICE. The job of this service will be to formulate and implement throughout the year a systematic program of presenting A.S. government in a creative, personal and non-political way to all students and campus groups.

So that you can decide whether or not I am qualified to serve you as a representative of UCSB in student matters on the state, federal, local

community, academic and student body level, you have every right to know what I have done in the past. Within UCSB, I was a Resident Assistant and chairperson of the Organizations Coordinating Board - a joint Chancellor-student advisor board. On the local level, I was active in Helpline and the Lompoc Prison Project. On the state level, I worked for Tom Bane, chairperson of the state subcommittee on student elections. On the federal level, I worked for Senator John Tunney, writing some very important legislation and getting support from other Senators for S. 792 - The Part-Time Career Opportunity Act.

I hope that this can give you some sense for my qualifications. Because the next external president will represent this student body at all levels, it is important that s/he have experience on all levels.

Let's not have another year of endless frustration. Elect someone who represents all students and not a special few. Help me make Associated Students exactly what the name suggest: an ASSOCIATED STUDENT BODY.

## Pomeroy...

(From p. 4)

schools. This can only be achieved by beefing up the already existing graduate placement programs.

PROFESSIONAL CLASSES: UCSB should offer at least one class in each of the professional fields (law, medicine, architecture, education, etc.) that students can take in their freshman year. By sampling these classes, students could set their direction early in their academic career. I have seen too many people at UCSB who have earned a major in Geography, then scratch their heads and say, "Hum, maybe I'll apply to graduate school in architecture and see if I like that."

STUDENT TENURE COMMITTEE must be established to provide positive input in tenure decisions from the student's point of view. In meetings that I have had with Dean Rickborn and Vice-Chancellor Alexander it was indicated that the administration would

not oppose such a committee. Furthermore, if the teaching evaluations are ambiguous and ineffective, they should be modified or replaced.

A.S. RENT TRUST ACCOUNT must be established and administered by a lawyer retained on behalf of the Associated Students. Rents would be paid into the account but would not accrue to the property owner until repairs had been made to the satisfaction of the renters and of the court.

REFERENDUM PLEBICITES should be held each quarter, surveying student sentiment on state-wide as well as national issues. If students are to be the leaders of tomorrow, they must have a say on the issues affecting them today.

NEXUS serves as an important check on A.S. government, but has not served to identify student needs to its greatest potential. Special Nexus supplemented issues should come out discussing the Health Center and the lesser known services provided by the Office of Student Services, as well as other topics.

(Continued on p. 12, col. 1)

## Cindy Wachter

### EXPERIENCE

My long-time commitment to students gives me a sophisticated and personal understanding necessary for knowledgeable advocacy of student concerns:

-member, Reg. Fee Advisory committee

-2 term member, IVCC

-member, Housing Co-op organizing committee

-proponent of IV Incorporation

-formal presentations of student interests before UC Regents and County governing bodies

-active membership and participation in many important University, County, and Isla Vista committees and organizations

### SUPPORT

An abbreviated list of my supporters illustrates essential working relationships with members of A.S., the local community, the County and State:

-Jim Fox, Brooke Smith, A.S. Concerts Co-Chairs

-Frank Thompson, Dorm Rep. to IVCC

-Joe Doyle, member, Ecology Action

-Larry Kimmett, I.V. Planning Director

-Ed Maschke, Calif. Nuclear Initiative organizer

-James Slater, 3rd District County Supervisor

### PLATFORM

My platform reflects a continuing involvement in issues which affect student's lives and a commitment to increase student participation in all aspects of the governing process:

• HOUSING - Continue to pressure the University to keep enrollments down to improve the quality of life; move toward taking housing off the private profit market and toward forming housing co-ops; encourage tenant organizing for strength and protection of rights.

• STUDENT INVOLVEMENT IN COUNTY GOVERNMENT - Actively represent student interests before the County to offset Administration representation, to remind the County of their responsibility for the condition of local beaches, to gain a voice in decisions



relating to transportation, planning, and welfare; mobilize the student voting bloc by supporting a coordinated voter registration campaign.

• REG. FEES - Oppose any Reg. Fee increase; conduct a plebiscite or student opinion survey to help determine Reg. Fee priorities and raise the level of awareness about where student funds go; phase-out student support of Alumni Assoc. (\$100,000/year) while increasing funds to EOP, Financial Aid,

Intercollegiate Athletics, Intramurals and Recreation.

• ACADEMIC AFFAIRS - Support formal student input to faculty teaching evaluation process; statewide coordination of faculty evaluation guides; advocate academic credit for Subject A and elimination of the \$45 fee.

• STUDENT SERVICES - Support free gynecological care at the Health Center; expand and vary A.S. Concerts and Lectures programs, and enlarge A.S. Bikeshop.

Student government at UCSB has tremendous potential for power. I feel I can develop that potential into significantly increased influence in academic and non-academic matters which effect student's lives. I have watched and worked closely with Leg. Council for the past 2 years, and now the time has come for me to act on my convictions of what student government can be - an initiator of open dialog on all issues, a coordinator of individual and group interests, an advocate of student rights, and a County and Statewide power source. I feel I can provide the ideas, energy, and experience to help do this. I hope you'll agree that I'm the best candidate. Remember to vote.

# Executive Vice President

## Paul Pooley

The role of student participation in University governance is often questioned - is it real or is it an illusion? With direct control over a budget exceeding \$500,000 direct input into the allocation of another \$4,000,000, and student members on Academic Senate Committees, the answer is that student participation is very real.

Students before us fought for access to the decision making process. It is ours today not to sink back into apathy, but to use this hard-fought success to define new goals. Not solely for our own purposes, we must lead the process to become more responsive to general student needs - both on campus and in our community. We can, and must, change the role of students from being a pawn in their game to a position where we take our future in our hands.

The potential for leadership on this campus is as limitless as it is neglected. As Executive Vice President I will seek to provide this vitally needed student leadership. I will work to extend A.S. into the community, into the classroom, and into the administrative offices. No



longer can decisions be made affecting our lives as students without we, the students, helping to make the decisions. The authority of any government is predicated upon one principle: to be just, it must have the sanction and consent of the governed.

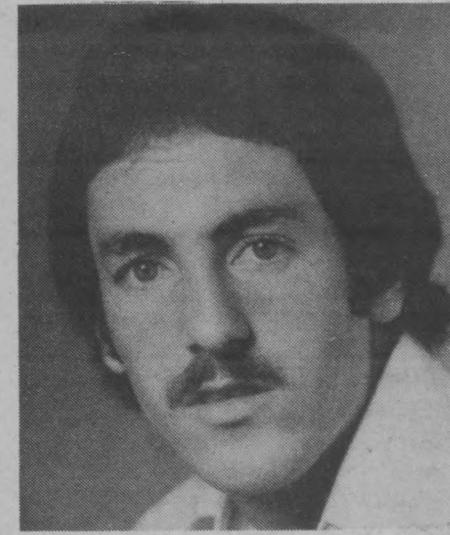
I am prepared to work for us as students in bettering the conditions in which we live, and in which we learn. Such issues as rent controls, equality in women's athletics, the establishment of a

(Continued on p. 6, col. 4)

## Scott Landow

If I thought that the majority of the student population was reading this article, I would outline issues that can build a campaign. As it stands now, I'm tempted to scratch some obscenities just to make sure that someone is reading. This is my major concern! You can win an election on campus with only 10% support of the students. People no longer take time to get involved. Along this avenue stems an even greater problem. Students don't have enough knowledge of where their A.S. fees go. How many people are aware that you can get your tennis racquet strung in the P.A. office?, or that the Women's Center offers services for men? It's time student government invest in advertisement and other media to announce the services available. It's our money, why not know what to take advantage of?

An issue that I've constantly spoken out for is free gynecological services. The Health Center provides general health needs at no charge. How can you tell me that a gynecological check-up is not a general health need? Where do we come off discriminating against half the student



population?

For years we've been discussing a Beer Pub on campus. With success achieved on the State University campuses, it's time we too acquire this long desired service.

Another strong concern of mine, is Subject "A". We're getting taken! We pay \$45 for the class and don't even get unit credit. Why should we pay for the inadequacies of our high schools? I advocate dropping the fee and establishing unit credit. I also support this

(Continued on p. 12, col. 2)

## Paddy Nash

The oppression of women on this campus is intolerable and the alleviation of the discrimination is long over due.

The primary focus of the Young Socialist campaign is on the fight for women's rights.

Eileen Walsh, candidate for ext. pres. and myself have been active all year in the campus chapter of N.O.W. We helped form the E.R.A. Coalition on campus and helped in organizing International Women's Day. Currently we are working with the Academic Senate Committee on the Status of Women at UCSB developing a Women's Studies Program. Together we are presenting the Feminist platform of the Y.S. candidates.

Many students at UCSB are also parents. In addition to their studies, they have the pressure of finding quality, low-cost child-care services for their children while they are attending classes and studying.

The University has taken no responsibility in aiding these students. The solution to this discrimination of student-parents is to establish free 24 hr. child-care facilities on campus.

Proper gynecological care, regular

check-ups and tests and counseling about contraceptives are not special frills to be offered to women at a price. They are basic necessities for a woman to insure and maintain her physical health. These services at the Student Health Center should be free of charge as are the other services offered. Maintenance of good health is everyone's right, not a privilege of those who can afford it.

Further, to insure good health, a woman must have control of her own body. The 1973 Supreme Court decision legalizing abortion is currently under strong and organized attack. The Y.S. candidates believe that it is every woman's right to choose an abortion, if she so desires, and to have access to safe, legal abortion services. There is a mounting right wing campaign to deny women the right to self-control which must be stopped.

The discrimination against women on this campus is a manifestation of the broader problem of sexism prevalent throughout the country. The E.R.A. is a document to put an end to the inequalities women face. Four more states are needed to ratify the E.R.A.



before 1979 or the amendment dies.

The Y.S. candidates support the E.R.A. and the campus E.R.A. Coalition in the struggle to win ratification.

The attacks against the E.R.A., like those against abortion must not go unanswered. Feminists must stand together in their fight to defend women's rights.

If elected, The Y.S. candidates will use the resources of A.S. office to fight for 1) free 24 hr. child-care facilities, 2) free gynecology care, 3) the right of women to obtain safe, legal abortions 4) the

(Continued on p. 12, col. 2)

## Pooley...

(From p. 5)

beer pub on campus, changes in tenure policy, and lids on pending reg fee increases must be dealt with today. Students must define broad areas of concern, I am prepared, as Executive Vice President, to take on this challenge.

We as students have a hard choice to make: either no voice in government, and therefore no government, or at once a better government. I ask for your support in seeking better government: one that supercedes factionalism and works to benefit us all.

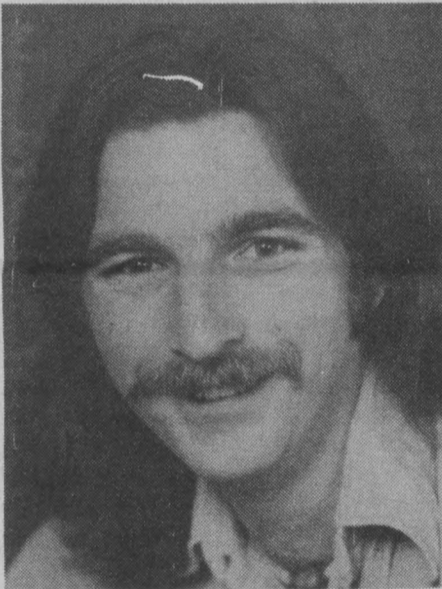
The basic message is simple. Let's make the future ours.

Sometimes the recognition of a person's past experiences help to indicate the strength of a person's future effectiveness. I have been Co-chair of Registration Fee Committee, Chair of Students for Udall, a member of the Campus Events Facility Committee and a member of the U.C. Student Lobby Annex.

Vote Paul Pooley for Executive Vice President.

# Administrative Vice President

## Rich Perrigo



I see the Associated Students as a union of students who elect a government. The purpose of this government is to facilitate a student's time spent here at the University. This idea seems to have been lost in the politics of the last few years. The function of A.S. government is to work exclusively for the needs of the students. The issues my running mate, Tracey St. Johns, and myself support, reflect this ideal.

There must be a greater student voice in tenure decisions and in the Chancellor Search Committee. We, as students, are the ones affected most by these decisions.

A student management rental

cooperative should be formed. Ideally this will produce better maintenance and what now goes to the rental companies as profits can be returned to tenants in the form of lower rents.

We will work with the College of Letters and Science, the Academic Senate and the Student Lobby to remove the fee from Subject A and acquire academic credit for it.

Vital Student Services such as the Bike Shop, intermurals, concerts and legal counseling must be maintained and expanded if necessary.

A survey conducted last fall by the Student Lobby showed that a beer pub on campus was high on the list of student

issues. We will work with the Student Lobby to bring this about.

We will also work with the Student Lobby to obtain a student counselor for financial aids to provide an alternative to the present counseling system.

These ideas are realistic goals that need to be implemented. But to turn these ideas into reality much organized and coordinated work must be done. This is why Tracey and I are running together, by working together in our respective positions, our ability to accomplish these goals will be greatly increased. So please, if you agree with our goals vote us in as a team - St. Johns and Perrigo. Because only by working together will we be able to bring about these needed changes.

# Representative at Large

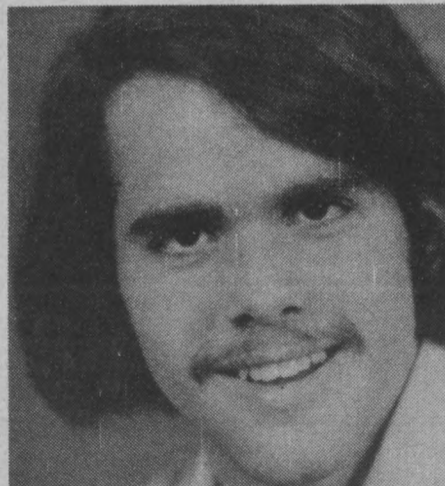
## Guy Chambers

Despite assertions to the contrary, A.S. Legislative Council is a viable means for change, provided first; that its members have a good knowledge of the facts surrounding any governmental issue, and second; a sense of direction as to how they will help resolve these institutional problems.

With respect to the first of these criteria, this year I have worked with the Academic Affairs Board and sit as student representative on the Academic Senate Committee on Experimental Courses. This experience gives me a feel and a familiarity for A.S. government and will serve as a foundation for positive achievement in the coming term.

As for the second necessary characteristic of a viable member of the Legislative Council, I would like to outline several of my goals:

**A.S. HOUSING CO-OP:** A co-op would allow the Associated Students to buy and lease apartments on a non-profit basis. Berkeley, UCLA, and Davis already have successful co-ops, Berkeley's being a multimillion dollar operation. Some of the legal foundation for the A.S. co-op



has been accomplished, but much work lies ahead.

**LANDLORD-TENANT BILL:** I would work with the Student Lobby Annex to reintroduce into the State Assembly a bill, similar to AB 1672 which would define the landlord-tenant relationship. The provisions of this bill would specify the responsibilities of the landlord and provide for several tenant remedies if the landlord defaults in his contractual duties.

**ISLA VISTA CONFIDENTIAL:** I believe the housing evaluation made a

(Continued on p. 7, col. 1)

## Walt Sadler

I feel the responsibility of the A.S. Leg. council is to reflect the interests of the students. The better the communication between the students and the Leg. council, the more operative and expedient our government will be. It is imperative that students on this campus have control over the monies to be allotted.

As a student, running for Rep-At-Large, I will work towards improving Leg. Council's accountability to the students. I will work at ensuring that students money are used for student purposes, as well as increasing the communication between Leg. council and the student body.

I am politically independent. That is, I am not affiliated with any partisan interests. This is an important asset because the position of Rep-At-Large is designed to represent the whole student body and NOT special interests.

I am in complete support of sustained funding for the intramurals program. Our intramurals program is one of the finest in the nation and boasts about 63% student participation. Another major area of



concern is the cost of tickets prices for the A.S. concerts. We must reinvest the concert profits in order to lower the rising prices.

**FREE GYNECOLOGY SERVICES** should be a high priority for funding. One half of UCSB students need this vital service and presently they are required to pay a \$20 fee for it. This fee is unfair to women and I propose its elimination.

I believe in the continued support for Isla Vista projects such as the Human Relations Center, the Open Door Clinic, and the Isla Vista Fud Co-op. I also

(Continued on p. 7, col. 3)

# Chambers...

(From p. 6)

major contribution to student awareness of the housing situation, and that this performance warrants continued A.S. support and resources to further aid students making housing decisions.

**LIMIT ENROLLMENT:** The UC Student Lobby statement on housing at UCSB reads: "All of the above causes and symptoms of the housing problem ... (except the Water Moratorium) can be traced back to shifts in University enrollment." Given present conditions, any increases in enrollment would deteriorate both the housing situation and the learning and environmental qualities of this campus.

**STUDENT EVALUATIONS:** Student evaluations of faculty performance are currently our only input into the tenure process. Funds for these student evaluations almost terminated this year. The A.S. Legislative Council should work to insure this vital student voice, both now and for the future.

**DEPARTMENTAL TENURE COMMITTEES:** The departmental committee is the first step in the tenure process, and should have student representation. This could be in the form

of a student representative on the department committee itself, or input from a student tenure committee composed of students, both graduate and undergraduate from within the department.

**INTRAMURALS:** The Intramural Program is one of the most popular programs on campus. It needs additional funding for referee clinics. These clinics will contribute greatly to the quality of the I.M. experience.

**NEW CONSTITUTION:** The new constitution will provide a more rational structure for A.S. government. I support the new constitution. Much needed reforms include combination of the two presidencies into one office, thus eliminating the friction inherent in the dual presidency. Also, elections will be held during winter quarter, allowing the new Legislative Council to form into a coherent policy-forming organization, and avoid confusion during spring quarter budget sessions.

In conclusion, I will work toward a more responsive, productive government. I feel that the issues I support, and the changes I advocate are important. I hope to be your representative. If you have any concerns or suggestions, and wish to get in touch, my phone number is 968-8629, please call me.

# Sadler...

(From p. 6)

advocate starting a student run Housing Management Co-op as the most practical way to combat soaring rent increases. I SUPPORT THE INCORPORATION OF ISLA VISTA.

These are just some of the issues I

support, now I would like to know and am prepared to listen to the needs and priorities of the students. I feel, in order to have an effective government, the

student interests must be represented, consequently, I will concentrate my efforts for the bettering of student and government relations. VOTE WALT SADLER \*\*\* Re-At-Large.

# Gary Putnam

The yearly slogan race is off again. As with every year most candidates try to get new ideas and issues. Some of this years promises are improving the bicycle situation on campus, allowing beer on campus, lowering rent in Isla Vista, Intramurals, cheaper concert tickets, et. Nearly all candidates agree on these programs. Thus they are hardly issues. Without any issues, then, the election becomes a High School style popularity contest for voters. It is here that the AS candidates break away from the others. In this campaign we hope to rise above the generalities and trivialities to propose that students take a serious look at our crucial problems, and what we should do about them. These problems include ending sex discrimination on campus, cutbacks, the lack of minority representation on campus, and the surveillance of political activists by the UCSB Administration. In our statements in this supplement, each AS candidate discusses specifically one of these areas.

My concern that I wish to discuss is that of the lack of minority representation on this campus. Although I am obviously Anglo, as a Socialist and one who believes in equal opportunity for everyone to get a good education I believe this is a serious concern.

The statistics are shocking. No more than 3% of the students at UCSB are Black, and no more than 4% are Chicano. Yet the combined percentage of Blacks and Chicanos of the population of California is 22%. The representation of oppressed nationalities in teaching positions are as dismal. Of the non-tenured faculty only 3.8% are Black, 6.1% are Chicano. In this Bicentennial year there are no Native American faculty members and only a handful of Native American Students.

Furthermore, the programs of the Oppressed Nationalities are constantly being threatened. Only last Spring the Administration attempted to do away with the Chicano and Black Studies Research Units. Only a massive demonstration of support by students saved these units. This was only one incident in a long series of attacks by the Administration. The Administration is presently being sued for failing to live up to their 1969 Affirmative Action agreements.

The AS candidates have been active in the struggles for support to the recruitment, hiring and programs of



oppressed nationalities at UCSB. We will continue that effort in A.S. office, using the resources available to us to us to educate and organize broad student support for minority programs.

The Young Socialist candidates will generate support for expansion of the curriculum in Black and Chicano Studies, Establishment of Asian American and Native American majors, and study Centers; expansion of the EOP program, the control of their own programs by the oppressed nationalities, preferential hiring of oppressed nationalities for faculty positions, and support to the lawsuit against the Administration.

The Young Socialist candidates haven't suddenly emerged. We are actively fighting for student concerns the year around. Besides our efforts to save minority programs, we have walked with the BFI strikers in Santa Barbara, supported the Farmworkers effort, and organized efforts against the Administrative surveillance of political activists. We have also held Forums on issues of very critical concern to students, such as against American involvement in Angola.

The Young Socialist candidates do not run to get their pictures taken or gather popularity votes. We feel it necessary to raise the issues that we do because this campus needs a strong student government that will educate and organize students to make the decisions on University policy and those problems that effect students that are endemic to our Society.

What kind of student government do you want? An activist student government or the present bureaucracy? If you're ready for a change vote Young Socialist; along with myself, vote Marc Wutschke and Steve Ashby Off Campus Rep., Paddy Nash Executive V.P. and Eileen Walsh External President.

# Alice Valdivia

The UCSB Administration, in an attempt to reduce enrollment, has arbitrarily abolished double majors for all students who have not already declared them. I feel this is grossly unfair to students to sacrifice their academic opportunities in order to meet enrollment quotas. I support immediate restoration of double majors.

It is vital for students to prevent the firing of popular young lecturers and coaches like Sherman Button and Robert Brandts. To this end I will work toward student representation on the Tenure Review Committees. I support student representation also on the Chancellor Search and Selection Committees as well as the myriad of other committees which affect the quality of our academic life on this campus.

I also support relaxation of General Education Requirements to reflect the more student-oriented policies of UCLA, Berkeley and Santa Cruz. Subject A is a rip off of student money for which they receive no credit. Subject A fees must be abolished and credit must be given for units completed.

Passage of the Equal Rights Amendment and funding of women's sports are essential to upgrading and maintaining equal status for women in the University and the community. I support both of these measures.

Lowered expectations of government should not damage existing financial aid programs that allow all students access to the University. I support maintenance of existing levels of financial aid with increases for the cost of living. Work study opportunities are presently



inadequate and need to be augmented.

A great deal of discontent has arisen in the past over the course and conduct of the A.S. Concerts and Lectures programs. I suggest more relevant, dynamic and diversified leadership and control.

Those who live in the on-campus dormitories, as I do, are probably upset at the significant increases in rent there. An investigation into these increases is long overdue and one which I plan to undertake.

Rent increases are no secret to Isla Vistas either. But little has been done to counteract the sometimes unannounced increases. Therefore, I endorse the efforts of the Isla Vista Tenants Union.

If you support the above-mentioned issues, either in part or whole, please look for my name on the ballot and VOTE: ALICE VALDIVIA, Rep-At-Large.

### ENDORSEMENTS

Martha Menchaca, A.S. Off-Campus  
Jovita Valdez, A.S. Off-Campus Rep. 1975  
Greg Boyer, UCSB Water Polo Team

# Deborah Dent

As a female candidate, I find the great lack of representation of women faculty at UCSB to be a major example of sex bias that must be corrected as soon as possible. For example, 91 per cent of the top administrators at UCSB are men, while only 6 per cent of the tenured faculty are women. There is also no academic program in women's studies. Since women make up at least half of the undergraduate population at UCSB, I feel that the reasons for this gross underrepresentation of women at UCSB should be eliminated at once. If elected as

(Continued on p. 8, col. 1)



# Emily Roth

Increased active student participation in University decision making policies is essential. The administration's arbitrary policy-making process is screwing the student. To cut enrollment it has been decided that double major policy will no longer be allowed at UCSB. No student poll nor opinion was taken by the Administration concerning the dropping of the double major policy, the decision was declared without consulting the people it affects, the students. The student must be more involved in the decisions effecting their education, more aware of the Administration's decisions authorizing student affairs. I feel that the reinstatement of the double major is a policy that A.S. Leg. Council could



pressure the Administration into accepting. Backed by student support, the council would be able to demand the  
(Continued on p. 8, col. 3)

## Dent. . .

(From p. 7)

your representative, this is one of many issues I will work towards dealing with as a responsive Leg Council member.

A.S. Legislative Council in the past year has failed to exhibit adequate representation of students, and as a consequence, student input into important educational decisions that affect us is at an all-time low. As a candidate for Rep-at-Large, I have investigated important issues which will affect all of us. It is therefore important that we work together in dealing with these issues. There are many things that we can do! Some other major areas that I will work in if elected as your representative are:

- an immediate re-instatement of the double major for students. The administrative decision to eliminate the double major was arbitrary and was done without any student input whatsoever!

- student membership on the committee to select the next Chancellor of UCSB. Presently, there is no student representation on this important committee;

- in the last six months, we have witnessed several superb instructors axed from the tenure rosters — professors such as Brandts, Button, MacDonald and Chavarria. Why? Not a SINGLE STUDENT was given input into these crucial decisions. Therefore, as a first step, I propose that we work towards getting student members with FULL voting rights on the tenure process and all

(Continued on p. 12, col. 2)

## Roth. . .

(From p. 7)

right of the students at UCSB to choose their direction of higher education without Administration restraints.

I also believe and will work for increased participation and vote on decisions regarding teaching faculty on campus. Tenure decisions should include a student vote, a vote from the people who are taught by the Professor. Also, I would like to see a policy of student selection of visiting Professors to the University. A policy in which A.S. Leg. Council would select and bring before the student body a choice of Professors that would instruct a variety of courses at UCSB. The students in turn would decide by a vote on the Professors to come teach

at the University.

I am also in support of the Isla Vista Tenants Union and feel a thorough investigation of dormitory rent increases is warranted. Also, financial aid funds should be increased to keep pace with the rise in the cost of living.

In running for Representative at Large I hope to be able to make changes in the University process that will enable the student to decide the future of his/her education. Through working with the members of Leg. council I hope to initiate change in the running of student affairs, bring it back to the students, taking the decision making policies about our education away from the administration.

Endorsed by a cross-section of humanity.

## Seth Freeman

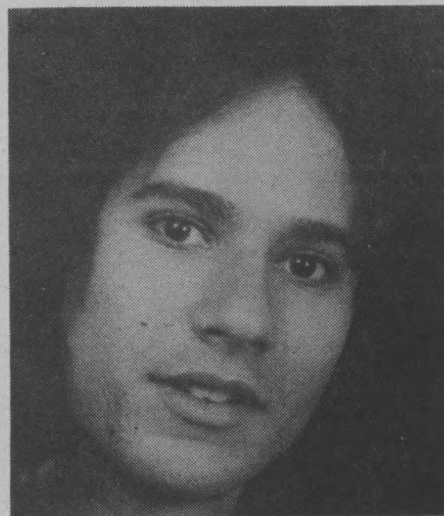
My truly limited experience on Leg. Council has allowed me to see many of the problems and sentiments that are common on this campus and the adjacent community of Isla Vista. There is no wonder why a large proportion of students are generally disinterested in A.S. Government. There is really no means of communication between a constituency and its representatives. One means of increasing communication would be to have a Rep's Newsletter and several survey/question each quarter. Hopefully this would improve student satisfaction when Leg. Council spends student funds which exceed \$500,000.

I have been the most active member of the Committee to Investigate Student Surveillance. It has been a most enlightening experience. I have seen documents (which are now public) that clearly demonstrate Administrative complicity with police officials at all levels: Local, State and Federal. Activities such as spying on students seriously interferes with academic and constitutional freedoms — the new Leg. Council should actively denounce and

curtail such police activities.

At the April 14 meeting of Council, the Chairman of Finance Board announced that all budget requests for next year could be covered if there were no locked in or precommitted expenditures. One step in eliminating some of these locked in funds is passage of the new constitution. We are one of the few institutions that supports programs such as Athletics, EOP, Alumni and several more, through student money. The interests of the students could be better served if these programs were supported through Reg Fees. I support all action that will accomplish a phase out of student expenditures in these areas — and let them be funded administratively.

Enrollment and Housing are interrelated problems that must be resolved. I do not support the recent announcement by Letters and Sciences that will sharply limit our career objectives, by dictating the maximum number of units and discouraging double majors. Instead I support an earlier admission cut off date. With enrollment



at a lower level, the housing crunch both on campus and in Isla Vista could be controlled. I strongly support a student funded Housing Co-op. Providing good housing at a reasonable rate can easily happen with such a cooperative.

Are you pissed off about having to pay \$16 a year for a P.O. Box? I strongly propose kicking the postal service out of the UCen and replacing it with a student run office. Many other institutions have student post offices which not only run smoothly, but also employ large numbers

of students part-time. I also propose a student owned and operated food service to deal with the vending machines on campus. Currently, a company named Servomation has a monopoly on this campus. Modeled after the food service at UCLA, I am sure that we can improve the service and additionally employ more students. I feel that all auxiliary services of the University should be staffed by students including Parking, landscaping, and library services.

In general, the new Legislative Council must be prepared to assert itself. There should be student participation in all Academic and Administrative decisions. The council must act as a negotiating body representing the students to the Administration. The Council must actively seek student input, and put it to use. On the new council, I will provide for the best interests of all groups — and not alienate any individual or group.

I perceive my role as Representative At Large as one of representation and not one of making value judgements. I can only promise that I'll make myself as accessible and responsive as possible. If I screw up, approach me. I am here to serve you, not shit on you. I can be reached at 968-9329, anytime — Please vote.



## Tom Alberts

in "Budget Sessions". The task requires an understanding of the needs of the entire university community, both on an individual and group basis. I feel qualified to act as your representative for the satisfaction of these needs.

Some of my present interests are the establishment of an escort service and "whistle stop"; both are aimed at assault and rape prevention; both are projected to be functioning in late spring or early fall of next year.

Over the past two quarters, as a member of the A.S. Constitution and By-Laws Committee, I have been involved in the rewriting of the A.S. Constitution. This document will be on the ballot and was approved unanimously by the present Leg. Council; vote for the new constitution, as a forward step for student government.

In the future I plan to work with the student lobby to establish a beer pub on campus.

If you have any questions or comments call me at home (968-5823) or stop by my office in the UCEN 3175. I'm there Tuesdays and Thursdays from 11 to 1.

Please give me the chance to work for you by voting on April 20th or 21st; for the last name on the ballot: for Representative at Large.

Thank You,  
Tom Alberts  
Endorsed By:

Dana King - Administrative Vice President  
Dave Gooding - Finance Board Chairman  
Wendy Watanabe - Off Campus Rep.  
Steve Smith - A.S. Constitution and By-Laws Committee Chairman  
Tracy St. Johns - Rep. at Large

**Alan Yamamoto**

**Has Withdrawn**

**His Candidacy**

As a member of the current Legislative Council, I have gained the knowledge and experience to function affectively on next years council. Over \$200,000 in A.S. fees, that you pay, will be allocated this Spring. This will be done by Leg. Council

# Off Campus Representative

## Dallas Riley

The A.S. legislative council was created to foster the educational experience of students. In performing its duty, the council is funded \$16.25 quarterly of student monies. Because of the reasons mentioned above, the A.S. legislative council must in every facet of its operation be accountable to students. And, we as students, must take on the

responsibility that this accountability take precedence in all of A.S.'s dealings. There are numerous issues going on within the university which affect students' lives, and we have the right to be involved in the decision making. The elimination of the double major was an administration decision that reflects the absence of student input. Next year, (fall 77) there will be a new chancellor providing leadership for the campus. Because he or she will be the head of all

(Continued on p. 9, col. 1)

## Ann D. Davis

We are in the midst of a period of growing awareness and of conflict. Only a unity of the different individuals and groups working for social and political change can provide us the strength to bring about any lasting reform. Student participation in the decisions that effect our lives, on campus and across the country, is essential. A.S. Government

must work to promote this unity and awareness and to generate student interest and involvement in these decisions.

Committees which affect the policies and programs of this campus must have student membership, with full voting rights for the student member. This includes, for example, the Chancellor selection committee and the Tenure Review committee. I support the

(Continued on p. 9, col. 3)

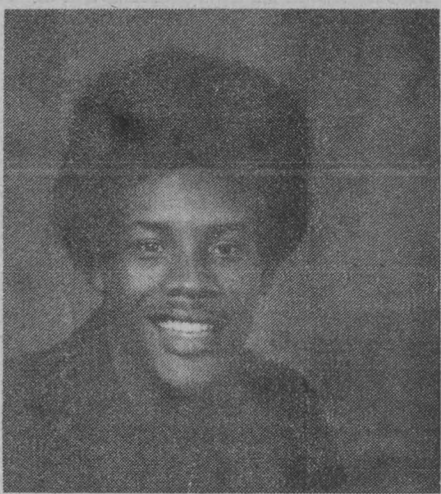
## Riley...

(From p. 8)

segments of the campus population, it's only fair that at some stage, all segments of the campus population be included in the selection process.

The increasing cost of rents from year to year has become one of the things students can look forward to when coming back to school in the fall. There must be steps taken to insure some compatibility of prices and quality of housing in Isla Vista. I am in full support of A.S. council working with Isla Vista tenants Union in curtailing continual increments in rents.

As long as people attempt to live together in a civilized manner, conflicts will arise, and for any progress to materialize, compromise will have to come about. If chosen as an A.S. representative, I hope to play a significant part in the many issues and comprises affecting students academic and social lives on this



campus. As one person, I realize my limitations, but students working together as an aggregate body, I foresee no

limitations to the things that can be accomplished in improving the situation of students today and tomorrow. So, please give me the opportunity to serve you. Vote April 20 and 21.

## Davis...

(From p. 8)

establishment of a student committee to work on choosing, and bringing to campus, visiting Professors who will offer us a wider range of classes from which to select.

Arbitrary policy changes, such as the mid-quarter end to double majors, are not the solution to the increasing enrollment problem and must be opposed. The University should set and keep enrollment limits. A.S. and Studnet Lobby must fight to keep absentee landlords and rental companies from instituting such drastic rent increases.

A.S. must strive for a greater cultural, social and political diversity in the selection of lectures and concerts. Current and relevant issues, such as the Nuclear Safeguard Initiative or the Equal Rights Amendment (both of which I strongly support), must be given priority as lecture topics. The choice of concerts should reflect the broad cultural and ethnic background of students on campus.

I support the expansion of Black and Chicano Studies curriculum and will work for the creation of a Women's Studies department and major for UCSB. Our faculty, including Tenure positions, must reflect a proportional representation of women, especially minority women.



Current women's sports programs should be expanded to equal the sports programs offered men. I support the initiating of free gynecological care and council at the Student Health Center.

A.S. Leg Council should be calling for an immediate halt to any administration "spying" on students and student groups. These procedures, along with the accumulation of files, are infringing on our rights as individuals and as citizens. All files on students and groups should be opened and NOT released to outside intelligence gathering agencies or the local police.

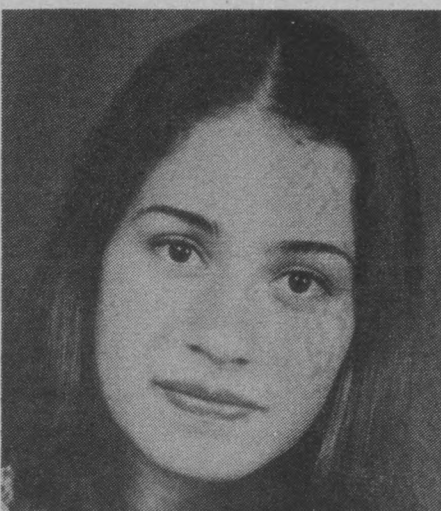
Increased concern about the issues that (Continued on p. 12, col. 1)

## Arlene Lozano

As a candidate seeking the position of Off-Campus Representative I feel an obligation to question the quality of current student representation. Each year elections occur and issues are presented and student involvement is greedily sought. This sincere desire to seek student participation should not merely be limited to one specific point in time. Student participation involving issues, action, and progress should be a continuous process. I should like to think that a candidate's sincere concern toward solving student problems at UCSB would not end regardless of one's election to office.

How can we as students in a bureaucrat institution move forward in the areas of academic affairs, deterring sex discrimination in womens athletics, seeking adequate housing during a time high priced shortages prevail. Can we, as students, halt surveillance before developing an institutionalized Big Brother? The students on this campus can have an positive effect in these areas, if only they were allowed to become aware of their potential. I want to seek out this potential whether elected or not.

As a woman I also feel the need to correct the gross inequality in the representation of women at the administrative level. 90 per cent of the high ranking administrators are men while only 6 per cent of the tenured faculty are women. I would seek to create a women's studies program where presently none exists to reflect the women at the under graduate level who make up at least half the population. I also find it necessary to remedy the lack of properly located and



scheduled child-care centers within the university's geographical domain. These child-care centers would allow many women to further their education at the university level where presently they are prohibited.

Presently students have no meaningful decision making capabilities effecting academic affairs. I want to instate student membership on tenure review committees. Students should have a decision in the selection of visiting professors, at the moment students are excluded. I would like to seek studnet support to reinstate the double major; another area of student exclusion. Student representation on all administrative committees which affect the quality of academic life on this campus is what I wish to work toward. There are many more issues to confront which should be enumerated regardless of my election.

- Support Ratification of E.R.A.
- Support Isla Vista Tenants Union.
- Expansion of women's sports programs to equal mens.

## Mark Hertel

As students of the University of California, it is obvious that we are involved with an educational institution that has access to widespread power and resources. It is surprising that, as students, our administration and student government are not more responsive in fulfilling our needs, in view of the fact that without us, this system would not exist.

We have not seen the effective use of these resources in meeting our needs as a whole. This situation is basically due to special-interest group domination within our legislative body. This domination has resulted in a shift in the focus of attention from the issues relevant to the majority, to those of the minority. Indifference and lack of participation of the majority is the outcome. If there is no move to displace them for representatives of the entire student body, this situation will continue. This is not to say that I advocate ignoring the needs of special-interest groups; rather, I want them incorporated with those of the entire student body.

There are many issues of academic and community importance that require immediate action. Their resolution will affect a vast number of people, and each must be given thorough attention: Limit enrollment to improve the TA/student ratio and to halt overcrowding of our

campus and community, Student involvement in administrative affairs directly affecting students, Equal funding for women's athletics, Increased funding for intercollegiate and intramural sports, Diversity in A.S. concerts and lectures,

**This candidate did not submit a photograph of himself.**

Student participation in tenure decisions and policy making, Development of safe and efficient bikepaths and walkways, Full credit for Subject A and elimination of fees, No Reg fee increases, Additional student parking facilities, Implementation of a beer pub on campus, A wider variety of extension courses and workshops with emphasis on educational, vocational, and mechanical skills.

I am anxious to see the realization of as many of these goals as possible. The major objective at hand is to elect a student legislature that will respond actively to the issues relevant to our entire student body. There are limitations, however, as to how much an A.S. representative can accomplish without support or involvement from students. A vote is an indication of concern and support. That, in itself, is participation, and is of paramount importance. A vote is a declaration of the need for improvement, and is the simplest form of involvement to be found.

## Steven Ashby

My opponents in this election are running on such so-called issues as more concerts, lower rents in I.V., and lower book store prices. I agree with these ideas. Everyone agrees with them. They aren't real issues. My campaign differs from others in that I feel there are larger, more important issues that are being ignored by everyone else running.

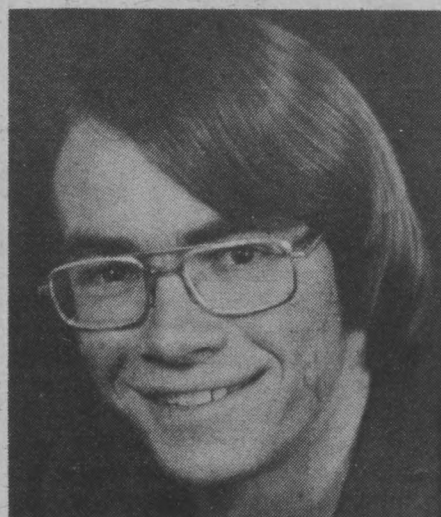
For example, what difference does it make how many concerts there are if your financial aid is cutback so that you can't afford to go to school? Lower book store prices are important, but become irrelevant to a parent who, because there is no free 24 hour child care center, can't attend college at all.

Democrats and Republicans alike are now telling us that Americans have come to "expect too much." They say that we

must "tighten our belts." What they mean when they talk of their new "austerity program" is that workers and students are going to have to pay for the present economic crisis. What they're talking about is cutbacks.

Financial aids and EOP are already under heavy attack. Minority programs are seriously threatened. Our classes are large now, but they'll get larger as faculty is reduced. There is much talk of increasing tuition, which only a few years ago used to be free.

There is a program under way to limit enrollment, to cut back the number of students that are "allowed" to go to school. These cutbacks hit hardest at minority students. The Young Socialist Candidates, whose slate I am running on, believe that education is a right, not a



privilege for the elite few. Everyone has the right to go to college.

The Young Socialist candidates believe that not only should there be no cutbacks, but that present programs

should be expanded, and new ones added.

We would use the resources of A.S. Gov't to organize students to fight for their rights. We would organize to:

- Oppose cutbacks in Financial Aids and EOP.
- Oppose cutbacks in Minority Programs and enrollment.
- Establish a free 24 hour child care center on campus.
- Establish free gynecology care at the Student Health Center.
- Implement Women, Asian-American and Native American studies programs.
- Demand Preferential hiring of Women and Minority faculty members.

I urge you to vote Young Socialist. Vote Steven Ashby for Off-Campus Rep., Eileen Walsh for External President, Paddy Nash for Executive V.P., Gary Putnam for Rep at Large, and the irrepressible Marc Wutschke for Off Campus/Rep.

# Mark Wutschke

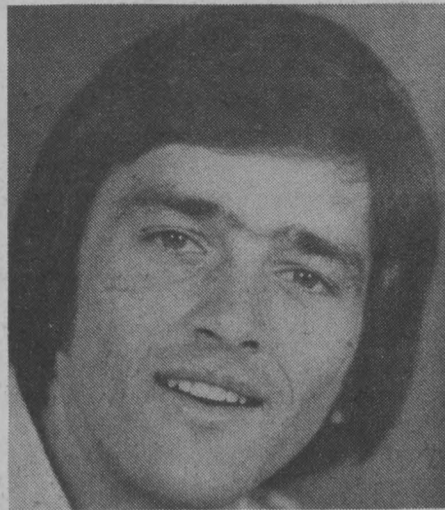
As a Young Socialist candidate I am approaching this election somewhat differently than other candidates. Most of the other candidates emphasize non issues, things everyone agrees on and supports, such as concerts, intramurals, beer, more student input and communication, etc.

The Young Socialist candidates, in contrast, feel that students should have control over the policies of the University. Thus, we discuss and offer solutions to the crucial problems at UCSB. Our campaign is the only one that addresses itself to such issues as sex discrimination on campus, cutbacks in educational and minority programs, financial aid and E.O.P.; the surveillance of students by the Administration, and the support of labor struggles on campus and in the community. Due to lack of

space here, I cannot go into all these issues. For a more complete view of the YS program I recommend also reading the statements of the other YS candidates, Gary Putnam, Rep At Large, Steve Ashby, Off Campus Rep., Paddy Nash, Exec. V.P. and Eileen Walsh, External President.

I wish to discuss in particular the surveillance of student activists by the Administration. This hits close to home, as I am on the Administration's enemies list, one of eight students targeted for specific surveillance according to legal testimony in a court deposition by the Administrative official who was the conduit of this information.

This surveillance is a result of my activities on campus. I have been active in helping to organize the mass demonstrations against the attempts of



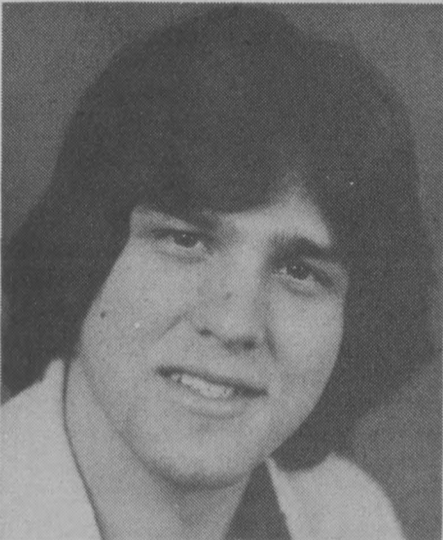
the Administration to cut E.O.P. and Financial Aids, and the Black and Chicano Research Units. I have also organized Forums and meetings bringing a variety of speakers on campus, and have been an outspoken critic of UCSB Administrative policies. These activities

were well within my Democratic and Political rights.

The Surveillance of students by the Administration is totally unjustified. It is a threat to the rights of all students who wish to exercise their Democratic and Political rights without fear of being snooped on or harassed.

The YS candidates call for an immediate investigation of this activity. We want all files of the Administration open to public inspection. We demand and end to this anti-democratic activity and the end of the complicity with other police agencies, including the FBI.

This activity is indicative of the problem that the University is controlled by the wrong people. I will continue my activities against anti Democratic activities and policies of the Administration. I seek A.S. office to use its resources to educate and organize a greater number of students to exercise their collective power.



# John Anthony Chavez

member of the Legislative Council, but that I have the independence to truly represent the students residing off-campus. I have long been involved in school government prior to transferring here. I have worked primarily for the Student Lobby while at UCSB and I was coordinator of the recent Symposium on Housing. Since I am not associated with the special-interest groups, I can represent the interests of the students as a whole.

Thus, if elected, I will work to accomplish the following goals:

**MAXIMIZE TANGIBLE BENEFITS.** I believe in maintaining and expanding the present A.S. - supported programs which directly benefit students, i.e., the A.S. Bike Shop, A.S. Concerts and the Intramural Program.

**INCREASE RESPONSIBILITY IN**

**APPROPRIATIONS.** The funds of A.S. Government should be appropriated to reflect the interests of the student body as a whole rather than just special interests. While acknowledging the need of A.S. support for some interest groups, it is necessary to keep that monetary support in proportion to the size of the students served by that interest and the student body as a whole.

**INSURE PROPER UTILIZATION OF STUDENT FEES.** Student fees should be used in the interest of the students as a whole. It is not a question, for example, that the Alumni Association should be supported, but of whether or not registration fees should be used for such a purpose.

**EXPAND STUDENT REPRESENTATION IN THE**

UNIVERSITY. I plan on working to improve as well as expand the channels for student input through policy committees.

**INCREASE STUDENT ROLE IN ACADEMIC AFFAIRS.** I would enjoy working with the Academic Affairs Board in attempting to increase the student role. Increasing the utilization of student evaluations and even actual student representation in the tenure process and the selection of a new Chamcellor are goals to work for.

**ELIMINATION OF THE SUBJECT A FEE AND THE GRANTING OF UNIT CREDIT.**

**ENDORSEMENTS:** Dana King, Admin. V.P., Dave Gooding, Finance Board Chmn.; Wendy Watanabe, Off-Campus Rep., Tom Alberts, Rep. at Large.

**THANK YOU FOR YOUR SUPPORT!**  
- J. Anthony Chavez -

# Dixon Oriola

I am running for the position of Off Campus Representative. I am determined to see the A.S. Legislative Council direct itself to the problems concerning EVERY student on this campus. This University's student population comes from a broad cross-section of people, and therefore the need arises for equal attention to student issues and problems.

If all of the problems that we encounter cannot be eliminated, we should do our best to minimize them. I would definitely support and endorse any efforts to bring about this task. I most certainly support increased student input into administrative decision making policies. Every student, I'm sure, enjoys some form of recreation to get away from the academic pressures. I will therefore support the volleyball/polo groups, intramurals, and Isla Vista Community projects.

I think that these are legitimate student concerns. As your Off Campus Representative, my number one priority will be to serve as an advocate of STUDENT NEEDS. Some of the projects and issues that I will work for and support are:

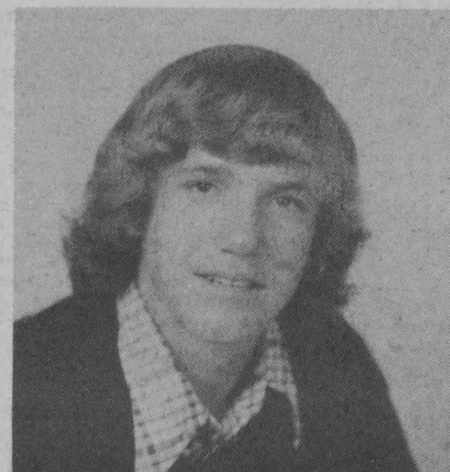
- Increased parking facilities for off campus students.
- Support of the Isla Vista Tenants Union contract and no rent increases.
- Reduction of administrative fines for petitions, late Reg Fees, library fines, etc.
- Expansion of financial aids to compensate for rising costs affecting student budgets.
- Revise price schedule for books and supplies in the UCen Bookstore.

Student government belongs to the students that is the reason for my candidacy. If you support my platform in



whole or in part, I urge you to go to the polls and cast a vote for me, Dixon Oriola, on April 20 or 21. Thank you.

# RHA



Greg Boyer

# Summary of Constitution

## ELIGIBILITY FOR HOLDING OFFICE

Undergraduate students who carry 6 or more units shall be eligible to hold office. (The present Constitution requires that a student carry at least 12 units in order to be eligible to run and hold office).

## LEG COUNCIL MEMBERS

There shall be only 1 President. There shall be only 2 RHA Reps, 3 Off-Campus Reps, and 5 Reps-at-Large. (Presently we have 2 Presidents, 3 RHA Reps, 6 Off-Campus, and 4 Reps-at-Large).

## THE VICE PRESIDENT FOR INTERNAL AFFAIRS

Shall be the Chair of Legislative Council. (Presently the Presidents chair the meetings).

## A.S. PERSONNEL ADVISORY COMMITTEE

This is brand new. This committee will include both students and A.S. Staff

employees. It will be responsible for selecting new A.S. Staff members. It will be responsible for hearing student grievances about any A.S. staff employee. It will recommend goals and objectives for the Executive Director and A.S. Employees.

## JUDICIAL COUNCIL

Judicial Council has been granted the new power of injunction. It may prohibit any actions by the Leg Council or its members that are found to be in violation of the Constitution or its By-laws.

## ELECTIONS

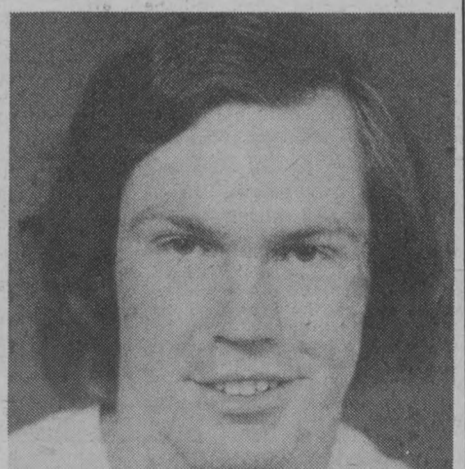
The General Election will take place during the Winter Quarter. (Presently the election of officers occurs in the Spring Quarter.)

## INITIATIVE, REFERENDUM, AND RECALL

A voter turn-out of only 20% will be required to ratify these ballot measures. (Presently it takes a turn-out of 25% for passage).



Aaron Chaney



Don Heinsohn



# Constitution Continued

term of office shall be indefinite. Conditions of continual employment shall be subject to University policy.

b. The A.S. Personnel Advisory Committee, at the end of the committee's term of office, shall prepare an annual confidential performance evaluation of the Executive Director based on the previous year's goals and objectives which will be submitted to the Vice Chancellor, Student Affairs, and the Associated Students Legislative Council.

Section 2. DUTIES AND FUNCTIONS: The Executive Director shall:

a. Be the official representative of the Associated Students in all of its business and financial matters and shall be responsible for the efficient and proper conduct of all matters pertaining to his office.

b. Keep a suitable system of public accounts, records and books of the Associated Students and its various activities. All of the accounts of the Associated Students shall be kept in a standard form so that a statement of the Associated Students' financial status may be drawn up any time.

c. Present to the Legislative Council a complete annual audit by a Certified Public Accountant for the preceding year.

d. Supervise the receipt, allocation and expenditure of all monies of the Associated Students.

e. Have the authority to borrow money in the name of the Associated Students with the approval of the Legislative Council.

f. Be responsible for the appointment and termination of all Associated Students employees under procedures of the University of California, Santa Barbara Personnel Policies and as outlined in the By-laws applicable to Article VI, Section 5.

g. Supervise the budget and

activities of all employees and services.

h. Act as a trustee in maintaining custodial accounts for various campus organizations.

Section 3. CONTRACTS: The Executive Director shall sign all contracts entered in the name of the Associated Students as authorized by the Legislative Council.

Section 4. EMERGENCY REPLACEMENT: In case of emergency, a temporary or acting Executive Director may be appointed by the Vice Chancellor, Student Affairs upon approval of the Legislative Council. The temporary Executive Director shall serve until the Incumbent Executive Director returns or a new one is selected.

Section 5. DEPOSITS: The monies of the Associated Students shall be kept on deposit in a Bank and drawn out only by checks signed by the Executive Director. A designee of the Vice Chancellor, Student Affairs may be authorized by the Legislative Council to sign checks in the case of an emergency created by the prolonged absence of the Executive Director.

## ARTICLE IX - ELECTIONS

Section 1. VOTING PRIVILEGES: All members of the Associated Student Body shall be entitled to vote at any election of the Association for which they are qualified, according to the provisions of this Constitution.

Section 2. TIME OF ELECTIONS: General elections of the Associated Students shall be completed by the fifth week of the Winter Quarter. Special elections shall be called by a majority of the voting membership of the Legislative Council as necessitated by business of the Associated Students. A special election shall be held to fill an elective office when at least fifteen (15) school weeks remain

in the term of the vacated office.

## Section 3. ELECTION PROCEDURES:

a. All elections shall be by secret ballot.

b. All executive officers shall be elected by a simple majority vote. All representatives shall be elected by a plurality vote.

c. The President, the Vice-Presidents, and the Representatives-At-Large shall be elected by vote of the Associated Students membership.

d. Unit representatives (Residence Halls Association and Off Campus Representatives) shall be elected by vote of only those students affiliated with the respective unit.

e. In run-off elections, writing-in of candidates shall be prohibited.

f. All additional election procedures and regulations, and the functions of the Elections Committee, shall be stated in the By-Laws.

## ARTICLE X - INITIATIVE, REFERENDUM AND RECALL

### Section 1. INITIATIVE:

a. The Associated Students shall have the power to initiate legislation by means of a petition signed by ten (10) percent of its members. An election shall be held within five (5) school weeks after the petition has been presented to and certified by the Elections Committee.

b. Special election procedures shall be followed. For each specific initiative, a majority vote and at least a twenty (20%) turnout of the Associated Students Membership shall be necessary for adoption.

c. Legislation adopted in the above manner shall not be changed in any way for at least one quarter.

### Section 2. REFERENDUM:

a. Any legislation passed by the Legislative Council may be subjected to a referendum vote of the

Associated Students. Upon presentation to the Elections Committee Chairperson of a petition signed by ten per cent (10%) of the Associated Students, the Legislative Council shall repeal such legislation or submit same to a vote of the Associated Students within five (5) school weeks.

b. Special election procedures shall be followed. For each specific referendum, a majority vote and at least a twenty percent (20%) turnout of the Associated Students Membership shall be necessary for repeal.

c. Legislation repealed in the above manner shall not be adopted again for at least one quarter.

### Section 3. RECALL:

a. Officers of the Associated Students shall be subject to recall by presentation to the Elections Committee Chairperson of a petition signed by ten percent (10%) of the Associated Students eligible to vote for the specified officer. Within five (5) school weeks a recall election shall be held.

b. Special election procedures shall be followed. An elected officer shall be immediately recalled upon a two-thirds (2/3) majority vote with at least twenty per cent (20%) of the officer's constituency voting.

c. If a recall election should fail, the specified officer shall not be subject to recall again for at least one quarter.

## ARTICLE XI - AMENDMENTS

Section 1. All amendments to this constitution may be proposed in either of the following manners:

a. Upon consent of two-thirds (2/3) majority of the entire voting membership of the Legislative Council (9).

b. By a petition signed by at least fifteen per cent (15%) of the Associated Students membership,

presented to the Elections Committee Chairperson at least one (1) week before formal presentation to the Legislative Council.

Section 2. An election shall be held within five (5) school weeks after either (a) or (b) of Section 1 has been fulfilled. The Legislative Council shall arrange for proper publicity which shall include a full text published in the Nexus at least one week before the election. Full texts shall also be available at the polls.

Section 3. For each specific non-fee related amendment at least a two-thirds (2/3) vote in favor and at least a twenty per cent (20%) turnout of the Associated Student membership shall be required for adoption.

Section 4. Pursuant to University policy, the Chancellor shall set the percentage voter turnout requirement for fee related amendments. A two-thirds (2/3) vote approval of that turnout shall be required in order to request an Associated Students membership fee change.

Section 5. Special election procedures shall be followed.

## ARTICLE XII - BY-LAWS

Section 1. The By-laws of the Associated Students shall be established by a three-fourths (3/4) majority of the entire voting membership of the Legislative Council (10).

## ARTICLE XIII - ENABLING CLAUSE

Section 1. Upon ratification, this Constitution shall go into effect for the purpose of election of officers in Winter 1977 and in all other aspects following that election.

## Pomeroy . . . Landow . . .

(From p. 5)

DEPARTMENT OPPORTUNITY ADVISORS should be established to continuously keep the students abreast of the present and future career opportunities in their field.

I will fight for the old causes as well, abolishment of Subject A fees, carefully limited enrollment, and others, but I want to bring in these new ideas as well as others to work for the Associated Students. My experience includes being a Legislative Council representative-at-large, being a Community Affairs Board volunteer, surveying for the Housing Evaluation Report, and as a member of Leg. Council, amending and ratifying the new ASUCSB Constitution. I am the only candidate in the external presidents race that has had the experience of sitting on Council, experience that I consider to be essential to the office of external president. Similarly, I feel that my record speaks for itself. I proposed the A.S. Chaperon Service, worked on improving MTD bus service to outer I.V., proposed an investigative body on student privacy, and established the A.S. government orientation program.

Let me remind you that each of you pay \$48.75 every year in Associated Students fees. There is a tremendous potential for A.S. to do something for you, but naturally it takes leadership. If you like what I am saying, give me a chance to put these ideas into action; I need your support. Take your reg. card and vote Tuesday or Wednesday. It will make a difference.

## Davis . . .

(From p. 9)

surround our lives will only come to more people when government, both student and national, is made more relenant, more responsive to people's needs, and more innovative. It is static people in office that is a major cause for the apathy so many feel. I think A.S. Government can, and must be changed to work on achieving these goals.

(From p. 5)

being retroactive, with all students taking or having taken the class, getting unit credit.

My final concern centers around our sports program. When our Volleyball team played U.C.L.A., we filled the gym. It's obvious that we support the team, so why is it so underfunded? The same holds true with other sports like Waterpolo and Baseball.

I doubt seriously my concerns will exceed anyone else's by far. What I offer is the initiative and drive to change concerns into action. ELECT SCOTT LANDOW EXECUTIVE VICE PRESIDENT.

## Nash . . .

(From p. 6)

ratification of the E.R.A. and support of the campus E.R.A. Coalition.

In addition we will fight for expansion of mority programs and minority control of those programs, full representation of oppressed nationalities in the faculty, staff and student population. We oppose cutbacks of financial aid, and the decrease of E.O.P. student slots. Education is our right. Further, we demand an end to the surveillance of political activists on campus and opening all the files kept on individuals and groups. The Y.S. candidates support the workers on campus and in the community.

Vote Young Socialist. Paddy Nash for exec. v.p., Eileen Walsh for ext. pres., Gary Putnam for rep-at-large and Steven Ashby and Marc Wutschke for off-campus reps.

## Dent . . .

(From p. 8)

committees which affect the quality of academic life on this campus;

- active support of the Isla Vista Tenants Union;
- greater diversity in the A.S. Concerts and lectures program;

• and strong support for ratification of the Equal Rights Amendment, which would officially guarantee women equal rights. Hopefully, this would be a major step towards obtaining more tenured women faculty at UCSB.

This year A.S. Leg Council must make a strong effort to ensure a true

democratic student government. This starts by your voting for those who are qualified and sensitive to the needs of students. I feel that I have prepared myself for the position of Rep-at-Large and this is why I am asking for your vote April 20 or April 21. Thank you for taking the time to read this.

# Polling Places

UCen (Two Booths)

Library

Phelps-Ellison Quad

Science Courtyard

Pardall Tunnel

Ortega Commons

Carrillo Commons

Vote Tuesday

Or Wednesday