

THE EAGLE

VOL. 4

SANTA BARBARA, CALIFORNIA, FRIDAY, MAY 15, 1925

NO. 32

Men's Glee Club Will Present Concert at Lobero Wed.

Program Consists of Sixteen Numbers

Sixteen numbers comprise the program which will be presented by the Men's Glee Club at the Lobero Theater next Wednesday evening at 8:30. The annual home concert program consists of glee club songs, vocal and instrumental solos, and quartet selections. A soprano solo by Mrs. Barnett is a special feature of the program.

Since the Men's Glee Club has brought honor to the College as well as recognition of the institution throughout the State, a large crowd is expected to attend the concert. Tickets may be obtained from any Glee Club member.

Following is the program:

1. Jolly Fellows—Herbert.
2. Piano Duett—William Harts-horn, Everett Hartwell.
3. Drakes' Drum—Glee Club.
4. Cornet Solo—"My Heart at Thy Sweet Voice," Saint Saens—Harold Clodfelter.
5. Idylle Mongoliene—Steven-son—Glee Club.
6. Tenor Solo—"The Barefoot Trail"—Richard Proud.
7. a. Lindy Loo—Strickland. b. Keep Ago'in—Glee Club.
8. Baritone Solo—"Prologue from Pagiacci"—Leoneavallo Monroe Langlow.
9. Violin Solo—"Old Favorites"—Francis David.
10. The Lost Chord—Sullivan—Glee Club.
11. Soprano Solo—"Aria from Tosca"—Puccini—Mrs. Helen M. Barnett.
12. Monologue—"Rube's Family"—Ralph DeBolt.
13. Love's Old Sweet Song—Mallory—Glee Club.
14. Quartet, "Strains from Ita-ly"—Richard Proud, Lewis Peters, Carl Wirths, Carroll Dawley.
15. Russian Dance—Rollo Ell-iott.
16. College Songs—"Our Colle-ge Grand"—Frances Jones, '25. "The Green and White"—Glee Club.

Calendar of Events

- Monday, May 18—Forum. Li-brary, 7:30 P. M.
- Tuesday, May 19—Assembly, 11:00.
- Wednesday, May 20—Annual Glee Club Concert. Lobero Thea-ter 8:30 P. M.
- Thursday, May 21—Student Body Meeting. Letters Awarded.
- Friday, May 22—Barn dance at Goleta beanery.
- Saturday, May 23—Tea Dansant 3 to 6 P. M. in Cafeteria. Gym. Exhibition 7:30 to 9:30 P. M.

Political Battle On Campus Claims Attention of Students Competition Running High

O'REILLY AND KEIM IN RACE FOR PRESIDENCY

Political fury which is running high on the campus will culminate in an election next Friday. Petitions for nominations have been in cir-culation and upon the bulletin board the entire week. In order to be-come a candidate for any office the petition of the candidate must con-tain the signatures of 10 per cent of the Student Body membership. Since petitions will be taken down today, students are urged to sign up.

Although several students have withdrawn their names from the campaign, all offices but two are closely contested. Two students, Allen Keim and Edmund O'Reilly, are in the race for president. Helen Culp and Jessica Lemmon are running for the vice-presidency. Ruth Garner and Mildred Sample have been put up for the position of sec-retary. Two candidates, Francis O'Reilly and Lewis Peters are the only contestants for the treasureship.

Everett Hartwell is the sole nominee for the editorship of La Cumbre. Edwina Kenny and Sidney Doner are the two contestants for the editorship of the Eagle. Warren Atwood and Max Weide are in the race for the office of advertising manager. The office of oratory, debating, and dramatics is being sought by Roscoe McGuire and Edith Comstock.

The following election board has been appointed, Ester Janssens, chairman; Marjorie Granger, Carlyle Gorman.

Roadrunners To Play Ancient Rival, Cal Poly Tomorrow

The Roadrunners will journey north tomorrow to cross bats with their ancient rival, Cal Poly. Although a victory cannot be predict-ed, a hard fight is promised; for the Roadrunners will bear in mind the humiliating football defeat last fall at the hands of Poly Parrots. Whenever the Roadrunners meet Cal Poly, a real grudge battle en-sues.

Little else is known of the Poly baseball nine this year, but a little opposition is expected because the San Luis squad has always been noted for heavy swinging. Just how much heavy swinging will be done tomorrow remains to be seen. It is a pretty safe bet, however, that Andy will have them eating out of his hand before a few in-nings are over.

To date the Roadrunners have lost two games on the home dia-mond and won two games on south-ern diamonds. Tomorrow they play their final game on a foreign diamond which will decide the trend of the season. So far the Roadrunners have made 18 runs to their opponents' 16.

With such timber-toters as Cher-rie, Keim, Anderson, O'Reilly, and several others whom Casey has re-cently picked out, the Roadrunners need not fear to lose the game through inability at the plate. Also, with Anderson to put a crimp in Poly's batting average, the pros-pects look especially bright.

Casey intends to take a squad of about fifteen men north tomorrow including Peel, catcher; Anderson

Gymnasium Exhibition To Be Given Next Saturday

An exhibition of class work in the Physical Education Depart-ment under the direction of Miss Weage will be given Saturday eve-ning, May 23. The gymnasium exhibition which will include sev-eral classes is the first to be put on at the State College. Folk and rythm dances, stunts, apparatus work, and calisthenics will be in-cluded on the program.

Invitations for the exhibition are being sent out under the direction of Eleanore Ginno and Elsie Travis who are managing the affair. Townspeople as well as College students are invited to attend the exhibition.

Large Enrollment For Summer Term Expected

Inquiries regarding summer ses-sion are received by the office daily from former graduates who are planning to attend summer school. A large enrollment is anticipated for the summer term since many former students intend to return and a large number of regular stu-dents as well as outsiders are ex-pected to attend the summer ses-sion.

Summer bulletins have been sent out to prospective students in all parts of the State.

and Sawyers, pitcher; Williams, first base; Keim and Brotherton, second base; Breslin, short stop; Asakura and Peters, third base; Cherrie and Powell, left field; Conklin, center field; O'Reilly and Hollingsworth, right field.

College Celebrates Home Coming Day Tomorrow

"Masque of Pandora" Presented In Court

"The Masque of Pandora," by Longfellow, which has been set to music with dancing by R. B. Smith Cale, will be presented in the Col-lege court tomorrow evening as the chief feature of the evening's en-tertainment which will conclude the annual Home-coming Day pro-gram. The masque will follow the "roll of colleges" which will be called at eight o'clock. Dancing al fresco following the masque will be the last feature of the Home-com-ing Day program.

An alumni luncheon at El Paseo at noon will be the first feature of the program planned for Home-coming Day. The luncheon will be followed by a tea and reception on the gymnasium terrace in the after-noon. Dinner will be served for the alumni in the cafeteria preced-ing the evening's performance.

The complete cast as well as the production staff of "The Masque of Pandora" is printed below:

Cast of Characters in the order of their appearance:

Pandora—Madeline Connell.
Hephaestus—Maxwell Conklin.
Voice of Zeus—Francis David.
Thalia Solo—Irma Learned.
Three Graces—Janice Erwin,
Eleanore Ginno, Elizabeth Lane.
Hermes—Roscoe McGuire.
Prometheus—Monroe Langlow.

(Continued on Page 2, Col. 3)

Bulletins For 1925-26 Received By Office

Copies of the 1925-26 College bulletin were received by the office this week from the California State printing office. The bulletin con-tains an announcement of courses for 1925-26 as well as general in-formation concerning the College.

Tennis Team To Meet La Verne Men

The State College tennis team composed of Ted Ellsworth, Flip Brotherton, and Warren Atwood went south to La Verne College to play the first intercollegiate match of the year today. Ted and Flip are going to start the match with Warren in reserve.

The match will be played off in four sets of singles and one set of doubles. Although nothing is known of the prowess of the La Verne net stars, the local team should have an even chance due to its consistent practice of late under the coaching of Dr. Ellison who has taken charge of tennis in the col-lege this semester.

THE EAGLE

Owned and published weekly by the Associated Student Body,
Santa Barbara State Teachers College, Santa Barbara, California

Printed by Daily News Job Printing Department

Subscription Price\$1.50 per year
Application for second-class privilege applied for October 31, 1924 at Santa Barbara, California.

BARBARA DEWLANEY	EDITOR-IN-CHIEF
TERENCE ELLSWORTH	BUSINESS MANAGER
Sidney Doner	Assistant Editor
Edwina Kenney	Assistant Editor
Sidney Doner	Men's Sports Editor
Edith Comstock	Exchange and Alumni Editor
Madeline Klinke	Typist
Oran Booth	Advertising Manager
Lee Verret	Circulation Manager
Maxwell Conklin	Assistant Circulation Manager

ASSOCIATE EDITORS		
Elsie Travis	Lois Pearson	Barton Hopkins
Mary Virginia Platt	Elizabeth Lane	Margaret Burke
Anna Lincoln	Edith Anderson	Fred Diehl
FRANCES DREW		
ADVISORY BOARD		
Miss Winifred M. Frye		

Do Your Duty---Vote!

The fate of the Student Body will be decided next Friday when students elect officers for the coming year. This election is the biggest event of the College year since the success of next year depends upon the strength and alertness of the new council.

Upon the president rests the heaviest responsibility, since it is up to him to lead, to point the way to a strong, united, loyal organization. A keen sense of responsibility coupled with initiative and alertness are among the qualities necessary in a successful president.

Responsibility is, above all, a quality necessary in every good official and should be a guiding factor in selecting officers for other positions.

Consider well your candidates; make your choice, and then VOTE.

E. S. Kellog Lectures Before Economics Class

Eugene S. Kellog, County Horticulturist, spoke before Dr. Ellison's Economics class third hour this morning on some phases of agriculture. The class is studying the subject of Economics of Agriculture.

Earlier Opening Hour Set For Summer Session

An earlier hour of opening will be adopted for the summer session, according to an announcement made by President Phelps this week. The opening hour will be fixed at 7:30 instead of 8:15 which is the present hour of opening.

In order to allow enough periods to meet the required work for a specified number of units, it was found necessary to open school a period early or to hold sessions on Saturday. The plan of an earlier opening hour met with almost unanimous preference when submitted to faculty members who will instruct here this summer. Five periods will be scheduled in the forenoon.

Remember next year's officers will make or break the year. VOTE.

Tea Dansant To Honor Local H. S. Girl Graduates

Local high school girl graduates will be honored by a tea dansant to be given by the A. W. S. Saturday afternoon, May 23, between the hours of three and six. All A. W. S. members are expected to attend the tea dansant since they are hostesses of the afternoon.

The committee arranging for the affair includes Ruth Garner who will provide a program for the entertainment. Bernice Gange who has charge of the service will also issue invitations. Decoration has been entrusted to Clara Parrett while Eleanor Warren will arrange for refreshments. Posters will be made by Dorothy Kimes and Grace Miksch will be in charge of the clean-up committee.

Elementary School Notes

Many of the boys who have been making kits explained the construction of the kites in an assembly held recently. The boys have been flying kites at recess.

A gymnasium exhibition will be given this afternoon at two o'clock under the direction of Eleanor Ginno. College students and teachers are invited to attend the exhibition.

Men's Glee Club Sings Before Several Audiences

The Men's Glee Club quartet sang at an entertainment given by the Sciots in Fithian Hall last Saturday evening. Monroe Langlow also entertained with several solos.

Members of the Men's Glee Club appeared at Recreation Center last night in the Better Homes Week program which marked the first big evening meeting of the Better Homes promoters.

Sunday morning the Men's Glee Club will sing at the Methodist Church. "The Lost Chord", which was a selection sung by the club at the Granada Theater will be sung Sunday.

(Continued from Page 1, Col. 4)

Three Fates—Ira Learned,
Anna Lincoln, Alta Faulkner.
Epimetheus—Richard Proud.
Bird Soloist—Mildred Sample.
Pan—Roscoe McGuire.
Echo—Margaret Patrick.
Zephyrus—Merle Weidman.
Spirit of Dreams—Jane Ames.
Dream Soloist—Frances Jones.
Hope Soloist—Marian McCandless.

Hope—Eleonore Ginno.
Eumenides—Ruth Barnett, Rose Ethel Lesh, Christine Hamilton, Ester Janssens, Viola Schoen, Gladys Oglesby.

Birds—Virginia Colton, Elsie Travis, Ione Wilson.

Winds—Helen Erichsen, Eleonore Ginno, Janice Irwin, Elizabeth Lane.

Phantoms:
Witch—Helen Erichsen.
Skeleton—Janice Kennedy.
Devil—Margaret Patrick.
Ghost—Fay Thompson.

Choruses sung by the Women's Glee Club.

Production Staff:
Dean William Ashworth—Director of Masque.

Mrs. Helen M. Barnett—Director of Music.

Miss Winifred Weage—Director of Dancing.

Costumes and Properties—Miss Winifred Frye, Miss Hazel Severy and the College Sororities and Fraternities.

Posters—Mr. Hamilton Wolf and Art Classes.

Song Winning Second Prize Printed Below

In order that students may have a copy of the words of the song which was awarded second prize in the College song contest sponsored by the Literary Forum the song is printed below. The song written by Margaret Conronise and published last week was awarded first prize of five dollars. The following song which was written by Mary Virginia Platt may be sung to the tune of "Crimson and the Blue":

College Hymn

While the mountains round about
us
Heights eternal raise,
There will live the inspiration
Of our college days.

CHORUS:

Sing the praise of Santa Barbara,
Sons and daughters free,
Sing to her, our Alma Mater,
Sing to S. B. C.

We will ever heed thy challenge,
Loyal, steadfast, right;
We will ever hail thy colors,
Olive green and white.

Pledge we then, our college mother,
Pledge our hearts anew,
While the ocean lies before us,
We'll to thee be true.

Mrs. Barnett Receives Painful Ankle Injury

Mrs. Barnett received serious injury to her right ankle while participating in the Student Body Beach picnic held last Friday. While sprinting in a foot race by the faculty women, Mrs. Barnett slipped on a piece of wood which had been unnoticed, turning her ankle. The sudden twisting of her ankle tore the ligaments loose and a blood vessel in the ankle was broken.

Although Mrs. Barnett is now able to walk about with the aid of a crutch the ankle has been placed in a plaster-cast and the injury is a painful one.

Ensemble suits which have been completed by the senior sewing students will be placed on exhibit Home-coming Day in the Domestic Art Room. Other sewing projects will also be exhibited.

GOLD FISH CAFE

Inspection of our Kitchen is earnestly invited at all times—

All Dishes Sterilized Before Serving

Telephone
3462

1025 State Street
Santa Barbara, Calif.

Looking around involves no
obligation—please come in!

COMPARISON DETERMINES VALUE

The Great Wardrobe

Quality Since 1886

Frosh To Picnic Near Castle Rock Tonight

Picnicking will be the form of social amusement for members of the Frosh class who will meet at Castle Rock late this afternoon for their initial picnic of the year. This is the first social event of the year for the Freshman class.

The committee arranging for the affair includes Norvel Dice, chairman; Mildred Sample, Bus Heggie. Edith Comstock and Elsie Travis are responsible for the eats.

Students Enjoy Beach Party On Friday

An obstacle race by Dr. Ellison, Dean Ashworth and Mr. Wolf, a race by the women faculty members, baseball, and a spectacular ocean plunge by a Beta Sigma Chi pledge, were included in the fun at the Student Body beach party last Friday.

Baseball was the center of attraction before and following the picnic lunch. Fred Jacobs proved the hero of the hour by plunging into the ocean to rescue the ball which was knocked into the sea by a heavy hitter.

Come in and Visit Our

LUNCH DEPARTMENT

You'll Agree
that it's the
BEST Place in Town

TO EAT—

DIEHL'S

823 State Phone 44

UM! UM!

Hot Waffles

and

Real Maple Syrup

Day and Night

BROWN-DU MARS

912 State St.

The
First National Bank
4%
Paid on Savings

Osborne's Book Store
STATIONERY - ENGRAVING
SCHOOL SUPPLIES
923-925 State St. Tel. 495

DOINGS OF THE GREEK LETTER SOCIETIES

All the sororities will participate in a get-together beach party planned for May 25. Following the party the sororities will go to their respective meeting places.

A. W. S. Elects Officers For Fall Semester

Ester Janssens will be president of the A. W. S. for the fall semester as a result of the election of officers held Tuesday morning. Keen competition for several offices was a feature of the election of the new officers who will be installed at the last meeting of the A. W. S. in June. Edith Comstock and Grace Miksch were unanimously elected to the offices of vice-president and clubroom chairman, respectively.

Charlene Hord was chosen secretary while Dorothy Kimes received the treasurership. Lucile Dexter, who is present social chairman for the G. P.'s, was elected social chairman. Eleanor Warren was elected student councillor.

Barn Dance Planned For Friday, May 22

The Barn Dance at the Farm Bureau Hall in Goleta next Friday will be one of the unique social events of the year, according to present plans. The G. P.'s under the direction of their social chairman, Lucile Dexter, are sponsoring the dance.

In order to be in keeping with the atmosphere of the dance, students are asked to wear informal clothes, such as sport outfits and other clothes suitable for school wear.

Remember the Student Body Election.

—GET—

Walk-Over

TRADE MARK REG. U.S. PAT. OFF.

SHOES
at

Rodenbeck's

"Home of Good Shoes"

1019 State St.

WE SPECIALIZE ON
Dance Programs
Pamphlets
Booklets
School Annuals

DAILY NEWS
JOB DEPARTMENT
Phone 1600
Ask for Mr. Sutton

Phi Chi Alpha will participate in a Bohemian supper followed by formal initiation Monday evening at the home of Mrs. Croswell.

Delta Zeta Delta is planning a beach party Monday evening.

New Student Telephone Schedule Posted Today

A new student telephone schedule which is to be inclusive from May 18 to June 12, will be posted today. Students are asked to see if their names are on it. Any information regarding the telephone may be obtained from the chairman of the telephone committee, Anna Lincoln.

Men's Club Schedules Dinner For Tuesday

The Men's Club will hold a dinner Tuesday evening at the Y. M. C. A. This will be the third and last dinner of the year.

Stunts for the evening will be arranged by Jack Vince and Reid Hollingsworth. Others arranging for the affair include Allen Keim, Rene Le Fevre, Harold Morehead, Perry Linder, and Paul Cradler.

That bobbed hair is going out is strongly disproved by two recent bobs which appeared upon the campus. Charlene Hord and Mabel Sorem are the latest advocates of the fashion.

Grant Youngs, popular former student, has been visiting the campus for several days. Grant expects to attend U. C. in the fall.

Mary Thill, former graduate of the H. E. Department was a visitor upon the campus this week. She is now doing graduate work at U. C.

PRESCRIPTIONS
EASTMAN AGENCY
WHITMAN'S CANDIES
STATIONERY

Red Cross Drug Co.

328 STATE ST. PHONE 15
WE DELIVER

WATERMAN and PARKER
FOUNTAIN PENS

S. E. MORRIS

1219 State St. Phone 449

NEW 8 PIECE CAPS
\$2.50

EISENBERG'S
SHOP OF BETTER CLOTHES

Mother's Delighted With A. W. S. Tea Saturday

Many mothers expressed their delight in the mother's tea given Saturday by the A. W. S. Madeline Connell entertained with two vocal solos.

The committee in charge of the tea received high commendation for the success of the affair. The charming table decorations of poppies and nasturtiums were arranged by Margaret Ellison. Emily Wilson had charge of the service while Irma Steward arranged for refreshments. Clara Ziegeler and Margaret Cronise were responsible for entertainment and publicity, respectively. Edna Dowler chaired the clean-up committee.

Improvement Made In Women's Club Room

New curtains which were put up in the women's club room Tuesday add to the attractiveness of the room. Couch covers also appeared at the same time. Curtains were made by Delta Sigma members. A fern given to the clubroom by Tau Gamma Sigma adds a touch of cheeriness to the room.

Improvements in the clubroom have been made through the efforts of the clubroom chairman, Mabel Sorem.

Men's Glee Club Appears In Oxnard

The Men's Glee Club presented a one hour program in the Oxnard High School auditorium Wednesday evening. The program was given under the auspices of the Masons.

Fred Snodgrass of Oxnard arranged for the performance following an appearance made by the Glee Club before the Ventura Rotarians at a dinner which Mr. Snodgrass attended.



Typewriters For Rent

We have the kind you want.
Catch up on your work now.

Tierman Typewriter Exchange

705 State St. Phone 258



Loyola Wins From Locals Who Fight To The Finish

The Loyola Lions came north last Saturday and took a 5 to 1 decision from the Roadrunners by dint of fast fielding and base-work. Although Anderson struck out eight men to McDermott's six and allowed only three hits while Mac was touched for seven, the Lions used their hits to advantage and made good use of Santa Barbara's errors.

The Roadrunners played a good game to the end, making no bone-head plays and allowing only two errors; but the Lions were too good.

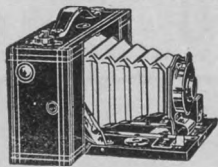
Loyola rallied for four tallies in the fourth frame when McDermott walked, Lowry gained the first sack by failing to dodge a wild pitch, Marshall brought McDermott home with a single, Lowry and Marshall scored on an overthrow at first which let Harvey on, and Duffy drove in Harvey with a second hit.

Keim scored in the sixth when he got on first with a single, stole second, took third on an overthrow, and scored on a single by O'Reilly.

Loyola chalked up another tally in the seventh when the bases were loaded after Duffey tripped, Hall was safe when Andy preferred to keep Duffey at third, and Girard walked. Curran dropped one to Andy who pegged out Duffey at the plate. Hall scored the fifth marker on a wild pitch.

The Roadrunners showed a world of support in the sixth inning when the infield kept the bases clean by some fast playing.

THE BOX SCORE									
Loyola—	AB	R	H	P	O	A	E		
McIsaacs, ss	5	0	0	1	7	1	1		
Curran, lf	4	0	0	0	0	0	0		
McDermott, p	3	1	0	1	2	0	0		
Lowry, cf	3	1	0	2	0	0	0		
Marshall, c	4	1	1	6	2	0	0		
Harvey, 3b	4	1	0	2	1	0	0		



Kodaks
and
Finishing

COPELAND'S

Next to the Post Office

Boeseke - Dawe Co.

HARDWARE

RAYWILL

ATHLETIC GOODS
710-712 State Street

Ellsworth and Brotherton Elected Tennis Leaders

Ted Ellsworth was elected tennis captain and Flip Brotherton was elected manager at an election held Wednesday noon. Flip and Ted have been playing fast tennis lately and they should serve their positions well. They comprised the tennis team last year also.

Baseball Team May Play Jefferson H. S.

Casey has just received an offer to play Jefferson High School of Los Angeles in baseball on the earliest Saturday convenient. Jefferson High has won the Los Angeles city league championship and is now ready to play teams of its own choice. Coach Casey says that he will accept and go south on May 23 if Jefferson High can guarantee us \$50 for the game.

Incidentally, W. G. Lopez, Jefferson High Coach, studied Physical Education in this college several years ago.

Baseball Team Will Meet Santa Ana

Football training will not begin Monday as was previously planned because Casey has decided to keep the baseball team in training for the Santa Ana game which will be played on the local diamond on May 30 according to a letter received from the southern college yesterday which stated that Santa Ana was willing to accept our \$65 guarantee.

Duffey, 1b	3	0	2	12	0	0	0
Hall, rf	4	1	0	1	0	0	0
Girard, 2b	3	0	0	1	2	0	0
Totals	33	5	3	27	14	1	1
Santa Barbara	AB	R	H	P	O	A	E
Keim, 2b	4	1	2	2	1	0	0
Peel, c	4	0	1	9	0	0	0
O'Reilly, rf	4	0	1	1	0	0	0
Anderson, p	4	0	1	3	3	0	0
Cherrie, lf	3	0	2	2	0	0	0
Breslin, ss	3	0	0	0	1	2	0
Williams, 1b	2	0	0	9	0	0	0
Sawyers, cf	4	0	0	0	0	0	0
Asakura, 3b	3	0	0	1	1	0	0
Hollingsworth	1	0	0	0	0	0	0
Brotherton	0	0	0	0	0	0	0
—Ewc4	1	2					

Totals	32	1	7	27	7	2
SCORE BY INNINGS						
Loyola	000	400	100	—5		
S. B.	000	001	000	—1		

YOU'LL MEET ALL
THE CROWD AT

Nolan's Confectionery

Stop in for one of our famous

—'CHOC' MALTS 15c—

1227 State St.

Inter-Departmental Baseball Game Set for Wednesday

The second inter-department baseball game will be played at four o'clock next Wednesday afternoon at Pershing Park. If the Junior College wins, the series will be concluded in their favor; if the C. M.'s win, a play-off game will be held the Wednesday following if the Santa Ana game for May 30 falls through. If the Santa Ana game is played, the departmental play-off game will be played on the first Wednesday in June.

Women Tennis Players Schedule Tournament

Women tennis enthusiasts will participate in the second tournament of the year which starts Monday. El Encanto courts will probably be secured for the tournaments. A schedule of matches has been arranged according to Irma Steward, manager of tennis.

Eleanor Warren Chosen Women's Athletic Mgr.

Eleanor Warren was unanimously chosen women's athletic manager for the coming year by the women's athletic council which met Tuesday. Basketball and volleyball were both managed by Miss Warren who is an enthusiastic booster of all sports. She is a member of the English "S" society and is one of the first women to win a letter.

Island Trip Planned By Outing Club

The trip to the islands on the week-end of May 29, 30 and 31 will be the last trip of the year for Outing Club members. Since trips to the islands in former years have met with hearty enthusiasm, a large crowd is anticipated for the coming outing.

Arrangements for the island trip are being made by Ted Ellsworth, men's manager of the club and members of the executive board.

College Tennis Team Wins First Encounter

The State College Tennis team scored their first victory of the year at Dean School in Montecito last Wednesday afternoon when Ted Ellsworth, Flip Brotherton, Fred Greenough, and Warren Atwood defeated the Dean School net team by winning four out of five sets, three out of four sets of singles and one set of doubles. A second set of doubles could not be played due to a lack of time.

Ted Ellsworth took his match of singles by taking the first two sets from Burleson of Dean School by the scores of 6-2 and 6-3 respectively. Flip Brotherton took his singles from Johnson of Dean School 6-0 and 6-2 respectively. Fred Greenough defeated Lesh of Dean School 8-6, 6-8, and 6-4 respectively. This was the only match which required a play-off game. Windiate took the only match of the day for Dean School by defeating Warren Atwood 6-3 and 6-2. Fred Greenough and Warren Atwood won their match of doubles from Burleson and Windiate of Dean School 6-4 and 6-1 respectively.

Williams Elected Men's Athletic Mgr. For 1925-26

At a meeting of the Athletic council held last Wednesday, Francis Williams was elected Men's Athletic Manager to succeed Edmund O'Reilly for the office next year. After a hot contest, Williams received a majority over Percy Linder in the second ballot.

McCAFFERY BROS.

TENNIS GOODS AND
BASEBALL SUPPLIES
TENNIS RACKETS
RESTRUNG

Telephone 256 636 State

County National Bank and Trust Co.

4% "The Bank of Friendly Service"
ON SAVINGS We Invite Your Account

COLUMBIA DRUG CO.

Louis Miratti and Sons

FAST FREE FURIOUS DELIVERY

Telephone 1204

Cor. State and Figueroa Sts.