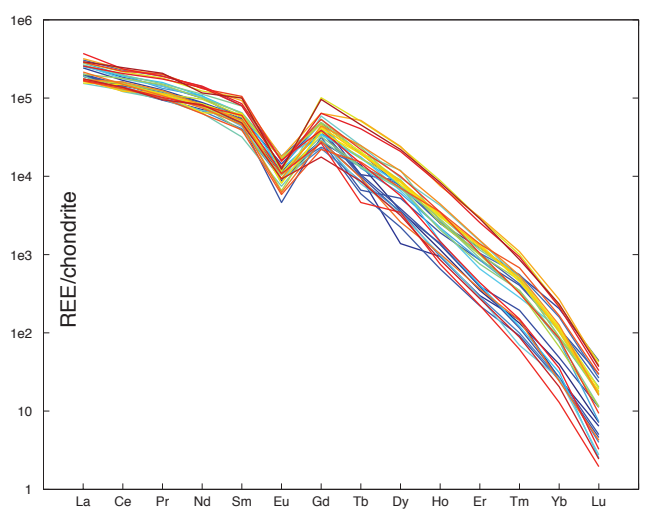
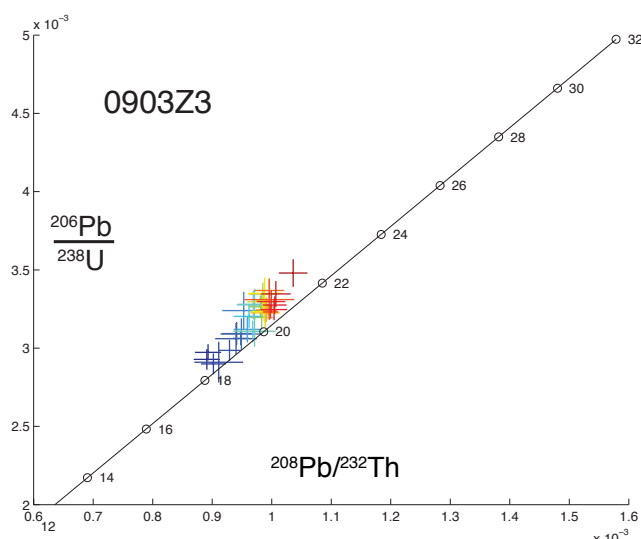
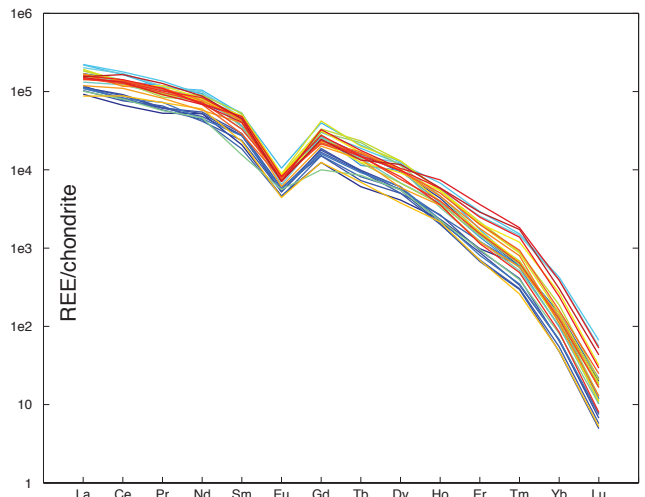
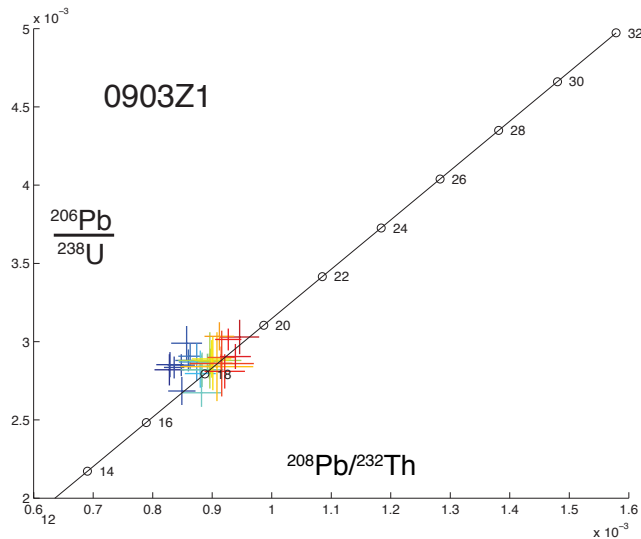
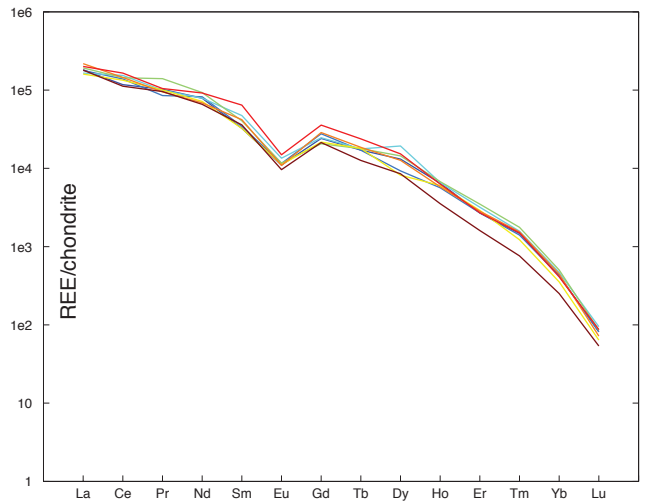
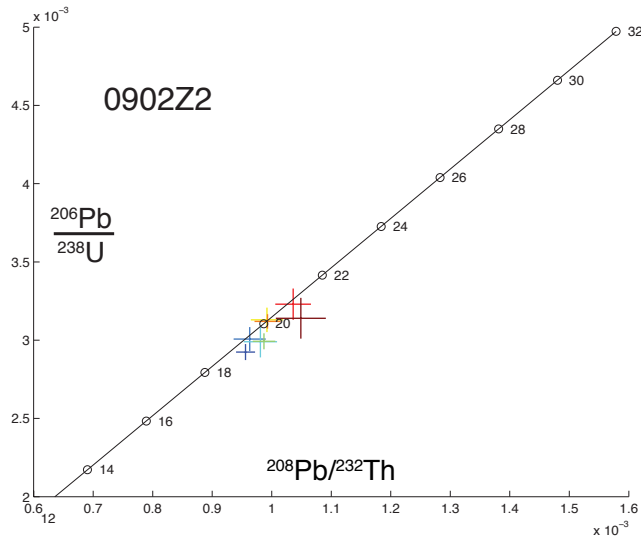
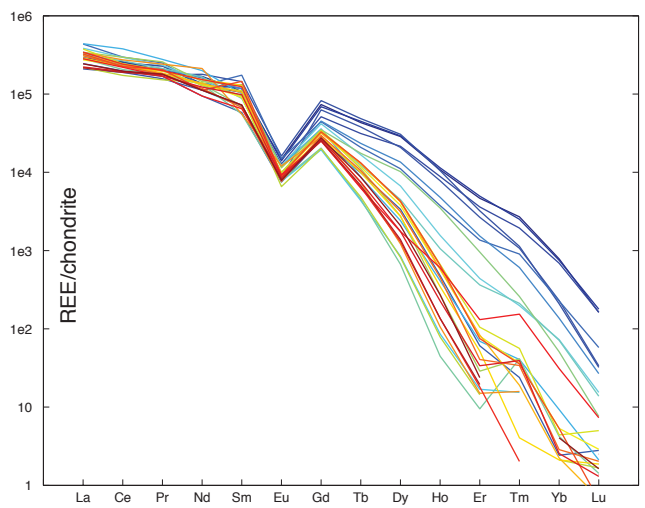
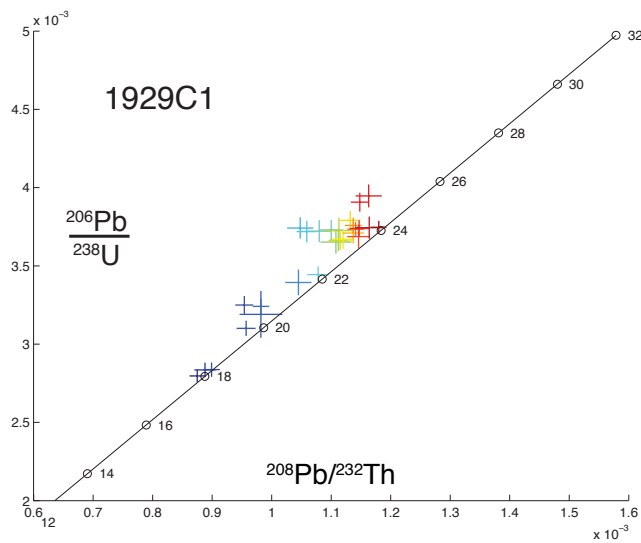
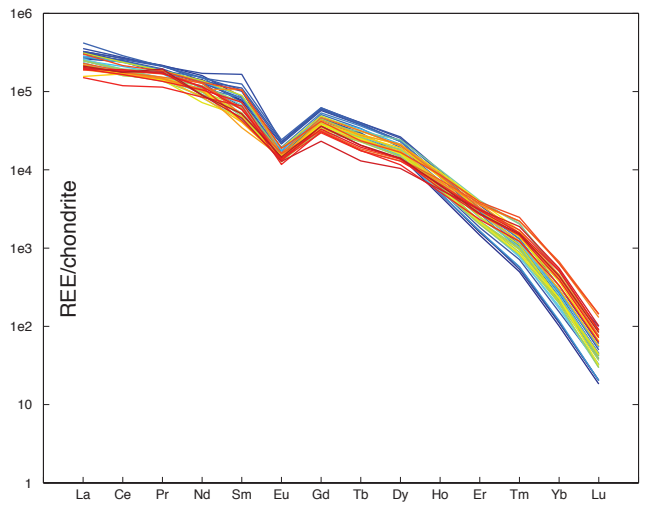
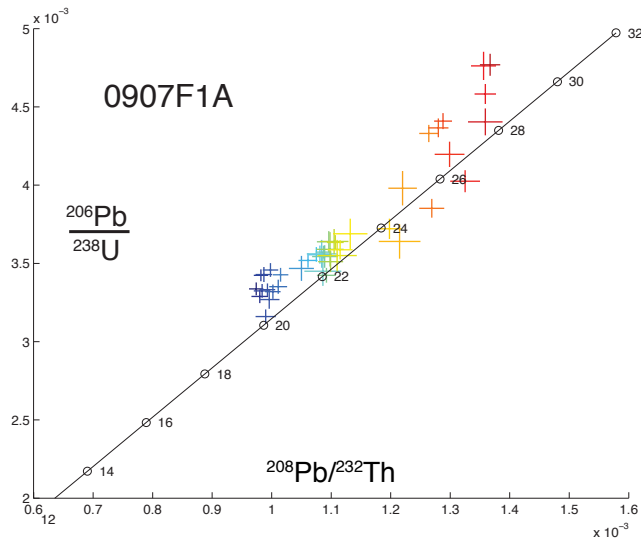
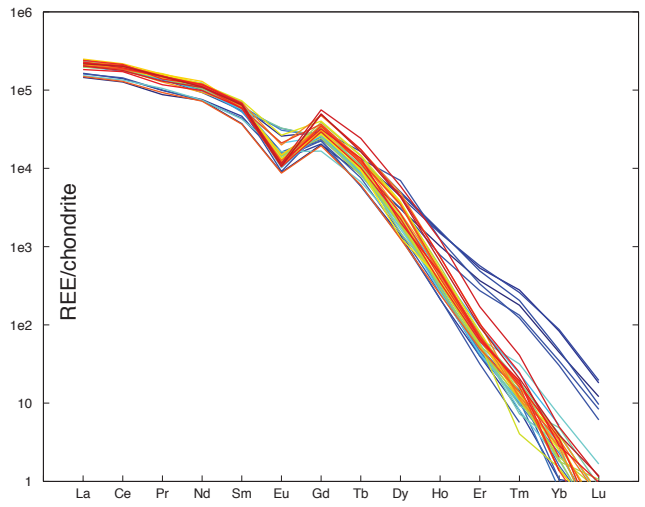
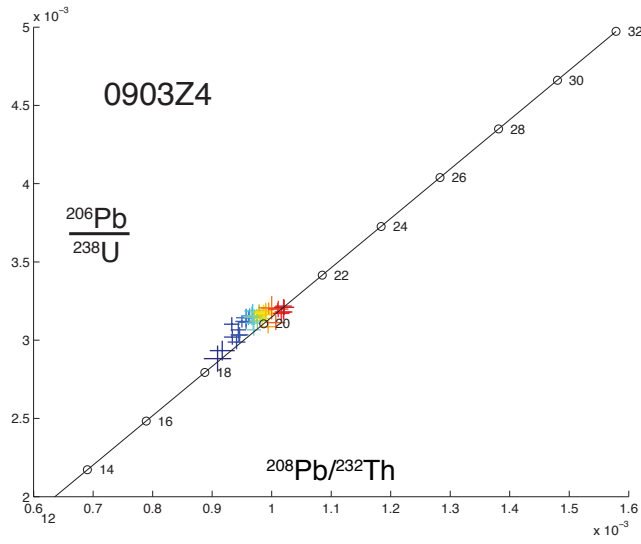
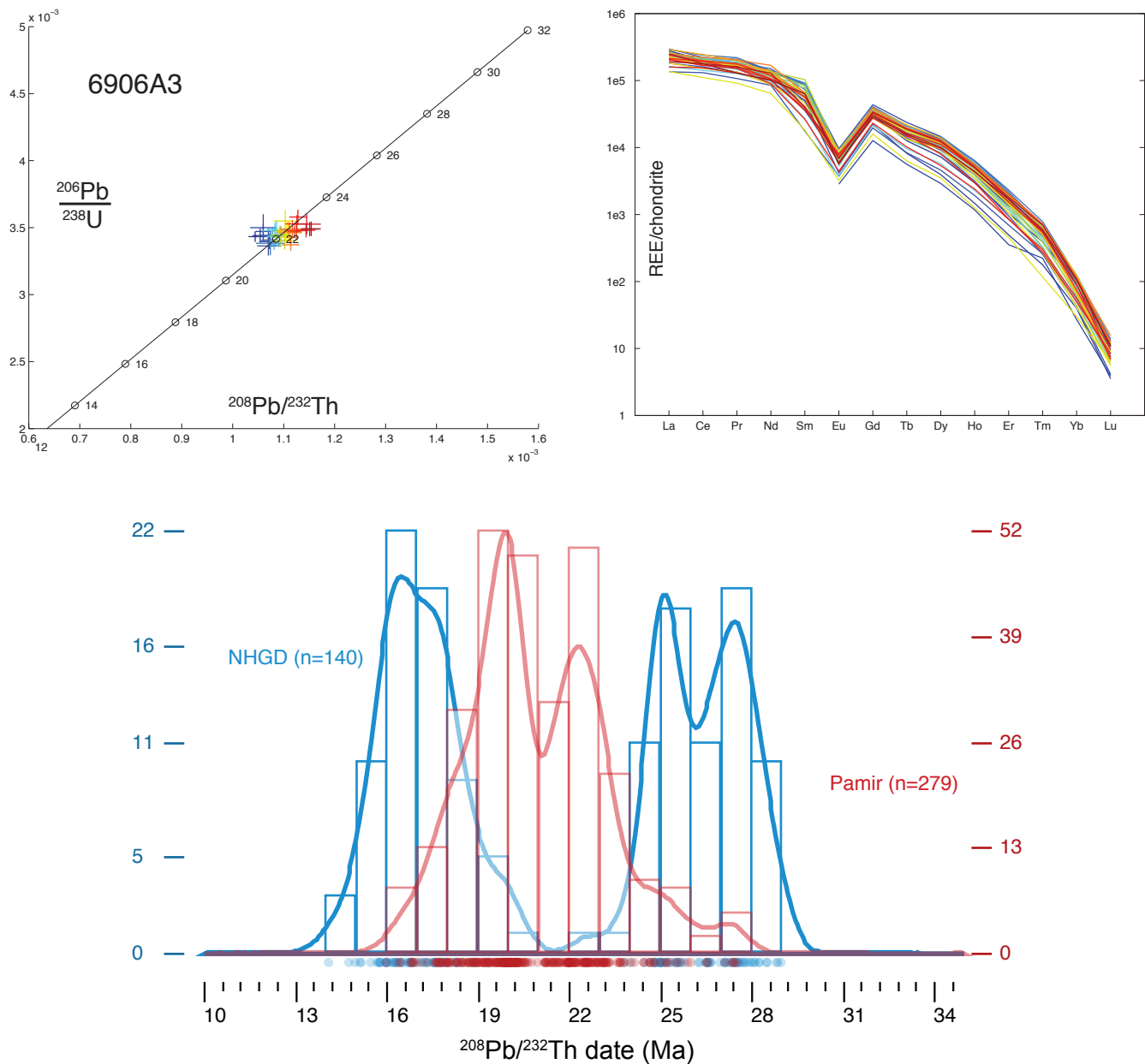


Appendix 2, Figure 1: 1. Summary of geologic events for the India-Asia orogen relevant to the Pamir, Tibet, and Himalaya. A) metamorphism, B) plate-scale processes, and C) magmatism. The ages of meta-morphism (A) in both the Pamir and NHGD coincide with the timing of slab tearing and convective removal of the lower crust. 1. Searle & Szulc, 2005; 2. Godin et al., 2006; 3. Lee & Lawver, 1995; 4. de Sigoyer et al., 2000; 5. Replumaz et al., 2010; 6. Copley et al., 2010; 7. van Hinsbergen et al., 2011; 8. DeCelles et al., 2010; 9. Nábělek et al., 2009; 10. Kohn & Parkinson, 2002; 11. Negrodo et al., 2007; 12. Chung et al., 2003; 13. Chung et al., 2005; 14. Malz, 2011; 15. Guillot et al., 1999; 16. Cottle et al., 2009; 17. Lee & Whitehouse, 2007.

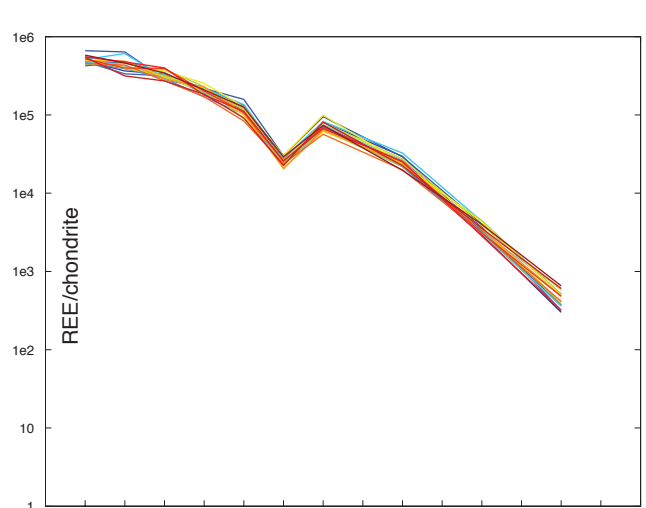
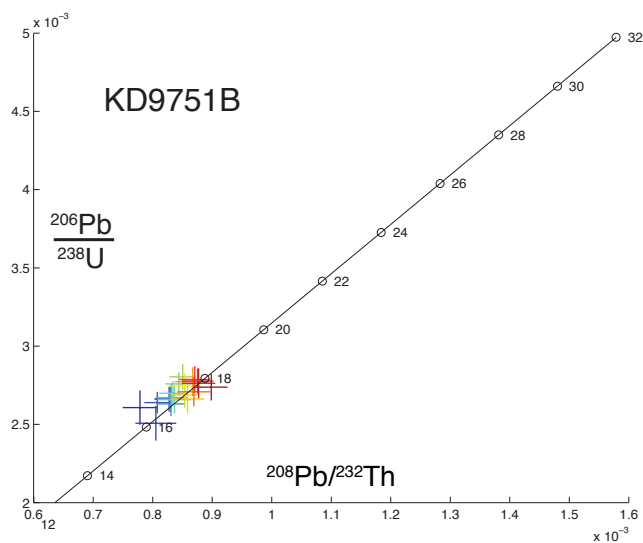
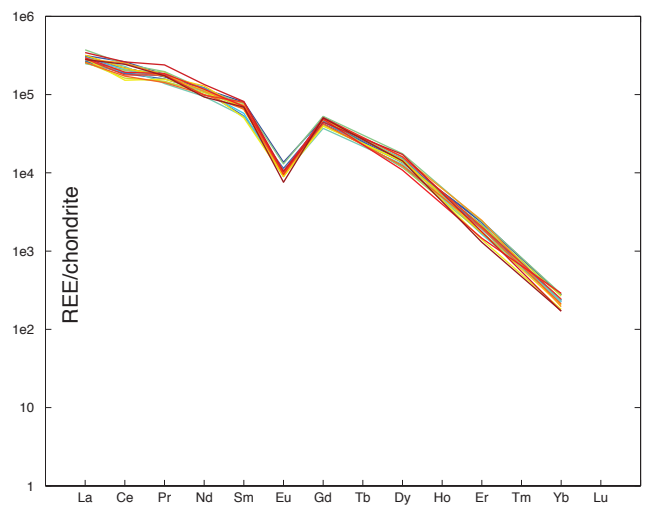
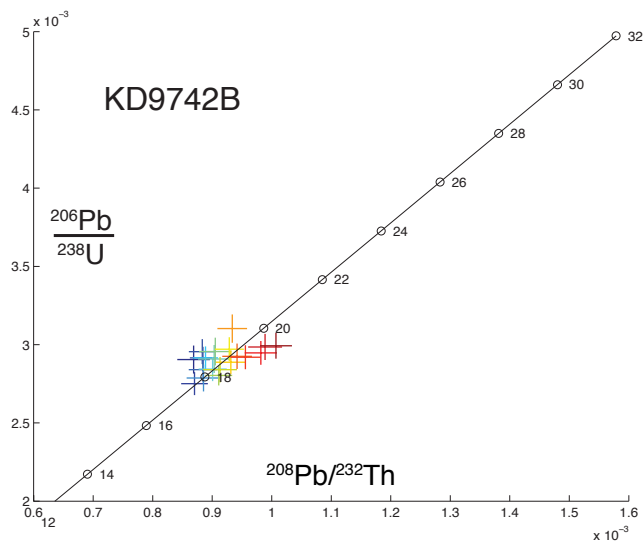
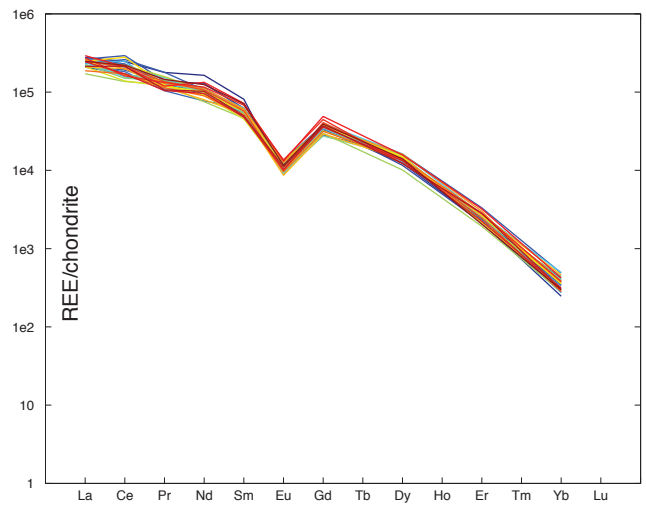
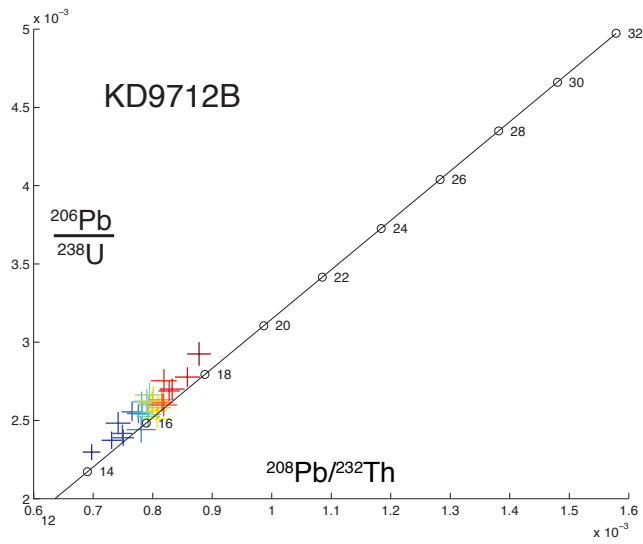


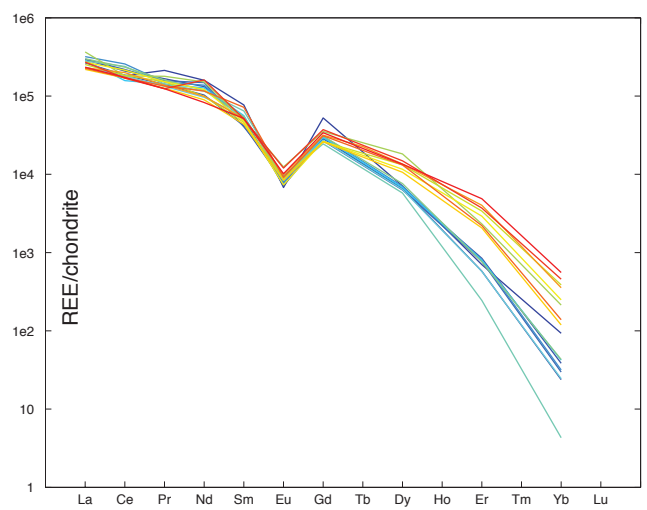
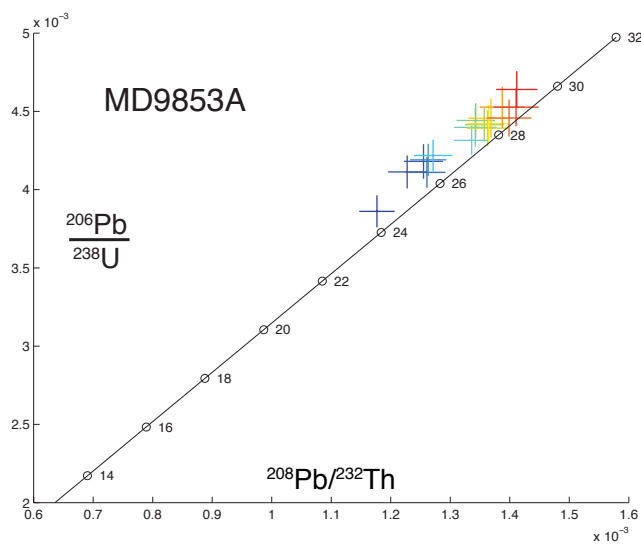
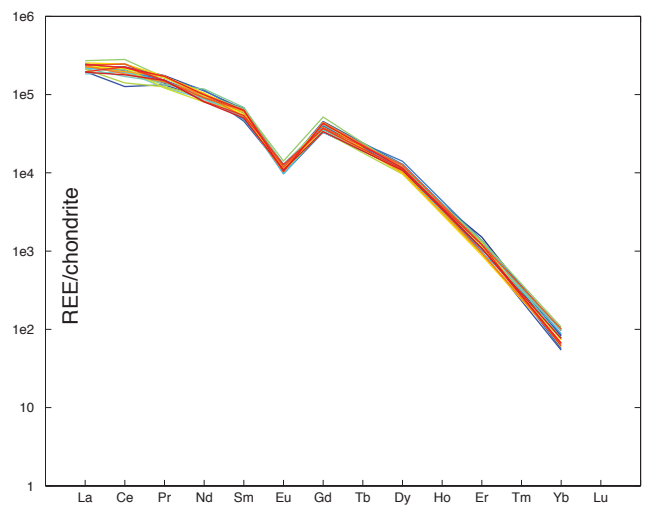
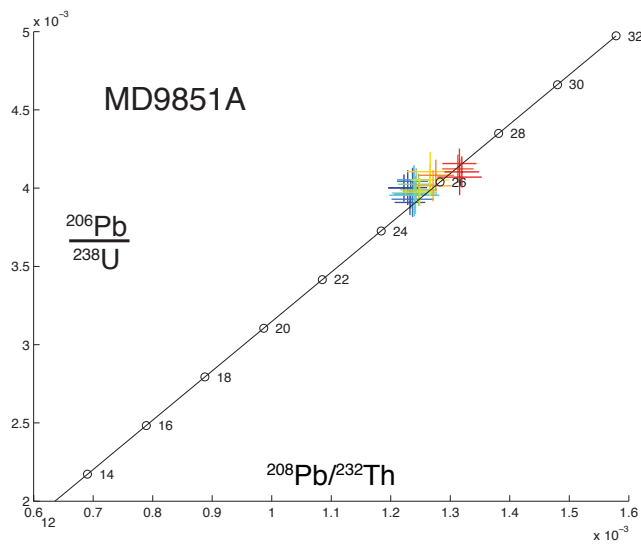
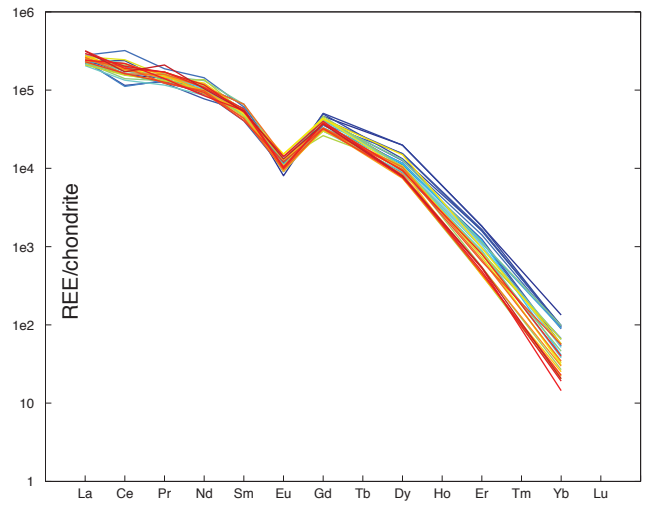
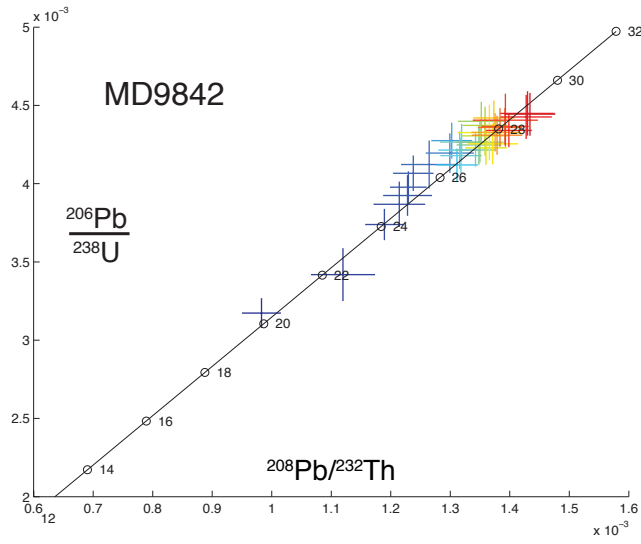




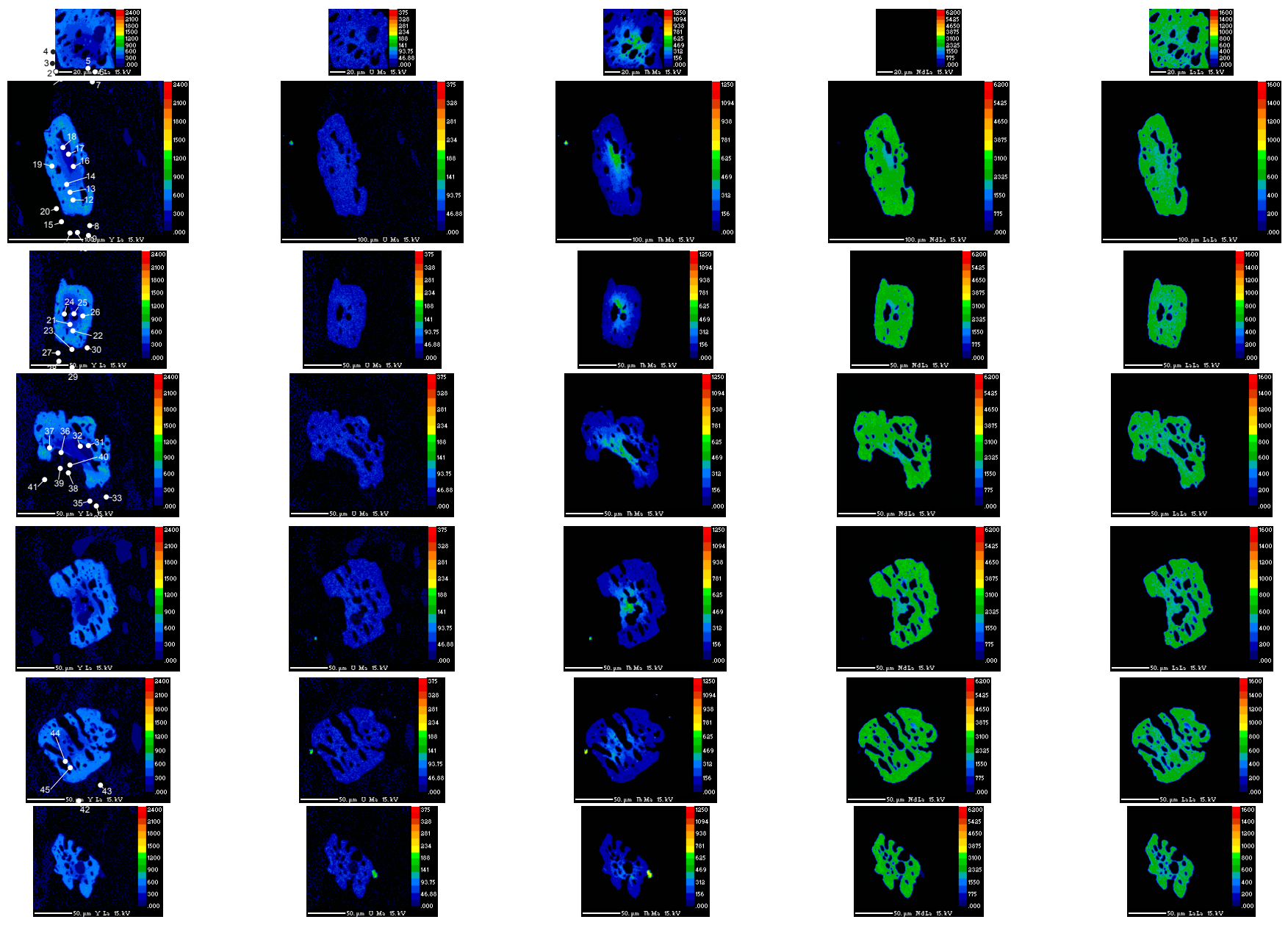
App 2, Figure 2a: U-Th/Pb concordia and chondrite-normalized rare earth element (REE) spider plots for each sample. Data on both plots are colored by  $^{208}\text{Pb}/^{232}\text{Th}$  date from low (blue) to high (red). Tb, Ho, Tm, and Lu were not measured for Mabja and Kangmar samples. For these samples, line plots were interpolated where no data exist (Tb, Ho, Tm) or not plotted (Lu). Kernel density estimation (KDE) plot and histogram of the Pamir (red) and NHGD (blue)  $^{208}\text{Pb}/^{232}\text{Th}$  dates were generated using DensityPlotter (Vermeesch, 2012).

Figure 2b, the Yb/Gd ratio was calculated from chondrite-normalized values to quantify the slope of the heavy rare-earth elements using a manageable value. Each sample was then shifted so the mean of the five oldest data per sample lay on the “zero” line. Since each sample is shifted by a different amount, the y-axis of Figure 24b cannot be quantified between samples. Using this scheme, an invariant HREE slope through time would scatter about the “zero” line. If the Yb/Gd were not invariant, the value would lay above or below the line. The space above the “zero” line represents HREE enrichment, i.e. a shallower slope of the spider plot. The space below represents HREE depletion, or a steeper HREE slope for the spider plot.

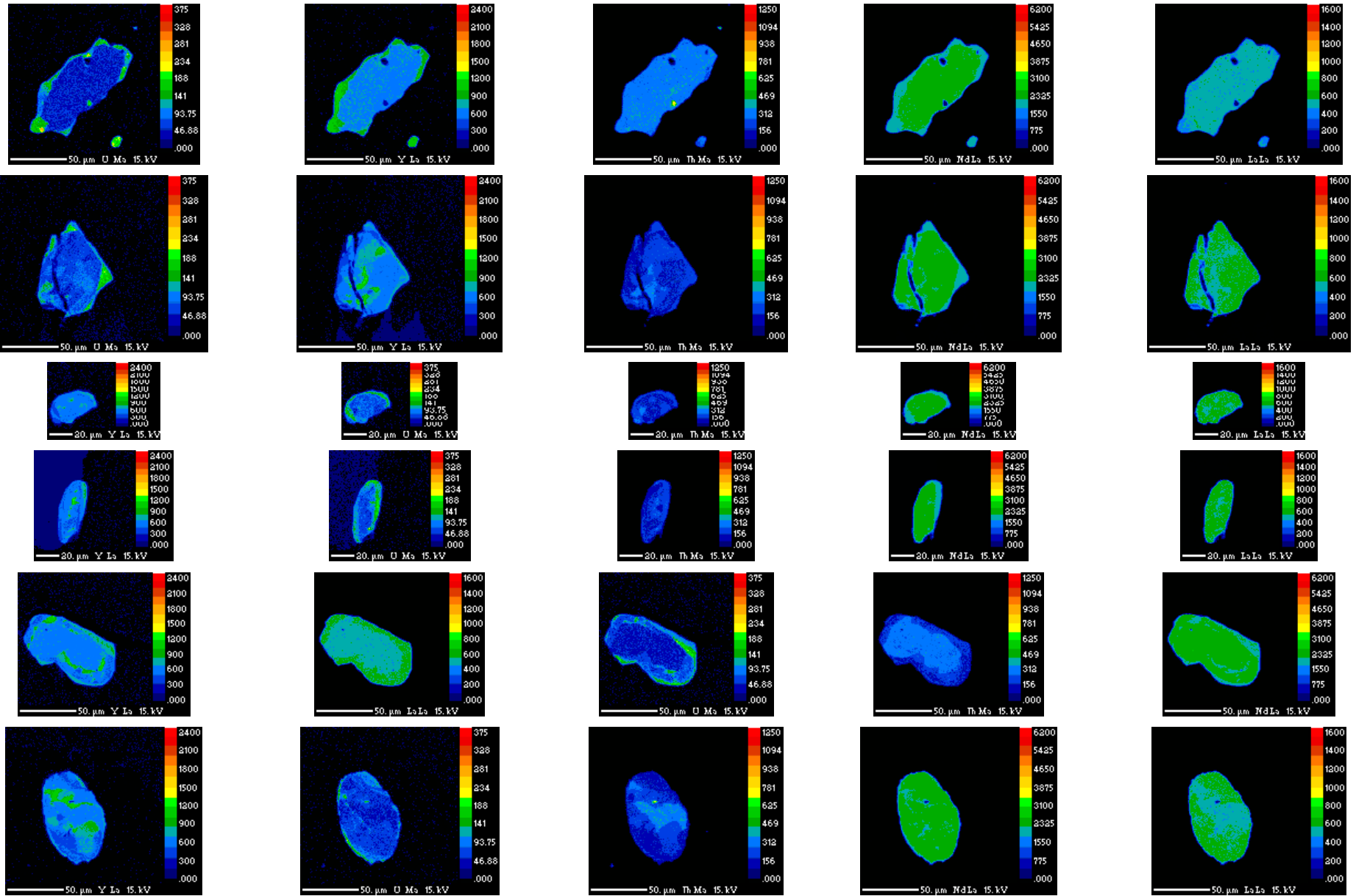




# 6906a3

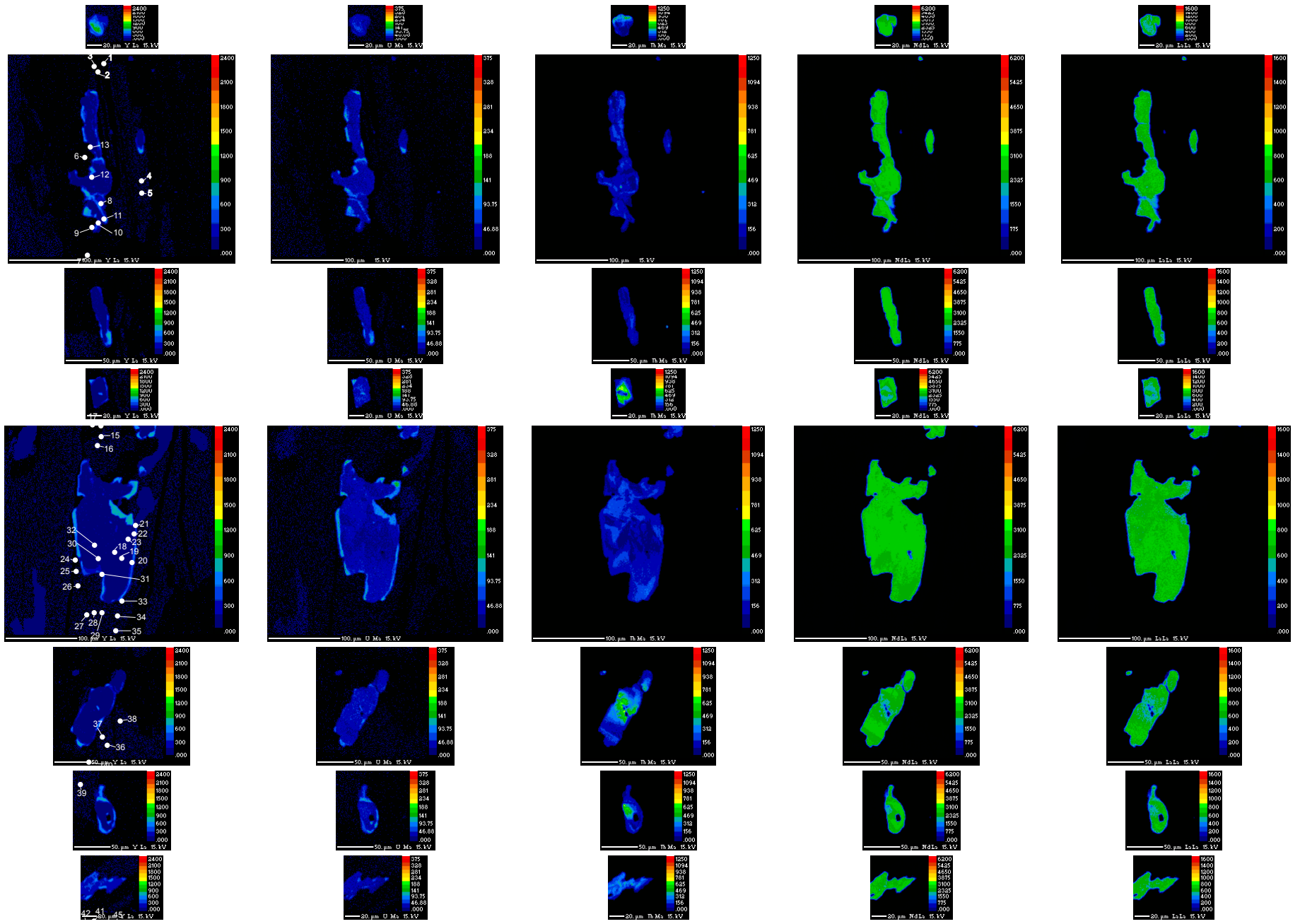


0907f1a

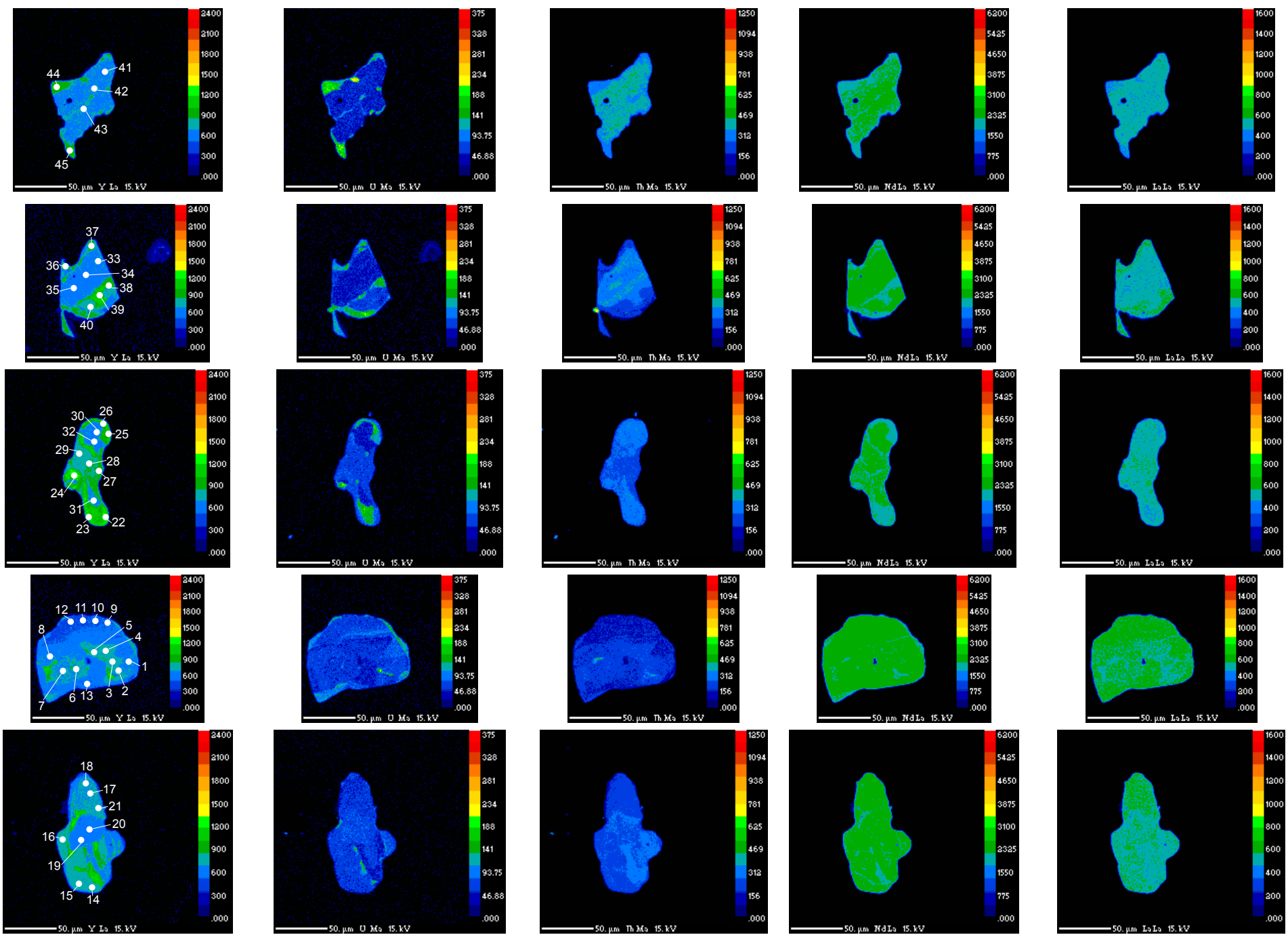




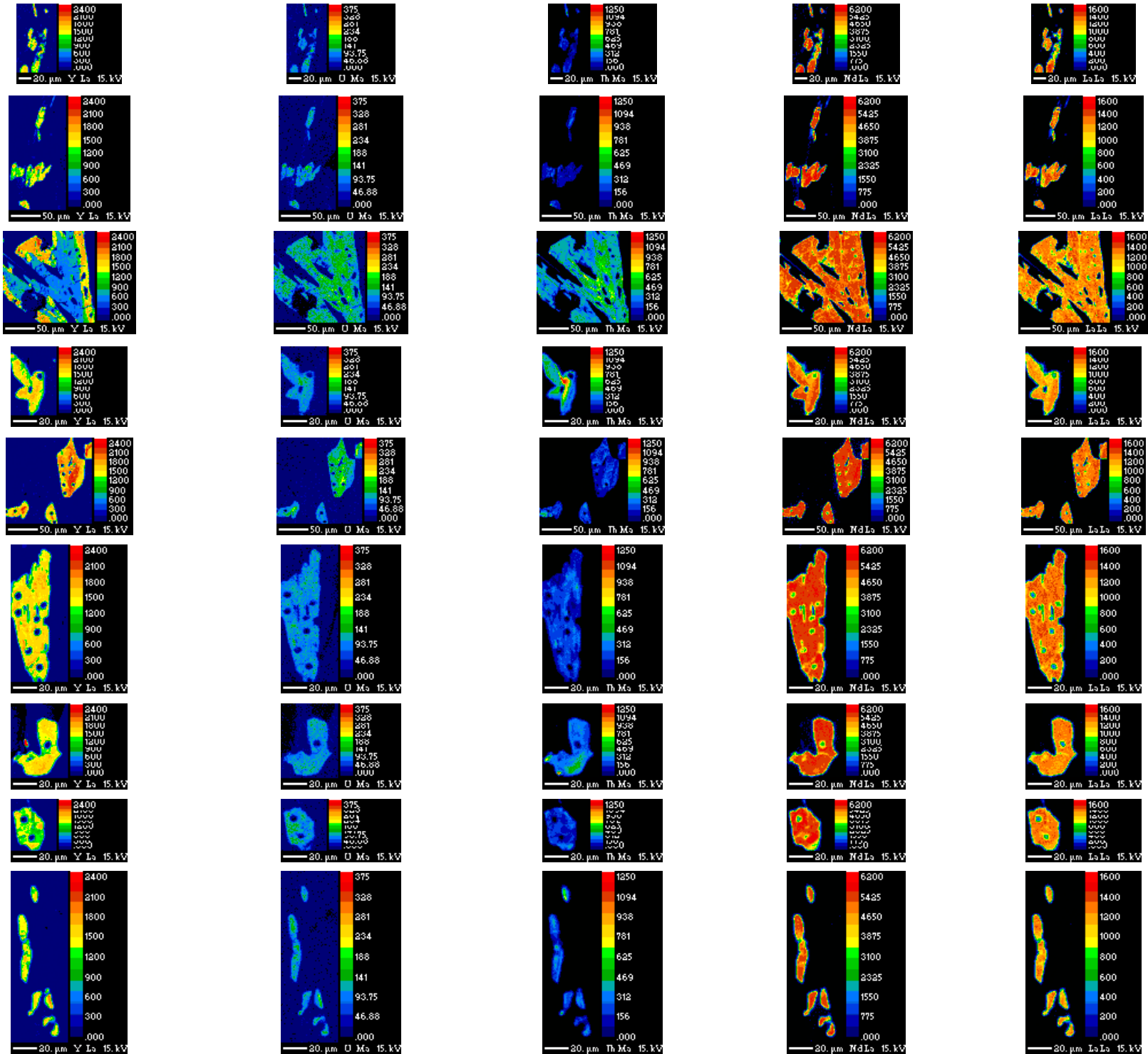
# 1929c1



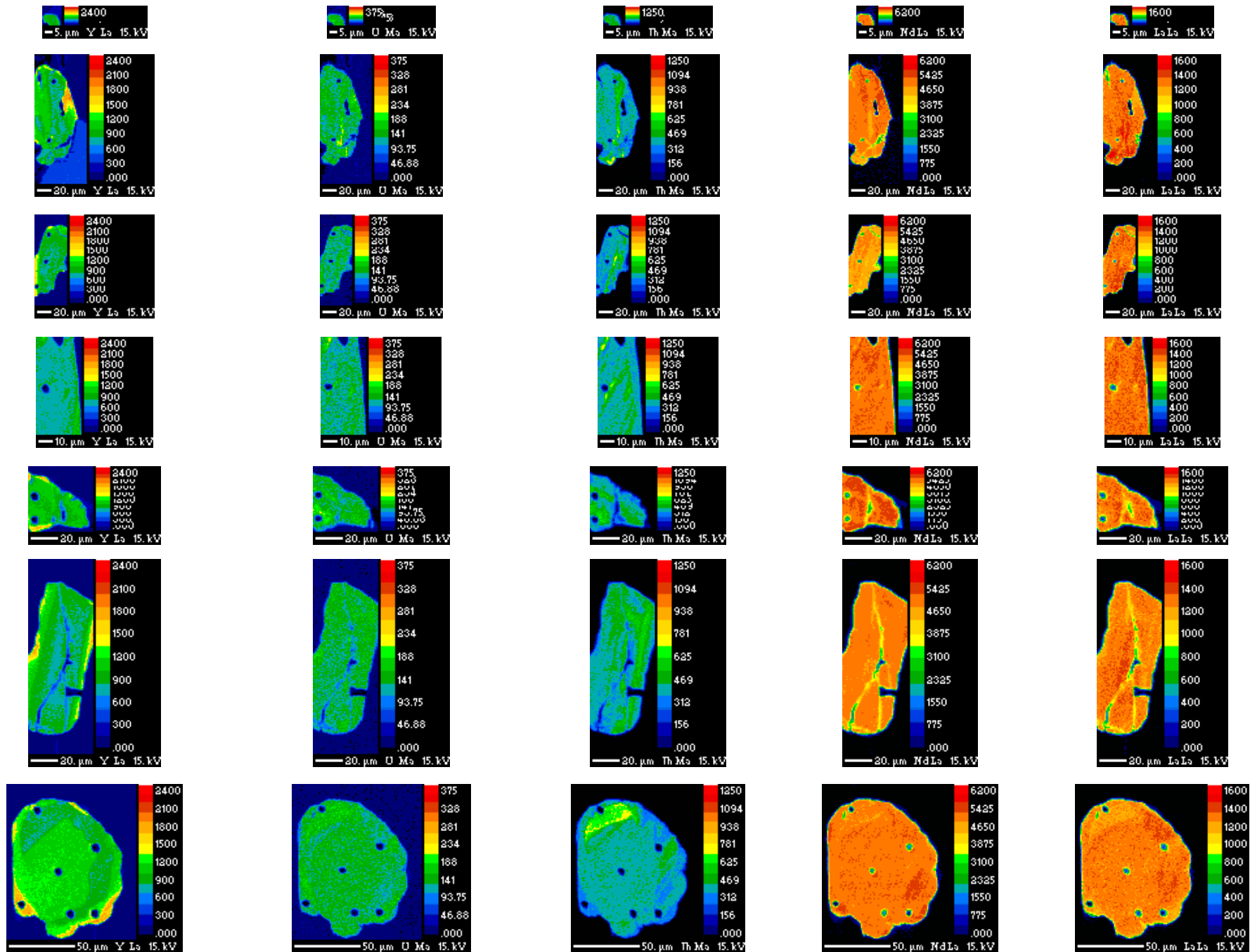
0907f1a



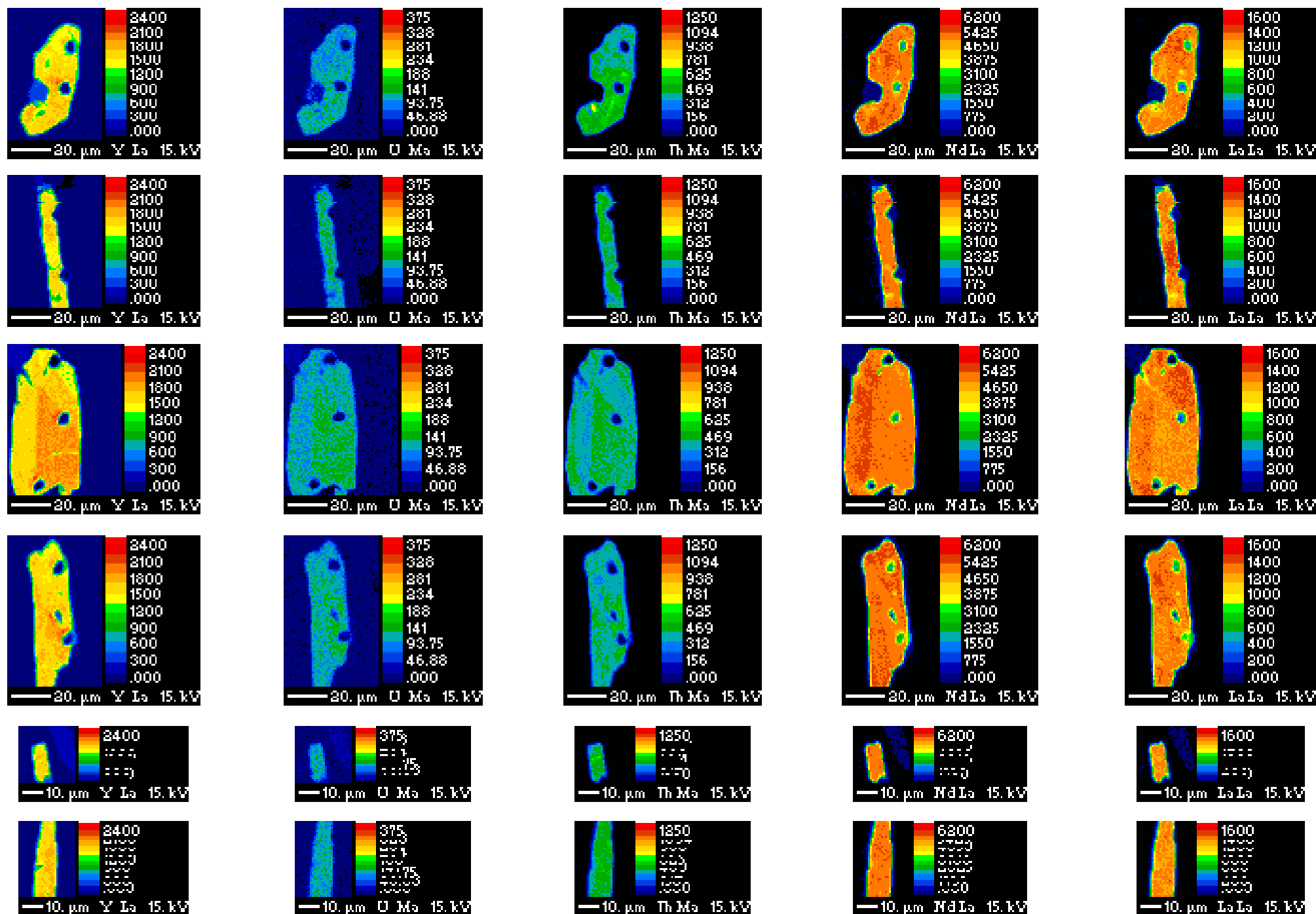
# KD97-42b



# MD98-42

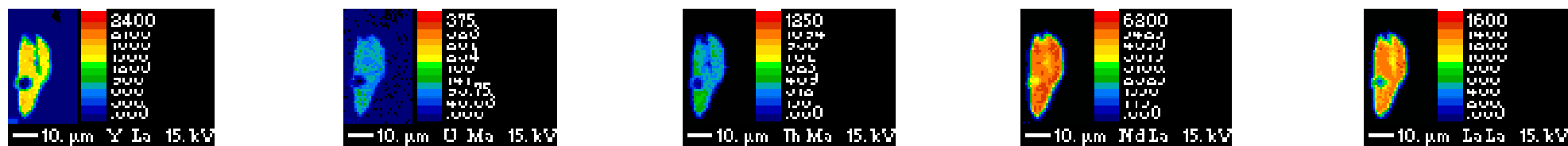
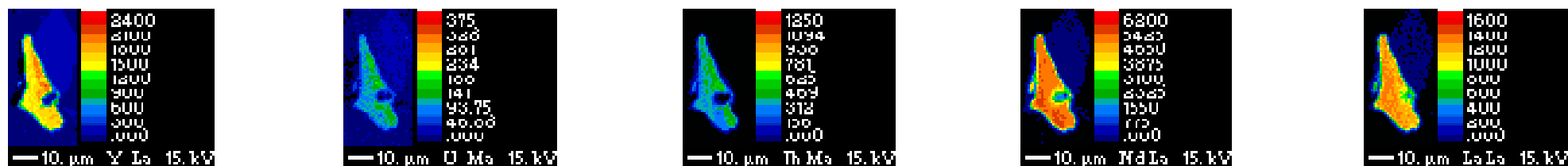
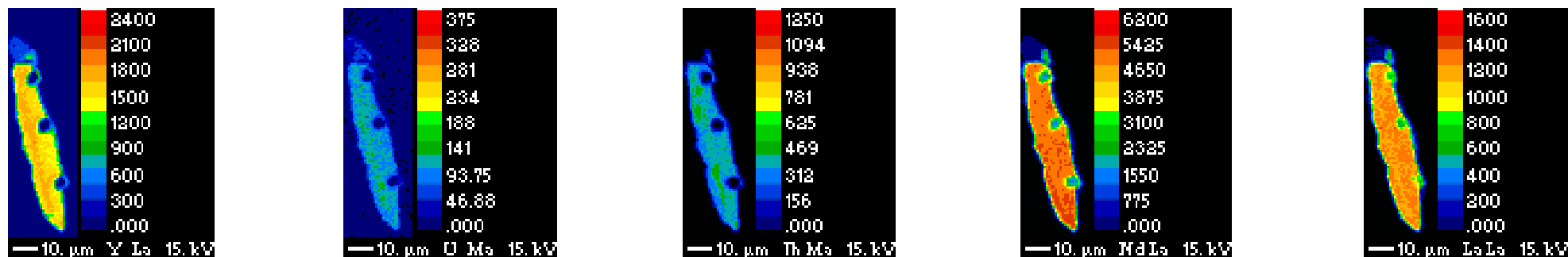
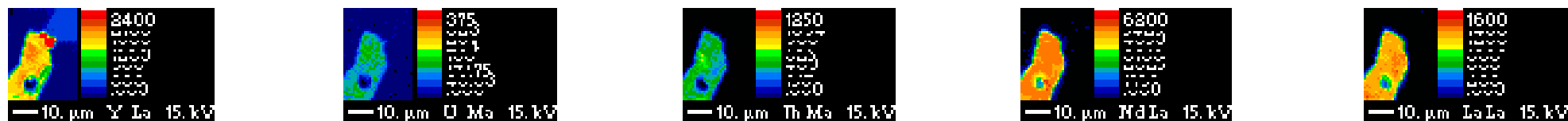
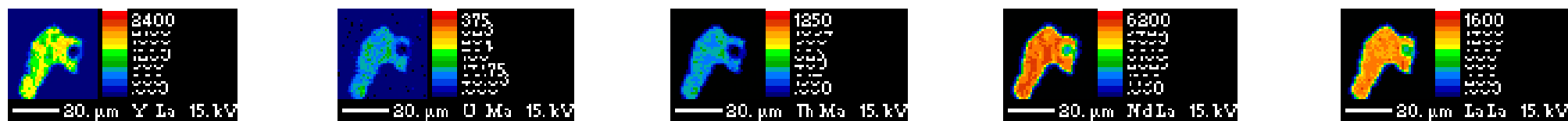
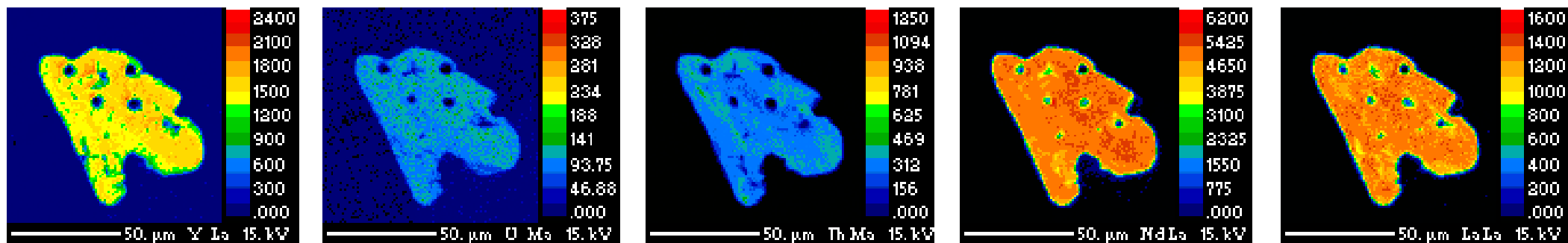


# KD97-12b

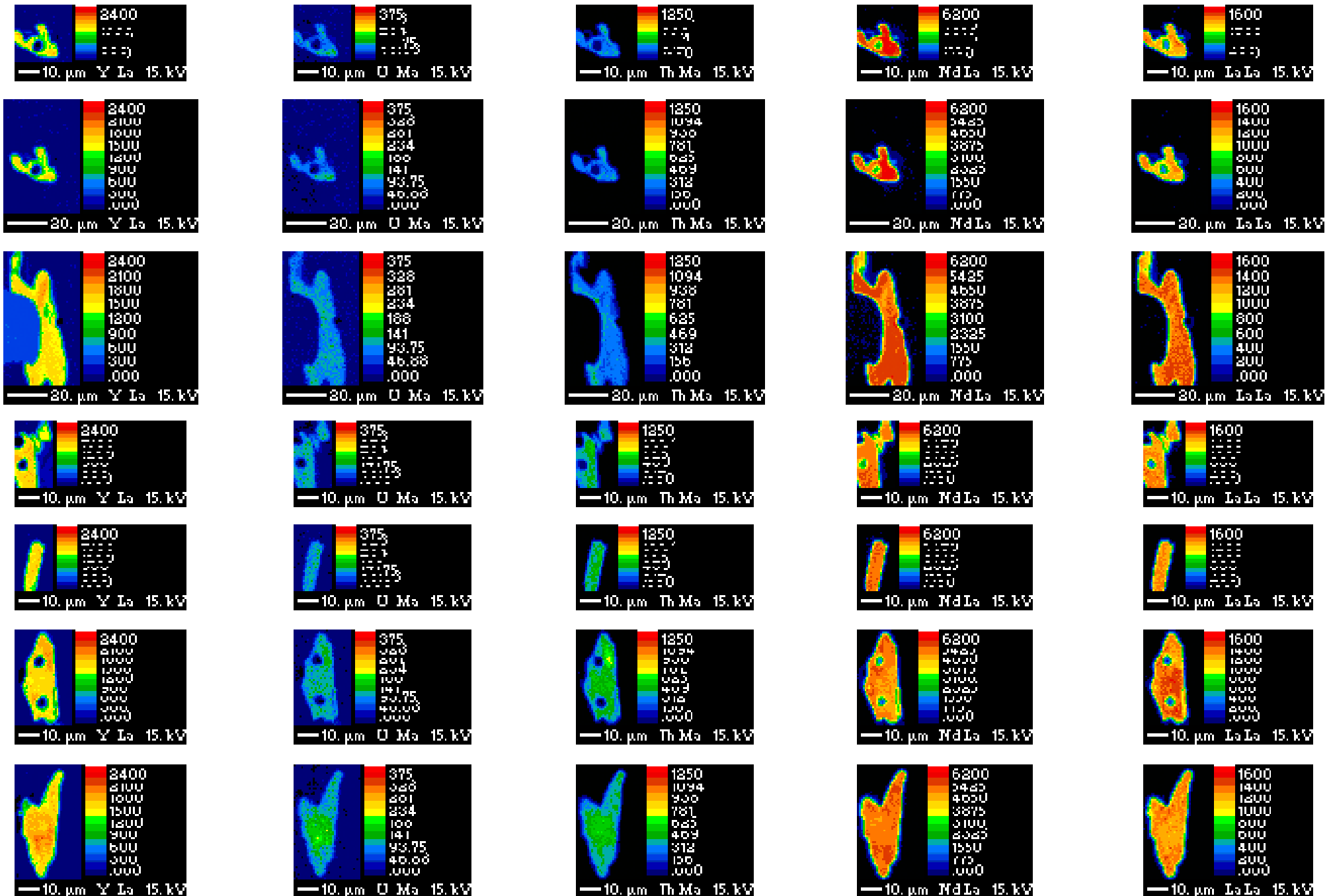




# KD97-12b

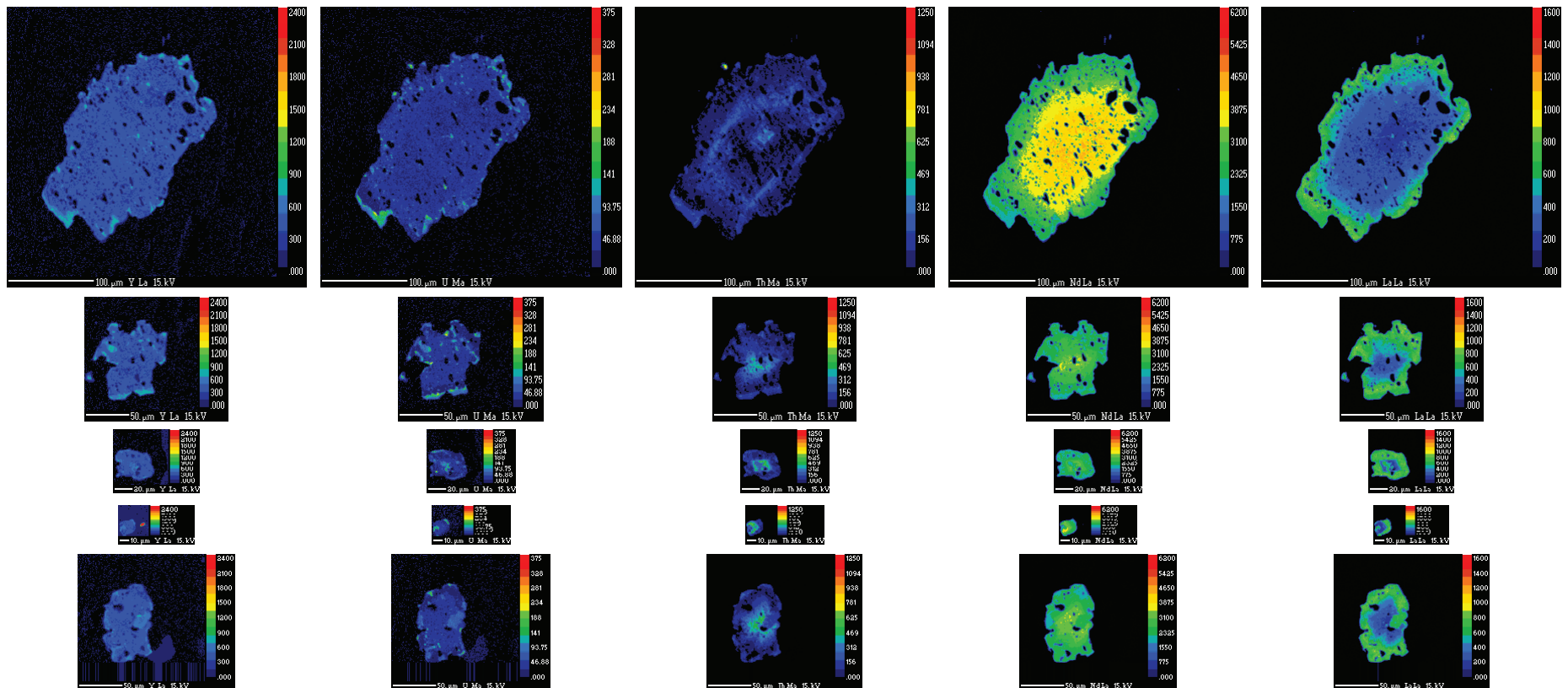


# KD97-12b



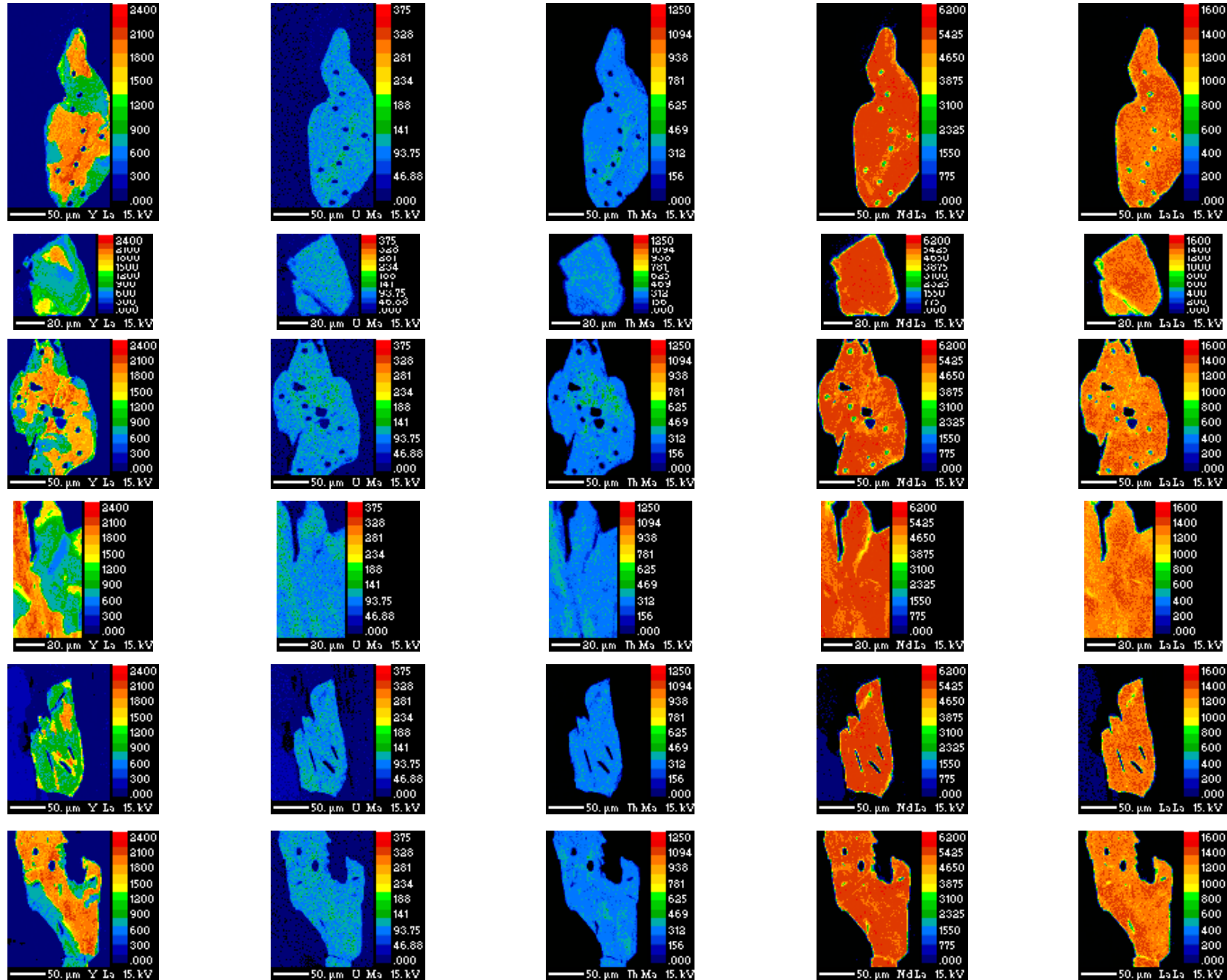


# 6906a3



App 2 Figure 3: X-ray intensity maps of Y, U, Th, Nd, and La in monazite. The scales located to the right of each map are in total counts and are globally scaled for all grains and samples. Length scales are labeled on each map. Laser spot locations are marked where appropriate, and some holes in grains are ablated spots.

# MD98-53



# MD98-42

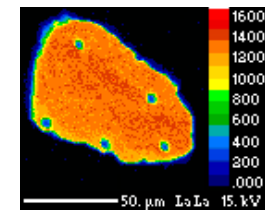
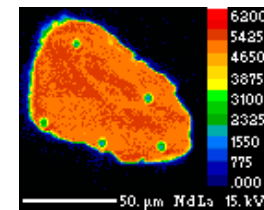
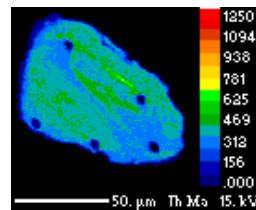
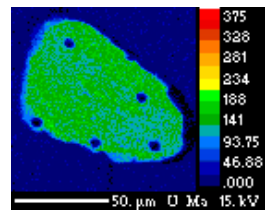
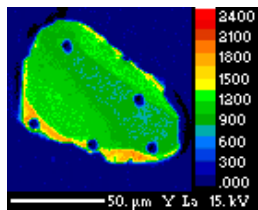
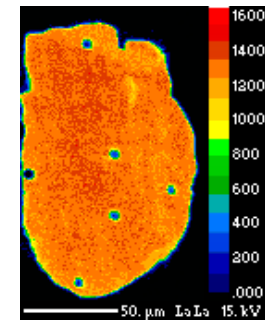
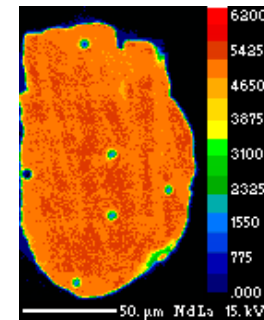
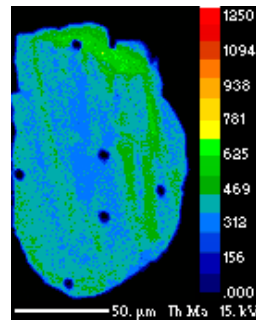
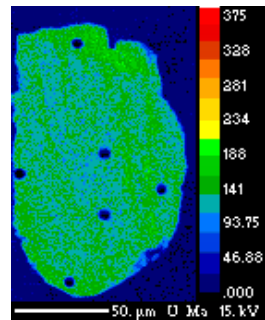
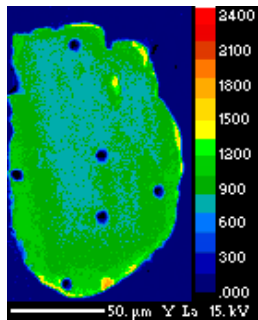
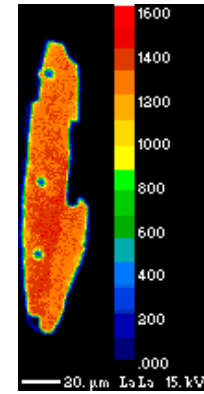
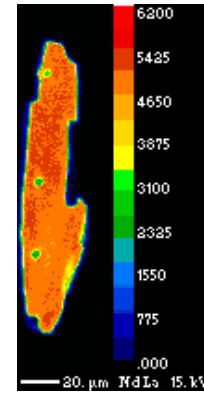
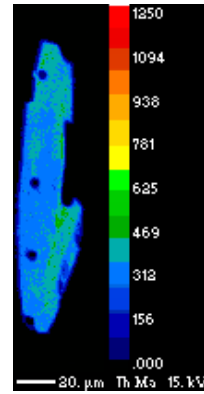
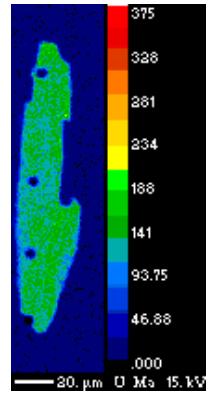
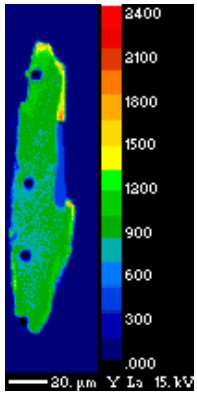




Table DR1. U/Th-Pb isotopic ratios and REE concentrations (ppm). Sample region, dome, name, long., lat., rock type, and mineral assemblage are given above each. U/Th-Pb ratios are uncorrected for common Pb and REE are un-normalized. REE Tb, Ho, Tm, and Lu were not measured for north Himalayan samples. When not measured, elements were log linear interpolated for REE spider plots.

analysis	isotopic ratios				rare-earth element concentrations (ppm)													
	$\frac{^{208}\text{Pb}}{^{232}\text{Th}}$	$\pm 2\sigma$	$\frac{^{206}\text{Pb}}{^{238}\text{U}}$	$\pm 2\sigma$	La	Ce	Pr	Nd	Sm	Eu	Gd	Tb	Dy	Ho	Er	Tm	Yb	Lu
	Pamir	Yazgulom	6906a3	71° 29.8'	58' 5.88"	semipelite	gt st											
1	0.001070	0.000021	0.003433	0.000059	4.3E+4	9.8E+4	1.2E+4	4.1E+4	7.4E+3	4.1E+2	5.7E+3	5.0E+2	2.1E+3	1.7E+2	1.5E+2	6.3E+0	6.9E+0	1.0E-1
2	0.001093	0.000014	0.003472	0.000042	5.2E+4	1.2E+5	1.4E+4	5.9E+4	9.9E+3	4.4E+2	6.4E+3	5.7E+2	2.4E+3	1.9E+2	1.9E+2	8.1E+0	6.4E+0	2.2E-1
3	0.001106	0.000019	0.003487	0.000056	5.4E+4	1.1E+5	1.5E+4	4.8E+4	9.2E+3	4.3E+2	6.0E+3	5.7E+2	2.4E+3	1.9E+2	1.7E+2	6.7E+0	6.8E+0	1.4E-1
4	0.001128	0.000017	0.003579	0.000055	5.1E+4	1.2E+5	1.4E+4	4.7E+4	5.3E+3	4.5E+2	5.9E+3	5.6E+2	2.0E+3	1.6E+2	1.4E+2	6.8E+0	8.0E+0	2.1E-1
6	0.001103	0.000023	0.003549	0.000082	3.2E+4	6.8E+4	8.5E+3	2.9E+4	2.7E+3	1.8E+2	3.2E+3	2.3E+2	8.7E+2	6.8E+1	7.3E+1	2.9E+0	4.8E+0	1.5E-1
8	0.001094	0.000017	0.003405	0.000051	4.9E+4	1.1E+5	1.4E+4	5.2E+4	9.7E+3	4.4E+2	6.2E+3	6.0E+2	2.6E+3	2.1E+2	2.0E+2	8.0E+0	7.9E+0	1.4E-1
9	0.001073	0.000018	0.003403	0.000056	6.3E+4	1.3E+5	1.5E+4	5.7E+4	9.3E+3	5.3E+2	7.4E+3	7.1E+2	3.2E+3	2.9E+2	2.6E+2	1.3E+1	1.6E+1	2.0E-1
10	0.001078	0.000017	0.003444	0.000047	5.8E+4	1.3E+5	1.7E+4	6.0E+4	1.4E+4	4.4E+2	7.8E+3	7.5E+2	3.5E+3	3.2E+2	3.3E+2	1.6E+1	2.0E+1	3.4E-1
11	0.001087	0.000014	0.003401	0.000042	5.5E+4	1.3E+5	1.8E+4	5.7E+4	8.2E+3	5.1E+2	6.9E+3	6.8E+2	3.0E+3	2.7E+2	2.3E+2	1.0E+1	9.6E+0	1.5E-1
12	0.001044	0.000013	0.003433	0.000040	5.9E+4	1.3E+5	1.7E+4	5.7E+4	8.2E+3	3.4E+2	6.6E+3	5.5E+2	2.3E+3	2.1E+2	2.2E+2	1.4E+1	1.4E+1	2.6E-1
13	0.001054	0.000015	0.003441	0.000053	6.6E+4	1.2E+5	1.6E+4	6.5E+4	1.3E+4	3.1E+2	6.1E+3	4.5E+2	1.8E+3	1.6E+2	1.7E+2	9.6E+0	1.5E+1	2.4E-1
14	0.001060	0.000015	0.003471	0.000054	5.8E+4	1.2E+5	1.4E+4	5.6E+4	7.4E+3	2.3E+2	4.4E+3	3.0E+2	9.7E+2	8.0E+1	7.9E+1	4.4E+0	6.4E+0	8.7E-2
15	0.001081	0.000012	0.003372	0.000037	5.4E+4	1.3E+5	1.7E+4	5.4E+4	8.3E+3	3.9E+2	7.0E+3	6.8E+2	3.1E+3	3.2E+2	3.4E+2	1.6E+1	2.0E+1	3.1E-1
17	0.001070	0.000022	0.003363	0.000072	7.0E+4	1.4E+5	1.9E+4	6.4E+4	1.3E+4	5.4E+2	8.7E+3	8.6E+2	3.6E+3	3.4E+2	3.5E+2	1.6E+1	1.6E+1	2.7E-1
18	0.001073	0.000015	0.003408	0.000048	6.9E+4	1.5E+5	2.0E+4	6.4E+4	1.3E+4	5.4E+2	7.7E+3	7.7E+2	3.3E+3	2.9E+2	2.7E+2	1.2E+1	1.1E+1	2.1E-1
19	0.001114	0.000017	0.003372	0.000045	6.0E+4	1.4E+5	1.9E+4	7.7E+4	9.6E+3	4.0E+2	7.8E+3	6.8E+2	2.9E+3	2.7E+2	3.1E+2	1.5E+1	1.8E+1	3.8E-1
20	0.001074	0.000028	0.003383	0.000088	5.4E+4	1.3E+5	1.7E+4	6.9E+4	1.1E+4	4.6E+2	8.1E+3	6.8E+2	3.4E+3	3.5E+2	3.7E+2	1.9E+1	2.0E+1	3.4E-1
21	0.001086	0.000030	0.003477	0.000079	3.8E+4	8.7E+4	1.2E+4	4.4E+4	4.0E+3	2.1E+2	4.3E+3	3.5E+2	1.4E+3	1.3E+2	1.4E+2	7.8E+0	8.5E+0	2.1E-1
22	0.001093	0.000017	0.003448	0.000057	5.2E+4	1.2E+5	1.7E+4	5.2E+4	1.3E+4	3.0E+2	6.3E+3	4.8E+2	2.0E+3	1.9E+2	2.0E+2	1.1E+1	1.5E+1	2.8E-1
24	0.001121	0.000014	0.003469	0.000047	5.6E+4	1.2E+5	1.6E+4	5.4E+4	9.3E+3	3.9E+2	6.9E+3	7.0E+2	3.1E+3	3.0E+2	3.2E+2	1.8E+1	1.8E+1	3.1E-1
25	0.001105	0.000015	0.003427	0.000046	5.2E+4	1.1E+5	1.5E+4	5.6E+4	1.0E+4	3.9E+2	6.5E+3	6.6E+2	3.1E+3	3.0E+2	3.2E+2	1.7E+1	2.0E+1	2.9E-1
26	0.001125	0.000023	0.003477	0.000069	5.8E+4	1.2E+5	1.7E+4	5.5E+4	5.9E+3	4.3E+2	6.7E+3	6.9E+2	3.1E+3	2.8E+2	2.7E+2	1.4E+1	1.2E+1	2.3E-1
27	0.001094	0.000021	0.003437	0.000072	5.1E+4	1.3E+5	1.5E+4	4.6E+4	1.1E+4	3.6E+2	6.7E+3	6.4E+2	3.0E+3	2.8E+2	3.0E+2	1.6E+1	2.0E+1	2.1E-1
28	0.001095	0.000018	0.003451	0.000057	5.1E+4	1.1E+5	1.6E+4	6.1E+4	1.2E+4	4.1E+2	7.3E+3	7.1E+2	3.1E+3	3.1E+2	3.1E+2	1.6E+1	1.6E+1	1.7E-1
29	0.001112	0.000024	0.003462	0.000079	4.9E+4	1.2E+5	1.6E+4	6.5E+4	8.0E+3	4.0E+2	6.9E+3	7.0E+2	3.2E+3	3.0E+2	3.2E+2	1.7E+1	2.0E+1	2.9E-1
30	0.001102	0.000022	0.003427	0.000059	6.3E+4	1.2E+5	1.5E+4	6.2E+4	1.5E+4	4.7E+2	6.5E+3	6.6E+2	2.9E+3	2.7E+2	2.2E+2	9.5E+0	1.0E+1	1.6E-1
32	0.001102	0.000023	0.003404	0.000068	5.1E+4	1.2E+5	1.6E+4	5.5E+4	6.8E+3	4.6E+2	6.4E+3	6.3E+2	2.8E+3	2.6E+2	2.4E+2	1.2E+1	1.1E+1	2.2E-1
33	0.001111	0.000019	0.003474	0.000054	6.9E+4	1.5E+5	1.9E+4	5.9E+4	8.4E+3	5.1E+2	7.7E+3	7.8E+2	3.4E+3	3.0E+2	2.6E+2	1.2E+1	1.1E+1	1.7E-1
34	0.001151	0.000017	0.003489	0.000053	5.9E+4	1.1E+5	1.5E+4	5.9E+4	6.0E+3	3.9E+2	6.6E+3	6.7E+2	3.0E+3	2.8E+2	2.9E+2	1.7E+1	1.7E+1	2.6E-1
35	0.001083	0.000015	0.003486	0.000051	6.3E+4	1.1E+5	1.4E+4	5.4E+4	5.2E+3	3.6E+2	7.2E+3	6.4E+2	2.8E+3	2.8E+2	2.8E+2	1.6E+1	1.9E+1	3.0E-1
36	0.001154	0.000019	0.003491	0.000054	4.5E+4	1.1E+5	1.2E+4	4.6E+4	9.4E+3	3.2E+2	5.9E+3	5.7E+2	2.5E+3	2.3E+2	2.7E+2	1.5E+1	1.7E+1	2.7E-1
37	0.001144	0.000018	0.003480	0.000052	4.9E+4	1.0E+5	1.5E+4	4.9E+4	8.5E+3	3.9E+2	6.3E+3	5.9E+2	2.7E+3	2.7E+2	2.8E+2	1.4E+1	1.5E+1	1.7E-1
39	0.001117	0.000024	0.003488	0.000069	2.8E+4	5.9E+4	7.5E+3	1.7E+4	2.9E+3	1.3E+2	2.4E+3	1.8E+2	6.1E+2	5.5E+1	5.8E+1	2.3E+0	4.1E+0	6.2E-2
40	0.001126	0.000023	0.003528	0.000065	4.9E+4	1.0E+5	1.4E+4	4.1E+4	3.9E+3	2.5E+2	4.6E+3	3.7E+2	1.3E+3	1.3E+2	1.4E+2	7.4E+0	9.1E+0	1.8E-1
41	0.001145	0.000028	0.003526	0.000076	3.8E+4	9.5E+4	1.2E+4	4.6E+4	5.6E+3	3.4E+2	5.5E+3	5.3E+2	2.4E+3	2.4E+2	2.4E+2	1.3E+1	1.4E+1	2.8E-1
42	0.001109	0.000026	0.003471	0.000078	4.3E+4	9.3E+4	1.2E+4	4.0E+4	6.1E+3	3.3E+2	5.5E+3	4.8E+2	2.4E+3	2.2E+2	2.3E+2	1.3E+1	1.1E+1	1.7E-1
43	0.001086	0.000019	0.003433	0.000055	5.1E+4	1.1E+5	1.4E+4	4.6E+4	8.8E+3	4.2E+2	6.4E+3	6.0E+2	2.7E+3	2.5E+2	2.5E+2	1.3E+1	1.3E+1	1.9E-1
44	0.001072	0.000020	0.003395	0.000056	3.2E+4	8.0E+4	9.9E+3	3.9E+4	2.6E+3	2.1E+2	3.9E+3	3.0E+2	1.1E+3	1.0E+2	1.1E+2	6.4E+0	9.0E+0	1.8E-1
45	0.001060	0.000026	0.003500	0.000100	2.7E+4	6.3E+4	8.0E+3	2.6E+4	0.0E+0	1.6E+2	2.5E+3	2.0E+2	7.2E+2	6.4E+1	5.7E+1	5.5E+0	4.4E+0	9.6E-2
	Pamir	Sarez	0902z2	72°39.8'	38°24.4'	pelite	bt grt st sil											
1	0.001049	0.000042	0.003140	0.000130	4.3E+4	6.9E+4	8.9E+3	3.0E+4	5.3E+3	5.4E+2	4.3E+3	4.5E+2	2.1E+3	1.9E+2	2.6E+2	1.9E+1	4.1E+1	1.3E+0
6	0.000993	0.000022	0.003120	0.000046	5.2E+4	8.9E+4	8.8E+3	3.1E+4	6.2E+3	6.1E+2	5.7E+3	6.7E+2	3.1E+3	3.2E+2	4.5E+2	3.8E+1	7.2E+1	1.8E+0
7	0.000956	0.000016	0.002924	0.000051	4.3E+4	7.2E+4	9.5E+3	3.6E+4	4.8E+3	6.2E+2	4.8E+3	6.2E+2	3.2E+3	3.5E+2	4.3E+2	3.6E+1	6.9E+1	2.0E+0
8	0.001036	0.000030	0.003230	0.000100	4.8E+4	1.0E+5	9.7E+3	4.2E+4	9.5E+3	8.4E+2	7.1E+3	8.6E+2	3.8E+3	3.4E+2	4.3E+2	3.7E+1	6.6E+1	2.1E+0
9	0.000987	0.000019	0.002993	0.000051	4.5E+4	8.8E+4	1.3E+4	4.3E+4	6.0E+3	6.6E+2	4.1E+3	6.4E+2	3.5E+3	3.7E+2	5.6E+2	4.4E+1	8.1E+1	2.1E+0

11	0.000981	0.000028	0.002990	0.000100	3.9E+4	9.4E+4	9.2E+3	3.6E+4	7.0E+3	7.6E+2	4.9E+3	6.4E+2	4.7E+3	3.6E+2	5.1E+2	3.9E+1	7.5E+1	2.3E+0
12	0.000992	0.000027	0.003130	0.000078	3.8E+4	8.2E+4	9.3E+3	3.3E+4	4.8E+3	6.3E+2	4.3E+3	6.5E+2	2.0E+3	3.3E+2	4.6E+2	3.0E+1	5.7E+1	1.6E+0
15	0.000963	0.000027	0.003007	0.000077	4.2E+4	8.5E+4	7.9E+3	3.8E+4	5.1E+3	6.5E+2	5.5E+3	6.2E+2	2.3E+3	3.1E+2	4.3E+2	3.5E+1	6.8E+1	2.0E+0

	Pamir	Sarez	0903z1	72°32.7'	38°24.3'	pelite	bt grt st sil												
1	0.000857	0.000026	0.002990	0.000110	2.4E+4	4.7E+4	6.1E+3	1.9E+4	3.5E+3	3.0E+2	3.3E+3	3.4E+2	1.2E+3	1.1E+2	1.1E+2	7.5E+0	8.8E+0	1.4E-1	
2	0.000848	0.000023	0.002850	0.000070	2.8E+4	4.8E+4	5.7E+3	2.2E+4	4.1E+3	2.9E+2	3.7E+3	3.5E+2	1.4E+3	1.1E+2	1.1E+2	7.3E+0	7.7E+0	1.2E-1	
3	0.000863	0.000020	0.002907	0.000080	2.7E+4	5.0E+4	6.8E+3	2.1E+4	4.0E+3	3.2E+2	3.2E+3	3.3E+2	1.5E+3	1.3E+2	1.3E+2	8.6E+0	1.1E+1	1.9E-1	
4	0.000836	0.000017	0.002835	0.000070	2.7E+4	5.6E+4	5.8E+3	2.4E+4	4.1E+3	3.2E+2	3.5E+3	3.6E+2	1.5E+3	1.2E+2	1.4E+2	8.3E+0	1.1E+1	1.7E-1	
5	0.000860	0.000022	0.002880	0.000070	2.6E+4	5.1E+4	5.4E+3	2.0E+4	2.7E+3	2.6E+2	3.0E+3	2.9E+2	1.4E+3	1.4E+2	2.0E+2	1.5E+1	2.4E+1	5.3E-1	
7	0.000828	0.000025	0.002820	0.000100	2.2E+4	4.1E+4	4.9E+3	2.4E+4	3.1E+3	2.6E+2	2.5E+3	2.2E+2	1.0E+3	1.3E+2	1.6E+2	1.5E+1	2.1E+1	4.9E-1	
9	0.000829	0.000023	0.002853	0.000080	4.0E+4	8.6E+4	9.7E+3	3.3E+4	6.5E+3	4.7E+2	5.3E+3	5.7E+2	2.3E+3	2.4E+2	2.4E+2	1.5E+1	2.0E+1	2.9E-1	
10	0.000895	0.000019	0.002844	0.000080	4.4E+4	8.5E+4	8.9E+3	3.7E+4	6.1E+3	4.6E+2	6.0E+3	8.1E+2	2.8E+3	2.5E+2	2.5E+2	1.7E+1	2.1E+1	3.1E-1	
11	0.000897	0.000020	0.002875	0.000080	4.4E+4	8.1E+4	8.7E+3	4.1E+4	7.8E+3	4.9E+2	6.6E+3	8.4E+2	3.2E+3	3.0E+2	3.5E+2	2.2E+1	3.0E+1	5.1E-1	
12	0.000899	0.000029	0.002880	0.000090	4.6E+4	8.2E+4	8.4E+3	3.7E+4	7.2E+3	5.0E+2	8.4E+3	7.2E+2	3.2E+3	2.9E+2	3.2E+2	2.1E+1	2.4E+1	4.6E-1	
13	0.000880	0.000026	0.002796	0.000090	5.2E+4	1.0E+5	1.0E+4	4.8E+4	7.6E+3	5.9E+2	7.9E+3	7.4E+2	3.1E+3	3.1E+2	2.8E+2	1.5E+1	2.2E+1	2.5E-1	
14	0.000892	0.000018	0.002873	0.000050	2.4E+4	4.9E+4	5.3E+3	2.1E+4	2.3E+3	3.2E+2	2.0E+3	3.1E+2	1.4E+3	1.2E+2	1.5E+2	9.7E+0	1.3E+1	2.5E-1	
16	0.000880	0.000019	0.002873	0.000070	5.3E+4	1.1E+5	1.3E+4	4.2E+4	7.9E+3	4.3E+2	6.0E+3	6.8E+2	2.9E+3	3.7E+2	4.7E+2	3.8E+1	6.8E+1	1.6E+0	
18	0.000881	0.000029	0.002820	0.000100	4.8E+4	1.0E+5	1.1E+4	4.5E+4	6.9E+3	3.6E+2	5.2E+3	5.5E+2	3.0E+3	3.1E+2	4.1E+2	3.6E+1	6.3E+1	1.4E+0	
20	0.000912	0.000025	0.003034	0.000090	2.8E+4	6.7E+4	7.6E+3	2.6E+4	5.9E+3	3.4E+2	4.0E+3	4.9E+2	1.5E+3	1.9E+2	1.9E+2	1.4E+1	2.2E+1	4.1E-1	
21	0.000908	0.000061	0.002840	0.000220	2.1E+4	5.4E+4	6.7E+3	2.7E+4	3.4E+3	2.5E+2	2.5E+3	2.5E+2	9.3E+2	1.2E+2	1.1E+2	6.4E+0	7.8E+0	1.3E-1	
22	0.000849	0.000023	0.002685	0.000090	2.7E+4	5.4E+4	5.7E+3	2.5E+4	4.3E+3	3.3E+2	3.0E+3	2.6E+2	1.2E+3	1.5E+2	1.5E+2	1.0E+1	1.0E+1	1.8E-1	
23	0.000916	0.000054	0.002860	0.000210	3.5E+4	7.7E+4	9.1E+3	3.3E+4	4.9E+3	4.5E+2	4.3E+3	5.4E+2	1.9E+3	2.2E+2	2.4E+2	1.6E+1	2.0E+1	4.1E-1	
24	0.000883	0.000036	0.002820	0.000110	3.8E+4	7.9E+4	9.8E+3	4.0E+4	5.3E+3	4.7E+2	5.1E+3	5.2E+2	2.5E+3	1.8E+2	2.0E+2	1.3E+1	1.6E+1	2.7E-1	
25	0.000874	0.000030	0.002870	0.000120	4.0E+4	8.3E+4	1.1E+4	4.3E+4	5.4E+3	4.5E+2	5.5E+3	4.1E+2	2.4E+3	2.1E+2	2.2E+2	1.4E+1	1.6E+1	2.9E-1	
26	0.000882	0.000033	0.002673	0.000090	3.1E+4	7.5E+4	8.6E+3	3.4E+4	4.9E+3	4.6E+2	4.7E+3	5.0E+2	1.7E+3	2.0E+2	2.3E+2	1.7E+1	1.9E+1	4.4E-1	
27	0.000921	0.000034	0.002810	0.000110	3.4E+4	8.2E+4	9.5E+3	3.8E+4	6.6E+3	4.0E+2	4.8E+3	5.3E+2	2.0E+3	2.0E+2	1.8E+2	1.2E+1	1.4E+1	2.0E-1	
29	0.000896	0.000053	0.002880	0.000180	3.6E+4	8.0E+4	7.9E+3	3.5E+4	6.3E+3	4.8E+2	5.6E+3	4.4E+2	1.7E+3	2.0E+2	2.4E+2	1.5E+1	1.8E+1	4.4E-1	
30	0.000901	0.000039	0.002860	0.000170	4.0E+4	8.5E+4	1.0E+4	3.4E+4	7.3E+3	4.8E+2	6.3E+3	6.0E+2	2.5E+3	2.2E+2	2.6E+2	1.7E+1	1.8E+1	2.7E-1	
31	0.000915	0.000019	0.002862	0.000060	4.0E+4	7.2E+4	1.0E+4	3.5E+4	6.3E+3	4.3E+2	4.6E+3	6.1E+2	2.4E+3	2.5E+2	2.8E+2	2.0E+1	1.8E+1	3.1E-1	
32	0.000899	0.000033	0.002890	0.000120	3.9E+4	7.3E+4	1.1E+4	3.7E+4	6.3E+3	5.0E+2	4.5E+3	4.5E+2	2.3E+3	3.0E+2	3.3E+2	2.9E+1	4.3E+1	7.8E-1	
33	0.000946	0.000033	0.003030	0.000110	3.7E+4	1.0E+5	1.2E+4	4.0E+4	6.7E+3	4.0E+2	4.9E+3	4.8E+2	2.9E+3	3.2E+2	4.6E+2	4.3E+1	4.9E+1	1.1E+0	
34	0.000927	0.000022	0.003014	0.000070	3.8E+4	8.7E+4	1.0E+4	3.2E+4	7.1E+3	4.6E+2	5.5E+3	5.4E+2	2.4E+3	3.2E+2	4.0E+2	3.4E+1	3.9E+1	7.2E-1	
35	0.000939	0.000026	0.002905	0.000080	3.6E+4	8.0E+4	8.5E+3	3.1E+4	6.0E+3	4.0E+2	6.5E+3	6.4E+2	2.6E+3	4.1E+2	5.8E+2	4.5E+1	6.2E+1	1.3E+0	
36	0.000915	0.000023	0.002899	0.000070	3.4E+4	8.4E+4	9.9E+3	3.1E+4	4.3E+3	4.2E+2	4.4E+3	5.8E+2	2.4E+3	2.8E+2	3.2E+2	2.3E+1	2.6E+1	6.1E-1	

	Pamir	Sarez	0903z3	72°32.7'	38°24.3'	pelite	bt grt st ± sil												
1	0.001005	0.000020	0.003275	0.000056	6.1E+4	1.3E+5	1.6E+4	6.2E+4	1.2E+4	7.4E+2	1.3E+4	1.5E+3	5.1E+3	4.3E+2	4.1E+2	2.3E+1	3.4E+1	8.1E-1	
2	0.000994	0.000015	0.003245	0.000038	4.1E+4	9.8E+4	1.2E+4	3.7E+4	7.8E+3	5.3E+2	8.8E+3	8.9E+2	2.9E+3	2.4E+2	2.4E+2	1.3E+1	2.0E+1	3.9E-1	
3	0.000998	0.000013	0.003231	0.000044	6.8E+4	1.3E+5	1.9E+4	6.0E+4	1.6E+4	8.7E+2	1.1E+4	7.9E+2	2.5E+3	1.9E+2	1.7E+2	7.9E+0	1.4E+1	2.3E-1	
4	0.000948	0.000014	0.003062	0.000044	7.3E+4	1.4E+5	1.8E+4	6.4E+4	1.2E+4	1.0E+3	9.5E+3	7.1E+2	1.8E+3	1.4E+2	1.6E+2	1.0E+1	1.9E+1	5.8E-1	
5	0.000985	0.000012	0.003302	0.000040	6.7E+4	1.3E+5	1.7E+4	5.6E+4	1.5E+4	6.5E+2	2.0E+4	1.8E+3	5.8E+3	4.8E+2	4.6E+2	2.5E+1	3.6E+1	1.0E+0	
6	0.001004	0.000022	0.003246	0.000068	8.8E+4	1.4E+5	1.8E+4	6.5E+4	1.3E+4	9.0E+2	7.7E+3	5.3E+2	1.4E+3	8.0E+1	7.0E+1	3.7E+0	5.7E+0	8.0E-2	
7	0.000991	0.000018	0.003245	0.000078	7.6E+4	1.4E+5	1.8E+4	6.1E+4	1.4E+4	1.0E+3	1.3E+4	1.9E+3	5.9E+3	4.1E+2	4.8E+2	2.7E+1	4.3E+1	9.4E-1	
8	0.001036	0.000024	0.003480	0.000088	6.9E+4	1.5E+5	1.9E+4	5.3E+4	1.5E+4	6.9E+2	1.9E+4	1.6E+3	5.4E+3	4.5E+2	4.6E+2	2.1E+1	3.8E+1	9.1E-1	
15	0.001007	0.000025	0.003346	0.000083	4.2E+4	8.4E+4	8.8E+3	3.8E+4	7.1E+3	5.2E+2	3.5E+3	3.1E+2	7.8E+2	4.7E+1	4.4E+1	2.2E+0	3.3E+0	6.0E-2	
16	0.000996	0.000025	0.003368	0.000078	5.1E+4	9.2E+4	9.9E+3	3.4E+4	6.7E+3	3.5E+2	5.6E+3	3.5E+2	6.4E+2	5.6E+1	5.8E+1	3.6E+0	3.9E+0	1.0E-1	
17	0.000953	0.000036	0.003240	0.000120	4.1E+4	8.0E+4	9.3E+3	3.1E+4	6.0E+3	5.1E+2	4.5E+3	3.1E+2	8.8E+2	5.1E+1	4.6E+1	2.5E+0	4.2E+0	9.8E-2	
18	0.000989	0.000025	0.003225	0.000091	4.0E+4	7.5E+4	1.1E+4	3.6E+4	7.5E+3	5.2E+2	8.6E+3	6.9E+2	2.1E+3	1.8E+2	2.1E+2	1.2E+1	1.7E+1	4.3E-1	
21	0.000969	0.000028	0.003276	0.000091	4.0E+4	8.4E+4	9.8E+3	3.8E+4	6.4E+3	5.2E+2	5.7E+3	2.9E+2	8.2E+2	5.5E+1	4.6E+1	1.7E+0	4.2E+0	6.8E-2	
22	0.000987	0.000022	0.003234	0.000065	3.9E+4	8.1E+4	1.0E+4	3.8E+4	8.5E+3	6.0E+2	8.2E+3	7.5E+2	1.9E+3	1.8E+2	2.1E+2	1.2E+1	1.9E+1	4.7E-1	
23	0.000985	0.000024	0.003345	0.000074	4.2E+4	7.8E+4	1.0E+4	3.5E+4	6.8E+3	3.7E+2	8.0E+3	6.1E+2	2.2E+3	1.4E+2	1.6E+2	8.2E+0	1.1E+1	2.8E-1	
24	0.000891	0.000022	0.002928	0.000066	4.7E+4	8.5E+4	9.0E+3	3.2E+4	8.0E+3	4.9E+2	5.5E+3	5.0E+2	9.0E+2	6.3E+1	5.6E+1	3.3E+0	6.4E+0	1.8E-1	
25	0.000985	0.000026	0.003296	0.000080	4.1E+4	9.4E+4	1.0E+4	4.4E+4	8.8E+3	9.5E+2	9.2E+3	7.4E+2	2.2E+3	1.7E+2	2.0E+2	1.2E+1	1.6E+1	3.9E-1	
26	0.000929	0.000019	0.002986	0.000067	4.1E+4	9.8E+4	8.7E+3	3.7E+4	6.8E+3	2.6E+2	6.3E+3	2.4E+2	1.3E+3	1.0E+2	1.4E+2	1.0E+1	1.8E+1	7.3E-1	

27	0.000983	0.000022	0.003196	0.000076	4.1E+4	9.5E+4	1.1E+4	3.6E+4	5.7E+3	5.8E+2	6.4E+3	4.8E+2	1.8E+3	1.1E+2	1.2E+2	8.6E+0	1.4E+1	4.4E-1
28	0.000971	0.000028	0.003280	0.000100	3.6E+4	7.7E+4	9.1E+3	3.1E+4	9.3E+3	4.6E+2	1.2E+4	8.9E+2	2.4E+3	2.3E+2	2.4E+2	1.2E+1	1.4E+1	4.1E-1
29	0.000893	0.000022	0.002973	0.000052	4.5E+4	8.8E+4	1.0E+4	3.8E+4	8.0E+3	6.3E+2	5.6E+3	3.5E+2	3.4E+2	5.1E+1	4.8E+1	3.6E+0	4.2E+0	1.6E-1
30	0.000983	0.000021	0.003263	0.000073	4.8E+4	1.1E+5	1.4E+4	4.6E+4	9.5E+3	9.5E+2	9.7E+3	8.5E+2	1.9E+3	1.6E+2	1.6E+2	1.2E+1	1.4E+1	5.0E-1
31	0.000941	0.000025	0.003093	0.000074	4.5E+4	9.4E+4	1.1E+4	3.8E+4	7.9E+3	5.9E+2	5.7E+3	2.2E+2	5.5E+2	3.6E+1	3.5E+1	2.3E+0	4.0E+0	1.1E-1
32	0.000999	0.000024	0.003297	0.000072	4.0E+4	8.4E+4	9.5E+3	3.6E+4	8.9E+3	6.1E+2	5.3E+3	1.7E+2	8.5E+2	4.1E+1	3.6E+1	1.5E+0	2.1E+0	4.8E-2
33	0.000988	0.000028	0.003350	0.000100	3.7E+4	9.1E+4	1.0E+4	3.0E+4	9.4E+3	4.6E+2	7.3E+3	7.0E+2	2.1E+3	1.6E+2	2.2E+2	1.1E+1	1.8E+1	4.1E-1
35	0.000981	0.000020	0.003269	0.000068	6.3E+4	1.2E+5	1.4E+4	5.1E+4	1.2E+4	9.1E+2	1.1E+4	7.1E+2	2.9E+3	1.5E+2	1.4E+2	8.4E+0	1.3E+1	2.8E-1
36	0.000911	0.000041	0.002910	0.000130	4.8E+4	8.8E+4	1.1E+4	3.9E+4	6.8E+3	6.1E+2	7.8E+3	3.8E+2	9.5E+2	7.3E+1	6.3E+1	4.8E+0	7.8E+0	2.8E-1
37	0.000996	0.000042	0.003310	0.000130	3.9E+4	8.0E+4	9.3E+3	2.9E+4	5.8E+3	3.3E+2	4.4E+3	5.5E+2	1.7E+3	1.9E+2	2.2E+2	1.7E+1	2.7E+1	7.2E-1
38	0.000949	0.000035	0.003090	0.000100	4.5E+4	7.9E+4	8.7E+3	3.2E+4	7.6E+3	6.5E+2	4.7E+3	4.8E+2	1.9E+3	1.4E+2	1.7E+2	1.4E+1	2.6E+1	6.5E-1
39	0.000971	0.000036	0.003108	0.000099	4.6E+4	7.4E+4	9.0E+3	2.9E+4	4.7E+3	4.2E+2	5.8E+3	4.7E+2	1.7E+3	1.7E+2	1.8E+2	1.3E+1	1.8E+1	4.9E-1
40	0.000959	0.000023	0.003120	0.000084	6.7E+4	1.2E+5	1.2E+4	4.9E+4	7.1E+3	7.3E+2	9.6E+3	4.6E+2	1.5E+3	1.2E+2	1.4E+2	8.5E+0	1.3E+1	1.8E-1
41	0.000902	0.000021	0.002899	0.000067	5.7E+4	1.0E+5	1.2E+4	4.0E+4	8.5E+3	8.1E+2	9.5E+3	3.8E+2	2.2E+3	1.4E+2	2.0E+2	1.3E+1	3.3E+1	1.1E+0
42	0.000940	0.000035	0.003060	0.000100	6.2E+4	1.1E+5	1.3E+4	4.6E+4	8.3E+3	6.4E+2	7.4E+3	3.6E+2	8.5E+2	7.6E+1	6.2E+1	2.8E+0	4.4E+0	1.2E-1
43	0.000962	0.000026	0.003203	0.000074	6.0E+4	1.2E+5	1.5E+4	4.8E+4	9.4E+3	7.0E+2	6.9E+3	6.1E+2	1.9E+3	8.1E+1	6.5E+1	3.0E+0	5.0E+0	6.2E-2
44	0.000968	0.000023	0.003106	0.000069	6.2E+4	1.1E+5	1.3E+4	4.7E+4	9.6E+3	9.5E+2	6.7E+3	6.4E+2	1.6E+3	1.2E+2	1.0E+2	7.0E+0	1.8E+1	4.1E-1

	Pamir	Sarez	0903z4	72°32.7'	38°24.3'	pelite	bt	grt	st										
1	0.000971	0.000013	0.003153	0.000040	5.4E+4	1.1E+5	1.3E+4	5.1E+4	8.5E+3	1.8E+3	5.1E+3	3.1E+2	4.8E+2	1.6E+1	8.1E+0	2.3E-1	7.8E-1	2.2E-2	
2	0.000957	0.000013	0.003114	0.000042	5.4E+4	1.1E+5	1.3E+4	5.3E+4	7.9E+3	1.8E+3	5.0E+3	3.0E+2	4.9E+2	1.5E+1	8.3E+0	3.5E-1	2.6E-1	7.8E-3	
3	0.000961	0.000013	0.003144	0.000046	5.5E+4	1.2E+5	1.4E+4	5.0E+4	9.3E+3	1.7E+3	5.1E+3	3.4E+2	5.5E+2	1.7E+1	7.4E+0	2.4E-1	3.7E-1	8.1E-3	
4	0.000917	0.000021	0.002933	0.000063	4.8E+4	1.2E+5	1.3E+4	4.9E+4	9.3E+3	1.5E+3	5.8E+3	3.9E+2	1.2E+3	8.3E+1	8.5E+1	6.9E+0	1.3E+1	4.5E-1	
5	0.000986	0.000014	0.003185	0.000042	5.4E+4	1.2E+5	1.5E+4	5.4E+4	1.1E+4	1.5E+3	8.0E+3	5.3E+2	9.2E+2	2.8E+1	1.3E+1	3.1E-1	6.1E-1	4.8E-3	
6	0.001010	0.000012	0.003201	0.000036	4.9E+4	1.1E+5	1.4E+4	5.2E+4	8.6E+3	1.2E+3	7.3E+3	4.5E+2	8.5E+2	2.6E+1	1.2E+1	4.0E-1	2.2E-1	6.0E-3	
7	0.000970	0.000012	0.003066	0.000037	3.6E+4	8.2E+4	9.7E+3	3.4E+4	6.3E+3	9.2E+2	3.3E+3	2.4E+2	4.4E+2	1.7E+1	1.1E+1	7.8E-1	1.1E+0	4.1E-2	
8	0.000969	0.000013	0.003109	0.000042	5.4E+4	1.1E+5	1.4E+4	4.9E+4	8.4E+3	1.2E+3	5.1E+3	3.0E+2	4.6E+2	1.4E+1	6.9E+0	2.6E-1	5.0E-1	0.0E+0	
9	0.000933	0.000013	0.003102	0.000045	3.9E+4	8.6E+4	9.2E+3	3.5E+4	6.9E+3	7.2E+2	4.1E+3	2.2E+2	3.4E+2	1.2E+1	6.4E+0	2.0E-1	1.7E-1	2.1E-2	
10	0.000995	0.000013	0.003204	0.000037	5.1E+4	1.1E+5	1.4E+4	5.4E+4	1.0E+4	1.1E+3	9.4E+3	6.2E+2	1.2E+3	4.0E+1	1.7E+1	2.8E-1	4.4E-1	5.3E-3	
11	0.000946	0.000015	0.003034	0.000049	3.8E+4	8.8E+4	9.3E+3	3.3E+4	6.5E+3	7.5E+2	4.5E+3	2.1E+2	3.2E+2	1.2E+1	5.1E+0	1.4E-1	0.0E+0	9.0E-3	
12	0.000963	0.000013	0.003156	0.000047	4.7E+4	1.1E+5	1.3E+4	4.8E+4	7.8E+3	8.5E+2	5.3E+3	3.1E+2	4.7E+2	1.5E+1	6.8E+0	2.5E-1	0.0E+0	1.5E-2	
13	0.000944	0.000013	0.003066	0.000048	5.0E+4	1.2E+5	1.3E+4	5.1E+4	8.4E+3	8.7E+2	4.7E+3	3.4E+2	7.6E+2	4.3E+1	4.4E+1	3.3E+0	5.6E+0	2.0E-1	
14	0.000979	0.000012	0.003179	0.000043	4.6E+4	1.1E+5	1.3E+4	4.7E+4	8.8E+3	8.1E+2	4.8E+3	2.9E+2	5.9E+2	1.6E+1	7.9E+0	2.8E-1	3.1E-1	6.4E-3	
15	0.000957	0.000017	0.003143	0.000058	4.9E+4	1.1E+5	1.3E+4	5.0E+4	9.1E+3	9.1E+2	5.0E+3	3.2E+2	4.9E+2	1.6E+1	6.4E+0	2.7E-1	1.3E-1	1.3E-2	
16	0.000950	0.000011	0.003120	0.000039	5.1E+4	1.1E+5	1.3E+4	4.7E+4	8.6E+3	9.0E+2	4.4E+3	2.7E+2	3.7E+2	1.4E+1	7.2E+0	3.6E-1	1.7E-1	2.7E-3	
17	0.000979	0.000015	0.003181	0.000049	4.9E+4	1.2E+5	1.3E+4	5.4E+4	9.3E+3	7.4E+2	7.7E+3	5.2E+2	8.4E+2	3.1E+1	1.2E+1	3.4E-1	2.9E-1	2.6E-2	
19	0.000981	0.000012	0.003157	0.000039	5.0E+4	1.2E+5	1.3E+4	5.0E+4	9.7E+3	8.3E+2	6.1E+3	3.6E+2	4.6E+2	1.8E+1	8.5E+0	2.7E-1	3.3E-1	1.9E-2	
20	0.000968	0.000014	0.003186	0.000045	5.1E+4	1.1E+5	1.3E+4	4.4E+4	8.4E+3	7.2E+2	5.2E+3	3.2E+2	5.1E+2	1.8E+1	9.9E+0	3.9E-1	6.6E-1	1.6E-2	
22	0.000909	0.000023	0.002882	0.000084	3.4E+4	7.8E+4	8.1E+3	3.4E+4	5.5E+3	5.0E+2	4.0E+3	3.1E+2	7.5E+2	5.5E+1	5.9E+1	4.4E+0	7.2E+0	3.0E-1	
23	0.000934	0.000014	0.003020	0.000049	5.7E+4	1.2E+5	1.4E+4	5.5E+4	9.1E+3	8.2E+2	6.5E+3	4.5E+2	1.1E+3	8.1E+1	9.1E+1	6.4E+0	1.4E+1	4.8E-1	
24	0.000984	0.000013	0.003139	0.000046	5.3E+4	1.3E+5	1.4E+4	5.3E+4	9.1E+3	7.2E+2	5.5E+3	3.3E+2	5.0E+2	1.8E+1	9.2E+0	1.0E-1	2.4E-1	7.3E-3	
25	0.000971	0.000017	0.003147	0.000050	5.5E+4	1.3E+5	1.4E+4	5.6E+4	8.9E+3	7.3E+2	7.1E+3	3.7E+2	4.9E+2	1.9E+1	8.8E+0	1.8E-1	4.8E-1	4.1E-3	
26	0.000970	0.000014	0.003147	0.000048	5.6E+4	1.2E+5	1.3E+4	5.4E+4	1.0E+4	8.0E+2	6.8E+3	3.3E+2	4.1E+2	1.8E+1	9.3E+0	2.0E-1	3.0E-1	6.7E-3	
27	0.000990	0.000013	0.003163	0.000039	5.9E+4	1.3E+5	1.5E+4	5.9E+4	9.1E+3	8.4E+2	6.6E+3	4.7E+2	8.9E+2	2.5E+1	1.1E+1	3.9E-1	2.2E-1	1.0E-2	
28	0.001000	0.000022	0.003207	0.000075	5.2E+4	1.2E+5	1.4E+4	5.2E+4	9.3E+3	7.1E+2	7.0E+3	4.4E+2	8.4E+2	2.3E+1	1.2E+1	3.0E-1	5.5E-1	1.5E-2	
29	0.001020	0.000013	0.003179	0.000046	5.4E+4	1.2E+5	1.4E+4	5.3E+4	9.7E+3	6.6E+2	6.3E+3	4.8E+2	5.0E+2	2.5E+1	1.1E+1	4.3E-1	5.7E-1	5.6E-3	
30	0.001016	0.000014	0.003171	0.000045	5.7E+4	1.3E+5	1.3E+4	5.4E+4	1.0E+4	5.9E+2	5.8E+3	3.7E+2	5.6E+2	1.9E+1	9.9E+0	4.8E-1	2.2E-1	0.0E+0	
31	0.001011	0.000017	0.003199	0.000053	5.3E+4	1.3E+5	1.4E+4	5.0E+4	8.7E+3	6.2E+2	6.9E+3	4.2E+2	6.5E+2	2.2E+1	1.0E+1	4.6E-1	3.3E-1	0.0E+0	
32	0.001007	0.000016	0.003112	0.000048	3.5E+4	7.9E+4	8.6E+3	3.3E+4	5.4E+3	4.9E+2	3.9E+3	2.2E+2	3.1E+2	1.3E+1	8.0E+0	3.4E-1	5.0E-1	9.0E-3	
33	0.001021	0.000017	0.003210	0.000049	5.1E+4	1.2E+5	1.4E+4	5.0E+4	9.5E+3	6.0E+2	9.9E+3	5.9E+2	1.1E+3	3.5E+1	1.5E+1	5.1E-1	6.3E-1	2.9E-2	
34	0.001020	0.000015	0.003180	0.000048	4.3E+4	1.1E+5	1.1E+4	4.5E+4	8.7E+3	6.0E+2	9.7E+3	6.3E+2	1.1E+3	4.1E+1	1.6E+1	6.1E-1	4.6E-1	2.4E-2	
35	0.000990	0.000014	0.003192	0.000047	5.3E+4	1.3E+5	1.4E+4	5.1E+4	9.1E+3	6.8E+2	6.0E+3	4.4E+2	5.4E+2	2.4E+1	1.0E+1	2.8E-1	4.6E-1	1.1E-2	
36	0.001020	0.000014	0.003218	0.000044	4.8E+4	1.1E+5	1.2E+4	4.9E+4	9.9E+3	6.5E+2	1.1E+4	8.7E+2	1.5E+3	6.7E+1	2.7E+1	1.0E+0	8.0E-1	2.8E-2	
38	0.000989	0.000018	0.003170	0.000053	5.3E+4	1.3E+5	1.5E+4	5.5E+4	9.3E+3	7.5E+2	5.4E+3	3.8E+2	6.0E+2	1.9E+1	1.1E+1	2.9E-1	4.0E-1	0.0E+0	
39	0.000975	0.000013	0.003156	0.000043	5.4E+4	1.2E+5	1.3E+4	5.1E+4	9.7E+3	6.8E+2	5.6E+3	4.0E+2	5.8E+2	2.3E+1	1.2E+1	4.6E-1	6.3E-1	1.7E-2	

40	0.000941	0.000015	0.002988	0.000046	5.0E+4	1.1E+5	1.4E+4	4.5E+4	8.8E+3	5.1E+2	6.1E+3	5.9E+2	1.2E+3	8.7E+1	7.8E+1	5.1E+0	7.7E+0	2.4E-1
41	0.000976	0.000013	0.003123	0.000048	5.1E+4	1.2E+5	1.4E+4	5.3E+4	9.3E+3	7.6E+2	5.9E+3	3.8E+2	3.7E+2	1.9E+1	8.7E+0	4.7E-1	4.0E-1	6.0E-3
42	0.000990	0.000018	0.003174	0.000060	5.0E+4	1.2E+5	1.3E+4	5.2E+4	9.2E+3	5.9E+2	6.2E+3	3.5E+2	3.2E+2	2.1E+1	1.1E+1	4.4E-1	5.3E-1	8.7E-3
43	0.000967	0.000016	0.003156	0.000060	5.2E+4	1.2E+5	1.3E+4	5.4E+4	9.0E+3	5.7E+2	5.7E+3	3.8E+2	6.0E+2	2.6E+1	1.5E+1	5.9E-1	8.4E-1	0.0E+0
44	0.000994	0.000014	0.003086	0.000043	4.8E+4	1.1E+5	1.2E+4	4.3E+4	9.4E+3	6.1E+2	7.2E+3	4.8E+2	6.6E+2	2.7E+1	1.1E+1	3.9E-1	6.4E-1	1.7E-2
45	0.000945	0.000013	0.003032	0.000047	5.3E+4	1.1E+5	1.3E+4	4.3E+4	8.1E+3	6.5E+2	5.1E+3	4.8E+2	1.7E+3	6.8E+1	5.3E+1	3.0E+0	4.9E+0	1.5E-1

	Pamir	Muzkol-Shatput	1929c1	73°46.1'	38°24.4'	pelite	bt grt ky st												
2	0.000957	0.000016	0.003101	0.000049	5.0E+4	1.2E+5	1.5E+4	5.1E+4	1.9E+4	4.8E+2	1.2E+4	1.4E+3	5.1E+3	4.3E+2	4.3E+2	2.6E+1	3.7E+1	8.3E-1	
3	0.000954	0.000015	0.003250	0.000057	6.8E+4	1.4E+5	1.6E+4	8.2E+4	2.1E+4	9.1E+2	1.6E+4	1.8E+3	7.5E+3	5.7E+2	5.2E+2	2.8E+1	3.4E+1	7.9E-1	
4	0.001132	0.000017	0.003791	0.000059	6.8E+4	1.4E+5	1.8E+4	7.0E+4	1.9E+4	4.8E+2	5.6E+3	3.6E+2	6.7E+2	1.9E+1	8.3E+0	1.0E-1	3.4E-1	4.6E-2	
5	0.001080	0.000019	0.003722	0.000070	7.5E+4	1.6E+5	2.0E+4	7.6E+4	1.3E+4	5.6E+2	6.5E+3	4.4E+2	1.1E+3	5.8E+1	5.8E+1	5.2E+0	1.1E+1	3.4E-1	
6	0.000982	0.000036	0.003190	0.000150	5.8E+4	1.2E+5	1.6E+4	4.3E+4	8.6E+3	4.2E+2	5.2E+3	3.6E+2	8.3E+2	2.6E+1	9.7E+0	5.9E-1	3.9E-1	6.9E-2	
7	0.000899	0.000014	0.002837	0.000046	8.1E+4	1.5E+5	2.1E+4	5.9E+4	1.6E+4	7.2E+2	1.0E+4	1.1E+3	5.3E+3	4.8E+2	5.8E+2	4.8E+1	1.1E+2	4.0E+0	
8	0.000982	0.000014	0.003241	0.000047	1.0E+5	1.8E+5	2.3E+4	5.9E+4	2.6E+4	8.4E+2	8.8E+3	7.5E+2	2.7E+3	2.0E+2	2.2E+2	2.2E+1	3.7E+1	1.4E+0	
9	0.001048	0.000022	0.003742	0.000068	1.0E+5	2.3E+5	2.6E+4	9.1E+4	1.5E+4	6.8E+2	7.1E+3	3.1E+2	5.9E+2	2.2E+1	1.1E+1	1.0E+0	1.5E+0	5.2E-2	
10	0.001146	0.000019	0.003687	0.000075	7.7E+4	1.4E+5	1.9E+4	5.1E+4	2.1E+4	5.2E+2	6.5E+3	4.8E+2	1.1E+3	3.5E+1	1.2E+1	8.8E-1	8.6E-1	1.6E-2	
11	0.001137	0.000018	0.003710	0.000067	7.6E+4	1.5E+5	1.7E+4	6.2E+4	1.6E+4	5.2E+2	6.3E+3	4.7E+2	1.0E+3	3.2E+1	1.3E+1	4.7E-1	3.6E-1	1.7E-2	
12	0.001120	0.000018	0.003670	0.000061	6.5E+4	1.4E+5	1.7E+4	6.2E+4	1.3E+4	4.9E+2	6.4E+3	4.2E+2	9.3E+2	3.1E+1	1.3E+1	9.0E-1	8.6E-1	7.1E-2	
13	0.001078	0.000018	0.003444	0.000052	9.1E+4	1.8E+5	2.2E+4	6.9E+4	1.3E+4	6.9E+2	8.3E+3	6.0E+2	1.6E+3	8.5E+1	7.0E+1	4.9E+0	1.2E+1	3.8E-1	
14	0.001180	0.000013	0.003747	0.000041	5.8E+4	1.2E+5	1.7E+4	5.1E+4	1.1E+4	4.4E+2	5.5E+3	3.1E+2	5.1E+2	1.5E+1	3.8E+0	0.0E+0	6.5E-1	4.0E-2	
15	0.001148	0.000015	0.003907	0.000060	6.7E+4	1.3E+5	1.6E+4	4.3E+4	9.6E+3	5.2E+2	5.1E+3	2.3E+2	4.3E+2	3.3E+1	2.1E+1	3.8E+0	5.0E+0	1.8E-1	
17	0.001163	0.000022	0.003947	0.000073	5.3E+4	1.2E+5	1.6E+4	5.6E+4	1.5E+4	4.8E+2	5.3E+3	2.7E+2	4.3E+2	1.2E+1	5.4E+0	9.7E-1	4.1E-1	3.2E-2	
18	0.000888	0.000018	0.002835	0.000046	6.9E+4	1.5E+5	2.1E+4	6.2E+4	1.7E+4	7.9E+2	1.4E+4	1.6E+3	7.2E+3	6.2E+2	7.9E+2	6.2E+1	1.2E+2	4.4E+0	
20	0.000875	0.000013	0.002797	0.000041	6.7E+4	1.6E+5	1.8E+4	7.7E+4	1.6E+4	8.3E+2	1.5E+4	1.6E+3	7.1E+3	5.9E+2	7.4E+2	6.7E+1	1.3E+2	4.0E+0	
31	0.001112	0.000015	0.003664	0.000069	8.1E+4	1.8E+5	2.4E+4	6.6E+4	1.9E+4	6.4E+2	6.9E+3	4.0E+2	6.8E+2	1.5E+1	4.6E+0	1.0E+0	0.0E+0	2.3E-2	
32	0.001141	0.000014	0.003734	0.000046	7.3E+4	1.4E+5	1.7E+4	5.4E+4	1.0E+4	4.3E+2	5.9E+3	3.8E+2	7.7E+2	2.5E+1	6.5E+0	8.4E-1	4.6E-1	5.0E-2	
33	0.001137	0.000014	0.003758	0.000050	8.0E+4	1.7E+5	2.2E+4	9.7E+4	8.2E+3	6.8E+2	5.7E+3	2.7E+2	3.0E+2	5.8E+0	2.4E+0	3.9E-1	0.0E+0	4.6E-2	
34	0.001100	0.000020	0.003730	0.000063	6.7E+4	1.3E+5	1.7E+4	6.1E+4	8.2E+3	4.4E+2	4.1E+3	1.6E+2	1.6E+2	2.4E+0	1.5E+0	1.0E+0	6.8E-1	3.5E-2	
35	0.001059	0.000017	0.003719	0.000069	7.8E+4	1.4E+5	1.7E+4	5.1E+4	1.0E+4	4.3E+2	3.9E+3	1.6E+2	2.1E+2	4.7E+0	2.7E+0	3.8E-1	0.0E+0	2.2E-2	
36	0.001113	0.000024	0.003725	0.000083	5.2E+4	1.1E+5	1.4E+4	6.4E+4	1.4E+4	3.7E+2	4.0E+3	1.7E+2	2.0E+2	4.3E+0	2.3E+0	0.0E+0	3.4E-1	4.1E-2	
37	0.001164	0.000024	0.003744	0.000071	5.1E+4	1.2E+5	1.7E+4	5.1E+4	1.1E+4	4.6E+2	5.1E+3	2.5E+2	3.4E+2	7.4E+0	3.1E+0	0.0E+0	0.0E+0	6.2E-2	
38	0.001147	0.000016	0.003739	0.000053	8.1E+4	1.5E+5	1.8E+4	7.0E+4	1.8E+4	5.1E+2	5.0E+3	2.3E+2	3.2E+2	7.4E+0	2.9E+0	5.0E-2	0.0E+0	3.4E-2	
40	0.001115	0.000020	0.003659	0.000057	8.9E+4	1.5E+5	1.9E+4	5.9E+4	1.6E+4	5.6E+2	6.8E+3	4.7E+2	1.0E+3	3.6E+1	1.7E+1	1.4E+0	7.1E-1	1.2E-1	
42	0.001045	0.000022	0.003394	0.000082	7.5E+4	1.4E+5	1.9E+4	7.3E+4	1.7E+4	6.6E+2	9.0E+3	8.4E+2	3.3E+3	2.6E+2	2.4E+2	1.5E+1	2.2E+1	6.6E-1	
43	0.001108	0.000026	0.003652	0.000074	7.5E+4	1.4E+5	1.8E+4	6.1E+4	1.0E+4	5.6E+2	7.0E+3	6.3E+2	2.5E+3	1.9E+2	1.5E+2	6.4E+0	8.2E+0	1.9E-1	

	Pamir	Muzkol-Shatput	0907f1	74°24.3'	38°15.7'	pelite	bt grt ky												
1	0.001002	0.000013	0.003319	0.000046	9.9E+4	1.8E+5	1.9E+4	6.8E+4	1.9E+4	1.4E+3	1.2E+4	1.4E+3	5.7E+3	4.4E+2	4.4E+2	2.4E+1	3.5E+1	1.0E+0	
2	0.000993	0.000013	0.003332	0.000040	7.7E+4	1.6E+5	2.0E+4	6.3E+4	1.6E+4	1.3E+3	1.2E+4	1.4E+3	6.2E+3	5.0E+2	4.9E+2	3.2E+1	4.6E+1	1.2E+0	
3	0.000987	0.000014	0.003429	0.000048	8.4E+4	1.7E+5	2.0E+4	7.8E+4	2.5E+4	1.3E+3	1.2E+4	1.4E+3	6.5E+3	5.3E+2	5.6E+2	3.7E+1	5.2E+1	1.5E+0	
4	0.000982	0.000012	0.003424	0.000038	7.7E+4	1.6E+5	2.0E+4	7.3E+4	1.3E+4	1.2E+3	1.1E+4	1.4E+3	5.8E+3	4.5E+2	4.8E+2	2.7E+1	3.9E+1	1.1E+0	
5	0.000998	0.000013	0.003458	0.000044	6.6E+4	1.6E+5	1.9E+4	6.9E+4	1.6E+4	1.2E+3	1.2E+4	1.4E+3	5.7E+3	4.7E+2	4.7E+2	2.7E+1	4.3E+1	1.1E+0	
6	0.001015	0.000013	0.003427	0.000044	6.7E+4	1.5E+5	1.8E+4	5.0E+4	1.2E+4	1.1E+3	1.1E+4	1.3E+3	5.7E+3	4.7E+2	5.2E+2	3.2E+1	4.7E+1	1.3E+0	
7	0.001107	0.000014	0.003634	0.000047	7.4E+4	1.5E+5	1.7E+4	6.3E+4	1.3E+4	1.1E+3	9.7E+3	1.1E+3	5.0E+3	4.4E+2	4.9E+2	3.5E+1	5.2E+1	1.8E+0	
8	0.001011	0.000015	0.003351	0.000045	6.4E+4	1.5E+5	1.7E+4	7.0E+4	1.1E+4	9.8E+2	1.0E+4	1.2E+3	4.7E+3	3.9E+2	4.0E+2	2.6E+1	3.5E+1	9.5E-1	
9	0.000984	0.000014	0.003324	0.000044	7.6E+4	1.5E+5	1.7E+4	6.3E+4	1.5E+4	9.2E+2	9.2E+3	1.1E+3	3.9E+3	2.7E+2	2.6E+2	1.3E+1	1.8E+1	5.0E-1	
10	0.000974	0.000012	0.003337	0.000041	6.2E+4	1.5E+5	1.6E+4	6.5E+4	1.1E+4	8.7E+2	9.0E+3	9.9E+2	3.8E+3	2.8E+2	2.5E+2	1.4E+1	1.8E+1	5.0E-1	
11	0.000980	0.000014	0.003289	0.000043	7.4E+4	1.5E+5	1.7E+4	6.1E+4	1.1E+4	8.8E+2	8.6E+3	9.6E+2	3.6E+3	2.5E+2	2.3E+2	1.2E+1	1.6E+1	4.5E-1	
12	0.000990	0.000017	0.003160	0.000046	7.2E+4	1.5E+5	1.8E+4	5.9E+4	9.4E+3	8.8E+2	8.0E+3	9.0E+2	3.7E+3	3.2E+2	4.4E+2	3.5E+1	6.1E+1	2.5E+0	
13	0.000996	0.000017	0.003269	0.000059	7.3E+4	1.5E+5	1.7E+4	5.9E+4	1.2E+4	9.2E+2	9.0E+3	1.0E+3	4.0E+3	3.0E+2	2.9E+2	1.8E+1	2.5E+1	8.0E-1	
14	0.001087	0.000013	0.003572	0.000041	5.9E+4	1.1E+5	1.4E+4	5.4E+4	9.0E+3	8.1E+2	7.8E+3	9.4E+2	4.0E+3	3.7E+2	3.9E+2	2.5E+1	3.7E+1	1.1E+0	
15	0.001061	0.000016	0.003519	0.000046	6.7E+4	1.4E+5	1.7E+4	6.1E+4	1.3E+4	1.0E+3	9.3E+3	1.2E+3	5.2E+3	4.6E+2	4.8E+2	3.0E+1	4.4E+1	1.3E+0	
17	0.001084	0.000025	0.003561	0.000089	6.2E+4	1.2E+5	1.4E+4	5.4E+4	1.0E+4	7.3E+2	7.0E+3	8.3E+2	3.6E+3	2.9E+2	3.3E+2	1.9E+1	2.8E+1	7.3E-1	
18	0.001081	0.000020	0.003556	0.000058	5.9E+4	1.1E+5	1.4E+4	3.8E+4	6.5E+3	7.7E+2	7.2E+3	8.4E+2	3.6E+3	3.1E+2	3.3E+2	2.0E+1	2.7E+1	7.8E-1	



19	0.001105	0.000024	0.003640	0.000080	5.1E+4	9.8E+4	1.3E+4	4.5E+4	9.5E+3	7.9E+2	7.5E+3	9.2E+2	4.0E+3	3.5E+2	3.5E+2	2.4E+1	3.4E+1	1.0E+0
20	0.001050	0.000021	0.003468	0.000080	6.0E+4	1.1E+5	1.3E+4	4.6E+4	7.7E+3	7.5E+2	7.8E+3	8.8E+2	3.6E+3	2.8E+2	2.6E+2	1.4E+1	1.9E+1	5.0E-1
21	0.001075	0.000013	0.003557	0.000047	5.9E+4	1.3E+5	1.6E+4	4.2E+4	6.7E+3	7.8E+2	7.7E+3	8.8E+2	3.8E+3	3.4E+2	3.5E+2	1.9E+1	2.9E+1	8.0E-1
22	0.001132	0.000029	0.003689	0.000097	4.7E+4	1.0E+5	1.3E+4	4.8E+4	6.1E+3	8.7E+2	7.5E+3	1.0E+3	5.1E+3	5.1E+2	6.3E+2	4.1E+1	6.5E+1	1.8E+0
23	0.001089	0.000021	0.003544	0.000072	5.2E+4	1.1E+5	1.3E+4	4.5E+4	7.9E+3	8.6E+2	7.7E+3	1.1E+3	5.9E+3	5.5E+2	6.5E+2	5.1E+1	7.1E+1	2.1E+0
24	0.001092	0.000016	0.003424	0.000047	4.9E+4	9.8E+4	1.3E+4	5.0E+4	7.1E+3	7.8E+2	6.2E+3	8.3E+2	4.5E+3	4.9E+2	6.3E+2	5.0E+1	8.1E+1	2.1E+0
25	0.001215	0.000035	0.003640	0.000110	5.2E+4	1.0E+5	1.4E+4	3.9E+4	6.0E+3	7.8E+2	6.6E+3	8.6E+2	4.3E+3	4.0E+2	4.4E+2	3.0E+1	4.8E+1	1.4E+0
26	0.001359	0.000029	0.004404	0.000086	4.8E+4	1.1E+5	1.7E+4	4.1E+4	6.8E+3	7.2E+2	4.6E+3	4.7E+2	2.6E+3	3.1E+2	4.9E+2	4.6E+1	8.9E+1	2.5E+0
27	0.001110	0.000033	0.003550	0.000100	5.2E+4	1.0E+5	1.3E+4	3.3E+4	7.1E+3	7.5E+2	7.5E+3	9.0E+2	4.0E+3	3.8E+2	4.0E+2	2.7E+1	3.6E+1	1.1E+0
28	0.001115	0.000021	0.003587	0.000062	4.7E+4	1.0E+5	1.4E+4	4.8E+4	6.2E+3	7.5E+2	7.1E+3	8.9E+2	3.9E+3	3.2E+2	3.4E+2	2.1E+1	3.7E+1	7.8E-1
29	0.001099	0.000021	0.003511	0.000067	4.7E+4	1.0E+5	1.3E+4	4.0E+4	7.9E+3	7.1E+2	6.7E+3	8.2E+2	3.6E+3	3.1E+2	3.2E+2	2.0E+1	3.2E+1	7.3E-1
30	0.001299	0.000025	0.004197	0.000081	4.7E+4	1.1E+5	1.6E+4	5.2E+4	6.3E+3	7.6E+2	5.9E+3	6.3E+2	3.2E+3	3.6E+2	5.0E+2	4.2E+1	8.5E+1	2.2E+0
31	0.001269	0.000021	0.003852	0.000060	5.1E+4	1.1E+5	1.4E+4	5.9E+4	7.5E+3	9.2E+2	9.3E+3	1.1E+3	5.0E+3	4.6E+2	5.2E+2	3.8E+1	6.9E+1	1.9E+0
32	0.001086	0.000031	0.003450	0.000094	5.6E+4	1.0E+5	1.3E+4	4.5E+4	6.5E+3	8.5E+2	8.0E+3	9.5E+2	4.5E+3	3.9E+2	4.4E+2	2.9E+1	4.0E+1	1.1E+0
33	0.001359	0.000018	0.004582	0.000064	4.5E+4	1.2E+5	1.6E+4	5.3E+4	8.7E+3	7.9E+2	6.6E+3	7.0E+2	3.4E+3	3.4E+2	4.8E+2	3.9E+1	8.2E+1	2.2E+0
34	0.001367	0.000017	0.004769	0.000070	5.0E+4	1.1E+5	1.8E+4	4.1E+4	7.7E+3	8.2E+2	7.2E+3	7.5E+2	3.5E+3	3.5E+2	4.4E+2	3.7E+1	7.1E+1	2.0E+0
35	0.001356	0.000021	0.004762	0.000090	4.6E+4	1.0E+5	1.3E+4	4.8E+4	1.1E+4	7.4E+2	7.2E+3	7.4E+2	3.4E+3	3.2E+2	4.3E+2	3.6E+1	6.4E+1	1.8E+0
36	0.001096	0.000020	0.003638	0.000068	5.8E+4	1.2E+5	1.7E+4	4.2E+4	9.0E+3	8.0E+2	7.9E+3	9.0E+2	3.9E+3	3.4E+2	3.5E+2	2.5E+1	3.6E+1	9.6E-1
38	0.001198	0.000020	0.003721	0.000065	3.7E+4	1.0E+5	1.4E+4	4.8E+4	7.6E+3	8.3E+2	8.0E+3	9.7E+2	4.7E+3	4.4E+2	4.8E+2	3.4E+1	6.0E+1	1.6E+0
39	0.001220	0.000024	0.003980	0.000110	4.5E+4	1.0E+5	1.3E+4	4.7E+4	5.1E+3	8.2E+2	8.6E+3	1.0E+3	5.2E+3	4.8E+2	5.8E+2	3.9E+1	7.4E+1	2.1E+0
40	0.001098	0.000023	0.003590	0.000110	5.9E+4	1.2E+5	1.4E+4	5.4E+4	1.1E+4	9.0E+2	8.9E+3	1.0E+3	4.3E+3	3.5E+2	3.5E+2	2.2E+1	3.2E+1	9.0E-1
41	0.001280	0.000017	0.004366	0.000060	5.4E+4	1.1E+5	1.6E+4	5.8E+4	8.8E+3	9.1E+2	6.3E+3	6.7E+2	3.4E+3	4.1E+2	5.9E+2	5.5E+1	1.1E+2	3.5E+0
42	0.001288	0.000015	0.004409	0.000051	7.2E+4	1.3E+5	1.7E+4	6.0E+4	1.5E+4	1.1E+3	8.3E+3	8.4E+2	4.1E+3	4.7E+2	6.2E+2	6.1E+1	1.0E+2	3.5E+0
43	0.001264	0.000016	0.004330	0.000055	5.1E+4	1.1E+5	1.4E+4	4.9E+4	1.6E+4	8.9E+2	6.2E+3	6.4E+2	3.2E+3	3.8E+2	5.7E+2	5.5E+1	1.0E+2	3.2E+0
44	0.001325	0.000025	0.004025	0.000070	3.6E+4	7.3E+4	1.1E+4	3.9E+4	9.7E+3	6.6E+2	6.1E+3	6.4E+2	2.9E+3	2.8E+2	3.7E+2	3.0E+1	5.4E+1	1.5E+0

	Himalaya	Kangmar	KD97-51b	89°38.9'	28°38'	pelite	bt st ky												
1	0.000779	0.000029	0.002607	0.000109	1.1E+5	2.9E+5	3.2E+4	8.5E+4	1.7E+4	1.3E+3	1.3E+4		5.4E+3		4.7E+2		4.8E+1		
2	0.000805	0.000034	0.002507	0.000111	1.2E+5	2.2E+5	3.1E+4	8.8E+4	1.9E+4	1.5E+3	1.6E+4		7.3E+3		5.1E+2		6.0E+1		
3	0.000808	0.000022	0.002639	0.000069	1.0E+5	2.9E+5	2.9E+4	1.0E+5	2.0E+4	1.3E+3	1.4E+4		5.9E+3		5.9E+2		5.1E+1		
4	0.000828	0.000024	0.002661	0.000079	1.6E+5	3.9E+5	2.7E+4	9.9E+4	2.3E+4	1.7E+3	1.9E+4		7.2E+3		6.5E+2		8.3E+1		
5	0.000830	0.000027	0.002663	0.000085	1.1E+5	2.1E+5	2.9E+4	8.8E+4	1.9E+4	1.3E+3	1.3E+4		6.4E+3		5.4E+2		5.9E+1		
6	0.000831	0.000023	0.002631	0.000078	1.1E+5	2.4E+5	2.7E+4	7.8E+4	1.5E+4	1.3E+3	1.3E+4		5.4E+3		4.8E+2		5.9E+1		
7	0.000831	0.000027	0.002671	0.000090	1.2E+5	3.7E+5	2.7E+4	1.0E+5	2.0E+4	1.6E+3	1.6E+4		8.0E+3		7.0E+2		8.1E+1		
8	0.000834	0.000023	0.002699	0.000076	1.3E+5	2.9E+5	3.2E+4	8.9E+4	1.6E+4	1.4E+3	1.4E+4		6.0E+3		5.1E+2		9.7E+1		
9	0.000837	0.000029	0.002658	0.000089	1.1E+5	2.6E+5	3.0E+4	8.6E+4	1.6E+4	1.4E+3	1.5E+4		6.4E+3		4.9E+2		5.8E+1		
10	0.000844	0.000023	0.002759	0.000074	1.0E+5	2.8E+5	3.2E+4	8.8E+4	1.8E+4	1.3E+3	1.3E+4		5.5E+3		5.6E+2		6.2E+1		
11	0.000850	0.000022	0.002804	0.000082	1.2E+5	2.5E+5	3.6E+4	1.1E+5	1.3E+4	1.4E+3	1.3E+4		5.4E+3		7.1E+2		8.2E+1		
12	0.000854	0.000025	0.002689	0.000082	1.2E+5	2.4E+5	2.9E+4	1.0E+5	1.7E+4	1.5E+3	1.6E+4		6.7E+3		6.2E+2		9.3E+1		
13	0.000854	0.000027	0.002745	0.000082	1.2E+5	2.5E+5	3.4E+4	1.2E+5	1.9E+4	1.7E+3	2.0E+4		5.8E+3		6.9E+2		8.0E+1		
14	0.000859	0.000028	0.002663	0.000093	1.2E+5	3.0E+5	2.8E+4	9.3E+4	1.5E+4	1.2E+3	1.2E+4		6.1E+3		5.6E+2		6.5E+1		
15	0.000867	0.000030	0.002772	0.000092	1.1E+5	3.0E+5	2.7E+4	1.0E+5	1.6E+4	1.2E+3	1.3E+4		5.8E+3		5.5E+2		7.7E+1		
16	0.000869	0.000028	0.002708	0.000094	1.1E+5	2.7E+5	2.5E+4	7.8E+4	1.2E+4	1.3E+3	1.1E+4		4.9E+3		5.0E+2		6.7E+1		
17	0.000871	0.000026	0.002787	0.000085	1.2E+5	2.4E+5	3.7E+4	9.2E+4	1.6E+4	1.4E+3	1.4E+4		6.2E+3		5.0E+2		7.7E+1		
18	0.000876	0.000026	0.002777	0.000080	1.3E+5	2.9E+5	3.7E+4	8.2E+4	1.6E+4	1.5E+3	1.3E+4		6.3E+3		4.5E+2		5.2E+1		
19	0.000877	0.000028	0.002763	0.000095	1.3E+5	1.9E+5	2.5E+4	8.4E+4	1.4E+4	1.3E+3	1.6E+4		5.5E+3		5.7E+2		9.7E+1		
20	0.000898	0.000027	0.002738	0.000085	1.4E+5	2.8E+5	3.2E+4	9.5E+4	1.9E+4	1.6E+3	1.5E+4		4.8E+3		6.4E+2		1.1E+2		

	Himalaya	Kangmar	KD97-42b	89°39.3'	28°42'	pelite	bt st ky												
1	0.000869	0.000027	0.002905	0.000089	6.3E+4	1.3E+5	1.6E+4	5.2E+4	9.9E+3	5.8E+2	8.4E+3		3.4E+3		3.4E+2		3.8E+1		
2	0.000870	0.000022	0.002751	0.000073	7.4E+4	1.3E+5	1.6E+4	5.4E+4	1.2E+4	7.7E+2	9.8E+3		3.4E+3		3.7E+2		4.5E+1		
3	0.000883	0.000023	0.002956	0.000080	7.5E+4	1.6E+5	1.7E+4	5.1E+4	1.0E+4	5.4E+2	1.0E+4		3.5E+3		3.1E+2		3.6E+1		
4	0.000884	0.000022	0.002915	0.000071	6.7E+4	1.2E+5	1.6E+4	5.6E+4	9.8E+3	5.8E+2	9.2E+3		3.3E+3		3.9E+2		4.4E+1		
5	0.000885	0.000024	0.002840	0.000082	6.3E+4	1.1E+5	1.5E+4	5.1E+4	7.9E+3	6.4E+2	9.0E+3		3.7E+3		3.1E+2		3.8E+1		
6	0.000885	0.000028	0.002787	0.000086	7.1E+4	1.3E+5	1.7E+4	5.6E+4	1.1E+4	5.7E+2	9.1E+3		2.9E+3		3.5E+2		3.8E+1		

7	0.000889	0.000021	0.002916	0.000073	5.9E+4	1.2E+5	1.6E+4	5.0E+4	8.5E+3	5.0E+2	9.7E+3	3.7E+3	2.6E+2	3.6E+1
8	0.000901	0.000024	0.002844	0.000077	6.5E+4	1.3E+5	1.3E+4	5.2E+4	1.0E+4	6.0E+2	8.3E+3	3.4E+3	3.0E+2	3.6E+1
9	0.000903	0.000027	0.002908	0.000090	7.0E+4	1.4E+5	1.3E+4	4.3E+4	7.8E+3	5.3E+2	7.4E+3	3.2E+3	2.8E+2	3.8E+1
10	0.000905	0.000027	0.002956	0.000089	8.9E+4	1.5E+5	1.8E+4	5.3E+4	1.1E+4	7.3E+2	1.0E+4	4.3E+3	3.8E+2	4.6E+1
11	0.000911	0.000023	0.002803	0.000064	5.9E+4	1.3E+5	1.8E+4	4.5E+4	1.2E+4	5.2E+2	9.5E+3	2.9E+3	2.7E+2	4.5E+1
12	0.000913	0.000028	0.002840	0.000081	6.1E+4	9.9E+4	1.4E+4	4.8E+4	1.0E+4	5.6E+2	7.9E+3	3.4E+3	3.4E+2	4.3E+1
13	0.000929	0.000024	0.002971	0.000077	6.8E+4	9.3E+4	1.5E+4	5.3E+4	7.5E+3	5.0E+2	7.9E+3	3.5E+3	2.2E+2	2.9E+1
14	0.000931	0.000025	0.002887	0.000076	7.5E+4	1.3E+5	1.6E+4	5.9E+4	9.6E+3	5.1E+2	9.6E+3	3.6E+3	2.7E+2	3.3E+1
15	0.000934	0.000025	0.003103	0.000090	6.7E+4	1.6E+5	1.6E+4	5.0E+4	1.1E+4	5.6E+2	9.6E+3	3.9E+3	3.9E+2	3.1E+1
16	0.000942	0.000025	0.002926	0.000081	6.1E+4	1.1E+5	1.3E+4	4.6E+4	9.7E+3	5.5E+2	8.4E+3	3.0E+3	3.1E+2	3.4E+1
17	0.000956	0.000025	0.002920	0.000077	6.8E+4	1.1E+5	1.6E+4	4.5E+4	1.2E+4	5.3E+2	1.0E+4	3.9E+3	3.2E+2	3.9E+1
18	0.000982	0.000027	0.002947	0.000076	7.0E+4	1.2E+5	1.7E+4	5.3E+4	1.0E+4	5.9E+2	9.6E+3	2.7E+3	2.3E+2	4.6E+1
19	0.000989	0.000029	0.002985	0.000083	8.2E+4	1.6E+5	2.2E+4	6.2E+4	1.2E+4	5.8E+2	8.8E+3	4.2E+3	2.8E+2	2.7E+1
20	0.001007	0.000027	0.002993	0.000082	6.6E+4	1.5E+5	1.6E+4	4.2E+4	1.0E+4	4.3E+2	1.0E+4	3.5E+3	2.1E+2	2.8E+1

	Himalaya	Kangmar	KD97-12b	89°39.4'	28°43.6'	pelite	bt st ky							
1	0.000697	0.000015	0.002298	0.000051	6.6E+4	1.5E+5	1.7E+4	7.5E+4	1.2E+4	5.0E+2	7.6E+3	3.2E+3	3.8E+2	6.1E+1
2	0.000731	0.000017	0.002373	0.000056	4.9E+4	1.0E+5	1.2E+4	4.4E+4	7.2E+3	5.8E+2	6.6E+3	3.1E+3	3.4E+2	4.0E+1
3	0.000742	0.000021	0.002482	0.000072	6.5E+4	1.4E+5	1.2E+4	5.9E+4	9.2E+3	7.6E+2	7.5E+3	2.8E+3	3.4E+2	4.5E+1
4	0.000749	0.000017	0.002417	0.000056	5.1E+4	1.2E+5	1.3E+4	4.3E+4	7.8E+3	6.1E+2	7.7E+3	3.5E+3	3.7E+2	5.7E+1
5	0.000751	0.000018	0.002389	0.000053	6.3E+4	1.8E+5	1.3E+4	5.9E+4	9.0E+3	7.3E+2	5.6E+3	4.0E+3	5.3E+2	7.8E+1
6	0.000765	0.000018	0.002555	0.000061	5.5E+4	1.6E+5	1.7E+4	4.9E+4	8.2E+3	6.9E+2	6.7E+3	3.2E+3	3.8E+2	5.5E+1
7	0.000776	0.000019	0.002544	0.000063	5.0E+4	1.1E+5	9.6E+3	3.5E+4	9.2E+3	5.6E+2	6.9E+3	3.5E+3	3.8E+2	6.7E+1
8	0.000781	0.000024	0.002441	0.000083	6.3E+4	1.4E+5	1.3E+4	5.2E+4	8.5E+3	6.4E+2	7.9E+3	3.4E+3	3.6E+2	5.3E+1
9	0.000781	0.000017	0.002618	0.000066	5.6E+4	1.5E+5	1.0E+4	4.9E+4	8.6E+3	6.3E+2	7.1E+3	3.2E+3	4.0E+2	4.4E+1
10	0.000783	0.000017	0.002553	0.000057	5.7E+4	9.6E+4	1.2E+4	4.9E+4	9.3E+3	5.7E+2	7.9E+3	4.0E+3	4.3E+2	8.0E+1
11	0.000790	0.000022	0.002622	0.000079	5.8E+4	1.3E+5	1.4E+4	4.6E+4	9.0E+3	5.0E+2	6.9E+3	3.2E+3	4.1E+2	6.3E+1
12	0.000792	0.000022	0.002538	0.000080	5.3E+4	1.0E+5	1.4E+4	4.6E+4	8.0E+3	7.0E+2	7.3E+3	3.3E+3	4.0E+2	4.7E+1
13	0.000793	0.000020	0.002525	0.000064	6.0E+4	1.0E+5	1.3E+4	4.4E+4	8.5E+3	5.3E+2	5.5E+3	3.7E+3	4.0E+2	6.4E+1
14	0.000793	0.000018	0.002599	0.000058	5.4E+4	9.2E+4	1.3E+4	4.7E+4	8.1E+3	6.7E+2	7.6E+3	3.8E+3	3.3E+2	7.1E+1
15	0.000795	0.000025	0.002662	0.000081	4.1E+4	8.4E+4	1.2E+4	3.4E+4	6.9E+3	5.5E+2	5.9E+3	2.5E+3	3.1E+2	4.5E+1
16	0.000799	0.000022	0.002610	0.000074	5.8E+4	1.4E+5	1.5E+4	4.7E+4	8.8E+3	5.7E+2	7.5E+3	3.7E+3	3.5E+2	6.1E+1
17	0.000801	0.000028	0.002623	0.000095	5.0E+4	8.5E+4	1.1E+4	4.2E+4	6.7E+3	5.6E+2	6.4E+3	3.4E+3	4.2E+2	5.8E+1
18	0.000807	0.000020	0.002509	0.000061	6.0E+4	1.0E+5	1.1E+4	4.6E+4	8.6E+3	7.4E+2	7.3E+3	3.7E+3	3.5E+2	4.8E+1
19	0.000807	0.000017	0.002564	0.000061	5.9E+4	1.7E+5	1.1E+4	4.1E+4	8.6E+3	6.2E+2	7.8E+3	3.5E+3	4.2E+2	5.7E+1
20	0.000809	0.000021	0.002581	0.000070	5.0E+4	1.2E+5	1.1E+4	3.6E+4	7.7E+3	4.9E+2	5.8E+3	3.4E+3	4.3E+2	7.4E+1
21	0.000815	0.000023	0.002632	0.000075	6.1E+4	1.2E+5	1.2E+4	5.1E+4	9.0E+3	7.1E+2	7.4E+3	4.0E+3	4.8E+2	4.8E+1
22	0.000816	0.000018	0.002613	0.000055	4.4E+4	1.0E+5	1.1E+4	4.1E+4	7.5E+3	5.4E+2	6.3E+3	3.5E+3	4.5E+2	6.1E+1
23	0.000818	0.000023	0.002599	0.000074	5.9E+4	1.3E+5	1.3E+4	4.8E+4	8.5E+3	5.6E+2	8.1E+3	3.3E+3	3.9E+2	4.6E+1
24	0.000819	0.000022	0.002754	0.000074	6.5E+4	9.8E+4	1.2E+4	5.3E+4	1.0E+4	7.7E+2	8.9E+3	3.0E+3	4.5E+2	6.1E+1
25	0.000828	0.000018	0.002688	0.000066	6.9E+4	1.3E+5	1.1E+4	6.1E+4	1.1E+4	7.4E+2	9.7E+3	3.9E+3	5.1E+2	6.8E+1
26	0.000833	0.000021	0.002701	0.000067	5.8E+4	1.0E+5	9.7E+3	4.4E+4	7.1E+3	5.7E+2	7.1E+3	3.3E+3	3.6E+2	5.1E+1
27	0.000858	0.000021	0.002777	0.000063	5.1E+4	1.3E+5	9.9E+3	4.7E+4	7.4E+3	6.2E+2	7.4E+3	3.0E+3	4.5E+2	4.9E+1
28	0.000878	0.000020	0.002925	0.000075	5.9E+4	1.4E+5	1.3E+4	5.7E+4	1.0E+4	6.5E+2	7.7E+3	3.4E+3	3.3E+2	4.8E+1

	Himalaya	Mabja	MD98-42	88°16.7'	28°43.3'	pelite	bt grt ky st							
1	0.000983	0.000033	0.003173	0.000095	5.2E+4	9.7E+4	1.3E+4	4.0E+4	8.7E+3	4.5E+2	9.2E+3	4.9E+3	2.9E+2	2.2E+1
2	0.001120	0.000054	0.003419	0.000169	5.5E+4	7.0E+4	1.2E+4	4.1E+4	7.7E+3	5.1E+2	1.0E+4	4.9E+3	2.9E+2	1.5E+1
3	0.001189	0.000032	0.003739	0.000100	5.6E+4	1.5E+5	1.2E+4	5.0E+4	9.8E+3	5.6E+2	9.9E+3	3.3E+3	2.6E+2	1.5E+1
4	0.001214	0.000043	0.003868	0.000145	5.9E+4	1.1E+5	1.4E+4	5.1E+4	8.4E+3	5.3E+2	8.5E+3	3.8E+3	2.5E+2	1.6E+1
5	0.001228	0.000041	0.003924	0.000130	5.5E+4	1.2E+5	1.6E+4	5.1E+4	7.6E+3	6.5E+2	7.3E+3	3.8E+3	2.7E+2	1.5E+1
6	0.001230	0.000031	0.003978	0.000101	5.8E+4	1.0E+5	1.1E+4	3.5E+4	7.9E+3	5.5E+2	8.5E+3	2.7E+3	2.0E+2	9.1E+0
7	0.001238	0.000034	0.004066	0.000113	5.8E+4	1.2E+5	1.2E+4	4.2E+4	6.0E+3	5.5E+2	7.1E+3	2.9E+3	1.9E+2	8.6E+0
8	0.001265	0.000047	0.004122	0.000153	6.6E+4	2.0E+5	1.7E+4	6.6E+4	9.0E+3	7.0E+2	8.4E+3	3.1E+3	2.3E+2	1.4E+1
9	0.001299	0.000041	0.004195	0.000126	5.6E+4	6.8E+4	1.2E+4	4.7E+4	7.2E+3	6.9E+2	6.1E+3	2.2E+3	1.3E+2	1.1E+1

10	0.001302	0.000034	0.004275	0.000114	6.1E+4	9.9E+4	1.2E+4	4.3E+4	7.2E+3	6.4E+2	7.2E+3	2.9E+3	1.8E+2	1.5E+1
11	0.001311	0.000035	0.004120	0.000105	5.6E+4	1.2E+5	1.5E+4	4.4E+4	8.6E+3	5.1E+2	6.6E+3	2.8E+3	1.9E+2	6.6E+0
12	0.001316	0.000036	0.004214	0.000120	5.5E+4	9.8E+4	1.5E+4	4.7E+4	7.9E+3	7.8E+2	8.7E+3	2.6E+3	1.4E+2	6.1E+0
13	0.001318	0.000035	0.004179	0.000112	5.1E+4	1.0E+5	1.4E+4	5.1E+4	7.6E+3	5.2E+2	8.1E+3	2.6E+3	1.7E+2	8.3E+0
14	0.001319	0.000036	0.004265	0.000116	4.9E+4	8.2E+4	1.1E+4	3.9E+4	7.6E+3	5.8E+2	6.0E+3	2.2E+3	1.4E+2	6.2E+0
15	0.001342	0.000034	0.004215	0.000107	6.6E+4	1.3E+5	1.2E+4	5.5E+4	7.2E+3	6.0E+2	6.3E+3	2.5E+3	1.5E+2	1.0E+1
16	0.001348	0.000037	0.004247	0.000127	6.0E+4	1.1E+5	1.4E+4	6.0E+4	9.7E+3	7.2E+2	8.2E+3	3.2E+3	1.8E+2	1.6E+1
17	0.001350	0.000040	0.004265	0.000130	5.4E+4	8.6E+4	1.2E+4	4.4E+4	7.1E+3	7.2E+2	5.9E+3	2.5E+3	1.3E+2	7.4E+0
18	0.001352	0.000039	0.004398	0.000125	5.7E+4	1.3E+5	1.4E+4	5.3E+4	8.3E+3	5.4E+2	9.2E+3	2.6E+3	8.8E+1	4.3E+0
19	0.001359	0.000038	0.004372	0.000120	5.4E+4	9.6E+4	1.2E+4	6.2E+4	7.6E+3	7.3E+2	5.2E+3	1.9E+3	6.9E+1	3.3E+0
20	0.001359	0.000040	0.004305	0.000129	5.0E+4	9.5E+4	1.2E+4	4.6E+4	6.8E+3	6.1E+2	7.7E+3	2.3E+3	1.3E+2	1.1E+1
21	0.001360	0.000035	0.004229	0.000110	6.3E+4	1.5E+5	1.4E+4	4.4E+4	7.6E+3	5.5E+2	6.0E+3	2.6E+3	1.2E+2	5.3E+0
22	0.001366	0.000054	0.004326	0.000177	6.5E+4	1.1E+5	1.5E+4	5.3E+4	7.3E+3	8.5E+2	8.8E+3	2.4E+3	1.3E+2	5.0E+0
23	0.001371	0.000043	0.004254	0.000130	6.0E+4	1.2E+5	1.6E+4	5.3E+4	7.6E+3	8.6E+2	8.4E+3	3.7E+3	1.5E+2	9.2E+0
24	0.001373	0.000035	0.004419	0.000111	6.5E+4	1.1E+5	1.4E+4	5.6E+4	8.0E+3	7.3E+2	6.5E+3	2.4E+3	6.8E+1	4.1E+0
25	0.001376	0.000040	0.004328	0.000122	5.6E+4	1.3E+5	1.4E+4	4.4E+4	7.8E+3	5.1E+2	6.4E+3	1.8E+3	7.3E+1	3.5E+0
26	0.001379	0.000042	0.004309	0.000125	6.1E+4	1.1E+5	1.3E+4	4.1E+4	6.5E+3	5.9E+2	6.2E+3	2.1E+3	8.5E+1	4.8E+0
27	0.001384	0.000037	0.004359	0.000123	6.2E+4	9.9E+4	1.5E+4	5.0E+4	9.8E+3	8.0E+2	6.6E+3	2.6E+3	1.1E+2	5.5E+0
28	0.001392	0.000040	0.004366	0.000117	5.8E+4	1.2E+5	1.1E+4	4.5E+4	6.4E+3	5.5E+2	6.4E+3	2.4E+3	1.0E+2	9.0E+0
29	0.001393	0.000055	0.004406	0.000169	5.5E+4	1.0E+5	1.2E+4	4.3E+4	6.0E+3	6.8E+2	6.4E+3	1.9E+3	7.2E+1	3.7E+0
30	0.001398	0.000039	0.004340	0.000108	7.5E+4	1.2E+5	1.6E+4	4.9E+4	8.5E+3	5.9E+2	7.6E+3	2.3E+3	1.3E+2	6.4E+0
31	0.001428	0.000043	0.004426	0.000141	5.7E+4	1.3E+5	1.3E+4	3.9E+4	8.1E+3	5.7E+2	7.5E+3	1.9E+3	8.5E+1	2.3E+0
32	0.001430	0.000046	0.004449	0.000142	7.0E+4	1.2E+5	1.6E+4	5.3E+4	7.8E+3	8.0E+2	7.9E+3	2.0E+3	7.7E+1	3.1E+0
33	0.001434	0.000043	0.004443	0.000137	7.4E+4	1.0E+5	1.9E+4	4.7E+4	8.0E+3	7.4E+2	7.3E+3	2.0E+3	8.7E+1	3.3E+0

	Himalaya	Mabja	MD98-51a	88° 16.9'	28°42.7'	pelite	bt grt ky st sil								
1	0.001222	0.000026	0.004001	0.000087	5.3E+4	1.4E+5	1.4E+4	4.5E+4	8.8E+3	6.1E+2	8.3E+3	2.6E+3	2.4E+2	1.3E+1	
2	0.001228	0.000032	0.004003	0.000112	5.2E+4	1.4E+5	1.6E+4	5.1E+4	9.6E+3	6.5E+2	7.9E+3	2.9E+3	1.8E+2	1.3E+1	
3	0.001232	0.000026	0.003909	0.000081	4.7E+4	7.8E+4	1.2E+4	4.1E+4	8.7E+3	5.5E+2	6.6E+3	2.7E+3	1.7E+2	1.4E+1	
4	0.001233	0.000028	0.003962	0.000092	5.3E+4	1.3E+5	1.3E+4	4.7E+4	6.8E+3	6.2E+2	6.5E+3	2.9E+3	1.6E+2	8.7E+0	
5	0.001237	0.000026	0.004044	0.000086	5.9E+4	1.2E+5	1.4E+4	4.3E+4	1.0E+4	6.4E+2	9.0E+3	3.2E+3	2.0E+2	9.1E+0	
6	0.001237	0.000035	0.003929	0.000113	5.7E+4	1.5E+5	1.5E+4	5.2E+4	8.9E+3	7.2E+2	9.0E+3	3.5E+3	2.2E+2	1.5E+1	
7	0.001239	0.000028	0.004053	0.000092	5.9E+4	1.2E+5	1.5E+4	4.3E+4	7.1E+3	6.4E+2	8.3E+3	3.1E+3	2.1E+2	1.4E+1	
8	0.001239	0.000042	0.003955	0.000135	5.2E+4	1.2E+5	1.4E+4	4.3E+4	7.8E+3	5.5E+2	7.1E+3	2.6E+3	1.5E+2	1.6E+1	
9	0.001240	0.000038	0.003969	0.000123	4.3E+4	1.2E+5	1.1E+4	4.0E+4	7.8E+3	6.2E+2	6.6E+3	2.8E+3	1.8E+2	1.6E+1	
10	0.001242	0.000038	0.003956	0.000121	5.1E+4	1.0E+5	1.3E+4	4.0E+4	7.5E+3	6.7E+2	8.3E+3	2.9E+3	2.2E+2	1.2E+1	
11	0.001243	0.000031	0.004025	0.000103	5.6E+4	1.3E+5	1.2E+4	5.4E+4	1.0E+4	7.0E+2	8.3E+3	3.1E+3	1.7E+2	1.6E+1	
12	0.001247	0.000031	0.003990	0.000103	6.4E+4	1.7E+5	1.5E+4	4.6E+4	9.7E+3	8.0E+2	1.0E+4	2.8E+3	2.2E+2	1.7E+1	
13	0.001248	0.000027	0.003982	0.000084	5.0E+4	8.6E+4	1.2E+4	4.3E+4	8.0E+3	6.0E+2	6.7E+3	2.4E+3	1.5E+2	1.2E+1	
14	0.001249	0.000029	0.003974	0.000089	5.4E+4	1.3E+5	1.1E+4	3.7E+4	8.8E+3	6.0E+2	7.3E+3	2.6E+3	2.0E+2	9.7E+0	
15	0.001266	0.000033	0.004052	0.000106	5.5E+4	1.3E+5	1.5E+4	4.4E+4	8.2E+3	6.2E+2	7.5E+3	2.6E+3	1.8E+2	1.2E+1	
16	0.001266	0.000039	0.004105	0.000126	6.0E+4	1.5E+5	1.6E+4	4.8E+4	8.8E+3	6.4E+2	8.6E+3	2.4E+3	1.4E+2	1.1E+1	
17	0.001271	0.000031	0.004015	0.000100	5.4E+4	1.2E+5	1.6E+4	4.2E+4	8.9E+3	6.5E+2	7.5E+3	2.5E+3	1.5E+2	1.1E+1	
18	0.001276	0.000031	0.004082	0.000100	5.5E+4	1.1E+5	1.3E+4	4.6E+4	7.7E+3	5.7E+2	8.8E+3	2.9E+3	1.5E+2	1.1E+1	
19	0.001313	0.000026	0.004123	0.000091	5.6E+4	1.5E+5	1.4E+4	4.2E+4	9.3E+3	6.7E+2	7.5E+3	3.1E+3	2.0E+2	1.6E+1	
20	0.001315	0.000029	0.004157	0.000096	4.6E+4	1.4E+5	1.4E+4	3.7E+4	8.0E+3	7.2E+2	7.3E+3	2.7E+3	1.9E+2	9.9E+0	
21	0.001316	0.000037	0.004070	0.000115	5.8E+4	1.4E+5	1.6E+4	4.5E+4	9.3E+3	5.9E+2	8.5E+3	2.8E+3	1.7E+2	1.1E+1	
22	0.001319	0.000029	0.004104	0.000098	4.6E+4	1.1E+5	1.4E+4	3.7E+4	7.4E+3	6.2E+2	6.7E+3	2.6E+3	1.7E+2	1.2E+1	

	Himalaya	Mabja	MD98-53	88°17.2'	28°42.6'	pelite	bt grt ky st sil								
1	0.001177	0.000030	0.003861	0.000103	5.4E+4	1.1E+5	2.0E+4	7.3E+4	1.1E+4	3.8E+2	1.0E+4	1.7E+3	1.1E+2	1.5E+1	
2	0.001228	0.000032	0.004113	0.000105	6.9E+4	1.3E+5	1.5E+4	6.0E+4	7.7E+3	4.0E+2	5.7E+3	1.6E+3	9.3E+1	3.8E+0	
3	0.001255	0.000033	0.004180	0.000110	6.3E+4	1.1E+5	1.3E+4	4.7E+4	6.2E+3	4.4E+2	5.8E+3	1.6E+3	1.4E+2	6.2E+0	
4	0.001261	0.000031	0.004110	0.000099	7.0E+4	1.3E+5	1.5E+4	6.8E+4	6.0E+3	5.4E+2	5.3E+3	1.6E+3	1.2E+2	4.8E+0	
5	0.001263	0.000031	0.004190	0.000102	7.6E+4	1.6E+5	1.4E+4	6.3E+4	7.3E+3	4.3E+2	6.1E+3	1.7E+3	1.3E+2	5.1E+0	

6	0.001271	0.000032	0.004218	0.000101	6.7E+4	9.6E+4	1.3E+4	5.8E+4	8.3E+3	4.6E+2	5.9E+3	1.7E+3	1.3E+2	6.8E+0
7	0.001336	0.000030	0.004315	0.000092	5.5E+4	1.1E+5	1.2E+4	4.4E+4	8.1E+3	5.0E+2	5.4E+3	1.6E+3	9.2E+1	3.9E+0
8	0.001342	0.000036	0.004398	0.000123	6.6E+4	1.5E+5	1.3E+4	5.3E+4	9.6E+3	5.2E+2	4.9E+3	1.4E+3	3.9E+1	6.9E-1
9	0.001343	0.000032	0.004442	0.000111	7.1E+4	1.4E+5	1.5E+4	5.4E+4	8.0E+3	4.9E+2	6.1E+3	1.9E+3	1.2E+2	6.9E+0
10	0.001357	0.000033	0.004415	0.000108	8.7E+4	1.1E+5	1.7E+4	6.9E+4	7.4E+3	7.0E+2	7.0E+3	4.5E+3	3.7E+2	3.4E+1
11	0.001363	0.000035	0.004393	0.000116	6.0E+4	1.1E+5	1.4E+4	4.5E+4	6.8E+3	5.0E+2	5.2E+3	3.3E+3	5.4E+2	6.2E+1
12	0.001364	0.000036	0.004421	0.000119	6.4E+4	1.3E+5	1.4E+4	5.5E+4	7.0E+3	4.1E+2	5.3E+3	2.9E+3	4.7E+2	4.0E+1
13	0.001368	0.000038	0.004456	0.000127	5.2E+4	1.0E+5	1.2E+4	4.1E+4	6.5E+3	4.7E+2	5.2E+3	2.6E+3	3.3E+2	1.9E+1
14	0.001387	0.000038	0.004527	0.000132	5.4E+4	1.2E+5	1.3E+4	4.5E+4	7.6E+3	5.5E+2	6.3E+3	3.3E+3	6.4E+2	5.7E+1
15	0.001399	0.000037	0.004457	0.000118	5.4E+4	1.0E+5	1.2E+4	5.3E+4	1.1E+4	5.1E+2	6.2E+3	3.2E+3	3.5E+2	2.2E+1
16	0.001411	0.000038	0.004527	0.000121	6.5E+4	1.0E+5	1.2E+4	7.3E+4	7.6E+3	6.8E+2	7.4E+3	3.7E+3	5.9E+2	7.4E+1
17	0.001412	0.000035	0.004640	0.000117	5.5E+4	1.1E+5	1.2E+4	3.8E+4	7.7E+3	5.7E+2	6.8E+3	3.3E+3	7.8E+2	9.0E+1