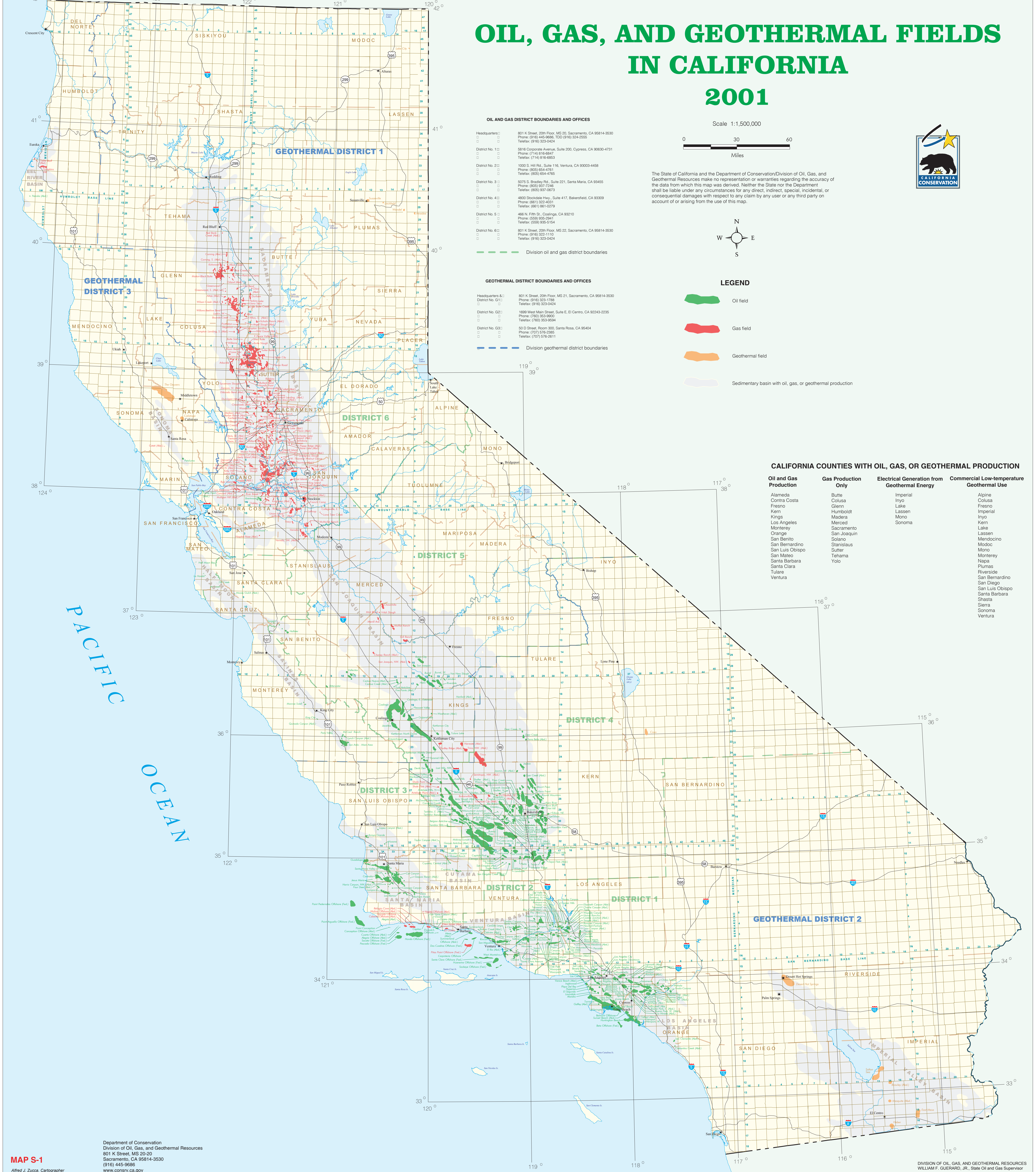


OIL, GAS, AND GEOTHERMAL FIELDS IN CALIFORNIA 2001



OIL AND GAS DISTRICT BOUNDARIES AND OFFICES

Headquarters: 801 K Street, 20th Floor, MS 20, Sacramento, CA 95814-3530
 Phone: (916) 445-9666, TDD: (916) 524-3530
 Telefax: (916) 323-0424

District No. 1: 2810 Colusa Avenue, Suite 200, Colusa, CA 95932-4751
 Phone: (916) 323-0424
 Telefax: (916) 323-0424

District No. 2: 1000 E. Hill Rd., Suite 116, Yuba City, CA 95903-4498
 Phone: (916) 824-4100
 Telefax: (916) 824-4100

District No. 3: 5205 S. Bradley Way, Suite 201, Santa Maria, CA 93455
 Phone: (805) 937-7266
 Telefax: (805) 937-0773

District No. 4: 4820 Broadway Hwy., Suite 417, Bakerfield, CA 93309
 Phone: (805) 325-4200
 Telefax: (805) 325-4200

District No. 5: 466 N. First St., Colusa, CA 95010
 Phone: (916) 824-4100
 Telefax: (916) 824-4100

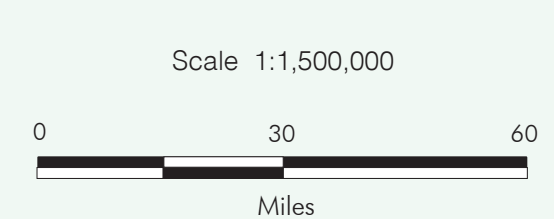
District No. 6: 801 K Street, 20th Floor, MS 20, Sacramento, CA 95814-3530
 Phone: (916) 323-1115
 Telefax: (916) 323-0424

GEOTHERMAL DISTRICT BOUNDARIES AND OFFICES

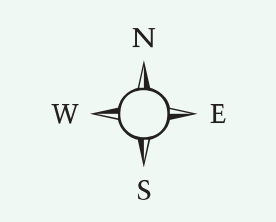
Headquarters: 801 K Street, 20th Floor, MS 20, Sacramento, CA 95814-3530
 Phone: (916) 323-1785
 Telefax: (916) 323-0424

District No. G2: 1088 West Main Street, Suite E, El Centro, CA 92243-2225
 Phone: (951) 352-9900
 Telefax: (951) 352-9904

District No. G3: 801 K Street, 20th Floor, MS 20, Sacramento, CA 95814-3530
 Phone: (916) 323-1115
 Telefax: (916) 323-0424



The State of California and the Department of Conservation/Division of Oil, Gas, and Geothermal Resources make no representation or warranties regarding the accuracy of the data from which this map was derived. Neither the State nor the Department shall be liable under any circumstances for any direct, indirect, special, incidental, or consequential damages with respect to any claim by any user or any third party on account of or arising from the use of this map.



LEGEND

- Oil field
- Gas field
- Geothermal field
- Sedimentary basin with oil, gas, or geothermal production

CALIFORNIA COUNTIES WITH OIL, GAS, OR GEOTHERMAL PRODUCTION

Oil and Gas Production	Gas Production Only	Electrical Generation from Geothermal Energy	Commercial Low-temperature Geothermal Use
Alameda	Butte	Imperial	Alpine
Contra Costa	Colusa	Inyo	Colusa
Fresno	Glenn	Lake	Fresno
Kern	Humboldt	Lassen	Imperial
Kings	Madera	Mono	Inyo
Los Angeles	Merced	Sacramento	Kern
Monterey	San Joaquin	San Bernardino	Lake
Orange	Solano	Sutter	Lassen
San Benito	Stanislaus	Tehama	Mendocino
San Bernardino	Sutter	Tulare	Mozoc
San Luis Obispo	Yuba		Mono
San Mateo			Monterey
Santa Barbara			Napa
Santa Clara			Plumas
Tulare			Riverside
Ventura			San Bernardino
			San Diego
			San Luis Obispo
			Santa Barbara
			Shasta
			Sierra
			Sonoma
			Ventura