



WELCOME BACK!

Vol. 29
62118
UNIVERSITY OF CALIFORNIA
SANTA BARBARA COLLEGE

REGISTRATION PROCEDURE REVEALED

Officials Welcome New and Old Students; Offer Their Services

Cordial welcomes to new and old students by four of the campus officials usher in the new academic year. The keynote of their messages stressed the fact that students should feel free to discuss their problems, ideas, and suggestions with their leaders and advisors, promoting the ideal of unity and close cooperation.

Provost Williams

On behalf of the faculty and administration of the College, I extend a cordial welcome to all our new students, and to all those who have returned.

Your decision to come to Santa Barbara College was evidently based upon your belief that our offerings are suited to your needs. We hope this proves to be the case, and efforts are being made to improve the College in every way.

As a student here, you have joined the great family of the University of California. You have assumed the responsibility of that membership, in one of the greatest of all educational institutions. We shall work together to make our University still greater, and to make our College one of its most important parts.

J. HAROLD WILLIAMS,
Acting Provost.

Robert Hartzell

Welcome Gauchos — old and new!

The Hill-Top has looked mighty bleak these past three months and everybody is looking forward to getting back into swing with the hammer and tongs again.

For you who are newcomers, let me advise you that your choice of institutions couldn't have been better. We are proud of what we have here and we are proud of our participation in making it better with each succeeding year. Take advantage of what we offer and, in turn, give us something of yourselves.

You returning Gauchos will like the program prepared by a Council that worked all summer. It doesn't include my much-vaunted parking lot, although everything possible is being done to alleviate the space shortage. However, everything else has clicked beautifully and I hope you join in on the fun and services offered.

Aside from grass on the lawns and more benches for outdoor lunchers, Gauchos this year will enjoy a program emphasizing Col-



Helen Sweet



J. Harold Williams

lege spirit and traditions. But such a program is only potential unless you make use of it—so, whether it be in studies or play, let's make this the greatest year in Santa Barbara history!

With heartfelt welcome,

BOB HARTZELL,
ASB President.

Dean Helen E. Sweet

The year 1949-50 promises to be full of opportunities for rich experiences for everyone at Santa Barbara College. Your Student Body President and Council are keenly interested in offering a program for you which is diversified and well-rounded. The faculty has rich stores of academic gold to offer you. The Administration wants each student to find his niche and to profit through the best use of all the facilities offered by the University of California on this campus.

As a keynote to your success, may I recommend a consideration of other people, the discipline of working hard, the selection, not too widely, shallowly, nor too intently of veins for exploration, the desire to discover and hold to values which have been proved to be sound, and the joy of achievement.

Whenever the channels are confusing, or the destination points are undescribed, do not hesitate to ask for guide posts or descriptions from your faculty advisers or Deans.

I wish for all of you a profitable year.

Most sincerely,
HELEN E. SWEET,
Dean of Women.

Dean Will Hayes

To you "old timers" who have been here before, welcome back . . . and to you who are on our campus for the first time, the administration extends warmest greetings. We hope you'll like Santa Barbara College. You'll find here an outstanding faculty, a friendly and hard-working group of students, and an administration whose offices are always open to you.

Santa Barbara College has a

Journalism Aspirants Will Find Openings On El Gaucho Staff

Now is the time to submit applications for places as reporters, sports reporters, and copyreaders on the *El Gaucho* staff. Openings are available for qualified, experienced applicants on the editorial staff.

Advancement is commensurate with ability and interest. A new staff policy instigated this semester will afford members many privileges and benefits heretofore unfeasible. Rewards for good journalism will add incentive to able staff members and the aim of publishing a newspaper of superior calibre will be reflected in the spirit of its members.

Applicants should apply at the *El Gaucho* office in Elm Hall or contact Editors Doris Spotts or Don Mills through the student mail boxes.

reputation for high scholarship, and expects all students to give first priority to this phase of their college life. You've been admitted to UCSB because your record indicates that you can meet high scholastic standards. This is your first responsibility . . . a responsibility you have to yourself, to your family, and to the University. However, the administration recognizes the benefits to be derived from participation in activities and has made possible a wide range from which you can choose. Look around and find those in which you are interested. Join up! Your contribution to college life will make UCSB an even better place in which to work and play than it is now.

Several faculty members have said that the present student body is the finest we've ever had. This means that we can look for ever finer school spirit, higher academic accomplishments and wider participation in student activities in 1949-50 than we've ever had before.

WILL HAYES,
Acting Dean of Men.

FROM OUR PRESIDENT

Almost simultaneously autumn and our University classes start again. To those of you who are returning from vacations after one year on the campus, or two, or three, or the indeterminate number of years of the graduate student and the fast-decreasing ranks of the veteran, I extend the greeting of one who would like to be your friend; to those whose homes are, or have been, in foreign lands, I extend a very special greeting, one that I wish were in as many languages as are spoken on the campus, for these students have come a great distance, not only geographically, but culturally, and I should like very much to have them feel at home.

We have a big job ahead of us this semester as the time a student spends at the University is usually the final period of preparation for taking his place in the world as a working adult, and the postwar years have revealed unusually heavy responsibilities for educated men. Besides working toward the goal of acquiring knowledge, a student who is girding himself to meet these responsibilities must learn to develop effective relations with people. I want you to know that the faculty and administration of the University are ready to help you in any way possible in achieving these objectives. Please call upon us—all or any of us—whenever you feel the need.

And remember that there is a welcome for you all through the academic year just as there is this special welcome for you as you start the new semester.

ROBERT G. SPROUL,
President of the University.

Weekend Comedy Revue is Repeat Hit Of Mask and Scroll

The smash comedy revue "Hit and Run" will be repeated for college students in the Riviera Auditorium on Friday and Saturday nights, September 16th and 17th, at 8 p. m. This production, given by Mask and Scroll during the big 8 summer series at the Alhacama Theatre, was one of the most popular of the summer series. After opening night at the Alhacama, the theatre was immediately sold out and scores of people were turned away.

"Hit and Run" is an intimate revue with sketches by Ted Hatlen of the Speech Department, music by Cal Estes of KTMS and Dr. Linn of the Foreign Language Department. The revue is made up of skits, musical numbers, dances, and other specialties which satirize Santa Barbara life.

The show is loaded with talent featuring such performers as Jean Bellinger of the Women's Physical Education Department, Ann Starr Westwick, Paul Kliss, Gerry Larson, Ted Shank, Tom Keen, Gil Johnston, Jim Scott, Marie Willett, and thirty other players prominent in Santa Barbara theatrical circles.

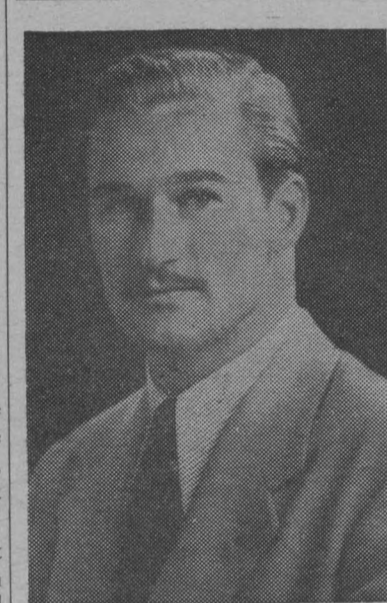
Ronald Scofield, the News-Press critic, called it the "Wow of the year." "Hit and Run" promises to start the semester off with a bang. All seats are 50 cents. Tickets may be obtained on campus from members of Theta Alpha Phi or from Roy Gammill's clothing store.

SONG LEADERS NEEDED

Any women students wishing to become student body song leaders are requested to contact Vic McCarty through the student mail as soon as possible. Tryouts will be held the first of next week.

'Seniors First' Innovation of Speedier Registration Procedure

With the registration process for new students well under way, returning students of Santa Barbara College invade the campus today for individual counseling, registration, and payment of fees.



Bob Hartzell

In addition to these activities, which continue from 9 a. m. to 4 p. m., there will be an R. O. T. C. examination for lower division men students from 8 to 10 Wednesday morning in Pine Hall 100, and an advanced R. O. T. C. examination in the same place from 10 a. m. to 2 p. m.

Starting at 8 a. m., appointments will be made for the required entrance physical examinations for new women students (A through L) at the Student Health Center. The M-through-Z group will begin at 1 p. m.

On Thursday new students will receive individual counseling, register and pay fees. As an innovation this year, seniors only will be allowed to sign up for classes on Thursday, while all other students will sign up for classes on Friday.

On Friday afternoon at 3 o'clock there will be a required assembly for all women students in the Auditorium.

Another new procedure will be introduced on all University of California campuses with the administration of a test for junior students. At Santa Barbara College the test will be given in the Auditorium at 9 a. m. Saturday. All juniors, returning and transfer, must take this combination achievement and aptitude test, which will be used later for counseling purposes.

In case anyone needs reminding, instruction begins on Monday, September 19.

CAMPUS CUTTINGS

All organizations contributing to the Campus Cuttings column of *El Gaucho* are notified that material turned in later than Tuesday noon for the Friday edition and Friday noon for the Tuesday edition will not be run.

The editors also request that stories be limited to seven typed lines and be turned in on unlined paper. A pertinent point should be included in each story. Any items which do not comply with these requests will be rewritten or not used at the discretion of the editors.

All-University Picnic Tomorrow at La Playa

Tomorrow night, Thursday, September 15, is a big night so set it aside and plan to be at La Playa Field at 5 p. m. for the A. W. S. A. M. S. sponsored family style picnic to which everyone—faculty, students, administrative staff, and other university employees (and their families)—is invited.

The College Recreation Association plans to sharpen appetites with an hour of games before the picnic dinner which will be served at 6 p. m. The evening's menu features chili beans, tossed salad, French bread, milk or coffee, and ice cream. At 8 p. m. this season's football players will be introduced at the Gridiron Prevue. At 9:30 p. m. the Mesa campus quad will be the scene of the Stag Howdy Dance.

Admission to the All-College Picnic will be 50 cents for faculty and students, 40 cents will admit freshmen, and children under 12 will be charged 30 cents. Men who have AMS cards will be admitted free.

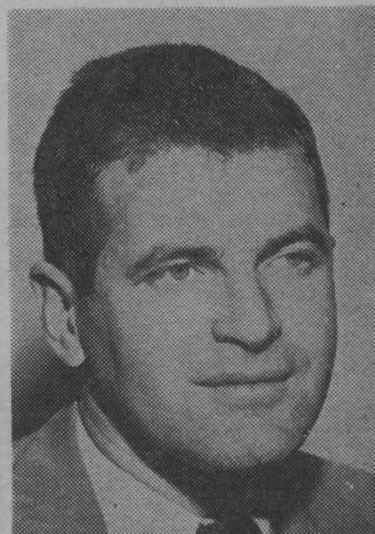
Ken Trevey is in charge of ticket sales. All student tickets will be sold from the booth of the men's

(Continued on page 5)

Gershwin Play Coming This Fall

"Of Thee I Sing," George Gershwin's Pulitzer Prize operetta, is to be the combined production of the speech, physical education, and music departments late this fall. The operetta lampoons politics and customs in the United States and should prove highly popular entertainment.

The operetta will run for three nights, December 8, 9, and 10. It calls for a cast of 19, 14 men and 5 women; all students, new and old, who have any talents in the fields of singing and acting are urged to contact Dr. Christy or Mr. Hatlen during the first week of school.



Will Hayes

Published every Tuesday and Friday during the school year except during vacations and examination periods by the Associated Students of the University of California, Santa Barbara, California. Opinions expressed herein are those of the staff unless otherwise indicated.

Entered as second-class matter May 23, 1947, at the post office at Santa Barbara, California, under the Act of March 3, 1879. Mailing charge is \$2.00 per year, payable in advance.

Doris Spotts **EDITORS** **Don Mills**
Phone 29944 Night Phone 29310
Managing Editor Helen Heitfield
City Desk Shirley Cutter
Sports Desk Don Humphreys
Special Assignment Desk Mary Sharer
Society Desk Jan Jones

EDITORIAL

Why does a person go to college? For a variety of reasons. The most important reason concerns acquiring an education that will fit him for his life work. The second reason is one of a social nature. Therefore, college life is divided into two spheres: the academic, or "cracking the books," and the social, or "sosh'time." These spheres of interest sometimes conflict—and sometimes work hand in hand.

But there is yet another sphere of interest that is neither concurrent with nor tangent to these spheres. It encompasses both to a certain extent and complements them. It can be called the "pursuit of an avocation"; the administrative name is extra-curricular.

College life is something that will be looked back on with fond memories—and sometimes with the realization that important decisions were made during that period. Often college students are not certain what field of endeavor to pursue. This is understandable, since choosing a vocation is the most important decision the person will make during his lifetime.

Many famous men found themselves in the same quandary while in college. By following the course set by their college avocation, they realized what their true niche in life was. They put their potential talents to use and profited by them.

The same is true today. College students should not limit themselves only to the spheres of cracking the books and sosh time, but should work to develop their potential talents and abilities as well.

Avocational opportunities on our campus include art work, drama productions, musical activities, journalism, debate events, sports, and on and on. Perhaps participation in one of these activities will decide YOUR future life. Use the third campus sphere to advantage; put your potentialities to work.

In any modern community one finds newspapers. These journals serve several purposes. They are a means of advertisement, of education, and of entertainment. Their main purpose, their basic reason for existence, is, however, none of these. This reason is told us by the very word "newspaper." It is to inform the reader of what is happening in his community, to tell him the news.

In our college community the source of such information is *El Gaucho*, the paper published twice weekly by the Associated Students for the benefit of those interested in the affairs of the school. Since it is the only newspaper on the campus the *Gaucho* must serve the entire student body. Its standards of publication are determined by this necessity. This semester the staff of *El Gaucho* will attempt to publish the news in such a way that the majority of students will find it of interest. Its members will (1) report news of campus activities from an unbiased viewpoint, (2) be impartial in the publication of organization news in a column for that purpose, (3) publish a quantity of that news which is relative to its importance in comparison to other stories, (4) not participate in campus politics by means of the paper, (5) present columns and feature material of interest to all, and (6) give full local sports coverage. This policy will furnish the foundation upon which to build a successful journalistic structure, a paper of interest to all its readers.

Coordinator to Aid Student Affairs

A new position within student body government, known as the Coordinator of Student Affairs, has been established by the Legislative Council. Elaine Strobel has been appointed to take over the new position; she will maintain a two-hour office period each school day in the study body office.

The duties of the coordinator will include the accurate maintenance of the daily college event

calendar on bulletin boards and in the school paper, providing a job placement service for part-time jobs, channeling of all social events for calendar scheduling and keeping records of all legislative minutes and committee and board members, with the proper filing of such information.

Ike and Roy's Pathfinder Service

Announce Special Discounts for Students

Ethyl 25 9/10c — Regular 23 9/10c

Corner De la Vina and Victoria Bring Student Body Card



WESLEY FOUNDATION

Sunday and Week Day Activities for College Students

Regular program opens Sunday, September 18 — 6 p. m.
SUPPER WORSHIP FELLOWSHIP

BARBECUE — FRIDAY, SEPTEMBER 16
Transportation from church at 5 p. m.—return in time for Howdy Dance at 9 p. m.

Come down — have a coke, and get acquainted at Wesley Foundation Headquarters at the Methodist Church during Registration Week — 9 a. m. to 5 p. m.

First Methodist Church, East Anapamu at Garden



Gabardine Suit, \$39.95



Jonathan Logan Dress, \$12.95



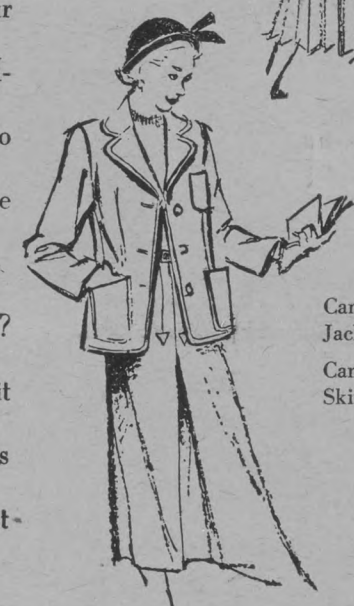
Rayon Gabardine Dress, \$9.95

campus clothes with a high I. Q.

You'll find everything, but everything, you'll need in campus clothes in our College Annex. AT MOUTH-WATERING PRICES, TOO. Do you read the fashion mags? Lou Rose has that stuff. Do you yearn to be one of the best-dressed on campus? Lou Rose College Annex has what it takes. The store's packed to the doors with the newest and the pricigest-campus clothes you ever saw!



Jersey Blouse, \$5.95
Jersey Skirt, \$8.95



Camel Tan Jacket, \$25
Camel Tan Skirt, \$9.95



Fleece Coat, \$29.95



Plaid Suit-Dress, \$19.95



Pandora Nylon Cardigan, \$7.95
Pullover, \$5.95
Tweed Skirt, \$5.95



Taffeta Formal, \$25



Tweed Coat, \$17.95

and announcing the winners of the Lou Rose Campus Representative contest
JUNE MOREY
ELENITA QUINTERO
(You'll be hearing from them!)



HEALTH EDUCATION

Table with columns COURSE—AUTHOR—TEXT and INSTRUCTOR. Lists health education courses and their respective authors and instructors.

WOMEN

Table with columns COURSE—AUTHOR—TEXT and INSTRUCTOR. Lists women's studies courses and their respective authors and instructors.

PHYSICAL SCIENCE

CHEMISTRY

Table with columns COURSE—AUTHOR—TEXT and INSTRUCTOR. Lists chemistry courses and their respective authors and instructors.

PHYSICS

Table with columns COURSE—AUTHOR—TEXT and INSTRUCTOR. Lists physics courses and their respective authors and instructors.

PHYSICAL SCIENCE

Table with columns COURSE—AUTHOR—TEXT and INSTRUCTOR. Lists physical science courses and their respective authors and instructors.

GEOLOGY

Table with columns COURSE—AUTHOR—TEXT and INSTRUCTOR. Lists geology courses and their respective authors and instructors.

MINEROLOGY

Table with columns COURSE—AUTHOR—TEXT and INSTRUCTOR. Lists mineralogy courses and their respective authors and instructors.

SOCIAL SCIENCE

ANTHROPOLOGY

Table with columns COURSE—AUTHOR—TEXT and INSTRUCTOR. Lists anthropology courses and their respective authors and instructors.

ECONOMICS

Table with columns COURSE—AUTHOR—TEXT and INSTRUCTOR. Lists economics courses and their respective authors and instructors.

GEOGRAPHY

Table with columns COURSE—AUTHOR—TEXT and INSTRUCTOR. Lists geography courses and their respective authors and instructors.

HISTORY

Table with columns COURSE—AUTHOR—TEXT and INSTRUCTOR. Lists history courses and their respective authors and instructors.

POLITICAL SCIENCE

Table with columns COURSE—AUTHOR—TEXT and INSTRUCTOR. Lists political science courses and their respective authors and instructors.

SOCIOLOGY

Table with columns COURSE—AUTHOR—TEXT and INSTRUCTOR. Lists sociology courses and their respective authors and instructors.

PHILOSOPHY

Table with columns COURSE—AUTHOR—TEXT and INSTRUCTOR. Lists philosophy courses and their respective authors and instructors.

SPEECH

Table with columns COURSE—AUTHOR—TEXT and INSTRUCTOR. Lists speech courses and their respective authors and instructors.

SUPPLY LIST

The courses listed below have, in addition to texts, certain supplies that are required for classroom and laboratory use. In addition to listing the items on your cash slip or GI book bill, please specify the name of the instructor to insure your getting the correct supplies for your section.

VETERANS NOTE: No item that is not peculiar to the course you are taking (such as a Tee Square, Architect's Scale, and like items) may be purchased as a requirement of the course but must be counted as a part of the "general supply" allowance of the term. In other words, do not list the drawing pencils required for a course except as general supplies. If this is not clear, see the Coordinator's representative in the Bookstore line.

ART

Table with columns COURSE—TITLE, INSTRUCTOR, and SUPPLIES. Lists art courses and their required supplies.

ZOOLOGY

Table with columns COURSE—TITLE, INSTRUCTOR, and SUPPLIES. Lists zoology courses and their required supplies.

EDUCATIONAL PSYCHOLOGY

Table with columns COURSE—TITLE, INSTRUCTOR, and SUPPLIES. Lists educational psychology courses and their required supplies.

PSYCHOLOGY

Table with columns COURSE—TITLE, INSTRUCTOR, and SUPPLIES. Lists psychology courses and their required supplies.

ENGLISH

Table with columns COURSE—TITLE, INSTRUCTOR, and SUPPLIES. Lists English courses and their required supplies.

HOME ECONOMICS

Table with columns COURSE—TITLE, INSTRUCTOR, and SUPPLIES. Lists home economics courses and their required supplies.

INDUSTRIAL ARTS

Table with columns COURSE—TITLE, INSTRUCTOR, and SUPPLIES. Lists industrial arts courses and their required supplies.

GRAPHIC ARTS

Table with columns COURSE—TITLE, INSTRUCTOR, and SUPPLIES. Lists graphic arts courses and their required supplies.

EDUCATIONAL PSYCHOLOGY

Table with columns COURSE—TITLE, INSTRUCTOR, and SUPPLIES. Lists educational psychology courses and their required supplies.

ENGLISH

Table with columns COURSE—TITLE, INSTRUCTOR, and SUPPLIES. Lists English courses and their required supplies.

HOME ECONOMICS

Table with columns COURSE—TITLE, INSTRUCTOR, and SUPPLIES. Lists home economics courses and their required supplies.

INDUSTRIAL ARTS

Table with columns COURSE—TITLE, INSTRUCTOR, and SUPPLIES. Lists industrial arts courses and their required supplies.

Table with columns COURSE—TITLE and INSTRUCTOR. Lists various courses and their instructors.

MUSIC

Table with columns COURSE—TITLE, INSTRUCTOR, and SUPPLIES. Lists music courses and their required supplies.

PHYSICAL EDUCATION

HEALTH EDUCATION

WOMEN'S

PHYSICAL SCIENCES

CHEMISTRY

Table with columns COURSE—TITLE, INSTRUCTOR, and SUPPLIES. Lists chemistry courses and their required supplies.

PHYSICS

Table with columns COURSE—TITLE, INSTRUCTOR, and SUPPLIES. Lists physics courses and their required supplies.

PHYSICAL OPTICS

ELECTRICITY AND MAGNETISM

EXPERIMENTAL TECHNIQUES IN PHYSICS

PHYSICAL SCIENCE

SOCIAL SCIENCE

HISTORY

HISTORY OF EUROPE

THE DEVELOPMENT OF MEDIEVAL EUROPE

POLITICAL SCIENCE

BIBLIOGRAPHY AND RESEARCH METHODS IN POLITICAL SCIENCE

SPEECH

ARGUMENTATION AND PUBLIC DISCUSSION

SPEECH CORRECTION

We are not responsible for typographical errors.

List correct to September 1, 1949.

THE COLLEGE BOOKSTORE

THE COLLEGE BOOKSTORE
SANTA BARBARA COLLEGE
UNIVERSITY OF CALIFORNIA
BOOK LIST

for
FALL TERM

REGULAR SESSION COURSES

WHERE COURSES ARE NOT LISTED, PLEASE SEE YOUR INSTRUCTOR. PLEASE READ THE FOLLOWING RULES CAREFULLY. THE BOOKSTORE MUST ADHERE TO THEM WITH NO EXCEPTIONS.

The College Bookstore will be open during the registration period, beginning Wednesday, September 14th, from 8:00 a. m. to 5:00 p. m. and from 6:30 p. m. to 9:00 p. m., continuing on this schedule until the rush period is ended. Regular hours will be in effect after that time. These hours are 7:45 a. m. to 4:15 p. m., Mondays through Fridays. The Bookstore does not close during the lunch hour.

DO NOT MARK BOOKS AND/OR SUPPLIES UNTIL YOU ARE ABSOLUTELY SURE YOU WILL STAY IN THE CLASS FOR WHICH THEY ARE PURCHASED. We cannot return marked items to our publishers and jobbers and, therefore, must refuse the return of them.

As in the past, we guarantee a 100% refund of the purchase price of all books provided you present a receipt and the book is returned in perfect, salable condition as determined by the College Bookstore on or before 12:00 o'clock noon, Thursday, September 29th.

VETERAN STUDENTS NOTE: All of the rules and regulations made by the Veterans Administration and the Office of the Coordinator of Veterans Affairs must be complied with. All items listed for a course are shown in the list for your convenience but expendable items (pencils, etc.) are not chargeable to that course and must be counted as a part of the "general supply" allowance for the term. DO NOT MARK YOUR BOOKS AND SUPPLIES. Veterans who drop courses must return items involved in the dropping of a course or courses by October 14th. Failure to do so will result in your paying cash for the items.

Table with columns: COURSE - AUTHOR - TEXT, ART, INSTRUCTOR. Lists art courses like 'Perspective Made Easy' and 'Art Through the Ages'.

BIOLOGICAL SCIENCE

BIOLOGY

Table with columns: COURSE - AUTHOR - TEXT, BIOLOGY, INSTRUCTOR. Lists biology courses like 'Biology, Its Human Implications'.

BOTANY

Table with columns: COURSE - AUTHOR - TEXT, BOTANY, INSTRUCTOR. Lists botany courses like 'Botany, Its Human Implications'.

ZOOLOGY

Table with columns: COURSE - AUTHOR - TEXT, ZOOLOGY, INSTRUCTOR. Lists zoology courses like 'General Zoology'.

EDUCATION-PSYCHOLOGY

EDUCATION

Table with columns: COURSE - AUTHOR - TEXT, EDUCATION, INSTRUCTOR. Lists education courses like 'American Public Education'.

Table with columns: COURSE - AUTHOR - TEXT, PSYCHOLOGY, INSTRUCTOR. Lists psychology courses like 'Psychology and Life'.

ENGLISH

Table with columns: COURSE - AUTHOR - TEXT, ENGLISH, INSTRUCTOR. Lists English courses like 'Effective Written English'.

FOREIGN LANGUAGES

FRENCH

Table with columns: COURSE - AUTHOR - TEXT, FRENCH, INSTRUCTOR. Lists French courses like 'Elementary French Grammar'.

GERMAN

Table with columns: COURSE - AUTHOR - TEXT, GERMAN, INSTRUCTOR. Lists German courses like 'Beginning German'.

SPANISH

Table with columns: COURSE - AUTHOR - TEXT, SPANISH, INSTRUCTOR. Lists Spanish courses like 'Spoken and Written Spanish'.

HOME ECONOMICS

Table with columns: COURSE - AUTHOR - TEXT, HOME ECONOMICS, INSTRUCTOR. Lists home economics courses like 'Housekeeping Handbook'.

INDUSTRIAL ARTS

HORTICULTURE

Table with columns: COURSE - AUTHOR - TEXT, HORTICULTURE, INSTRUCTOR. Lists horticulture courses like 'Propagation of Plants'.

Table with columns: COURSE - AUTHOR - TEXT, GRAPHIC ARTS, INSTRUCTOR. Lists graphic arts courses like 'Perspective Made Easy'.

INDUSTRIAL ARTS

Table with columns: COURSE - AUTHOR - TEXT, INDUSTRIAL ARTS, INSTRUCTOR. Lists industrial arts courses like 'Machine Tool Operation'.

EDUCATION

Table with columns: COURSE - AUTHOR - TEXT, EDUCATION, INSTRUCTOR. Lists education courses like 'Principles of Guidance'.

MATHEMATICS

Table with columns: COURSE - AUTHOR - TEXT, MATHEMATICS, INSTRUCTOR. Lists mathematics courses like 'Plane and Spherical Trigonometry'.

MUSIC

Table with columns: COURSE - AUTHOR - TEXT, MUSIC, INSTRUCTOR. Lists music courses like 'A Gateway to Music'.

PHYSICAL EDUCATION

MEN

Table with columns: COURSE - AUTHOR - TEXT, PHYSICAL EDUCATION, INSTRUCTOR. Lists physical education courses like 'Purchase, Care and Repair of Athletic Equipment'.

Registration Week Activities Begin Big Integrated Program

This year promises to be one of the most active years socially that our hilltop campus has seen. A closely-integrated program of activities has been scheduled for Registration Week, to make new and old students alike feel at home. Among those events that students will not want to miss are the following:

THURSDAY, SEPT. 15:

- 2:30-3:00—Big-Little Sister Meeting—Pine Hall 100.
- 3:00-3:30—Freshman Class Meeting—Auditorium.
- 3:30-4:15—"Meet the Wheels" Assembly—Aud.
- 5:00-8:00—AMS-AWS Picnic—La Playa Field.
- 8:00-9:30—Gridiron Prevue—La Playa Field.
- 9:30—Stag Howdy Dance—Mesa Campus above La Playa Field.

FRIDAY, SEPT. 16:

- 3:00—Required Assembly for all women students in Auditorium.
- 9:00—Howdy Dance.

MONDAY, SEPT. 19:

- 7:00-9:30—AWS Party for Transfer Women—Quad.

WEDNESDAY, SEPT. 21:

- 4:00-7:30—WAA Hart and Hound Party.

FRIDAY, SEPT. 23:

- 4:00—Football Rally
Whittier Game, and After-Game Dance.

SUNDAY, SEPT. 25:

- 2:00-5:00 Phrateres' Tea for New Women.

FRIDAY, SEPT. 30:

- 1:00—President Sproul's Assembly—Quad.
- 8:00-12:00—President's Dance and Reception for New Students.

FUTURE EVENTS

FRIDAY, OCT. 15:

- AWS-AMS Initiation of Freshmen—All-College Picnic.

FRI., SAT., SUN., OCT. 28, 29, 30:

- All-Cal Football Festival at UCLA, with UCSBC playing the Cal Aggies in the L. A. Coliseum Saturday at 11 o'clock, and UCLA vs. Berkeley in the afternoon—and all the rallies, dances, and fun that go with it!

FRIDAY, NOV. 4-6:

- HOME-COMING WEEK-END!!! Revue, Parade, Game, Dance.

A Capella Choir to Limit Membership

Membership in the Acappella choir for this semester will be limited to those selected for the stage chorus and principals of the Gershwin opera, "Of Thee I Sing," according to an announcement by Dr. Van A. Christy.

The opera is to be given early in December through the combined efforts of the departments of Speech, Music, and Physical Education. There are sixteen solo roles for men in the work, as there will be understudies for each part, 32 men will be needed for solo work.

The music presents few difficulties and is of an easy range, and in many instances, hardly more than the ability to carry a tune is required. The stage chorus will number about thirty, aside from the soloists.

Those who wish to try out for solo or chorus parts should apply immediately, as it will be necessary to select most of the cast this week.

Rehearsals will be on Monday, Wednesday, and Friday noon, in Music Hall 100, beginning September 19, 1949.

BIG-LITTLE SISTER MEETING SCHEDULED

There will be a meeting for all big and little sisters Thursday, September 15, from 2:30 to 3:00 p. m. in PH 100. Nancy Chmilowski, chairman of the program, will explain its purpose more fully. The meeting will give big and little sisters a chance to become better acquainted.

You
are invited
to open
a
charge accounts*

at



*90-DAY CHARGE ACCOUNTS
ARE NOW AVAILABLE TO
QUALIFIED STUDENT
APPLICANTS

First again with U.C. men! and women!

File Forms and Constitution With ACB, Kistler Asks

October 15 is the deadline for all organizations to turn in their organization forms and constitutions to the Activities Control Board, Jean Kistler, chairman of the board, announced today.

Her request was directed toward all presidents and chairmen of active organizations on campus.

"Although forms have been sent to the home addresses of many of the chairmen with instructions and suggestions concerning the forms," she said, "those who did not receive this material should make arrangements in the office of the Student Body President or in the office of the Dean of Women."

Jean emphasized the fact that in order for an organization to have all the benefits of an active group, the necessary forms and constitution would have to be on file by October 15.

All-University Picnic Tomorrow at La Playa

(Continued from page 1)
gym lawn. Faculty and members of the school staff will be contacted personally by members of Spurs who will sell them their picnic tickets.

Tickets will also be sold at the gates the night of the picnic.

AFTER CLASS
or
ANYTIME
IT'S



109 E. ANAPAMU
Across from Court House

**SORORITY HOUSES!
FRATERNITY HOUSES!
HOUSE MANAGERS!
HOUSE MOTHERS!
BOARDING HOUSES**

JORDANOS'

Enjoy the many advantages offered by JORDANOS' WHOLESALE DEPARTMENTS . . . shop the same as the leading Hotels and Restaurants . . . order by phone . . . with one phone call . . . one delivery . . . Save money and time . . . and **Get the Best!**

- Wholesale MEAT Department
- Wholesale PRODUCE Department
- GROCERIES at Wholesale

BUY ALL OF YOUR

FOOD

at WHOLESALE PRICES

One Phone Call!

One delivery!

**BUY THE SAME
AS LEADING
HOTELS and
RESTAURANTS**

**SAVE MONEY
SAVE GAS
SAVE TIME
SAVE ENERGY**
(Place one order)

**Mail the Coupon
Or Phone 3961
for Complete
Information**

Send in the coupon or phone 3961 for full information . . . our representative will call and give you fullest information . . . you will be delighted with Jordanos wholesale Food-Buying Service!

JORDANOS'
35 W. Canon Perdido — Santa Barbara
PHONE 3961

JORDANO'S, Inc., 35 W. Canon Perdido

Yes, I am interested in getting information on your Wholesale-Food Delivery service. You may send your representative to see us at once.

NAME.....

ADDRESS.....

PHONE NO..... DATE AND TIME TO SEE.....

ADDITIONAL INFORMATION.....

SIGNATURE.....

Gridiron Hopefuls Condition At La Playa for Opening Game

Gaucha gridiron hopefuls preparing for the season opener with Whittier College on September 23 have been undergoing intensive conditioning drills and scrimmages at La Playa Stadium under the hand of new Head Coach Roy W. Engle.

Engle comes to Gaucholand with a background of experience as player and coach, replacing Stan Williamson, who is taking a year's sabbatical leave for graduate study.

Somewhat brighter prospects are in store for the coming season since the opponents scheduled are colleges with strength more comparable to that of Santa Barbara College. The University of Oregon and College of the Pacific have both been dropped from the slate, while Pepperdine College has been added as a new member of the CCAA Conference.

Sixteen returning lettermen form the backbone of the '49 squad, which was considerably weakened by the graduation of 13 members of the '48 team. They will be replaced by members of last year's frosh team and junior college transfers chosen from the fifty hopefuls who turned out for fall practice.

The top prospect in the Gaucha backfield is Royal Cathcart, 180-pound halfback, who hit his stride during the final games last season and gives promise of being all-Conference material this year.

Three regular quarterbacks are returning—Glenn Mullaney, Erick Gorrie, and Knute Clark—along with Glenn Vanderlinde, up from the frosh team. Completing the slate of returning lettermen are halfbacks Tom Kelley and Tom White, and Fullback Russ Bertell.

Ten linemen are returning this year, including centers Dick Schafe and Warren Vinton, tackles Bob Wooldridge and Wayne Templeton, guards George Harnden and Bill Brozowski, and ends Bernie Paulson, LeRoy Criss, Fred Lloyd, and Bob Baker.

Former Trojan Star Gaucho Squad Coach

The 1949 football season sees a new head coach guiding the Gauchos with Roy W. Engle coming to the helm while Stan Williamson takes a year's sabbatical leave for graduate study.

Although this is his first collegiate head coaching job, Roy brings to the campus a wealth of experience, both as player and coach. He just concluded three years as backfield coach with Jeff Cravath at USC, helping to bring one team to the Rose Bowl.

He is a graduate of USC and played under Howard Jones, alternating as a fullback and right halfback. As a junior and senior he was a member of the Rose Bowl teams which successively defeated Duke and Tennessee. In addition to three Trojan letters in football, he earned three letters as catcher on the baseball squad. He was co-captain of the 1940 Trojan nine. As a result of his athletic record at USC he was awarded the Trojan Diamond Medal in 1940 as the outstanding athlete in the graduating class.

Engle first gained athletic prominence at Hoover high school, San Diego, as a three-year football letterman and baseball star, graduating in 1936. Following a season of professional baseball with Tulsa and graduate study at USC, where he coached frosh football, he returned to San Diego's Hoover high as football and baseball mentor. Engle's diamond squad won the Pomona Tournament gaining the CIF, Southern Division, championship in 1942.



Roy W. Engle

Gaucha Marching Band Builds to Outblow Bruins and Bears

The call is out to all students interested in joining the 1949 Gaucha Marching Band. Mr. Clayton Wilson, band director, explained the goal of the band this semester as building toward a crack unit which will participate in the All-Cal Week-end, to be held at U. C. L. A. this year. This second annual festival will again bring together the bands of the four major campuses of the University and the Gauchos hope to repeat the fine showing they made last year at Berkeley. In a letter to the band, President Sproul complimented the band on, "The good music and skilled marching of the Gaucha Band."

In addition to the U. C. L. A. trip, the band will stage the half-time stunts for the four home games of this year's football schedule, working in conjunction with the Rally Committee and other campus organizations.

New band awards, the Cal circle C with a superimposed lyre, will be given to all members for two semesters of marching band. Mr. Wilson pointed out that the one unit credit given for band will fulfill part of the state requirements for Applied Arts.

All persons interested in joining the band should contact Mr. Wilson in the Music Department office, as early as possible.

Gaucha Team Schedules Nine; Meets Poets to Start Season

Santa Barbara College officials announced a revised nine-game 1949 football schedule which includes four non-conference events in addition to the regular CCAA schedule. A shift in the schedule replaces College of the Pacific with Pepperdine College, as the new member of the CCAA. This will be the first football meeting between Santa Barbara and Pepperdine.

Kelliher Returns To Backfield Post

The Gaucha backfield is under the surveillance of Assistant Coach M. S. "Doc" Kelliher, for the third season. Kelliher has had many years coaching experience and was himself a star backfield player.

Kelliher is an "old-timer" here, graduating from old Santa Barbara State in 1934 after earning two letters as halfback and fullback in football and one in track as a sprinter. Born in Lompoc, Kelliher has called Santa Barbara home since his family moved here in 1926.

In 1936 Kelliher coached freshman football at Santa Barbara State for one year. Following that he coached at Oxnard high school for five years until the war came along. He joined the Navy's physical fitness program and during a tour of duty at St. Mary's he worked with his former boss, Stan Williamson. After the war he was Assistant Director of Recreation for Santa Barbara's Recreation Department.

On the coaching field Kelliher is a fiery bundle of energy and he keeps the squad on their toes. Doc is married, has two children, and whenever possible he keeps up his hobby of wood carving and model building—but now, spare time goes into a home he is building himself which he will complete this fall.

The season will include the first appearance of the Gauchos in the Los Angeles Coliseum when they meet Cal Aggies in a preliminary game before the UC-UCLA game as part of a four-campus day for the state university.

The setting of an Armistice Day afternoon game with Cal Poly as a tradition will be furthered as they meet for the second year on that date. This year the Gauchos will travel to the Cal Poly gridiron for their first football appearance in San Luis Obispo.

Traditional series games are to be played with Occidental, Whittier, and Pomona outside the league, but the longest series is with the CCAA competitors, San Diego State, with 18 games on the books.

The schedule for the 1949 season is as follows:

- Sept. 23—Whittier College, La Playa Stadium, 8:15 p. m.
- Sept. 30—Pomona College, Pomona, 8 p. m.
- Oct. 8—Occidental College, La Playa Stadium, 8:15 p. m.
- Oct. 14—Fresno State College, La Playa Stadium, 8:15 p. m.
- Oct. 21—San Jose State College, Spartan Stadium, San Jose, 8 p. m.
- Oct. 29—Cal Aggies, Los Angeles Coliseum, 11 a. m.
- Nov. 5—Geo. Pepperdine College (H. C.), La Playa Stadium, 8:15 p. m.
- Nov. 11—Cal Poly, San Luis Obispo, afternoon.
- Nov. 24—San Diego State, San Diego Aztec Bowl, afternoon.

WELCOME BACK

Listed at the right are a few of the many items we wanted to call your attention to at the very opening of the term. Every one of them is a real bargain.

Just to remind you:

Every pen that is purchased through us is monogrammed free of charge.

Every pen we sell, regardless of its price, is guaranteed for 30 days from date of purchase.

We've got the lowest prices in town. We know you'll agree if you've had to buy many items off the campus this past month or two.

We still furnish free ink, free blotters, free use of 24 pencil sharpeners all over the campus, the use of our paper cutter, paper punch and staplers, and a lot of free advice.

Drop in and get acquainted. We know you'll enjoy our hospitality and WE JUST LOVE TO SELL STUFF!!!

Just

Remember

to

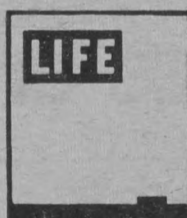
Patronize

Special College Rates



you save \$5.40 under the 20c-a-copy newsstand price — \$1.50 under the regular 1-year subscription price

when you subscribe through us at the Special College Rate of only \$4.75



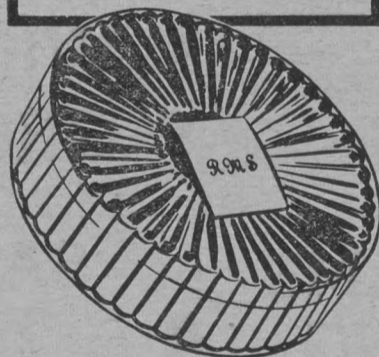
you save \$5.65 under the 20c-a-copy newsstand price — \$1.25 under the regular 1-year subscription price

when you subscribe through us at the Special College Rate of only \$4.75



VETERANS: Make your dollars stretch further—by taking advantage now of these money-saving, special rates...

BOOK MATCHES distinctively PERSONALIZED with your NAME OR MONOGRAM



50 books of matches, personalized with Genuine Kingsley monogramming, and packaged in attractive plastic gift box. Your choice of colors \$1.35



Priced From \$10.00 (No Federal Tax)



\$3.00 Per Box



85c Each



And All Other Popular Brands \$1.48 Per Carton

THE COLLEGE BOOKSTORE

"It's to your advantage"